



[Home](#) » [HARVIA](#) » **HARVIA CX1704XW WiFi Control Unit Instruction Manual** 

Contents [[hide](#)]

- [1 HARVIA CX1704XW WiFi Control Unit](#)
- [2 Product Information](#)
- [3 Specifications](#)
- [4 Product Usage Instructions](#)
- [5 System components](#)
- [6 Installing the Temperature Sensors](#)
- [7 DE TECHNISCHE DATEN](#)
- [8 FAQs](#)
- [9 Documents / Resources](#)
 - [9.1 References](#)



HARVIA CX1704XW WiFi Control Unit



Product Information

Specifications

- Product Name: Harvia Xenio WiFi CX1704XW
- Control Unit Type: CX001WIFI
- Manufacturer: Harvia
- Date: 26072021 / Y05-0886

Product Usage Instructions

Warnings and Notes

This user manual is intended for the owner or the person in charge of the product, as well as for the electrician in charge of the electrical installation of the product. Please read all instructions carefully before using the product.

Installation and Maintenance

The electrical device must only be connected to the electrical network by an authorized electrician. Maintenance requiring special skills should be done by a trained professional. Always disconnect the device from the electricity network before any maintenance work.

Instructions for Use and Bathing

Before switching on the heater, ensure there are no objects on or near the heater. Beware of hot surfaces that can burn the skin. Do not cover the heater.

Instructions for Installation

System Components: Control panel, data cable, power unit, temperature sensor, humidity sensor, remote switch, safety switch.

Installing the Power Unit: Follow steps 30-31 in the manual.

Electrical Connections: Steps 32-43 provide detailed information on electrical connections.

Installing the Temperature Sensors: Refer to steps 44-51 for guidance on installing temperature sensors.

Resetting the Overheat Protector

Steps 52-54 explain how to reset the overheat protector.

Spare Parts

A list of available spare parts is provided in steps 54-55 of the manual.

Technical Data

Detailed technical specifications can be found in steps 56-58 of the manual.

Guarantee

Information regarding warranty and guarantee terms is outlined in steps 59-61.

WARNINGS AND NOTES

This user manual is intended for the owner or the person in charge of the product, as

well as for the electrician in charge of the electrical installation of the product. After completing the installation, the person in charge of the installation should give these instructions to the owner of the product or to the person in charge of its operation. Please read more instructions for installation, use and recycling from www.harvia.com. (Original user manual from manufacturer.



READ THE WARNINGS AND MANUAL CAREFULLY BEFORE USING THE PRODUCT!

The sauna heater is designed for the heating of a sauna room to bathing temperature. It is not to be used for any other purpose! The control unit is meant for controlling the functions of sauna and a sauna heater. It is not to be used for any other purpose! This device is allowed to use by 8 years old or older children and persons with reduced physical, sensory or mental capabilities, or persons with lack of experience and knowledge, if they are supervised or they have been instructed to use the device safely and if they are aware of the dangers involved. Children should not play with the device. Children should not clean or do operations to the device without supervision.

INSTALLATION AND MAINTENANCE

The electrical device may only be connected to the electrical network in accordance with the current regulations by an authorised, professional electrician. After completing the installation, the person in charge of the installation should give these instructions to the owner of the sauna or to the person in charge of its operation.

- All maintenance that requires special skills must be performed by a trained professional.
- Always disconnect the device from the electricity network before carrying out any maintenance work!
- Check the device for visible damage before installing and using the device. Do not use a damaged device.
- It is absolutely necessary to install the device according to values stated in the instructions of installation and use. Neglecting them causes a risk of fire.
- If suitable accessories are installed in the device, follow the accessory-specific operating and installation instructions!

- Clean the product by using a lightly moistened cloth. Use only mild cleaning agents, never solvents or corrosive chemicals.
- This product should not be disposed of with general household waste. When recycling your product, take it to your local collection facility or contact the place of purchase.
- The device must be installed in such a way that the warning texts are easy to read after installation.
- The device must not be installed in a wall recess, unless otherwise stated in the instructions.
- Do not place the supply air vent so that the air flow cools the temperature sensor (see temperature sensor installation instructions!)
- If the supply cord is damaged, it must be replaced by the manufacturers' service person or a similarly qualified person in order to avoid a hazard.
- Use of a PVC-insulated cable as a connection cable for the heater is prohibited due to its thermal fragility.
- Do not connect power supply to electric heater via a residual current device.
- If device is connected to water supply, there must be a floor drain on the floor of the sauna room and/or washroom in case of hose breaks or leaks.
- If device is used in public saunas without a timer, the indicator light, which tells if the device is on, must be placed in the room where the device is controlled.

INSTRUCTIONS FOR USE AND BATHING

Always check that there are no objects on the heater or near the heater before switching it on.

Beware of hot heater. The stones and metal parts of the heater may burn the skin.

Do not cover!

- Sea air and a humid climate may corrode the metal surfaces of the device.
- Do not hang clothes to dry in the sauna, as this may cause a risk of fire. Excessive moisture content may also cause damage to the electrical equipment.
- Do not press the overheating protection button before the cause of the fault has been found. Only persons authorised to carry out electrical installations can reset the overheat protector, unless otherwise stated in the instructions manual.
- Always check that the heater has switched off and stopped heating after the on-time

period has elapsed.

- In public saunas, where the heater is used without a timer or continuously for longer than the timer of the heater or the control unit allows with the factory settings, the device must be constantly supervised.
- The sauna room and surroundings of the heater must always be checked before the heater is switched on again or it is switched on with the remote-control system.
- The sauna room and surroundings of the heater must always be checked before the device is brought into standby mode required by remote control or pre-timed operation.
- According to the product standard IEC/EN 60335 -2-53 regulating electrical sauna heaters, the control unit can be used to remotely control the heater once the heater or sauna room door is equipped with a secure switch (safety or door switch).

INSTRUCTIONS FOR INSTALLATION

System components ▶ 28-29 | Installing the Power Unit ▶ 30-31 | Electrical Connections ▶ 32-43 |

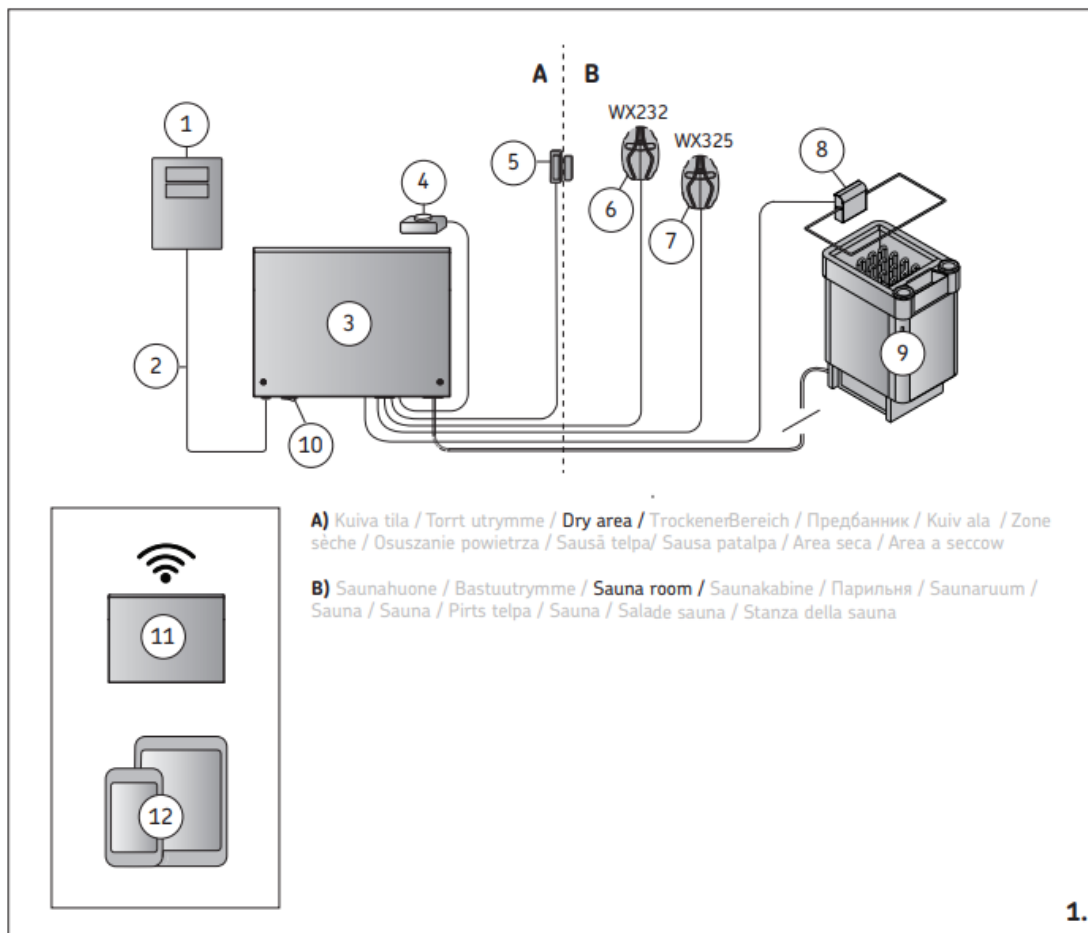
Installing the Temperature Sensors ▶ 44-51 | Resetting the Overheat Protector ▶ 52-54

SPARE PARTS ▶ 54-55

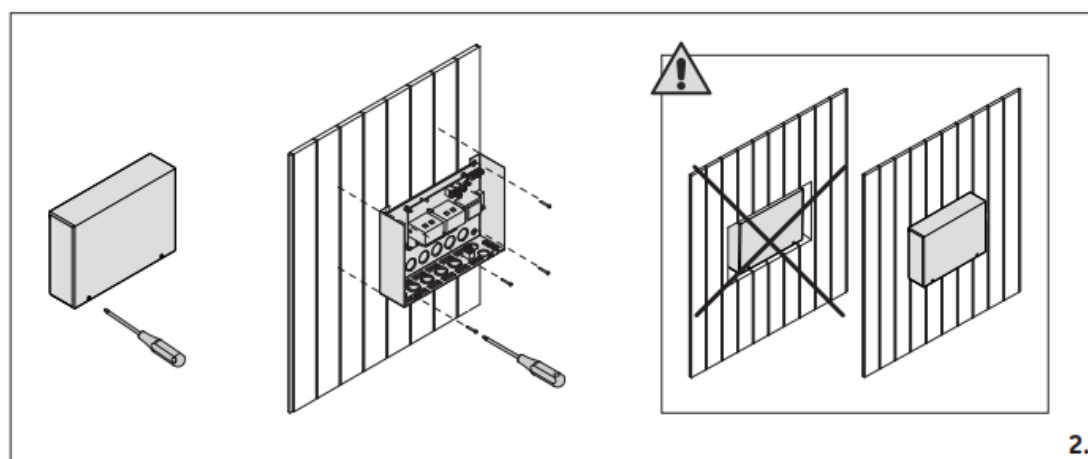
TECHNICAL DATA ▶ 56-58

GUARANTEE ▶ 59-61

System components



1. Control panel 5. Door switch* 9. Heater
2. Data cable 6. Temperature sensor 10. Main switch
3. Power unit 7. Humidity sensor 11. WLAN router
4. Remote switch* 8. Safety switch * 12. Mobile device + MyHarvia *Optional accessory

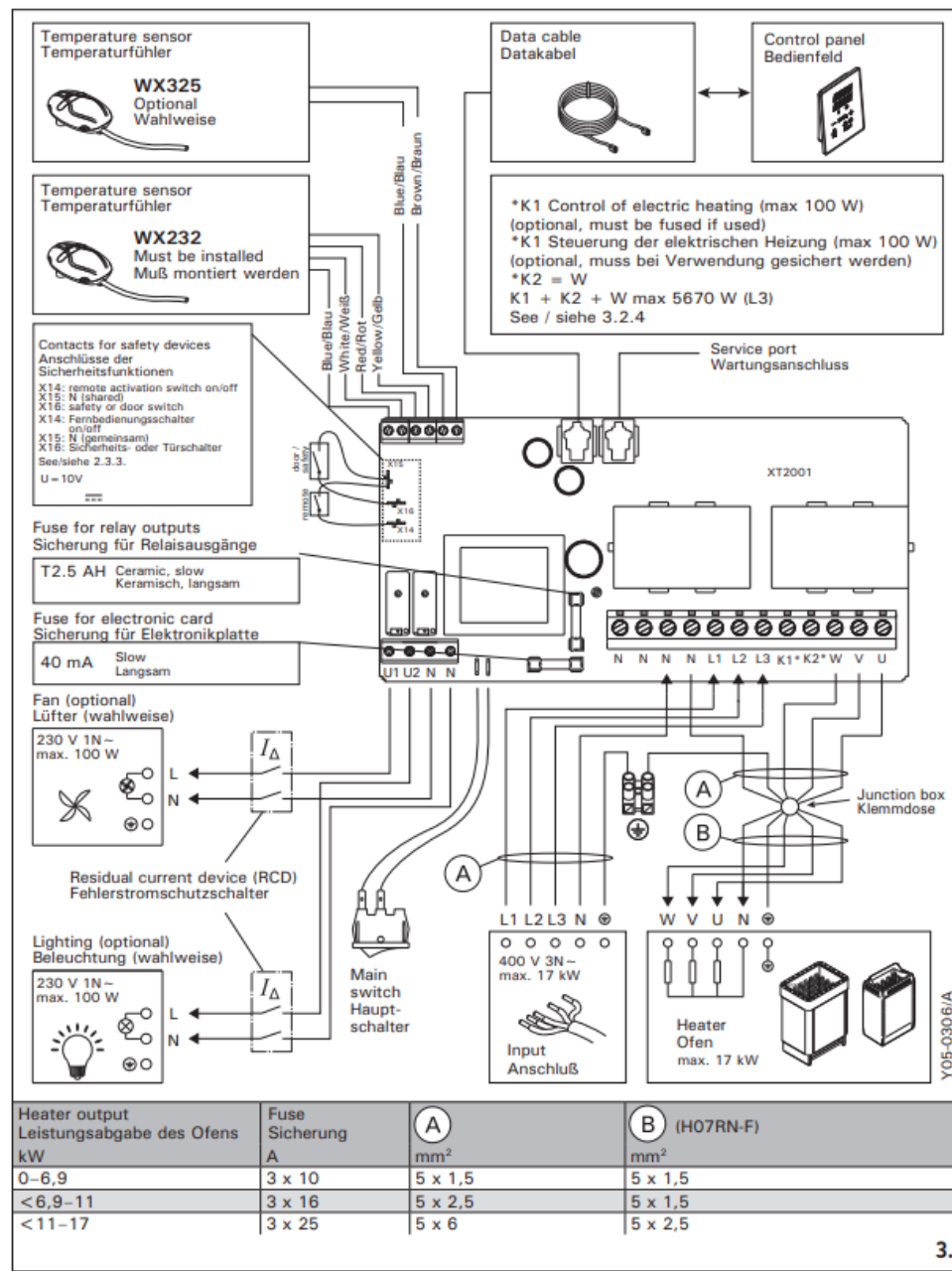


Installing the Power Unit

See WARNINGS AND NOTES!

See TECHNICAL DATA!

Install the power unit to a wall outside the sauna room, in a dry place with an ambient temperature of $>0^{\circ}\text{C}$. Note! Do not embed the power unit into the wall, since this may cause excessive heating of the internal components of the unit and lead to damage.



Electrical Connections

See WARNINGS AND NOTES! See TECHNICAL DATA!

See figure Electrical Connections.

See heater Installation Instructions.

Power Unit Fuse Faults

Replace a blown fuse by a new one with the same value. The placement of the fuses in the power unit is shown in figure 3.

- If the fuse for the electronic card has blown, there is likely a fault in the power unit. Service is required.

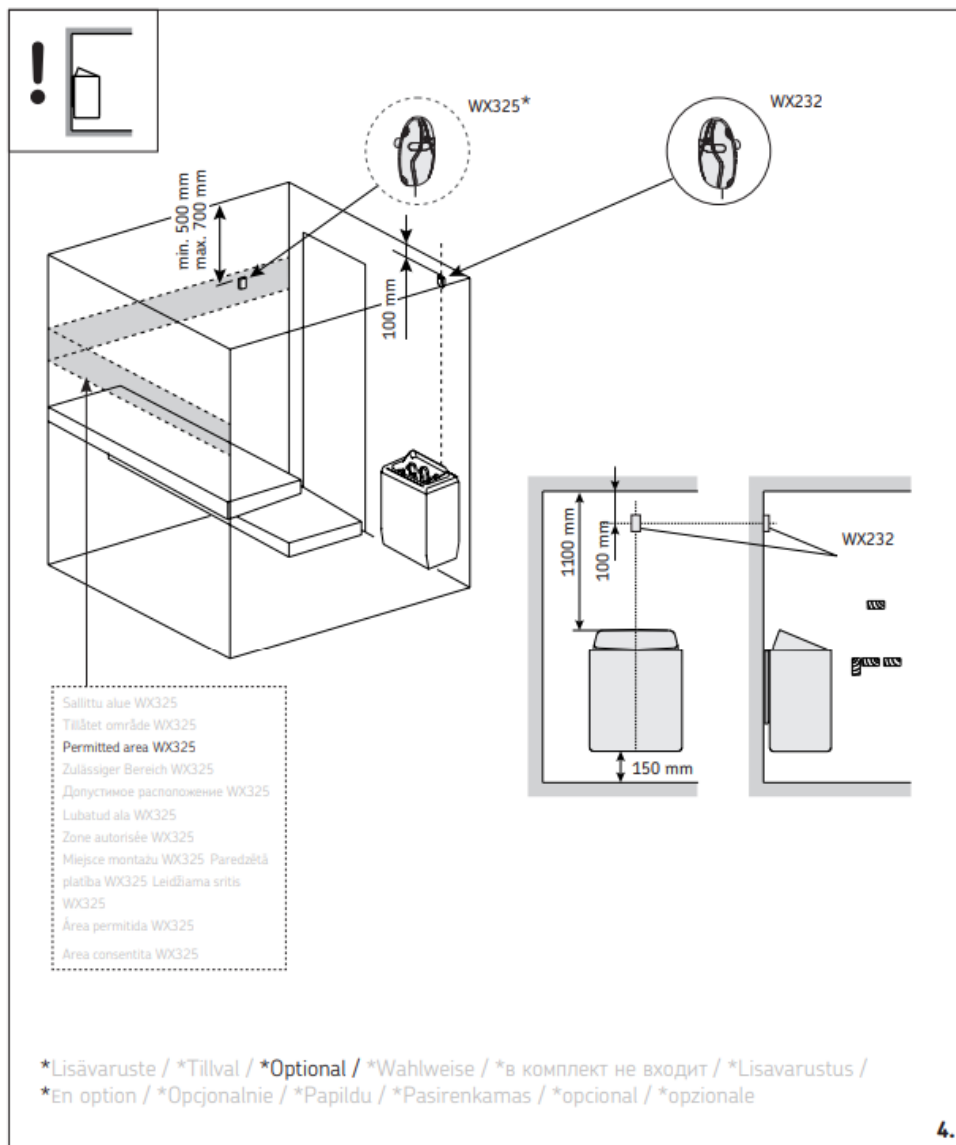
If the fuse in the line U1, U2 has blown, there is a problem with lighting or fan. Check the wiring and functioning of lighting and fan.

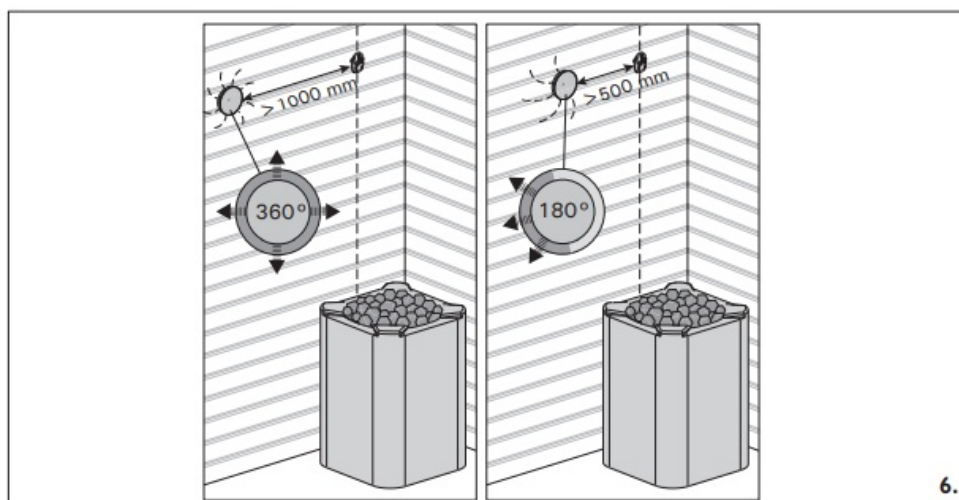
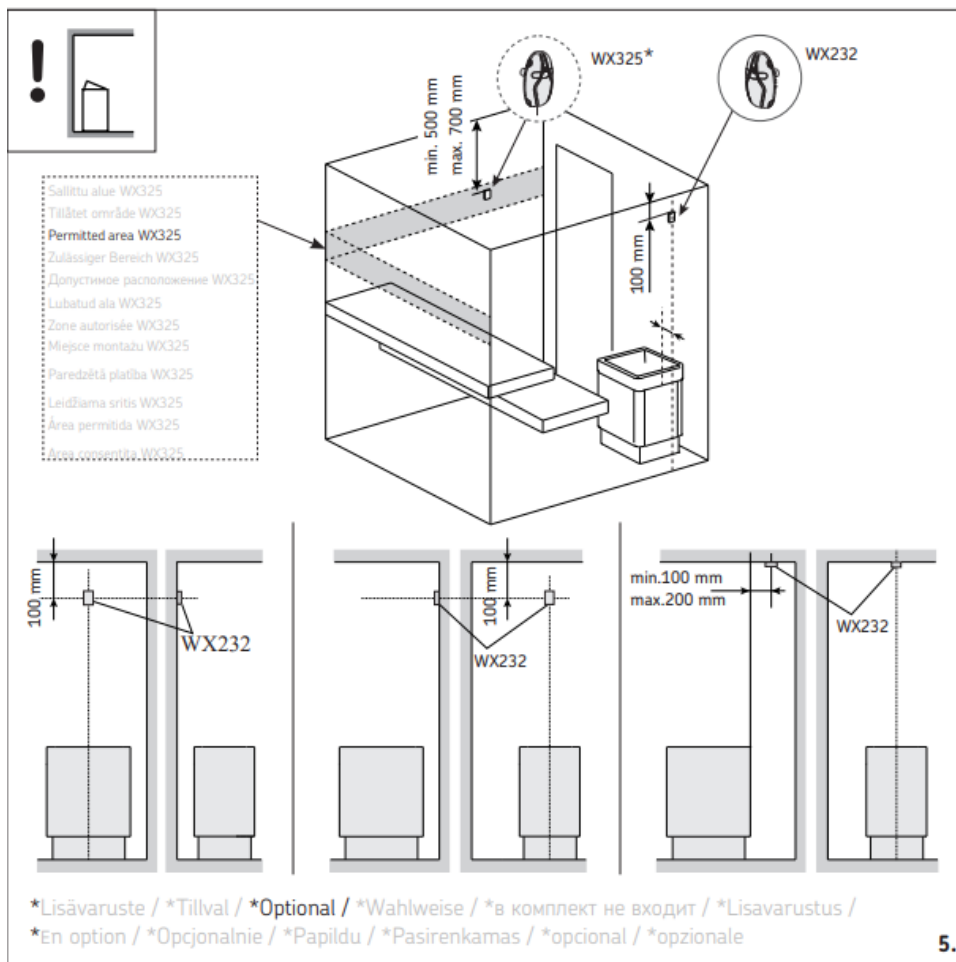
Power extension unit LTY17 (optional)

- The maximum load of control unit can be increased by 17 kW by using power extension unit LTY17. It is controlled using terminals K1 and K2. The power extension unit includes detailed instructions of installation.

Terminals for controlling electrical heating

Terminals K1 and K2 of the power unit can also be used to control e.g. electrical heating. When the heater is turned on from the control unit, voltage is generated in terminal K1. When the heating elements are engaged, voltage is generated in terminal K2. These signals can be used to guide the heating to be turned off.





Installing the Temperature Sensors

See WARNINGS AND NOTES! See TECHNICAL DATA!

Note! Do not install the temperature sensor closer than 1000 mm to an omnidirectional air vent or closer than 500 mm to an air vent directed away from the sensor. See figure 6. The air flow near an air vent cools down the sensor, which gives inaccurate temperature readings to the control unit. As a result, the heater might overheat.

Installing the Temperature Sensor WX232

Instructions below are general guidelines. Always check the correct location for the temperature sensor from the heater's instructions for installation and use.

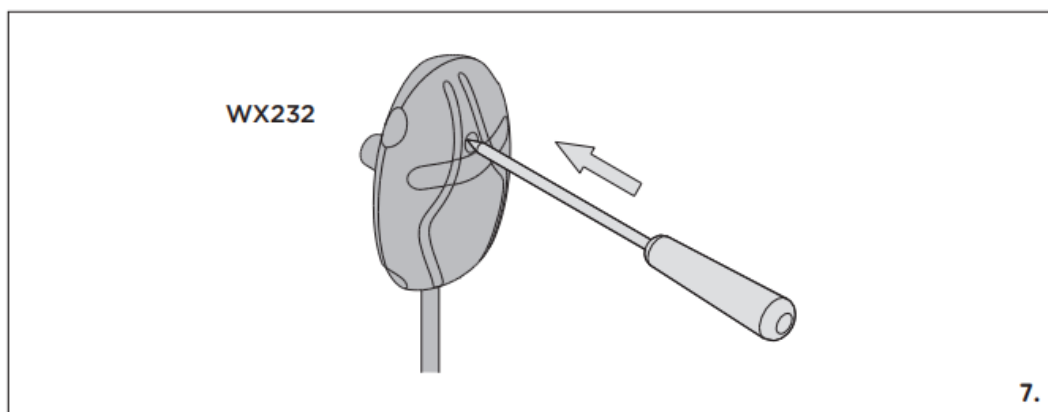
Wall-mounted heaters (see figure 4)

Fasten the temperature sensor on the wall above the heater, along the vertical centre line running parallel to the sides of the heater, at a distance of 100 mm from the ceiling.

Floor-mounted heaters (see figure 5)

- Option 1: Fasten the temperature sensor on the wall above the heater, along the vertical centre line running parallel to the sides of the heater, at a distance of 100 mm from the ceiling.
- Option 2: Fasten the temperature sensor to the ceiling above the heater, at a distance of 100–200 mm from the vertical centre line of the heater's side.

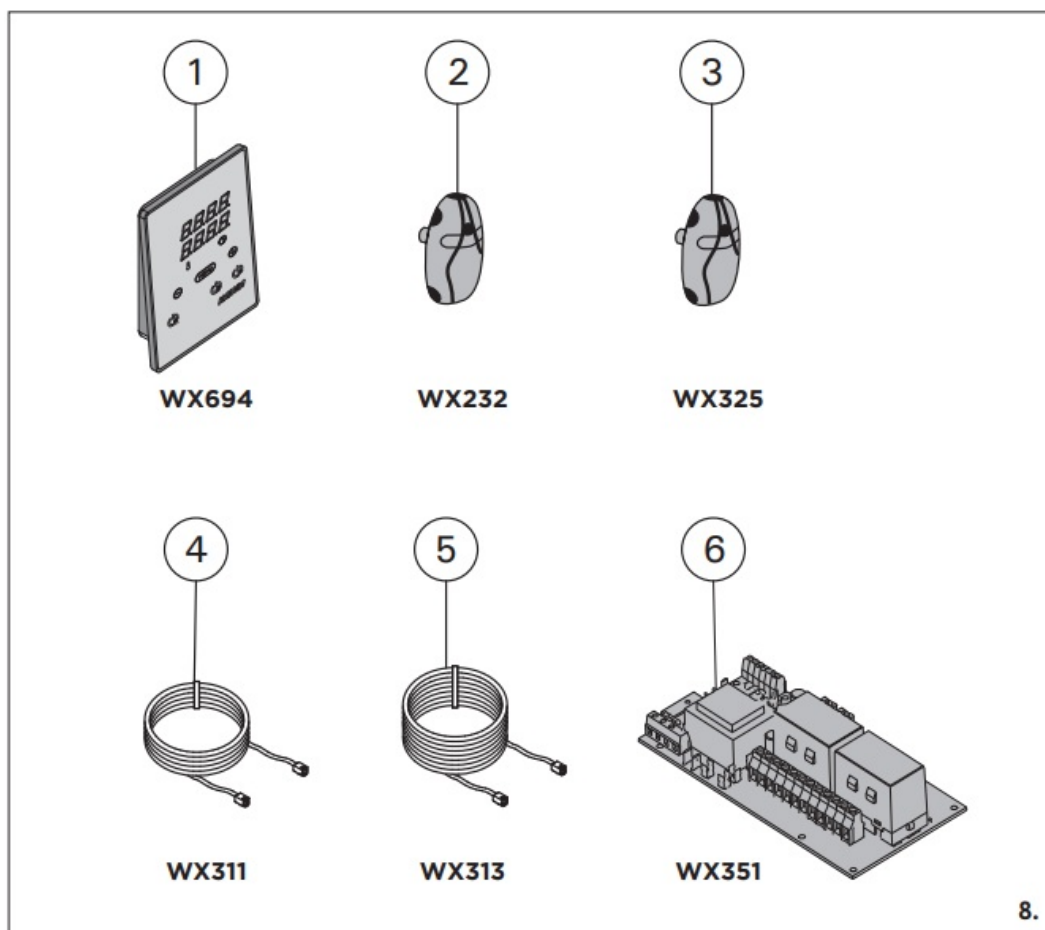
Installing the Temperature Sensor WX325 (optional) Fasten the temperature sensor on the wall as far from the heater as possible and at a distance of 500–700 mm from the ceiling. See figures 4 och 5.



Resetting the Overheat Protector

The sensor box (WX232) contains a temperature sensor and an overheat protector. If the temperature in the sensor's environment rises too high, the overheat protector cuts off the heater power. Resetting the overheat protector is shown in figure 7.

Note! The reason for the going off must be determined before the button is pressed.



Spare parts

Control panel

1. Temperature sensor
2. Temperature sensor *
3. Data cable 5 m
4. Data cable extension 10 m
5. Circuit board

DE TECHNISCHE DATEN

	Model	CX170 / CX170X W
	Max. power kW	17
	Operating voltages	400 V / 415 V 3N ~

Technical data	Frequency Hz z		50 / 60
	Fuse	(400 V / 415 V 3N~) A	max. 3 x 25
	Supply cord	(400 V / 415 V 3N~) mm ²	min. 5 x 2,5
	Connection cable type /		H07RN-F or equivalent H07RN-F oder gleichwertig
	Protection class		I / IPX3
	Weight kg		1,6
	Storage temperature °C		0-50
Dimensions and safety	Height mm		193
	Width mm		272
	Depth mm		80
	Product min. space requirements mm		300 x 300
Approved accessories	Door sensor for domestic use SAB00103		
	Door sensor for professional use SAB00101		
	Harvia SFE Safety switch		
Spare parts	WX232, WX325, WX311, WX313, WX351, WX694		

GUARANTEE

- The guarantee period for heaters, steam generators and control equipment used in saunas by families is two (2) years.
- The guarantee period for heaters, steam generators and control equipment used in

saunas by building residents is one (1) year.

- The guarantee period for heaters, steam generators and control equipment used in commercial saunas facilities is three (3) months.
- The guarantee does not cover any faults resulting from failure to comply with installation, use or maintenance instructions.
- The guarantee does not cover any faults resulting from the use of stones not recommended by the heater manufacturer.
- We recommend to use only the manufacturer's spare parts.

P.O.Box 12

Teollisuustie 1-7

40951 Muurame

FINLAND

+358 207 464 000

harvia@harvia.fi

www.harvia.fi

OGPH 1157847200818

T: +78123258294 | spb@accountor.ru

FAQS

Q: Can children use this device?

A: This device is allowed to be used by children aged 8 years or older under supervision and with proper instructions on safe usage.

Q: What should be done before carrying out maintenance work?

A: Always disconnect the device from the electricity network before performing any maintenance work to ensure safety.

Documents / Resources



[HARVIA CX1704XW WiFi Control Unit \[pdf\]](#) Instruction Manual
CX1704XW, CX001WIFI, CX1704XW WiFi Control Unit, CX1704XW, WiF
i Control Unit, Control Unit, Unit

References

- [User Manual](#)

📁 HARVIA 🔑 Control Unit, CX001WIFI, CX1704XW, CX1704XW WiFi Control Unit, HARVIA, Unit, WiFi Control

Leave a comment

Your email address will not be published. Required fields are marked *

Comment *

Name

Email

Website

☐ Save my name, email, and website in this browser for the next time I comment.

Post Comment

Search:

e.g. whirlpool wrf535swhz

Search

[Manuals+](#) | [Upload](#) | [Deep Search](#) | [Privacy Policy](#) | [@manuals.plus](#) | [YouTube](#)

This website is an independent publication and is neither affiliated with nor endorsed by any of the trademark owners. The "Bluetooth®" word mark and logos are registered trademarks owned by Bluetooth SIG, Inc. The "Wi-Fi®" word mark and logos are registered trademarks owned by the Wi-Fi Alliance. Any use of these marks on this website does not imply any affiliation with or endorsement.