



HARVEY HWD-FS Flex Screen Window Screens User Guide

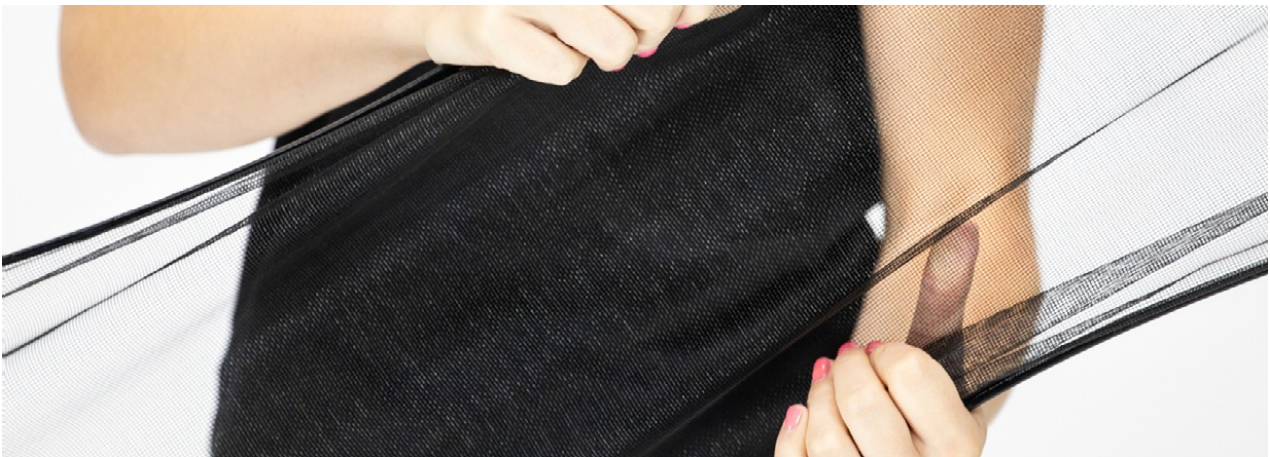
[Home](#) » [HARVEY](#) » HARVEY HWD-FS Flex Screen Window Screens User Guide 




Contents

- [1 HWD-FS Flex Screen Window Screens](#)
- [2 FULL SCREEN INSTALLATION & REMOVAL GUIDE*](#)
- [3 Documents / Resources](#)
 - [3.1 References](#)

HWD-FS Flex Screen Window Screens



	OTHER SCREENS
<ul style="list-style-type: none"> ✔ Nearly indestructible ✔ No color matching necessary ✔ Full view ✔ No hardware ✔ Effortless installation and removal 	<ul style="list-style-type: none"> ✗ Can bend and damage more easily ✗ Need to be color-matched ✗ Can impede the view ✗ Utilize complicated hardware ✗ Frustrating installation and removal

FlexScreen's barely visible frame is almost completely hidden by the screen track, and its innovative, flexible construction makes it effortless to remove or install.

DURABLE

FlexScreen has a core made of phosphate enhanced high carbon oil tempered spring steel, which is the same material as garage door springs or the leaf springs on your car.

The high-performance PVC coating can withstand the elements and is similar to that found on dishwasher racks and outdoor park benches.

SIMPLE & INVISIBLE

Without a bulky screen frame, FlexScreen disappears into the screen box of the window so there's less to get in way of the view.

Plus, since FlexScreen's edges are hidden, there's no need to worry about matching a frame color to the window.

EASY-TO-USE

FlexScreen is the first-ever and ONLY window screen to include ZERO attachment hardware! No more fumbling with plunger pins, knife latches, and other complicated, frustrating attachment methods.

The flexible design snaps into place in seconds, removes just as quickly, and stores in a third of the space of traditional screens.



FlexScreen has a limited lifetime warranty*. If a problem arises during initial purchase, Harvey customer service can be contacted for a replacement, and if something does goes wrong in the future, homeowners can easily submit a claim through FlexScreen's warranty website, using code HRVY349.



THE WORLD'S FIRST AND ONLY FLEXIBLE WINDOW SCREEN

FULL SCREEN INSTALLATION & REMOVAL GUIDE*

*For windows that are wider than they are tall, instructions should be rotated 90 degrees and performed using the horizontal sections of the screens.

INSTALLATION

STEP 1

While keeping the sides compressed, place one top corner of the screen into the screen track.



STEP 2

Keeping both sides compressed, place the opposite top corner into the screen track.



STEP 3

Continue to keep sides compressed, and insert screen into a bottom corner. (Lift slightly if your window has a lip on the sill.) Release this side of the screen.



STEP 4

Place the last corner into the screen track and release completely once all corners are in place.



REMOVAL

STEP 1

Gently press on the center of the screen until you can wrap your hands around the FlexScreen frame. Squeeze both sides inward 4"-6".



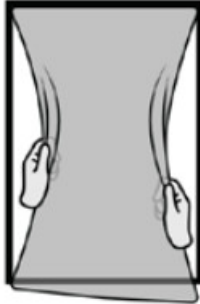
STEP 2

While keeping the sides compressed, lift the screen up and remove one of the bottom corners from the screen track.



STEP 3

Remove the opposite bottom corner from the screen track



STEP 4

With both corners out of the screen track, pull FlexScreen down from the top and remove the screen.



FULL SCREEN INSTALLATION & REMOVAL GUIDE

Begin by opening or tilting the lower sash of your window toward the inside of the house to expose the window screen track. Tilt screen at an angle and feed it completely through the window opening

INSTALLATION

STEP 1

Position the screen with the vinyl adapter at the top. Slide one side completely into the window screen track.

STEP 2

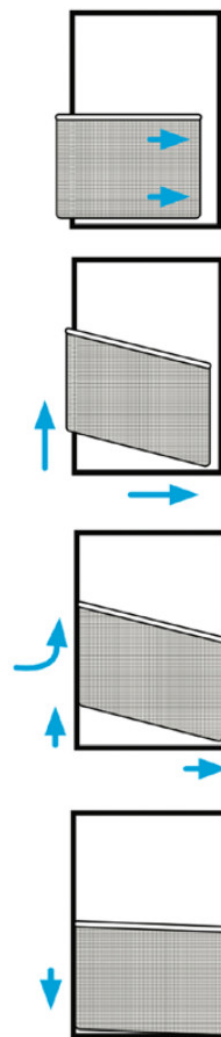
Firmly hold the bottom in place and lift the opposite side of the screen until the frame clears the opening of the screen track.

STEP 3

Pull the screen toward you and seat it into the screen track.

STEP 4

Lower the screen until it rests against the sill and close your window.

**REMOVAL**

STEP 1

Raise the screen until you can grasp the bottom edge of the frame.

STEP 2

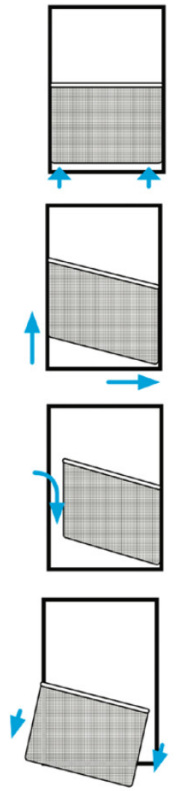
While holding one corner completely stationary, lift the opposite side until the frame of the screen clears the window screen track.

STEP 3

Gently push the raised side toward the outside of the window.

STEP 4

Pivot the screen outward to fully remove it from the window screen track.

**The FlexScreen Story**

<https://www.youtube.com/embed/AjsEb6wYvgU>

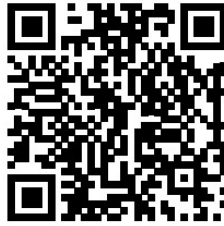
FlexScreen:

The World's first Flexible Window Screen

Click or Scan to Watch



— AS SEEN ON —
SHARK TANK



<https://flexscreen.com/flexscreen-on-shark-tank/>

The screen innovative enough to create a splash on ABC's hit TV show.
Click or Scan to Watch

ASK YOUR CONTRACTOR ABOUT FLEXSCREEN FOR HARVEY WINDOWS

Premium windows deserve a premium screen — that's why we've made FlexScreen the preferred screen option for most of our windows.

For the clearest view, ask your contractor for FlexScreen with VIEWS, Virtually Invisible Screen mesh, and get 25% better airflow and maximum protection against small insects.

File# 22-038 HWD-FS V1



https://cdn.mediaavalet.com/usil/harveybp/OTVRsZ5toUqNAIkyAZv4EQ/q5XcU-GcPEi_hMndTTz2aQ/Widescreen1080p/Full%20FlexScreen%20in%20Harvey%20Double%20Hung%20Window_2.mp4


VIDEO: Remove/Install a HALF
FlexScreen in a Harvey Window
Click or Scan QR Code to Watch



HARVEY
WINDOWS + DOORS

Visit flexscreenwarranty.com for full details.

Documents / Resources

	<p>HARVEY HWD-FS Flex Screen Window Screens [pdf] User Guide HWD-FS Flex Screen Window Screens, HWD-FS, Flex Screen Window Screens, Screen Window Screens, Window Screens, Screens</p>
---	--

References

- [📄 Home - FlexScreen Warranty](#)
- [✂ FlexScreen on Shark Tank with Lori Greiner](#)
- [User Manual](#)