



HARTMANN Pur-Zellin Box Storage Box for Cellulose Swabs Instruction Manual

[Home](#) » [hartmann](#) 

Contents

- [1 Pur-Zellin Box Storage Box for Cellulose Swabs](#)
- [2 Product Information](#)
- [3 Product Usage Instructions](#)
- [4 Application notes](#)
- [5 Special notes](#)
- [6 Product disposal](#)
- [7 Incident reporting](#)
- [8 Documents / Resources](#)
 - [8.1 References](#)



Pur-Zellin Box Storage Box for Cellulose Swabs



Product Information

The Pur-Zellin Box is a reusable, non-sterile dispenser box that comes with a flap, a lid with a blue shield, a roll holder spindle, and instructions for use. The product is designed to minimize contamination on sterile Pur-Zellin swabs after the removal from their sterile packaging and can be used by both laypersons and healthcare professionals. The product has an application duration of 10 years, after which it should not be used.

Content

The Pur-Zellin Box comprises a unit with a flap, a lid with a blue shield, a roll holder spindle and instructions for use.

Product Usage Instructions

Disinfection

1. The Pur-Zellin Box must be disinfected from the inside and the outside before the first use and each time the roll is replaced. First, disinfect hands. Then disassemble the box completely (only the flap may remain attached to the unit). The area directly around the flap must be disinfected in its open and closed position.
2. The blue shield can be detached from the lid by pulling the ring and can be easily snapped back in place.

Installation of swab roll

1. With the flap open, remove the Pur-Zellin roll from its sterile packaging and push it onto the spindle. Place the spindle on the holders inside the box so that the swabs can be pulled out from below the roll. Pull the roll until the first row of swabs lie on the flap.
2. Now put the lid on the box. The blue shield prevents access to the inside of the box through the opened flap. The swabs should protrude only slightly below the shield.
3. Finally, close the flap.

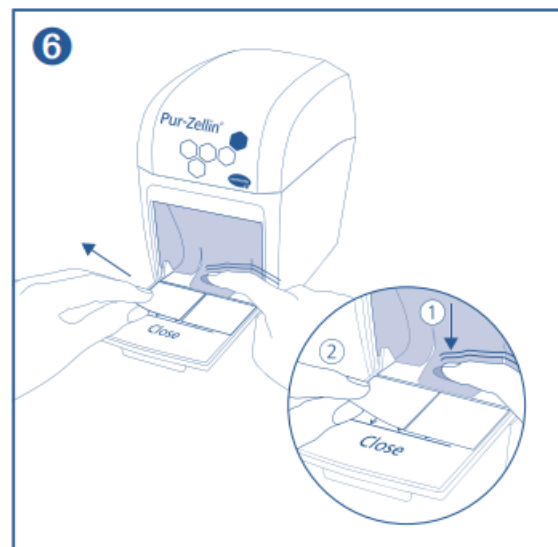
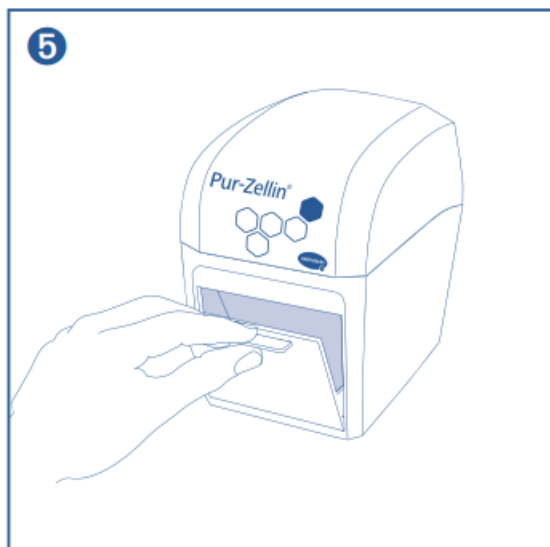
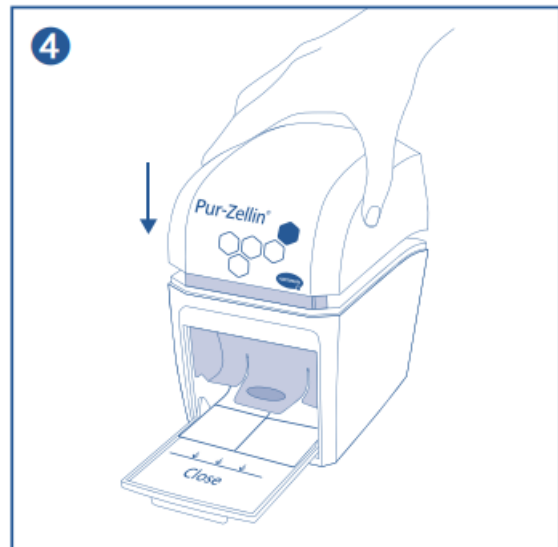
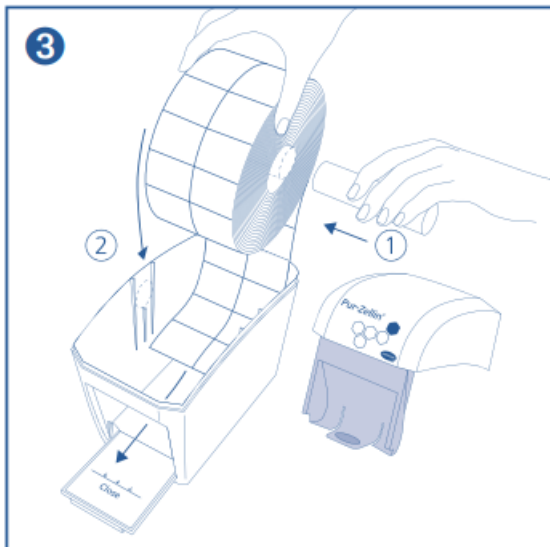
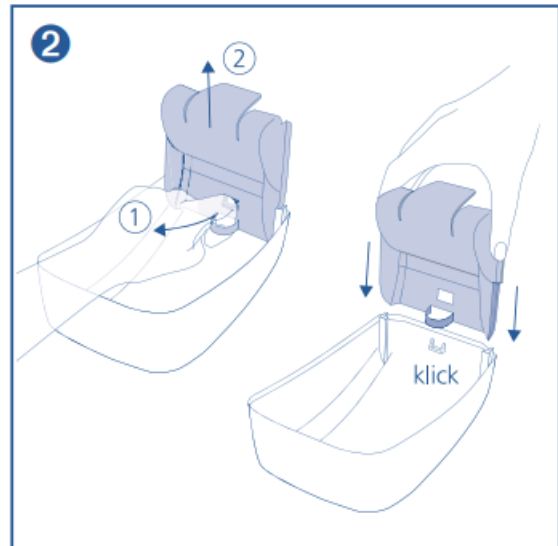
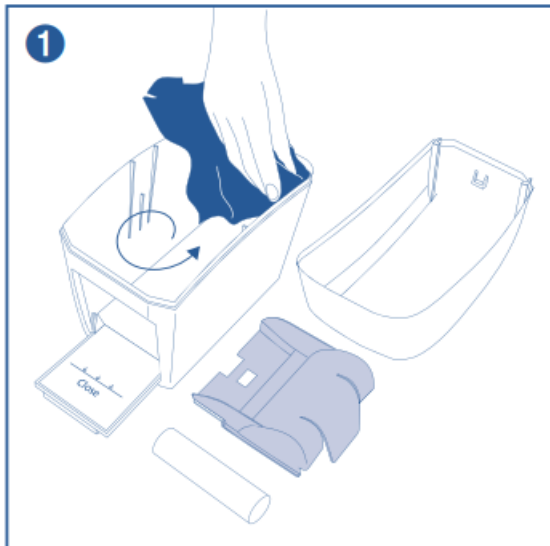
Removal of swabs

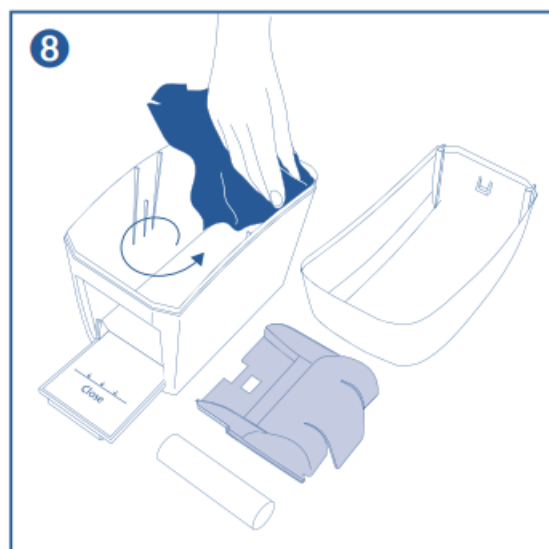
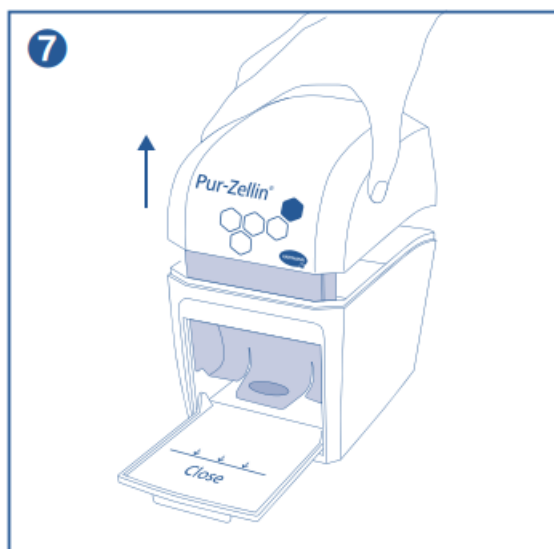
1. To remove swabs, open the flap and disinfect hands.
2. Now pull out the swabs from under the shield until the next perforation becomes visible (do not pull the swabs any further than the printed line on the flap). Press down the blue shield with one finger and tear off the swab at the perforation. Swabs that have been pulled out too far must be disposed of. Do not push them back into the

- box through the opening underneath the shield or let them get stuck between the shield and the flap.
3. Close the flap immediately after you have removed the swabs.

Replacement of swab roll

- When the Pur-Zellin roll is empty, open the lid of the box, remove any remaining swabs inside and dispose of them.
- Before inserting a new swab roll, disinfect hands and carry out a wipe-down disinfection of the box as described above.





Application notes

- For cleansing and disinfection HARTMANN recommends Bode products. For wipe disinfection, use an alcoholic (30 %) surface disinfectant, for example BacilloI 30. Alternatively the Pur-Zellin Box can be placed in a cleaning and disinfection device. For this, disassemble the Pur-Zellin Box into its individual parts (top part, roll, blue shield, lower part and flap); machine: washer-disinfector; cleansing and disinfecting agent: liquid, alkaline disinfectant detergent, for example Dismoclean 28 alka med, concentration: 0.5 %; process water total hardness: 0,18 -1,25 mmol/l; program sequence: pre-rinse with cold water for 3 min., thermally disinfect with Dismoclean 28 alka med at 70°C for 5 min., rinse with process water at 70°C for 3 min., dry at 90°C for 10 min.
- You should also observe the on-site hygiene procedures for personal hygiene and disinfection of surroundings.
- After disinfection and before reassembly, the Pur-Zellin Box must only be handled with disinfected hands.
- If the box is stored, ensure that all parts are stored inside the box itself. Before re-using the box, the box must be disinfected as described above.

Special notes

- The word 'Close' on the flap of the box indicates to the user that the flap must be closed after removing a swab.
- The Pur-Zellin Box must be replaced if the unit or flap becomes damaged.
- If these instructions for use are followed correctly, the Pur-Zellin Box will last for 10 years. After this time the box should be disposed of.

Product disposal

To minimize the risk of potential infection hazards or environmental pollution, disposable components of Pur-Zellin Box should follow disposal procedures according to applicable and local laws, rules, regulations and infection prevention standards.

Incident reporting

For a patient/user/third party in the European Union and in countries with identical regulatory regime (Regulation 2017/745/EU on Medical Devices); if, during the use of this device or as a result of its use, a serious incident has occurred, please report it to the manufacturer and/or its authorized representative and to your national authority.

Documents / Resources



[HARTMANN Pur-Zellin Box Storage Box for Cellulose Swabs](#) [pdf] Instruction Manual
Pur-Zellin Box Storage Box for Cellulose Swabs, Pur-Zellin Box, Storage Box for Cellulose Swabs, Cellulose Swabs, Swabs, Storage Box, Box

References

- [🏠 Home](#)
- [📦 Distributore Pur Zellin](#)