

[Skip to content](#)

Manuals+

User Manuals Simplified.



HARMONY 0801006NTL Play and Go All-In-One Portable Playard Instruction Manual

[Home](#) » [HARMONY](#) » HARMONY 0801006NTL Play and Go All-In-One Portable Playard Instruction Manual

Contents [hide](#)

[1 HARMONY 0801006NTL Play and Go All-In-One Portable Playard](#)

[2 PARTS LIST](#)

[3 PLAYARD SETUP](#)

[4 BASSINET SETUP](#)

[5 CHANGING TABLE SETUP](#)

[6 WARRANTY](#)

[7 Documents / Resources](#)

[8 Related Posts](#)



HARMONY 0801006NTL Play and Go All-In-One Portable Playard



Read all instructions BEFORE assembly and USE of product. KEEP INSTRUCTIONS FOR FUTURE USE. Do not use this product until you read and understand the instructions in the

WARNING!

FOR YOUR CHILD'S SAFETY, FOLLOW ALL LABELS ON THIS PRODUCT AND IN THESE WRITTEN INSTRUCTIONS. DO NOT USE THIS PLAYPEN IF YOU CANNOT EXACTLY FOLLOW THE INSTRUCTIONS THAT COME WITH IT. FAILURE TO FOLLOW THESE WARNINGS AND THE INSTRUCTIONS COULD RESULT IN SERIOUS INJURY OR DEATH.

!Check this playpen regularly before using it, and DO NOT use it if any part is loose or missing or if there are any signs of damage. DO NOT substitute parts. Contact the manufacturer if replacement parts or additional instructions are needed.

Contact Harmony Juvenile Products at 1-877-306-1001 or www.harmonyjuvenile.com.

PLAYARD WARNINGS

WARNING!

FAILURE TO FOLLOW THESE WARNINGS, THE LABELS AND THE INSTRUCTIONS COULD RESULT IN SERIOUS INJURY OR DEATH.

- The product, including side rails, must be fully erected prior to use.
Ensure that the sides of this playpen are properly latched or locked in the appropriate position before placing a child in it.
- NEVER LEAVE child in product with SIDE LOWERED. Be sure side is in raised and locked position whenever child is in product.
- DO NOT use this playpen for a child who can climb out of it or who is taller than 90 cm.
Children can suffocate on soft bedding. DO NOT place pillows, comforters or an additional floor pad in this playpen.
- When child is able to pull to standing position, set mattress/base to lowest adjustment position and remove bumper pads, large toys, and other objects that could serve as steps for climbing out.
- Use ONLY mattress/pad provided by manufacturer.
- ALWAYS provide the supervision necessary for the continued safety of your child. When used for playing,
- NEVER leave child unattended. Child MUST be under supervision at all times.
- To reduce the risk of SIDS (sudden infant death syndrome), pediatricians recommend healthy infants be placed on their back to sleep, unless otherwise advised by your physician.
- NEVER use a water mattress with this product.
- NEVER refinish this product.

BASSINET WARNINGS

WARNING!

FAILURE TO FOLLOW THESE WARNINGS, THE LABELS AND THE INSTRUCTIONS COULD RESULT IN SERIOUS INJURY OR DEATH.

ENSURE that all bassinet fabric lies FLAT and TAUGHT against the playard frame, and that the bassinet corners are secure with the hook-and-loop strips.

- DO NOT use this accessory if you cannot exactly follow the instructions that come with it.
- Remove this accessory when a child is in the playpen.
- DO NOT use this accessory for a child who can roll over or who has reached 15 lbs. (6.8 kg).
- FALL HAZARD-Always check that the bassinet is securely locked on the frame by pulling upwards.

WARNING!

SUFFOCATION HAZARD-Infants have suffocated:

- In gaps between extra padding and side of the bassinet/cradle, and
- On soft bedding

Use

ONLY the pad provided by manufacturer.

NEVER add a pillow, comforter, or another mattress for padding.

- To reduce the risk of SIDS, pediatricians recommend healthy infants be placed on their backs to sleep, unless otherwise advised by your physician.
- If a sheet is used with the pad, USE ONLY the one provided by the bassinet or cradle manufacturer or one specifically designed to fit the dimension of the bassinet or cradle mattress.
- DO NOT place any cord, strap or similar item in or near this accessory that could become wrapped around a child's neck.
- Check this accessory regularly before using it, and DO NOT use it if any part is loose or missing or if there are any signs of damage. DO NOT substitute parts. Contact the manufacturer if replacement parts or additional instructions are needed.
- Children can suffocate on soft bedding. DO NOT place pillows, comforters or an additional mattress pad in this accessory.

GENERAL WARNINGS

- DO NOT leave a child unattended in this playpen.
- DO NOT use this playpen if you cannot exactly follow the instructions that come with it.
- NEVER carry or move the play yard with child in it.
- AVOID SERIOUS INJURY by keeping fingers clear of rail joints, top corners, and from any moving parts when assembling/adjusting the product to prevent pinching and/or finger entrapment.
- ENSURE that play yard is fully erected before each use. Check that:
 - Four (4) top rails are completely LOCKED by pushing down on them;
 - The center of the floor is completely PUSHED DOWN;
 - The mattress is lying flat and is secured with all four (4) hook-and-loop straps.
- NEVER use the play yard on uneven or unsafe surfaces.
- NEVER use near stoves, heaters or other heat sources.
- ALWAYS keep the play yard away from hazards that may injure your child.
- DO NOT change, tamper with or modify any part of this product.
- DO NOT use this product if it is damaged in any way or has missing parts.
- DO NOT allow children to climb into or out of the play yard, or to hang onto the outside of the play yard to avoid tipping the product.
- NEVER hang anything other than accessories that come with this product on this play yard as it could cause the product to become unstable.
- Extended exposure to weather could affect colour.
- DO NOT, EXCEPT AS DESCRIBED IN THESE INSTRUCTIONS, MODIFY THIS PRODUCT OR DISASSEMBLE ANY PART.
- This includes adding any parts or accessories by other manufacturers as non-tested accessories can affect the safety of the product.
- This product is NOT intended for commercial use.

SUFFOCATION WARNINGS

WARNING!

NEVER LEAVE INFANT IN PRODUCT WITH SIDES DOWN. Infant may roll into space between pad and loose mesh side causing suffocation.

WARNING!**INFANTS CAN SUFFOCATE**

- In gaps between a mattress too small or too thick and product sides
- On soft bedding
NEVER add a mattress, pillow, comforter, or padding. Use only the mattress/pad provided by manufacturer.
- DO NOT place any cord, strap or similar item in or near this playpen that could become wrapped around a child's neck.
- DO NOT place this playpen near a window or patio door where a child could reach the cord of a blind or curtain and be strangled.
- NEVER place the play yard in any location where there are cords within the child's reach, such as telephone cords, window blind cords, monitor cords, etc. as they can strangle a child.
- NEVER attach strings to toys.
- NEVER use plastic shipping bags or other plastic film as mattress covers not sold and intended for that purpose.
- They can cause suffocation.
- Small children and pets can force themselves into very small openings.
- NEVER tie anything to/in the play yard (i.e. accessories, toys, monitors, etc.) as this may cause serious injury or death.
- SUFFOCATION HAZARD: Babies have suffocated while sleeping on changing tables: changing table is NOT designed for safe sleep.
- NEVER allow baby to sleep or play on changing table.
- STRANGULATION HAZARD: Child can lift changing table and get neck trapped between changing table and playard frame. ALWAYS remove the changing table when your child is in the playard.
- NEVER place baby face down on the changing table.

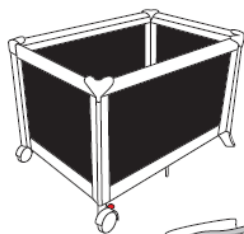
CHANGING TABLE WARNINGS**WARNING!**

- FALL HAZARD Children have suffered serious injuries after falling from changing tables. Falls can happen quickly.
- DO NOT leave a child unattended in or on this accessory.
- ALWAYS secure this unit to the support frame by fastening the plastic C-clips onto short rail of playard.
- DO NOT use this accessory if you cannot exactly follow the instructions that come with it.
- I Remove this accessory when a child is in the playpen.
- SUFFOCATION HAZARD: Babies have suffocated while sleeping on changing tables: changing table is NOT designed for safe sleep.
- I DO NOT put a child to sleep or leave a sleeping child in or on this accessory.
- STRANGULATION HAZARD: Child can lift changing table and get neck trapped between changing table and playard frame. ALWAYS remove the changing table when your child is in the playard.
- NEVER place baby face down on the changing table.
- DO NOT use this accessory for a child who has reached 15 lbs. (6.8 kg).
- DO NOT use the changing table as extra storage
- DO NOT use changing table if it is damaged or broken.
- This product is NOT intended to be used as a changing table without this Harmony playard model.
- DO NOT use on the floor, bed, counter or other surfaces.
- Use of the product without playard may result in death or serious injury to your child from falling.
- Follow ALL instructions on attaching and using the changing table.
- ENSURE changing table is properly secured to playard
- BEFORE EACH USE by holding the changing table plastic side panels and pushing downwards.
- ALWAYS remove the changing table when child is in the playard or bassinet.

TOY BAR WARNINGS**WARNING!****TOY BAR CAN CAUSE ENTANGLEMENT OR STRANGULATION INJURIES: KEEP OUT OF CHILD'S REACH.**

- DO NOT use this accessory if you cannot exactly follow the instructions that come with it.
- Remove this accessory when a child is in the playpen.
- Recommended use: from birth to 5 months.
- Toy bar and toys are intended for visual stimulation ONLY, and are NOT intended to be grasped or mouthed by the child.
- ENSURE that the toy bar and toys are always out of reach of the child.
- Remove toy bar from play yard/bassinet when child begins to push up on hands and knees.
- ALWAYS attach toy bar securely to the play yard as per these instructions. Check frequently.
- ALWAYS attach all provided fasteners (strings, straps, d-lamps, etc.) tightly to the play yard according to these instructions.
- Check frequently.
- DO NOT add additional strings or straps to attach the toys or toy bar to the play yard.

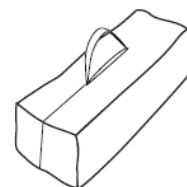
PARTS LIST



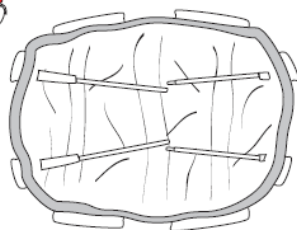
**Playard
Parc**



**Mattress
Matelas**



**Carry case
Sac de
transport**



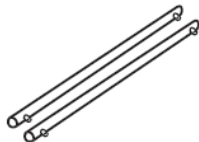
**Bassinet with
pre-installed bars
Lit d'enfant avec
barres préinstallées**



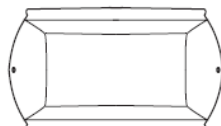
**Organizer
with 2 hooks
Système de rangement
x2 avec 2 crochets**



**Changing Table
plastic side panels (x2)
Panneaux latéraux en**



**Changing Table metal
support bars (x2)
Barres de support**



**Changing Table fabric
with 2 plastic 'C'-clips
Tissu de la Table à**



Toy bar with Toys*

Toys may vary.

PLEASE CHECK TO BE SURE YOU HAVE ALL THE PARTS SHOWN BEFORE BEGINNING ASSEMBLY. IF YOU ARE MISSING ANY PARTS, PLEASE DO NOT RETURN THIS PRODUCT TO THE STORE. PLEASE CALL OUR CUSTOMER SERVICE DEPARTMENT AT 1-877-306-1001 OR CONTACT US AT CUSTOMERSERVICE@HARMONYJUVENILE.COM.

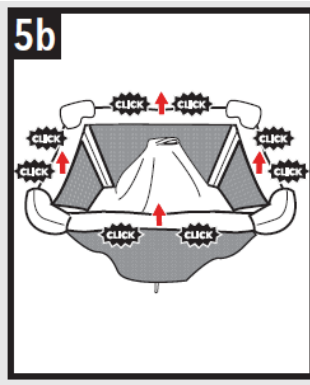
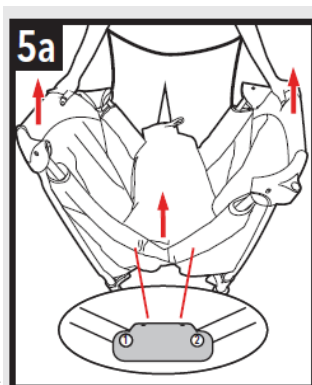
PLAYARD SETUP

1. Remove all contents from packaging, and discard box and polybags.
2. The playard comes packed within the carry case and wrapped within the mattress:
 1. Remove playard/mattress assembly.
MATTRESS FOAM MAY BE INDENTED FROM PACKING ALLOW UP TO 48 HOURS FOR MATTRESS FOAM TO FULLY DECOMPRESS.
3. **TO OPEN:**



Open the three (3) hook-and-loop straps securing the mattress.

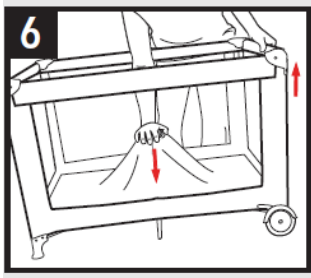
4. Stand playard on feet and wheels with the CENTER UP.
Do NOT push center locking mechanism down yet.
 1. ALL FOUR RAILS MUST BE SECURELY LOCKED AND RIGID BEFORE CENTER LOCKING MECHANISM IS PUSHED DOWN.
5. Each railing has TWO (2) locks as shown. Both locks on each railing MUST 'click' and lock for the playard to be secure:
 1. Grasp railing firmly and lift upwards. You will hear TWO (2) 'clicks'.



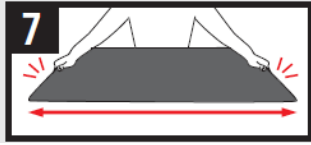
WARNING!

2. Repeat on all four (4) rails
NEVER LEAVE CHILD IN PRODUCT WITH SIDE LOWERED. Be sure side is in raised and locked position whenever child is in product.
6. Slightly lift one end of the playard and push center locking mechanism down.

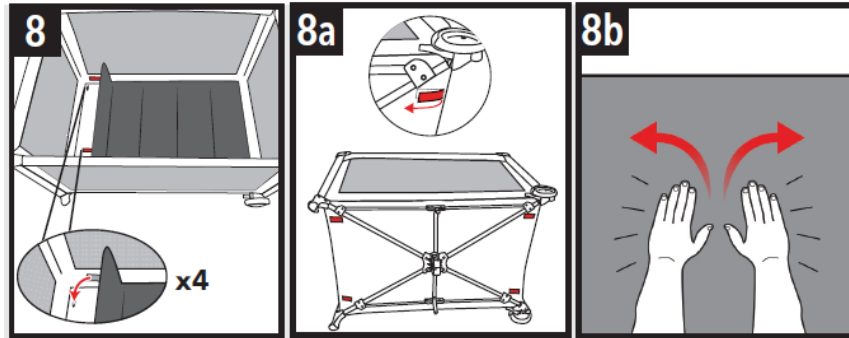
1. ENSURE all railings are securely locked by pushing down on each rail. If rail is not locked, re-lift center locking mechanism and pull up again until rail 'clicks' into its locked position. If rails do not lock, lift the center locking mechanism HIGHER.



7. Grasp mattress and pull outward gently while placing into playard. Place mattress into playard ENSURING padded side up.



8. Secure mattress to playard by inserting all four (4) hook-and-loop straps through the corresponding holes in the playard floor, and securely



adhering underneath as shown.

mattress to ensure it is securely fastened in place.

b. Smooth out mattress by placing both hands at the center of the mattress and move outwards.

Ensure all boards and foam are completely flat.

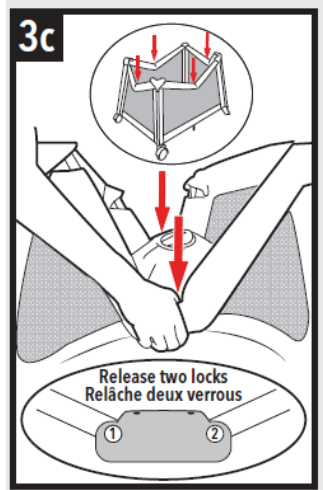
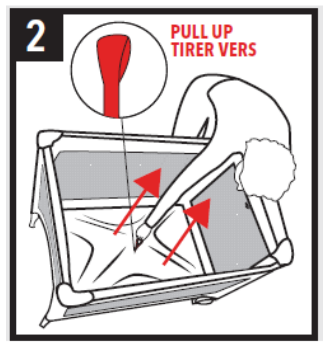
a. Pull upwards on

WARNING!

Infants can suffocate in gaps between the mattress. ENSURE that the mattress is securely fastened in place. Lift mattress to ensure it is securely attached.

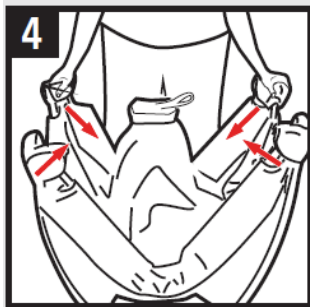
TO FOLD:

1. Release four (4) hook-and-loop straps attaching the mattress to the Playard, and remove mattress.
2. Identify the fabric strap on the center locking mechanism on the floor of the playard.
Pull upwards to the height of the rails.

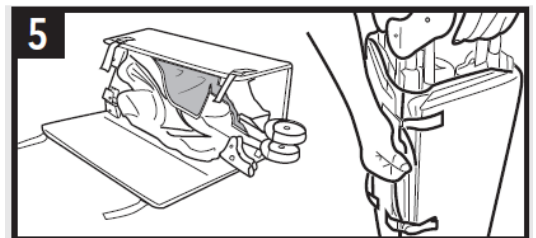


NOTE: Rails will NOT unlock until center floor locking mechanism is pulled up.

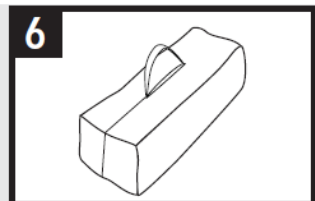
3. To unlock each rail:
 - a. Place hand over the center of each rail's locking mechanism.
 - b. While grasping the rail, lift slightly and sQUEEZE the unlocking mechanism to unlock. Then push down while squeezing the mechanism.
 - c. BOTH sides of each rail's locking mechanism must be released/unlocked for the rail to fold downwards.
1. IF TOP RAILS DO NOT UNLOCK, DO NOT FORCE THEM DOWNWARDS. RETURN RAIL BACK TO LOCKED POSITION AND REPEAT STEPS. IF YOU CONTINUE TO HAVE TROUBLE, LIFT CENTER LOCKING MECHANISM HIGHER.



4. Move railings towards center.



5. Wrap mattress around Playard and fasten hook-and-loop straps to secure as shown.
6. Insert mattress/playard assembly into carry case ensuring case is fully zipped when closing. Store bassinet and toy bar in bag.



BASSINET SETUP

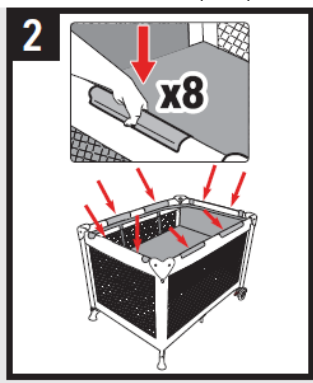
WARNING!

Play yard must be fully erected prior to bassinet setup, and mattress must be removed.

1. Align short and long sides with playard railings.
2. Fasten EIGHT (8) bassinet railing clips to the playard as shown.

TIP: IT IS EASIEST TO START WITH THE CORNER CLIPS.

- a. Spread each bassinet clip so that the bassinet fabric lies **FLAT** and **TAUGHT** against the playard frame.
- b. Secure the hook-and-loop strips to each bassinet corner ensuring that the bassinet corners are **FLAT** and **TAUGHT** against the playard



frame.

WARNING!

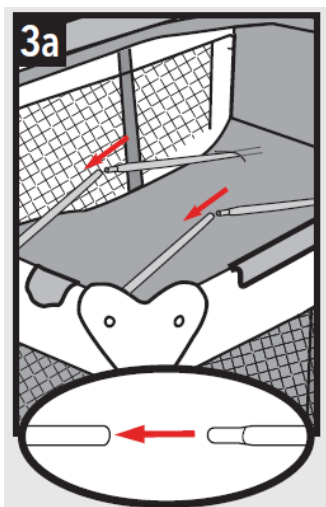
ENSURE that all bassinet clips are flat and securely installed!

ENSURE that all bassinet fabric lies **FLAT** and

TAUGHT against the playard frame, and that the bassinet corners are secure with the hook-and-loop strips.

FALL HAZARD Always check that the bassinet is securely locked on the base/stand.

3. Connect opposing bassinet bars that are pre-installed onto the bottom of the bassinet.



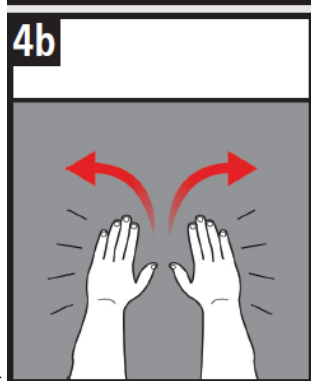
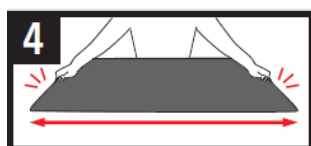
- a. Insert tapered end of bar into end of other bar with hole in it. Repeat with other set of bars.

1. **BASSINET BARS MUST BE ASSEMBLED BEFORE PLACING MATTRESS IN BASSINET.**

4. Grasp mattress and pull outward gently while placing into bassinet. Place mattress into bassinet **ENSURING** padded side up and all four (4) hook-and-loopP patches under the mattress are attached to matching hook-and- lOop patches on the bassinet.

- a. Pull upwards on mattress to ensure it is securely fastened in place.

- b. Smooth out mattress by placing both hands at the center of the mattress and move outwards. Ensure all boards and foam are completely



flat.

WARNING!

Infants can suffocate in gaps between the mattress

ENSURE that the mattress is securely fastened in place. Lift mattress to ensure it is securely attached.

CHANGING TABLE SETUP

NOTE: Metal support bars come pre-installed in the changing table fabric and one of the bars **MUST** hold the plastic 'C clips in place. Slide out metal support bar and insert the "C-clip fabric loop into the changing table fabric. Slide metal support bar through fabric and loop.

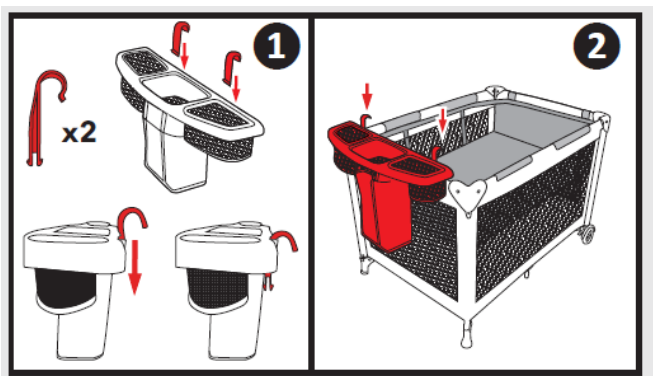
1. Align all four (4) release buttons on all four (4) ends of the two (2) metal support bars on the changing table with the holes on the changing table plastic side panels 1
2. Insert all 4 bar ends until you hear a 'click and the locking pin is engaged
3. Ensure the metal support bar is locked into the plastic panel by gently pulling on it.
4. Attach the snap fasteners on the fabric to the plastic side panels.
5. Place changing table on the top rails of the playard and securely fasten plastic's clips onto short rail of playard



6. When not in use, changing table can be flipped over the playard to hang by the 'C-clips

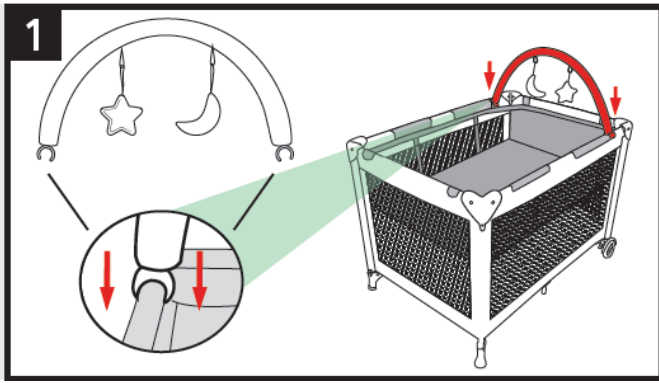
ORGANIZER SETUP

1. Align hooks as shown .
2. Slide plastic hooks into openings onto top left and right sides of the organizer until they are fully engaged. Pull up on hooks to ensure they do not disengage from the organizer.
3. Fasten the plastic hooks securely onto any rail of the playard 2.



TOY BAR SETUP

1. Align toy bar railing clips on the playard as shown.
Press toy bar clips firmly onto playard rails as shown.



CARE AND MAINTENANCE

- From time to time, check your Playard for worn parts, torn material or stitching. Replace or repair the parts as needed.
- If playard is used at the beach, you **MUST** clean sand off your playard, including the feet, before packing it into carry case. Sand may damage top rail lock.
- The playard and mattress are surface wash only. Use only household soap or detergent and warm water.
- To wash carry case, machine wash in warm water on delicate cycle and drip-dry. **DO NOT USE BLEACH.**
- To wash changing table, hand wash with a damp cloth. **DO NOT USE BLEACH.**

WARRANTY

This product was manufactured by Harmony Juvenile Products (HJP). HJP warrants this product to the original retail purchaser as follows:

LIMITED 1-YEAR WARRANTY

This product is warranted against defective materials and workmanship for one year from the date of original purchase.

An original receipt is required to validate your warranty. HJP will, at its option, provide replacement parts for this product or replace this product. HJP reserves the right to discontinue or change fabrics, parts, models or products, or to make substitutions

To make a claim under this warranty, you must contact

Customer Service at www.harmonyjuvenile.com, or call

1-877-306-1001, or write to 2435 rue Guénette, Montreal,

Quebec, Canada, H4R 2E9.

Proof of purchase is required and shipping charges are the responsibility of the consumer.

WARRANTY LIMITATIONS

This warranty does not include damages which arise from negligence, misuse, or use not in accordance with this instruction manual.

LIMITATIONS OF DAMAGES

The warranty and remedies as set forth above are exclusive and in lieu of all others, oral or written, expressed or implied. In no event will HJP or the retailer selling this product be liable for damages, including incidental or consequential damages, arising out of the use or inability to use the product.

PLEASE REGISTER THIS PRODUCT PURCHASE TO EXPEDITE WARRANTY VERIFICATION

Documents / Resources



[HARMONY 0801006NTL Play and Go All-In-One Portable Playard](#) [pdf] Instruction Manual

0801006NTL, Play and Go All-In-One Portable Playard, 0801006NTL Play and Go All-In-One Portable Playard

Manuals+

- [home](#)
- [privacy](#)