



HARMAN KAPPA603CF Kappa Series Component Speaker System Instruction Manual

[Home](#) » [Harman](#) » HARMAN KAPPA603CF Kappa Series Component Speaker System Instruction Manual 

Contents

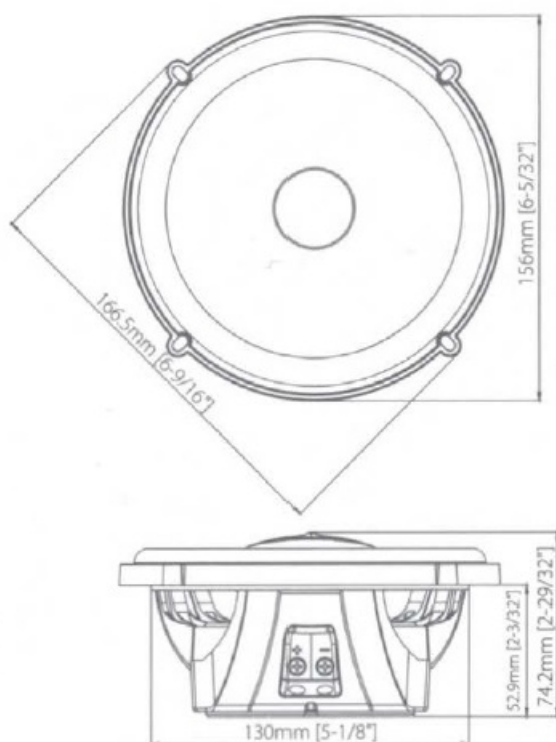
- [1 HARMAN KAPPA603CF Kappa Series Component Speaker System](#)
- [2 Dimension](#)
- [3 WHAT'S IN THE BOX](#)
- [4 HOW TO USE](#)
- [5 Features](#)
- [6 SERIES](#)
- [7 Technical Specifications](#)
- [8 Documents / Resources](#)
 - [8.1 References](#)
- [9 Related Posts](#)

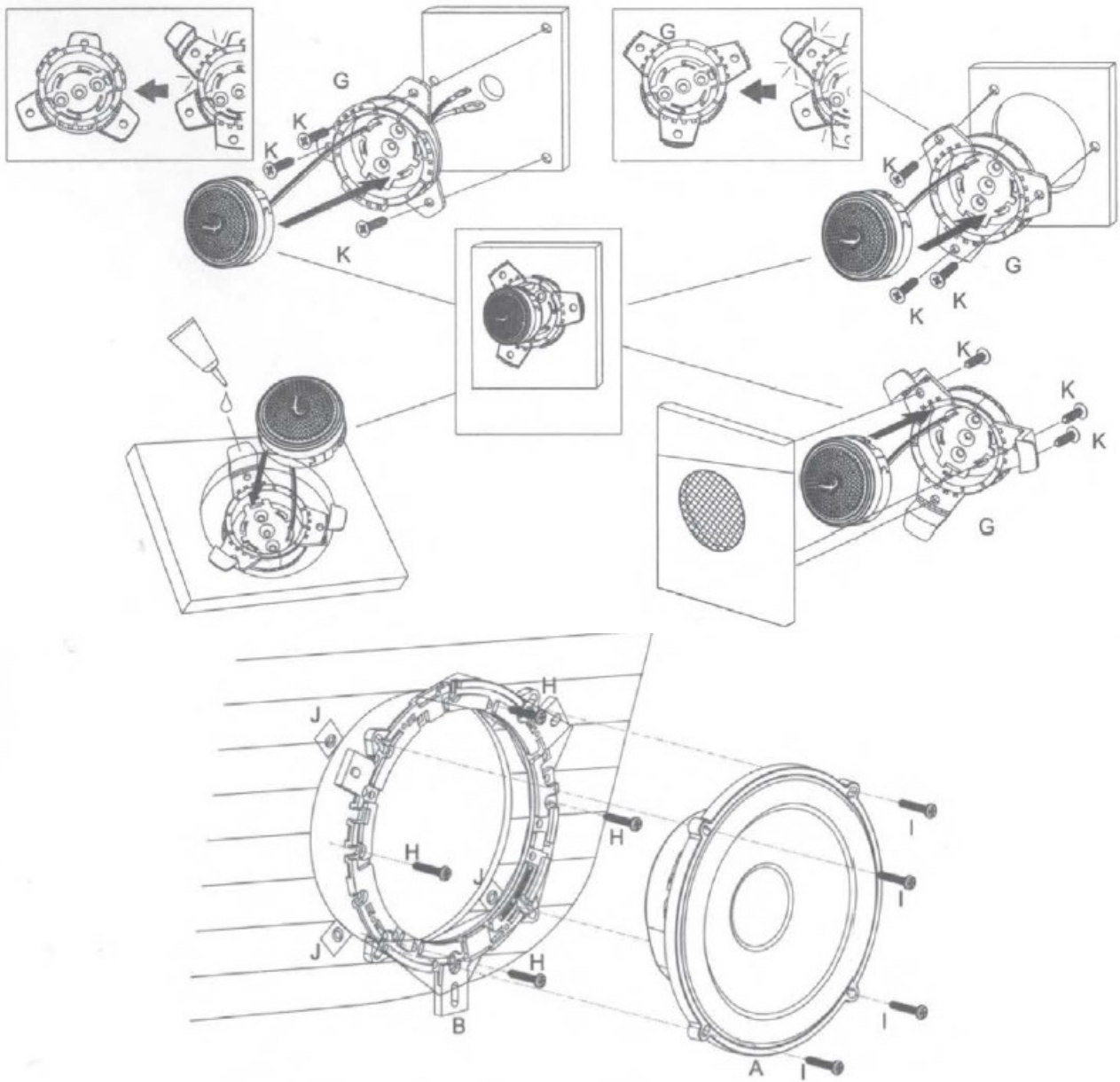


HARMAN KAPPA603CF Kappa Series Component Speaker System

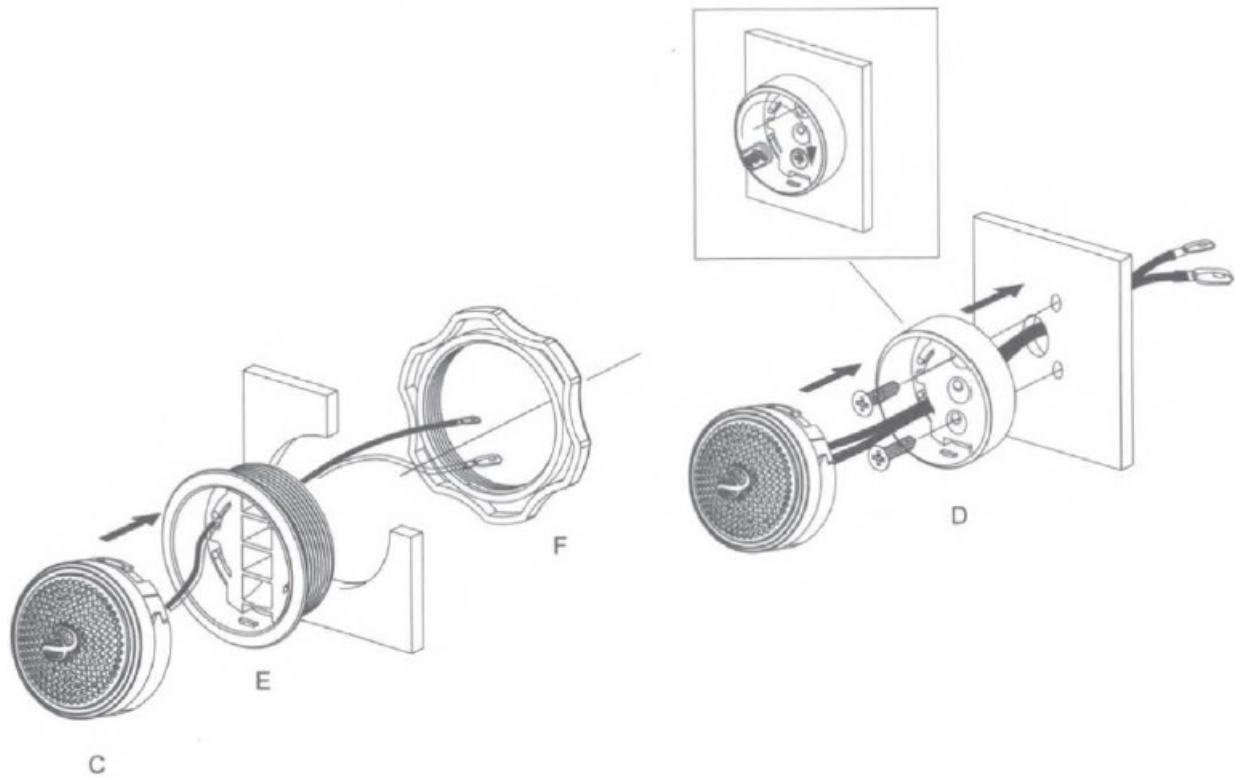


Dimension





A	B	C	D	E	F	G	H	I	J	K
X2	X2	X2	X2	X2	X2	X2	X8	X8	X8	X8



HARMAN International Industries, Incorporated, 8500 Balboa Boulevard, Northridge, CA 91329 USA © 2020
HARMAN International Industries, Incorporated. All rights reserved. Infintiy is a trademark of HARMAN
International Industries, Incorporated, registered in the United States and/or other countries. Features,
specifications and appearance are subject to change without notice.

Kappa Car Speakers. Make Your Drive Come Alive.

Infinity Kappa Series speakers, available in all standard sizes, are designed to bring a new standard of excellence in car audio to virtually any vehicle. Kappa's Plus One™ fiberglass woofers deliver high-output, deep and robust bass. The high-resolution 3/4" edge-driven textile dome tweeters deliver soaring highs up to 40kHz. 2" and 3" midranges are available to upgrade two-way component systems into a three-way. The compact 3" midrange speakers also offer a perfect plug-and-play solution with low-frequency response to 300Hz, and high sensitivity.

Features

- 40kHz High-resolution Silk Dome Tweeter
- Patented Plus One™ Glass Fiber Woofers
- 0dB or -3dB Tweeter Output Level Control
- UniPivot and Angled Tweeter
- 3-way Upgradability
- Super Compact Design and High Sensitivity
- 3" Midrange Speaker
- Sleek and Powerful Industry Design
- Slim and Smart Crossover Design

SERIES



Features and Benefits

- 40kHz High-resolution Silk Dome Tweeter**
 Kappa edge-driven silk dome tweeters equipped with oversized voice coils deliver silky smooth highs with impressive thermal power handling and 40kHz high resolution.
- Patented Plus One™ Glass Fiber Woofers**
 Infinity's glassfiber woofer cones are lighter and stiffer with more cone-area than the competition, delivering increased low-frequency output and higher efficiency. Hearing is believing.
- 0dB or -3dB Tweeter Output Level Control**
 The push-button on the angled tweeter allows tweeter output level control of 0dB or -3dB to optimize system linearity based on installation location.
- UniPivot and Angled Tweeter**
 For 5-1/4", 6-1/2" and 6" x 8" coaxial models, the tweeters are angled and can be rotated 270° after installation on most models. This gives you imaging options and the ability to elevate the soundstage on low mounted speakers.
- 3-way Upgradability**
 Kappa 2-way component system crossovers are compact and equipped with 2-way and 3-way selections to accommodate a 2" or 3" midrange upgrade. The optional 2" or 3" midrange includes a bandpass crossover to upgrade a two-way system into a three-way system with perfect tonal balance.
- Super Compact Design and High Sensitivity 3" Midrange Speaker**
 Kappa 3" midrange delivers low-frequency response to 300Hz while keeping high sensitivity over 89dB. The super compact design and premium performance allows the midrange to fit more vehicles without sacrificing any of your audio experience.
- Sleek and Powerful Industry Design**
 The essence of form and function, Kappa tweeters are elegantly designed deliver a car audio experience as powerful as it is beautiful.
- Slim and Smart Crossover Design**
 Kappa component systems all have very slim crossovers, which equipped with connection cable for easy installation. The push-button on crossover allows tweeter output level control of 0dB or -3dB to optimize system linearity based on installation location.

What's in the box:

- KAPPA 63XF
 - 2x Speakers
 - 2x Plastic multi-hole adapter rings 2x Foam gaskets
 - 8x Screws
 - 8x Screws
 - 8x Speed clips
 - 2x Infinity logo badges
 - 2x Brand stickers
 - Owner's manual
- KAPPA 603CF
 - 2x Speakers
 - 2x Plastic multi-hole adapter rings 2x Foam gaskets
 - 2x Crossovers
 - 2x Tweeters
 - 2x Threaded flush-mount adapters 2x Plastics locking nuts
 - 2x Surface-mount cups
 - 2x Starfish tweeter mounts
 - 30x Screws
 - 16x Speed clips
 - 1x Allen head bit (2.5mm)
 - 2x Infinity logo badges
 - 2x Brand stickers
 - Owner's manual
- KAPPA 693M
 - 2x Speakers
 - 2x Grilles
 - 2x Foam gaskets
 - 2x Spacers
 - 8x Screws
 - 8x Speed clips
 - 2x Infinity logo badges
 - 2x Brand stickers
 - Owner's manual
- KAPPA 693C
 - 2x Speakers
 - 2x Grilles
 - 2x Spacers
 - 2x Foam gaskets
 - 2x Crossovers
 - 2x Tweeters
 - 2x Threaded flush-mount adapters 2x Plastic locking nuts
 - 2x Surface-mount cups

- 2x Starfish tweeter mounts
- 22x Screws
- 16x Speed clips
- 1x Allen head bit (2.5mm)
- 2x Infinity logo badges
- 2x Brand stickers
- Owner's manual
- KAPPA 683XF
 - 2x Speakers
 - 2x Spacers
 - 2x Foam gaskets
 - 8x Screws
 - 8x Speed clips
 - 2x Infinity logo badges
 - 2x Brand stickers
 - Owner's manual
- KAPPA 463XF
 - 2x Speakers
 - 2x Foam gaskets
 - 8x Screws
 - 8x Speed clips
 - 2x Infinity logo badges
 - 2x Brand stickers
 - Owner's manual
- KAPPA 53XF
 - 2x Speakers
 - 2x Foam gaskets
 - 8x Screws
 - 8x Speed clips
 - 2x Infinity logo badges
 - 2x Brand stickers
 - Owner's manual
- KAPPA 503CF
 - 2x Speakers
 - 2x Foam gaskets
 - 2x Crossovers
 - 2x Tweeters
 - 2x Threaded flush-mount adapters
 - 2x Plastics locking nuts
 - 2x Surface-mount cups
 - 2x Starfish tweeter mounts
 - 22x Screws
 - 16x Speed clips

- 1x Allen head bit (2.5mm)
- 2x Infinity logo badges
- 2x Brand stickers
- Owner's manual
- KAPPA 203S
 - 2x Midrange driver
 - 2x Grilles
 - 2x Crossovers
 - 2x Cables
 - 2x Custom Fit Mounting Adapters
 - 2x Foam gaskets
 - 24x Screws
 - 8x Speed clips
 - 1x Allen head bit (2.5mm)
 - 2x Infinity logo badges
 - 2x Brand stickers
 - Owner's manual
- KAPPA 303S
 - 2x Midrange driver
 - 2x Grilles
 - 2x Crossovers
 - 2x Cables
 - 2x Foam gaskets
 - 16x Screws
 - 8x Speed clips
 - 1x Allen head bit (2.5mm)
 - 2x Infinity logo badges
 - 2x Brand stickers
 - Owner's manual
- KAPPA 753T
 - 2x Tweeters
 - 2x Threaded flush-mount adapters
 - 2x Plastic locking nuts
 - 2x Surface-mount cups
 - 2x Starfish tweeter mounts
 - 6x Screws
 - 2x Crossovers
 - 2x Infinity logo badges
 - 2x Brand stickers
 - Owner's manual

Technical Specifications

- KAPPA 63XF
 - 6-1/2" (165mm) Two-way Car Speaker
 - Power Handling: 85Wrms, 255W peak
 - Sensitivity (@ 2.83V): 93dB
 - Frequency Response: 45Hz – 40kHz
 - Impedance: 3.0 ohms
 - Gross weight: 2.56kg
- KAPPA 603CF
 - 6-1/2" (165mm) Two-way Component Speaker System Power Handling: 110Wrms, 330W peak
 - Sensitivity (@ 2.83V): 93dB
 - Frequency Response: 45Hz – 40kHz
 - Impedance: 3.0 ohms
 - Gross weight: 2.9kg
- KAPPA 693M
 - 6" x 9" (168mm x 240mm) Three-way
 - Car Speaker
 - Power Handling: 120Wrms, 360W peak
 - Sensitivity (@ 2.83V): 94dB
 - Frequency Response: 35Hz – 40kHz
 - Impedance: 3.0 ohms
 - Gross weight: 5.04kgs
- KAPPA 693C
 - 6" x 9" (168mm x 240mm) Two-way
 - Component Speaker System
 - Power Handling: 145Wrms, 435W peak
 - Sensitivity (@ 2.83V): 94dB
 - Frequency Response: 35Hz – 40kHz
 - Impedance: 3.0 ohms
 - Gross weight: 5.26kg
- KAPPA 683XF
 - 6" x 8" (147mm x 205mm) Two-way
 - Car Speaker
 - Power Handling: 100Wrms, 300W peak
 - Sensitivity (@ 2.83V): 93dB
 - Frequency Response: 40Hz – 40kHz
 - Impedance: 3.0 ohms
 - Gross weight: 2.862kg
- KAPPA 463XF
 - 4" x 6" (104mm x 157mm) Two-way Car Speaker Power Handling: 60Wrms, 180W peak
 - Sensitivity (@ 2.83V): 93dB
 - Frequency Response: 75Hz – 40kHz
 - Impedance: 3.0 ohms
 - Gross weight: 1.686kg

- KAPPA 53XF
 - 5-1/4" (133mm) Two-Way Car Speaker
 - Power Handling: 60Wrms, 180W peak
 - Sensitivity (@ 2.83V): 93dB
 - Frequency Response: 55Hz – 40kHz
 - Impedance: 3.0 ohms
 - Gross weight: 2.23kg
- KAPPA 503CF
 - 5-1/4" (133mm) Two-Way Component Speaker System Power Handling: 80Wrms, 240W peak
 - Sensitivity (@ 2.83V): 93dB
 - Frequency Response: 55Hz – 40kHz
 - Impedance: 3.0 ohms
 - Gross weight: 2.52kg
- KAPPA 203S
 - 2" (50mm) Silk Dome Midrange with
 - Bandpass Crossover Enclosure
 - Power Handling: 50Wrms, 150W peak
 - Sensitivity (@ 2.83V): 94dB
 - Frequency Response: 500Hz – 7kHz
 - Impedance: 3.0 ohms
 - Gross weight: 0.82kg
- KAPPA 303S
 - 3" (89mm) Midrange with Bandpass Crossover Enclosure Power Handling: 55Wrms, 165W peak
 - Sensitivity (@ 2.83V): 93dB
 - Frequency Response: 200Hz – 15kHz
 - Impedance: 3.0 ohms
 - Gross weight: 0.78kg
- KAPPA 753T
 - 3/4" (19mm) Edge-Driven Silk Dome Tweeter
 - Power Handling: 50Wrms, 150W peak
 - Sensitivity (@ 2.83V): 93dB
 - Frequency Response: 2kHz – 40kHz
 - Impedance: 3.0 ohms
 - Gross weight: 0.306kg

HARMAN International Industries, Incorporated 8500 Balboa Boulevard, Northridge, CA 91329 USA

www.infinityspeakers.com

© 2020 HARMAN International Industries, Incorporated. All rights reserved. Infinity is a trademark of HARMAN International Industries, Incorporated, registered in the United States and/or other countries. Features, specifications and appearance are subject to change without notice.

Documents / Resources

 The image shows the cover of the 'Infinity KAPPA603CF Installation Manual'. It features the Infinity logo at the top left, followed by the text 'INSTALLATION MANUAL' and 'KAPPA603CF'. There are three small images: a circular speaker, a tweeter, and a subwoofer.	<p>HARMAN KAPPA603CF Kappa Series Component Speaker System [pdf] Instruction Manual</p> <p>KAPPA603CF, Kappa Series Component Speaker System, KAPPA603CF Kappa Series Component Speaker System, Component Speaker System, Speaker System</p>
--	--

References

-  [Infinity US](#)