



# HARMAN KAPPA component speaker system Installation Guide

[Home](#) » [Harman](#) » HARMAN KAPPA component speaker system Installation Guide 

## Contents

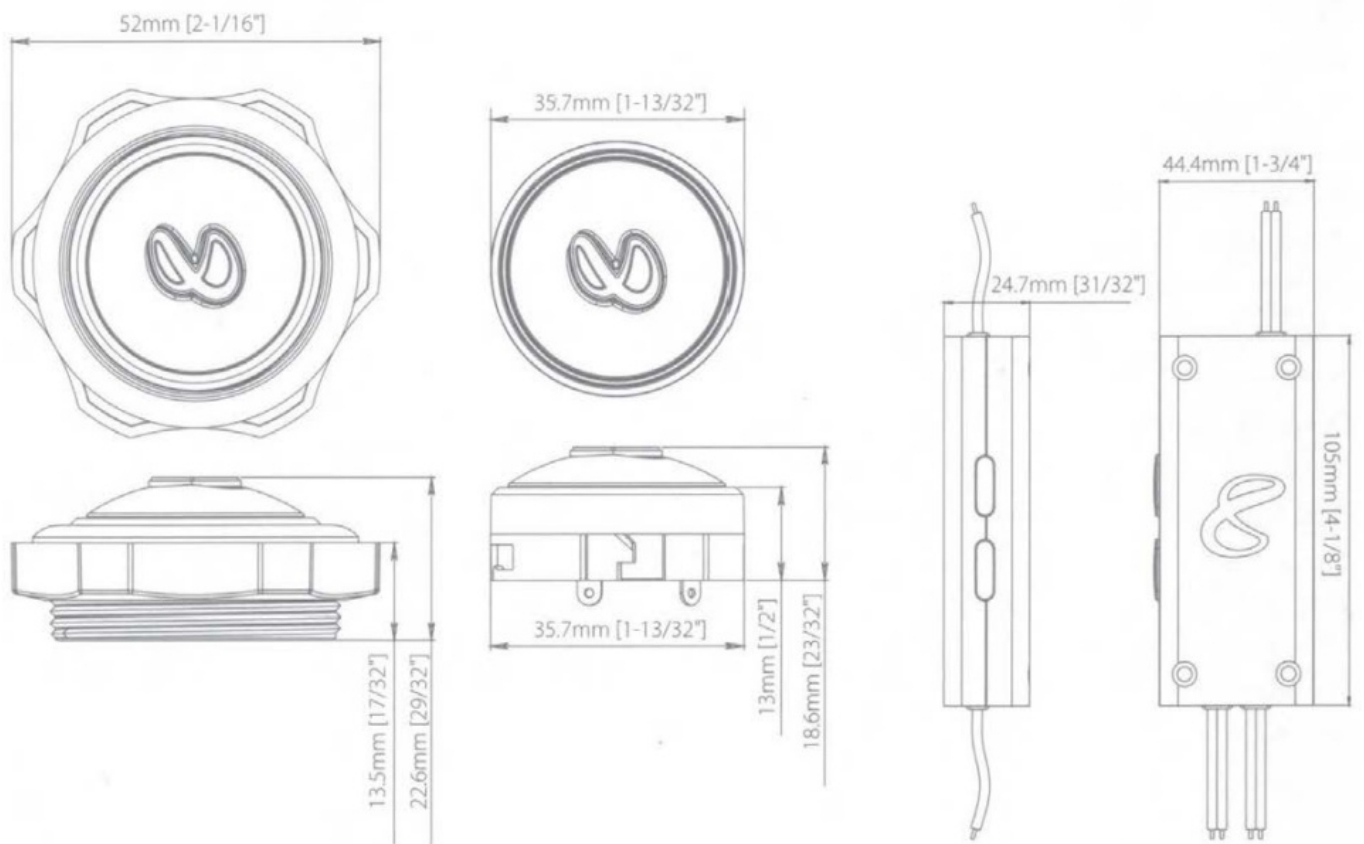
- [1 HARMAN KAPPA component speaker system](#)
- [2 Dimensions](#)
- [3 WHAT'S IN THE BOX](#)
- [4 INSTALLATIONKappa Car Speakers Make Your Drive Come Alive.](#)
- [5 Features](#)
- [6 Features and Benefits](#)
- [7 Documents / Resources](#)
  - [7.1 References](#)
- [8 Related Posts](#)

**HARMAN**

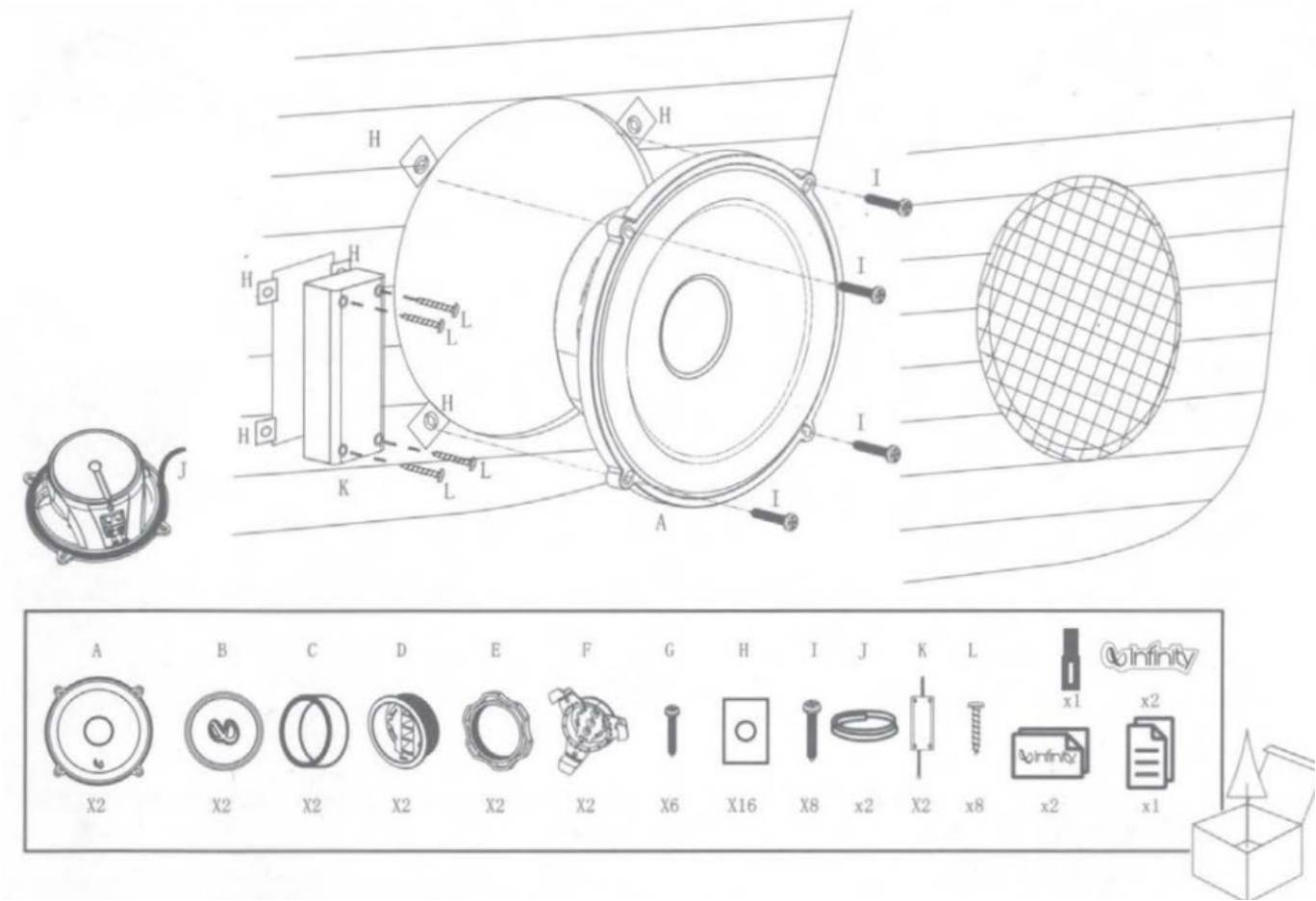
## HARMAN KAPPA component speaker system



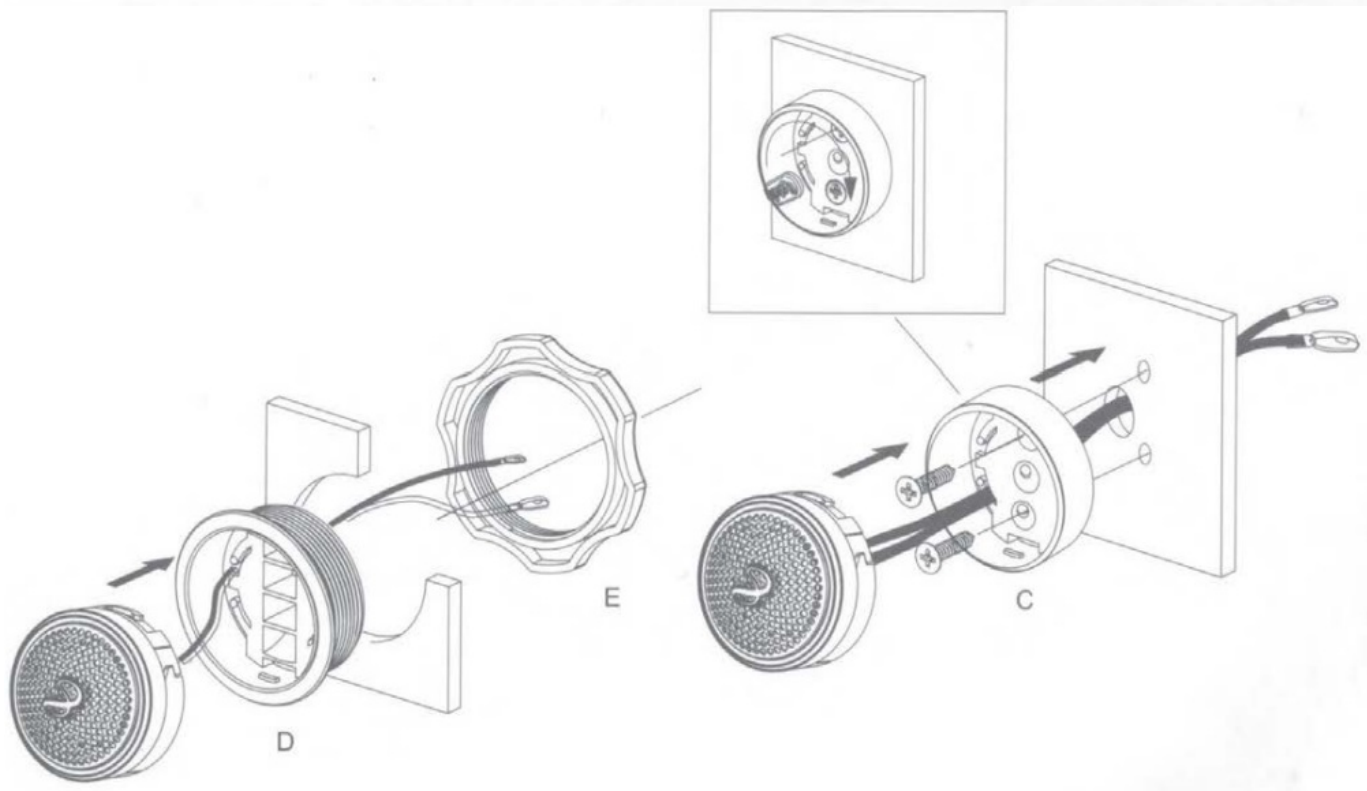
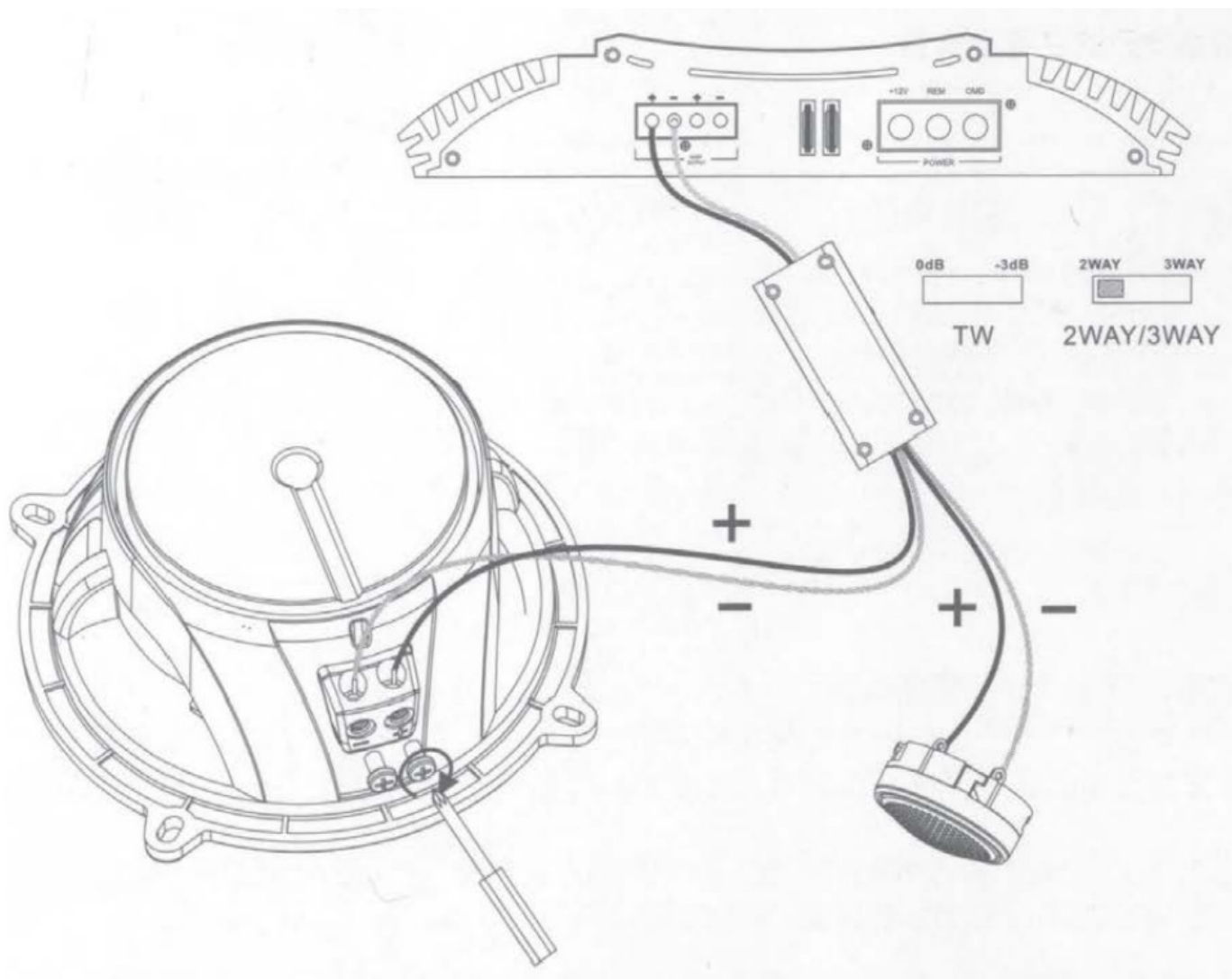
### Dimensions

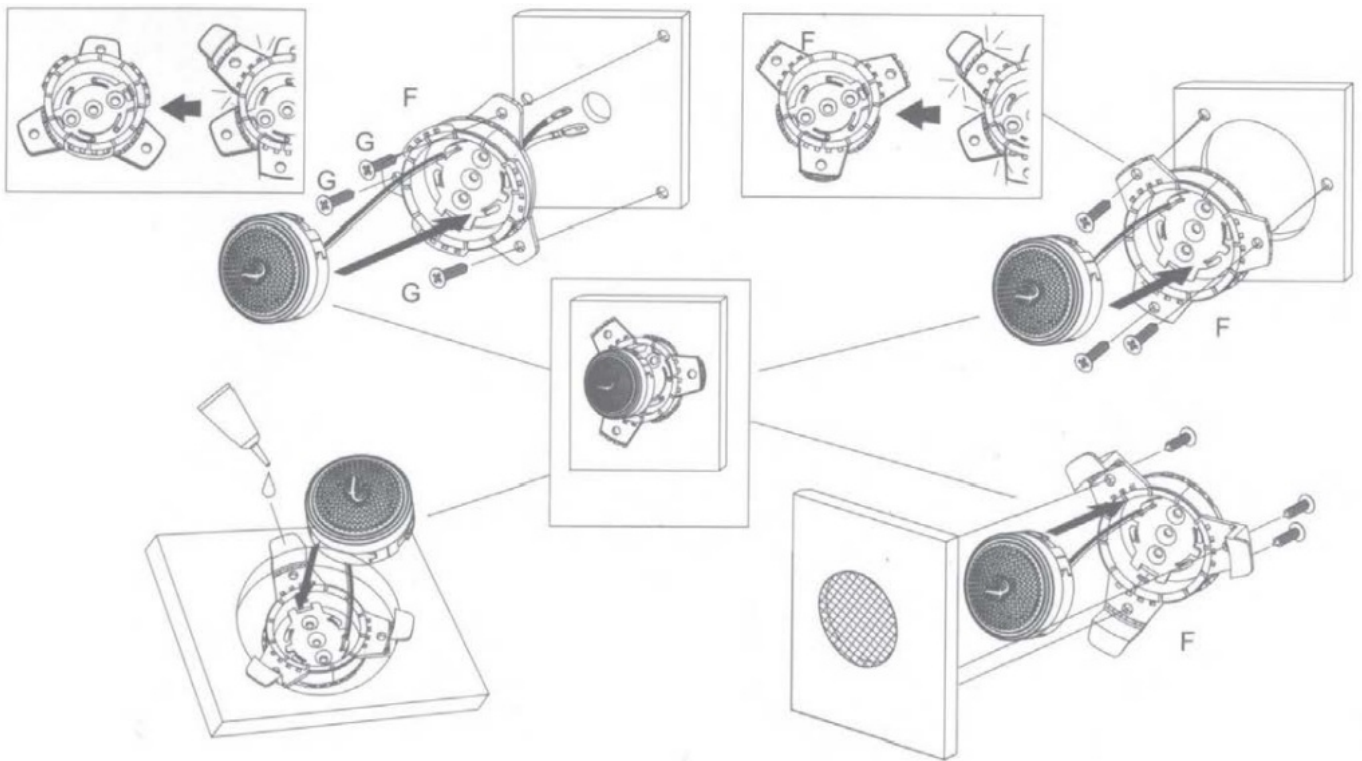


WHAT'S IN THE BOX



INSTALLATION





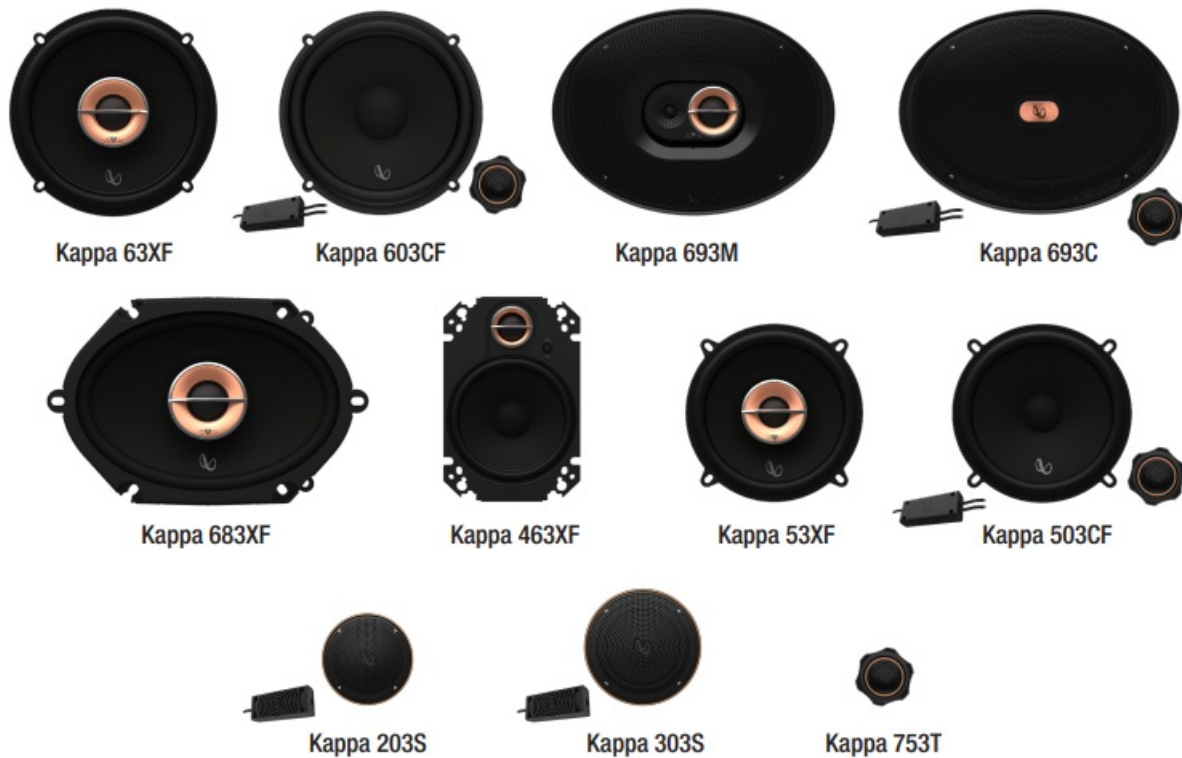
## Kappa Car Speakers Make Your Drive Come Alive.

Infinity Kappa Series speakers, available in all standard sizes, are designed to bring a new standard of excellence in-car audio to virtually any vehicle. Kappa's Plus One fiberglass woofers deliver high-output, deep and robust bass. The high-resolution 3/4" edge-driven textile dome tweeters deliver soaring highs up to 40kHz. 2" and 3" midranges are available to upgrade two-way component systems into a three-way. The compact 3" midrange speakers also offer a perfect plug-and-play solution with low-frequency response to 300Hz and high sensitivity

## Features

- 40kHz High-resolution Silk Dome Tweeter
- Patented Plus One Glass Fiber Woofers
- OdB or-3dB Tweeter Output Level Control
- UniPivot and Angled Tweeter
- 3-way Upgradability
- Super Compact Design and High Sensitivity 3" Midrange Speaker
- Sleek and Powerful Industry Design
- Slim and Smart Crossover Design

## Features and Benefits



### 40kHz High-resolution Silk Dome Tweeter

Kappa edge-driven silk dome tweeters equipped with oversized voice coils deliver silky smooth highs with impressive thermal power handling and 40kHz high resolution.

### Patented Plus One Glass Fiber Woofers

Infinity's glass timber Woofer cones are lighter and stiffer with more cone area than the competition, delivering increased low-frequency output and higher efficiency. Hearing is believing

### 0dB or -3dB Tweeter Output Level Control

The push-button on the angled tweeter allows tweeter output level control of 0dB or -3dB to optimize system linearity based on installation location.

### UniPivot and Angled Tweeter

For 5-1/4", 6-1/2", and 6" x 8" coaxial models, the tweeters are angled and can be rotated 270° after installation on most models. This gives you imaging options and the ability to elevate the soundstage on low-mounted speakers.

### 3-Way Upgradability

Kappa 2-way component system crossovers are compact and equipped with 2-way and 3-way selections to accommodate a 2 or 3" midrange upgrade. The optional 2 or 3" midrange includes a bandpass crossover to upgrade a two-way system into a three-way system with perfect tonal balance

### Super Compact Design and High Sensitivity 3" Midrange Speaker

Kappa 3" midrange delivers low-frequency response to 300Hz while keeping high sensitivity over 89dB. The super compact design and premium performance allow the midrange to fit more vehicles without sacrificing any of your audio experience.


### Sleek and Powerful Industry Design

The essence of form and function, Kappa tweeters are elegantly designed to deliver a car audio experience as powerful as it is beautiful.

### Slim and Smart Crossover Design

Kappa component systems all have very slim crossovers, which are equipped with connection cables for easy installation. The push-button on the crossover allows tweeter output level control or USB or -3dB to optimize system linearity based on installation location.

## Documents / Resources

	<p><a href="#">HARMAN KAPPA component speaker system</a> [pdf] Installation Guide KAPPA component speaker system, component speaker system, speaker system, 503CF</p>
---	---

## References

-  [Infinity US](#)

[Manuals+](#).