

Happybuy Multi Function Shower Panel



Happybuy Multi Function Shower Panel Instructions

[Home](#) » [Happybuy](#) » Happybuy Multi Function Shower Panel Instructions 

Contents

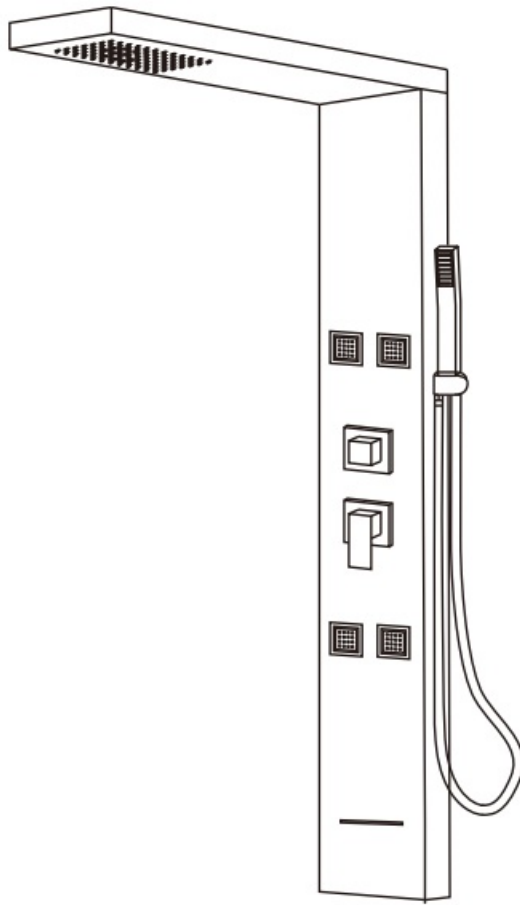
- [1 Happybuy Multi Function Shower Panel](#)
- [2 TO GET STARTED](#)
- [3 TECHNICAL DATA](#)
- [4 RECOMMENDED TOOLS FOR INSTALLATION](#)
- [5 PARTS LIST](#)
- [6 INSTALLATION](#)
- [7 CARE AND MAINTENANCE](#)
- [8 MORE DESIGN](#)
- [9 Documents / Resources](#)
 - [9.1 References](#)
- [10 Related Posts](#)

Happybuy

Happybuy Multi Function Shower Panel



TO GET STARTED



- Before you begin, read all instructions carefully. This manual is a graphic reference for installation purposes. Some graphic elements and components may differ.
- Inspect the unit carefully to ensure there is no damage or defects. If such is the case, please contact us freely.
- Make sure you have received all parts (tools not included).
- Consult local building codes to ensure that installation complies with standards in your area.

WE STRONGLY SUGGEST YOU LET A SPECIALIST PROCEED WITH THE INSTALLATION

TECHNICAL DATA

- **Operating pressure:** Max.1 MPa
- **Recommended operating pressure:** 0.22-0.5MPa
- **Test pressure:** 1.5MPa (1MPa=10bar=147 PSI)
- **Hot water temperature:** Max.176°F
- **Recommended hot water temperature:** 149°F
- **Connections (cold right-hot left):** G1/2

RECOMMENDED TOOLS FOR INSTALLATION



Screwdriver



Hammer



Pencil



Level



Drill Bit 6mm

Electric Drill



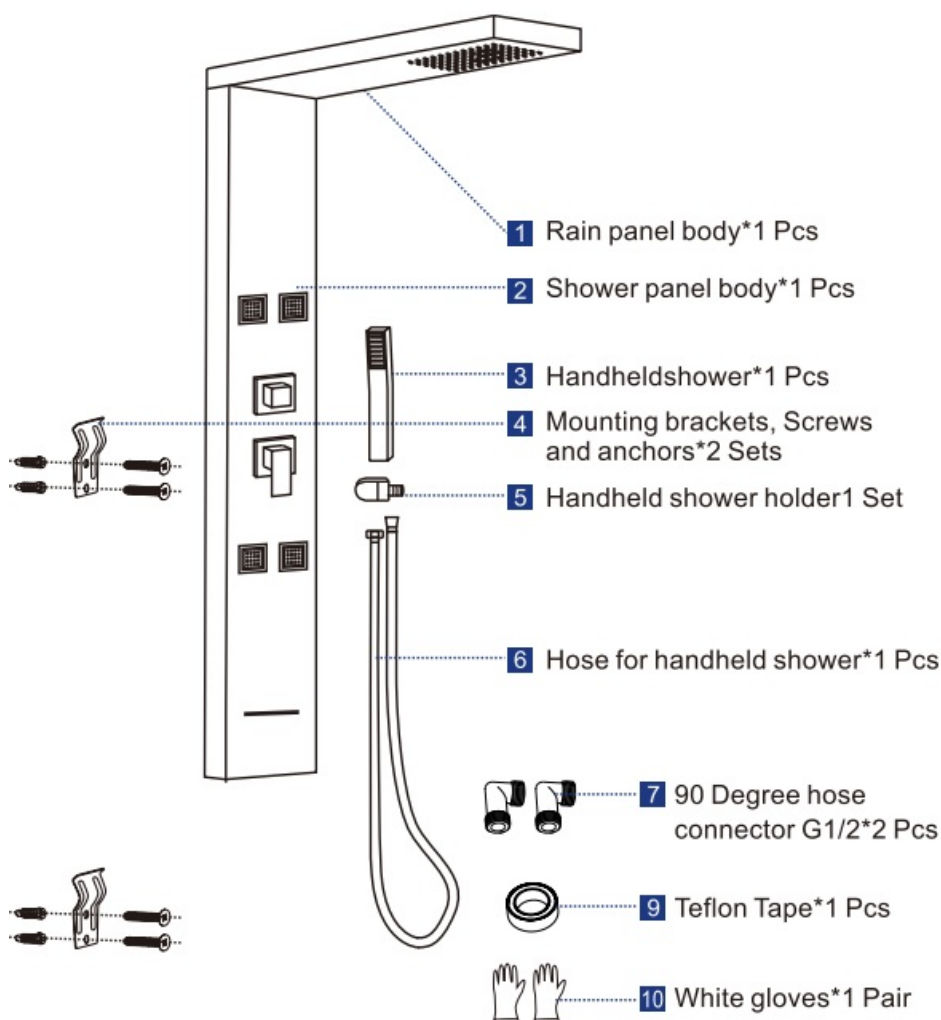
Wrenches



Sealing Tape

PARTS LIST

•



A Gasket*2 Pcs

• B Screws*4 Pcs

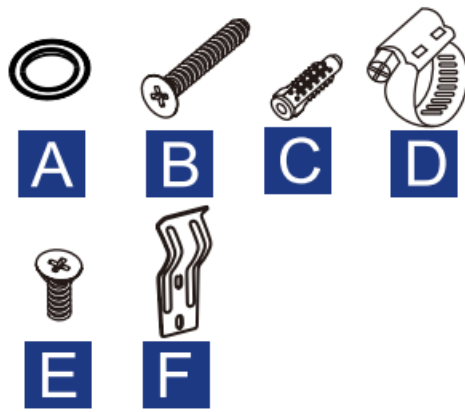
• C Screwanchor*4 Pcs

• D Hose clamp* 2 Pcs

• E Screws*5 Pcs

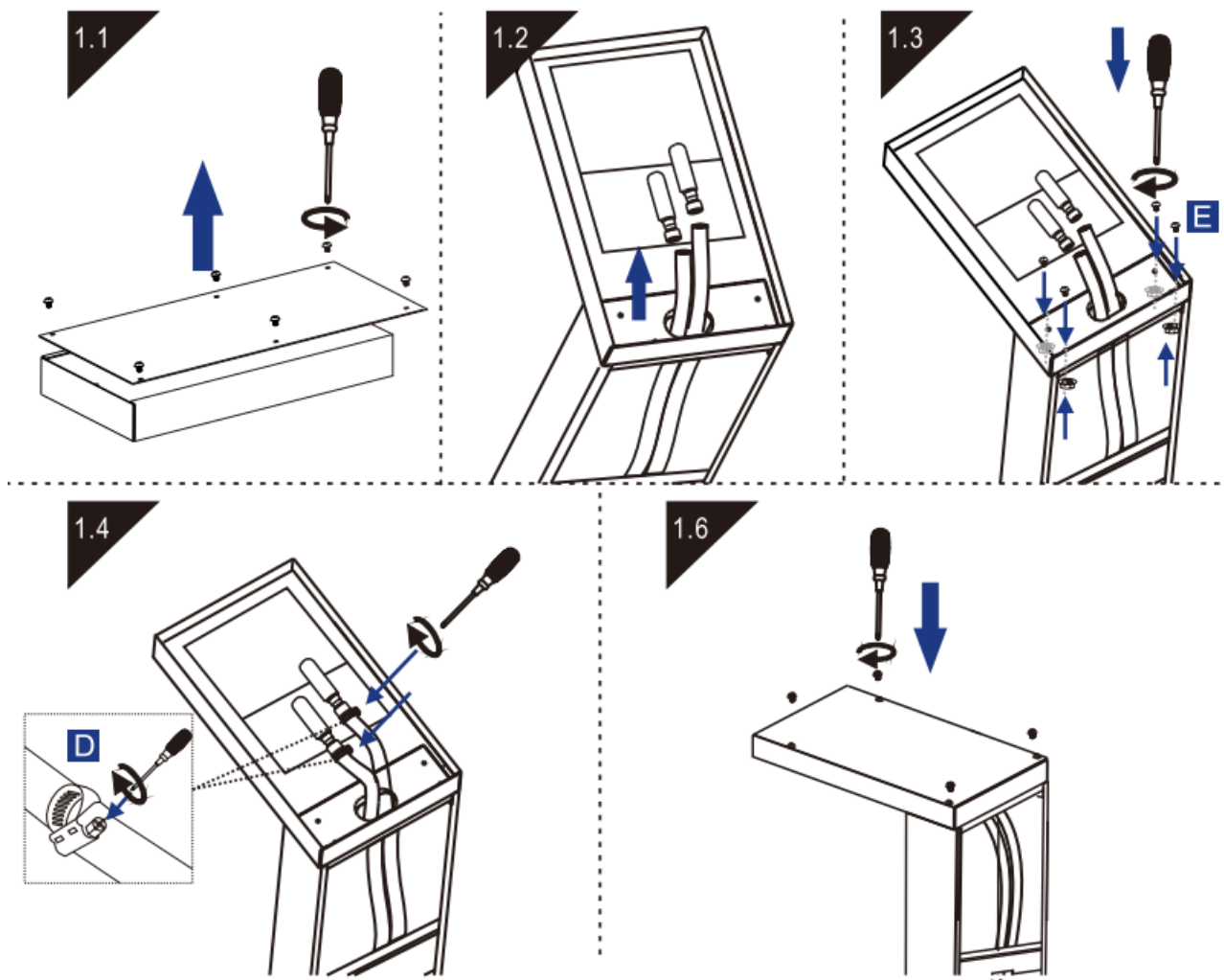
(Rain panel & Shower panel screws)

• F Mounting brackets*2 Pcs

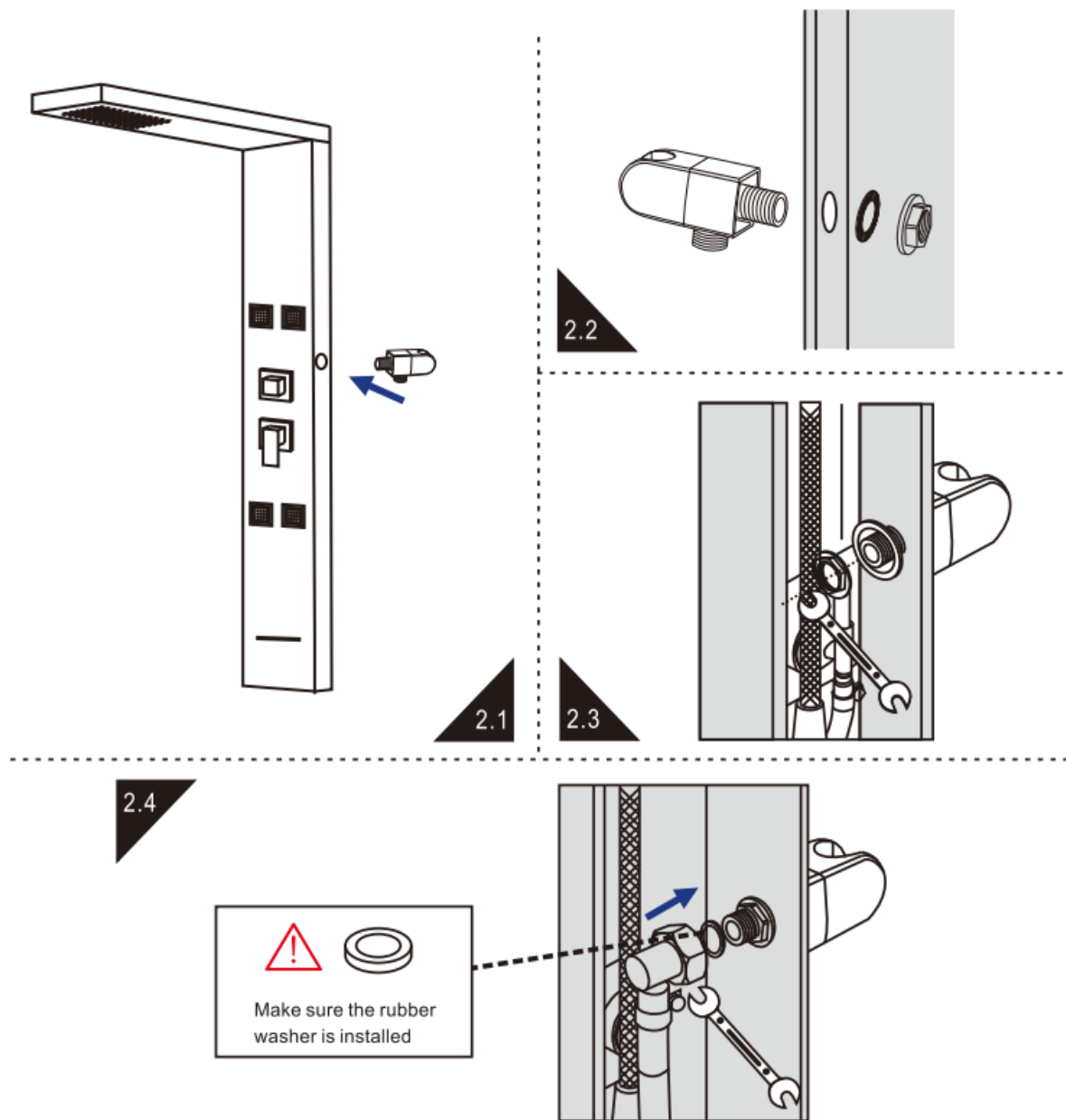


INSTALLATION

1. **STEP1:** Rain shower and Body shower panel connect



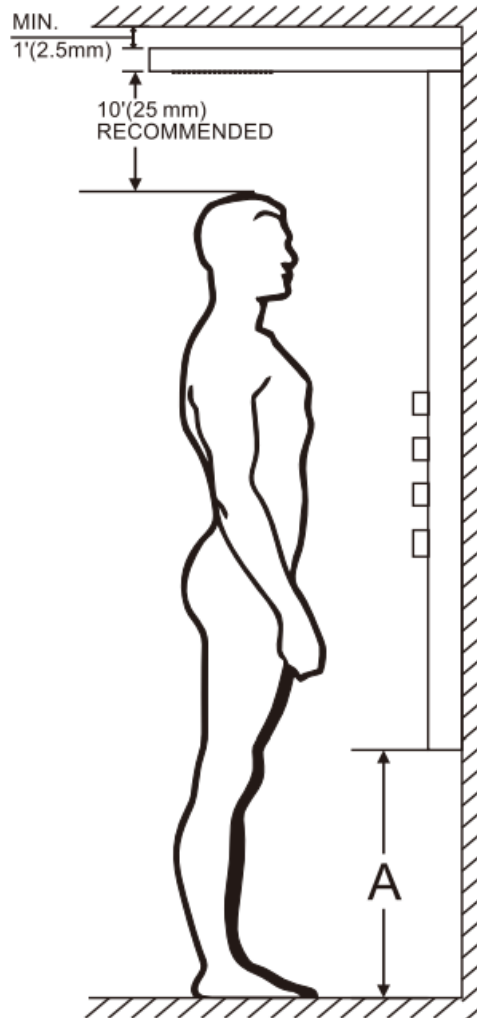
2. **STEP 2:** Hand-held shower holder installation.



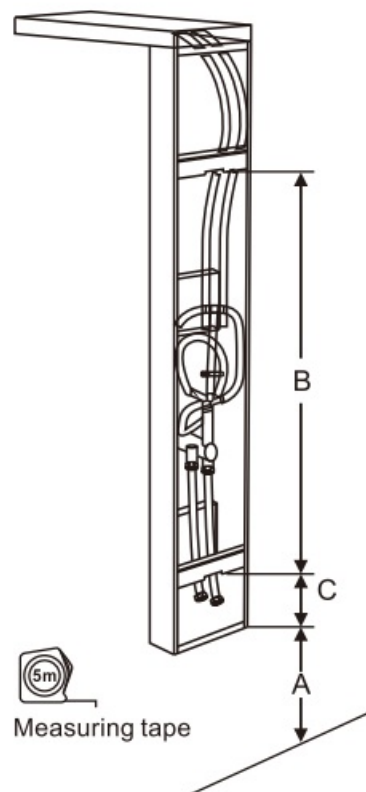
3. **STEP3:** Measurement

- Adjust the plumbing to ensure that there is adequate space for the shower to be installed.
- Establish the precise height and position of the unit on the wall.
- We recommend leaving a 10"(25 cm) space between the shower head and the average height of the people in the house as well as a minimum distance of 1"(2.5 cm) from the ceiling.

3.1



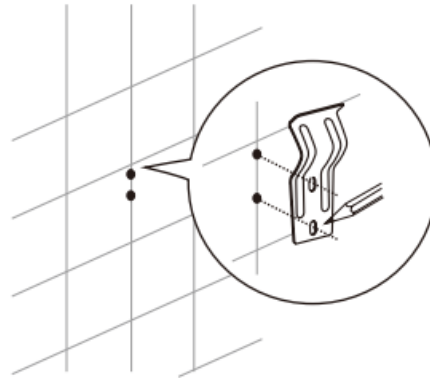
3.2



3.3



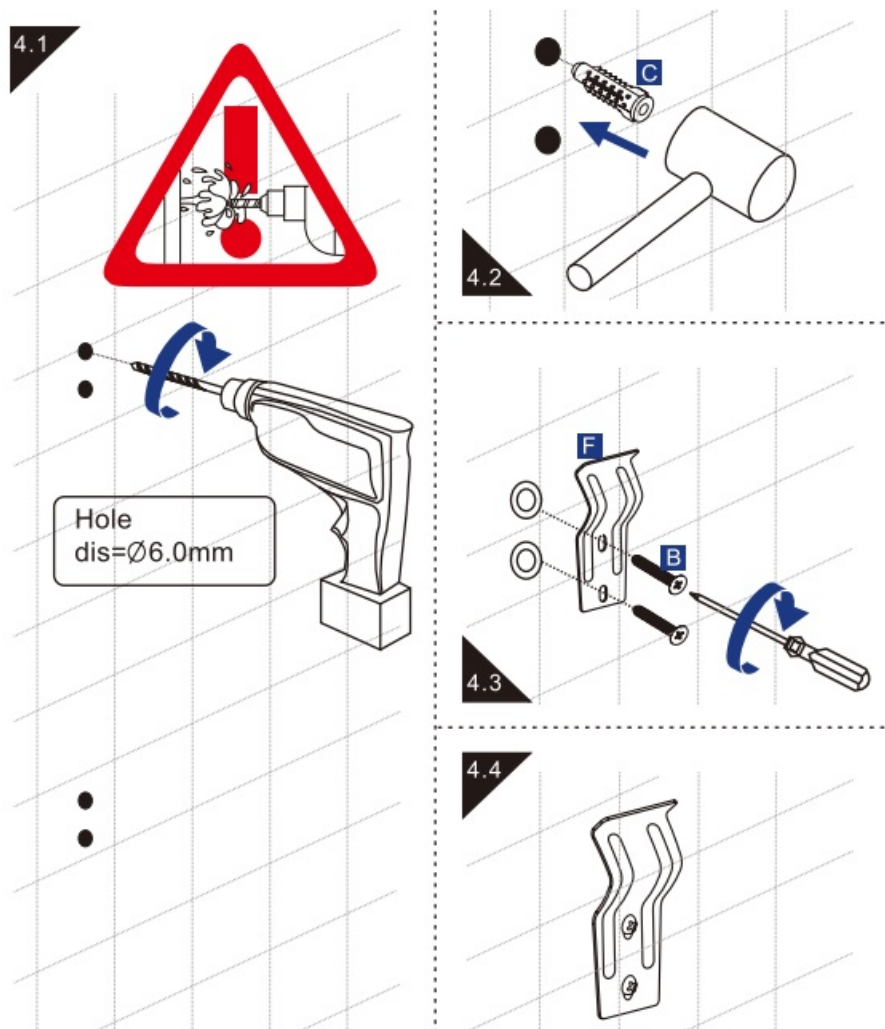
3.4



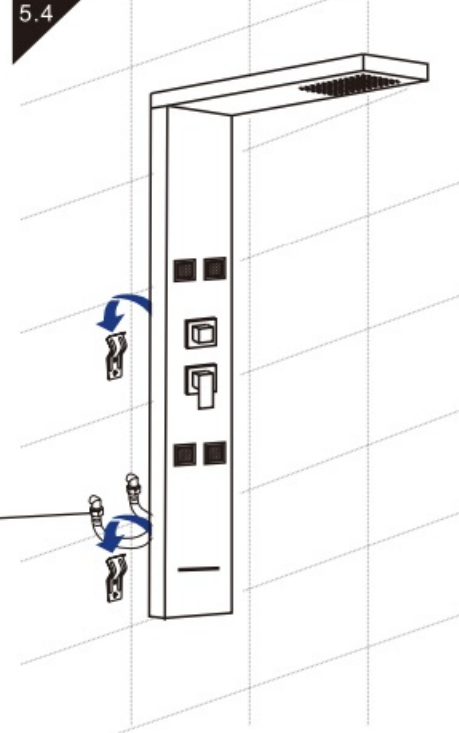
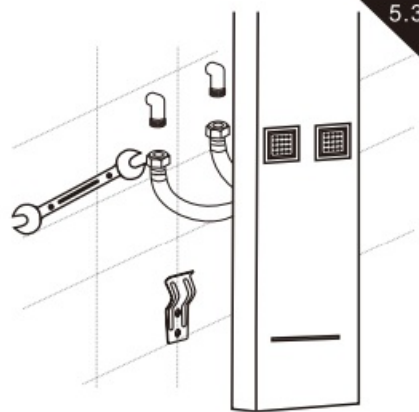
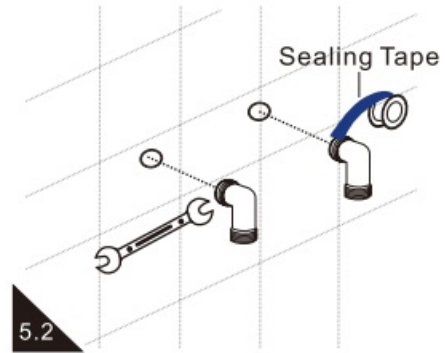
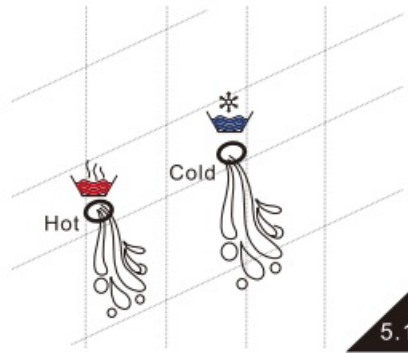
- Measure the total height A from the floor to the bottom of the shower panel,
- Measure the distance C between the lower bracket and the bottom of the shower panel,
- Measure the distance B between the 2 brackets, III Project this measurement onto the wall to install the mounting brackets.

Mark the position of each screw hole of both mounting brackets on the wall using a pencil.

4. **STEP4:** Mounting Brackets Installation

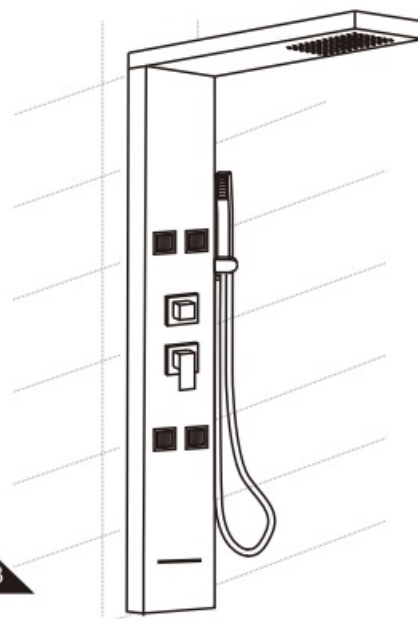
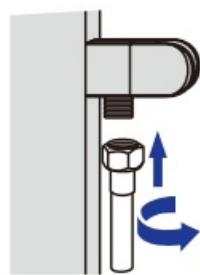


5. **STEP5:** Water supply checking and supply hoses connection



6. **STEP6:** Hand shower connection

7.



8. **STEP7:** Test

- No water leakage at any connection;
- All shower modes work well.

CARE AND MAINTENANCE

- Wipe with a soft towel after each use. Use mild dishwashing detergent to keep surfaces bright and clean. Rinse well and dry with a clean cloth.
- Powdered detergents and abrasive liquid cleaners may damage surfaces.
- Do not allow the surface to come into contact with corrosive products such as acetone, nail polish remover, dry cleaning solution, lacquer, paint thinner, gasoline, or etc.
- Any cleaning product should be tested on an inconspicuous surface before using to clean.

MORE DESIGN

- The shower panel designs are different, the instructions just for reference for the installation and usage.
 - The Specific operations are subject to the actual shower panel.
-

Documents / Resources



[Happybuy Multi Function Shower Panel](#) [pdf] Instructions
Multi Function Shower Panel, Multi, Function Shower Panel, Shower Panel, Panel

References

- [User Manual](#)

[Manuals+](#), [Privacy Policy](#)

This website is an independent publication and is neither affiliated with nor endorsed by any of the trademark owners. The "Bluetooth®" word mark and logos are registered trademarks owned by Bluetooth SIG, Inc. The "Wi-Fi®" word mark and logos are registered trademarks owned by the Wi-Fi Alliance. Any use of these marks on this website does not imply any affiliation with or endorsement.