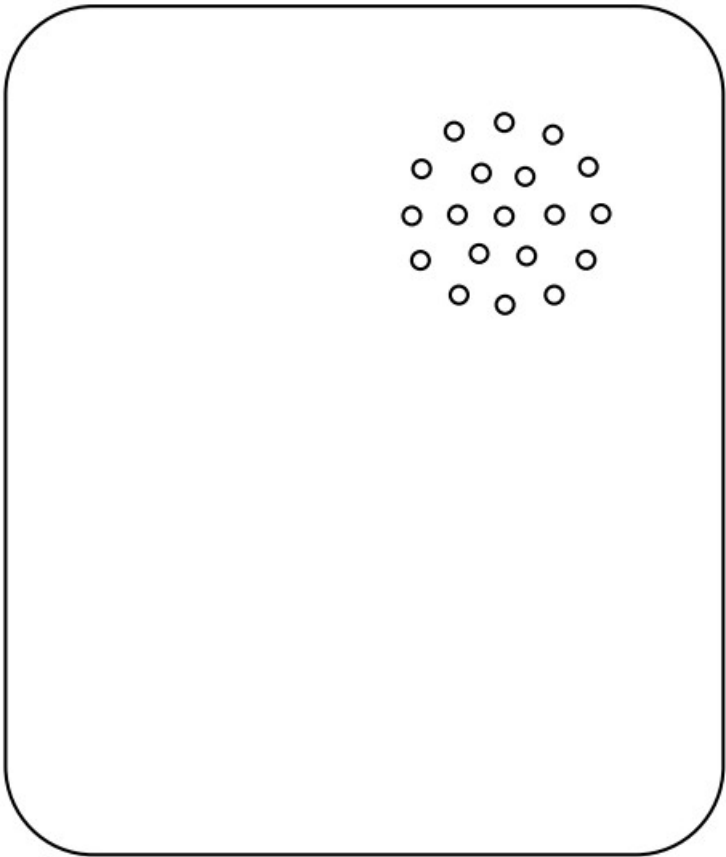




# HAOLIYUAN SWV04 Vibration Sensor Installation Guide

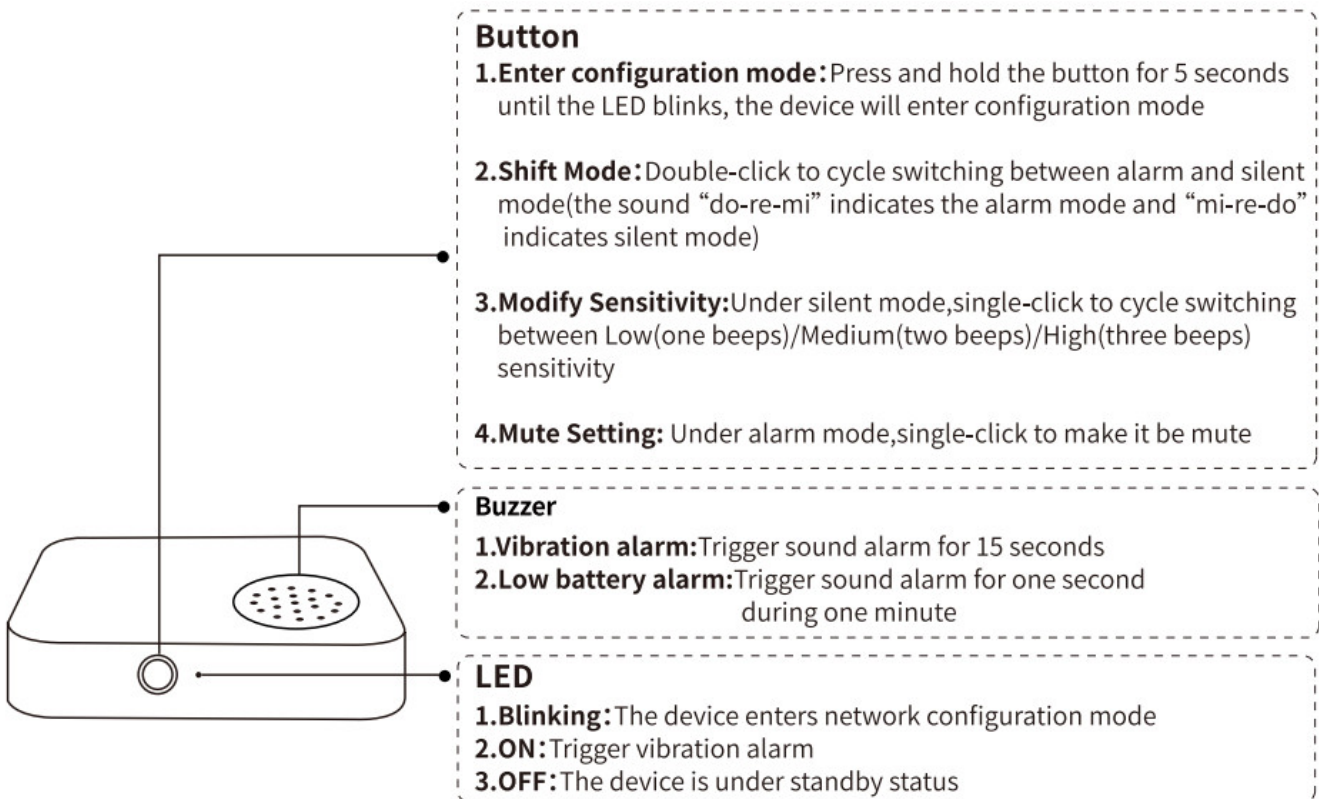
[Home](#) » [HAOLIYUAN](#) » HAOLIYUAN SWV04 Vibration Sensor Installation Guide 



## Contents

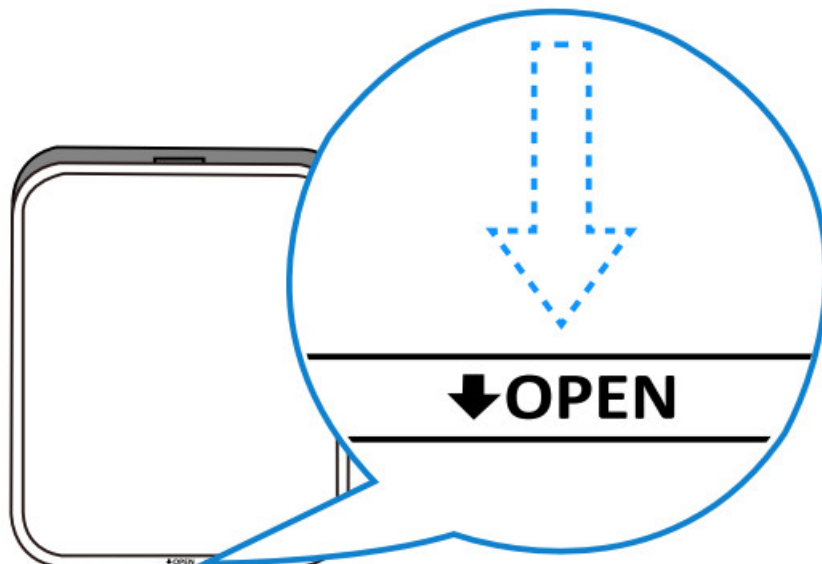
- [1 SWV04 Vibration Sensor](#)
- [2 Quick Installation Guide](#)
- [3 FCC Warning](#)
- [4 Documents / Resources](#)
- [5 Related Posts](#)

## SWV04 Vibration Sensor

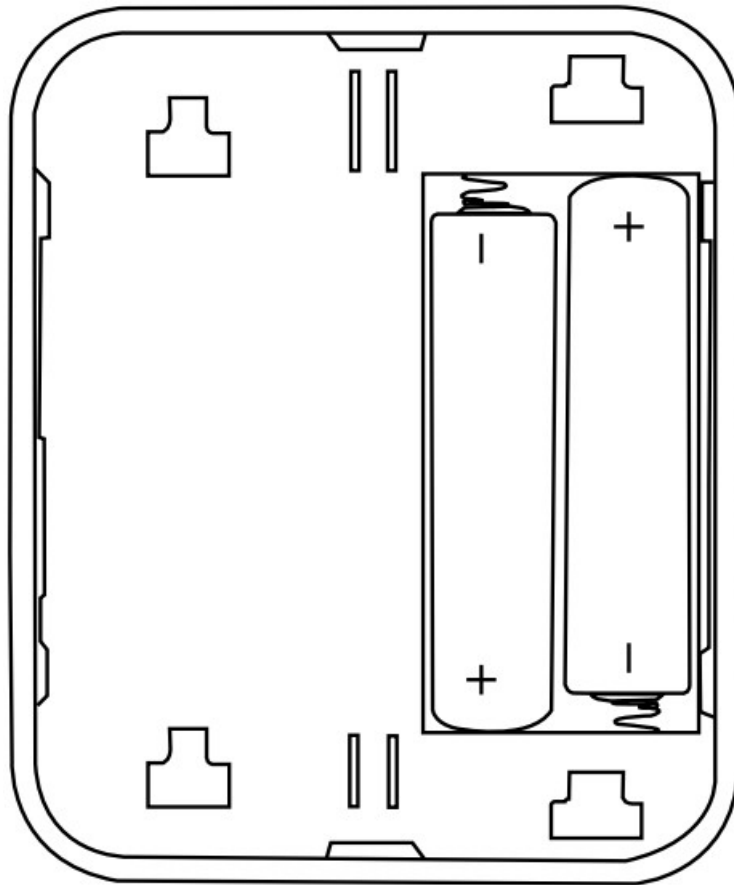


1. Open the battery cover and insert the battery into the battery compartment(please note Battery positive and negative) ,then close the battery cover.

### 1. Open the cover

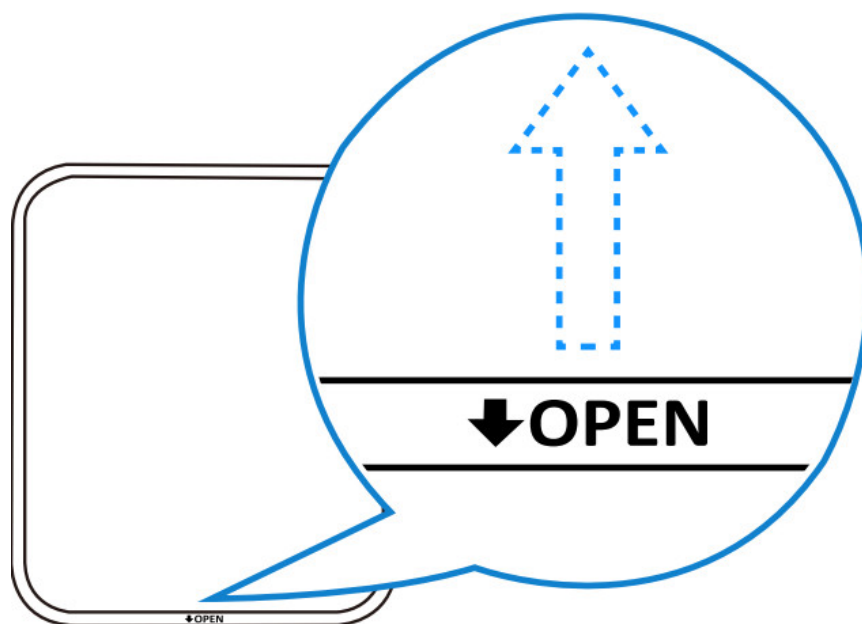


### 2. Put in new batteries



3. Close the cover

Close



### Quick Installation Guide

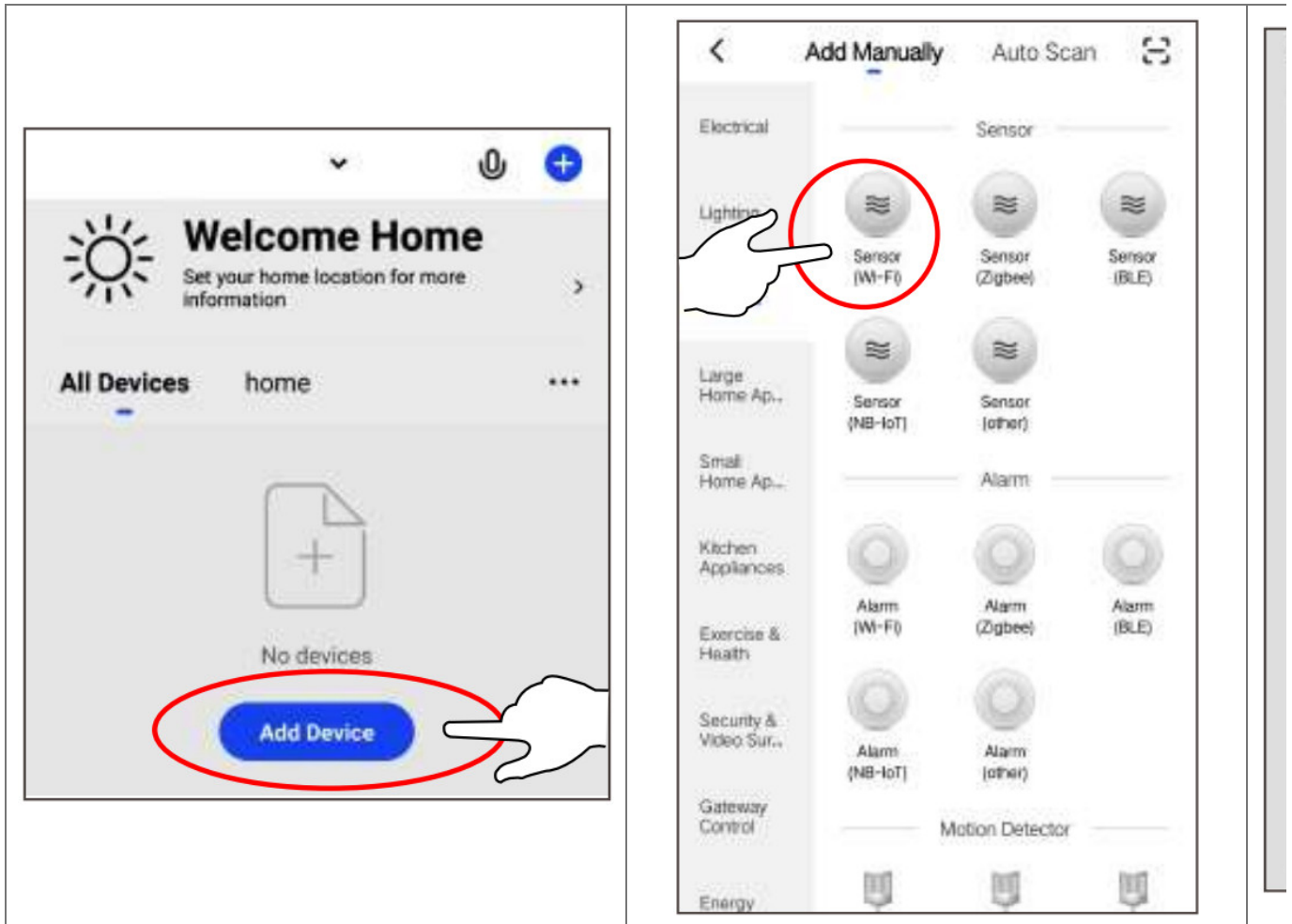
2. Scan below QR code or search Smart Life from APP Store or Google Play and install the app, new user must register a account first.



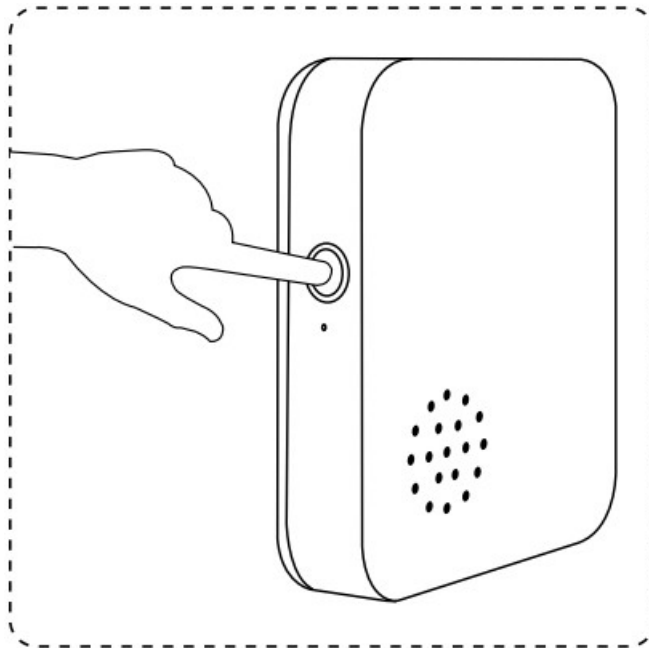
<https://smartapp.tuya.com/smartlife>

3. Connect mobile device to your 2.4GHz Wi-Fi router (with internet) then run Smart Life a pp Add Device (select Sensor->Sensor(Wi-Fi)).

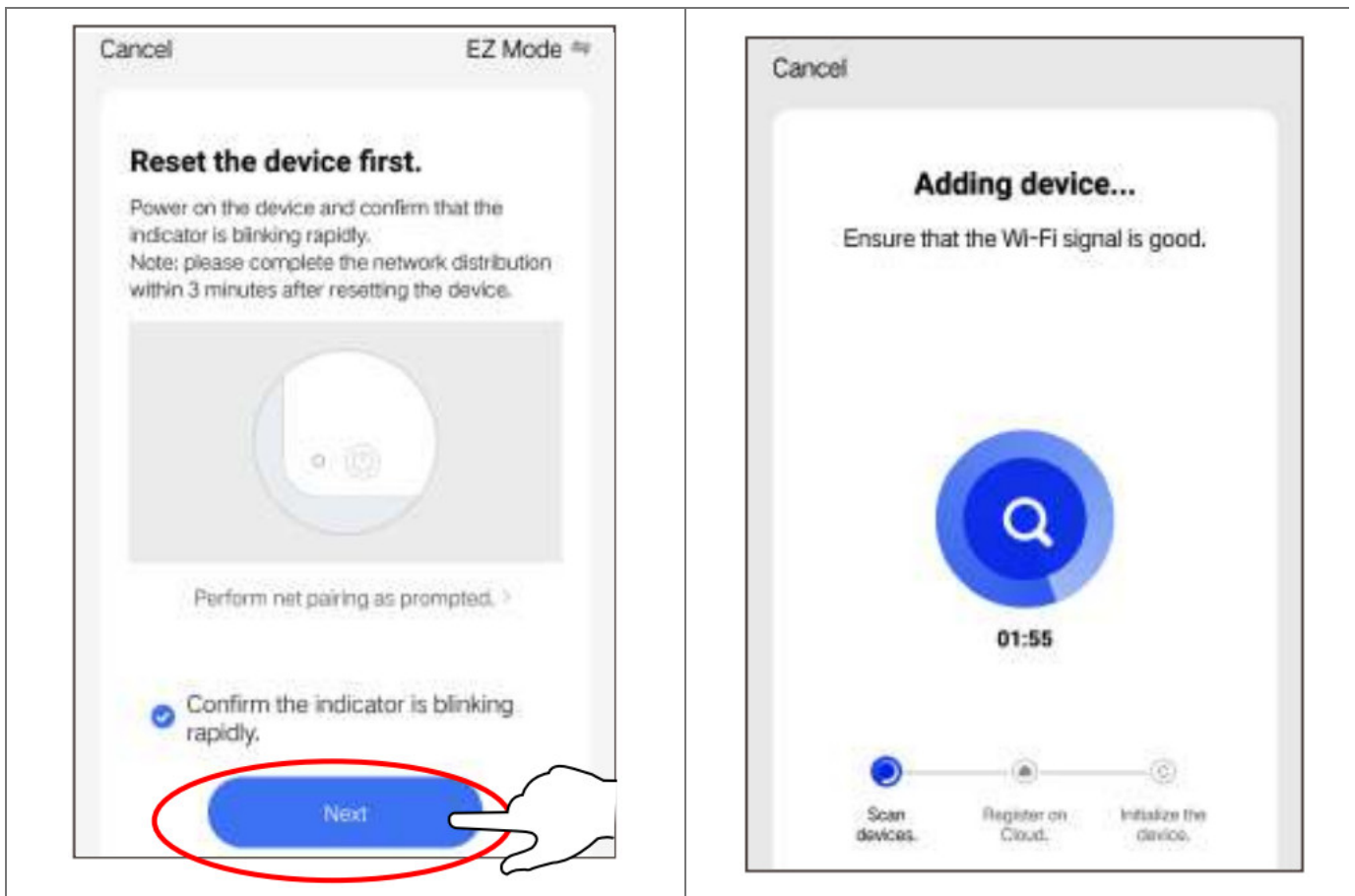
**Note:** the device only support connect to 2.4G WiFi router.



4. Press the reset button for 5 seconds, till the LED blink, then check "Confirm the indicator is blinking rapidly and follow the in-app instructions to connect the sensor to your network.

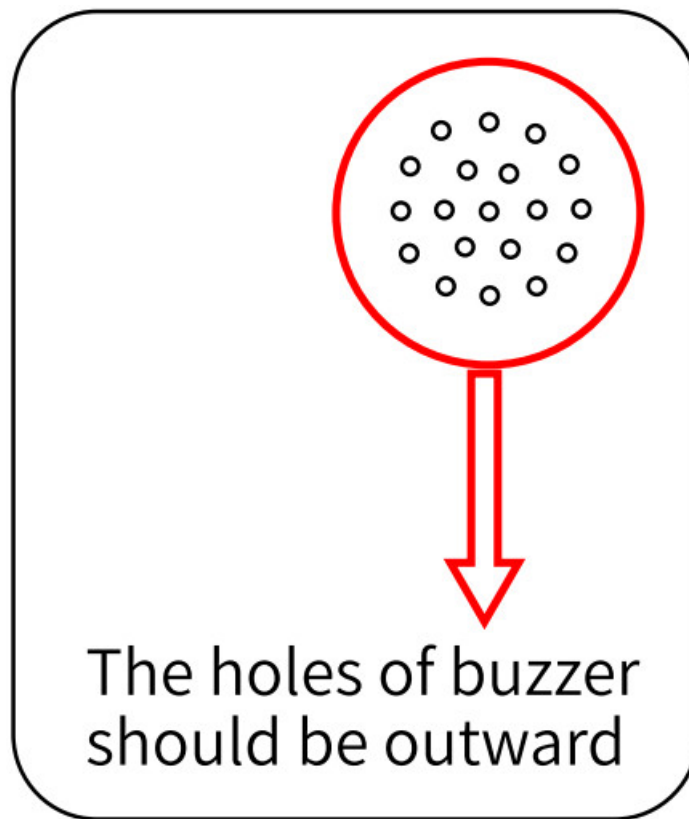


If the vibration appear, this device should trigger sound alarm and the Smart Life app should receive the vibration alarm at the same time.



Waiting for a few seconds, This device is added successfully and you may rename it. Click “Done” to finish the setting.

5. Put it where you need it .Please note that the side with buzzer must be no obstacle.



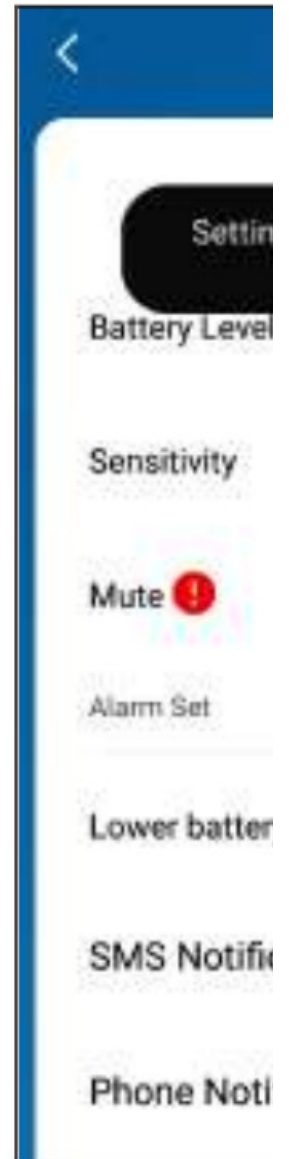
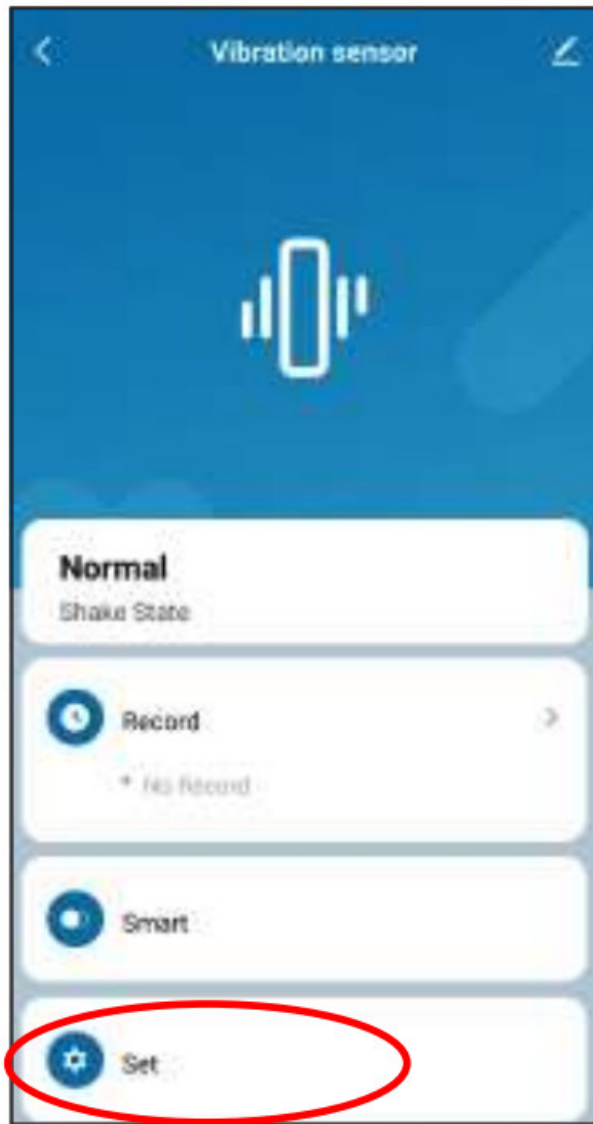
If the vibration appear,this device should trigger sound alarm and the Smart Life app should receive the vibration alarm at the same time.

#### 6. Setting with hardware

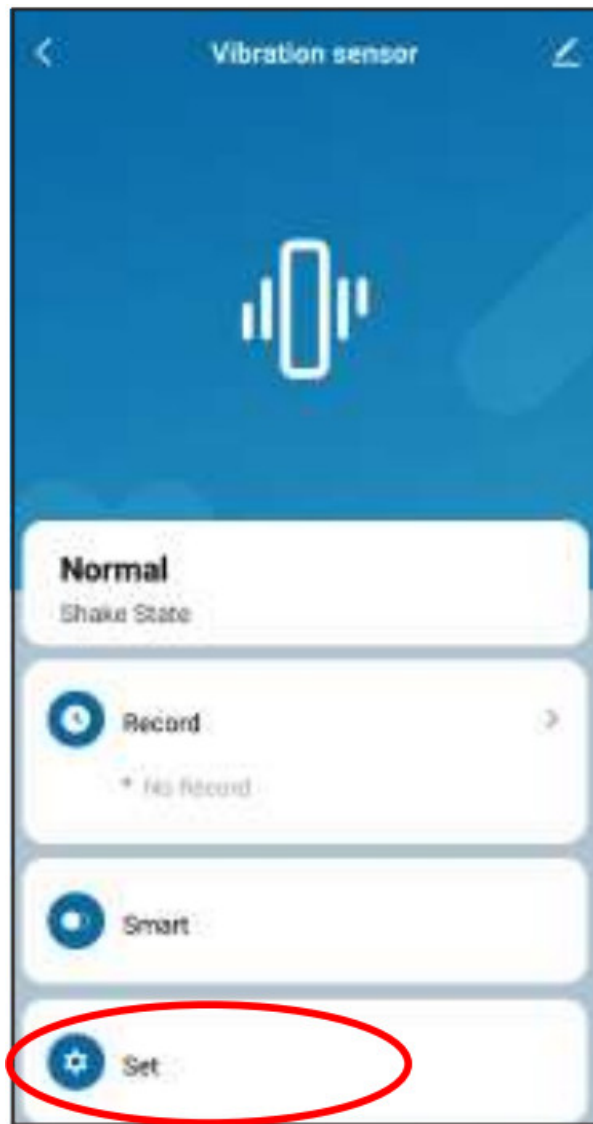
- 1). Double-click button to switch to alarm mode (make a sound with "do-re-mi")
- 2).f the vibration appear,this device should trigger sound alarm for 15 seconds and the Smart Life app should receive the vibration alarm at the same time.
- 3).When it is triggering alarm, single-click button to make it be mute.
- 4). If you want to modify the vibration sensitivity, please double-click button to switch to silent mode(make a sound with "mi-re-do") first,then single-click button to cycle switching between Low(one beeps)/Medium(two beeps)/High (three beeps) sensitivity.

#### 7. Setting with Smart Life

- 1). Set->Mute:When it is triggering alarm,switch it to be mute.



2). Set->Sensitivity:Set the sensitivity to Low/middle/high level.please note that it must be triggered vibration manually to take setting effect.



## FCC Warning

This device complies with part 15 of the FCC rules. Operation is subject to the following two conditions:

1. This device may not cause harmful interference, and
2. This device must accept any interference received, including interference that may cause undesired operation.

Changes or modifications not expressly approved by the party responsible for compliance could void the user's authority to operate the equipment.

**NOTE:** This equipment has been tested and found to comply with the limits for a Class B digital device, pursuant to part 15 of the FCC Rules. These limits are designed to provide reasonable protection against harmful interference in a residential installation. This equipment generates uses and can radiate radio frequency energy and, if not installed and used in accordance with the instructions, may cause harmful interference to radio communications. However, there is no guarantee that interference will not occur in a particular installation. If this equipment does cause harmful interference to radio or television reception, which can be determined by turning the equipment off and on, the user is encouraged to try to correct the interference by one or more of the following measures:

- Reorient or relocate the receiving antenna.
- Increase the separation between the equipment and receiver.
- Connect the equipment into an outlet on a circuit different from that to which the receiver is connected.



- Consult the dealer or an experienced radio/TV technician for help.

### Radiation Exposure Statement

This equipment complies with FCC radiation exposure limits set forth for an uncontrolled environment. This equipment should be installed and operated with minimum distance 20cm between the radiator and your body.



### Documents / Resources



[HAOLIYUAN SWV04 Vibration Sensor](#) [pdf] Installation Guide  
SWV04, 2AUHL-SWV04, 2AUHLSWV04, SWV04 Vibration Sensor, Vibration Sensor, Sensor

[Manuals+](#)