



HAODENG ZJ-BWBL1H 800Lumens WiFi and Bluetooth and Remote 3-In-1 RGBCW WiFi LED Smart Bulb User Manual

[Home](#) » [HAODENG](#) » HAODENG ZJ-BWBL1H 800Lumens WiFi and Bluetooth and Remote 3-In-1 RGBCW WiFi LED Smart Bulb User Manual

Contents [[hide](#)]

- [1 HAODENG ZJ-BWBL1H 800Lumens WiFi and Bluetooth and Remote 3-In-1 RGBCW WiFi LED Smart Bulb](#)
- [2 Download the APP](#)
- [3 Install your smart light](#)
- [4 Connect your light](#)
- [5 Parameters](#)
- [6 Restore the factory setting](#)
- [7 FAQ](#)
- [8 Smart 2.4G remote controller](#)
- [9 How do I connect to Google Assistant?](#)
- [10 How do I connect to Alexa?](#)
- [11 Documents / Resources](#)
- [12 Related Posts](#)

HAODENG

HAODENG ZJ-BWBL1H 800Lumens WiFi and Bluetooth and Remote 3-In-1 RGBCW WiFi LED Smart Bulb



Download the APP

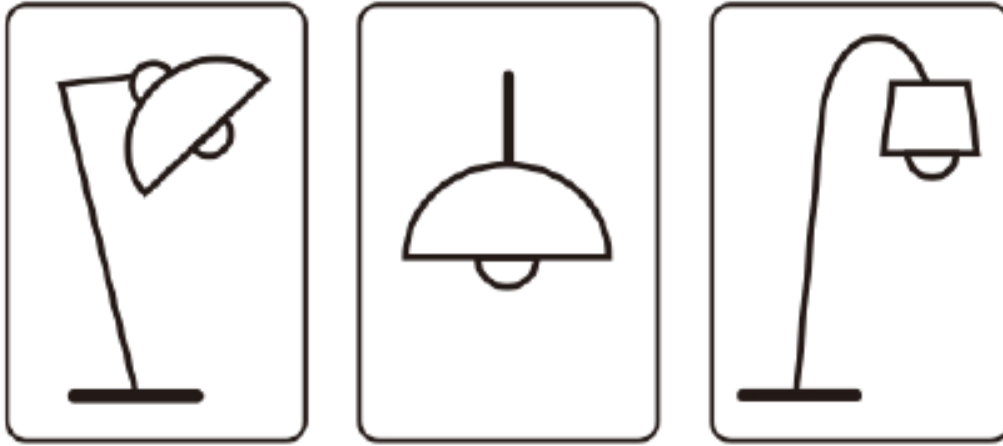
Scan the QR code below to download the “Magic Home Pro” APP in APP Store or Google Play.



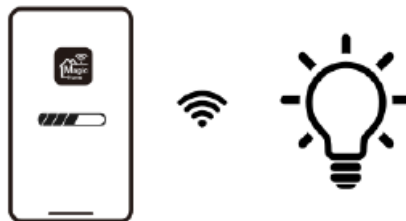
Magic Home Pro APP

Install your smart light

Remove the bulb from its packaging and screw it into your light fixture. Then, turn it on.



Connect your light



1. Turn on Bluetooth.
2. Run the newest App “Magic Home Pro” and Register Login your Magic Home account.
3. Click the “+” button on top right corner and choose the bulb to which you want to connect. (If can’t found, reset your bulb)
4. Connect the device to a Wi-Fi network. (Choose your router and login your password, ensure the router is 2.4GHZ)

Parameters

- 5 Channels: Power
- RGB+CCT: 7W/9W/10W
- Voltage AC 100-240V, 50/60HZ AC 100-130V, 50/60HZ IAC 190-240V, 50/60HZ
- Light Luminous Flux: 600LM/80OLM
- Color Temperature: 2700k-6500K
- Working Temperature -20-45°C
- Lamp Socket E26/E27/B22

Restore the factory setting

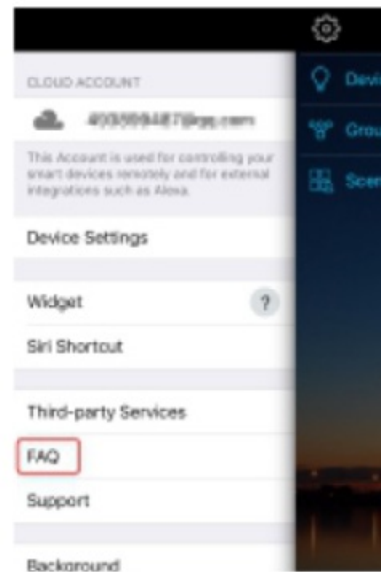
1. Power on the bulb.
2. Wait 35 seconds and then power off the bulb.
3. At the end of the 4th time when you turn on the bulb, it will emit strobe for a few seconds, after that it will become fully bright at which point the reset is complete. Once you have reset the bulb, you should be able to see its wifi IIP “LEDnet*****” again under your mobile device’s wifi settings. (If not, please restart your wifi, wait for a while and you will see it).

FAQ

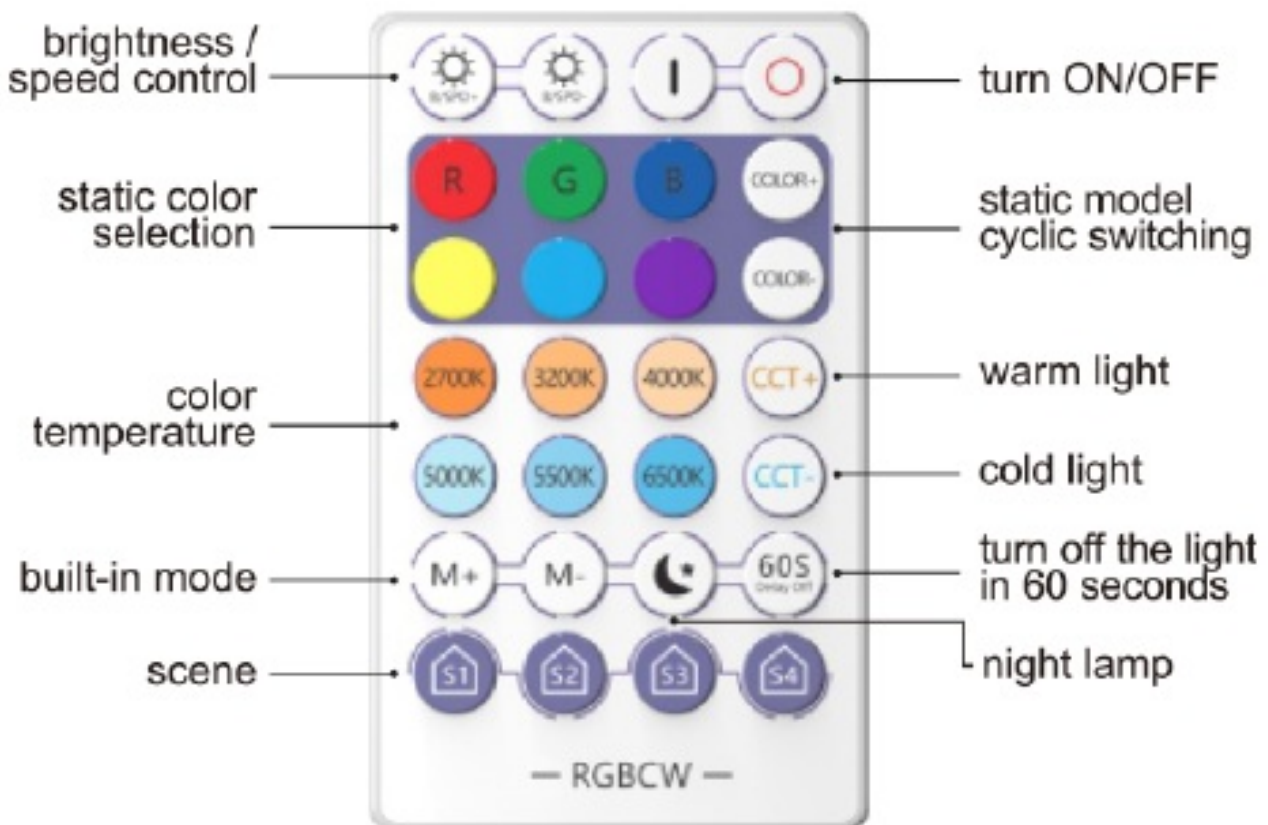
Scan the QR code below to read the electronic manual. Or open the APP's menu bar of the APP and click the FAQ to learn more.



Instructions



Smart 2.4G remote controller



A. Pair the remote control:

After the lamp is powered on, press the power button for 5 seconds immediately (within 3 seconds). When the lamp flashes slowly for 3 times, it means the pairing is successful



Pair the remote control

B. Remove the remote control

After the bulb is powered on, press the power button for 5 seconds immediately (within 3 seconds). When the bulb flashes for 3 times, it means the removal is successful.



Remove the remote control

One-to-many control

The remote control can be paired with multiple WiFi bulbs at the same time, and multiple WIFI bulbs can be controlled with one key without limitation.

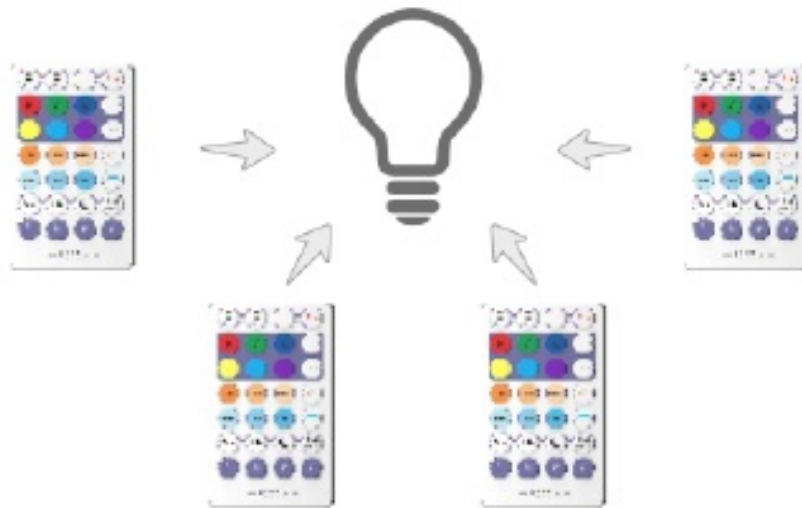
Note: Please refer to the steps of pairing or removing the remote control



Many-to-one control

A single WIFI bulb can be paired with multiple remote controls, and each remote control can control the same WiFi bulb separately. (a single bulb can support up to 16 remote controls)

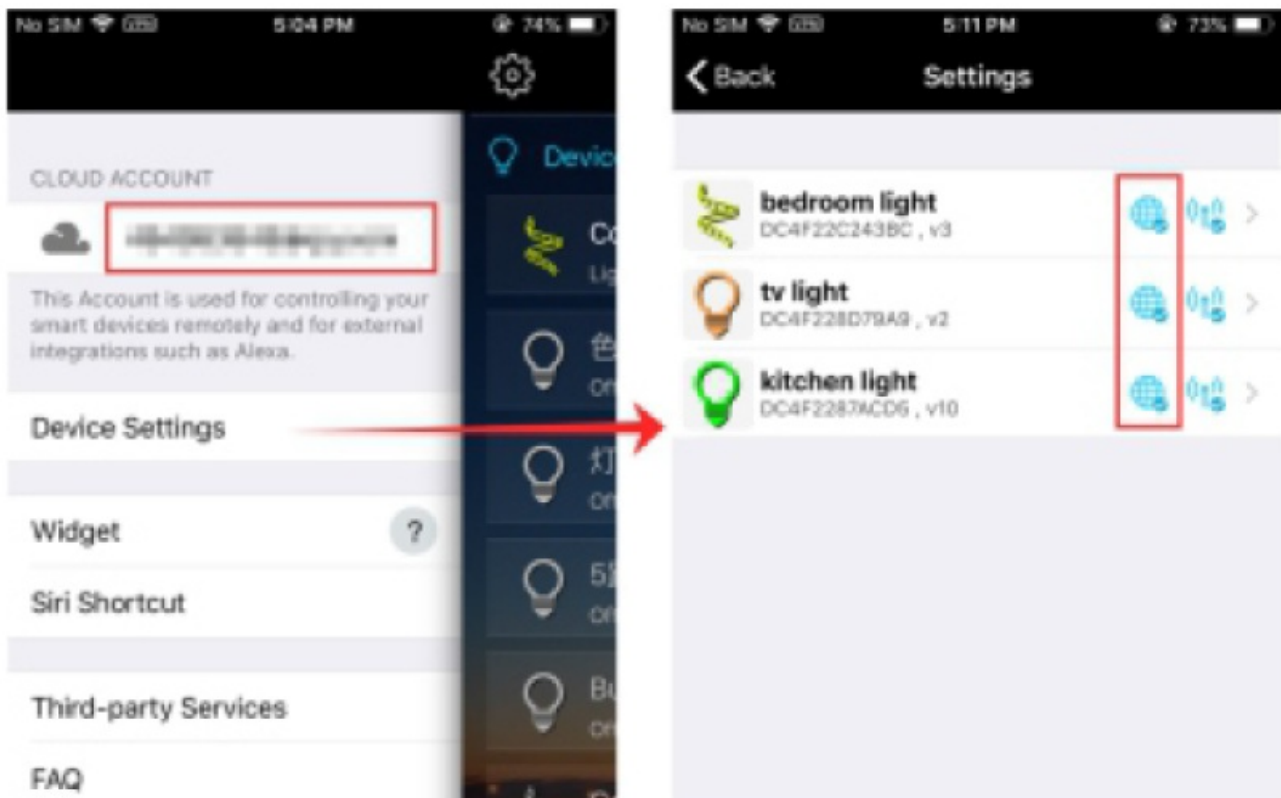
Note: Please refer to the steps of pairing or removing the remote control



How do I connect to Google Assistant?

Step 1: Creating your Magic Home cloud account.

In order to control your smart light with the Google Assistant or control them remotely, you need to create a Magic Home cloud account and sign in.

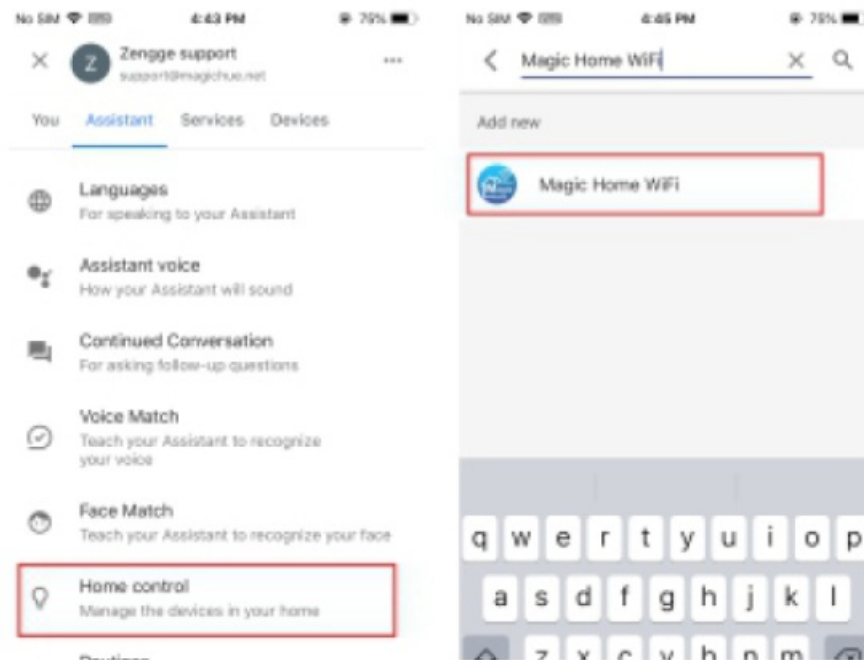


Step 2: Add your light and modify the name.

Make sure there's at least one smart light in the device list and enabled your lights for remote control. On the "Home" page, long press on the light you wish to rename.

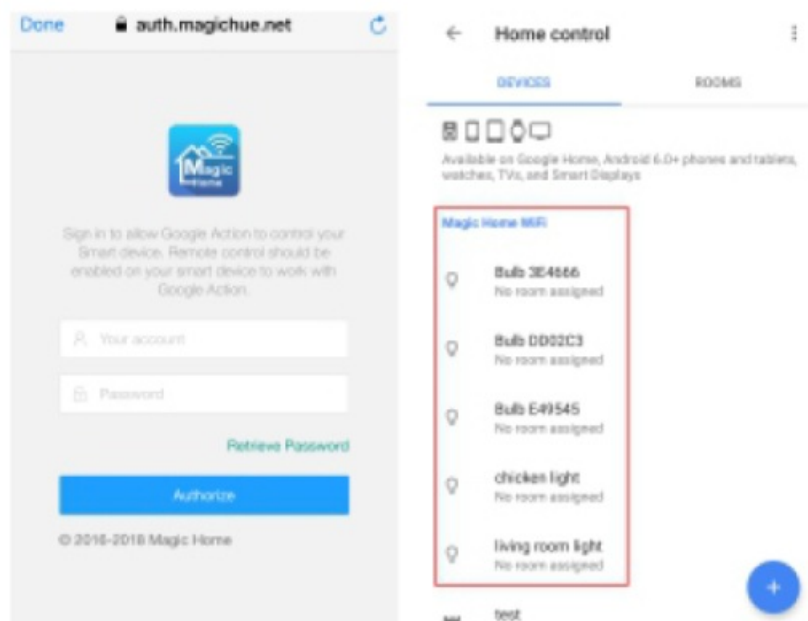
Step 3: Add Home Control Action.

Add device in Home Control of the Home app. Select "Magic Home WiFi".



Step 4: Log in with your app account.

Enter your app account and password to finish the account linking. (Using your Magic Home cloud account you used in step 1). Your device should be listed in the Home Control device list now.



Step 5: Control your light.

At this point, you're all set up. You can now control your lights by issuing voice commands.

Supported Commands:

Say "Ok Google " or "Hey Google", then...

- Turn on <light name>
- Dim slight name>
- Brighten <light name>
- Set <light name> to [50%]
- Dim/Brighten <light name> by[50%]

- Turnsight name> [color)
- Turn on/off all the lights
- Is<light name> on ?

Changing colors on your lights

Color Options for Google Home control of your smart device:

- Blue
- Cyan
- Green
- Crimson
- Fuchsia
- Gold
- Lavender
- Lime
- Magenta
- Orange
- .Salmon
- .Purple
- Sky Blue
- .Violet
- Red
- Teal
- Yellow
- Turquoise

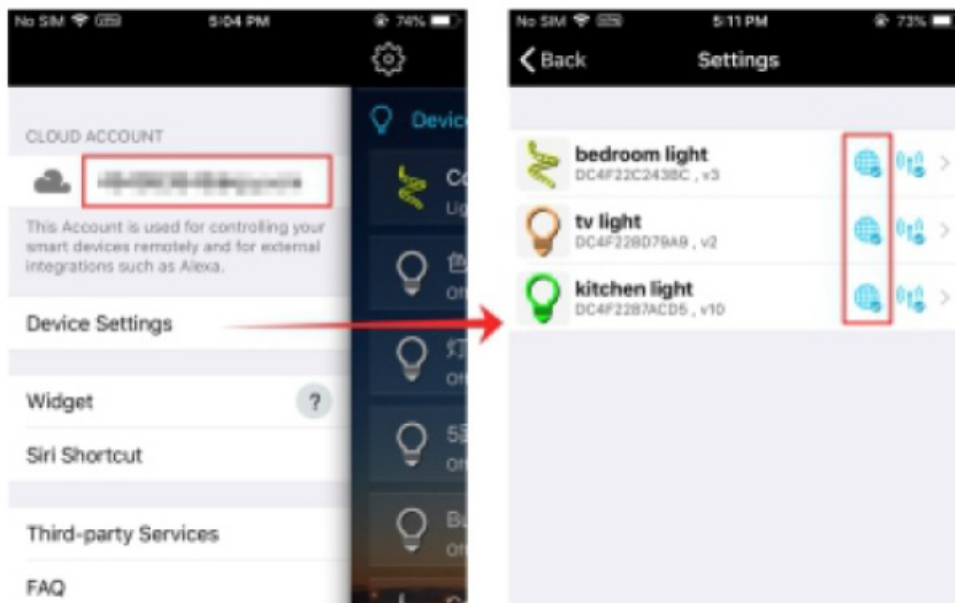
For Scenes

- You can activate scenes by following voice commands:
- Hey Google activates {scene name)
- Hey Google turn on {scene name)

How do I connect to Alexa?

Step 1: Creating your Magic Home cloud account.

In order to control your smart light with the Amazon Echo or control them remotely, you need to create a Magic Home cloud account and sign in.

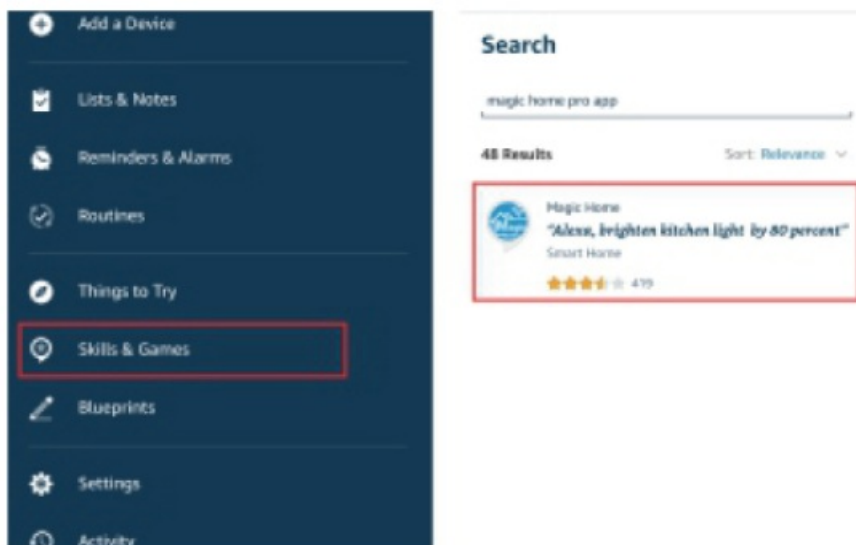


Step 2: Add your light and modify the name.

Make sure there's at least one smart light in the device list and enabled your lights for remote control. In the "Home" page, long press on the light you wish to rename.

Step 3: Enable Alexa Skill.

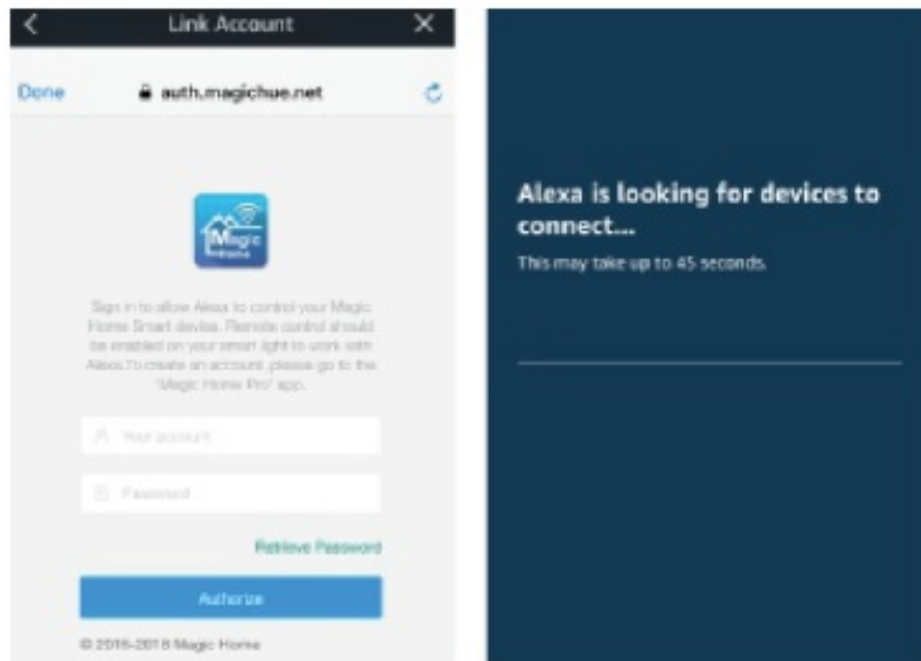
The next step is to download the Amazon Alexa app. Open the Amazon Alexa app and under the skills section, search for the "Magic Home" skill.



Step 4: Login and Discover Devices.

Enable the skill and sign in using your Magic Home cloud account you used in step 1.

The next step is to discover your smart lights from the Alexa app. You can say "Alexa, discover devices". Once Alexa has completed discovering your smart lights, they will appear in the Smart Home section of the Alexa app.



Step 5: Control your light.

At this point, you're all set up. You can now control your lights by issuing voice commands.

Supported Commands:

These are some of the currently supported Alexa voice commands for the smart light.

- Alexa, set [light name] to [0-100]%
- Alexa, turn [light name] on/off
- Alexa, dim/brighten [light name]
- Alexa, increase/decrease [light name]
- Alexa, set the [light name] light to red
- Alexa, change the [light name] to the color blue

For RGBW Light (Change to Warm White)

Alexa, set the [light name] to warm white

For CCT or RGBCW Light (Change to Color temperature)

- Alexa, make the [light name] warm white
- Alexa, change the [light name] to the cool white
- Alexa set the [light name] to daylight

Changing colors on your lights

Color Options for Alexa control of your smart device:

- Crimson Cyan
- Green
- .Magenta
- Purple
- Sky Blue

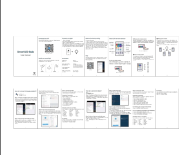
- Turquoise Violet
- Blue
- .Yellow
- Fuchsia Gold
- Lavender Lime
- Orange
- Red
- Teal
- Pink
- Salmon

For Scenes

You can activate scenes by following voice commands:

- Alexa start (scene name)
- Alexa turned on {scene name}

Documents / Resources

	<p>HAODENG ZJ-BWBL1H 800Lumens WiFi and Bluetooth and Remote 3-In-1 RGBCW WiFi LED Smart Bulb [pdf] User Manual</p> <p>ZJ-BWBL1H, 800Lumens WiFi and Bluetooth and Remote 3-In-1 RGBCW WiFi LED Smart Bulb</p>
--	--