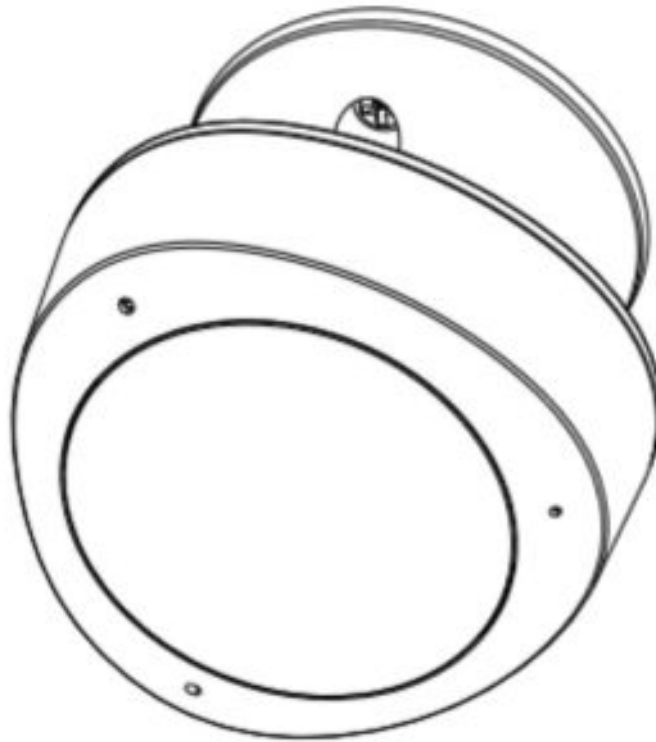




## Hank Smart Tech HKSWL-MS08 Motion Sensor User Manual

[Home](#) » [Hank Smart Tech](#) » Hank Smart Tech HKSWL-MS08 Motion Sensor User Manual 

Hank Smart Tech  
HKSWL-MS08 Motion Sensor  
User Manual



## Contents

- [1 PRODUCT OVERVIEW](#)
- [2 PRODUCT FEATURES](#)
- [3 PRODUCT STRUCTURE](#)
- [4 SPECIFICATIONS](#)
- [5 INSTALLATION](#)
- [6 Download app](#)
- [7 Registration](#)
- [8 Add Devices](#)
- [9 Device working condition](#)
- [10 Delete devices](#)
- [11 FCC NOTICE](#)
- [12 Documents / Resources](#)
- [13 Related Posts](#)

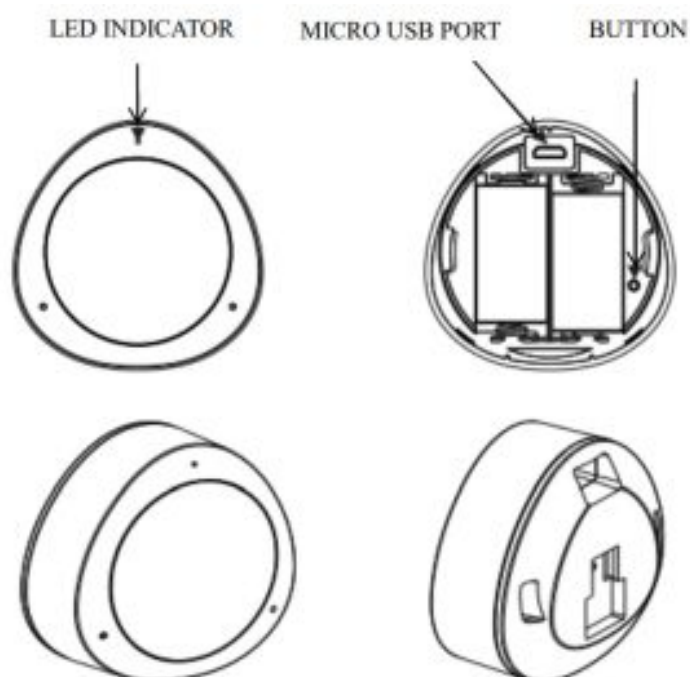
## PRODUCT OVERVIEW

HKSWL-MS08 is a Wi-Fi-based PIR sensor. You can check the device status, battery level, alarm record, and even receive a push notification via APP when it detects someone or animal moving within the detection range.

## PRODUCT FEATURES

- Digital PIR sensor with low power consumption and strong anti-interference performance
- Standard 2.4G wireless Wi-Fi communication technology, two methods for Wi-Fi inclusion, EZ and AP;
- 2x123A batteries operated or USB powered;
- Compliant with CE, FCC, and RoHS
- Elegant design and flexible installation
- Low battery alert and alarm push notification on APP
- Immediate report when vibration triggered

## PRODUCT STRUCTURE



## Definition of LED Indicator

AP Mode	LED indicator blink slow in blue
EZ Mode	LED indicator blinks fast in blue

## Button Instruction

In the network	Press and hold the Button for 5s then release, resume to default the setting, then it enters into EZ inclusion mode
Out of the network	Press and hold the Button for 5s then release to switch EZ/AP mode

### Note:

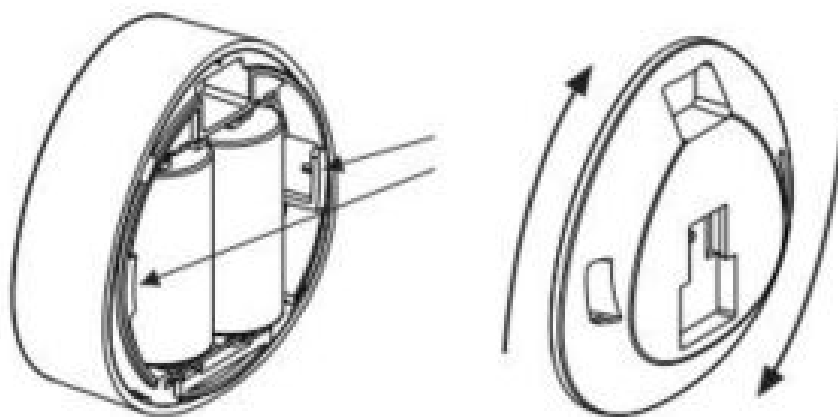
1. In the network: Device has been included in the network.
2. Out of the network: The device is in the status of the default setting, never configured Wi-Fi.

## SPECIFICATIONS

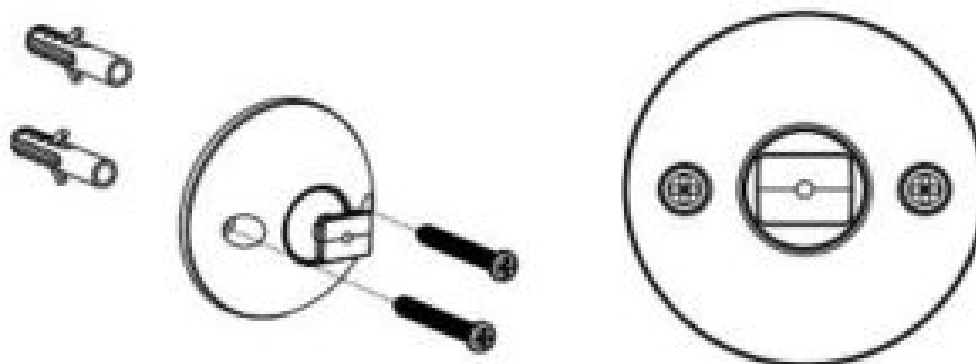
Power supply	6V:2*CR123A or 5V USB
Working current	80mA
Standby current	40uA
Battery Capacity	1300mAh
Detection Distance	8m
Detection Angle	120°
Sensitivity Level	8
Wireless transmitting and receiving frequency	2.4GHz-2.483GHz
network protocol supported	IEEE802.11 b/g/n
Encryption type	WEP/TKIP/AES,WPS
Transmitting power	802.11 b: +15dBm@ 11Mbps 802.11g: +15dBm@ 54 Mbps 802.11n: +13dBm@ MCS7
working temperature	– 10 – +40°C
Storage temperature	-20 – +60°C
Relative humidity	8 – 80%RH

## INSTALLATION

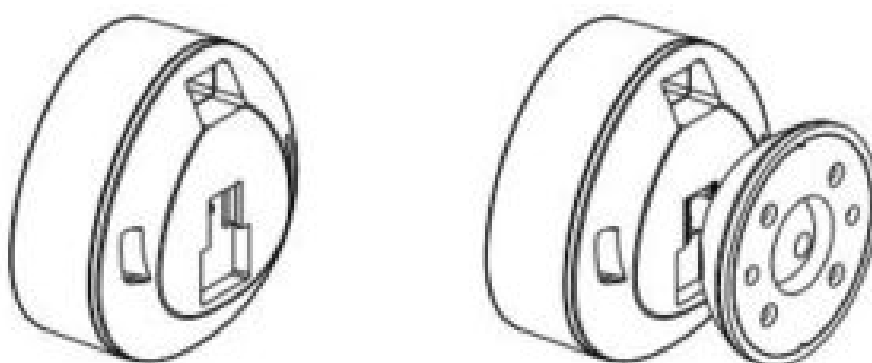
1. Power on (battery or USB)



2. install the sensor's holder in the desired location with crews or 3M glue.



3. insert the multi-sensor into its holder.



## Download app

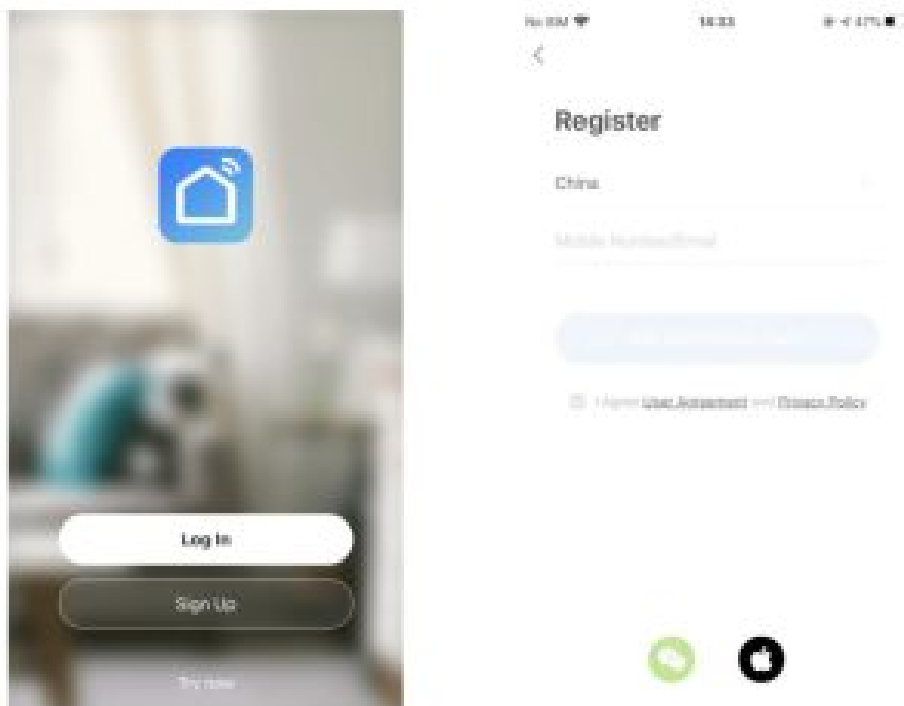
Scanning following QR codes to download APP for Android and IOS System.



iOS & Android  
<http://e.tuya.com/smartlife>

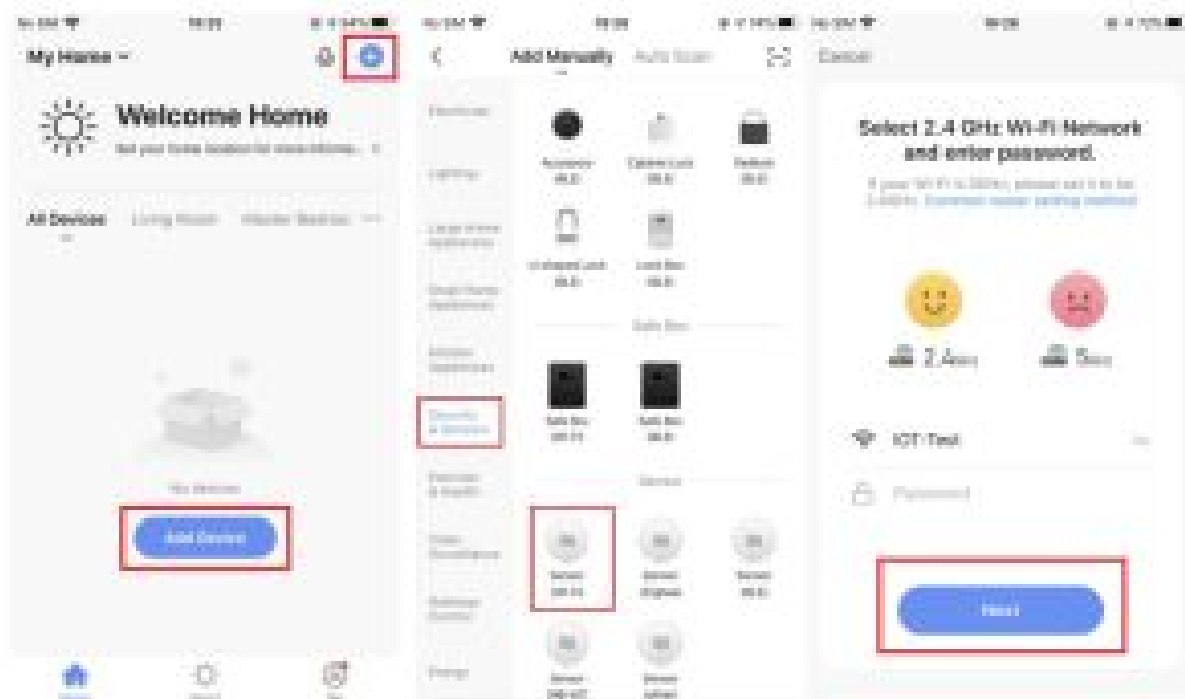
## Registration

Open the APP and type your mobile number or email address, and then confirm the password to complete the registration.



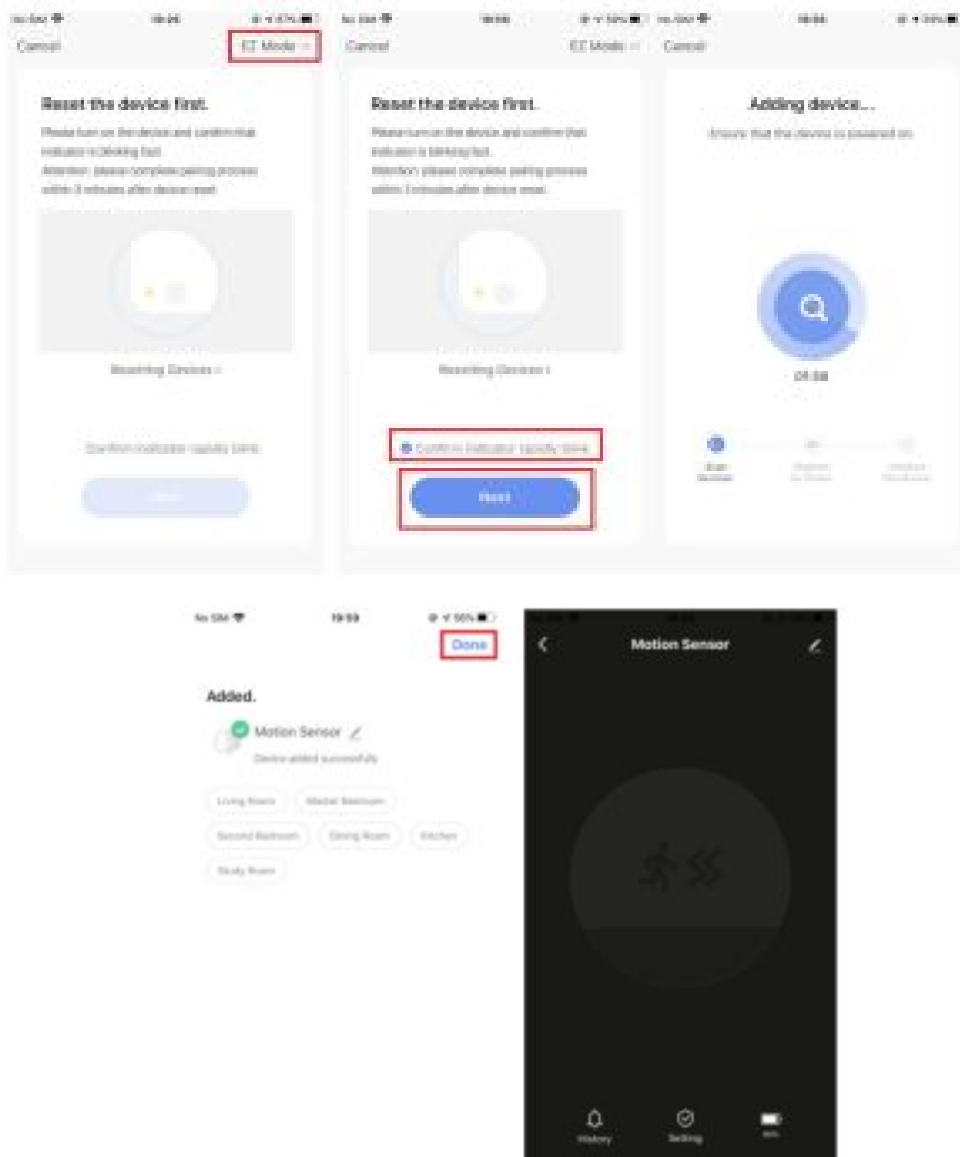
## Add Devices

Click "Add Device" or "+" upper right and then select the "Security & Sensors" and "Sensor(Wi-Fi)" next, input the Wi-Fi password. Click "Next".



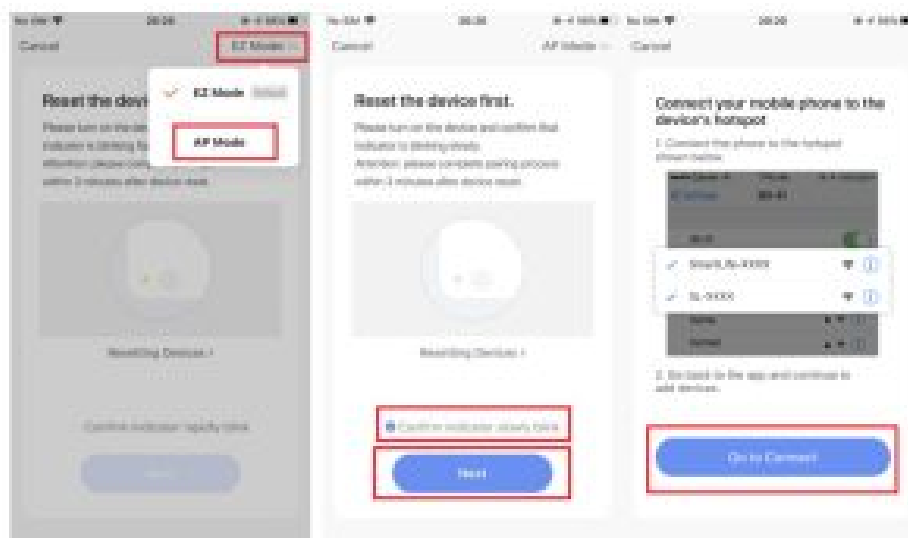
## EZ Mode

Power on, the blue indicator flashes one time, then the blue LED indicator will blink fast(if not, press and hold the button for 5S time), enter the EZ mode, click the "Confirm indicator rapidly blink", and click "Next", it will Adding device, once it is connected successfully, click "Done" upper right and switch to the device main interface.

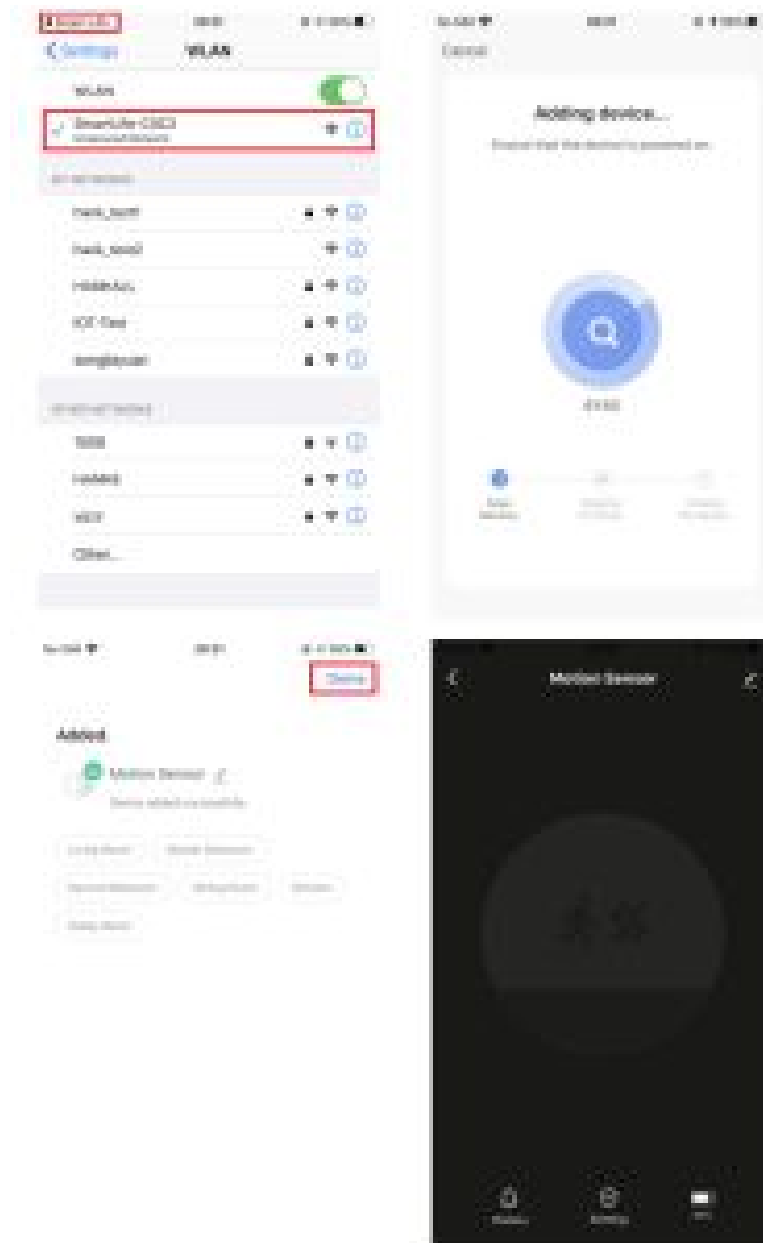


## AP Mode

Power on, the blue indicator flashes one time , then the blue LED indicator will blink fast and hold the button for 5S time, then the LED indicator will blink slowly in blue, Select “AP Mode” upper right, click “Confirm indicator slowly blink” and “Next”, then click “Go to Connect”.



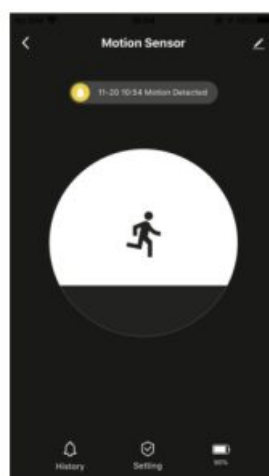
Open the smartphone Wi-Fi list, select SmartLife-XXXX, and get back when connected successfully, it will Add the device, Once it is connected successfully, click “Done” upper right and switch to the device main interface.



## Device working condition

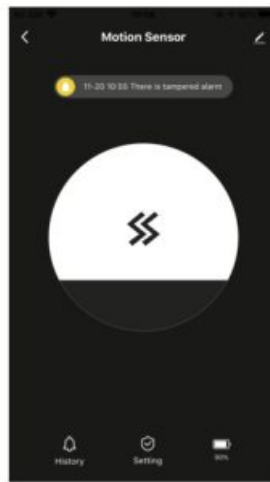
### Motion Detected

When it detects someone or animal moving within the detection range, the device's main interface would make a difference and push notification.



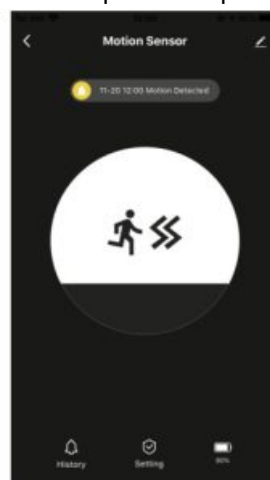
### Tampered alarm

When it tampers, the device's main interface would make a difference and push Tampered alarm notification.



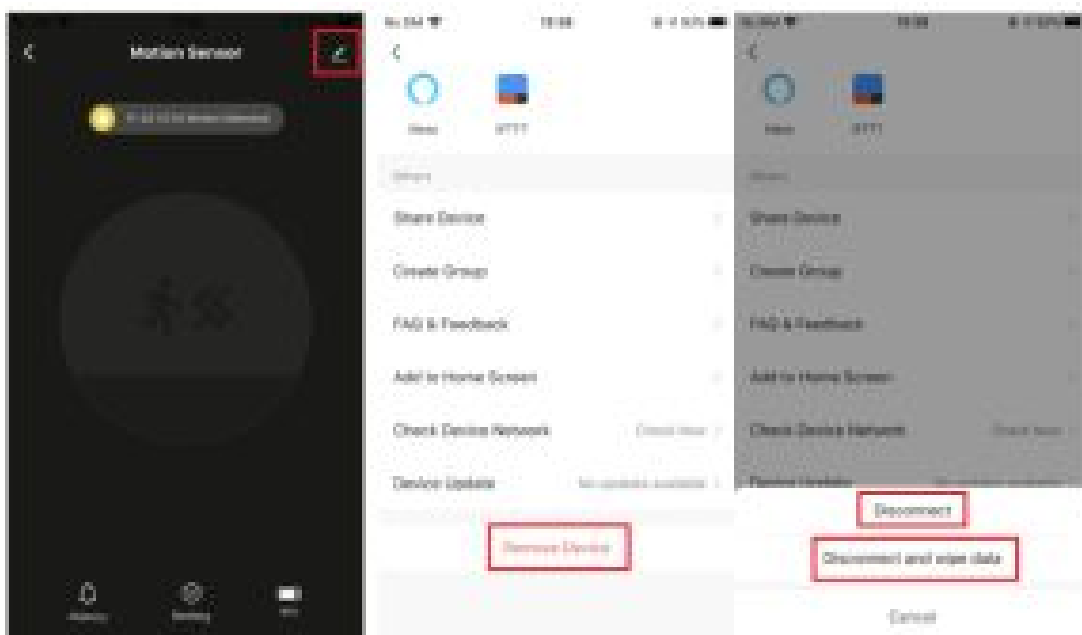
### Motion Detected and Tampered alarm

If it is tampered with and detects someone or animal moving within the detection range at the same time, the device's main interface would make a difference and push Tampered alarm notification.

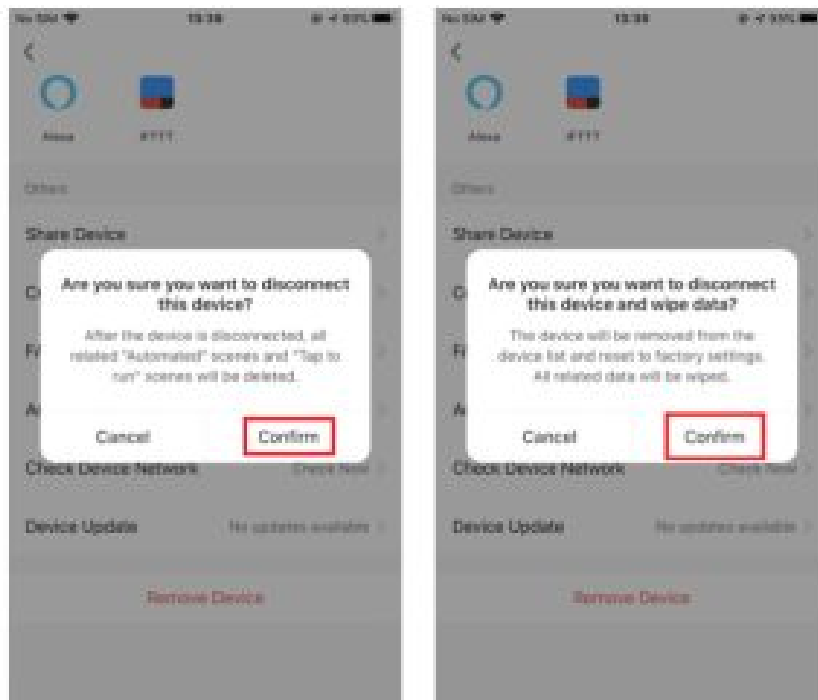


### Delete devices

Click the upper right on the device main interface, click "Remove Device", select "Disconnect" and then click "Confirm" to remove this device from APP. Select "Disconnect and wipe data" and then click "Confirm" to remove this device from APP and all related data will be wiped.







## FCC NOTICE

This device complies with part 15 of the FCC Rules. Operation is subject to the following two conditions:

1. This device may not cause harmful interference
2. This device must accept any interference received, including interference that may cause undesired operation.

The manufacturer is not responsible for any radio or TV interference caused by unauthorized modifications or change to this equipment. Such modifications or changes could void the user's authority to operate the equipment.

This equipment has been tested and found to comply with the limits for a Class B digital device, pursuant to part 15 of the FCC Rules. These limits are designed to provide reasonable protection against harmful interference in a residential installation. This equipment generates, uses and can radiate radio frequency energy and, if not installed and used in accordance with the instructions, may cause harmful interference to radio communications. However, there is no guarantee that interference will not occur in a particular installation. If this equipment does cause harmful interference to radio or television reception, which can be determined by turning the equipment off and on, the user is encouraged to try to correct the interference by one or more of the following measures:

- Reorient or relocate the receiving antenna.
- Increase the separation between the equipment and receiver.
- Connect the equipment into an outlet on a circuit different from that to which the receiver is connected.
- Consult the dealer or an experienced radio/TV technician for help.

This equipment complies with FCC radiation exposure limits set forth for an uncontrolled environment. This equipment should be installed and operated with a minimum distance of 20cm between the radiator & your body.

## Documents / Resources



Hank Smart Tech HKSWL-MS08

- **FEATURES**
  - High precision motion sensor
  - High precision motion sensor
  - High precision motion sensor
- **INSTALLATION**
  - Mounting instructions
  - Mounting instructions
  - Mounting instructions
- **OPERATION**
  - Operation instructions
  - Operation instructions
  - Operation instructions
- **MAINTENANCE**
  - Maintenance instructions
  - Maintenance instructions
  - Maintenance instructions
- **WARRANTY**
  - Warranty instructions
  - Warranty instructions
  - Warranty instructions

[Hank Smart Tech HKSWL-MS08 Motion Sensor](#) [pdf] User Manual  
MS08, 2AXIE-MS08, 2AXIEMS08, HKSWL-MS08 Motion Sensor, Motion Sensor