


HAMENKKAODER
G13-I True Wireless
Earbuds



HamengKaoder G13-I True Wireless Earbuds Owner's Manual

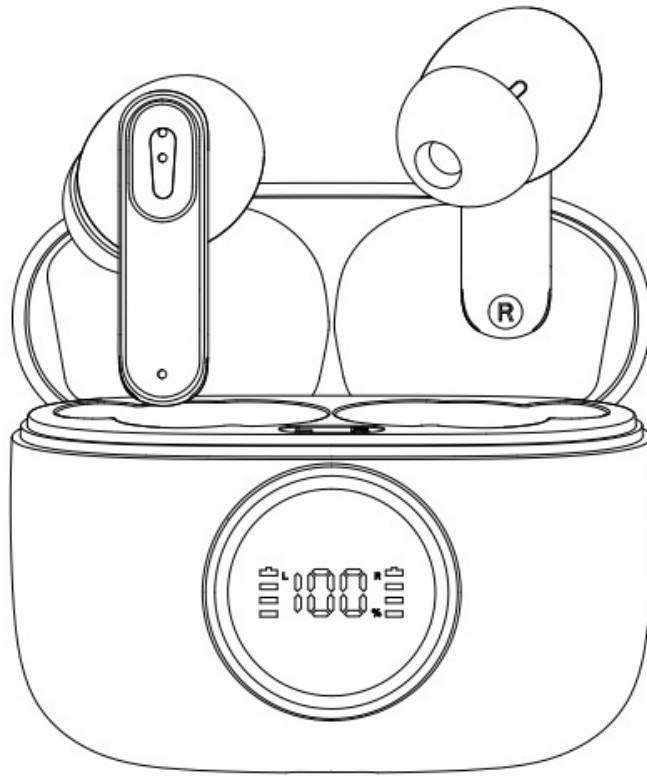
[Home](#) » [HamengKaoder](#) » HamengKaoder G13-I True Wireless Earbuds Owner's Manual 

Contents

- [1 HamengKaoder G13-I True Wireless Earbuds](#)
- [2 Specifications](#)
- [3 FAQs](#)
- [4 Documents / Resources](#)
 - [4.1 References](#)

HAMENKKAODER

HamengKaoder G13-I True Wireless Earbuds



Specifications

- **Earbuds Bluetooth version:** V5.3
- **Working distance:** 10M (with no obstacle)
- **Battery:** 40mAh
- **Working time:** approx 7 hours
- **Charging time:** 1 hour
- **Charging case Battery:** 300mAh
- **Charging time:** 1.5 hours
- **Input:** 5V 1A
- **Output:** 5V 60mAh

Please read this manual carefully before using the product and keep it in a safe place.

PACKING LIST

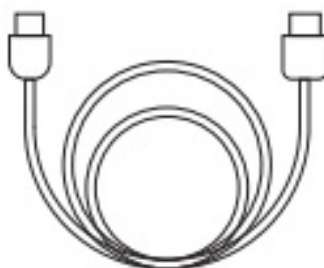
- MODEL: G13-I
- X 1



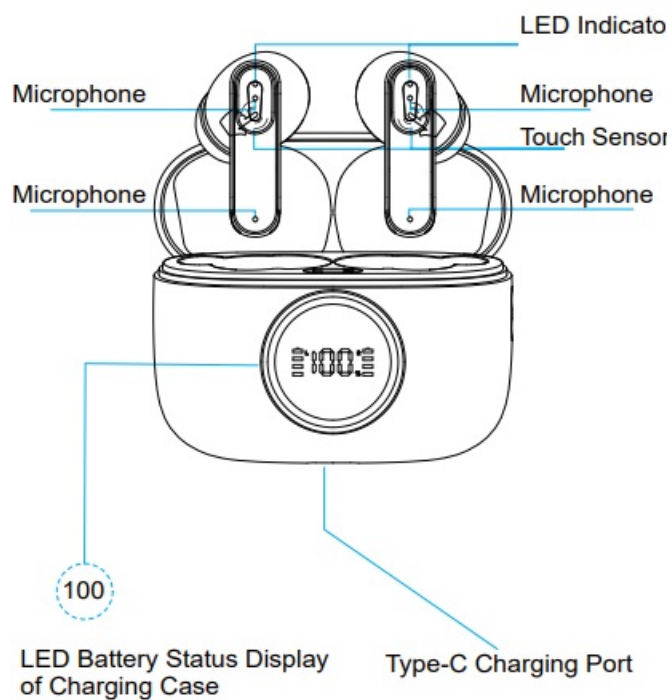
- User Manual
- X 1



- Type-C Charging Cable
- X 1

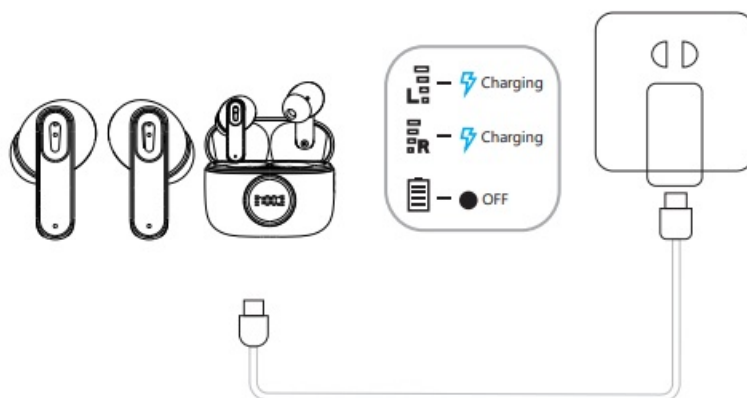


DIAGRAM

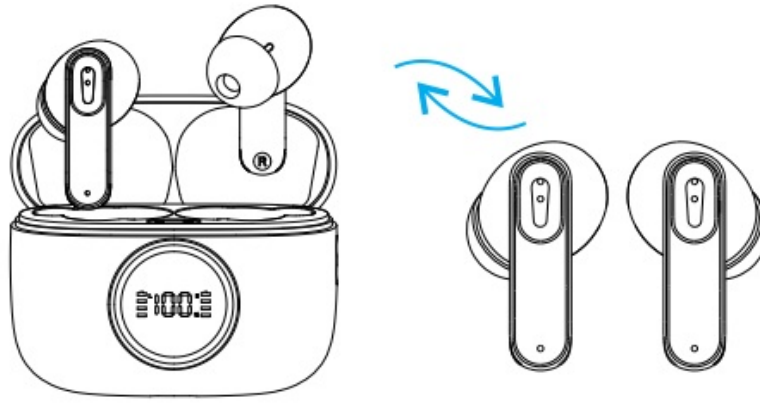


CHARGING

- Fully charge both the earbuds and the charging case before the first-time using.
- To prevent damage, use the provided Type-C cable.
- Fully dry off the earbuds and the USB port before charging.
- Close fully the charging case cover to charge the earbuds.



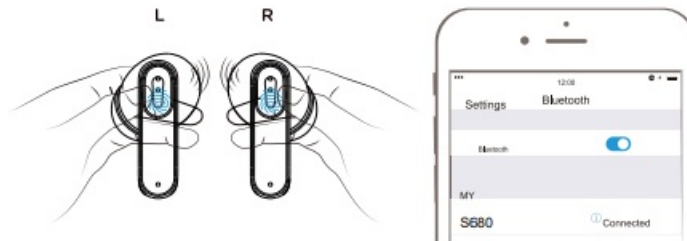
POWER ON/OFF



- Take earbuds out from the charging case and they will auto power on.
- Put earbuds back into the charging case and close the case, then it will auto power off.



PAIRING



- Put both earphones into charging case to activate them, then take out both earbuds will auto power on and pair with each other. After one side white LED blinks quickly, the other side white LED flashes slowly, then select "S680".

Note:

- The earbud will reconnect to the paired device by priority. If you want to pair to the second smartphone. Please disconnect Bluetooth on the paired smartphone.

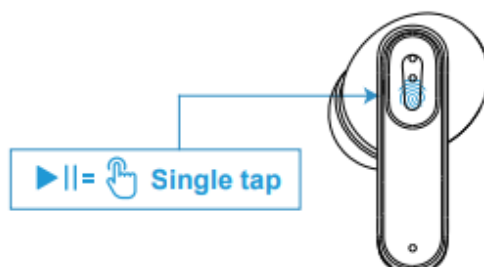
TOUCH CONTROL

⏮ / ⏭ Next / Previous Track



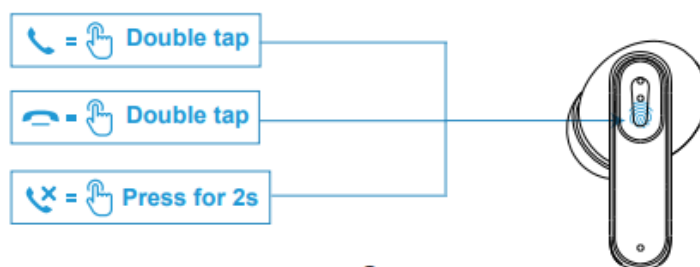
▶|| Play / Pause

Either Earbud



Answer / Hang up / Reject

Either Earbud



R



Decrease / Increase Volume

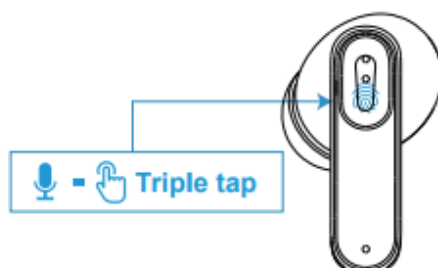
L

R



Voice Assistant

Either Earbud



Reset Earbuds



FCC Warning

This device complies with Part 15 of the FCC Rules. Operation is subject to the following two conditions:

1. This device may not cause harmful interference, and (2) this device must accept any interference received, including interference that may cause undesired operation.

NOTE 1:

- This equipment has been tested and found to comply with the limits for a Class B digital device, pursuant to part 15 of the FCC Rules. These limits are designed to provide reasonable protection against harmful interference in a residential installation.
- This equipment generates, uses and can radiate radio frequency energy and, if not installed and used in accordance with the instructions, may cause harmful interference to radio communications.
- However, there is no guarantee that interference will not occur in a particular installation. If this equipment does cause harmful interference to radio or television reception, which can be determined by turning the equipment off and on, the user is encouraged to try to correct the interference by one or more of the following measures:
 - Reorient or relocate the receiving antenna.
 - Increase the separation between the equipment and receiver.
 - Connect the equipment into an outlet on a circuit different from that to which the receiver is connected.
 - Consult the dealer or an experienced radio/TV technician for help.

NOTE 2:

- Any changes or modifications to this unit not expressly approved by the party responsible for compliance could void the user's authority to operate the equipment.
- The device has been evaluated to meet general RF exposure requirement. The device can be used in portable exposure condition without restriction.

9 Pantygraigwen Road, Pontypridd, Mid Glamorgan, CF37 2RR, UK tanmetbiz@outlook.com 35510 Butzbach, Germany eubridge@outlook.com

FAQs

Why is there no sound from the headphones?

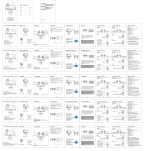
- Verify that the headphones are working.
- Check that the volume of the headphones are appropriate.
- Check the headphones are normally connected to the mobile phone.

- Make sure the headphones are in normal working area.
- Keep the headphones distance at 10 meters.

Why only one of my headphones working?How should I reset the earphones?

- Try to tap either headphone by 5 times to remove pairing .
- Then put both headphones back into the charging case and wait for 10s ,then take them out to active them and follow the instruction manual to pair the device again.

Documents / Resources

	HamengKaoder G13-I True Wireless Earbuds [pdf] Owner's Manual G13-I True Wireless Earbuds, G13-I, True Wireless Earbuds, Wireless Earbuds, Earbuds
---	---

References

- [User Manual](#)

[Manuals+](#), [Privacy Policy](#)

This website is an independent publication and is neither affiliated with nor endorsed by any of the trademark owners. The "Bluetooth®" word mark and logos are registered trademarks owned by Bluetooth SIG, Inc. The "Wi-Fi®" word mark and logos are registered trademarks owned by the Wi-Fi Alliance. Any use of these marks on this website does not imply any affiliation with or endorsement.