

hama WKM-750 Keyboard and Mouse Set



hama WKM-750 Keyboard and Mouse Set User Manual

[Home](#) » [Hama](#) » hama WKM-750 Keyboard and Mouse Set User Manual 

Contents

- 1 hama WKM-750 Keyboard and Mouse Set
- 2 Product Specifications
- 3 Product Usage Instructions
- 4 Assembly
- 5 Documents / Resources
 - 5.1 References
- 6 Related Posts

hama

hama WKM-750 Keyboard and Mouse Set



Product Specifications

- Product Name: Keyboard and Mouse Set
- Model Number: xx 173069

- Model: WKM-750
- Connectivity: 2.4 GHz wireless and Bluetooth
- Compatibility: Android, Windows, MacOS, iOS, iPadOS
- Mouse DPI Settings: 800 DPI, 1200 DPI, 1600 DPI, 2400 DPI, 3200 DPI

Product Usage Instructions

Connecting via 2.4 GHz Wireless

1. Turn on the keyboard and mouse using the ON/OFF switch.
2. Put both devices in pairing mode by pressing the designated button (B Pairing mode 2.4 GHz).
3. Insert the USB-A receiver into your computer.
4. Wait for the devices to connect; they will show a successful connection indicator.

Connecting via Bluetooth

1. Turn on Bluetooth on your device.
2. Put the keyboard and mouse in Bluetooth pairing mode (C Pairing mode Bluetooth).
3. Select the keyboard and mouse from the available Bluetooth devices on your device.
4. Follow any on-screen instructions to complete the pairing process.

Adjusting Mouse DPI Settings

You can adjust the mouse sensitivity by switching between different DPI settings:

- 800 DPI
- 1200 DPI
- 1600 DPI
- 2400 DPI
- 3200 DPI

Additional Features

- The product is compatible with various operating systems including Android, Windows, MacOS, iOS, and iPadOS.
- The keyboard has AI assistant support for enhanced functionality.

Frequently Asked Questions (FAQ)

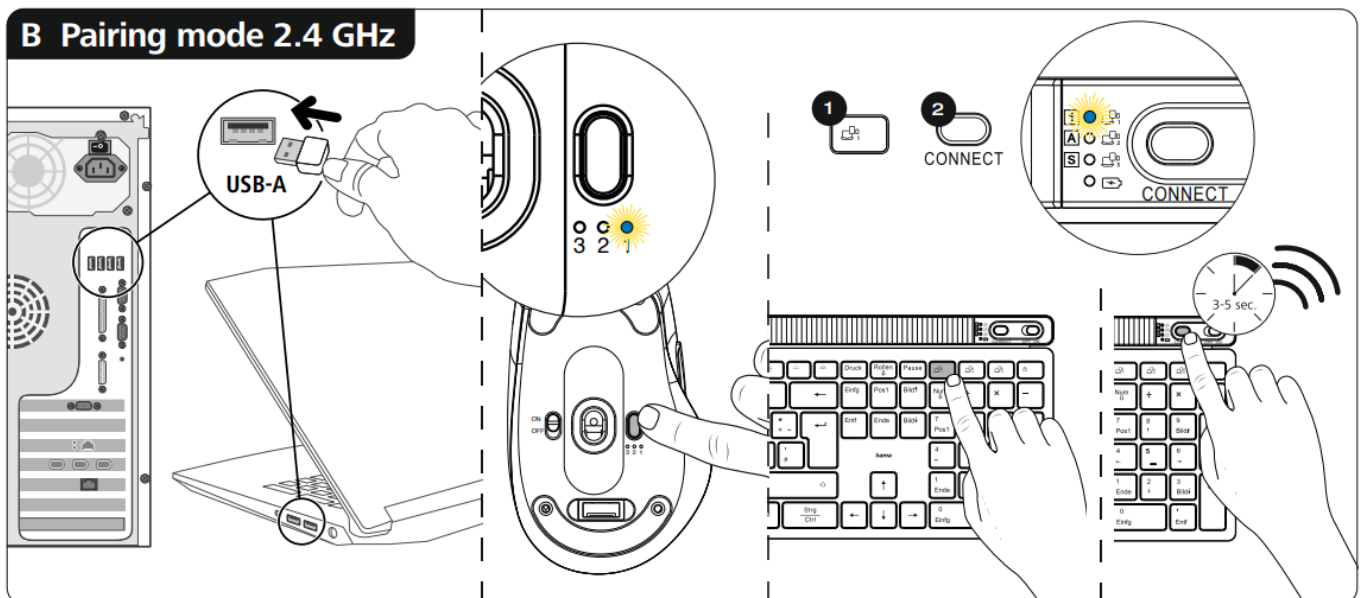
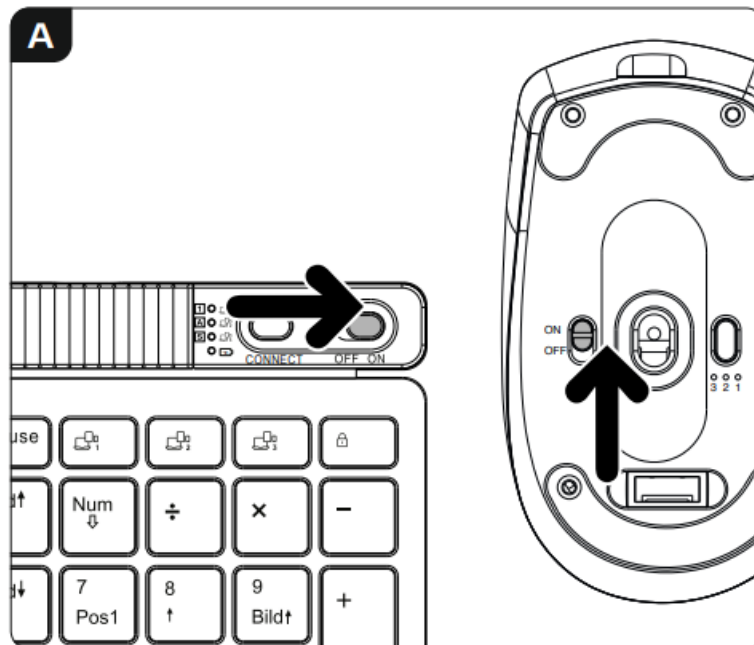
• **Q: How do I switch between the 2.4 GHz wireless mode and Bluetooth mode?**

A: To switch between modes, use the designated buttons for 2.4 GHz wireless (B Pairing mode 2.4 GHz) and Bluetooth (C Pairing mode Bluetooth) on the keyboard and mouse.

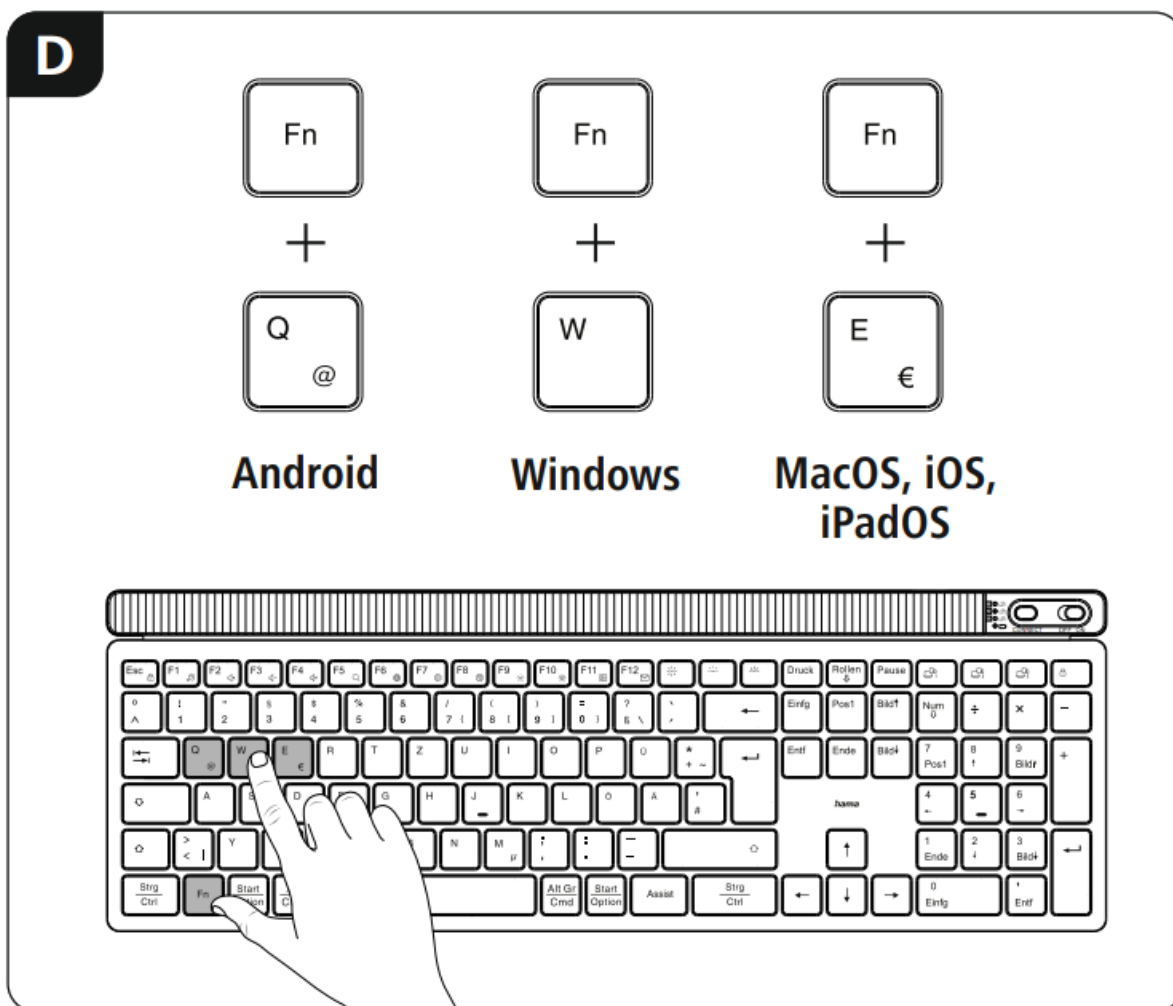
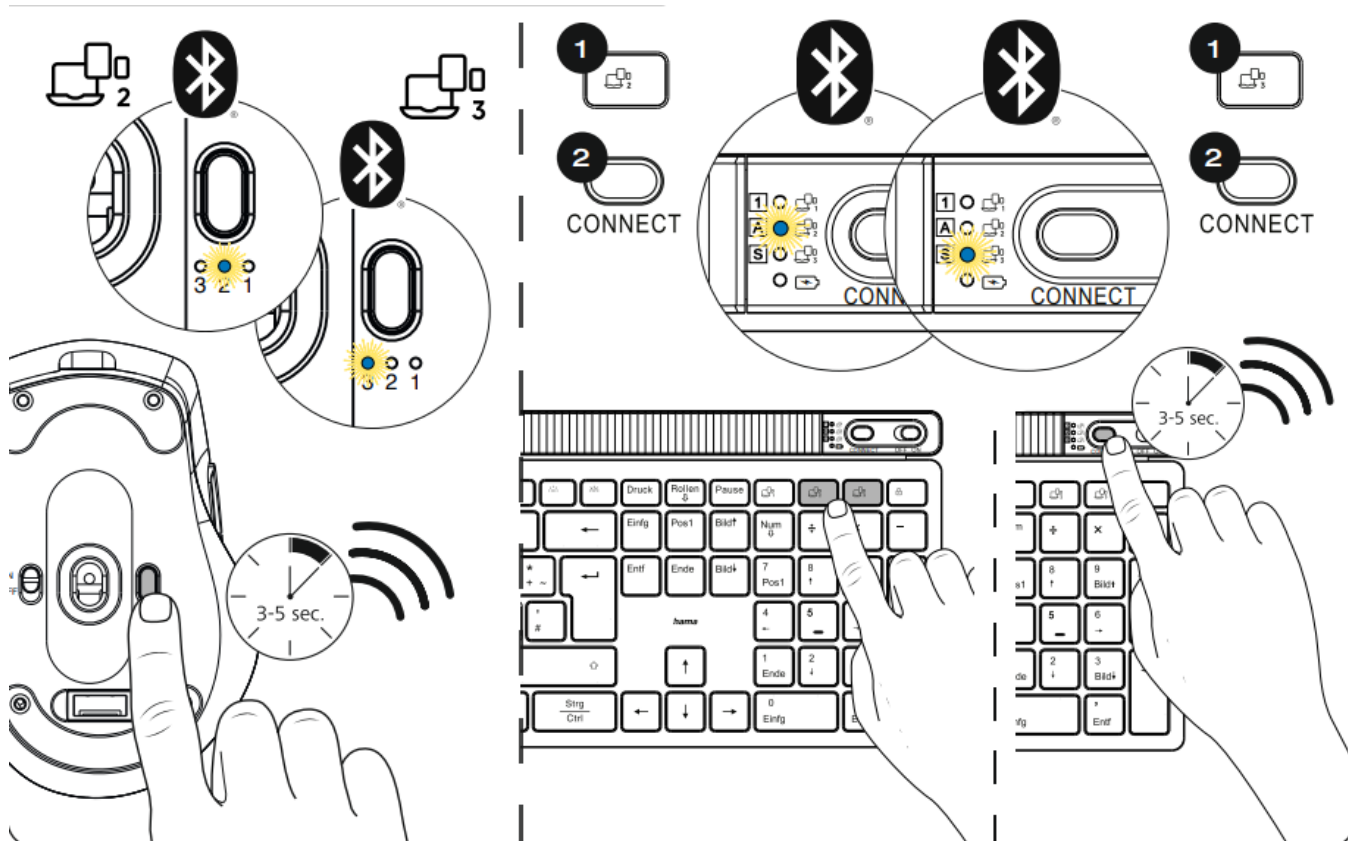
• **Q: Can I use this product with both a Windows PC and an iPad?**

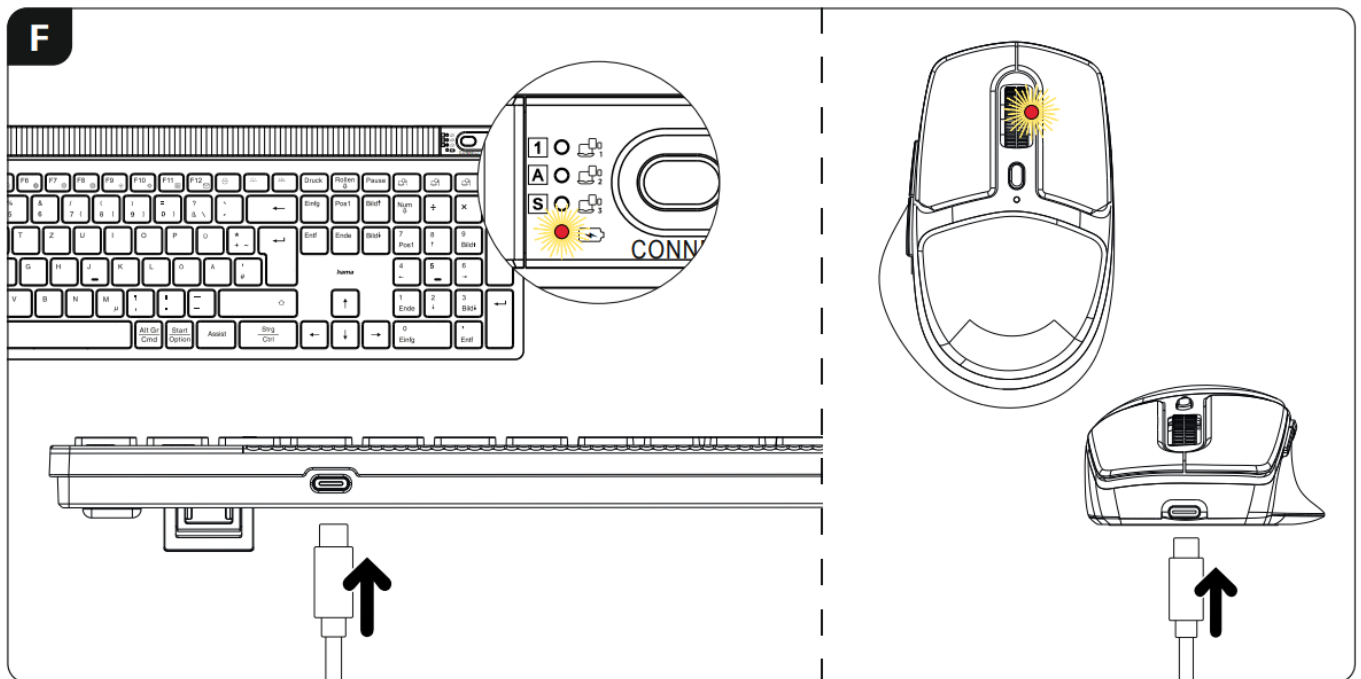
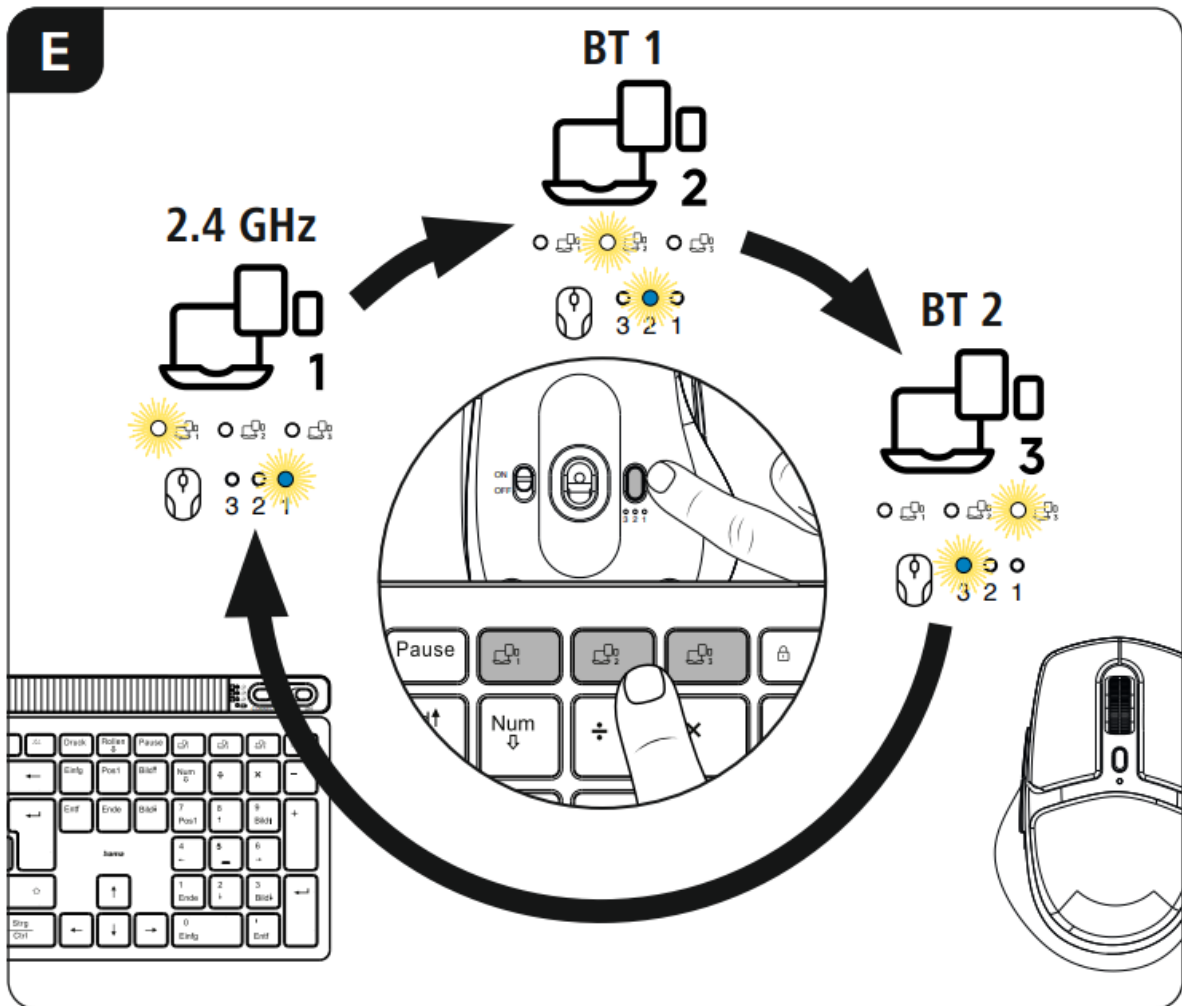
A: Yes, this product is compatible with a wide range of devices including Windows PCs and iPads.

Assembly

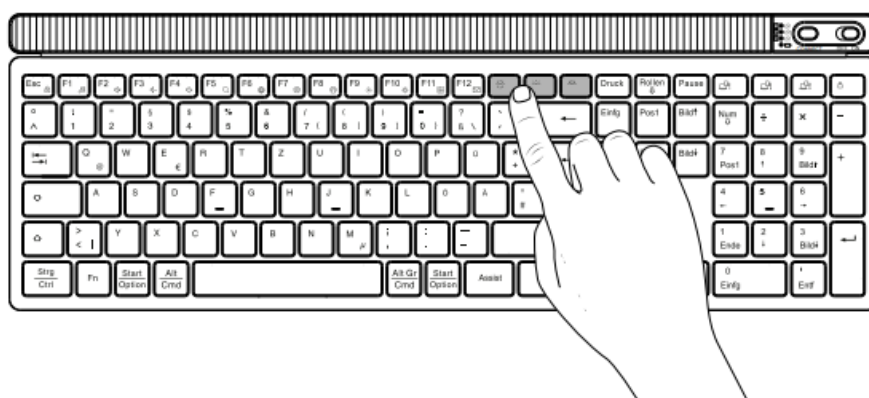


Pairing mode Bluetooth

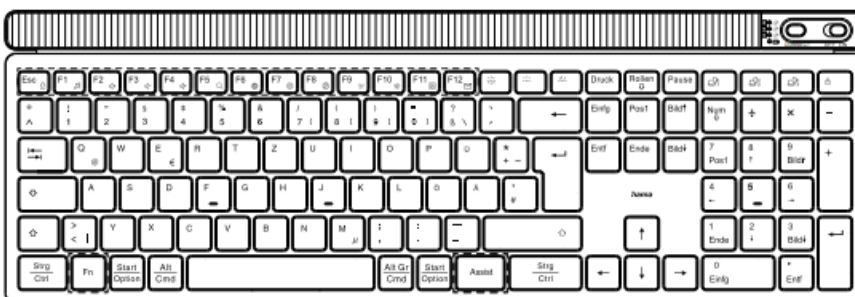
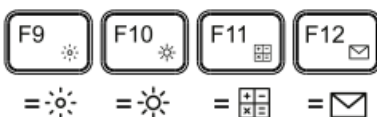
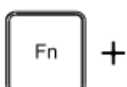
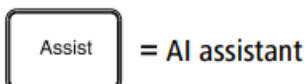


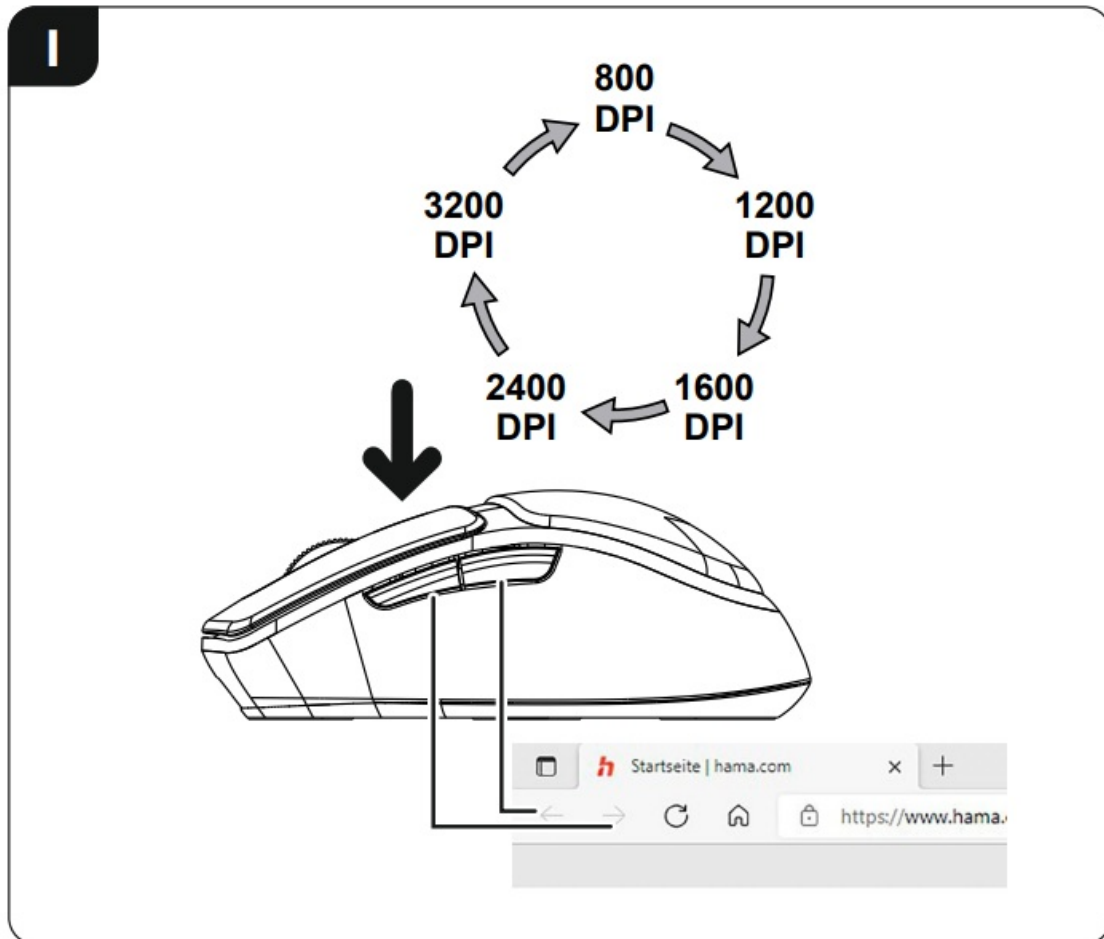


G



H





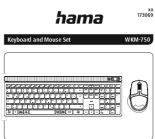
Hama GmbH & CoKG 86652 Monheim /Germany www.hama.com



www.hama.com/nep

All listed brands are trademarks of the corresponding companies. Errors and omissions excepted, and subject to technical changes. Our general terms of delivery and payment are applied.

Documents / Resources

	<p>hama WKM-750 Keyboard and Mouse Set [pdf] User Manual 00173069, WKM-750 Keyboard and Mouse Set, WKM-750, Keyboard and Mouse Set, Mouse Set, Set</p>
---	--

References

- [hama.com](https://www.hama.com)
- [hama.com/nep](https://www.hama.com/nep)

- [User Manual](#)

[Manuals+](#), [Privacy Policy](#)

This website is an independent publication and is neither affiliated with nor endorsed by any of the trademark owners. The "Bluetooth®" word mark and logos are registered trademarks owned by Bluetooth SIG, Inc. The "Wi-Fi®" word mark and logos are registered trademarks owned by the Wi-Fi Alliance. Any use of these marks on this website does not imply any affiliation with or endorsement.