



# hama WKM-550 Multi Device Keyboard Mouse Set User Guide

[Home](#) » [Hama](#) » hama WKM-550 Multi Device Keyboard Mouse Set User Guide 

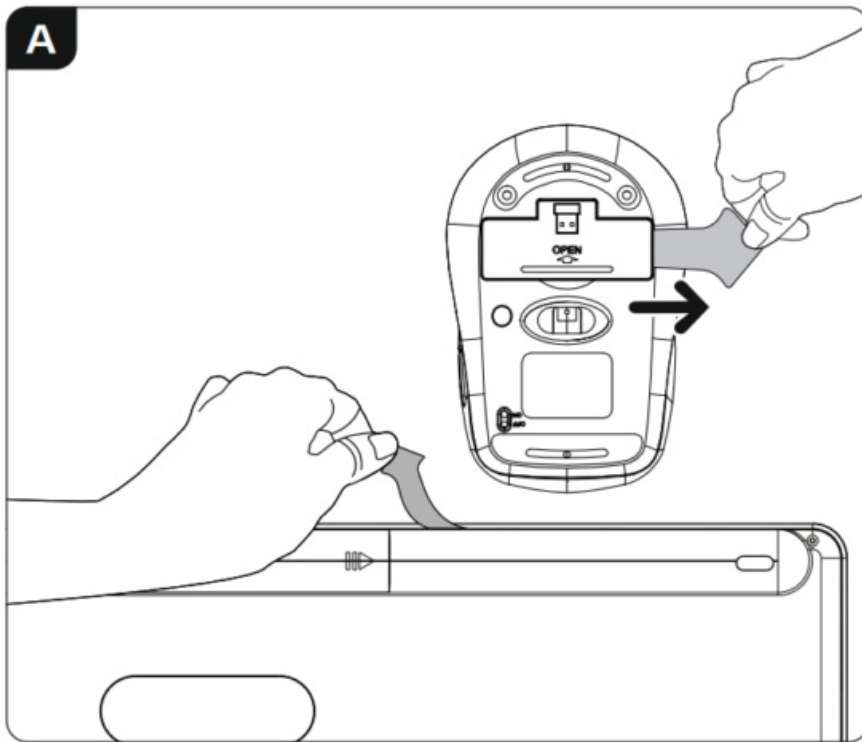
## hama WKM-550 Multi Device Keyboard Mouse Set



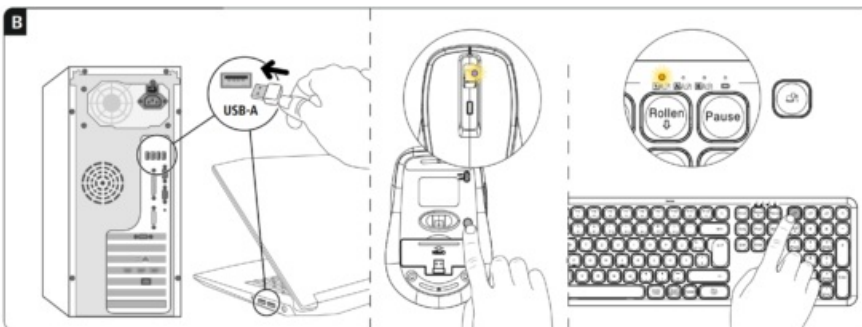
### Contents

- [1 Keyboard and Mouse Set](#)
- [2 Pairing mode 2.4 GHz](#)
- [3 Pairing mode Bluetooth](#)
- [4 CUSTOMER SUPPORT](#)
- [5 Documents / Resources](#)
  - [5.1 References](#)
- [6 Related Posts](#)

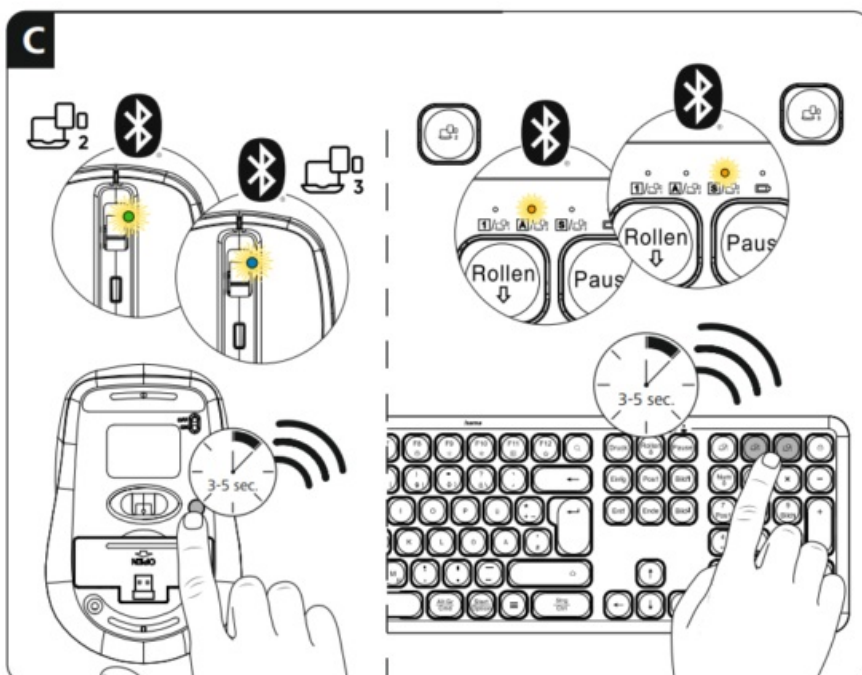
### Keyboard and Mouse Set



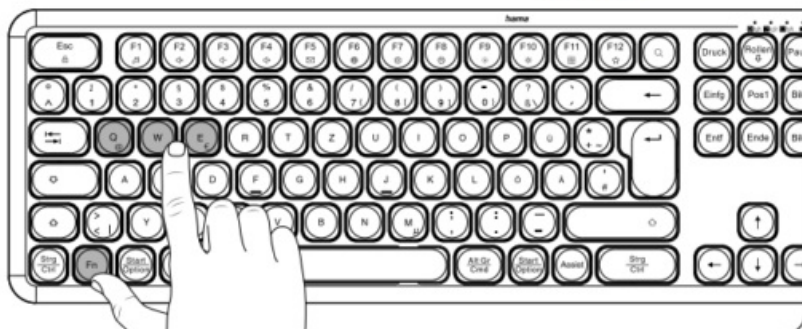
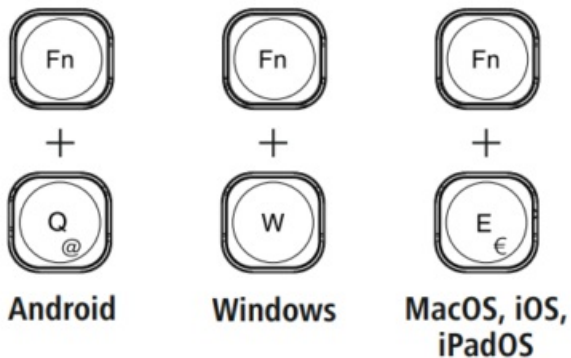
## Pairing mode 2.4 GHz



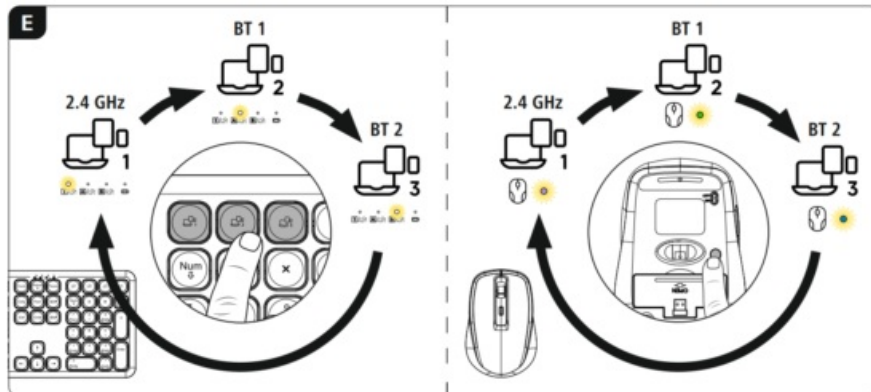
## Pairing mode Bluetooth



**D**

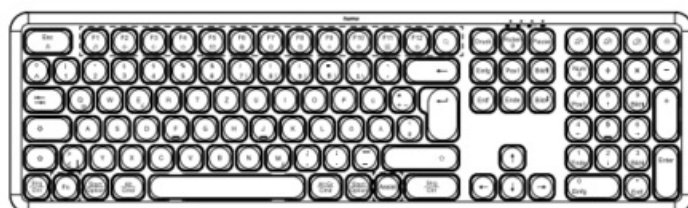


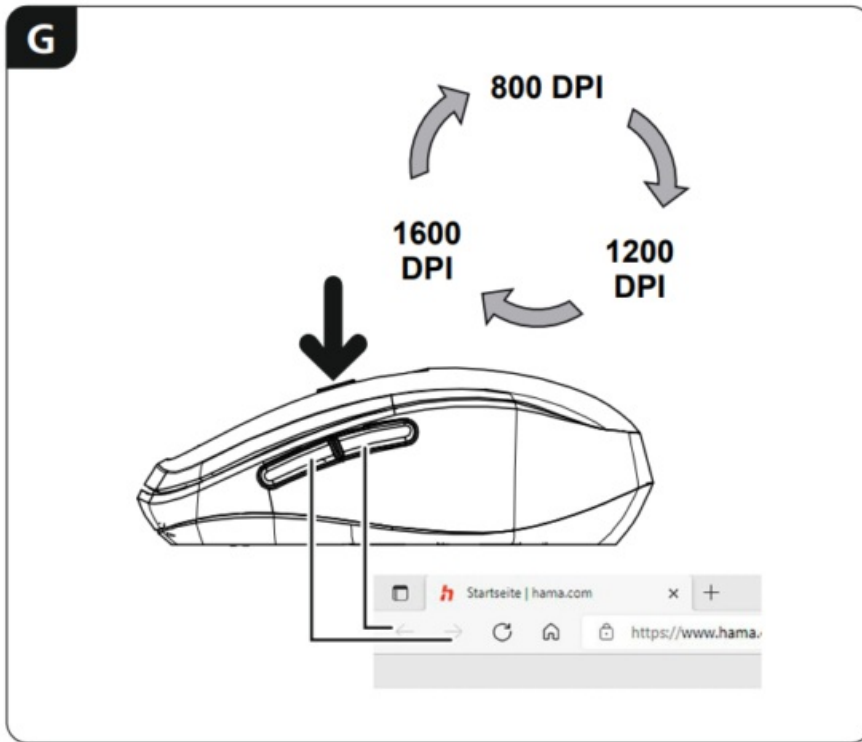
**E**



**F**

**Assist** = AI assistant





## CUSTOMER SUPPORT

**Hama GmbH & Co KG**  
86652 Monheim/ Germany  
[www.hama.com](http://www.hama.com)  
[www.hama.com/nep](http://www.hama.com/nep)



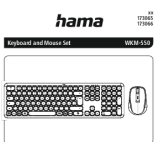
All listed brands are trademarks of the corresponding companies. Errors and omissions excepted, and subject to technical changes. Our general terms of delivery and payment are applied.

x173065\_173066/05.24



# ***hama***

## Documents / Resources

	<p><a href="#">hama WKM-550 Multi Device Keyboard Mouse Set</a> [pdf] User Guide</p> <p>WKM-550, WKM-550 Multi Device Keyboard Mouse Set, Multi Device Keyboard Mouse Set, De vice Keyboard Mouse Set, Keyboard Mouse Set, Mouse Set, Set</p>
---	---

## References

- [User Manual](#)

[Manuals+](#), [Privacy Policy](#)

This website is an independent publication and is neither affiliated with nor endorsed by any of the trademark owners. The "Bluetooth®" word mark and logos are registered trademarks owned by Bluetooth SIG, Inc. The "Wi-Fi®" word mark and logos are registered trademarks owned by the Wi-Fi Alliance. Any use of these marks on this website does not imply any affiliation with or endorsement.