



hama WKM-550 Keyboard and Mouse Set Instruction Manual

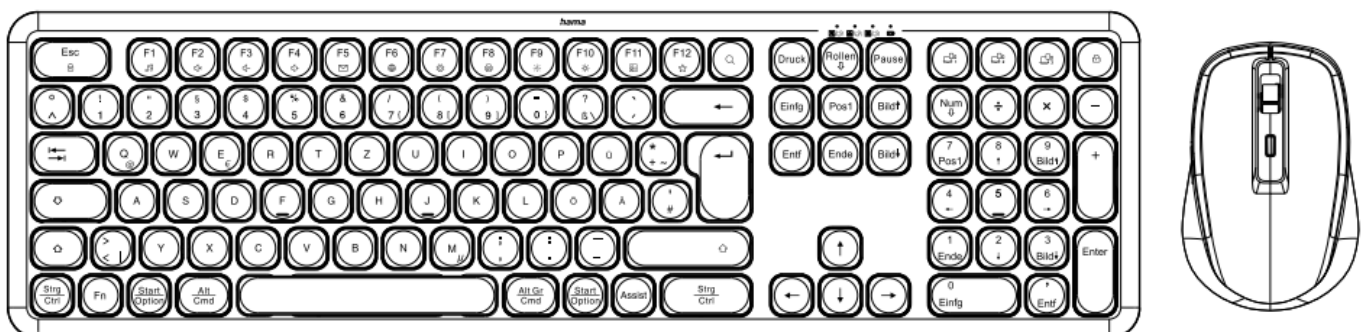
[Home](#) » [Hama](#) » hama WKM-550 Keyboard and Mouse Set Instruction Manual 

Contents

- [1 hama WKM-550 Keyboard and Mouse Set](#)
- [2 Product Information](#)
- [3 Product Usage Instructions](#)
- [4 BATTERY REPLACEMENT](#)
- [5 Pairing mode](#)
- [6 FUNCTION](#)
- [7 Documents / Resources](#)
 - [7.1 References](#)

hama

hama WKM-550 Keyboard and Mouse Set



Product Information

Specifications:

- **Product:** Keyboard and Mouse Set
- **Model Numbers:** 173065, 173066

- **Model:** WKM-550
- **Wireless Connectivity:** 2.4 GHz and Bluetooth
- **Compatibility:** Android, Windows, MacOS, iOS, iPadOS
- **Optical Sensor DPI:** 800, 1200, 1600

Product Usage Instructions

Pairing Modes:

1. A. 2.4 GHz Pairing Mode:

1. Connect the USB-A receiver to your device.
2. Press and hold the pairing button on the keyboard and mouse for 3-5 seconds to enter pairing mode.

2. B. Bluetooth Pairing Mode:

1. Ensure Bluetooth is enabled on your device.
2. Press and hold the Bluetooth pairing button on the keyboard or mouse for 3-5 seconds to enter Bluetooth pairing mode.

Compatibility:

This set is compatible with Android, Windows, MacOS, iOS, and iPadOS devices for seamless connectivity.

Optical Sensor DPI Settings:

Choose from three DPI settings for the optical sensor:

- 800 DPI
- 1200 DPI
- 1600 DPI

AI Assistant:

This product features AI assistant support for enhanced functionality.

Frequently Asked Questions (FAQ):

• **Q: How do I switch between the 2.4 GHz and Bluetooth modes?**

A: To switch between modes, use the designated buttons on the keyboard or mouse corresponding to the desired mode and follow the pairing instructions provided in the manual.

• **Q: Can I use this set with a Chromebook?**

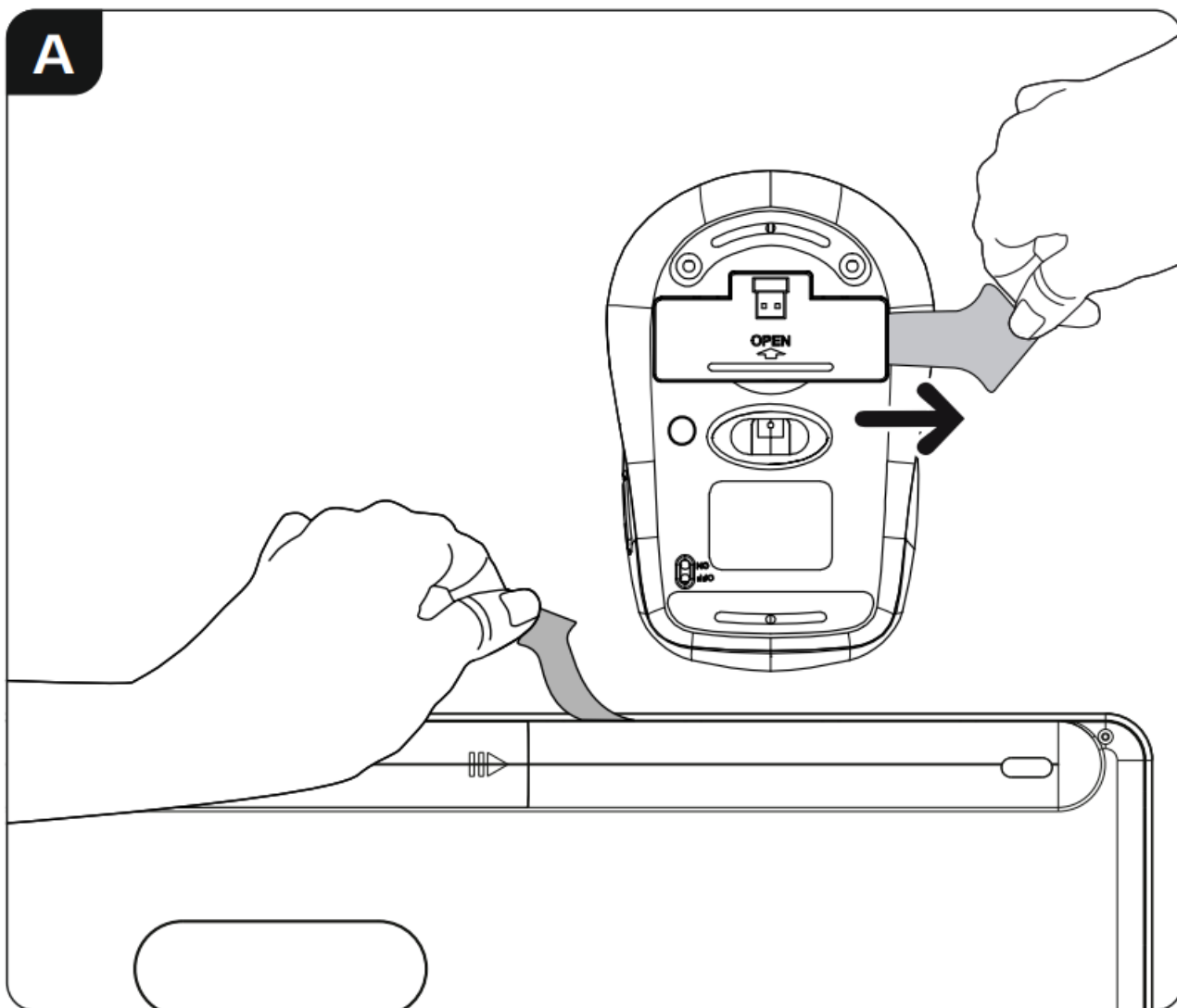
A: This set is not specifically mentioned as compatible with Chromebooks. It is recommended to check compatibility with Chromebook devices before use.

• **Q: Are batteries included in the package?**

A: Please check the product packaging for details on battery inclusion. Batteries may or may not be included depending on the manufacturer's specifications.

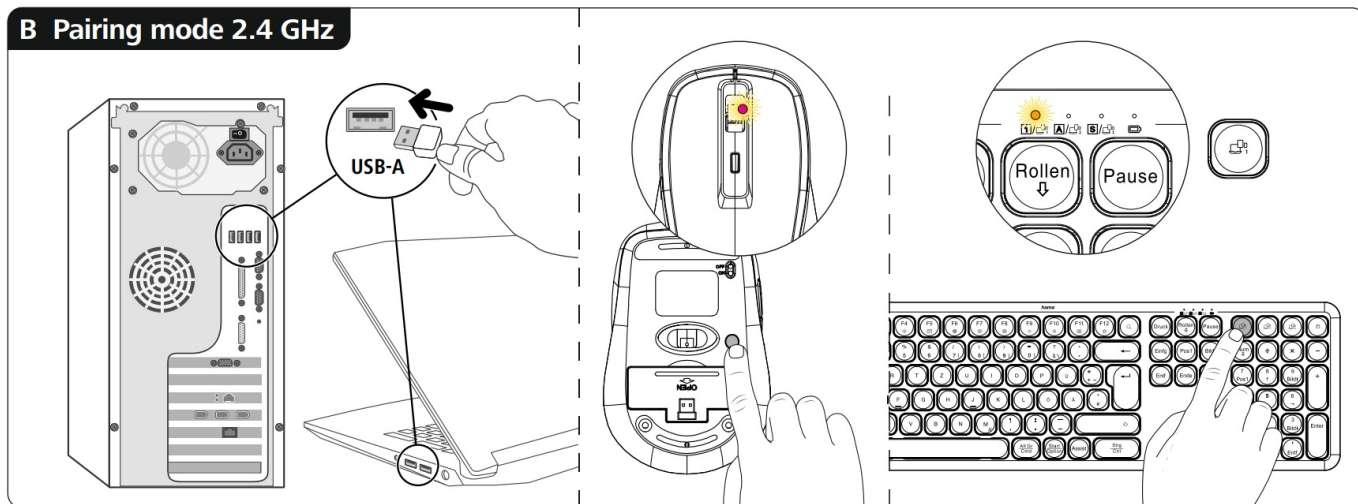
BATTERY REPLACEMENT

A

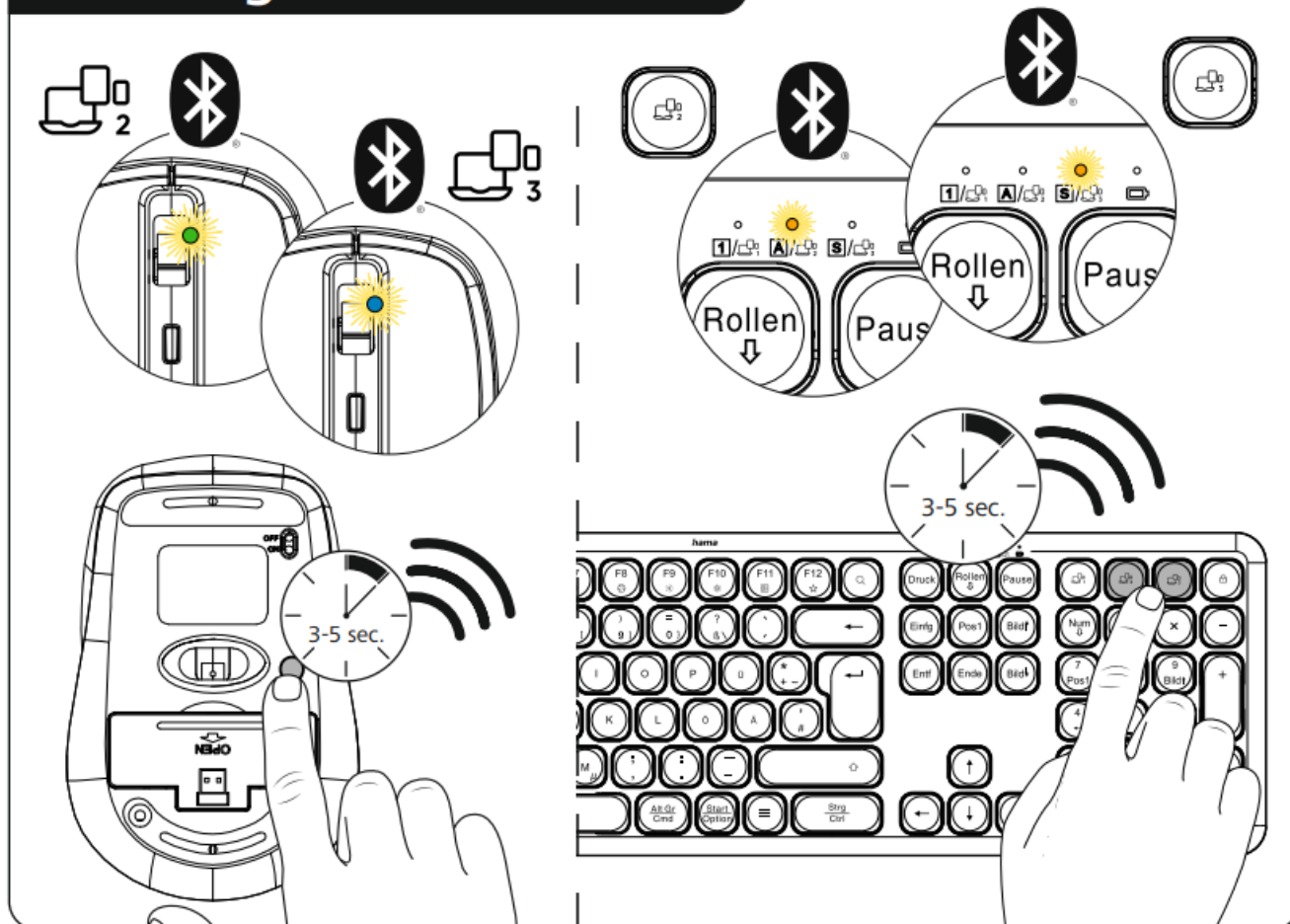


Pairing mode

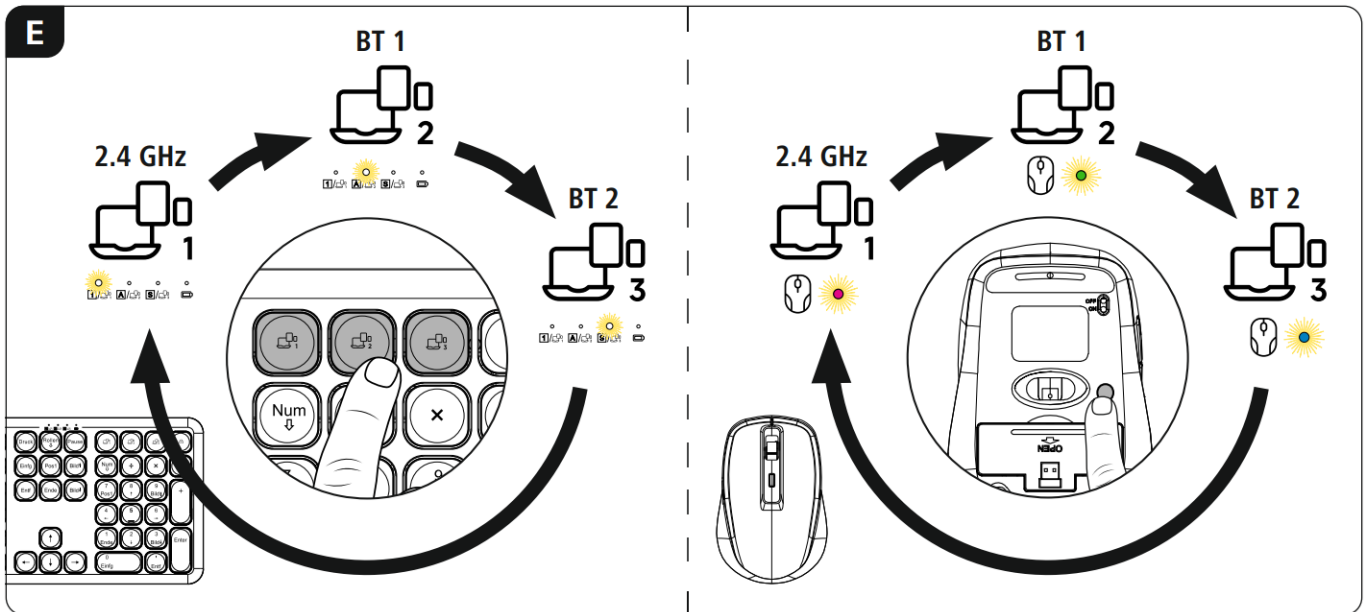
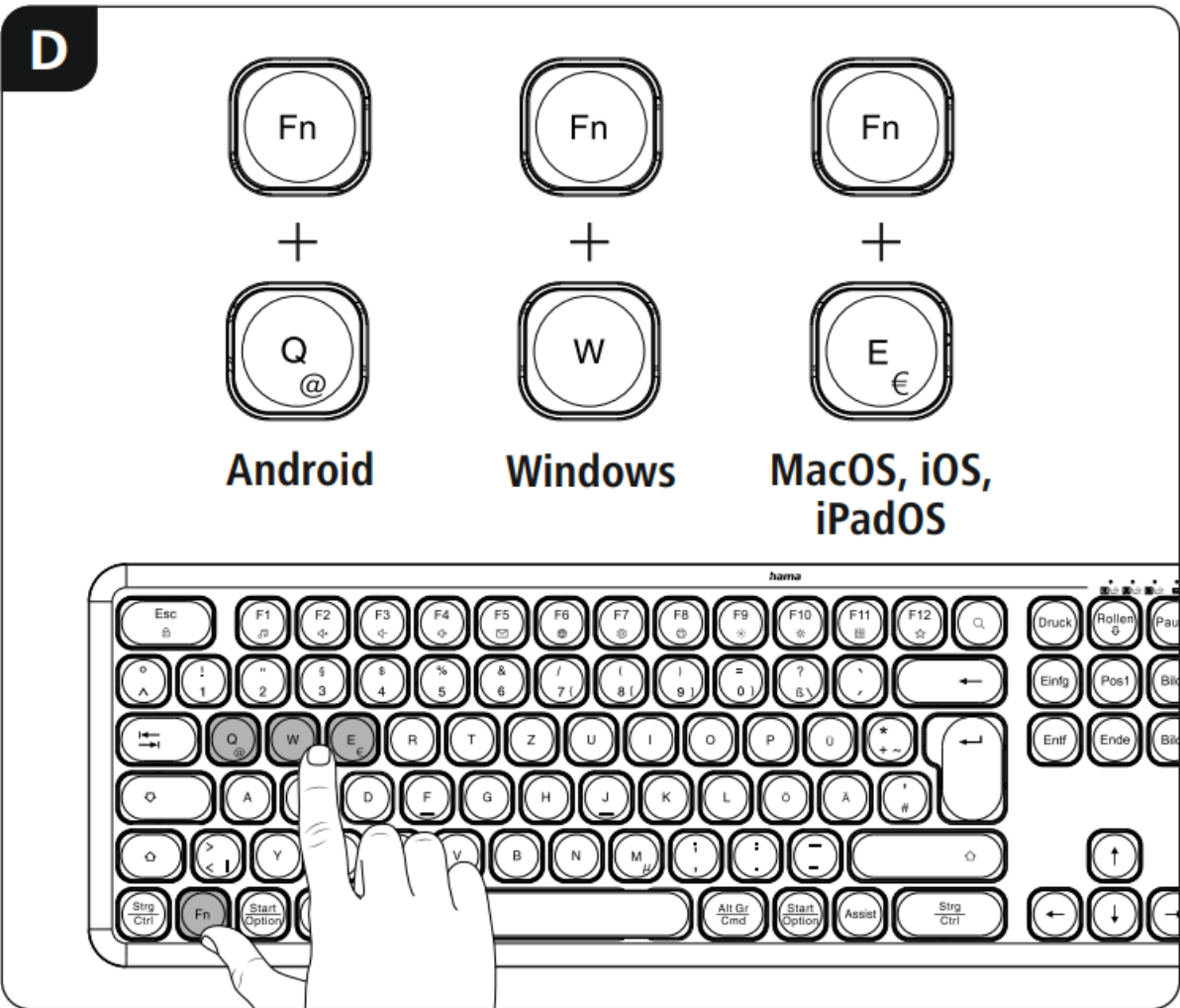
B Pairing mode 2.4 GHz



C Pairing mode Bluetooth



FUNCTION



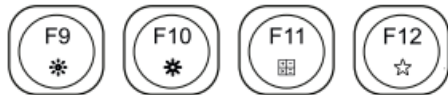
F

Assist = AI assistant

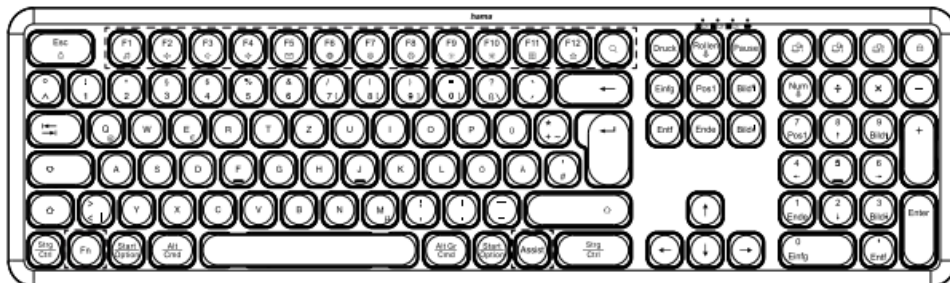
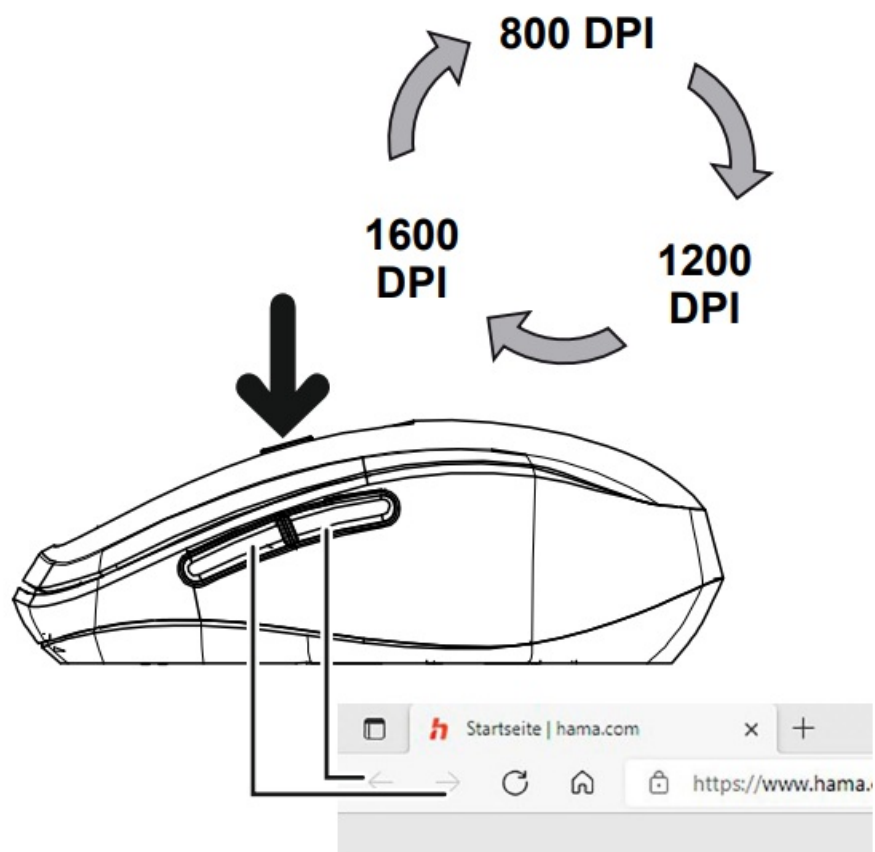
Fn +



= = = = = = = =

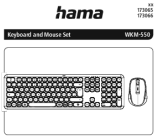


= = = =

**G**

All listed brands are trademarks of the corresponding companies. Errors and omissions excepted, and subject to technical changes. Our general terms of delivery and payment are applied.

Documents / Resources

	<p>hama WKM-550 Keyboard and Mouse Set [pdf] Instruction Manual 173065, 173066, WKM-550, WKM-550 Keyboard and Mouse Set, Keyboard and Mouse Set, Mouse Set, Set</p>
---	---

References

- hama.com
- [Recycling Information hama.com](#)
- [User Manual](#)

Manuals+, Privacy Policy

This website is an independent publication and is neither affiliated with nor endorsed by any of the trademark owners. The "Bluetooth®" word mark and logos are registered trademarks owned by Bluetooth SIG, Inc. The "Wi-Fi®" word mark and logos are registered trademarks owned by the Wi-Fi Alliance. Any use of these marks on this website does not imply any affiliation with or endorsement.