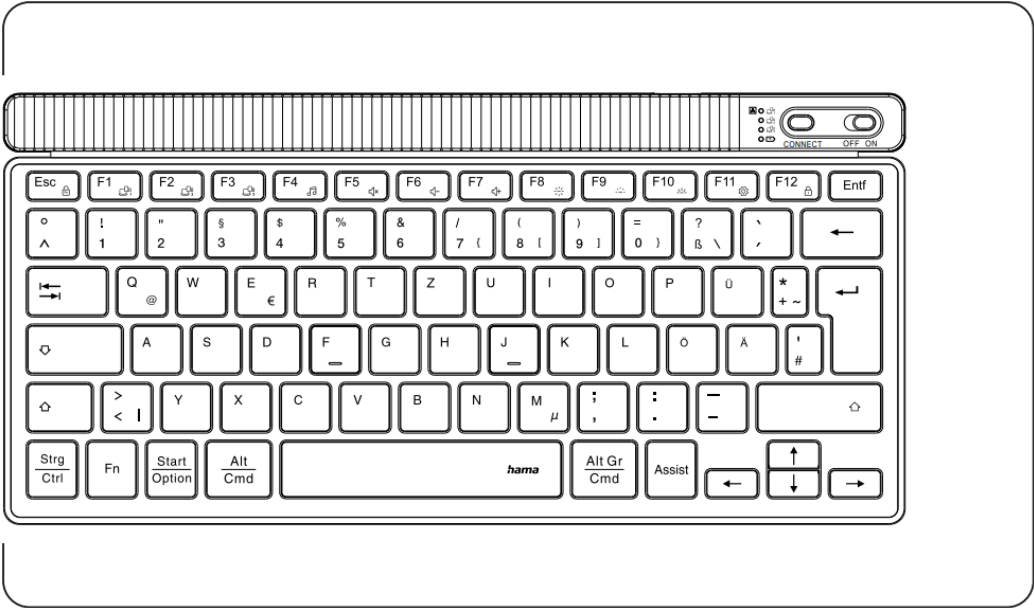




hama WK-700 Multi Device Keyboard Instruction Manual

[Home](#) » [Hama](#) » hama WK-700 Multi Device Keyboard Instruction Manual 

hama Keyboard WK-700



Contents

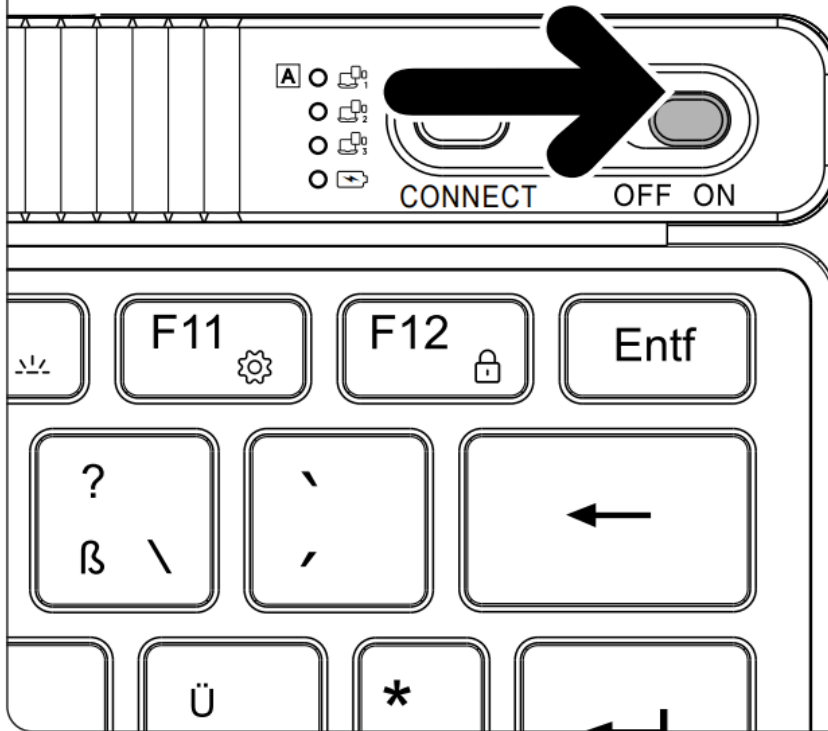
1 WK-700 Multi Device Keyboard

2 Documents / Resources

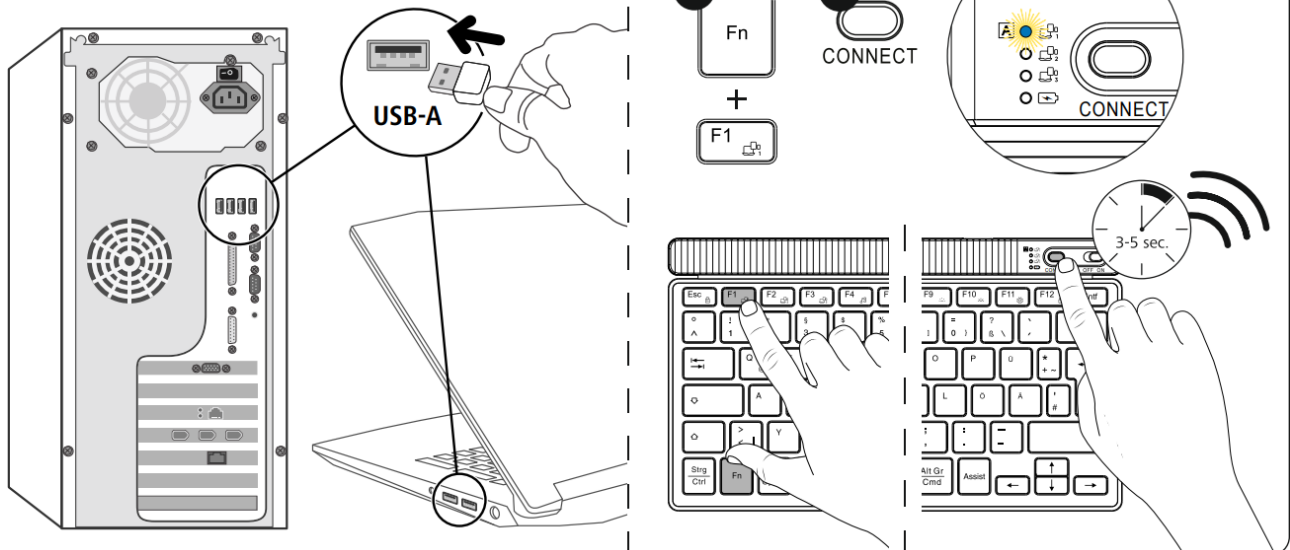
2.1 References

3 Related Posts

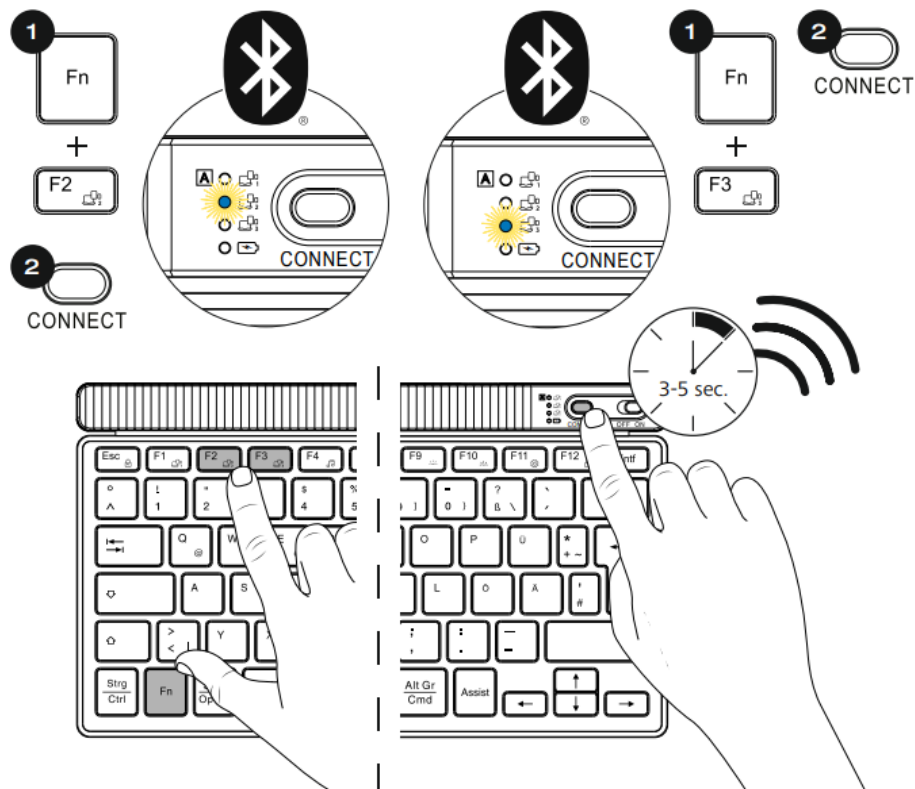
A



B Pairing mode 2.4 GHz



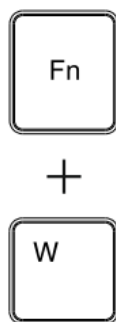
C Pairing mode Bluetooth



D



Android

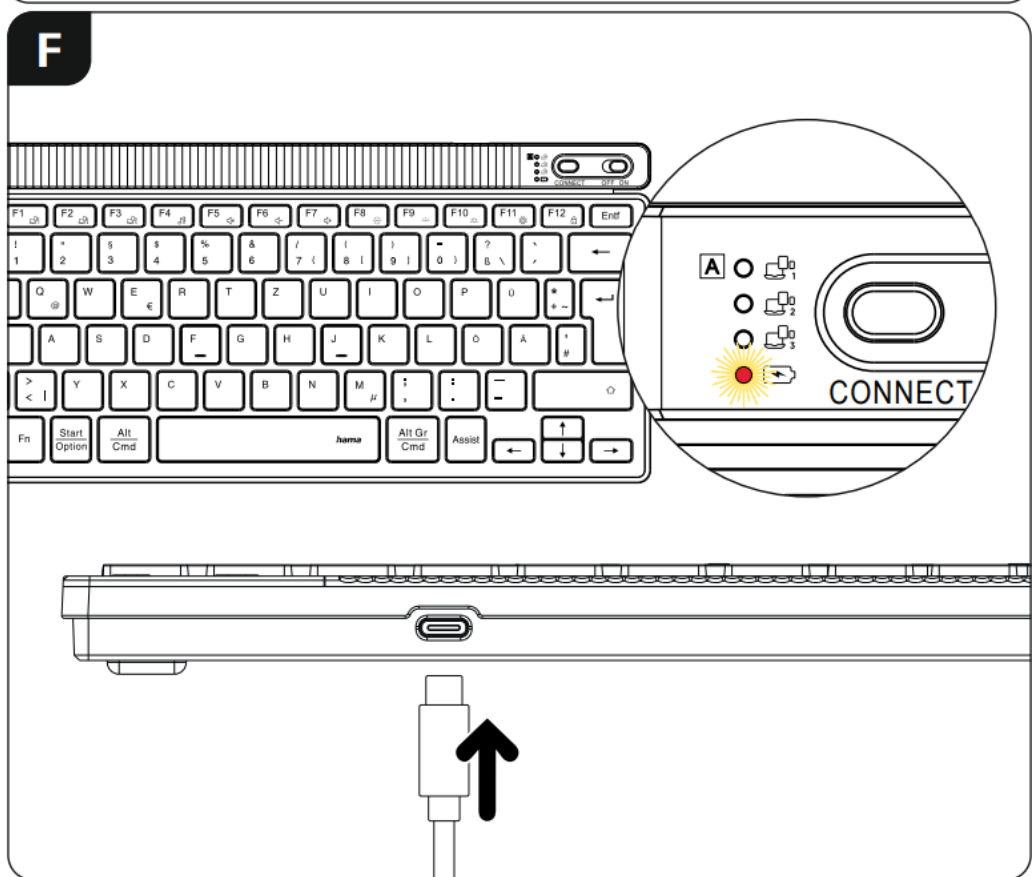
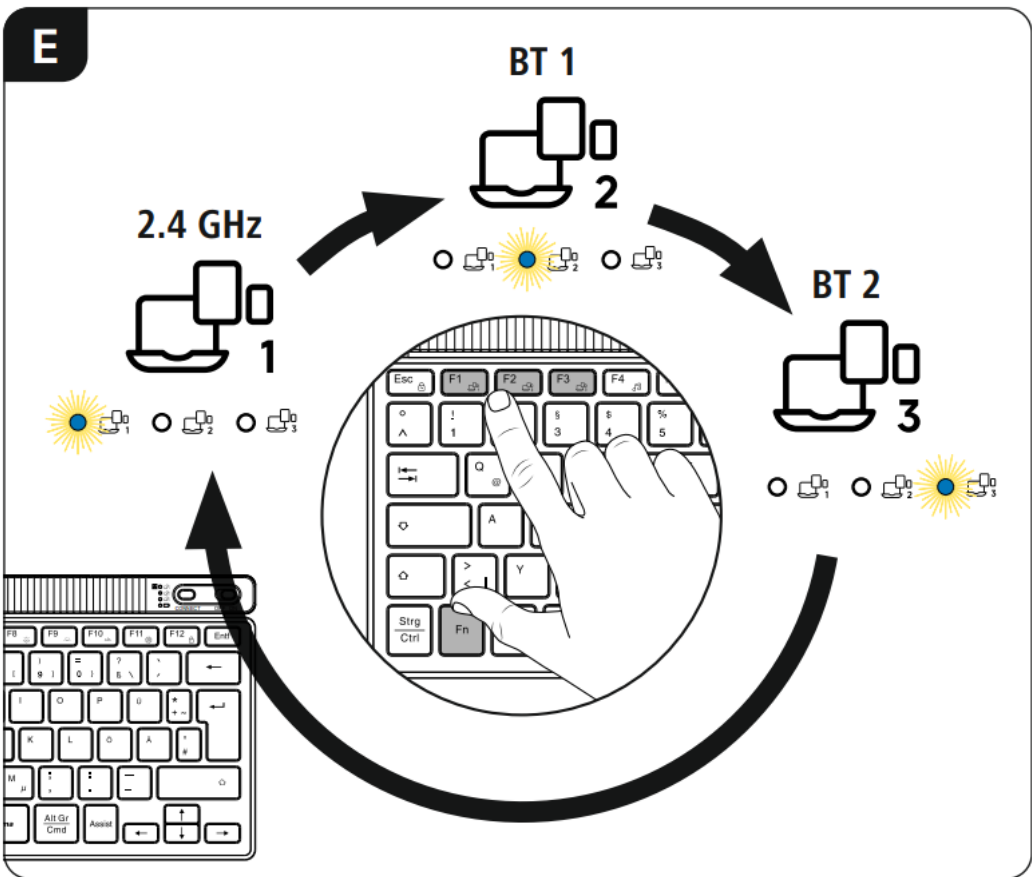


Windows



MacOS, iOS,
iPadOS





G

$$\text{Fn} + \text{F8} = \text{Lightbulb ON} / \text{Lightbulb OFF} \text{ (ON/OFF)}$$

$$\text{Fn} + \text{F10} = \text{Lightbulb} + \text{(brighter)}$$

$$\text{Fn} + \text{F9} = \text{Lightbulb} - \text{(darker)}$$



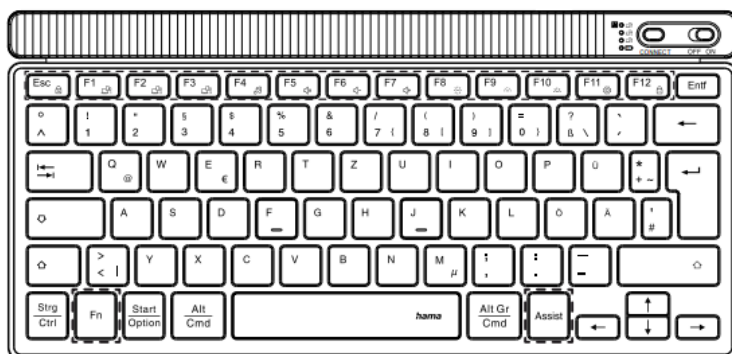
H

Assist = AI assistant

Fn +

Esc = Lock = Fn
F1 = 1 = 1
F2 = 2 = 2
F3 = 3 = 3
F4 = 4 = 4
F5 = 5 = 5
F6 = 6 = 6
F7 = 7 = 7
F8 = 8 = 8

F9 = 9 = 9
F10 = 10 = 10
F11 = 11 = 11
F12 = 12 = 12



All listed brands are trademarks of the corresponding companies. Errors and omissions excepted, and subject to technical changes. Our general terms of delivery and payment are applied.

hama

Hama GmbH & CoKG
86652 Monheim/Germany

www.hama.com



www.hama.com/nep

CE xx173067/03.24

Documents / Resources



[hama WK-700 Multi Device Keyboard](#) [pdf] Instruction Manual
WK-700, WK-700 Multi Device Keyboard, Multi Device Keyboard, Device Keyboard, Keyboard

References

- hama.com
- [h Recycling Information hama.com](#)
- [User Manual](#)

Manuals+ Privacy Policy

This website is an independent publication and is neither affiliated with nor endorsed by any of the trademark owners. The "Bluetooth®" word mark and logos are registered trademarks owned by Bluetooth SIG, Inc. The "Wi-Fi®" word mark and logos are registered trademarks owned by the Wi-Fi Alliance. Any use of these marks on this website does not imply any affiliation with or endorsement.