



## hama USB-C Docking Station Instruction Manual

[Home](#) » [Hama](#) » hama USB-C Docking Station Instruction Manual 

### Contents

- [1 hama USB-C Docking Station](#)
- [2 Package Contents](#)
- [3 Safety Notes](#)
- [4 Startup and Operation](#)
- [5 Warranty Disclaimer](#)
- [6 Technical Data](#)
- [7 Documents / Resources](#)
- [8 Related Posts](#)

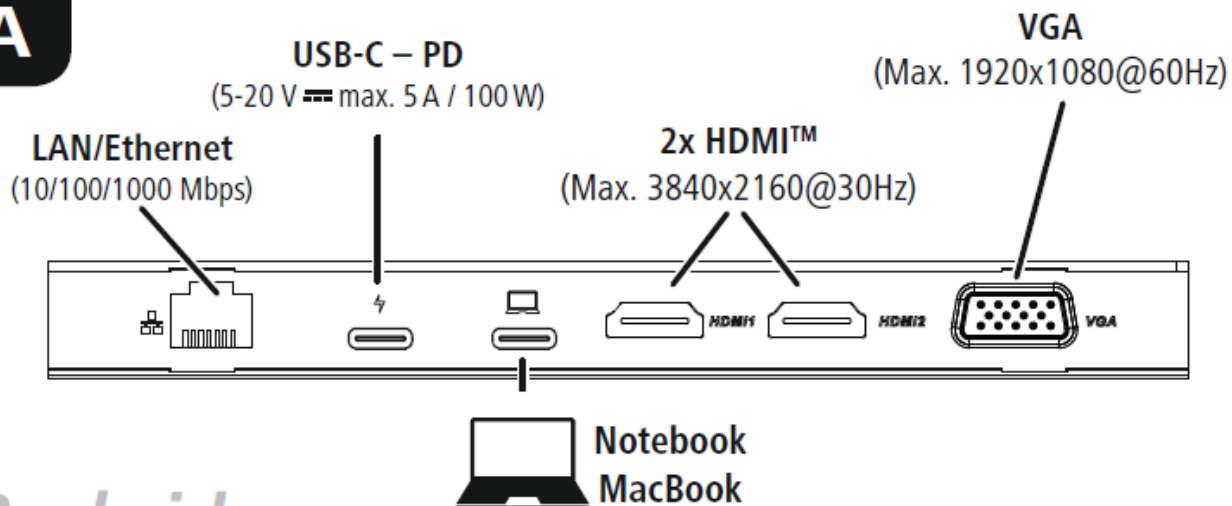
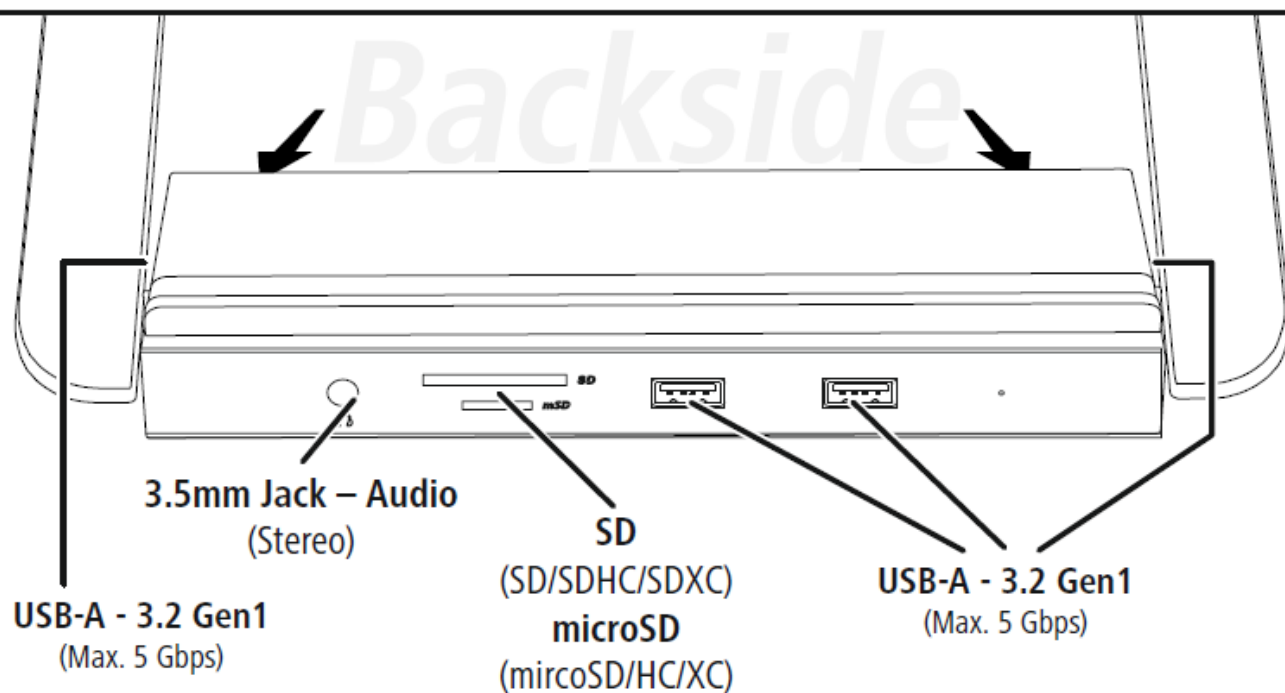
***hama***®

**hama USB-C Docking Station**

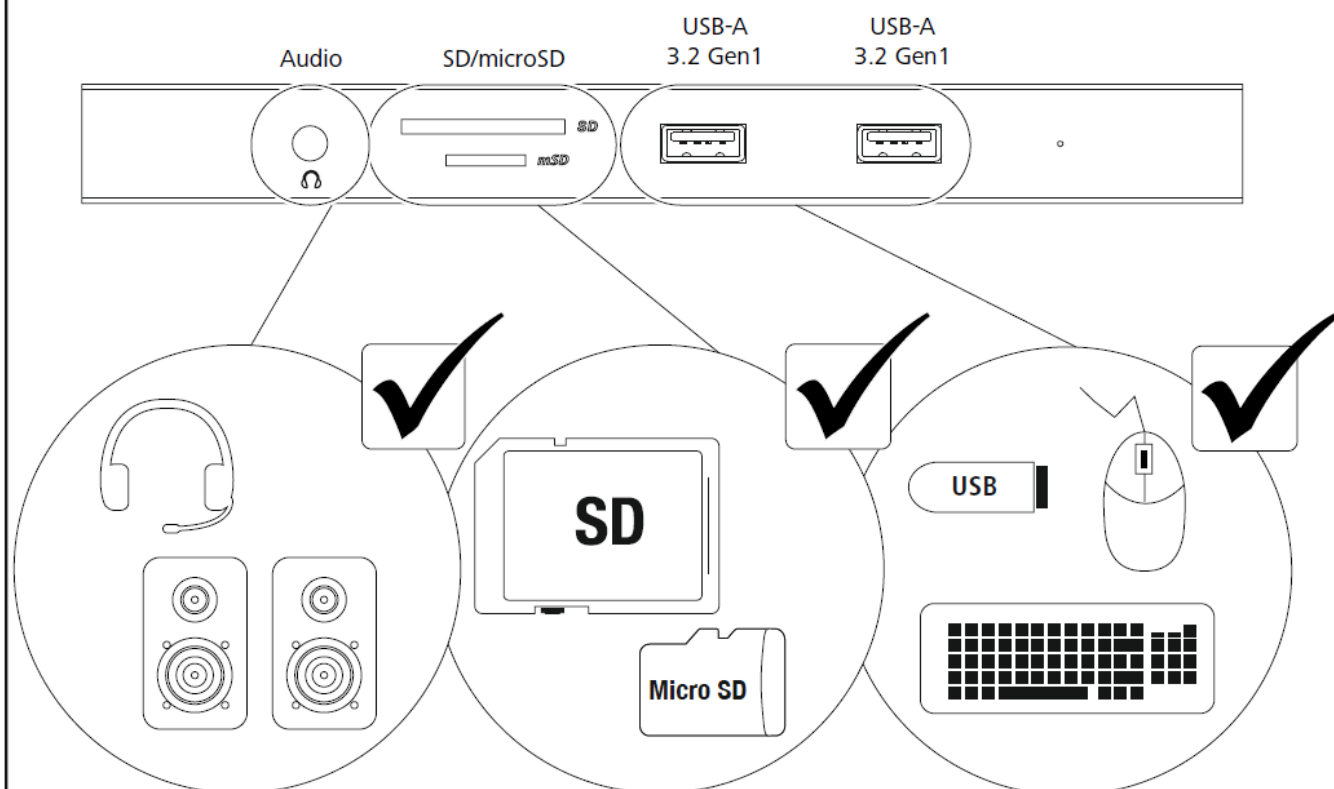


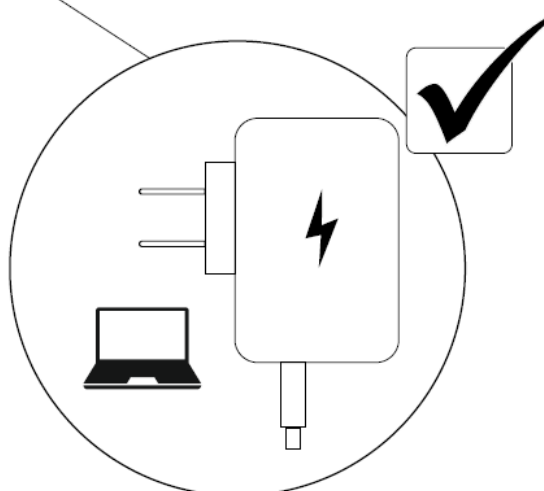
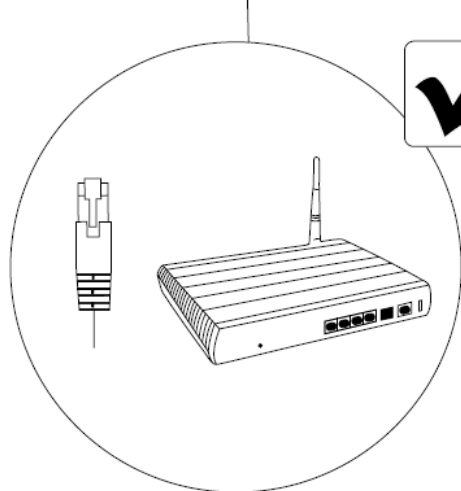
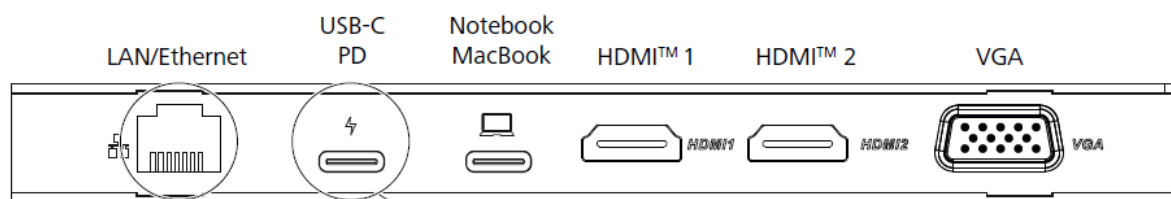
All listed brands are trademarks of the corresponding companies. Errors and omissions excepted, and subject to technical changes. Our general terms of delivery and payment are applied.

#### **BACK AND FRONT SIDE**

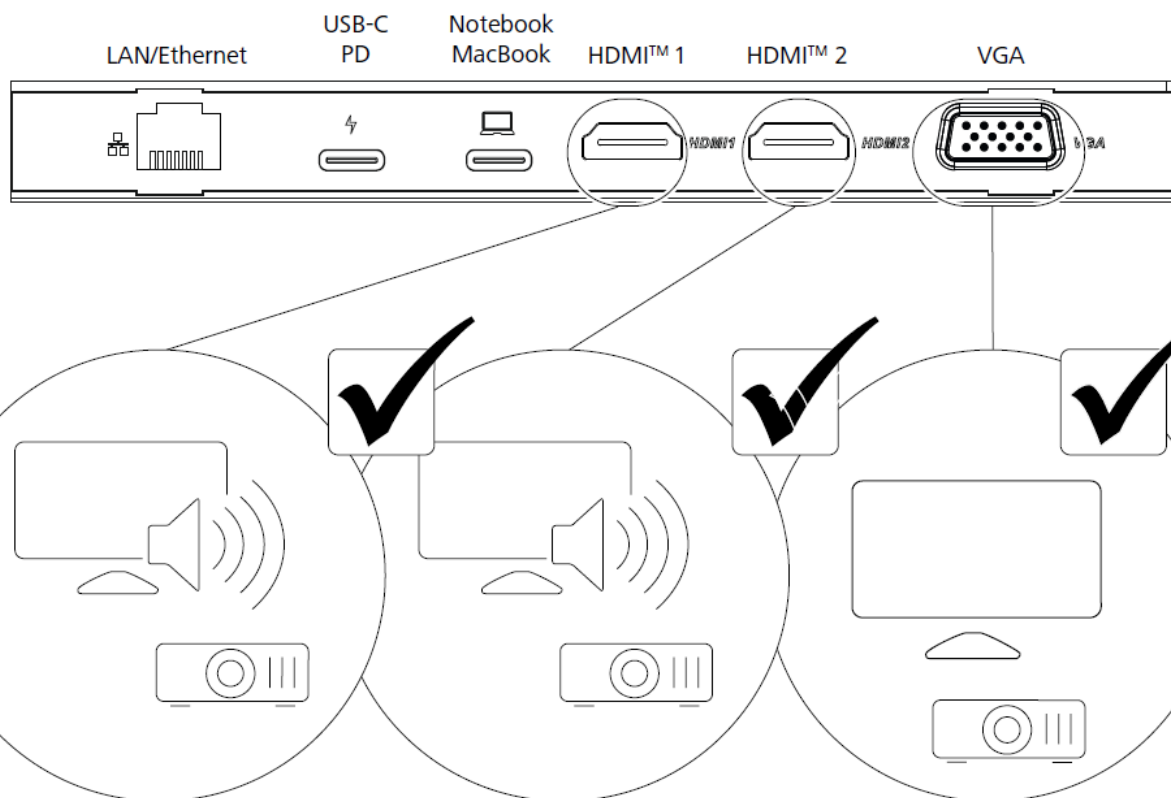
**A***Backside**Frontside*

**B**





# D



## The maximum supported Resolution

	VGA	HDMI 1	HDMI 2
Single Port Connected	1080P/60Hz		
		2160P/30Hz	
			2160P/30Hz
Dual Ports Connected	1080P/60Hz	1080P/60Hz	
	1080P/60Hz		1080P/60Hz
		1080P/60Hz	1080P/60Hz
Triple Ports Connected	1080P/60Hz	1080P/60Hz	1080P/60Hz

## Package Contents

- USB-C Docking Station
- USB-C cable
- These operating instructions

## Safety Notes

- Do not attempt to service or repair the product yourself. Leave any and all service work to qualified experts.
- Do not open the device or continue to operate it if it becomes damaged.
- Do not operate the product outside the power limits given in the specifications.
- Do not modify the product in any way. Doing so voids the warranty.
- Keep this product, as all electrical products, out of the reach of children! Use the product for its intended purpose only.
- Protect the product from dirt, moisture and overheating, and only use it in a dry environment.
- The product is intended for indoor use only.
- Do not use the product in the immediate vicinity of heaters or other heat sources or in direct sunlight.
- Do not use the product in moist environments and avoid splashes.
- Do not use the product in areas where the use of electronic devices is not permitted.
- Do not drop the product and do not expose it to any major shocks.
- Dispose of packaging material immediately according to locally applicable regulations.

## Warning

- Find out the maximum output current capacity of the USB port on your device. To do this, consult the operating instructions or ask the manufacturer.
- Common values are 500 mA for USB-A 2.0, 900 mA for USB-A 3.0, and up to 3000 mA for USB-C.
- Ensure that the cumulative current draw of all USB devices connected to the hub/multiport adaptor does not exceed this value.

## Note

- To be able to use the charging function, the device must support Power Delivery (PD) or Thunderbolt-3/4.
- To be able to use the VGA or HDMI™ function, the device must support DisplayPort Alternate Mode or Thunderbolt-3/4.
- VGA and HDMI™, or HDMI™ and HDMI™: MST (Multi-Stream Transport) support for simultaneous use of two monitors displaying different contents.
- Passive VGA/HDMI™ cables (without chipset/signal converter) must be used for MST.
- The MST function is dependent on the graphics card, operating system and monitor used. For more information, consult the operating instructions or contact the manufacturer.



## Startup and Operation

- Switch on your computer and boot the system.
- Connect the product to a free USB port on your computer.
- You do not have to install drivers; the computer will automatically recognise the product.
- If necessary, follow the instructions for your operating system.
- In order to use your devices, plug them into the product one after the other.

## Warranty Disclaimer


Hama GmbH & Co KG assumes no liability and provides no warranty for damage resulting from improper installation/mounting, improper use of the product or from failure to observe the operating instructions and/or safety notes.

Technical Data

	
Operating voltage / current consumption	5 – 20 V  max. 5 A
Compatibility	USB-C port
System requirements	Windows 11 / 10 / 8 / 7 Mac OS 10.8 ≥
USB specification	USB 3.2 Gen1

**Note:** If there is interference or the product no longer responds, unplug the product, wait a few seconds and then plug it in again.

Documents / Resources

	<a href="#">hama USB-C Docking Station</a> [pdf] Instruction Manual hama, USB-C, Docking, Station
---	--