



hama 173032 6-Button Mouse Instruction Manual

[Home](#) » [Hama](#) » hama 173032 6-Button Mouse Instruction Manual 

Contents

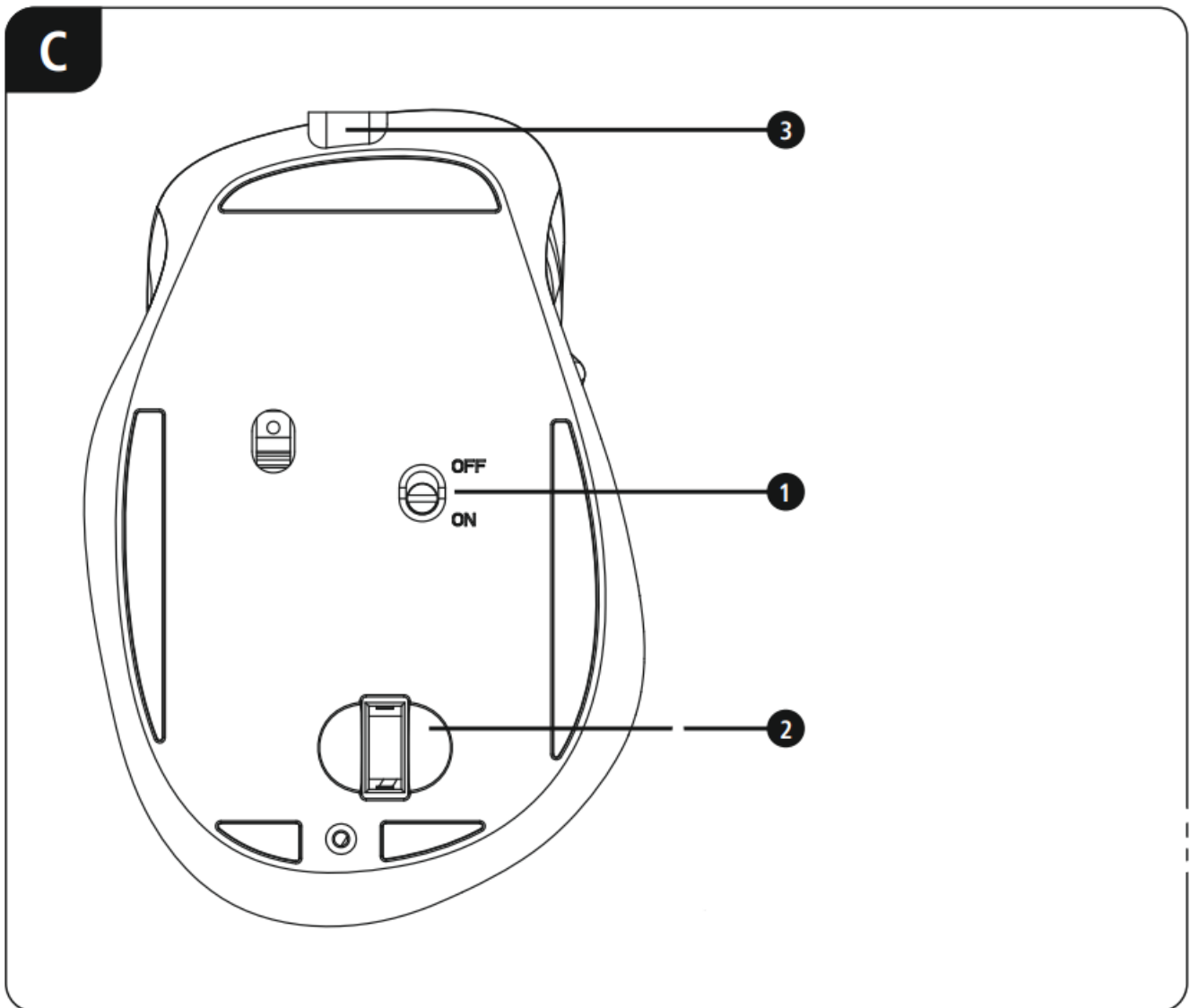
- [1 hama 173032 6-Button Mouse](#)
- [2 OVERVIEW](#)
- [3 CONNECT](#)
- [4 Safety Notes](#)
- [5 Battery charging](#)
- [6 Documents / Resources](#)
- [7 Related Posts](#)

hama

hama 173032 6-Button Mouse



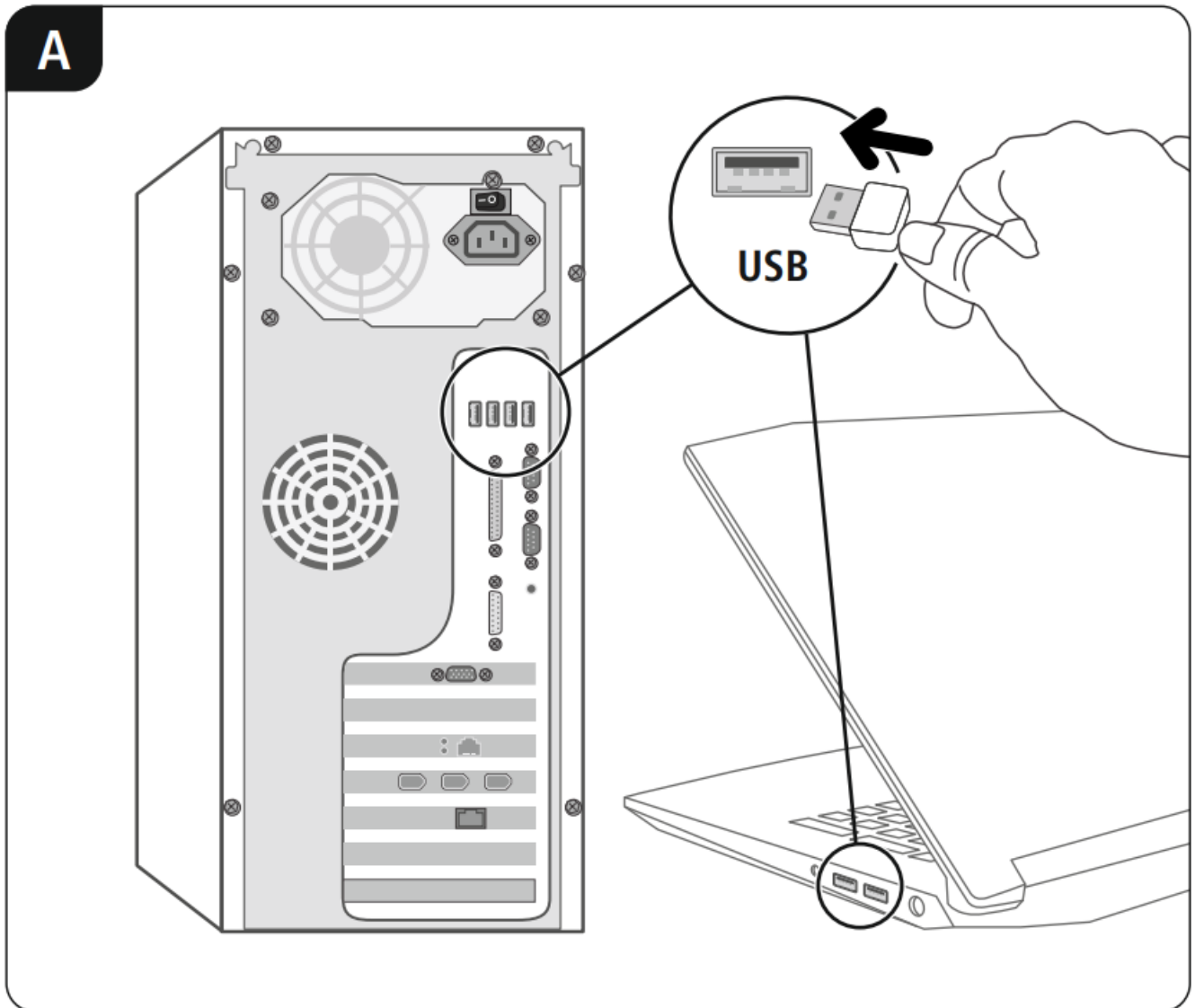
OVERVIEW

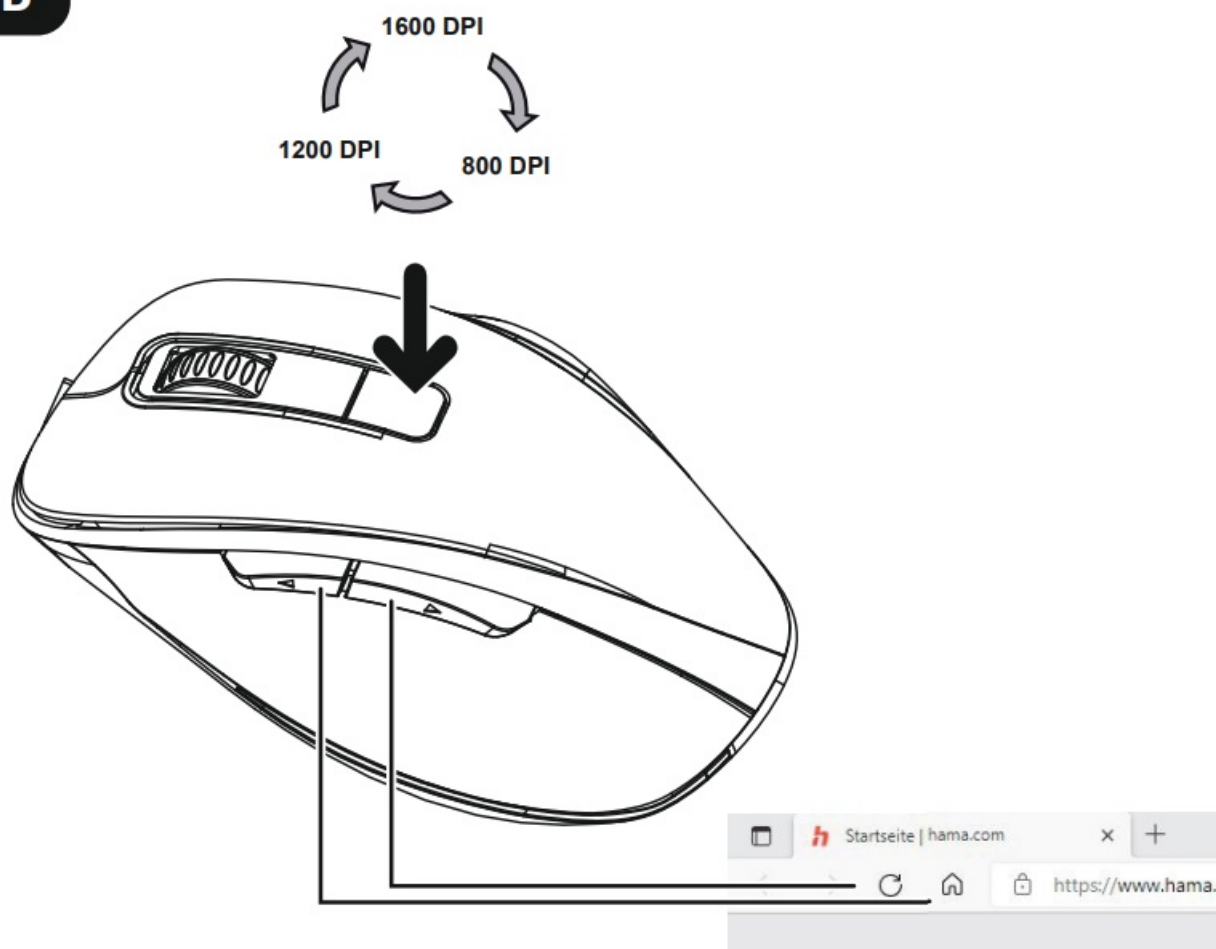


1. ON/OFF Switch
2. USB-Receiver Storage

3. USB-C-Charging Plug

CONNECT



B

Operating instruction

Read the warnings and safety instructions on the enclosed note before using the product.

Safety Notes

- Use the item only in moderate climatic conditions.
- The battery is integrated and cannot be removed.
- Do not throw the battery or the product into fire.
- Do not tamper with or damage/heat/disassemble the batteries/ rechargeable batteries

Battery charging

- The product contains a rechargeable battery.
- Charge the mouse fully before using it for the first time.
- If the Power LED is flashing or if there is no reaction/connection after switching it on, the mouse needs to be charged.
- Connect the supplied USB charging cable to the USB-C connection (3) on the mouse.
- Connect the free plug on the USB charging cable to a suitable USB charger. To do this, consult the operating

instructions for the USB charger you are using.

- The status LED now lights up solid blue and the mouse is charging.
- Once the charging process is complete, the status LED goes out.
- The actual battery life will vary depending on how you use the device, the settings and the environmental conditions (batteries have a limited life).
- Only use the USB charging cable included for this product.

Warning – Battery

- Only use suitable charging devices or USB connections for charging.
- As a rule, do not charge devices or USB connections that are defective and do not try to repair them yourself.
- Do not overcharge the product or allow the battery to completely discharge.
- Avoid storing, charging or using the device in extreme temperatures and extremely low atmospheric pressure (for example, at high altitudes).
- When stored over a long period of time, batteries should be charged regularly (at least every three months).

Documents / Resources



[hama 173032 6-Button Mouse](#) [pdf] Instruction Manual

173032, 173033, 173034, 173035, 173036, 173032 6-Button Mouse, 173032, 6-Button Mouse, Mouse