



## hama 139915 X-Pointer Wireless Laser Presenter Instruction Manual

[Home](#) » [Hama](#) » hama 139915 X-Pointer Wireless Laser Presenter Instruction Manual 

### hama 139915 X-Pointer Wireless Laser Presenter Instruction Manual



Thank you for choosing a Hama product.

Take your time and read the following instructions and information completely. Please keep these instructions in a safe place for future reference. If you sell the device, please pass these operating instructions on to the new owner.

## Contents

- [1 Explanation of Warning Symbols and Notes](#)
- [2 Package Contents](#)
- [3 Safety Notes](#)
- [4 Operation](#)
  - [4.1 Controls](#)
- [5 Care and Maintenance](#)
- [6 Warranty Disclaimer](#)
- [7 Technical Data](#)
- [8 Declaration of Conformity](#)
- [9 Documents / Resources](#)
  - [9.1 References](#)
- [10 Related Posts](#)

## Explanation of Warning Symbols and Notes



### Warning

This symbol is used to indicate safety instructions or to draw your attention to specific hazards and risks.



### Note

This symbol is used to indicate additional information or important notes.

## Package Contents

- 'X-Pointer' laser presenter
- 2 AAA batteries
- Set with warning labels
- These operating instructions

## Safety Notes

- The product is intended for private, non-commercial use only.
- Protect the product from dirt, moisture and overheating, and only use it in a dry environment.
- Do not drop the product and do not expose it to any major shocks.
- Do not operate the product outside the power limits given in the specifications.
- Do not continue to operate the device if it becomes visibly damaged.
- Children are not permitted to play with the device.
- Dispose of packaging material immediately according to locally applicable regulations.
- Do not modify the product in any way. Doing so voids the warranty.



### Warning – Batteries

- When inserting batteries, note the correct polarity (+ and – markings) and insert the batteries accordingly.  
Failure to do so could result in the batteries leaking or exploding.
- Only use batteries (or rechargeable batteries) that match the specified type.

- Always choose the battery size and grade that best suits the intended purpose. Keep these operating instructions in a safe place for future reference, as they provide information about choosing the right battery.
- Replace all the batteries in a set at the same time.
- Do not short-circuit batteries.
- Do not charge batteries.
- Do not throw batteries in a fire.
- Keep batteries out of the reach of children.
- Do not allow children to change batteries without supervision.
- Remove the batteries from products that are not being used for an extended period.
- Immediately remove and dispose of dead batteries from the product.
- Before you insert the batteries, clean the battery contacts and the polar contacts.

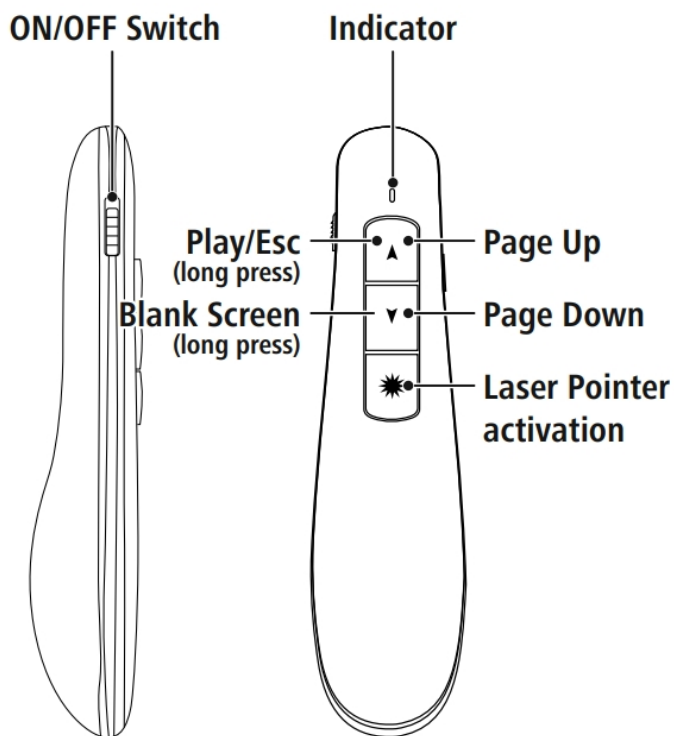


### **Warning – Laser**

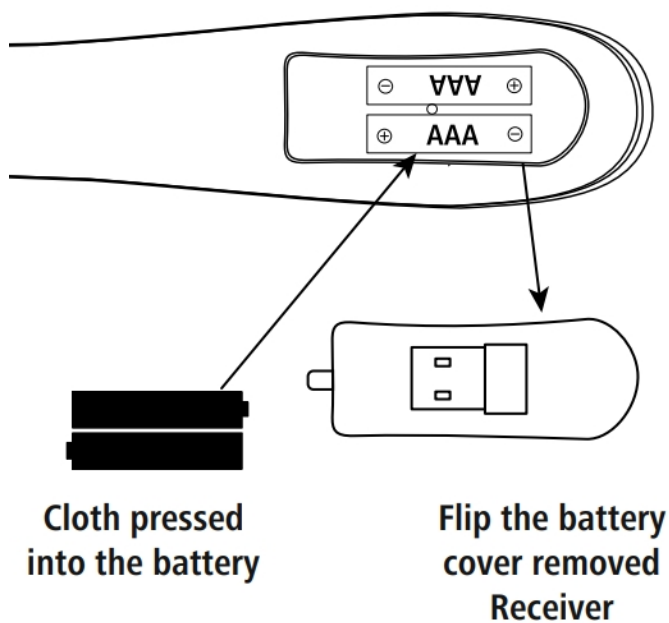
- Do not look directly at the laser beam! Close your eyes and turn your head away if your eyes meet the laser beam.
- Do not shine light at persons using binoculars or telescopes!
- Do not look directly at the laser beam! Do not look directly at the laser beam using optical instruments!
- This product contains a class 2 laser in accordance with EN60825-1:2014.

## **Operation**

### **Inserting the battery (Fig. 1)**

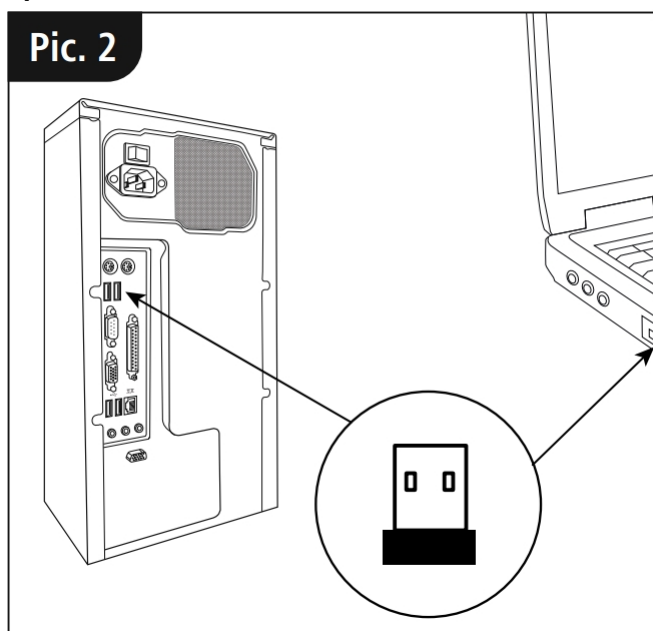



### **Battery and receiver operation**



- Use only AAA batteries (alkaline / zinc carbon).
- To insert or change the battery/batteries, insert the AAA battery/batteries with the correct polarity into the battery compartment.

## Operation



- Insert the USB receiver into an unused USB port on your PC.
- Press the laser button  to activate the built-in laser.

## Controls

## Care and Maintenance

Only clean this product with a slightly damp, lint-free cloth and do not use aggressive cleaning agents. Make sure that water does not get into the product.

## Warranty Disclaimer

Hama GmbH & Co KG assumes no liability and provides no warranty for damage resulting from improper installation/mounting, improper use of the product or from failure to observe the operating instructions and/ or safety notes.

## Technical Data

- **Connection:** 2.4 Ghz
- **Operating range:** < 12 m
- **Laser output power:** <1mW
- **Connection:** USB Type-A
- **Power supply:** 2 AAA batteries
- **Size:** 120 x 30 x 22 mm
- **Weight:** Approx. 40g
- **System requirements:** Windows 11/10/8.1/8/7/ Vista/XP, MAC OS, Linux

## Declaration of Conformity



Hereby, Hama GmbH & Co KG declares that the radio equipment type [00139915] is in compliance with Directive 2014/53/EU. The full text of the EU declaration of conformity is available at the following internet address:

[www.hama.com](http://www.hama.com)->00139915 ->Downloads.

- **Frequency band(s):** 2403 – 2447 MHz
- **Maximum radio-frequency power transmitted:** -3.88 dBm e.i.r.p

**Hama GmbH & Co KG**  
86652 Monheim/ Germany

### Service & Support



[www.hama.com](http://www.hama.com)

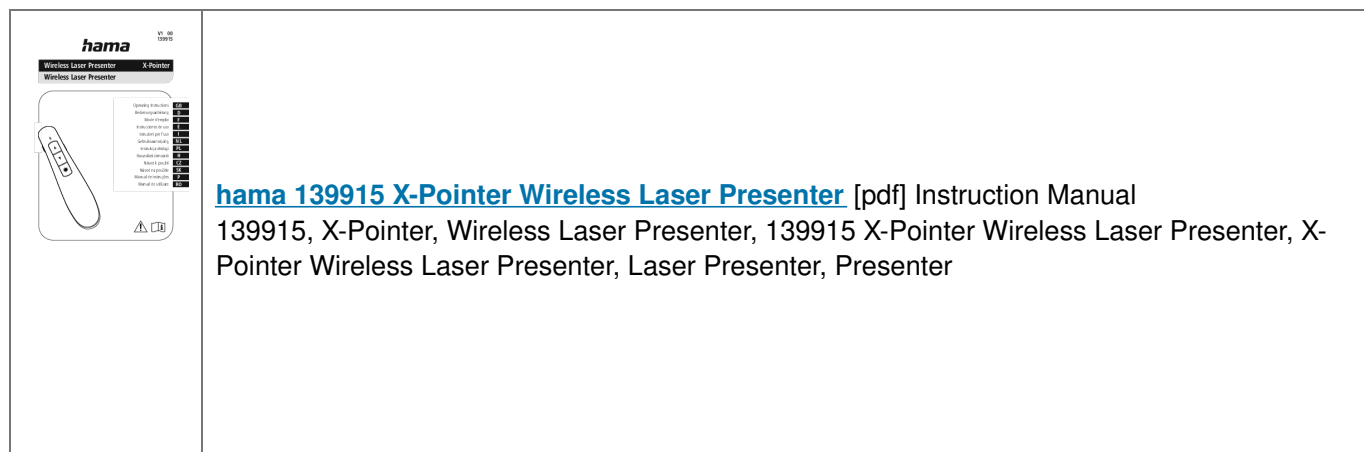


+49 9091 502-0

All listed brands are trademarks of the corresponding companies. Errors and omissions excepted, and subject to technical changes. Our general terms of delivery and payment are applied.

# ***hama***

## Documents / Resources



## References

- [hama.com](https://hama.com)
- [Recycling Information hama.com](https://hama.com/recycling-information)