



## hama 00188230 Mobile Bluetooth Speaker User Manual

[Home](#) » [Hama](#) » hama 00188230 Mobile Bluetooth Speaker User Manual 

### Contents

- [1 hama 00188230 Mobile Bluetooth Speaker](#)
- [2 WHAT IN THE BOX](#)
- [3 POWER](#)
- [4 BUTTON USING](#)
- [5 BLUETOOTH](#)
- [6 CONNECTION](#)
- [7 BATTERY](#)
- [8 WATER PROOF](#)
- [9 MORE INFORMATION](#)
- [10 Documents / Resources](#)
- [11 Related Posts](#)

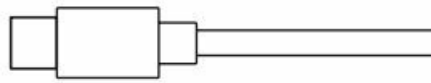


**hama 00188230 Mobile Bluetooth Speaker**

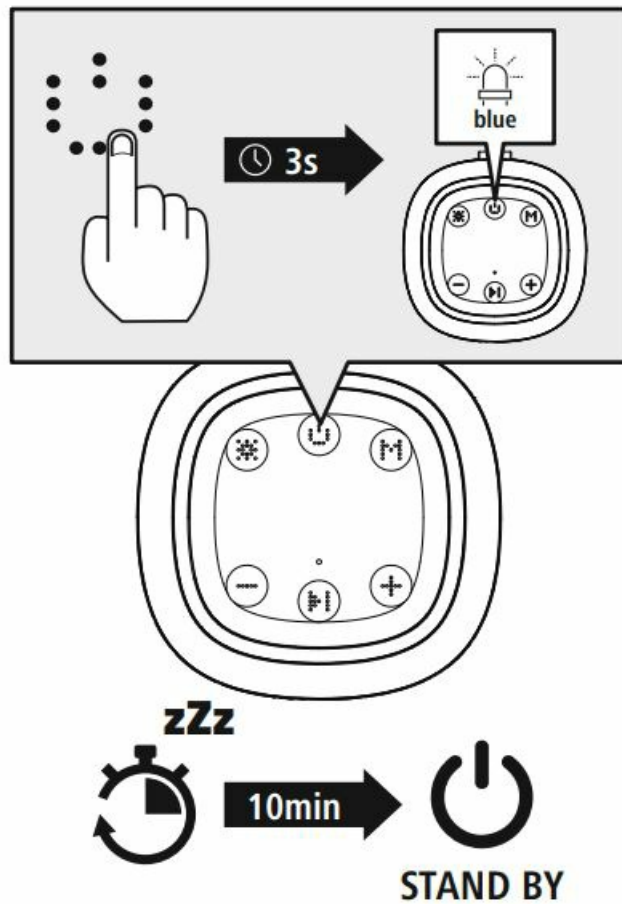


- Read the warnings and safety instructions on the enclosed note before using the product.

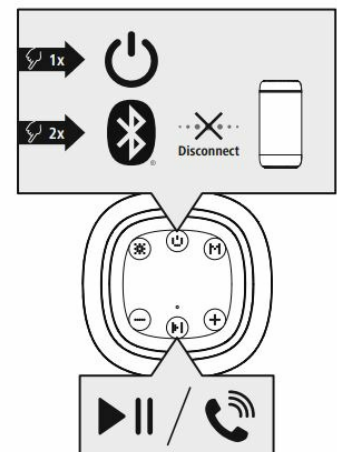
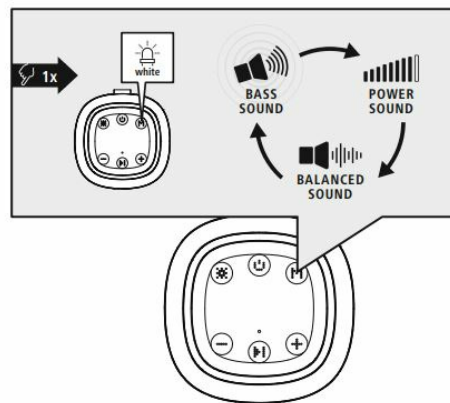
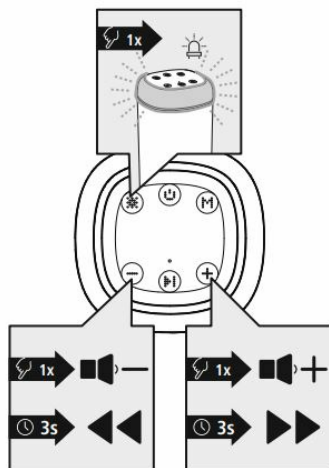
## **WHAT IN THE BOX**

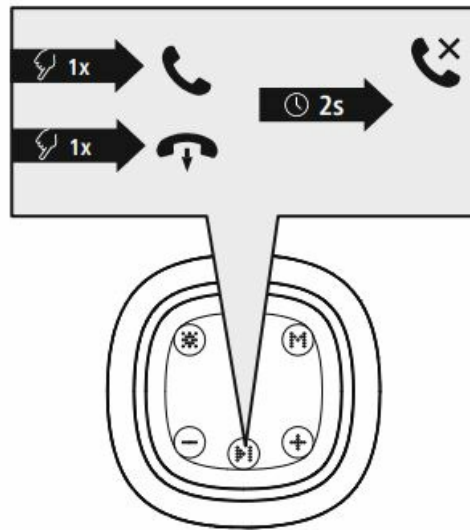


## POWER

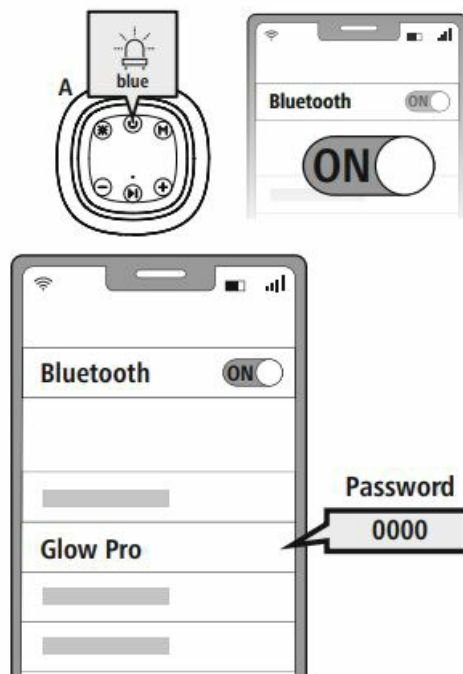


## BUTTON USING

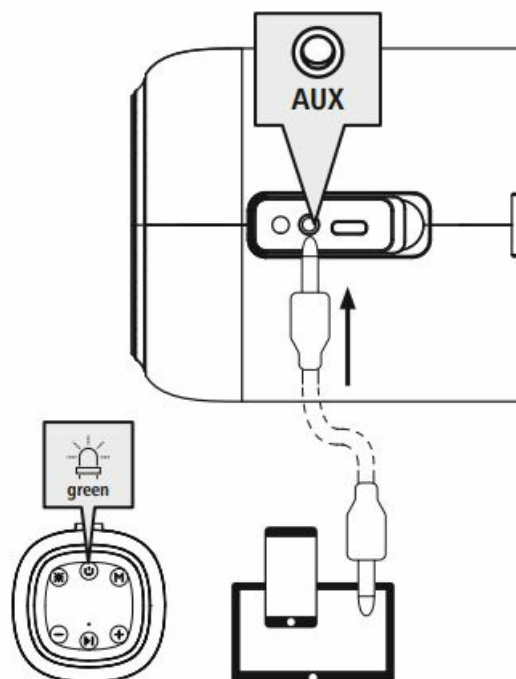




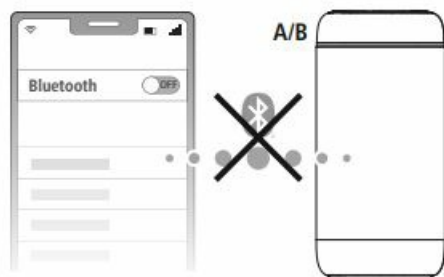
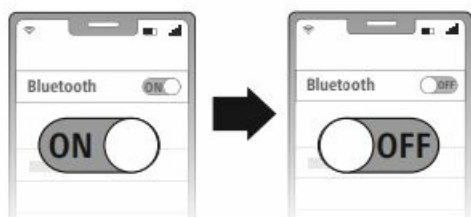
## BLUETOOTH



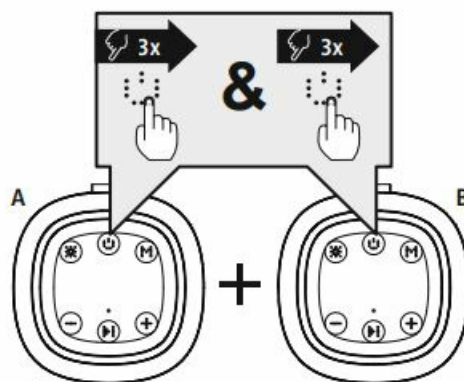
## CONNECTION



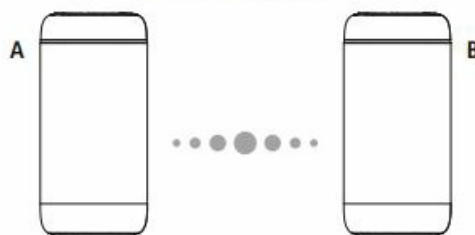
### 1 DO NOT CONNECT ! SMARTPHONE AND SPEAKER



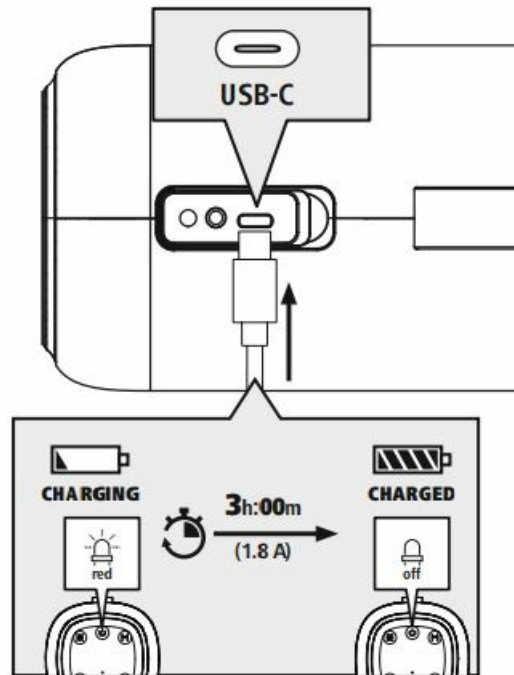
### 2



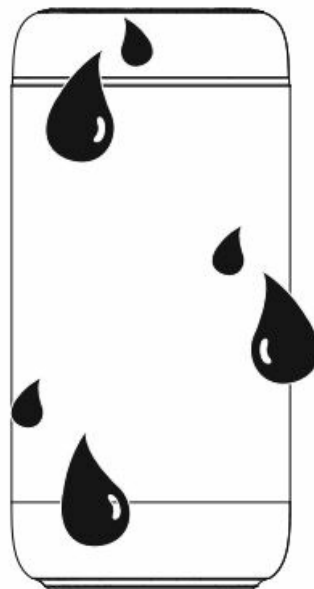
### A + B CONNECT !



## BATTERY



## WATER PROOF



## MORE INFORMATION




- [www.hama.com](http://www.hama.com)
- 00188230
- Downloads
- <https://www.hama.com/00188230>

## Service & Support

- [www.hama.com](http://www.hama.com)
- +49 9091 502-0

“The Bluetooth® word mark and logos are registered trademarks owned by the Bluetooth SIG, Inc. and any use of such marks by Hama GmbH & Co KG is under license. Other trademarks and trade names are those of their respective owners.” All listed brands are trademarks of the corresponding companies. Errors and omissions excepted, and subject to technical changes. Our general terms of delivery and payment are applied.

## Documents / Resources

	<a href="#">hama 00188230 Mobile Bluetooth Speaker</a> [pdf] User Manual 00188230 Mobile Bluetooth Speaker, 00188230, Mobile Bluetooth Speaker, Bluetooth Speaker
---	--