

# hama 00185815 Key Finder Item Finder for Apple Find My App Instruction Manual

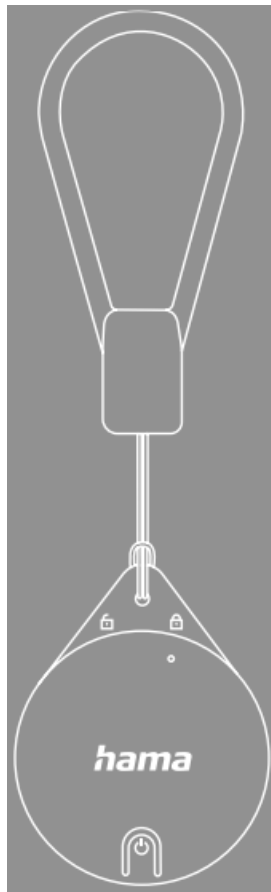
## Contents

- 1 00185815 00185816
  - 1.1 ITEM FINDER
  - 1.2 Operating Instructions
    - 1.2.1 1. Explanation of warning symbols and notes
    - 1.2.2 2. Package contents
    - 1.2.3 3. Safety instructions
    - 1.2.4 4. App
    - 1.2.5 5. Setup
      - 1.2.5.1 5.1 Activation
      - 1.2.5.2 5.2 Add device
    - 1.2.6 6. Using the app
      - 1.2.6.1 6.1 Find item
      - 1.2.6.2 6.2 “Lost” mode
      - 1.2.6.3 6.3 Notify if left behind
      - 1.2.6.4 6.4 Remove device
    - 1.2.7 7. Deactivation
    - 1.2.8 8. Factory reset
    - 1.2.9 9. Technical data
    - 1.2.10 10. Care and maintenance
    - 1.2.11 11. Warranty disclaimer
    - 1.2.12 12. Declaration of conformity
- 2 Documents / Resources
  - 2.1 References
- 3 Related Posts

***hama***

00185815  
00185816

ITEM FINDER



## Operating Instructions



Thank you for choosing a Hama product.

Take your time and read the following instructions and information completely. Please keep these instructions in a safe place for future reference. If you sell the device, pass on the illustrated quick start guide and the safety instructions in printed form to the new owner.

### 1. Explanation of warning symbols and notes

#### Warning

This symbol is used to indicate safety instructions or to draw your attention to specific hazards and risks.



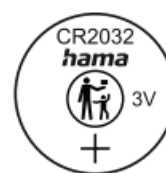
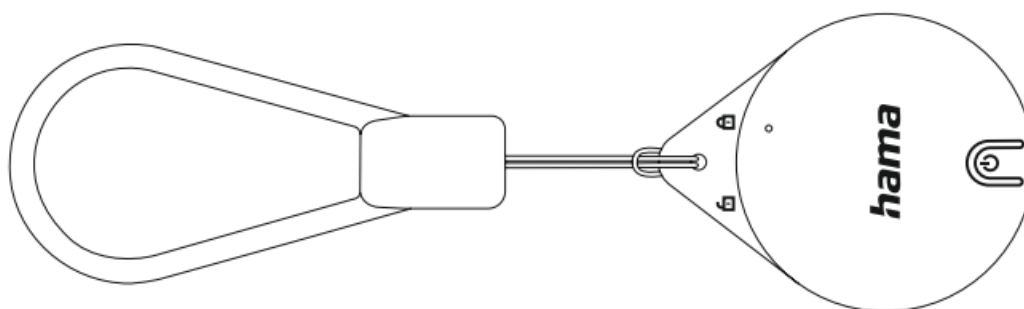
#### Note

This symbol is used to indicate additional information or important notes.



## 2. Package contents

- Item Finder
- CR2032 button cell (1x)
- Safety instructions, illustrated quick start guide



## 3. Safety instructions

- This product is intended for private, non-commercial use only.
- Use the product only for the intended purpose.
- Do not use the product in the immediate vicinity of heaters, other heat sources or in direct sunlight.
- Do not operate the product outside the power limits given in the specifications.
- Do not use the product in areas in which electronic products are not permitted.
- Do not open the device or continue to operate it if it becomes damaged.
- Do not attempt to service or repair the product yourself. Leave any and all service work to qualified experts.
- Do not drop the product and do not expose it to any major shocks.
- Do not modify the product in any way. Doing so voids the warranty.
- Dispose of packaging material immediately in accordance with the locally applicable regulations.
- This product is not a toy. It contains swallowable small parts that pose a suffocation hazard.

### Warning – batteries / button cells



- When inserting batteries, note the correct polarity (+ and – markings) and insert the batteries accordingly. Failure to do so could result in the batteries leaking or exploding.
- Only use batteries that match the specified type. Keep the instructions for the correct choice of batteries

included with the operating instructions of devices safe for future reference.

- Before you insert the batteries, clean the battery contacts and the polarity contacts.
- Do not allow children to change batteries without supervision.
- Replace all the batteries in a set at the same time.
- Do not mix old and new batteries, or batteries of different types or from different manufacturers.
- Remove the batteries from products that are not being used for an extended period (unless these are being kept ready for an emergency).
- Do not short-circuit batteries.
- Do not charge batteries.
- Do not burn batteries or heat them up.
- Never open, damage or swallow batteries or allow them to enter the environment. They can contain toxic, environmentally harmful heavy metals.
- Remove spent batteries from the product and dispose of them without delay.
- Avoid storing, charging and using in extreme temperatures and at extremely low atmospheric pressures (such as at high altitudes).
- Ensure that batteries with damaged housings do not come into contact with water.
- Keep batteries out of the reach of children.
- Do not swallow batteries or button cells. Burning hazard from hazardous substances.
- If the battery compartment will no longer close securely, stop using the product and keep it away from children.
- This product contains button cells. If the button cell is swallowed, serious internal burns can occur within 2 hours and ultimately lead to death.
- If you suspect that a button cell has been swallowed or is in any part of the body, seek medical attention immediately.
- Keep new and used button cells out of the reach of children.



#### 4. App

This product only supports Apple devices with the “Find My” App.

Versions: iPhone or iPod Touch with iOS 14.3 or higher, iPad with iPadOS 14.3 or higher, Mac with macOS Sur 11.1 or higher.

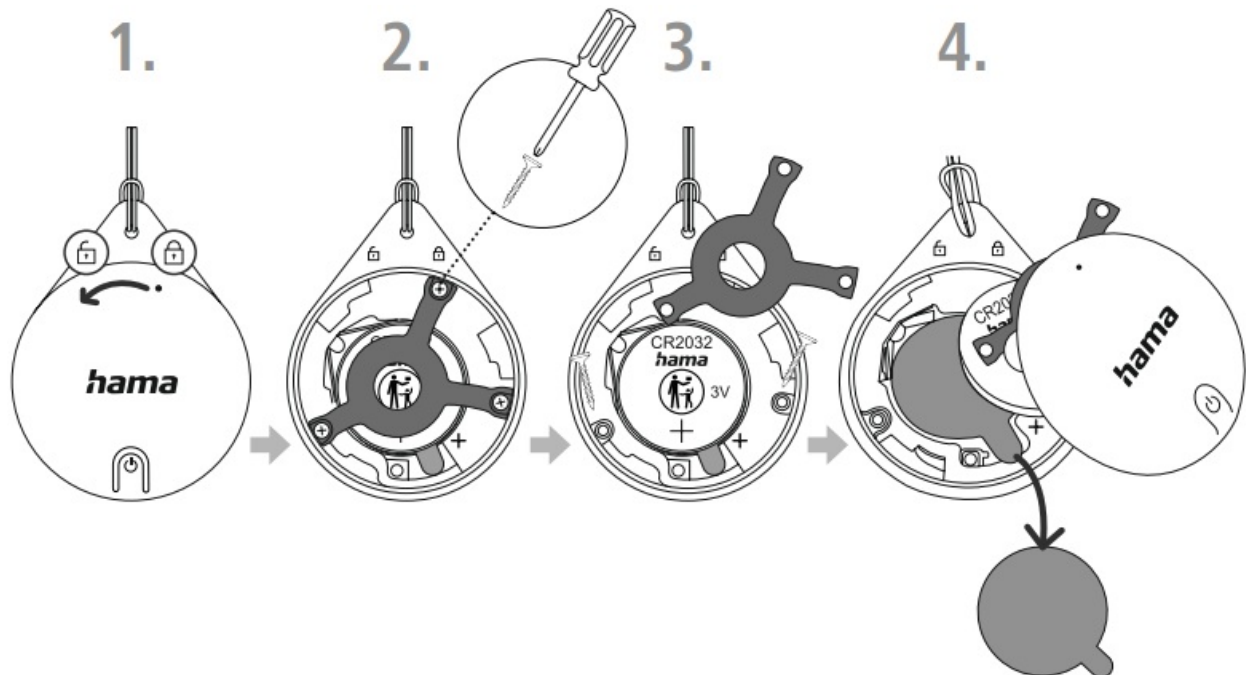
It is recommended to update the system with the latest version.





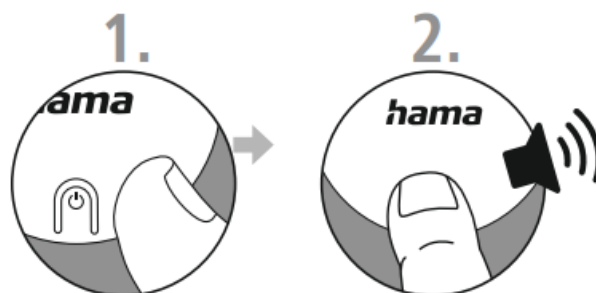
## 5. Setup

Press on the housing and slide it anti-clockwise to the mark (1). Remove the cover. Use a screwdriver to remove the metal clip (2 and 3). Remove the battery and remove the isolation strip (4). Reinsert the battery. Screw the metal clip back on. Replace the lid and turn it clockwise to the mark.



### 5.1 Activation

Press and hold the pairing button for 2 seconds (1) until you hear a tone (2). Pairing mode is now active for 10 minutes and ends with an acoustic signal. To pair the item finder again after these 10 minutes, press the button again for 2 seconds.



### 5.2 Add device

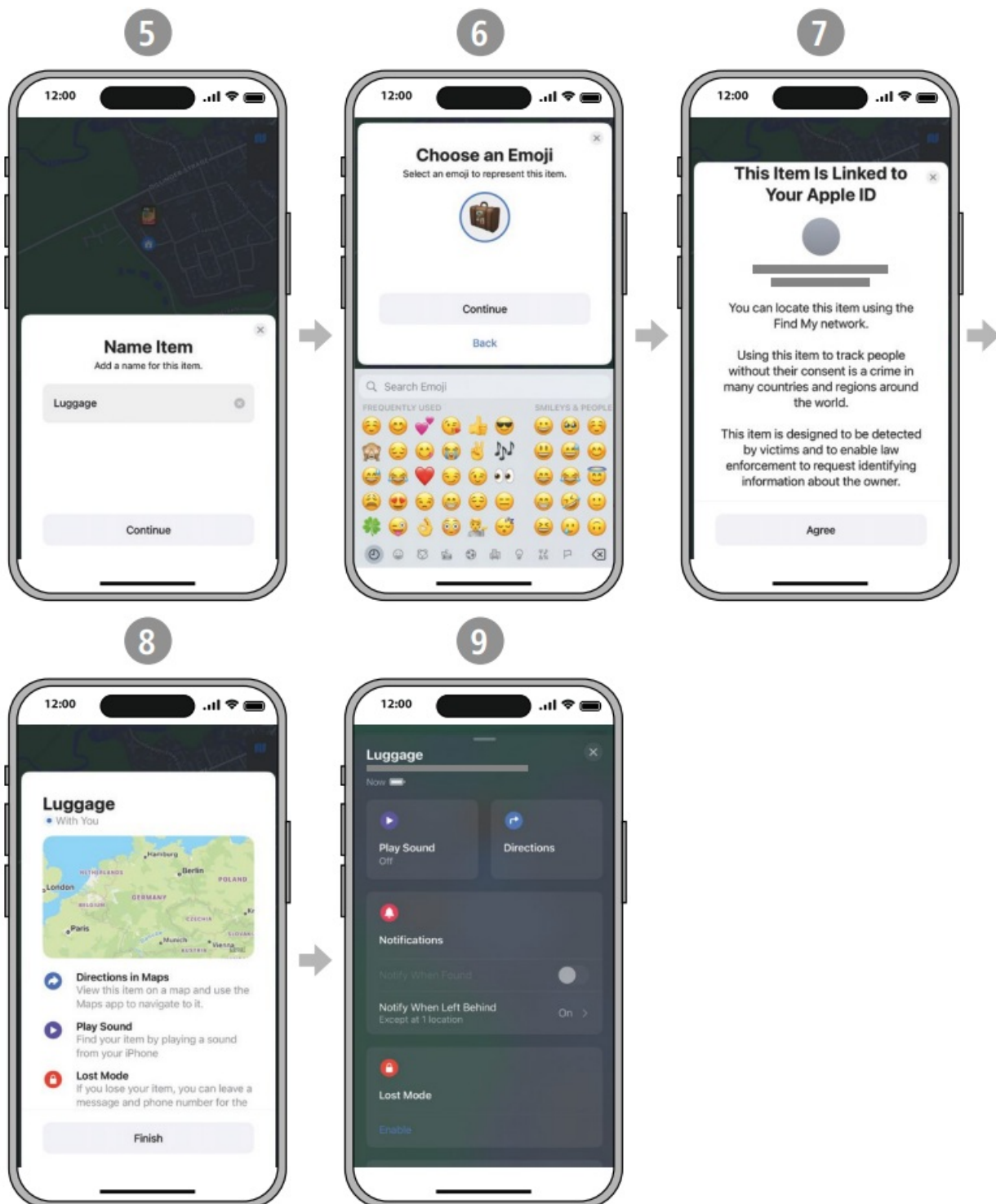
Activate the Bluetooth function on your Apple device (1) and open the “Find My” App. Place the item finder next to your Apple device. Click on “Devices” (2) and select “Add other object” (3). The system will now automatically

search for the “Hama Finder”. As soon as this appears, click on “Connect” (4). The Hama Finder is now connected to your Apple device.



Enter a name for your item (5) and select an emoji. Click “Continue” (6).

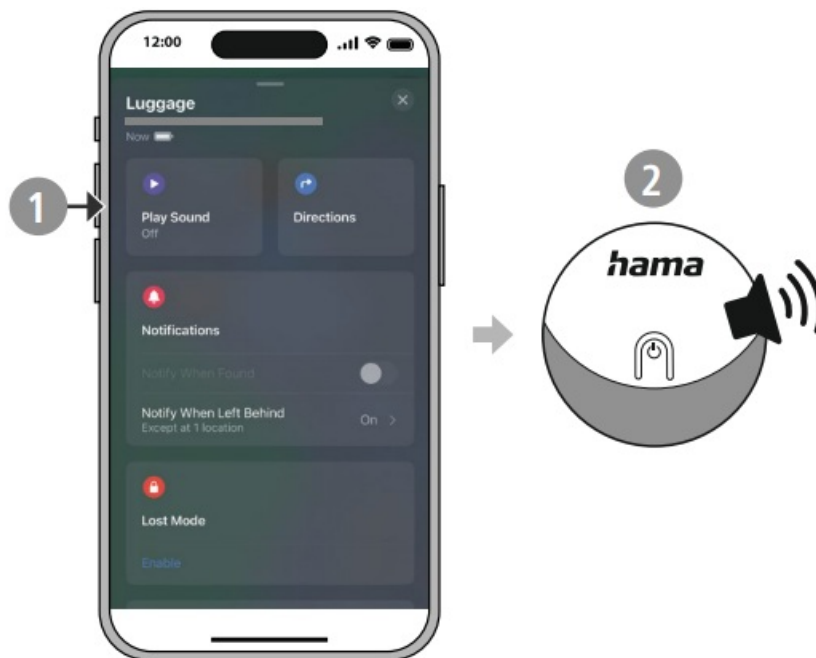
The Hama Finder is linked to your Apple ID. Click “Accept” (7) to finalise the registration. The current location is now displayed on the map. Click “Finish” (8). You will now see detailed information and available functions for your device (9).



## 6. Using the app

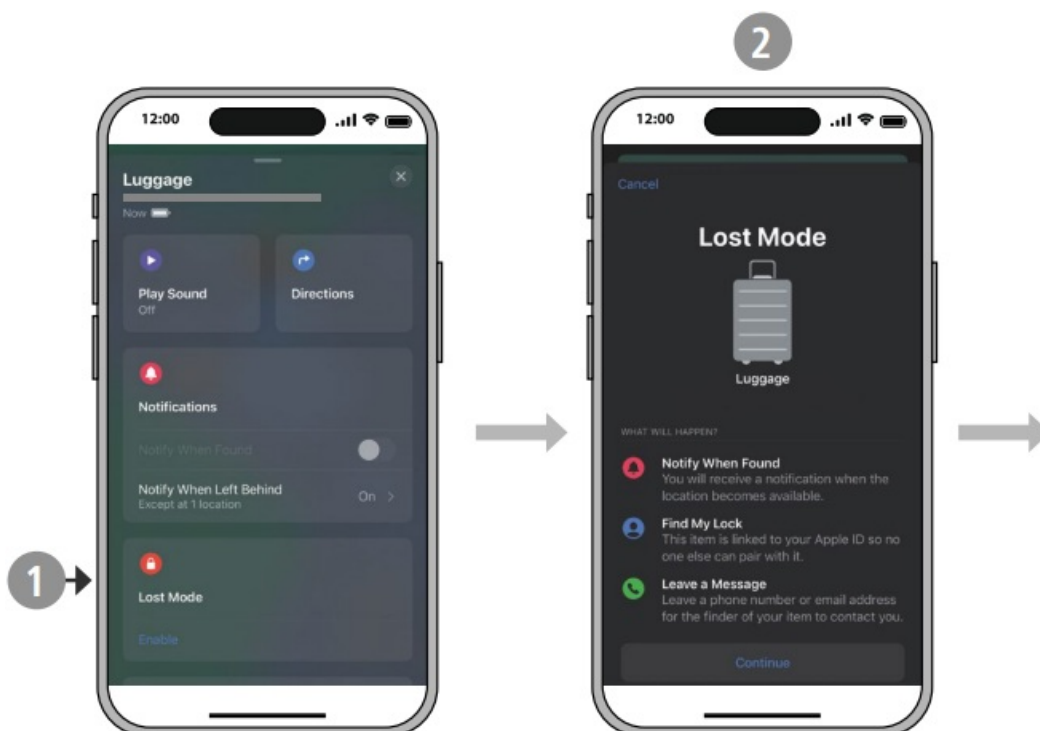
### 6.1 Find item

If you cannot find an object that is within your Bluetooth range, click “Play sound” (1). The item finder will emit an acoustic signal for 10 seconds (2) so that you can locate it.

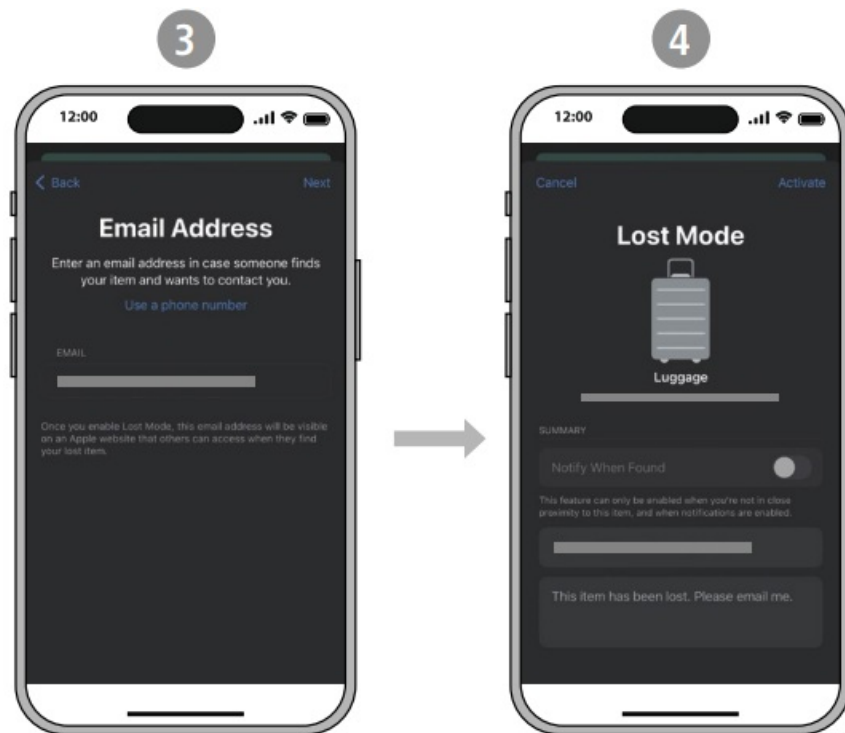


## 6.2 "Lost" mode

If your Apple device and the item are outside your Bluetooth range, there is no connection to the "Find My" App. In this case, the missing item can be localised by other Apple devices. Click on your item finder on the device page. Activate "Lost" mode (1). Read the information on this mode and then click "Continue" (2). Enter your e-mail address or telephone number and click "Next" (3). Then click "Activate" (4). Other Apple users can contact you if your missing item has been found.



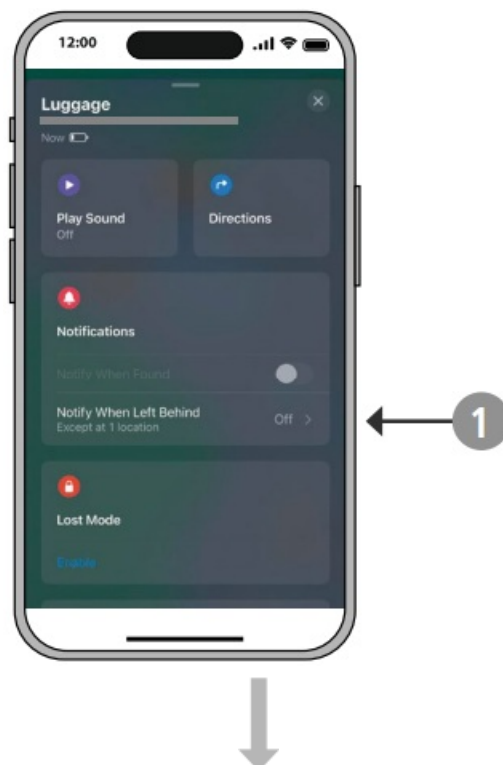


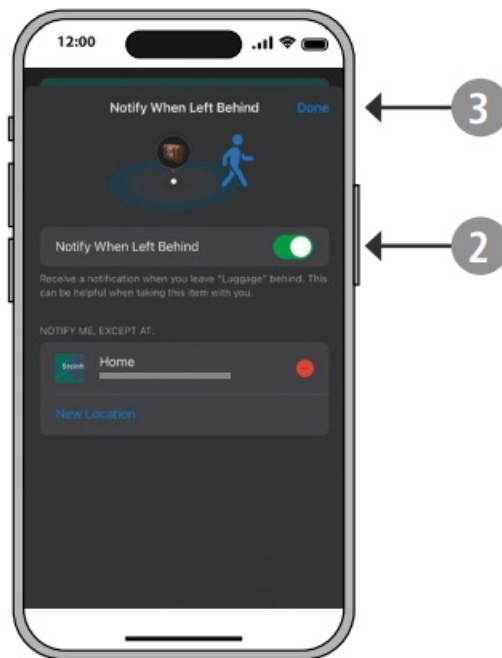


### 6.3 Notify if left behind

This function is available from iOS 15.

If you suddenly lose an item that you are carrying with you, you will receive a notification. Open the device page in the Apple "Find My" App. Click "Notify me when left behind" (1). Activate the function (2) and click on "Done" (3).

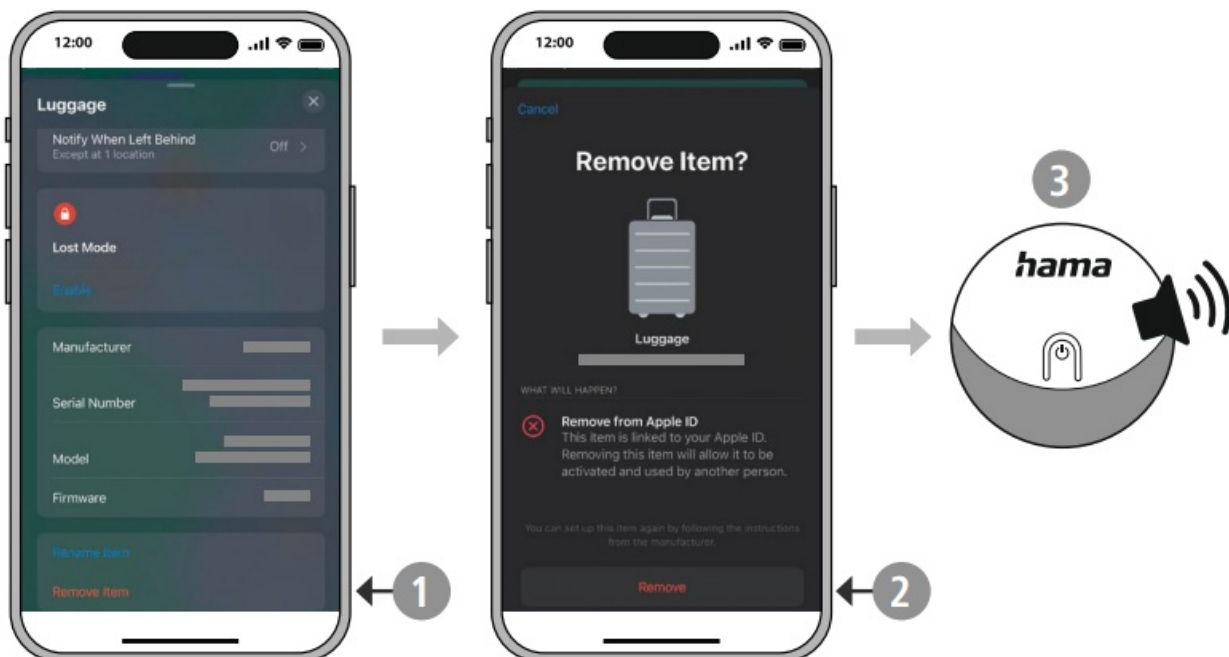




#### 6.4 Remove device

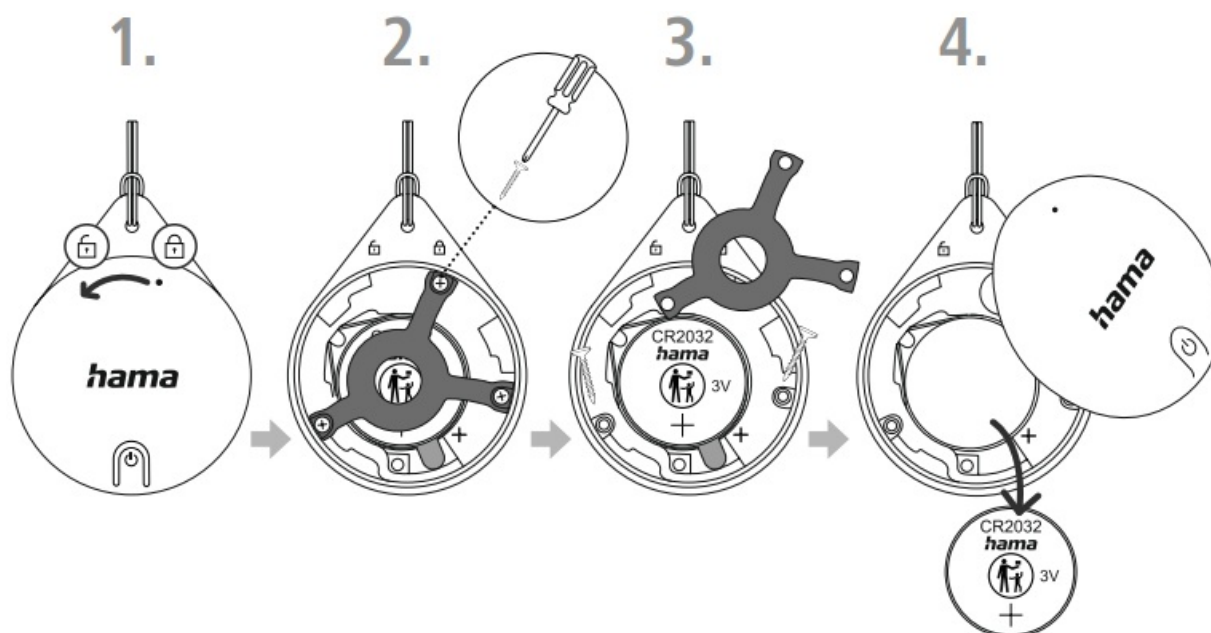
The item finder must be connected to the Apple device so that the decoupling between the item finder and the Apple device is synchronised. If there is no connection when the item finder is removed, it is only removed from the “Find My” App only. However, the item finder is still linked to the Apple device and therefore cannot be used with another Apple device.

Open the device page in the Apple “Find My” App. Select “Remove item” (1) and then click on “Remove” (2). An acoustic signal is emitted after removal (3). The item finder will now be deleted from your Apple ID.



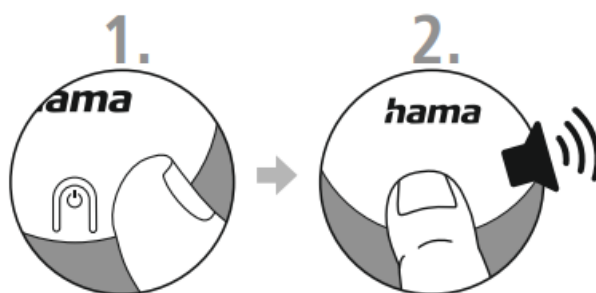
## 7. Deactivation

Press on the housing and slide it anti-clockwise to the mark (1). Remove the cover. Use a screwdriver to remove the metal clip (2 and 3). Remove the battery (4).



## 8. Factory reset

If you want to pair the item finder with a new Apple ID, it must be reset to the factory settings. Press and hold the pairing button (1). You will hear one acoustic signal, two acoustic signals, three acoustic signals and then a long acoustic signal (2). Release the pairing button again. Two acoustic signals sound again. The item finder has been reset to factory settings.



## 9. Technical data

<b>Bluetooth® version</b>	5.0
<b>Loop material</b>	Silicone
<b>Housing material</b>	Polycarbonate (PC)
<b>Dimensions</b>	45 x 36 x 8.7 mm
<b>Weight</b>	13 g
<b>Protection class</b>	IPX5



#### 10. Care and maintenance

Only clean this product using a lint-free, slightly damp cloth and do not use any harsh cleaners.

#### 11. Warranty disclaimer

Hama GmbH & Co KG assumes no liability and provides no warranty for damage resulting from improper installation/mounting, improper use of the product or from failure to observe the operating instructions and/or safety notes.

#### 12. Declaration of conformity



Hama GmbH & Co KG hereby declares that the radio equipment type [00185815, 00185816] is in compliance with Directive 2014/53/EU. The full text of the EU declaration of conformity is available at the following Internet address:

<https://de.hama.com> ➡ 🔍 ➡ 00185815, 00185816 ➡ Downloads

<b>Frequency band(s)</b>	2402 – 2480MHz
<b>Maximum radio-frequency power transmitted</b>	5.82 dBm

# ***hama***

**Hama GmbH & Co KG**  
86652 Monheim / Germany

**Service & Support**



[www.hama.com](http://www.hama.com)



+49 9091 502-0

The Apple Find My network provides an easy, secure way to locate compatible personal items on a map using the Find My app on your iPhone, iPad, iPod touch, Mac, or the Find Items app on Apple Watch.

To use the Apple Find My app to locate this item, the latest version of iOS, iPadOS, or macOS is recommended.

Use of the Works with Apple badge means that a product has been designed to work specifically with the technology identified in the badge and has been certified by the product manufacturer to meet Apple Find My network product specifications and requirements. Apple is not responsible for the operation of this device or use of this product or its compliance with safety and regulatory standards.

Apple, Apple Find My, Apple Watch, Find My, iPhone, iPad, iPadOS, Mac, macOS and watch OS are the trademarks of Apple Inc. IOS is a trademark or registered trademark of Cisco in the U.S. and other countries and is used under license.

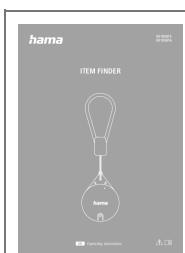
The Bluetooth® word mark and logos are registered trademarks owned by Bluetooth SIG, Inc. and any use of such marks by Hama GmbH Er Co KG is under license. Other trademarks and trade names are those of their respective owners.

All listed brands are trademarks of the corresponding companies. Errors and omissions excepted, and subject to technical changes. Our general terms of delivery and payment are applied.

00185815\_16/04.24

---

## Documents / Resources



[hama 00185815 Key Finder Item Finder for Apple Find My App](#) [pdf] Instruction Manual  
00185815 Key Finder Item Finder for Apple Find My App, 00185815, Key Finder Item Finder for Apple Find My App, Item Finder for Apple Find My App, Apple Find My App, My App

## References

- [h hama.com](https://www.hama.com)
- [h Offizieller Hama Onlineshop | Hama DE](#)
- [User Manual](#)

[Manuals+](#), [Privacy Policy](#)

This website is an independent publication and is neither affiliated with nor endorsed by any of the trademark owners. The "Bluetooth®" word mark and logos are registered trademarks owned by Bluetooth SIG, Inc. The "Wi-Fi®" word mark and logos are registered trademarks owned by the Wi-Fi Alliance. Any use of these marks on this website does not imply any affiliation with or endorsement.