



hama 00176937 Smart Plug Socket Instruction Manual

[Home](#) » [Hama](#) » hama 00176937 Smart Plug Socket Instruction Manual 

hama

SMART PLUG
“with Powermeter”
00176937
Operating Instructions



Contents

- 1 Introduction
- 2 Package contents
- 3 Safety instructions
- 4 Commissioning
- 5 Setting options in the Hama Smart Home app
- 6 Extended usage options through scenes
- 7 Technical data
- 8 Maintenance and care
- 9 Disclaimer
- 10 Service and support
- 11 Declaration of conformity
- 12 Documents / Resources
 - 12.1 References

Introduction

Thank you for choosing a Hama product!

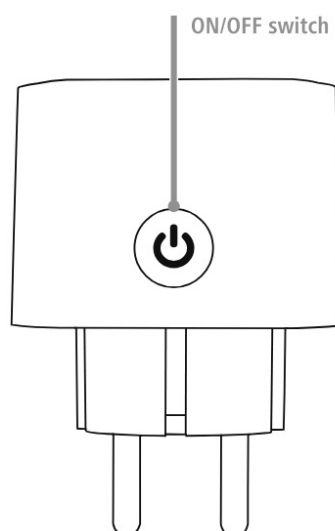
Take your time and read the following instructions and notes completely first.

Keep these operating instructions in a safe place for future reference. If you sell the unit, pass these operating instructions on to the new owner.

1.1 Intended use

The smart socket is suitable for convenient control via app, voice and automations. The unit is suitable for indoor use only.

Any other use is considered improper. Unauthorised modifications or conversions are not permitted and will invalidate the warranty. Do not open your unit yourself under any circumstances and do not attempt to repair it yourself.



1.2 Explanation of warning symbols and notices

Danger of electric shock

This symbol indicates a risk of contact with uninsulated parts of the product carrying a dangerous voltage of such magnitude as to constitute a risk of electric shock.

Warning

Used to mark safety instructions or to draw attention to particular hazards and risks.

Note

Used to mark additional information or important notes.

1.3 Explanation of product labelling symbols

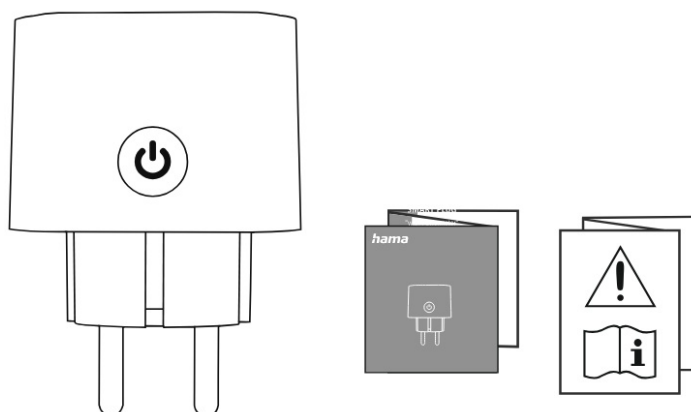


The product is intended for indoor use only.



Package contents

- 1x Smart Plug
- 1x quick guide
- 1x warning and safety instructions



Safety instructions



Warning – Max. 3680 W

Do not operate the product outside its performance limits specified in the technical data.



Danger of electric shock

- Do not open the product or continue to operate it if it is damaged.
- Do not attempt to service or repair the product yourself. Leave any maintenance work to the responsible qualified personnel.
- Do not use the product if the AC adapter, adapter cable or power cord is damaged.
- Do not operate covered.
- Voltage-free only when the plug is pulled out.
- Only start up or operate with closed safety covers.
- The product is intended for indoor use only.
- Protect the product from dirt, moisture and overheating and only use it in dry environments.
- The product is intended for private, non-commercial use.
- Only use the product for its intended purpose.
- Do not operate the product in the immediate vicinity of the heater, other heat sources or in direct sunlight.
- Use the item only under moderate climatic conditions.
- Do not use the product in areas where electronic products are not allowed.
- Do not use the product in a humid environment and avoid splashing water.
- Do not drop the product or subject it to violent shocks.
- Do not make any changes to the product. This will invalidate any warranty claims.

- Be sure to keep children away from the packaging material, there is a danger of suffocation.
- Dispose of the packaging material immediately in accordance with the locally applicable disposal regulations.
- Never plug several copies of this product in a row.
- Do not operate the product outside its performance limits specified in the technical data.
- The product may only be operated on a supply network as described on the type plate.
- This product, like all electrical products, does not belong in children's hands!



Commissioning

The following steps are required to put the unit into operation:

- Connect the unit to a properly installed and easily accessible mains socket.
- Set the unit to pairing mode by holding the button for about 5 seconds. The LED starts flashing quickly.

4.1 Installing the Hama Smart Home app

To use of the unit's functions, you need a smartphone/tablet and the Hama Smart Home app.



Note

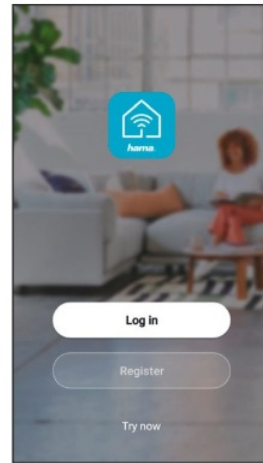
- The following operating systems are supported:
- iOS 16.3 or later
- Android 6.0 or later
- Download the Hama Smart Home app from the App Store (iOS) or from Google Play (Android) to your smartphone/tablet.
- To install the app, follow the instructions on your smartphone/tablet.
- Open the app on your smartphone/tablet.



Note


- During the setup of the app, queries are made as to whether the app is allowed to access functions of your smartphone/tablet. Allow these queries for the full functionality of the unit.
- Register to create a new account. Alternatively, log in with the access data of your existing account.
- Follow the instructions for setting up the app until you can add a new device, see Chapter 4.2

Integration into the Hama Smart Home app.



<https://link.hama.com/app/smart-home>

Note

-  You can find a detailed description of the Hama Smart Home app and the full range of functions in our app guide at: www.hama.com › article number › Downloads › App operating instructions

Note


Make sure that you are using the latest version of the Hama Smart Home app.

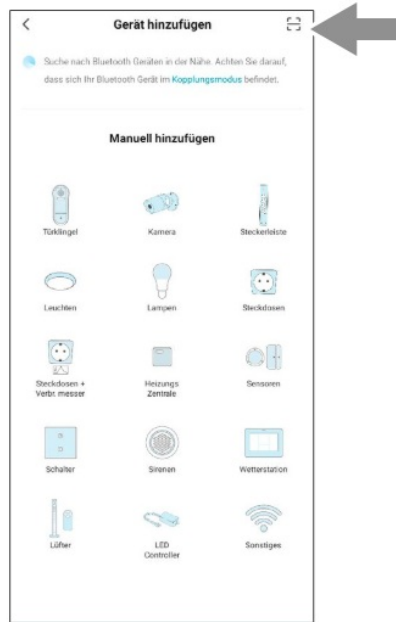
4.2 Integration into the Hama Smart Home app

After successful installation of the device and app, now integrate the device into the app.

- Start the Hama Smart Home app on your smartphone/tablet.
- Tap the [Add Device] button. Or the plus (top right).



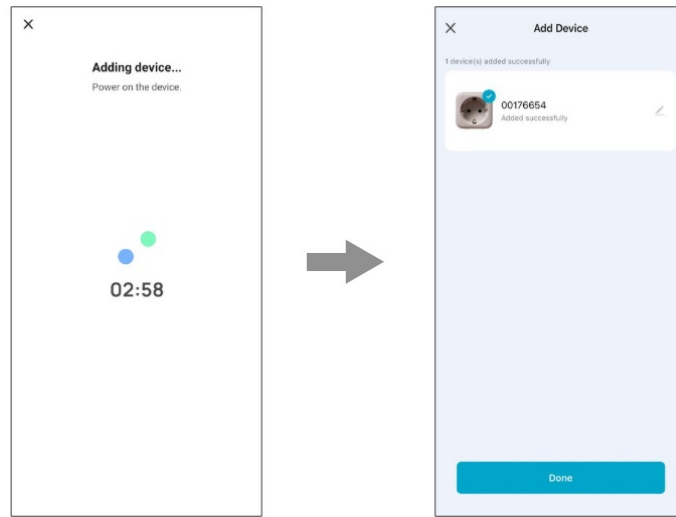
- Tap the button  Scan QR Code button (top right).



- Scan the QR code on your item:



Once the QR code has been recognised, the setup of your item begins. For this, you must confirm the network data of your 2.4 GHz network. The setup process can take up to 3 minutes. Once setup is complete, you can customise the name of your item or finish the setup process.



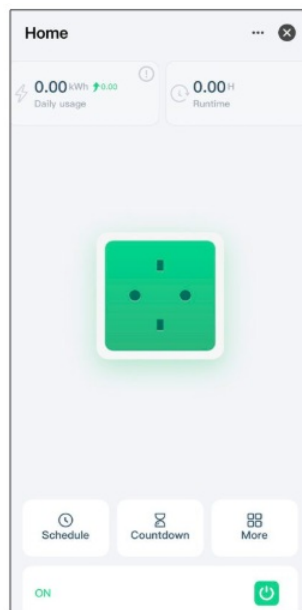
4.3 Embedding via a third-party app

Via the Matter radio standard, it is possible for you to control our item in all compatible third-party apps in addition to our app. Please note, however, that the full range of functions is only available to you when using the Hama Smart Home app.

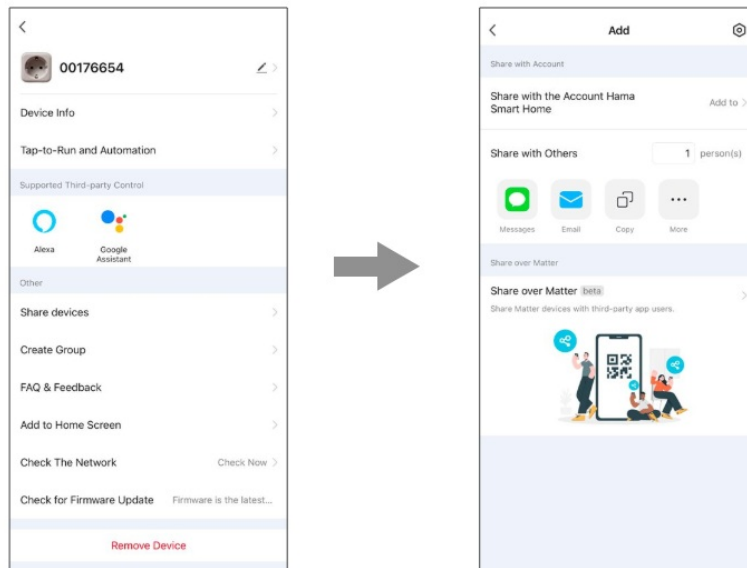
4.3.1 Share after initial integration in Hama Smart Home app:

If you have already set up the item in the Hama Smart Home app, but want to share it with a third-party app for control, this is possible via the following steps:

Open the item and navigate to the item settings via the (pen) icon.



Then generate an individual QR code and numerical code via the point (share via Matter).



Now follow the steps in your chosen Matter-enabled app to set up the item using the generated number or QR code.

4.3.2 Initial integration via a third-party app

You can also use our items without first connecting them to the Hama Smart Home app. Please follow the steps below to do so:

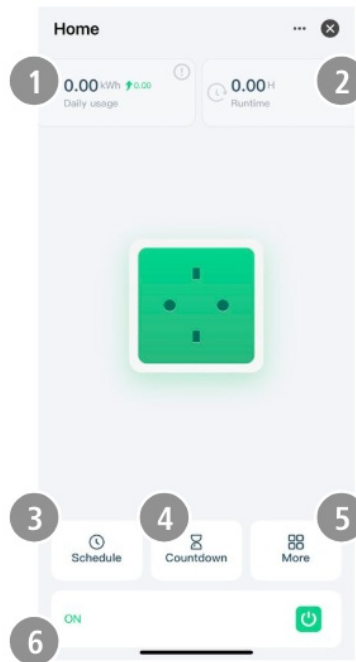
- Open your chosen Matter-compatible app and start the device integration process.
- Press and hold the button on the socket for approx. 5 seconds until the LED starts flashing.
- Scan the QR code on the side of the socket with the corresponding app.

Note

- Please make sure that the app you choose supports the Matter standard.
- Find out about other requirements of the provider and follow them if necessary.

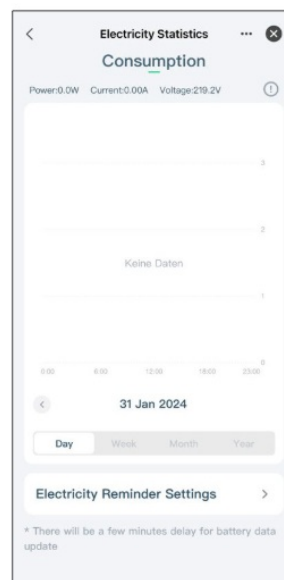
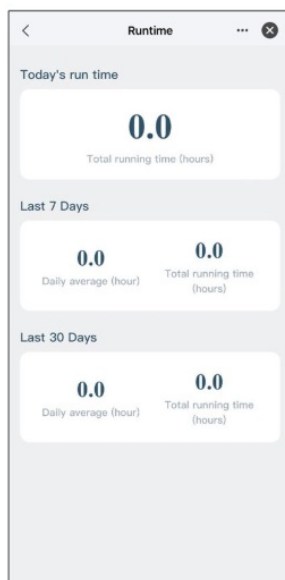
Setting options in the Hama Smart Home app

The following settings can be made in the app:



1. Current consumption	4. Countdown
2. Run time	5. Function settings: (Switching sequence, child lock, LED mode, etc.)
3. Schedule	6. Switching on/off

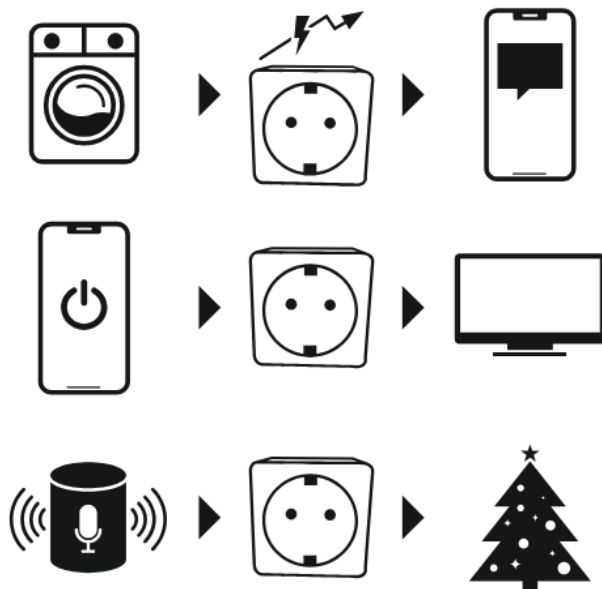
Scenes can be created in the app for extended usage options. (See chapter 6 and App Guide)



Extended usage options through scenes

Through scenes and automations that can be created in the app, there are many possible combinations and uses of these products, depending on the Smart Home products already in your home. Programming is always done via the app (see chapter 4 of the App Guide) and is offered/suggested to you individually.

Standard usage option



Technical data

Input voltage	220 – 240 V ~, 50 Hz
Maximum connected load	16 A, 3680 W
Frequency band	2.4 GHz
Radiated max. transmitting power	< 100 mW
Measuring range	3W – 3680W

Maintenance and care



Note

Disconnect the unit from the mains before cleaning and when not in use for a long time.
Clean this product with a lint-free, slightly damp cloth and do not use aggressive cleaners.

Disclaimer

Hama GmbH & Co KG accepts no liability or warranty for damage resulting from improper installation, assembly and improper use of the product or failure to observe the operating instructions and/or safety instructions.
Ensure that no water is able to enter the product.

Service and support

Please contact the Hama product advisory service if you have any questions about the product.
Hotline: +49 9091 502-0 (Deu/Eng)
Further support information can be found here: www.hama.com



To limit exposure to electromagnetic fields

This appliance is intended to be used at a distance of at least 20 cm from the user's body or persons nearby. This unit must not be worn on the body.

Declaration of conformity




Hama GmbH & Co KG hereby declares that the radio equipment type[00176937]complies with Directive 2014/53/EU. The full text of the EU declaration of conformity is available at the following internet address:

<https://de.hama.com> ➔ [00176937](#) ➔ [Downloads](#)

hama

Hama GmbH & Co KG
86652 Monheim/Germany
Service & Support

 www.hama.com

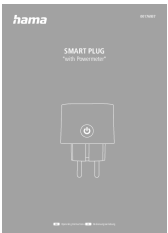
 +49 9091 502-0

The Bluetooth® word mark and logos are registered trademarks owned by Bluetooth SIG, Inc. and any use of such marks by Hama GmbH & Co. KG is under license. Other trademarks and trade names are those of their respective owners.

All listed brands are trademarks of the corresponding companies. Errors and omissions excepted, and subject to technical changes. Our general terms of delivery and payment are applied.

00176937/02.2 4

Documents / Resources

	<p>hama 00176937 Smart Plug Socket [pdf] Instruction Manual 00176937, 00176937 Smart Plug Socket, Smart Plug Socket, Socket</p>
---	---

References

- hama.com
- [Offizieller Hama Onlineshop | Hama DE](#)
- [Startseite hama.com](#)
- [User Manual](#)

[Manuals+](#), [Privacy Policy](#)

This website is an independent publication and is neither affiliated with nor endorsed by any of the trademark owners. The "Bluetooth®" word mark and logos are registered trademarks owned by Bluetooth SIG, Inc. The "Wi-Fi®" word mark and logos are registered trademarks owned by the Wi-Fi Alliance. Any use of these marks on this website does not imply any affiliation with or endorsement.