

hama 00176574 WLAN Socket Strip



hama 00176574 WLAN Socket Strip Instruction Manual

[Home](#) » [Hama](#) » hama 00176574 WLAN Socket Strip Instruction Manual 

Contents

- 1 hama 00176574 WLAN Socket Strip
- 2 Product Usage Instructions
- 3 Frequently Asked Questions
- 4 Operating Instructions
- 5 Explanation of warning symbols and notes
- 6 Explanation of symbols used on the product label
- 7 Package contents
- 8 Safety instructions
- 9 Technical data
- 10 Start-up and operation
- 11 Here'show easy it is Download the app
- 12 Setting options
- 13 Extended usage options with scenarios
- 14 Care and maintenance
- 15 Warranty disclaimer
- 16 RF exposure information
- 17 Declaration of conformity
- 18 Documents / Resources
 - 18.1 References

hama

hama 00176574 WLAN Socket Strip



Specifications

- Input voltage (00176571 / 00176573 / 00176575 / 00176626): 16 A, 3680 W
- Frequency band (00176571 / 00176573 / 00176575 / 00176626): 2.4 GHz
- Maximum radiofrequency power transmitted (00176571 / 00176573 / 00176575 / 00176626): < 100 mW
- Input voltage (00176574 / 00176594 / 00176612 / 00176624 / 00176627): 10 A, 2300 W
- Frequency band (00176574 / 00176594 / 00176612 / 00176624 / 00176627): 2.4 GHz
- Maximum radiofrequency power transmitted (00176574 / 00176594 / 00176612 / 00176624 / 00176627): < 100 mW
- USB connection (00176612): 5V 2100mA (1x max. 2100mA)
- USB connection (00176574): 5V 4200mA (1x max. 2400mA)

Product Usage Instructions

Explanation of warning symbols and notes

- Risk of electric shock: This symbol indicates a risk of electric shock from touching uninsulated product parts that may carry hazardous voltage.
- Warning: This symbol is used to indicate safety instructions or to draw your attention to specific hazards and risks.
- Note: This symbol is used to indicate additional information or important notes.

Explanation of symbols used on the product label

The product is intended only for use inside buildings.

Safety instructions

Warning: Do not operate the product outside the power limits given in the specifications.

Start-up and operation

Warning: Follow the steps below to set up and operate the product:

1. Download the Hama Smart Home app from the Apple App Store or Google Play Store.
2. Create a new account or log in with your existing account.
3. Integrate the device into the Hama Smart Home app by following the instructions provided.

Connecting devices to the Apple Home app (00176626)

To connect the device to the Apple Home app, follow these steps:

1. Open the Apple Home app on your device.
2. Add a new device and select the appropriate option for socket integration.
3. Follow the on-screen instructions to complete the integration process.

Setting options

The following settings can be made in the app:

- Socket On/Off
- Timer: Time control of the connected device
- Countdown: The device is switched off/on after a set time

Socket with consumption meter

The socket with a consumption meter allows you to monitor energy consumption. In addition to the settings mentioned in section 6, you can also view energy consumption data.

Extended usage options with scenarios

Scenarios and automated sequences can be created in the app to allow various combination options and usage options for the product. Refer to Section 4 of the App Guide for programming instructions.

Frequently Asked Questions

Q: Where can I download the Hama Smart Home app?

A: You can download the app from the Apple App Store or Google Play Store.

Q: Can I use the product outside buildings?

A: No, the product is intended only for use inside buildings.

Q: What is the maximum connected power for the different variants of the product?

A: The maximum connected power varies depending on the model:

- 00176571, 00176573, 00176575, 00176626: Max. 3680 W
- 00176574, 00176594, 00176612, 00176624, 00176627: Max. 2300 W

MODELS

- 00176571
- 00176573
- 00176574
- 00176575
- 00176594
- 00176612
- 00176624
- 00176626
- 00176627

Link to App



<https://link.hama.com/app/smart-home>

Operating Instructions

Thank you for choosing a Hama product.

Take your time and read the following instructions and information completely. Please keep these instructions in a safe place for future reference. If you sell the device, please pass these operating instructions onto the new owner.

Explanation of warning symbols and notes

Risk of electric shock

This symbol indicates a risk of electric shock from touching uninsulated product parts that may carry hazardous voltage.

Warning

This symbol is used to indicate safety instructions or to draw your attention to specific hazards and risks.

Note

This symbol is used to indicate additional information or important notes.

Explanation of symbols used on the product label

The product is intended only for use inside buildings.

Package contents

00176573 /00176575 /00176594/00176612 / 00176624 /00176626 /00176627:

- 1WiFi socket
- 1brief description
00176571:
- 3WiFi sockets
- 1brief description
00176574:
- 1socket strip
- 1brief description

Safety instructions

- Do not operate while covered.
- Voltage-free only when plug is disconnected.
- Only operate with closed safety covers.
- The product is intended only for use inside buildings.
- Protect the product from dirt, moisture and over-heating and use it in dry environments only.
- This product is intended for private, non-commercial use only.
- Use the product only for the intended purpose.
- Do not use the product in the immediate vicinity of heaters, other heat sources or in direct sunlight.
- Only use the article under moderate climatic conditions.
- Do not use the product in areas in which electronic products are not permitted.
- Do not use the product in a damp environment and avoid splashing water.
- Do not drop the product and do not expose it to any major shocks.
- Do not modify the product in any way. Doing so voids the warranty.
- Keep the packaging material out of the reach of children due to the risk of suffocation.
- Dispose of packaging material immediately in accordance with the locally applicable regulations.
- Never connect multiple units of this product in series.
- Do not operate the product outside the power limits given in the specifications.
- The product must only be operated on a supply network as described on the type plate.
- As with all electrical products, this device should be kept out of the reach of children.

Warning

Max. 3680 W (00176571, 00176573, 00176575, 00176626)

Do not operate the product outside the power limits given in the specifications.

Warning – Max. 2300 W

(00176574, 00176594, 00176612, 00176624, 00176627)

Do not operate the product outside the power limits specified in the technical data.

Risk of electric shock

- Do not open the device or continue to operate it if it becomes damaged.
- Do not attempt to service or repair the product yourself. Leave any and all service work to qualified experts.
- Do not use the product if the AC adapter, adapter cable or power cable is damaged.

Technical data

00176571 /00176573 /00176575 /00176626	
Input voltage	220 –240 V ~, 50 Hz
Maximum connected power	16 A, 3680 W
Frequency band	2.4 GHz
Maximum radio- frequency power transmitted	< 100 mW
Measuring range (00176575)	3W – 3680 W

00176574 /00176594 /00176612 /00176624 / 00176627	
Input voltage	220 –240 V ~, 50 Hz
Maximum connected power	10 A, 2300 W
Frequency band	2.4 GHz
Maximum radio- frequency power transmitted	< 100 mW
USB connection (00176612)	5V 2100mA 1x max. 2100mA
USB connection (00176574)	5V 4200mA 1x max. 2400mA

Start-up and operation

Warning

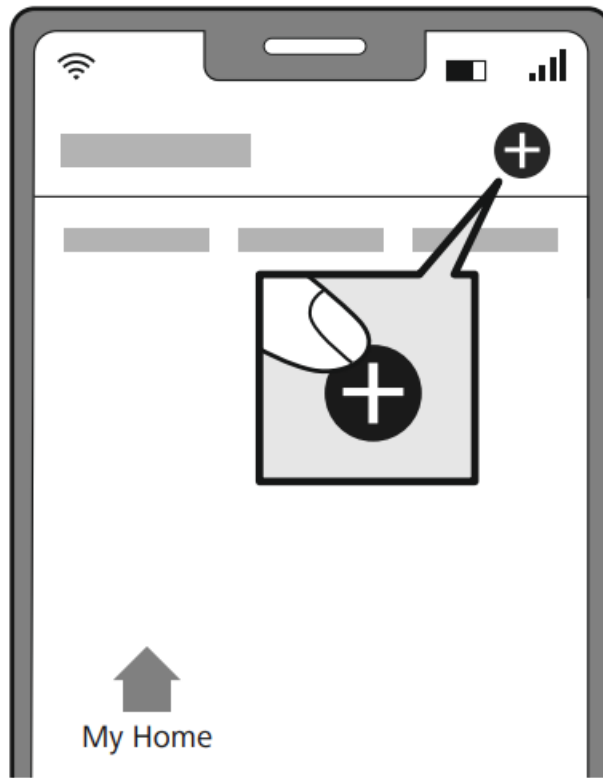
- Only operate the product from a socket that has been approved for the device. The socket must be installed close to the product and must be easily accessible.
- Disconnect the product from the mains using the On/Off switch –if this is not available, unplug the device from the socket.
- If using a multi-socket power strip, make sure that the total power consumption of all connected devices does not exceed the socket strip's maximum throughput rating.
- If you will not be using the product for a prolonged period, disconnect it from mains power.
- Do not use any heat-generating devices (such as electric blankets, coffee machines, etc.) with this product. There is risk of fire and injury.
- Do not use this product with any devices that are motorised or any devices that have a rotating component or tool. There is risk of injury.
- Connect the WiFi socket /socket strip to a properly installed and easily accessible mains socket.
- Press and hold the button on the socket for approx. 5 seconds until the LED starts to flash quickly.
- Follow the instructions in the app.

Here'show easy it is Download the app

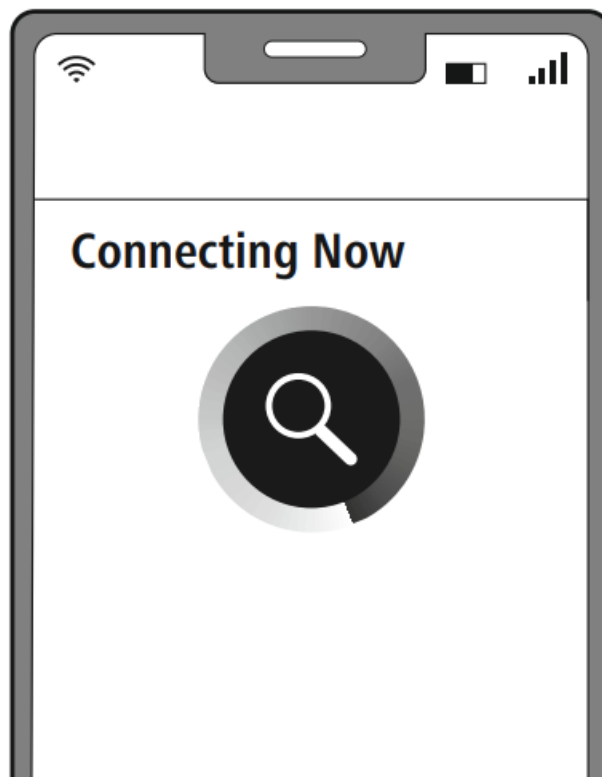
- Download the Hama Smart Home APP from the Apple App Store or Google Play Store.
- Open the Hama Smart Home APP.
- The first time you use the app, you need to register and create a new account. If you already have an account, log in with your access details.

Integrating devicesinto the Hama Smart Home app

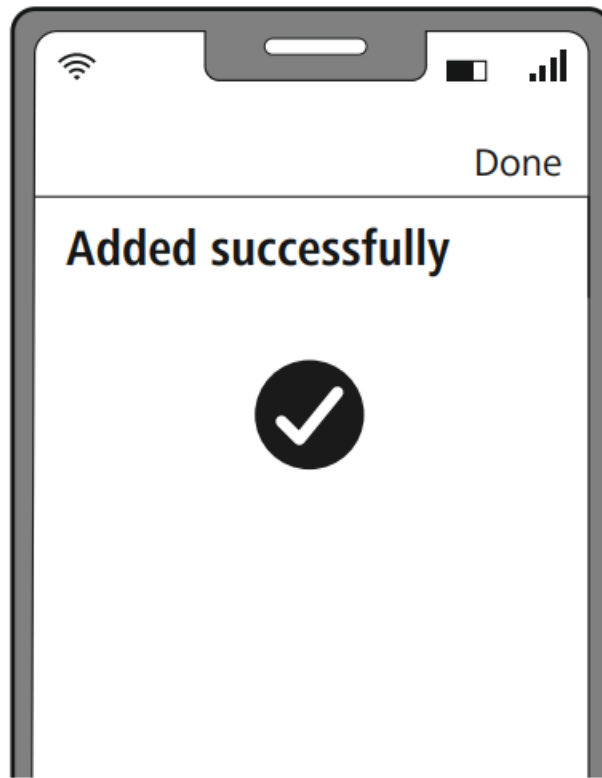
- Press and hold the pairing button for around 5 seconds. The LED starts to flash quickly.If it flashes slowly, press and hold the button again for approx. 5seconds.
- Open the app and sign in.
- Press the the top right-hand corner to add a new device.



- In the list, select the socket strip, sockets or sockets + consumption meter.
- Next enter your WiFi password and confirm with “NEXT”.
- Now confirm that the socket/socket strip’s LED is flashing quickly by ticking “Next step” and clicking on “Next”.
- Your socket/socket strip is now connected.



- Once the connection is successful, the LED stops flashing quickly and the app confirms that your sensor is connected. You can now assign it a different name if you wish.



- Click Finish to end the process.
- You can now configure the device.

Note

A detailed description of the Hama Smart Home App and its full scope of functions can be found in our

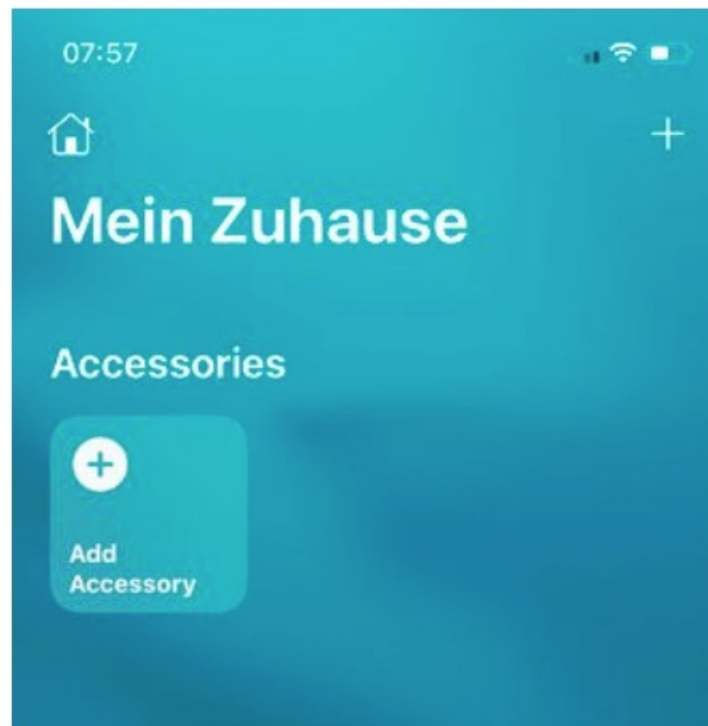
App Guide at:



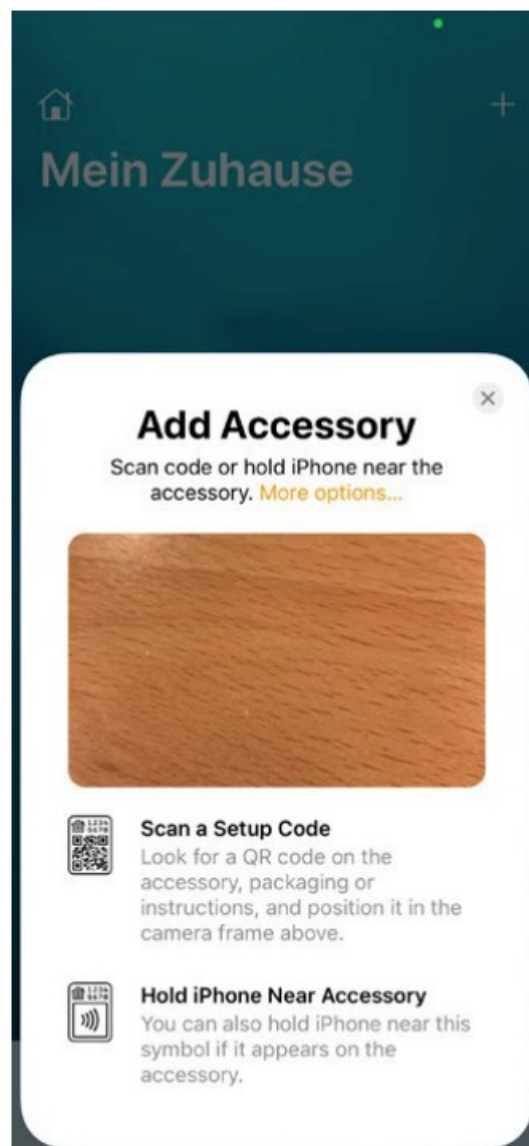
www.hama.com Article Number Downloads App Operating Instructions

Connecting devices to the Apple Home app (00176626)

- Press and hold the pairing button for around 5 seconds. The LED starts to flash quickly. If it flashes slowly, press and hold the button again for approx. 5 seconds.
- Open the Apple Home app.
- Press the + in the top right-hand corner to add a new device.



- Now select “Add Accessory”.
- Now use your mobile phone to scan the QR code on the socket.



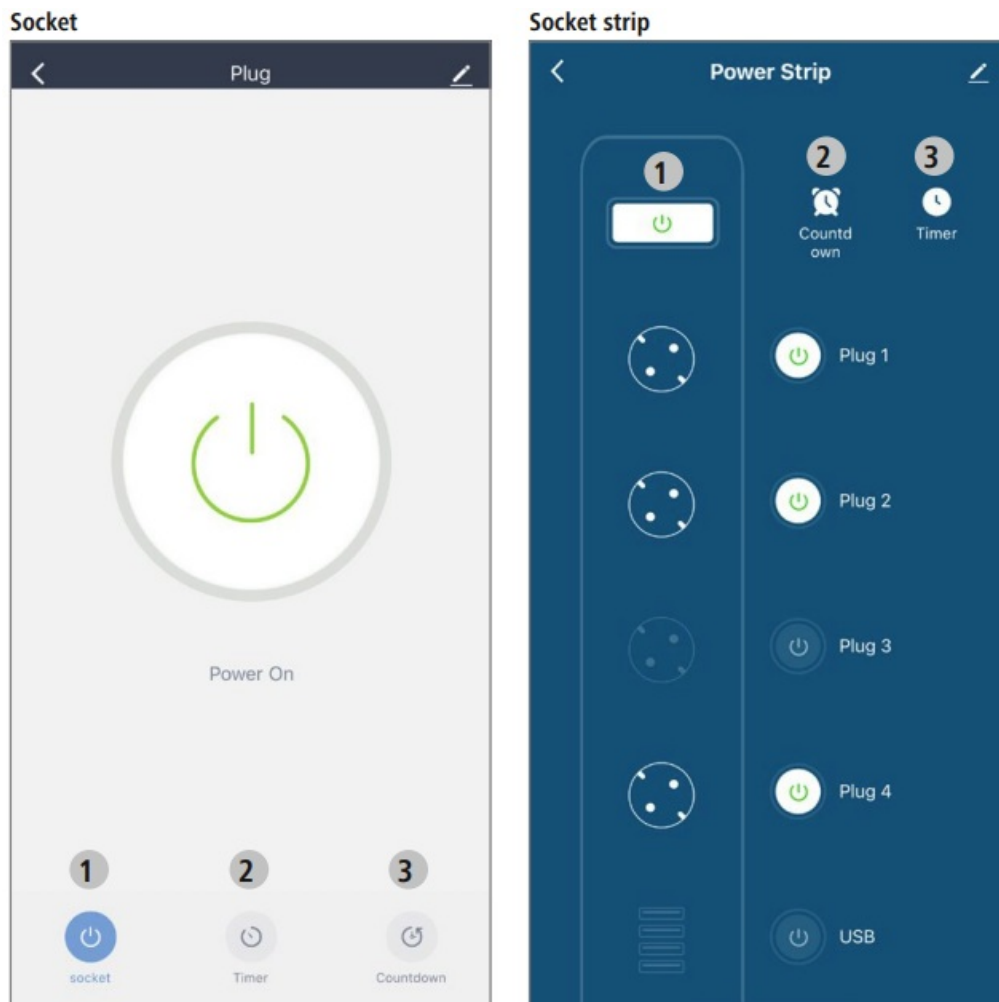
- Once the device has been recognised, select “Add to home”.
- Once the connection is successful, the LED stops flashing and the app confirms that the socket is connected. You can now configure the socket in the app (location, name, display).



- Click “Done” to end the process.

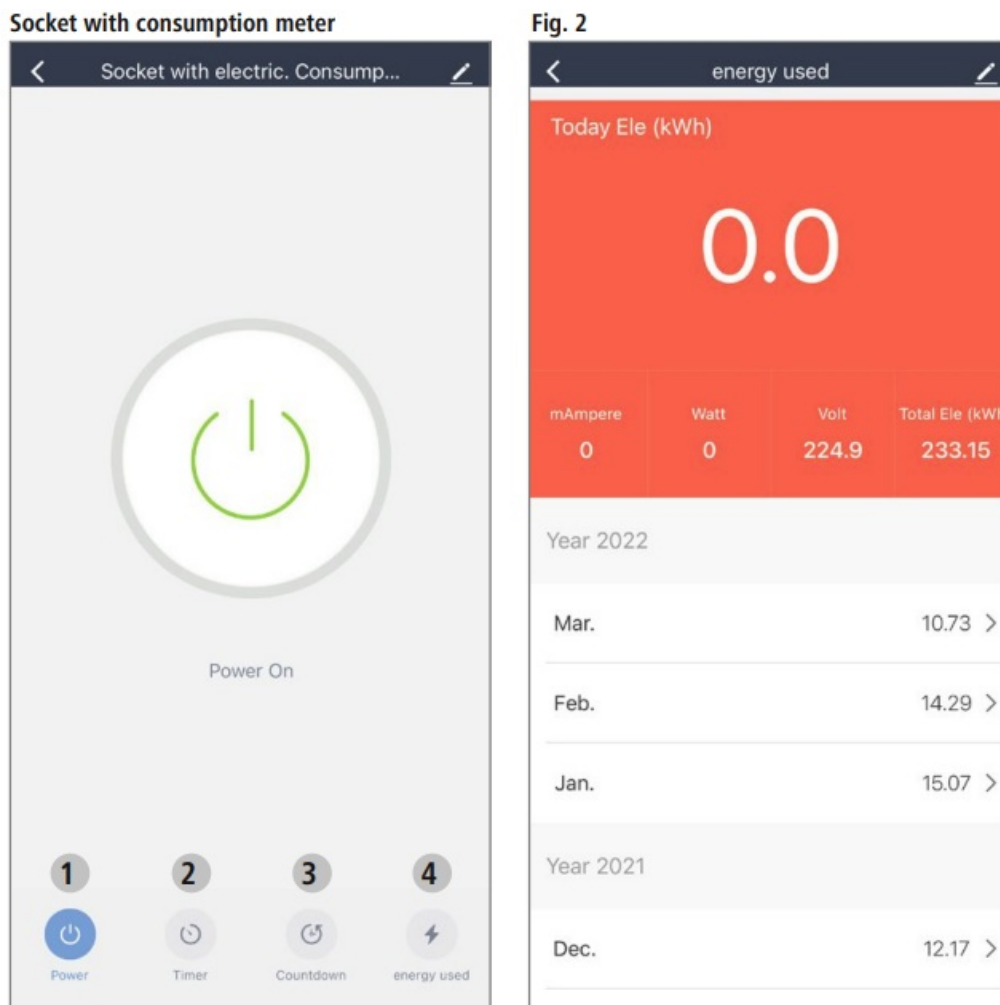
Setting options

The following settings can be made in the app:



1. On/Off
2. Timer: time control of the connected device
3. Countdown: the device is switched off / on after a set time

For extended usage options, scenarios can be created in the app. (See Section 7 and App Guide)



1. On/Off
2. Timer: time control of the connected device
3. Countdown: the device is switched off / on after a set time
4. Energy consumption: See Fig. 2

For extended usage options, scenarios can be created in the app. (See Section 8 and App Guide)

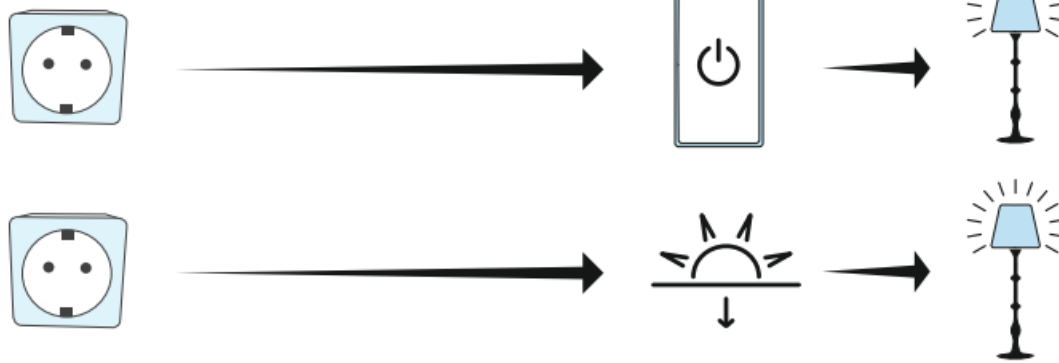
Extended usage options with scenarios

Scenarios and automated sequences that can be created in the app allow various combination options and usage options for these products, depending on the SmartHome products in your home. Programming is always via the app (see Section 4 of the App Guide) and will be offered / suggested to you on an individual basis.

Socket / socket strip (176571, 176573, 176574, 176594, 176612, 176624, 176626, 176627)

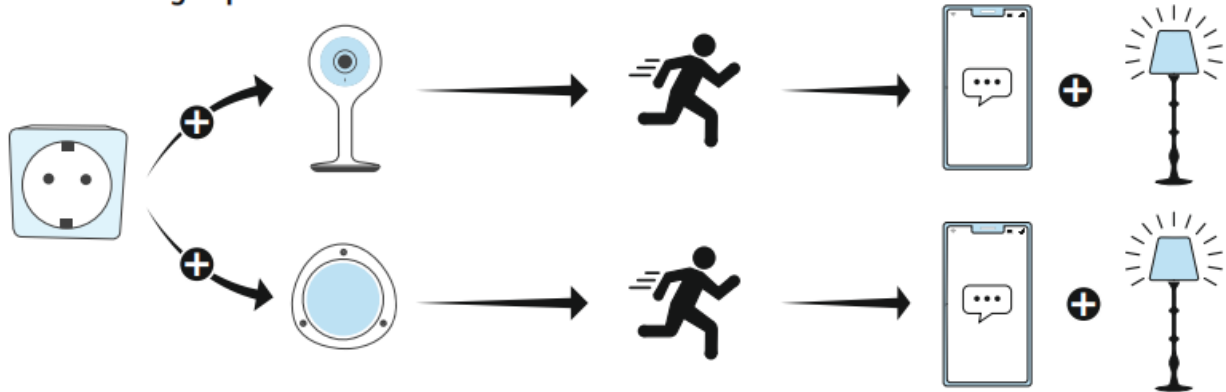
Standard usage option

Standard usage option



Extended usage option

Extended usage option



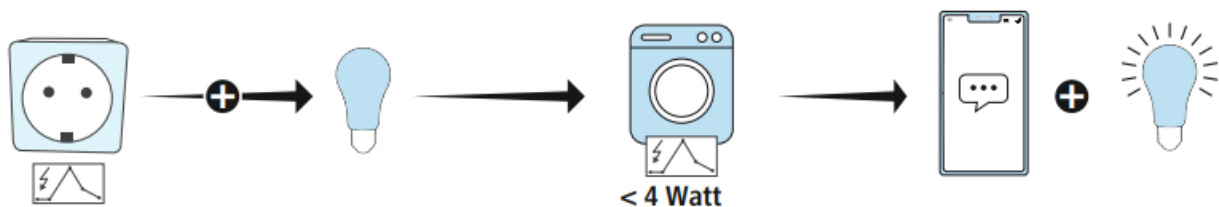
Socket with consumption meter (176575)

Standard usage option

Standard usage option



Extended usage option



Care and maintenance

Note

Disconnect the product from the mains before cleaning and during prolonged periods of non-use.

- Only clean this product using a lint-free, slightly damp cloth and do not use any harsh cleaners.
- Ensure that no water is able to enter the product.

Warranty disclaimer

Hama GmbH & Co KG assumes no liability and provides no warranty for damage resulting from improper installation/mounting, improper use of the product or from failure to observe the operating instructions and/or safety notes.


RF exposure information

This device complies with the EU requirements for limiting the exposure of the general public to electromagnetic fields by means of health protection. The device complies with RF specifications provided it is used 20 cm away from the body.

Declaration of conformity

Hama GmbH & Co KG hereby declares that the radio equipment type [00176571, 00176573, 00176574, 00176575, 00176594, 00176612, 00176624, 00176626, 00176627] is in compliance with Directive 2014/53/EU. The full text of the EU declaration of conformity is available at the following Internet address: www.hama.com -> 00176571, 00176573, 00176574, 00176575, 00176594, 00176612, 00176624, 00176626, 00176627 -> Downloads.

Documents / Resources

	<p>hama 00176574 WLAN Socket Strip [pdf] Instruction Manual 00176574 WLAN Socket Strip, 00176574, WLAN Socket Strip, Socket Strip, Strip</p>
---	--

References

- hama.com
- [Smart Home hama.com](#)
- [User Manual](#)

Manuals+, Privacy Policy

This website is an independent publication and is neither affiliated with nor endorsed by any of the trademark owners. The "Bluetooth®" word mark and logos are registered trademarks owned by Bluetooth SIG, Inc. The "Wi-Fi®" word mark and logos are registered trademarks owned by the Wi-Fi Alliance. Any use of these marks on this website does not imply any affiliation with or endorsement.