

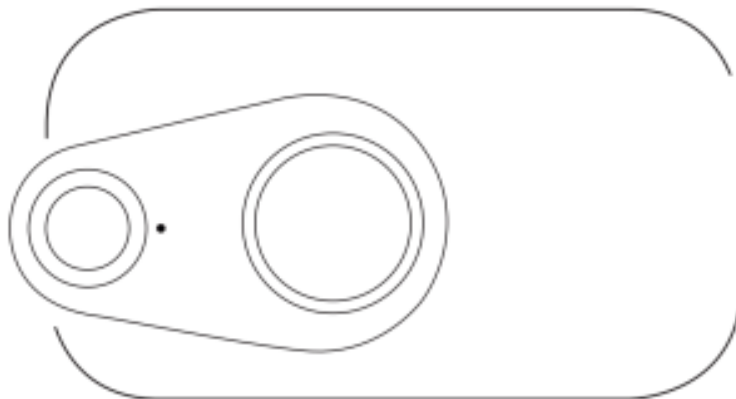


## hama 00004639 BRS3 Bluetooth Remote Shutter Instruction Manual

[Home](#) » [Hama](#) » hama 00004639 BRS3 Bluetooth Remote Shutter Instruction Manual 

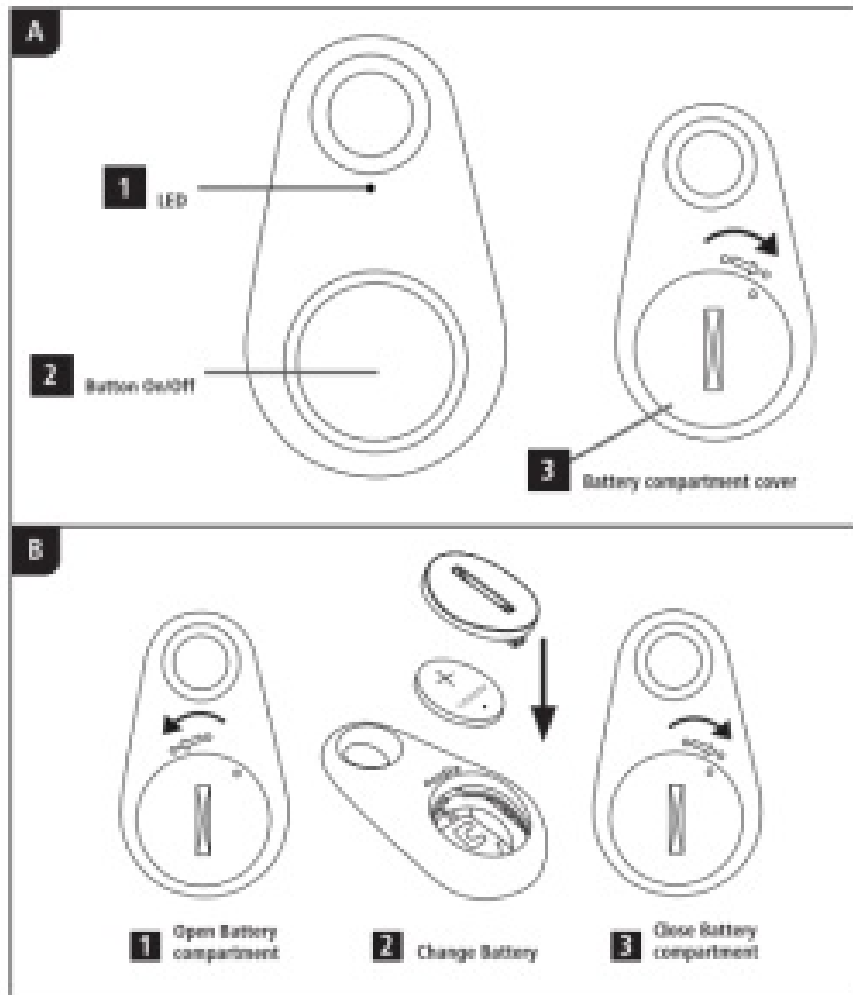


Bluetooth Remote Shutter BRS3  
00004639



operatng stators  
Bedienungsanleitung[h





## Contents

- 1 [Operating instruction](#)
- 2 [System Requirements](#)
- 3 [Getting Started \(B\)](#)
- 4 [Operation](#)
- 5 [Bluetooth pairing \(A\)](#)
- 6 [Automatic Bluetooth connection \(after successful pairing\) \(A\)](#)
- 7 [Replacing the batteries](#)
- 8 [Care and Maintenance](#)
- 9 [Warranty Disclaimer](#)
- 10 [Technical Data](#)
- 11 [Declaration of Conformity](#)
- 12 [Documents / Resources](#)
  - 12.1 [References](#)
- 13 [Related Posts](#)

## Operating instruction

### Controls and Displays (A)

- 1. LED indicator light
- 2. ON / OFF button | Release button
- 3. Battery compartment cover

## 1. Explanation of Warning Symbols and Notes



### **Warning**

This symbol is used to indicate safety instructions or to draw your attention to specific hazards and risks.



### **Note**

This symbol is used to indicate additional information or important notes.

## 2. Package Contents

- Bluetooth Remote Shutter BRS3
- 1 hand strap
- 1 battery(CR2032)
- These operating instructions

## 3. Safety Notes

- Protect the product from dirt, moisture, and overheating, and only use it in a dry environment
- Do not use the product in areas where the use of electronic devices is not permitted
- Do not use the product in moist environments and avoid splashes
- Do not drop the product and do not expose it to any major shocks
- Dispose of packaging material immediately according to locally applicable regulations
- Do not modify the product in any way. Doing so voids the warranty
- Use the product for its intended purpose only
- This product is intended for private, non-commercial use only
- Do not use the product in the immediate vicinity of heaters or other heat sources or in direct sunlight
- Keep this product, like all electrical products, out of the reach of children!
- Do not operate the product outside the power limits given in the specifications
- Do not attempt to service or repair the product yourself. Leave any and all service work to qualified experts
- Do not open the device or continue to operate it if it becomes damaged



### **Warning – Batteries**

- When inserting batteries, note the correct polarity(+ and – markings) and insert the batteries accordingly.  
Failure to do so could result in the batteries leaking or exploding.
- Only use batteries (or rechargeable batteries) that match the specified type
- Before you insert the batteries, clean the battery contacts and the polar contacts
- Do not allow children to change batteries without supervision
- Do not mix old and new batteries or batteries of a different type or make
- Remove the batteries from products that are not being used for an extended period (unless these are being kept ready for an emergency)
- Do not short-circuit batteries

- Do not charge batteries
- Do not throw batteries in a fire



#### **Warning – Batteries**

- Keep batteries out of the reach of children
- Never open, damage, or swallow batteries or allow them to enter the environment. They can contain toxic, environmentally harmful heavy metals
- Immediately remove and dispose of dead batteries from the product
- Avoid storing, charging, or using the device in extreme temperatures and extremely low atmospheric pressure (for example, at high altitudes)



#### **Warning – Button cells**

- Do not ingest battery, risk of burns due to dangerous substances
- This product contains button cells. If swallowed, the button cell can cause severe internal burns within just two hours and lead to death
- Keep new and used batteries out of the reach of children
- If the battery compartment does not close securely, stop using the product and keep it out of the reach of children
- If you think that batteries were swallowed or are in a part of the body, seek medical assistance immediately

### **System Requirements**

- The Bluetooth remote release supports Bluetooth-capable terminal devices such as smartphones and tablet PCs that run the iOS 6 or Android 4.2.2 (Or newer) operating systems



#### **Note**

- Note that support of the Bluetooth remote release depends on your terminal device
- Please refer to the operating instructions for the device you are using

### **Getting Started (B)**

- Open the battery compartment by turning the battery compartment cover (1) anticlockwise using a coin
- Remove the battery compartment cover (2) and insert a CR2032 battery with the correct polarity
- Close the battery compartment by turning the battery compartment cover (3) clockwise using a coin

### **Operation**



- The functions described in this section are only available for Bluetooth-capable terminal devices
- Note that the maximum range for Bluetooth is 10 meters without obstacles such as walls, people, etc

## **Bluetooth pairing (A)**



- Make sure that your Bluetooth-capable terminal device is on and Bluetooth is activated
- Make sure that your Bluetooth-capable terminal device is visible for other Bluetooth devices
- For more information, please refer to the operating instructions of your terminal device
- Press and hold the Power/Release button (2) for about 3 seconds to switch on the Bluetooth remote release.  
The LED indicator light (1) will begin to flash
- This means the Bluetooth remote release is searching for a Bluetooth connection
- Open the Bluetooth settings on your terminal device and wait until Hama BRS3 appears in the list of Bluetooth devices found
- Select Hama BRS3 and wait until the Bluetooth remote release is listed as connected in the Bluetooth settings on your terminal device. The LED indicator light (1) goes out
- You can now use the Bluetooth remote release

## **Automatic Bluetooth connection (after successful pairing) (A)**



- Make sure that your Bluetooth-capable terminal device is on and Bluetooth is activated
- Make sure that your Bluetooth-capable terminal device is visible for other Bluetooth devices
- For more information, please refer to the operating instructions of your terminal device
- The Bluetooth remote release remains connected to the Bluetooth device it was last paired with
- Press and hold the Power/Release button (2) for about 3 seconds to switch on the Bluetooth remote release.  
The LED indicator light (1) will begin to flash
- You can now use the Bluetooth remote release



- After the devices have been paired once, the connection is then established automatically. If the Bluetooth connection is not established automatically, check the following:
- Check the Bluetooth settings of your terminal device to see whether Hama BRS3 is connected. If not, repeat the steps listed under 6.1. Bluetooth pairing
- Check whether obstacles are impairing the range. If so, move the devices closer together
- The performance can also be affected by a weak battery. Change the battery if necessary

- Only one Bluetooth device can be connected at a time. If there is an active connection to another device, deactivate this connection and try again

## Replacing the batteries

The battery has been designed to last for up to 2,000 shots, although this depends on the conditions of use. If the Bluetooth remote release does not respond after you press the release button (2), or does not connect to the terminal device, etc, charge the battery as follows: See (B)

## Care and Maintenance

Only clean this product with a slightly damp, lint-free cloth and do not use aggressive cleaning agents. Make sure that water does not get into the product

## Warranty Disclaimer

Hama GmbH & Co. KG assumes no liability and provides no warranty for damage resulting from improper installation/mounting, improper use of the product, or failure to observe the operating instructions and/or safety notes

## Technical Data



### Bluetooth Remote Shutter

Bluetooth version	4.1
Bluetooth Class	Class 2
Range	Max. 10 m
Dimensions (WxLx H)	52 x 30 x 12 mm
Weight	Approx. 10 g
Battery type	CR2032

## Declaration of Conformity

Hereby, Hama GmbH & Co KG declares that the radio equipment type (00004639) is in compliance with Directive 2014/53/EU. The full text of the EU declaration of conformity is available at the following internet address:

[www.hama.com/00004639](http://www.hama.com/00004639) | Downloads

Frequency band(s)	2.402 GHz- 2.480 GHz
Maximum radio-frequency power transmitted	0.74mWELRP

Hama GmbH & Co KG  
86652 Monheim / Germany  
Service



[www.hama.com](http://www.hama.com)



+49 9091 502-0

D



GB

The Bluetooth™ word mark and logos are registered trademarks owned by Bluetooth SIG, Inc. and any use of such marks by Hama GmbH & Co KG is under license. Other trademarks and trade names are those of their respective owners.



All listed brands are trademarks of the corresponding companies. Errors and omissions excepted, and subject to technical changes. Our general terms of delivery and payment are applied.

## Documents / Resources

	<p><a href="#">hama 00004639 BRS3 Bluetooth Remote Shutter</a> [pdf] Instruction Manual 00004639, BRS3, Bluetooth Remote Shutter</p>
	<p><a href="#">hama 00004639 BRS3 Bluetooth Remote Shutter</a> [pdf] Instruction Manual 00004639, BRS3, Bluetooth Remote Shutter, BRS3 Bluetooth Remote Shutter, 00004639 Bluetooth Remote Shutter, 00004639 BRS3 Bluetooth Remote Shutter</p>

## References

- [h.hama.com](http://h.hama.com)
- [h.hama.com](http://h.hama.com)
- [h.hama.com](http://h.hama.com)