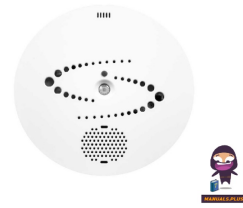


HALO 3C-PC Multi Functional Health Smart Sensor



HALO 3C-PC Multi Functional Health Smart Sensor User Guide

[Home](#) » [HALO](#) » HALO 3C-PC Multi Functional Health Smart Sensor User Guide 

Contents

- [1 HALO 3C-PC Multi Functional Health Smart Sensor](#)
- [2 Product Information](#)
- [3 ABOUT THIS GUIDE](#)
- [4 SETUP PREREQUISITES](#)
- [5 FIRST TIME SETUP](#)
- [6 Contact](#)
- [7 Documents / Resources](#)
 - [7.1 References](#)



HALO 3C-PC Multi Functional Health Smart Sensor



Product Information

Specifications

- **Models:** HALO 2.0, HALO 2C, HALO 3C, HALO 3C-PC
- **Manufacturer:** IPVIDEO CORPORATION
- **Trademark:** HALO SMART SENSOR

FAQ

- **Q:** How can I reset the password for my HALO device?
 - **A:** To reset the password, you will need to access the HALO Device Manager (HDM) and follow the password reset instructions provided in the user manual.
- **Q:** Can I connect multiple HALO devices to one PC?
 - **A:** Yes, you can connect multiple HALO devices to one PC using the HALO Device Manager (HDM) for simultaneous setup and management.

©2024 IPVideo Corporation. All Rights Reserved. This manual or parts thereof may not be reproduced in any form unless permitted by contract or by written permission of IPVideo Corporation.

ABOUT THIS GUIDE

The HALO Quick Start Guide explains how to make initial connections and settings for new HALO Smart Sensor devices.

TRADEMARK ACKNOWLEDGMENTS

IPVIDEO CORPORATION and HALO SMART SENSOR and HALO DEVICE MANAGER are registered trademarks or trademark applications of IPVideo Corporation in various jurisdictions. All other company names and products are trademarks or registered trademarks of their respective companies.

SUPPORT

Should you require any technical assistance, please contact your IPVideo Corporation Authorized Reseller. If your questions cannot be answered immediately, your reseller will forward your queries through the appropriate channels to ensure a rapid response. If you are connected to the Internet, you can download user documentation and software updates at www.halodetect.com

- **Technical Support via Telephone:** (631) 647-9970
- **Technical Support via Email:** techsupport@ipvideocorp.com

Live technical support is available Monday through Friday (excluding holidays) between the hours of 8 AM and 7 PM Eastern Standard Time.

SETUP PREREQUISITES

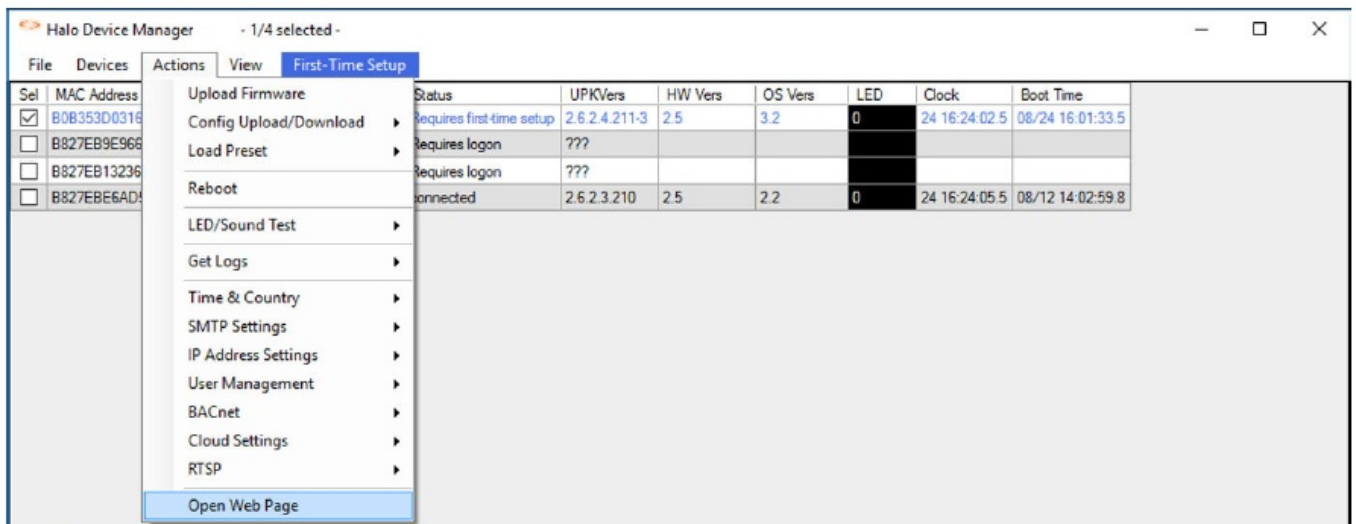
1. Install HDM:
 - Download HDM from the IPVideo website at: <https://halodetect.com/resources/firmware-tools/>
 - Run the installation file.
 - Run the HDM software tool by double clicking on the HALO Device Manager icon.
 - “Accept” EULA.
2. One or more HALO Smart Sensor devices connected to a standard office network where the steps in the HALO Installation Procedure have been followed resulting in confirmation that the device is operating and physically connected to the network.
3. The network will typically include a DHCP server to provide an IP Addresses, in the absence of one HDM can find HALOs with an APIPA (Automatic Private IP Addresses) on a local network.
4. If static addressing is planned, then the correct subnet mask, gateway address, and DNS address must be known.
5. An accessible Windows 10 or higher PC connected to the same network with a Chrome web browser installed.

FINDING HALO SMART SENSORS ON A NETWORK

- Start HALO Device Manager (HDM) on the PC by double clicking the program icon. Please refer to the HDM Guide for connection instructions, available at: <https://halodetect.com/resources/manuals-guides/>
- Select Devices / Device Scan. There should be an IP address for each HALO device on the network (for example, 192.168.1.X).

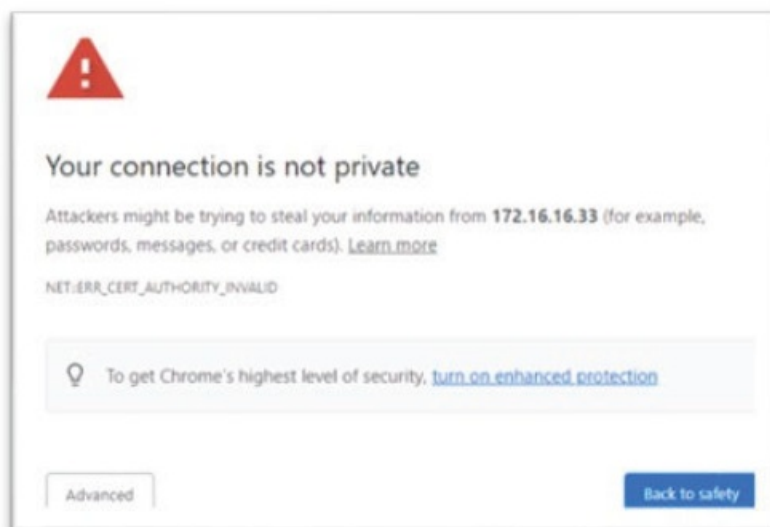


- Select the HALO requiring First Time Setup then select Actions / Open Web Page.



FIRST TIME SETUP

Establishing Connection



- Connecting to a HALO device can be done in two separate ways. It can be done with the HALO Device Manager HDM (see HDM Manual) which is the preferred method for setting up multiple Halos at once.
- It can also be done by typing the HALO device's IP address in Google Chrome
- Upon first time logging in you should receive a warning saying, "Your Connection is not private". The warning

means the browser does not know who the server is however the connection is now encrypted and secure.

- Click “Advanced” then click “Proceed to <ip address> (unsafe)”.



Sign in

http://172.16.16.33

Your connection to this site is not private

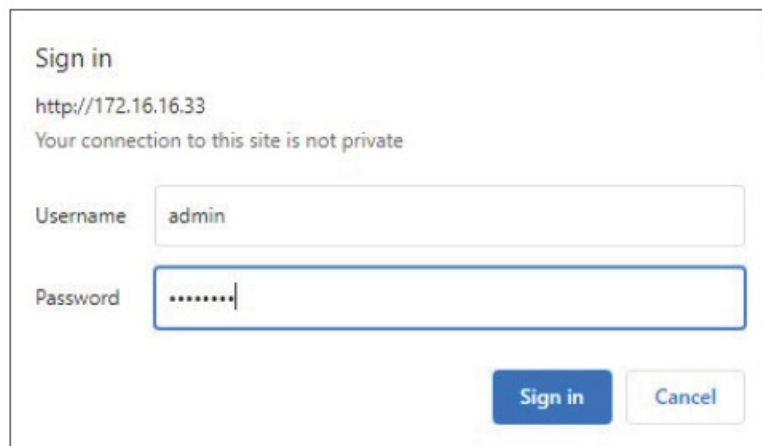
Username admin

Password

Sign in Cancel

- A popup will appear asking for a username and password. Type “admin” for the username and “changeme” for the password. Click “Sign in”.

Connecting to a HALO device can be done in two separate ways.



Sign in

http://172.16.16.33

Your connection to this site is not private

Username admin

Password

Sign in Cancel

1. It can be done by selecting HALO Device Manager (HDM) and pressing Open Web Page from the Actions drop menu. This is the preferred method for setting up multiple HALOs at once.
2. It can also be done by typing the HALO device’s IP address in Google Chrome. A popup will appear asking for a username and password.

Type “admin” for the username and “changeme” for the password. Click “Sign in”.

Initial Device Setup

Click here to switch to the HTTPS version of this form for increased security



Initial Device Setup

Administrator Credentials

Username


Username must be at least 5 characters and contain no spaces or special characters

Password

Confirm Password

Next

- The following prompt will pop up. For security reasons it is recommended to click the blue text saying, “Click here”. This will ensure passwords are not visible on the network.



Your connection is not private

Attackers might be trying to steal your information from **172.16.16.33** (for example, passwords, messages, or credit cards). [Learn more](#)

NET-ERR_CERT_AUTHORITY_INVALID

To get Chrome's highest level of security, [turn on enhanced protection](#)

Advanced Back to safety

Hide advanced Back to safety

This server could not prove that it is **172.16.16.33**; its security certificate is not trusted by your computer's operating system. This may be caused by a misconfiguration or an attacker intercepting your connection.

[Proceed to 172.16.16.33 \(unsafe\)](#)

CLICK HERE

If you followed the security recommendations a popup from Chrome will give a warning saying, “Your Connection is not private”. The warning means the browser does not know who the server is but the connection is actually secure.

Click “Advanced”, then click “Proceed to <ip address> (unsafe)”.

Administrator Credentials

Initial Device Setup


Administrator Credentials

Username

Password

Confirm Password

Next



Initial Device Setup Administrator Credentials

Username

Username must be at least 5 characters and contain no spaces or special characters

Password

Confirm Password

Next

- Type in the username “admin” and “changeme” which was used earlier.
- Click Next.

- Username must be at least 5 characters and contain no spaces or special characters

NOTE

- The search bar will say “Not secure | https”. This is safe and preferred.

Device Name & Timezone

Initial Device Setup **Device Name & Timezone**

Specify a unique name for the HALO Smart Sensor. This name will be used as the device's identity in the Web Browser, Notifications, HALO Cloud, and 3rd Party Integrations.

Device Name	Halo Device
Timezone	New York (Eastern)
Country	United States
Language	English

Select the time zone, country and language from the dropdown menus that align with where the HALO Smart Sensor will be physically installed.

[Next](#)

- Fill in the Device Name, Timezone, and Country and Language preference.
- Click Next

Event Selection

Initial Device Setup **Event Selection**

Preset Event Groups (events vary with model)

<input checked="" type="checkbox"/> Vaping	(Vape, THC, Masking)
<input type="checkbox"/> Smoking	(Smoking)
<input checked="" type="checkbox"/> Security	(Gunshot, Aggression, Tamper, Help, Panic, Motion, People_Count)
<input checked="" type="checkbox"/> Environmental - Basic	(Health_Index, AQI, PM2.5, TVOC, CO2, Humidity, Temp)
<input type="checkbox"/> Environmental - Advanced	(PM1, PM10, NO2, Pressure, Light, Sound, CO, NH3)

[Back](#) [Next](#)

- Choose the preset event groups for the initial deployment.
- Click Next.

Email Provider

SMTP Email Settings

Select Email Provider: Custom ▾

Port: 25

Password:

HALO SMART SENSOR

Initial Device Setup **SMTP Email Settings**

Select Email Provider: Custom ▾

Host: Port: 25

Username: Password:

Security: ☐ Normal ☒ High (port 465 only)

Sender: email@email.com

Recipients: email@email.com,email2@email2.net

☒ Also send test email(s) ☒ Auto Correct Email Status: Unconfigured

- Another Initial Device Setup prompt will appear. This is the last one. Start by clicking “Select Email Provider” in the top right corner and select the email provider to use with the HALO device.

HALO SMART SENSOR

Initial Device Setup **SMTP Email Settings**

Select Email Provider: Outlook ▾

Host: smtp-mail.outlook.com Port: 587

Username: Password:

Security: ☒ Normal ☐ High (port 465 only)

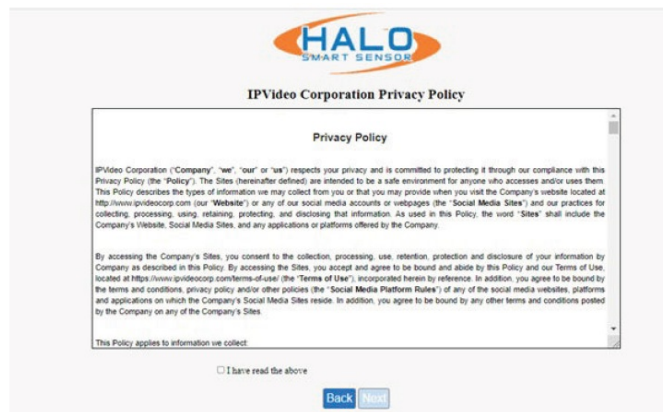
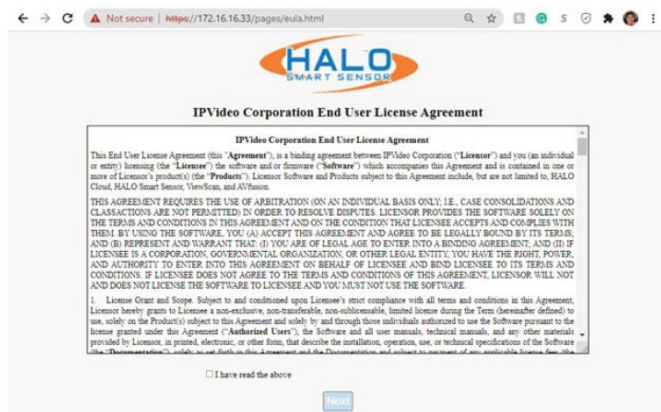
Sender: email@email.com

Recipients: email@email.com,email2@email2.net

☒ Also send test email(s) ☐ Auto Correct Email Status: Unconfigured

Once an Email Provider is selected, information on Host, Port, Security, and Auto Correct will update. In most cases “Auto Correct” will not be necessary as the server may block the email due to “Auto Correct” trying many ways to find the correct settings. Fill in other requested information then click “Save and Test Connection” then click “Next”.

License Agreements



- IPVideo Corporation's License Agreement and Privacy Policy will pop up next. After reading the following information click "I have read the above" and then "Next".

Save Settings & Reboot

I have read the preceding License Agreement and Privacy Statements.

Required Information

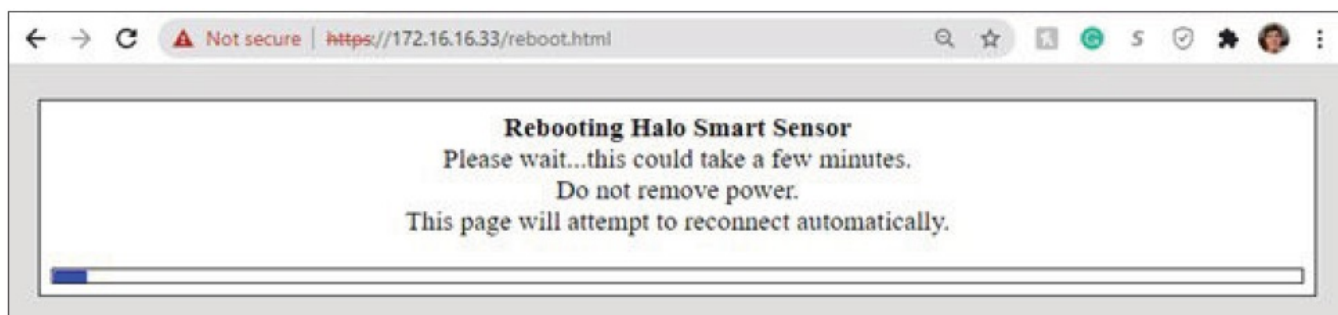
Name:

Organization:

Email:

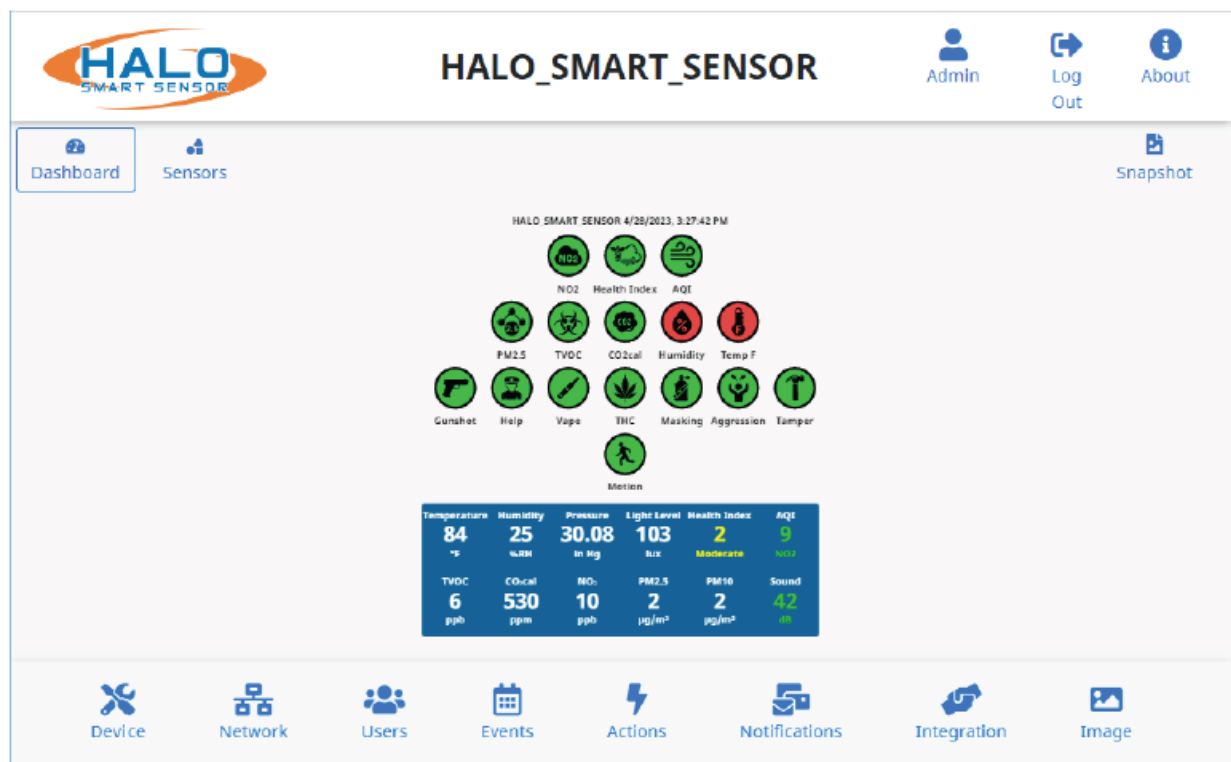
Phone:

☒ Open Tour



- Whomever read the last two forms shall fill out the required information.
- Once filled out click "Save Settings and Reboot Device".
- A loading screen will appear of the HALO Smart Sensor rebooting.

Final Setup




- The HALO Device has been setup for the first time.
- For more information, please refer the HALO Administration Manual which can be found at: <https://halodetect.com/resources/manuals-guides/>

Contact

- 1490 North Clinton Ave, Bay Shore NY 11706
- ipvideocorp.com
- info@ipvideocorp.com
- 631.969.2601

Documents / Resources

	<p>HALO 3C-PC Multi Functional Health Smart Sensor [pdf] User Guide</p> <p>3C-PC Multi Functional Health Smart Sensor, 3C-PC, Multi Functional Health Smart Sensor, Functional Health Smart Sensor, Health Smart Sensor, Smart Sensor</p>
---	---

References

- [IPV SentryERS, HALO Smart Sensor | IPVideo | IOT Sensors](#)

- [H Health, Safety Monitoring - Vape Detector | HALO Smart Sensor](#)
- [H HALO - Deep Dive into HALO Resources - News, Blog, Videos](#)
- [User Manual](#)

[Manuals+](#), [Privacy Policy](#)

This website is an independent publication and is neither affiliated with nor endorsed by any of the trademark owners. The "Bluetooth®" word mark and logos are registered trademarks owned by Bluetooth SIG, Inc. The "Wi-Fi®" word mark and logos are registered trademarks owned by the Wi-Fi Alliance. Any use of these marks on this website does not imply any affiliation with or endorsement.