



HALCYON R747 Series Curve Smart Tilt Instruction Manual

[Home](#) » [HALCYON](#) » HALCYON R747 Series Curve Smart Tilt Instruction Manual 

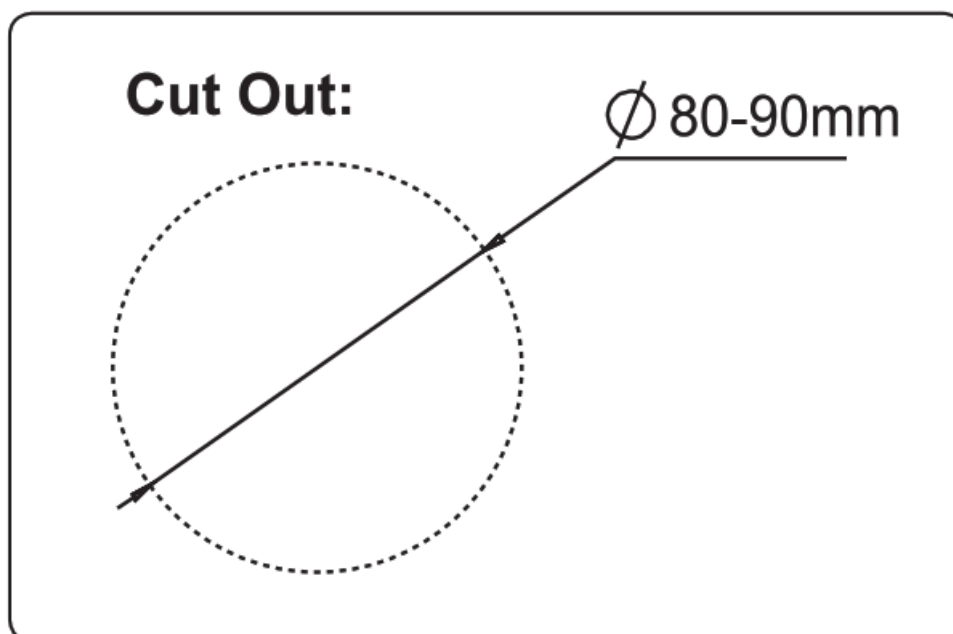
HALCYON

INSTALLATION R747 W3K

Contents

- [1 Installation Directions](#)
- [2 Approved Clearances](#)
- [3 Documents / Resources](#)
- [4 Related Posts](#)

Installation Directions



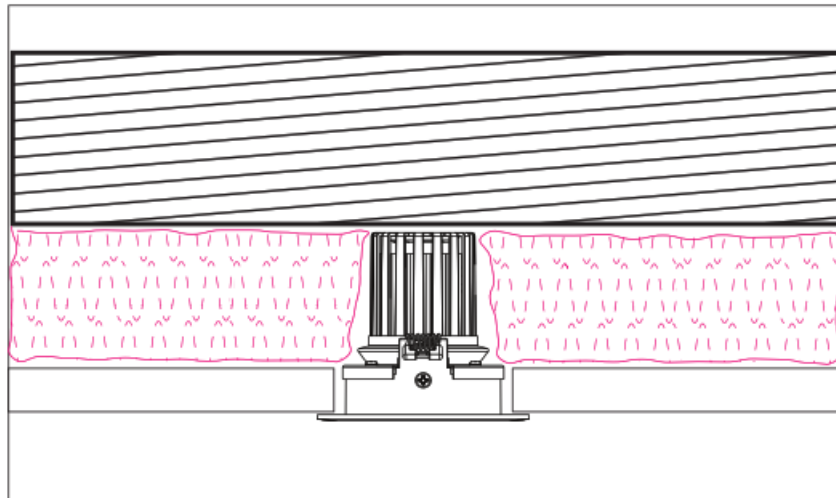
1. Switch off mains power supply
2. Connect Dimmable Driver to mains voltage cable (L, N) Do not connect downlight to driver if driver is live.
Inrush current from live driver will cause instant downlight failure. Do not switch secondary side.
3. Carefully install downlight into Precut 80-90mm hole.
4. Turn on mains power and switch on lighting circuit.

Approved Clearances

Note: 0mm required but 25mm always recommended for optimum product lifespan through effective heat dissipation.

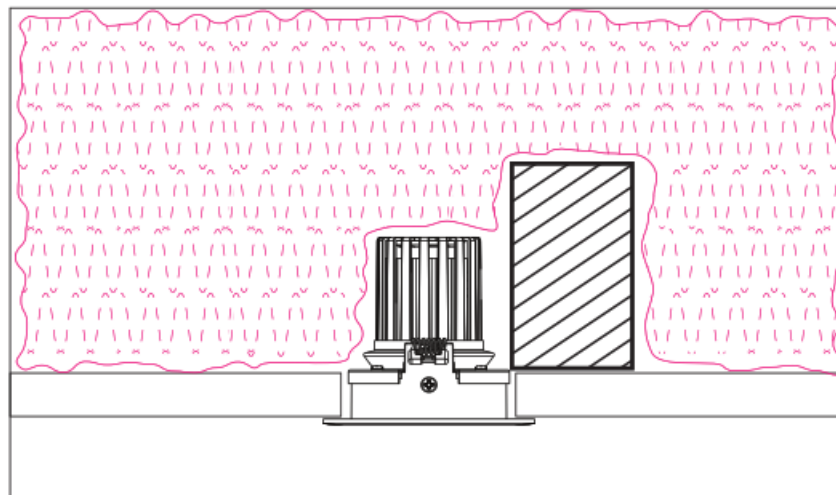
Example 1:

0mm Approved Height Clearance. Building element abutting rear, insulation abutting sides of fitting.

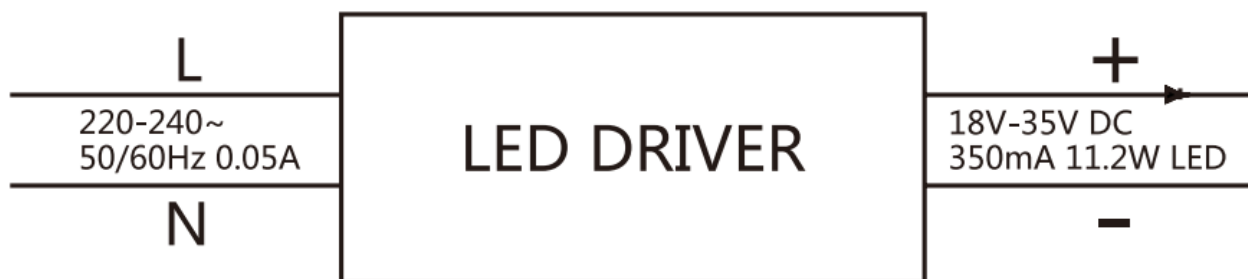


Example 2:

0mm Approved Side Clearance. Building element abutting side of fitting, insulation abutting and covering fitting.




Driver is designed to be covered and abutted with IC / IC-F approved insulation.



CLASSIFICATION SHEET/IC

Manufacturer / Supplier	Halcyon Lighting Ltd
Product Code	R747 W3K
Product Type	LED Recessed Luminaire
Primary Voltage	220-240V~50/60Hz
Secondary Voltage	2600mA 36VDC Constant Current
Wattage	9.5W
Ingress Protection Rating	IP44

Classification		IC — building insulation that can safely be continuously exposed to 90°C allowed to abut and cover the luminaire.
----------------	---	---

In the vicinity of the recessed luminaire, use an insulation product that:

(a) Maintains its dimensions and structural integrity when exposed to a temperature of 90°C; and (b) Withstands a 30-second needle flame test carried out in accordance with AS/NZS 60695.11.5 with the flame applied to all surfaces of the sample.

**Rear of fitting may abut structural members and building elements.
Do not install through or directly into joist, beam, rafter or ceiling batten.**

Side Clearance from heatsink to building element (e . g . timber, joist or batten)	SCB: 0mm
Height Clearance from heatsink to building element (e . g . timber, joist or batten)	HCB: 0mm
Minimum insulation clearance to building element	MIC: 0mm

Recessed luminaires and their associated equipment may pose a risk of fire or damage to property if not installed and maintained correctly. Halcyon recommends a clearance of 25mm to building elements for optimum lifespan. Halcyon IC rated luminaires are completely safe to install in sarked timber ceiling linings. Halcyon accepts no responsibility if the timber used is not treated correctly and dries out , crack or warps over time due to the constant low heat from the aforementioned “IC Rated” LED recessed lighting.

This data sheet contains information necessary to ensure compliance with the New Zealand Electrical Code of Practice for Installation and Maintenance of Recessed Luminaires and Associated Equipment AS/NZS 60598.2.2:2001

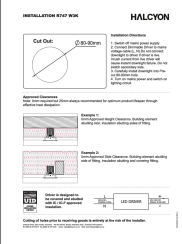
Cutting of holes prior to receiving goods is entirely at the risk of the installer.

10 Basalt Place, East Tamaki, Auckland, PO Box 58-501, Botany, Manukau 2163, Auckland, New Zealand

Ph (0064 9) 273-9177 Fax (0064 9) 2739155

Email: sales@halcyon.co.nz Web: www.halcyonlights.co.nz

Documents / Resources

	<p>HALCYON R747 Series Curve Smart Tilt [pdf] Instruction Manual R747 Series Curve Smart Tilt, R747 Series, Curve Smart Tilt, Smart Tilt</p>
---	--

[Manuals+](#).