



HALCYON LED356 LED Light with Sensor Instruction Manual

[Home](#) » [HALCYON](#) » HALCYON LED356 LED Light with Sensor Instruction Manual 

Contents

- [1 HALCYON LED356 LED Light with Sensor](#)
- [2 LED356 WITH SENSOR INSTALLATION INSTRUCTIONS](#)
- [3 Documents / Resources](#)
- [4 Related Posts](#)

HALCYON

HALCYON LED356 LED Light with Sensor



LED356 WITH SENSOR INSTALLATION INSTRUCTIONS

1. Ensure Mains power is disconnected prior to connection
2. Remove diffuser from base rotating in an anticlockwise direction (Diagram 1)
3. Position base plate with mains feed cable fed through protection grommet
4. Screw to ceiling or appropriate surface with screws supplied or using other appropriate method (Diagram 2)
5. Terminate feed to terminal or junction box (note product is non-dimmable) (Diagram 3)

6. Adjustment of sensor (Diagram 4)

Detection area is max. 10 metres (Preset value is 5 metres)

Hold time adjustable from 5 seconds to 30 minutes (Preset value is 30 seconds)

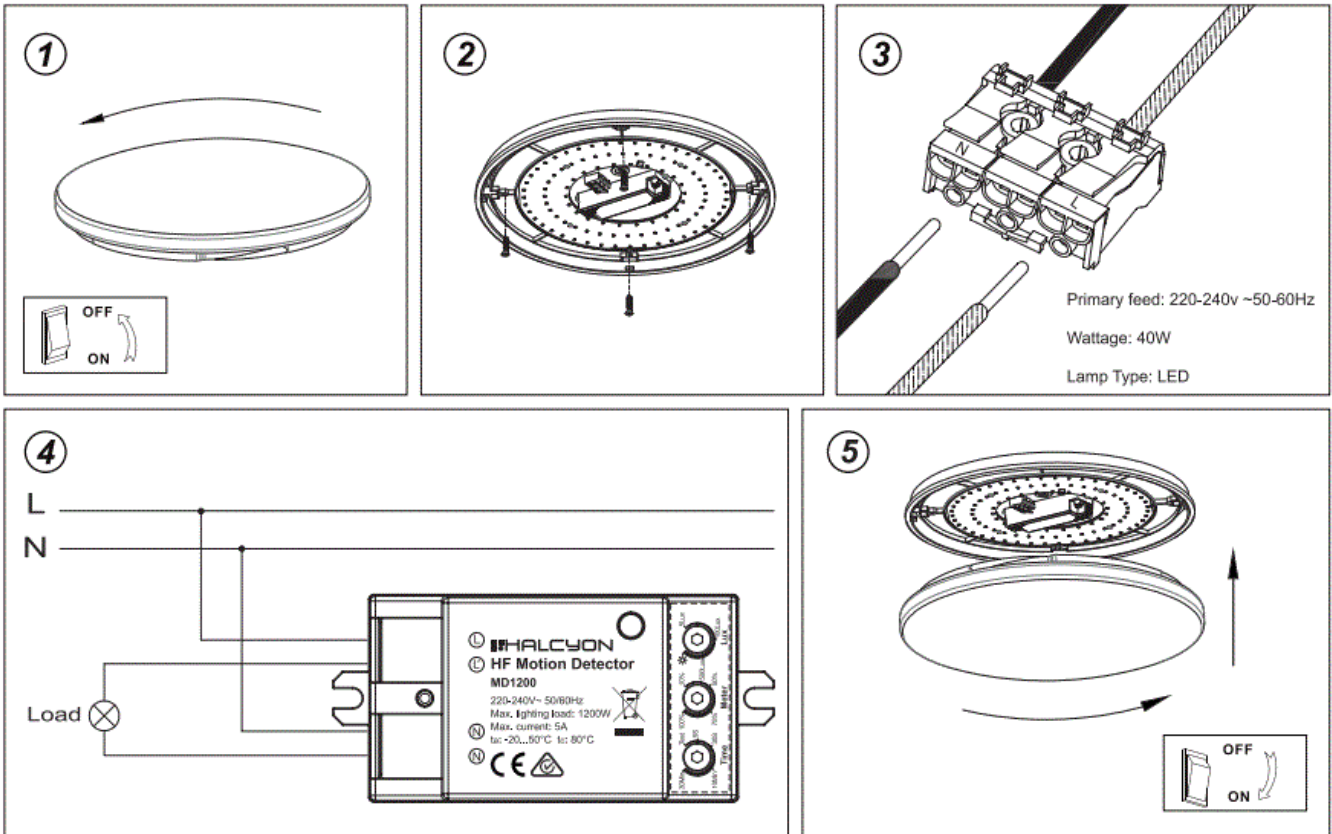
Daylight sensor with adjustable threshold (Preset value is 100 Lux)

7. Test luminaire illuminates and replace diffuser ensuring four keyways are positioned correctly on base tabs and tighten diffuser with clockwise rotation (Diagram 5)

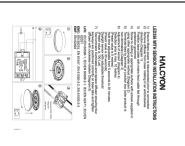
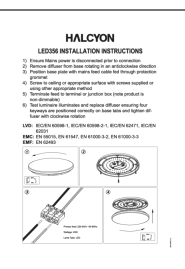
LVD: IEC/EN 60598-1, IEC/EN 60598-2-1, IEC/EN 62471, IEC/EN 62031

EMC: EN 55015, EN 61547, EN 61000-3-2, EN 61000-3-3

EMF: EN 62493



Documents / Resources

	<p>HALCYON LED356 LED Light with Sensor [pdf] Instruction Manual</p> <p>LED356, LED356 LED Light with Sensor, LED Light with Sensor, Light with Sensor</p>
	<p>HALCYON LED356 LED Light [pdf] Instruction Manual</p> <p>LED356, LED356 LED Light, LED Light, Light</p>