




**Lighting HG-  
L208T-22 Bluetooth  
Sensor LED Troffer**



# Halcon Lighting HG-L208T-22 Bluetooth Sensor LED Troffer Installation Guide

[Home](#) » [Halcon Lighting](#) » Halcon Lighting HG-L208T-22 Bluetooth Sensor LED Troffer Installation Guide 

## Contents

- [1 Halcon Lighting HG-L208T-22 Bluetooth Sensor LED Troffer](#)
- [2 Specifications](#)
- [3 FAQ](#)
- [4 CCT AND WATT CHANGING](#)
- [5 Installation Instruction](#)
- [6 Wiring Diagram](#)
- [7 Documents / Resources](#)
  - [7.1 References](#)
- [8 Related Posts](#)



## Halcon Lighting HG-L208T-22 Bluetooth Sensor LED Troffer



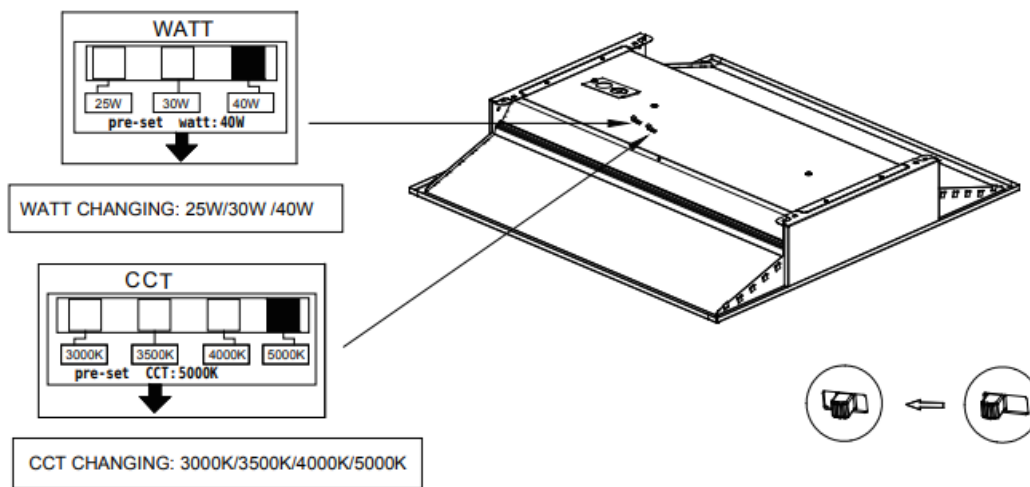
## Specifications

- **Model No.:** HG-L208T-22
- LED Troffer
- **Wattage:** 25W, 30W, 40W (pre-set watt: 40W)
- **CCT (Correlated Color Temperature):** 3000K, 3500K, 4000K, 5000K (pre-set CCT: 5000K)

## FAQ

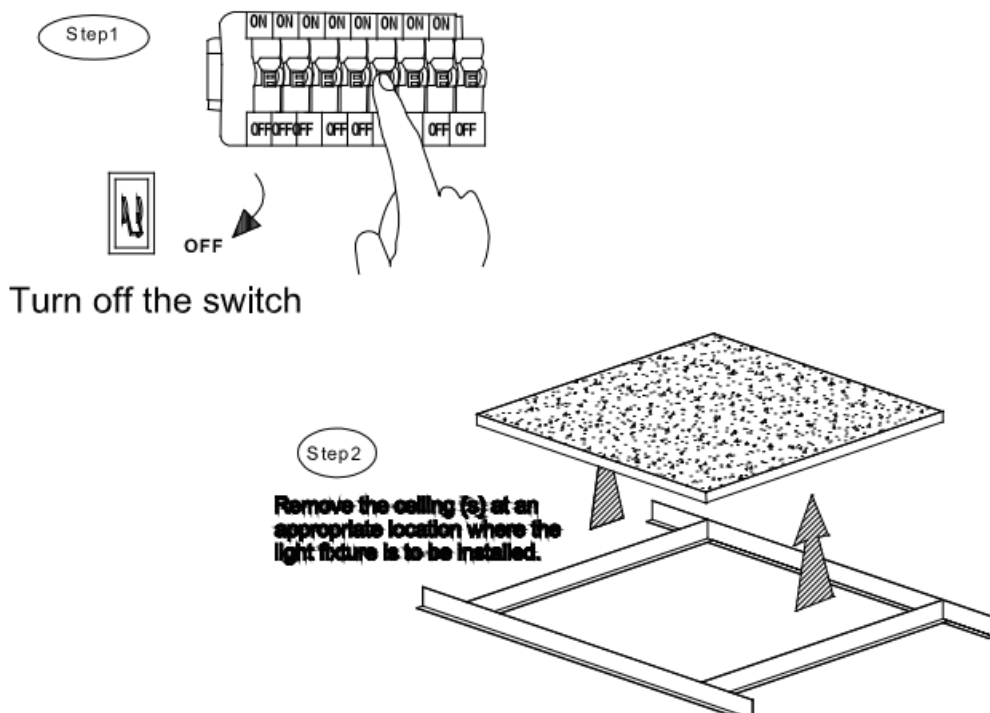
- **Q:** How can I reset the pre-set wattage or CCT?
- **A:** To reset the pre-set wattage or CCT, turn off the power to the LED troffer for a few seconds and then turn it back on. The settings should reset to their default values.

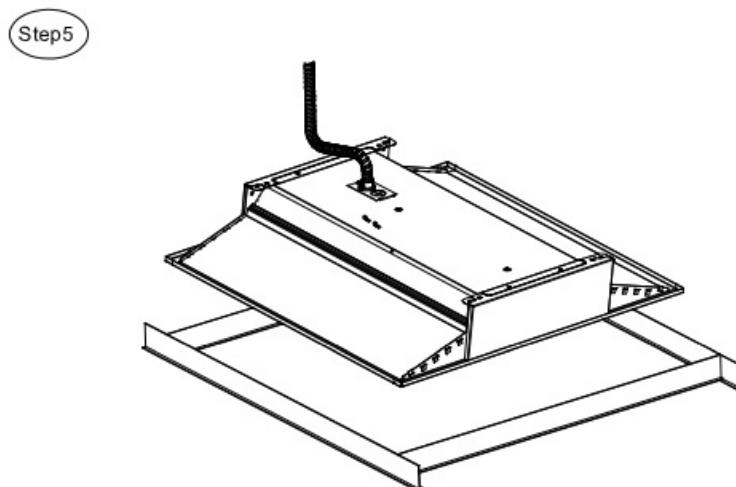
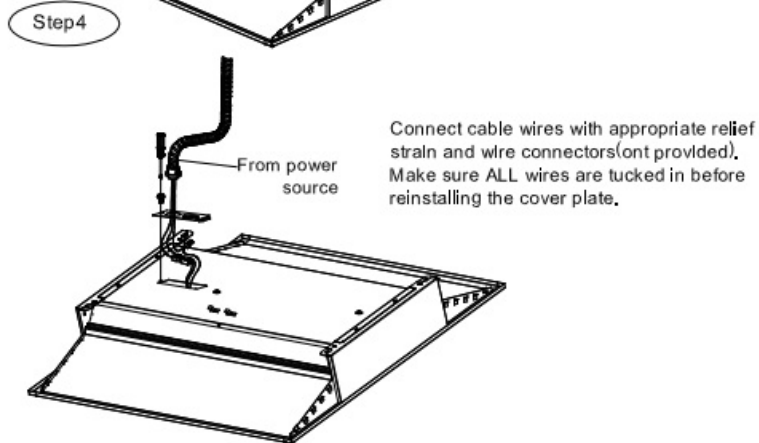
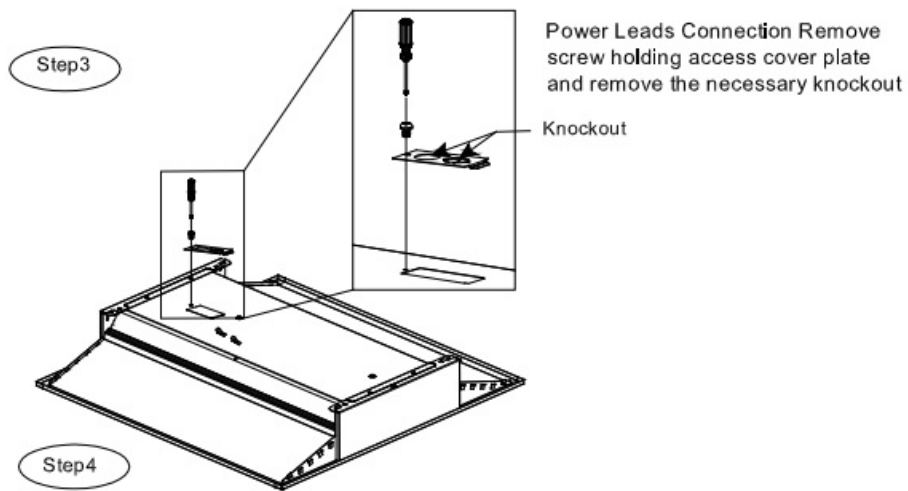
## CCT AND WATT CHANGING



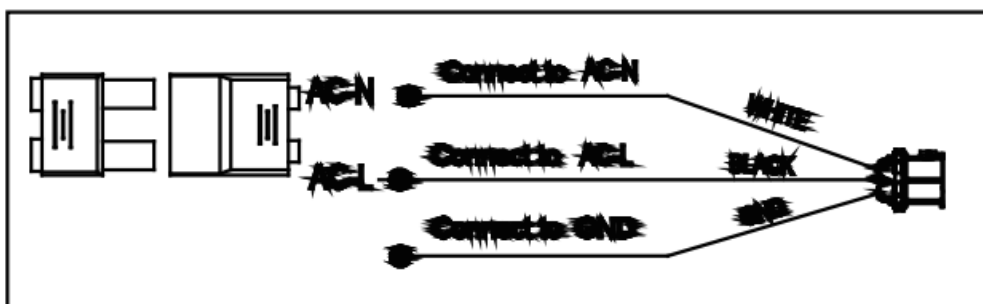
## Installation Instruction

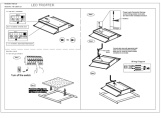
### A.T-Grid ceilings installation





## Wiring Diagram





[Halcon Lighting HG-L208T-22 Bluetooth Sensor LED Troffer](#) [pdf] Installation Guide  
HG-L208T-22 Bluetooth Sensor LED Troffer, HG-L208T-22, Bluetooth Sensor LED Troffer, Sens  
or LED Troffer, LED Troffer, Troffer

## References

- [User Manual](#)

[Manuals+](#), [Privacy Policy](#)

This website is an independent publication and is neither affiliated with nor endorsed by any of the trademark owners. The "Bluetooth®" word mark and logos are registered trademarks owned by Bluetooth SIG, Inc. The "Wi-Fi®" word mark and logos are registered trademarks owned by the Wi-Fi Alliance. Any use of these marks on this website does not imply any affiliation with or endorsement.