



**C2103-504FT  
LED Vapor Tight  
Light With  
Motion Sensor**



# Halcon Lighting C2103-504FT LED Vapor Tight Light With Motion Sensor Installation Guide

[Home](#) » [Halcon Lighting](#) » Halcon Lighting C2103-504FT LED Vapor Tight Light With Motion Sensor Installation Guide 

## Contents

- [1 Halcon Lighting C2103-504FT LED Vapor Tight Light With Motion Sensor](#)
- [2 Installation Instructions](#)
- [3 Specifications](#)
- [4 FAQ](#)
- [5 Documents / Resources](#)
  - [5.1 References](#)
- [6 Related Posts](#)



## Halcon Lighting C2103-504FT LED Vapor Tight Light With Motion Sensor

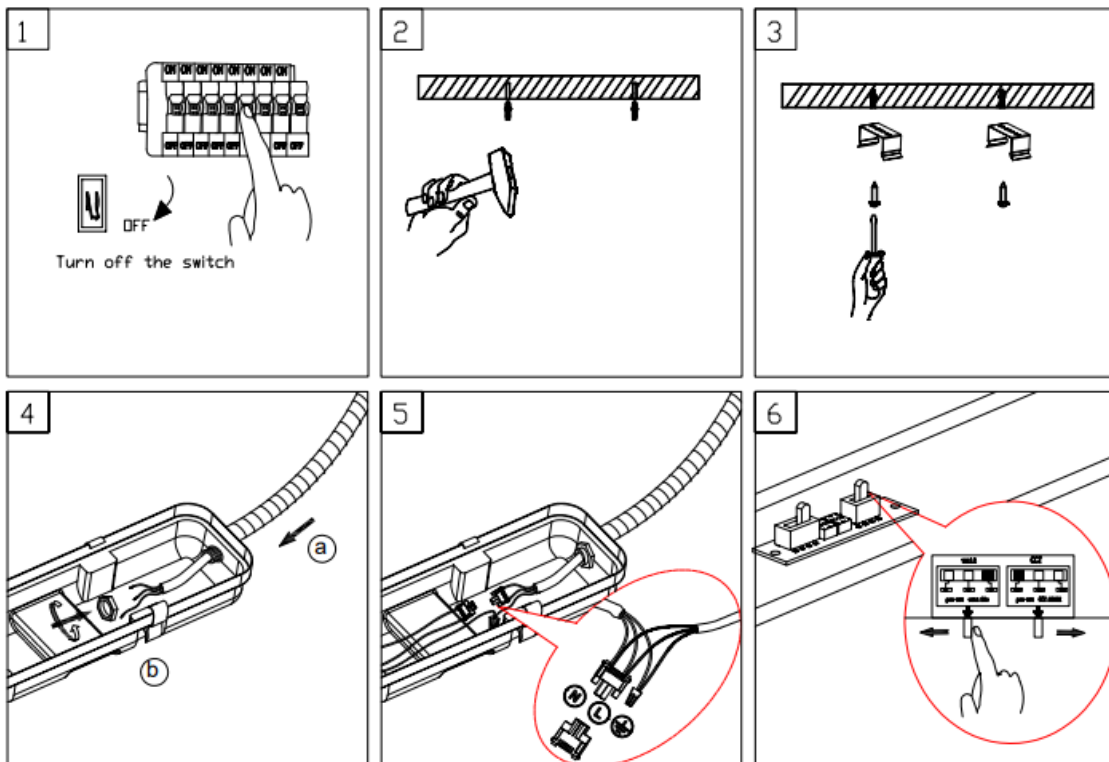


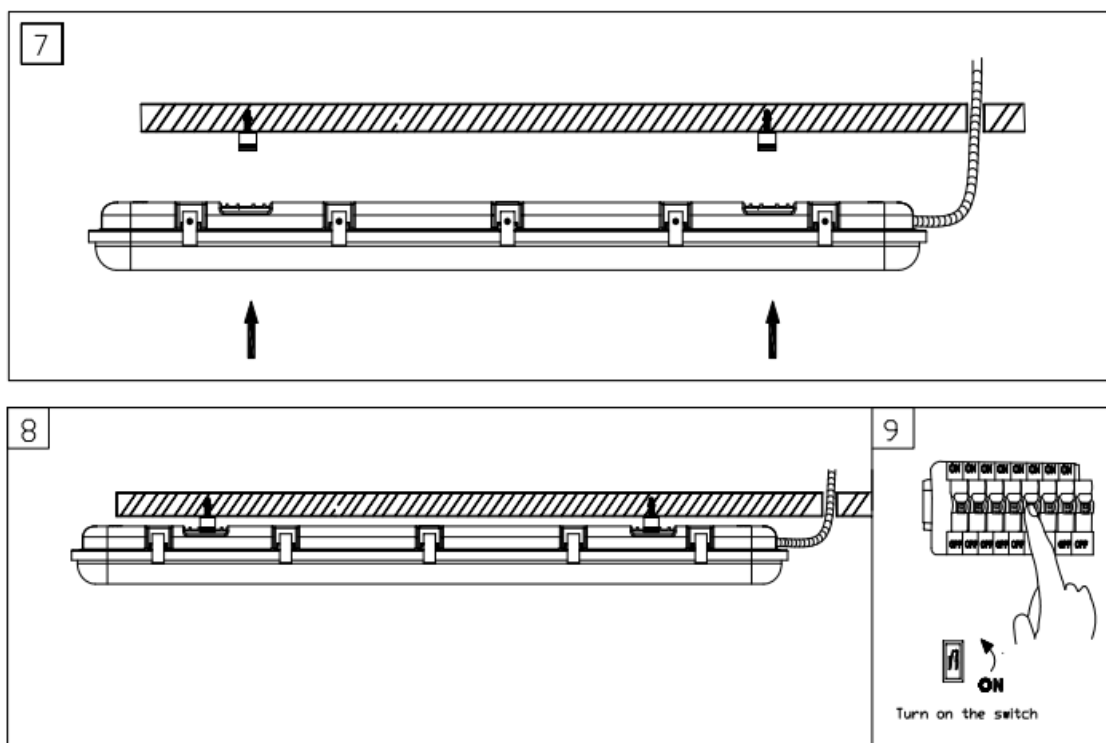
**Model No.:** C2103-504FT

LED Vapor Tight Light

## Installation Instructions

1. Ensure the power is turned off before starting the installation.
2. Remove the lens from the fixture by unclipping the latches on both sides.
3. Mount the fixture to the ceiling or wall using the provided brackets and screws.
4. Connect the wires from the power source to the fixture wires using wire nuts. Ensure the connections are secure and properly insulated.
5. Reattach the lens to the fixture by clipping the latches back into place.
6. Turn the power back on and test the light to ensure it is working correctly.





## Specifications

Specification	Details
Model Number	C2103-504FT
Type	LED Vapor Tight Light
Power	50W
Voltage	120-277V
Color Temperature	5000K
Lumen Output	6000 lm
Dimensions	48" x 5" x 4"
Weight	4.5 lbs

## FAQ

**Q: Can this light be used outdoors? A: Yes, the LED Vapor Tight Light is designed to be weather-resistant and suitable for both indoor and outdoor use. Q: What is the warranty period for this light? A: The light comes with a 5-year warranty. Q: Can the light be dimmed? A: Yes, this model is compatible with most standard dimmers. Q: What is the expected lifespan of the LED light? A: The LED light has an expected lifespan of 50,000 hours. Q: Is the fixture easy to install? A: Yes, the fixture comes with all necessary mounting hardware and detailed installation instructions.**

**A: Yes, the LED Vapor Tight Light is designed to be weather-resistant and suitable for both indoor and outdoor use.**

**Q: What is the warranty period for this light?**

**A: The light comes with a 5-year warranty.**

**Q: Can the light be dimmed?**

**A: Yes, this model is compatible with most standard dimmers.**

**Q: What is the expected lifespan of the LED light?**

**A: The LED light has an expected lifespan of 50,000 hours.**

**Q: Is the fixture easy to install?**

**A: Yes, the fixture comes with all necessary mounting hardware and detailed installation instructions.**

**Documents / Resources**

	<p><a href="#">Halcon Lighting C2103-504FT LED Vapor Tight Light With Motion Sensor</a> [pdf] Installation Guide</p> <p>C2103-504FT LED Vapor Tight Light With Motion Sensor, C2103-504FT, LED Vapor Tight Light With Motion Sensor, Tight Light With Motion Sensor, With Motion Sensor, Motion Sensor, Sensor</p>
---	--

**References**

- [User Manual](#)

[Manuals+.](#) [Privacy Policy](#)

This website is an independent publication and is neither affiliated with nor endorsed by any of the trademark owners. The "Bluetooth®" word mark and logos are registered trademarks owned by Bluetooth SIG, Inc. The "Wi-Fi®" word mark and logos are registered trademarks owned by the Wi-Fi Alliance. Any use of these marks on this website does not imply any affiliation with or endorsement.