



# HAIFUAN HFAM10B-L-NB Bluetooth Keyless Code Door Lock User Manual

[Home](#) » [HAIFUAN](#) » HAIFUAN HFAM10B-L-NB Bluetooth Keyless Code Door Lock User Manual 

## Contents

- 1 HAIFUAN HFAM10B-L-NB Bluetooth Keyless Code Door Lock
- 2 Technical Parameters
- 3 Product Structure Map
- 4 Installation Instructions
- 5 System Operation
- 6 Operation On App
- 7 Login in TTLOCK(Turn Bluetooth On)
- 8 Operation On Keypad
- 9 Others
- 10 Video Instruction
- 11 FCC Warning
- 12 Documents / Resources
  - 12.1 References
- 13 Related Posts

# HAIFUAN

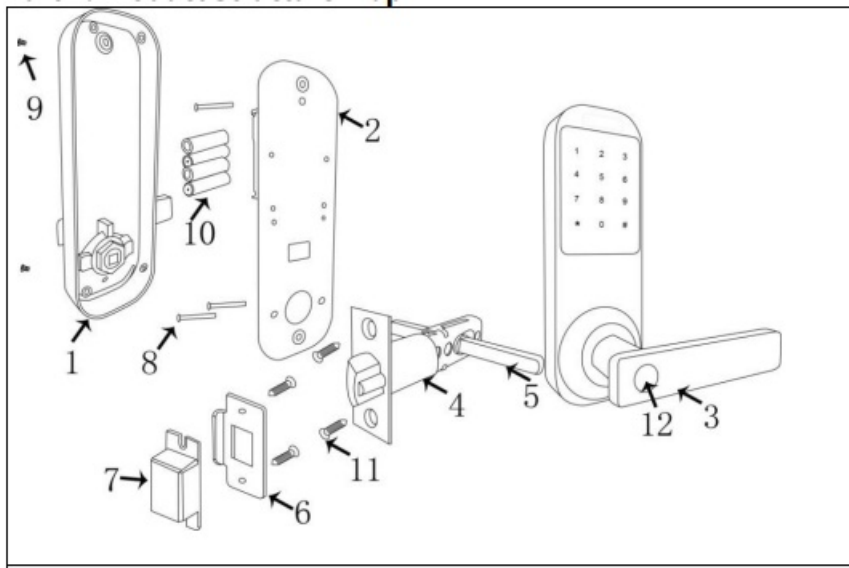
HAIFUAN HFAM10B-L-NB Bluetooth Keyless Code Door Lock



**Technical Parameters**

Product Type	HFAM10B-L-NB
Dimensions	8.27"*2.76"*4.53"(210*70*115MM)
Communication Methods	Bluetooth 5.0 BLE
Supporting systems	Android 4.3/ISO7.0 above
Working Temperature	-20~60 Celsius (-4~140 Fahrenheit)
Material	Zinc Alloy
Weight	5.5LBS (2.5KG)
Operating Voltage	4* 1.5V“AA”Alkaline Batteries
Low Battery Voltage	4.8V
Static Current	≤60μA
Dynamic Current	≤200mA
Ways to open	Password, Mechanical key, M1 Card
User Capacity	200 cards, 150 code users, unlimited users on app
Backset	2 3/8"and 2 3/4" adjustable (60mm or70mm)
Door Thickness	1.2"-2.75"(30mm—70mm)

**Product Structure Map**



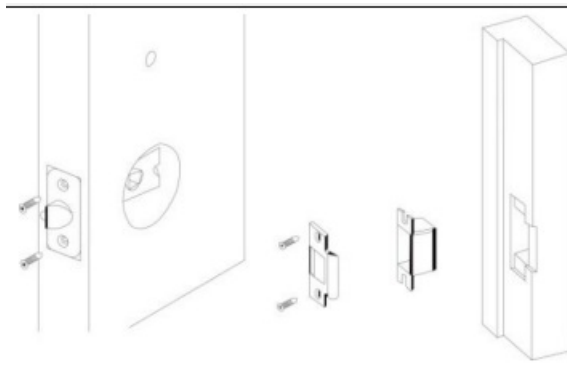
1. back panel
2. inner back plate
3. front panel
4. latch
5. spindle
6. strike plate
7. plastic strike plate case
8. fixing screws of back plate
9. screws
10. batteries
11. fixing screw
12. key hole cover

## Installation Instructions

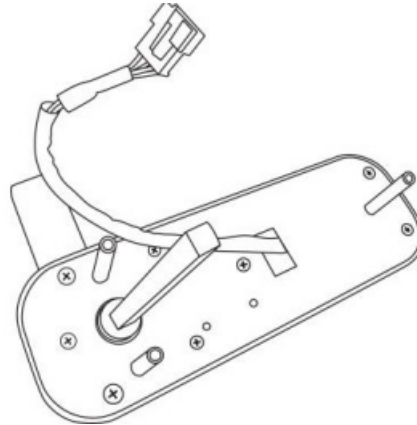
- Drilling holes
  - Drill holes according to the drilling template
  - Drill holes on the door frame to install strike plate



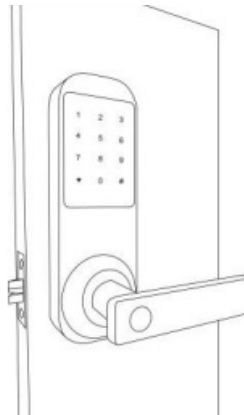
- Install latch and strike plate
  - Fix latch on the door broadside with two screws
  - Fix the plastic case and strike plate on the door frame with two screws



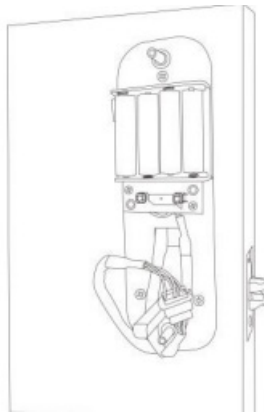
- Install square shaft to front panel
  - Put the spindle into square hole(on the back of front panel), install 3 screw tubes
  - Fix the square shaft with the pin in fitting screw bag(make sure it won't move)



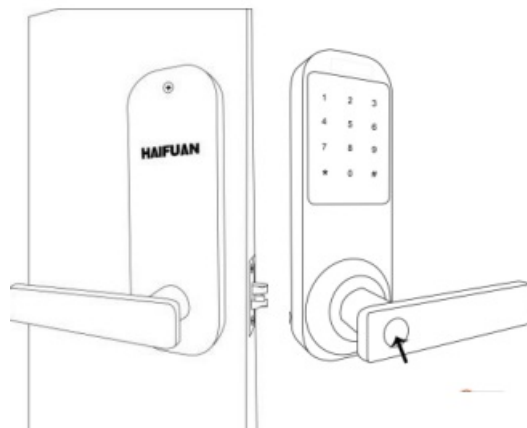
- Install front panel
  - Place water proof rubber under front panel, Install front panel, pull the connect data line through the hole



- Install back inner plate
  - Place water proof rubber under back inner plate, Fix 3 screws
  - Connect data line of the front and back panel, get the extra line into door hole or fix it around the spindle(do not impact the movement of spindle)
  - Install batteries
  - Make adjustment if necessary, fasten the screws



- Install back panel and test after installation
  - Fix 2 screws
  - Installation finished
  - Test back handle to open the lock.
  - Input initial master code “123456” “#” on front panel to open it. (if this code doesn't work, press the reset button(under the back panel) for 6 seconds , then input 000 # to reset it, try 123456 # again)
  - Remove the key hole cover and test keys



## System Operation

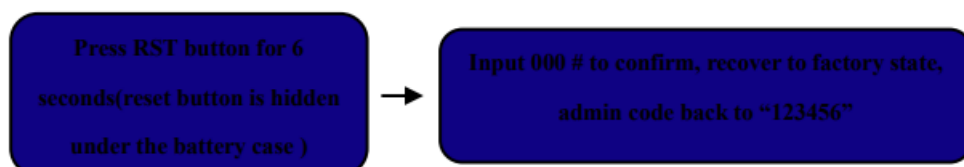
### Outline

- Admin code: default admin code: 123456
- User Capacity: 200 cards(13.56Mhz mifare card), 150 code users(4-9 digits), unlimited app users The lock can be operated on keypad or by app via bluetooth, if gateway is installed(the gateway is not included in the lock package, require additional purchase), it can be operated remotely(check 4.3 for details )

### System Initialization

Default admin code is “123456”. We must change the default admin code to add users if you want to operate on keypad, or you can operate on app via Bluetooth(check 4.2 for details)

### Initialization



Input “123456 #” to open the lock if the lock is in factory mode, it is very important to make sure the lock is in factory mode when you first receive it.

## Operation On App

### Download App

Search “TTLOCK” on app store to download the software or scan the QR code bellow to download it



### Login in TTLOCK(Turn Bluetooth On)

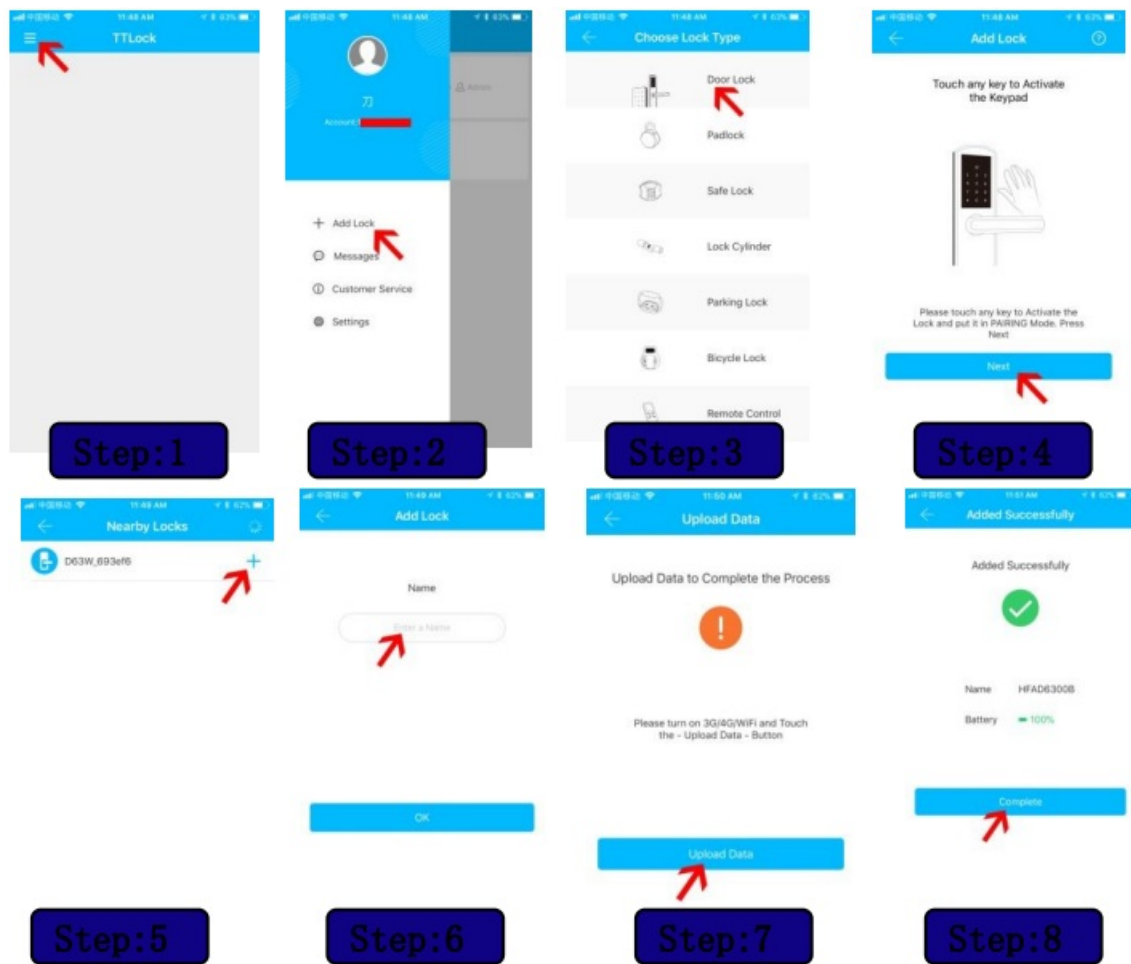
#### Register app

This app support more than 200 countries. Can be registered by phone number or email.



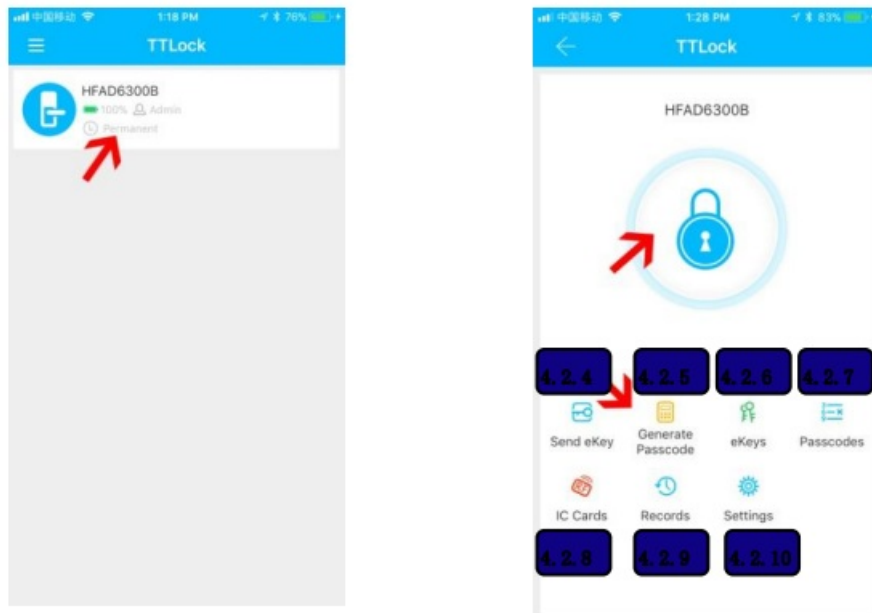
### Connect lock with app(Turn Bluetooth on)

- Step:1 click on the left up corner button to show the page on step 2
- Step:2 click on add locks
- Step:3 click on door locks
- Step:4 click on next
- Step:5 touch the keypad to wake up the lock. If the “+” doesn’t appear, input \*83#→master code# (check 5.7 for details), then check this screen again
- Step:6 give the lock a name
- Step:7 Upload dates
- Step:8 Added successful



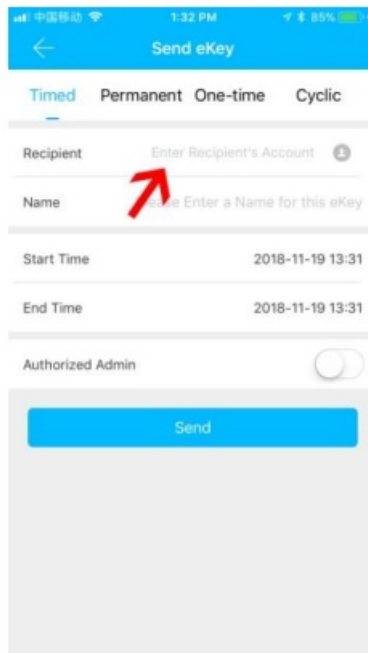
### Unlock by app

Tap on the lock just added, tap the lock button to unlock (make sure the Bluetooth is turned on)



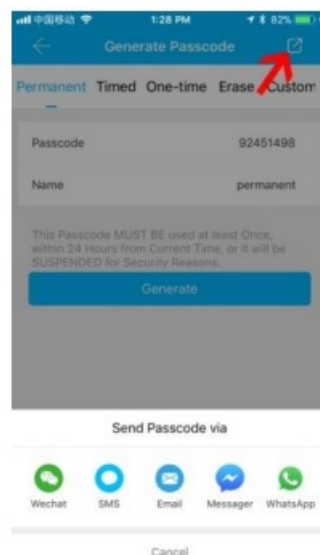
### Send ekey

- We can send timed, permanent, one-time, or cyclic ekey to others,
- The recipient should also registered this app, when the ekey is sent,
- The recipient will be able to login in the app to unlock the device.



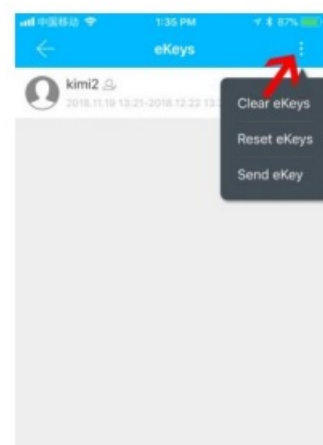
- Generate Passcode

We can generate varies types of codes, such as permanent, timed, one-time ,Erase, customized, Or cyclic codes, and we can also send the code to others by wechat, SMS,Email, Messenger,or Whatsapp



- Generate Passcode

We can generate varies types of codes, such as permanent, timed, one-time ,Erase, customized, Or cyclic codes, and we can also send the code to others by wechat, SMS,Email, Messenger,or Whatsapp

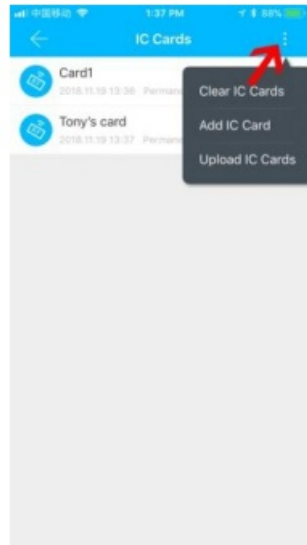


- Manage Passcodes

All code information is shown on this page, We can reset it, generate passcodes, or upload Passcodes on this

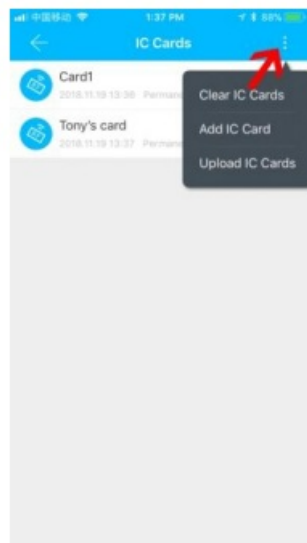


page(such as we program a Code on keypad, then upload it to app, check5.2 for details The upload function is only effective when the Lock already connect with the app, and codes generated on keypad is later than the connection)



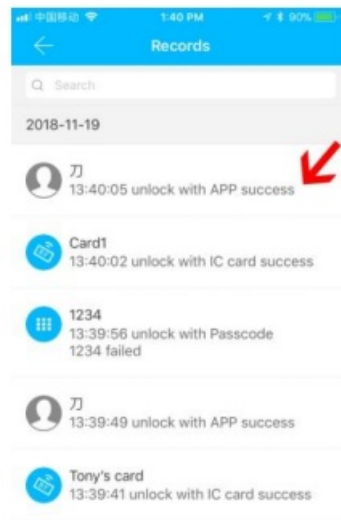
- Manage IC Cards

All card information is shown on this page, We can clear card, add card, or upload Card information on this page(such as we program a Card on keypad, then upload it to app, check 5.3 for details The upload function is only effective when the Lock already connect with the app, and codes generated on keypad is later than the connection)



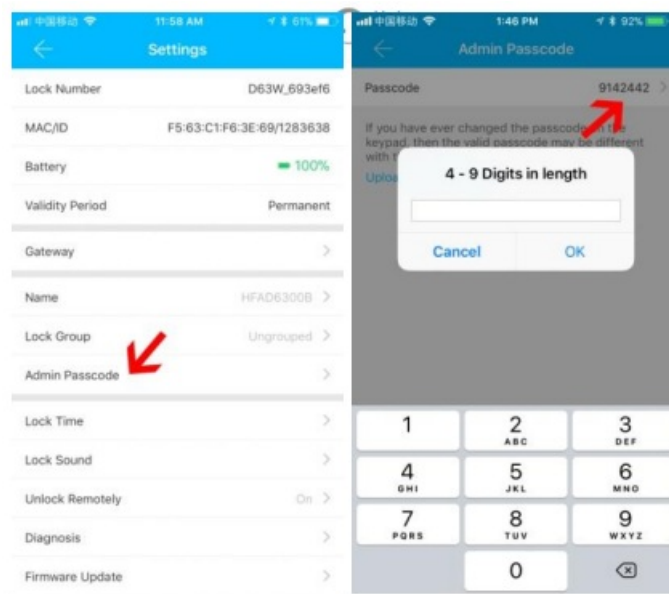
- Records

All the unlock information are recorded on this page



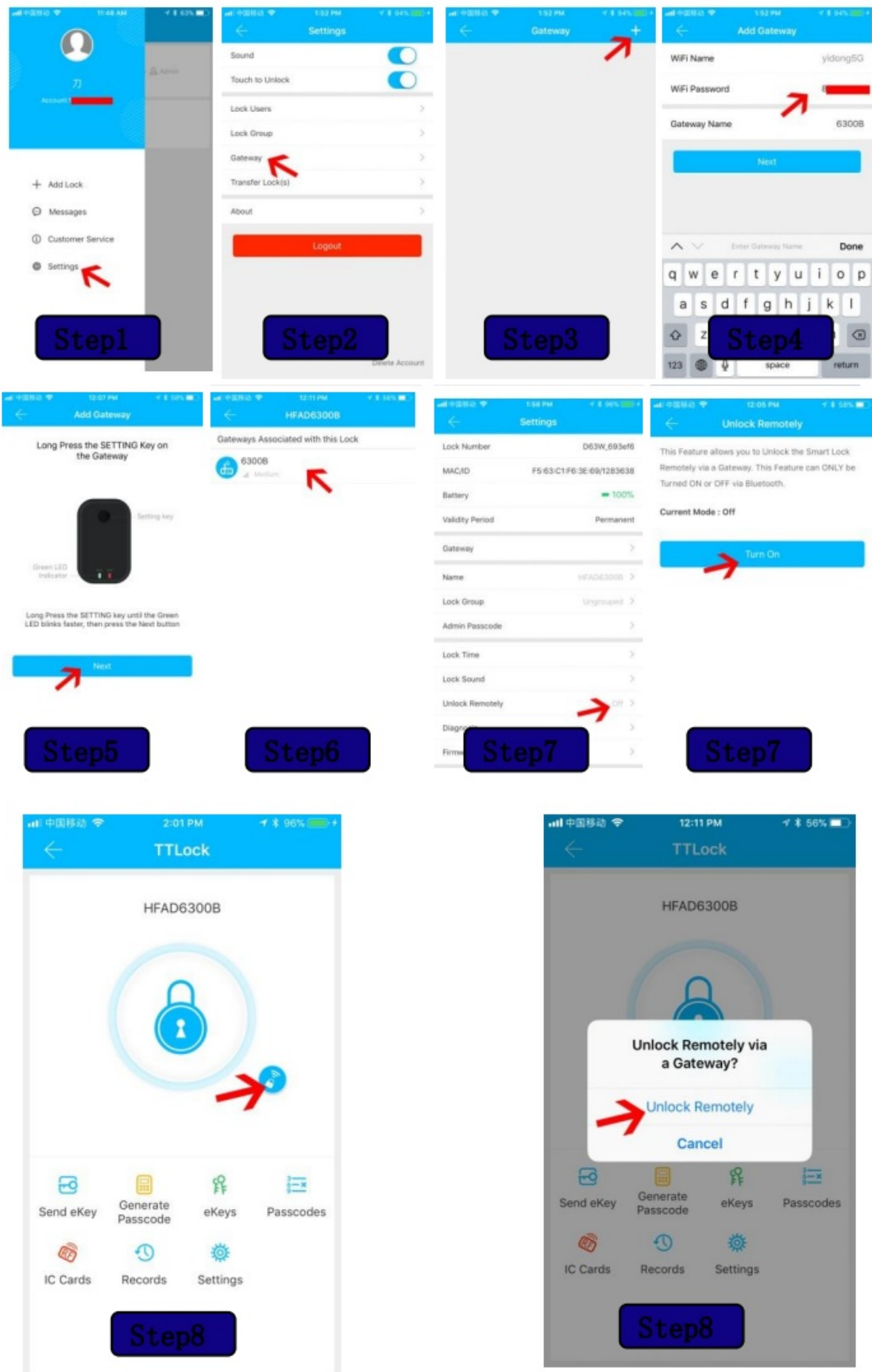
- setting

Most system setting can be seen here, we can change admin passcode on this page



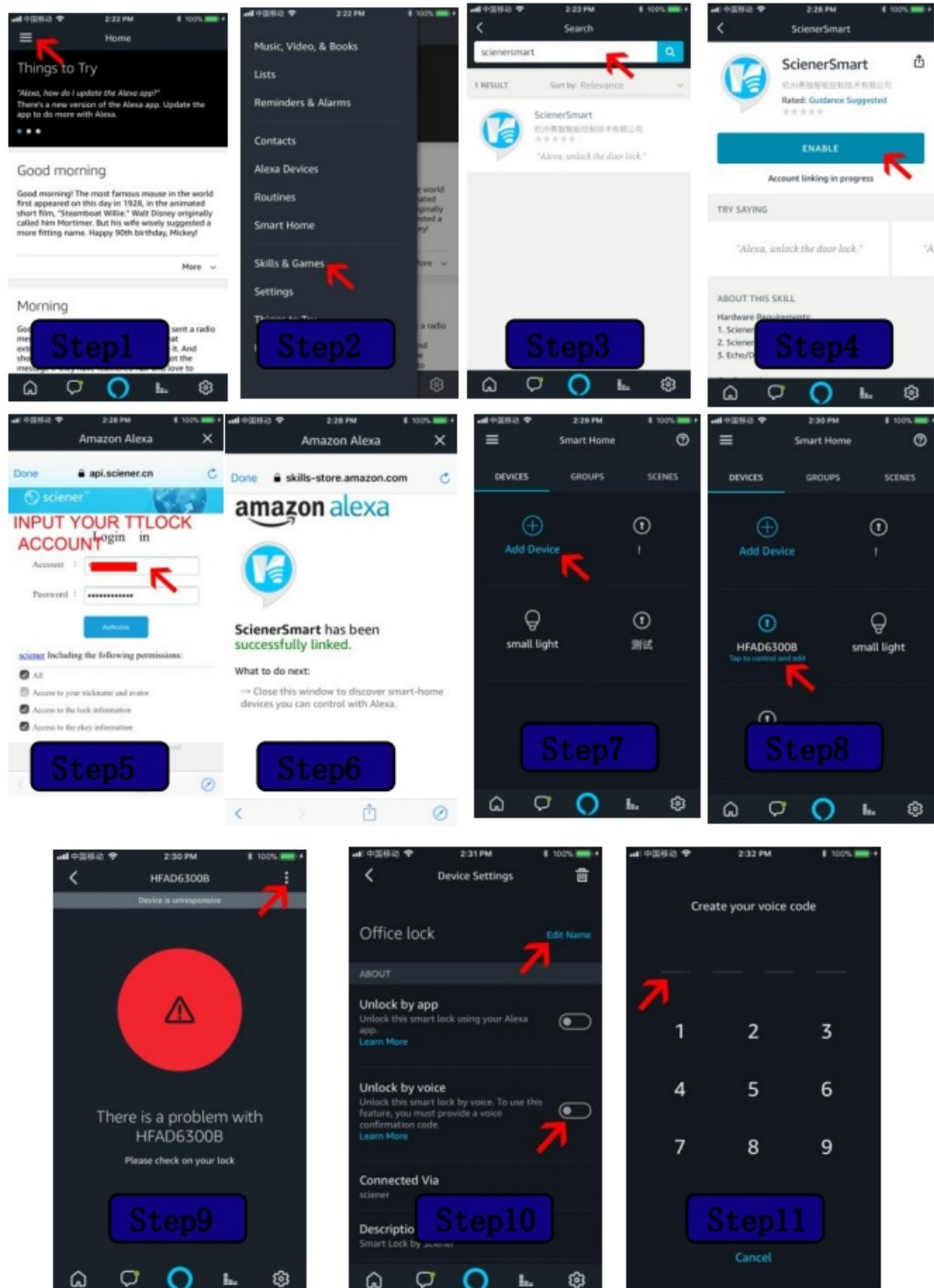
- Install Gateway for remote control (An extra gateway is required for this step, after installation, the lock can be operated in a long distance where Wifi or 4G is available, and it will be able to work with alexa, check 4.4)  
Follow these photos to add a gateway for the lock

- Step 1: login TTLOCK app, click the left up corner button to show the page, click setting
- Step2: click on gateway
- Step3: click on the “+” Button
- Step4: connect to wifi, make sure gateway is nearby, input the wifi code, and give the gateway a name
- Step5: Long press the button on gateway until the green light flash quickly, click on next
- Step6: Gateway added successful
- Step7: Enable remote unlock function
- Step8: Turn off bluetooth, click on the small remote unlock button(the button on the right of the normal unlock button) to check if it works.



- Work with alexa( Must install gate first and enable remote control)Check the following photos to know about the process
  - Step1: login alexa app and click on the left up corner to show the page on step 2
  - Step2: click on Skills & Games
  - Step3: search for “ScienerSmart”
  - Step4: enable it
  - Step5: input your TTLOCK account

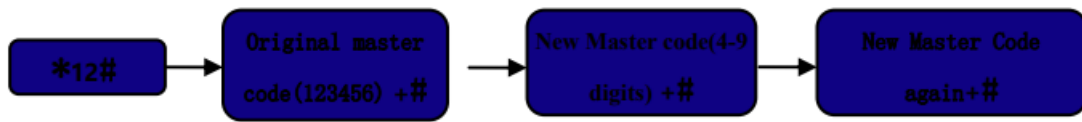
- Step6: successfully linked
- Step7: go to “smart home” page on alexa app”, click on add device
- Step8: Amazon echo will find a new device(HFAD6300B in this case)
- Step9: click the right up corner to show the page on step 10
- Step10: edit a new name for the lock such as “office lock”, click on unlock by voice
- Step11: input a voice code for alexa such as 1234, input it again (keep the lock close to echo)
- Step12: speak to alexa such as “alexa, unlock office lock”, alexa will answer “what’s your voice code for office lock”, “answer the voice code we just set(1234)”, door lock will open



## Operation On Keypad

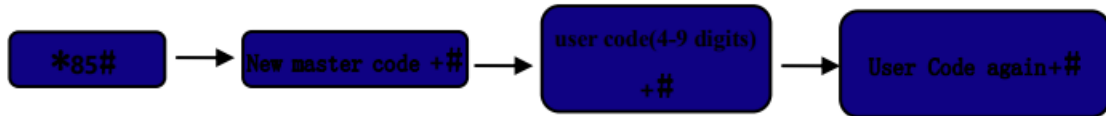
- change admin code user via keypad

Input \*12#→ original master code(123456) #→new master code(4-9 digits) #→new master code again#



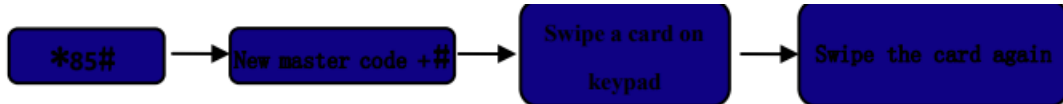
- add users codes via keypad

Input \*85#→new master code#→user code(4-9 digits)#→user code(4-9 digits)#



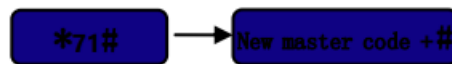
- add card user via keypad

Input \*85#→new master code#→swipe a card on keypad→swipe the card again



- add card user via keypad

Input \*85#→new master code#→swipe a card on keypad→swipe the card again

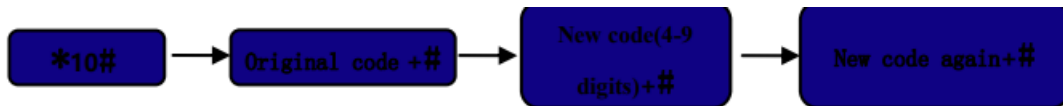


- delete all card users via keypad



- change user code

Input \*10#→original code#→new code(4-9 digits)#→new code again#



- add app user

Input \*83#→new master code#→login in app to add this device(check 4.2.1)



**(Note:** all the codes and cards added before connection with app will be deleted except for admin code, you can add new codes or cards on app now. Or you can still add users via keypad,they are able to uploaded to app now)

## Others

- This lock has anti-peeking function, with which users can input innocent number before or after the password, e.g. XXX+password+XXX. (no more than 16 digits.)
- The keypad will be locked for 5 minutes if you continuously input wrong codes for 5 times.
- Low voltage alarm function There will alarm to remind to change the batteries upon unlock the door when the voltage is below 4.8V.
- The Bluetooth must be turn on when upload the data operated by keypad to app
- Bluetooth effective distance: about 2 meters
- Gate way effective distance: about 16 meters diameter

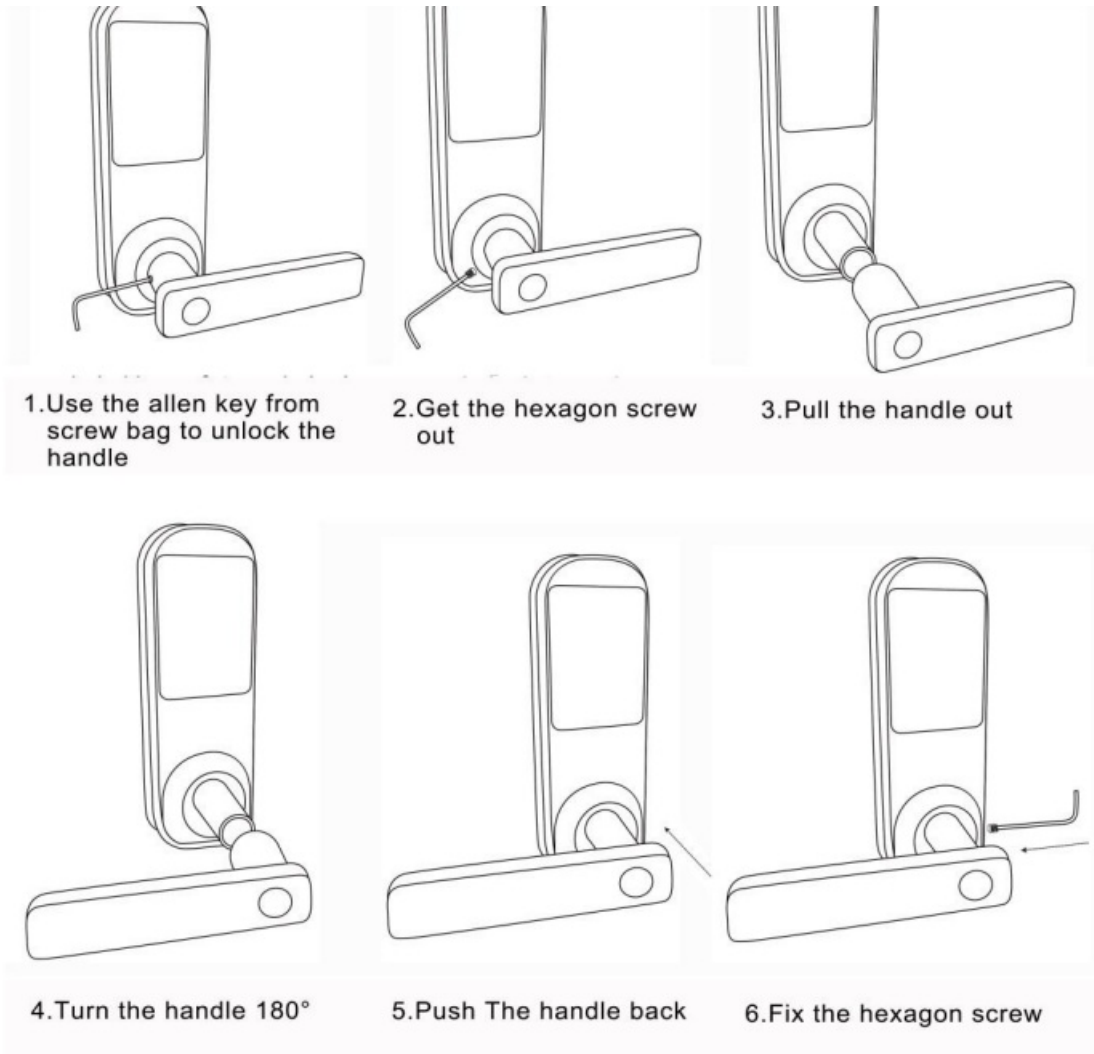
- If you keep stay on the app page, you can touch any key on keypad to unlock it
- You can also add users by press the “add user button”hidden under the back panel, near reset button, press it , input a code to add users

### Video Instruction

	Video content	link
1	Installation and programming of HFAM10B	<a href="https://youtu.be/5_HAO0arUXM">https://youtu.be/5_HAO0arUXM</a>

Problem shooting (Customer Service Email: [xionsihong@hotmail.com](mailto:xionsihong@hotmail.com))  
 If you failed to program this lock or you have any other question, please contact customer service email, we will reply within 24 hours normally.

### HFAM10 Handle Direction Reverse Instructions



### FCC Warning

This device complies with part 15 of the FCC rules. Operation is subject to the following two conditions:

1. this device may not cause harmful interference, and
2. this device must accept any interference received, including interference that may cause undesired operation.

Changes or modifications not expressly approved by the party responsible for compliance could void the user's authority to operate the equipment.


**NOTE:** This equipment has been tested and found to comply with the limits for a Class B digital device, pursuant to part 15 of the FCC Rules. These limits are designed to provide reasonable protection against harmful interference in a residential installation. This equipment generates uses and can radiate radio frequency energy and, if not installed and used in accordance with the instructions, may cause harmful interference to radio communications. However, there is no guarantee that interference will not occur in a particular installation. If this equipment does cause harmful interference to radio or television reception, which can be determined by turning the equipment off and on, the user is encouraged to try to correct the interference by one or more of the following measures:

- Reorient or relocate the receiving antenna.
- Increase the separation between the equipment and receiver.
- Connect the equipment into an outlet on a circuit different from that to which the receiver is connected.
- Consult the dealer or an experienced radio/TV technician for help.

**Radiation Exposure Statement**

This equipment complies with FCC radiation exposure limits set forth for an uncontrolled environment. This equipment should be installed and operated with minimum distance 20cm between the radiator and your body.

**Documents / Resources**

 <p>HAIFUAN HFAM10B-L-NB Bluetooth Door Manual</p>	<p><a href="#">HAIFUAN HFAM10B-L-NB Bluetooth Keyless Code Door Lock</a> [pdf] User Manual HFAM10B-L-NB, HFAM10BLNB, 2A5UF-HFAM10B-L-NB, 2A5UFHFAM10BLNB, HFAM10B-L-NB Bluetooth Keyless Code Door Lock, Bluetooth Keyless Code Door Lock</p>
---	---

**References**

- [🌐 HFAM10B USER MANUAL - YouTube](#)