



Haian Support HA-E26TOUCH Touch Table Lamp User Manual

[Home](#) » [Support](#) » Haian Support HA-E26TOUCH Touch Table Lamp User Manual 

Contents

- 1 Haian Support HA-E26TOUCH Touch Table Lamp
- 2 DESCRIPTION
- 3 SPECIFICATIONS
- 4 WHAT'S IN THE BOX
- 5 PRODUCT DIMENSIONS
- 6 FEATURES
- 7 HOW TO USE
- 8 INSTALLATION
- 9 MAINTENANCE
- 10 IMPORTANT SAFEGUARDS
- 11 TROUBLESHOOTING
- 12 FREQUENTLY ASKED QUESTIONS
- 13 VIDEO – PRODUCT OVERVIEW
- 14 References
- 15 Related Posts



Haian Support HA-E26TOUCH Touch Table Lamp



DESCRIPTION

The Haian Support HA-E26TOUCH Touch Table Lamp combines vintage appeal with modern functionality, offering a compact yet stylish lighting solution for various settings. With its antique finish and steampunk-inspired design, this lamp adds a nostalgic touch to any space. Measuring 3.93 inches in diameter and 8.6 inches in height, it's perfectly sized for bedside tables, desks, or other small surfaces. Featuring touch control technology, this lamp allows effortless adjustment of brightness levels with a simple tap. You can select from three brightness settings – Low, Medium, or High – to customize the lighting to your liking for different activities. Its dimmable feature enables you to create the ideal ambiance for reading, working, or unwinding. Crafted from sturdy iron, this lamp boasts durability and resilience for long-lasting use. It comes with a 63-inch plug-in power cord, ensuring convenient access to power outlets. Additionally, each lamp includes an E26 LED bulb with a warm 2700K color temperature, offering energy-efficient lighting to reduce electricity consumption. Suitable for bedrooms, living rooms, offices, and more, the Haian Support HA-E26TOUCH Touch Table Lamp is a versatile and stylish addition to any home décor.

SPECIFICATIONS

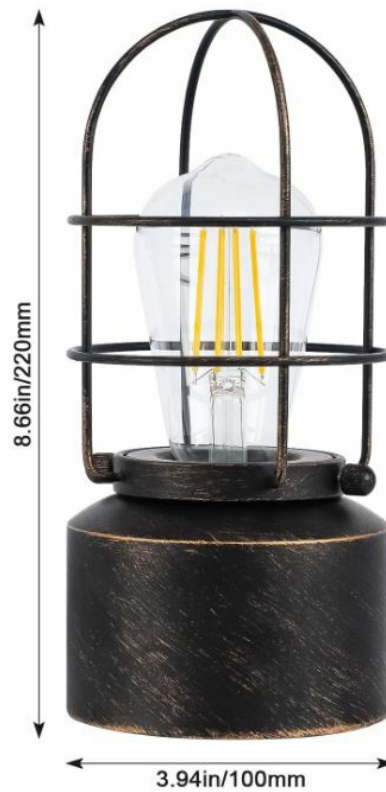
Brand	Haian Support
Product Dimensions	3.93"D x 3.93"W x 8.6"H
Special Feature	Dimmable, 3-way switching
Light Source Type	Incandescent;LED
Finish Type	antique
Material	Iron
Power Source	Corded Electric
Switch Type	Touch
Model Number	HA-E26TOUCH
Connectivity Technology	USB
Lighting Method	Dimmable
Control Method	Touch
Item Weight	1.4 Pounds
Bulb Base	E26
Connectivity Protocol	Homeplug
Voltage	120 Volts
Base Diameter	3.94 Inches
Brightness	750 Lumen
Item Weight	1.4 pounds
Maximum Compatible Wattage	60 Watts

WHAT'S IN THE BOX

- Lamp
- Bulb
- User Manual

PRODUCT DIMENSIONS

- The second image provides the dimensions of the lamp with the lampshade on.
- The height of the lamp is listed as 8.66 inches (or 220 mm), and the diameter of the base is 3.94 inches (or 100 mm).



FEATURES

- **Touch Functionality:** Adjusting the lamp's brightness is made effortless by a simple touch to the vintage-style lamp holder, offering user-friendly operation.
- **Adjustable Illumination:** Experience three brightness levels – Low, Medium, and High – allowing for customizable lighting suitable for various tasks and moods.



- **Vintage Appearance:** Constructed from premium wrought iron with an antique finish, the lamp exudes timeless charm and sophistication, enhancing the decor of any space.
- **Compact Design:** Measuring 3.93 inches in diameter and 8.6 inches in height, the lamp boasts a sleek and

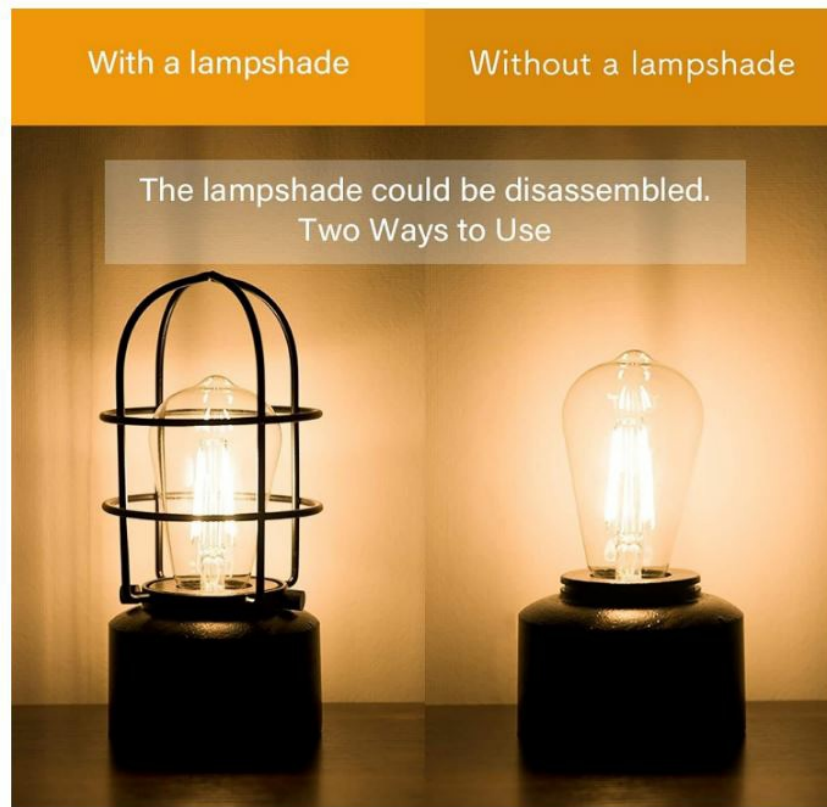
space-saving design without compromising on aesthetic appeal.

- **Robust Construction:** Crafted from durable iron materials, the lamp ensures stability and longevity, promising years of reliable use.
- **Versatile Placement:** Suited for a range of environments including bedrooms, living rooms, and offices, the lamp seamlessly integrates into any setting.
- **Flexible Setup:** Equipped with a 63-inch power cord, the lamp offers flexibility in positioning, allowing for convenient placement near any power outlet.
- **Energy-Efficient Lighting:** Includes an E26 LED bulb with a warm 2700K color temperature, delivering gentle and energy-saving illumination.
- **Water-Resistant Finish:** The lamp's antique coating not only adds visual appeal but also provides protection against water damage, making it suitable for use in damp areas.
- **Timer Feature:** Set the lamp to operate on a timer, cycling between 6 hours on and 18 hours off, for added convenience and energy efficiency.
- **Variety of Finishes:** Available in multiple attractive colors, the lamp complements a wide range of decor styles and color schemes.
- **Easy Installation:** Simple assembly process ensures quick setup, allowing users to enjoy the lamp's benefits with minimal effort.
- **Safety Measures:** Designed with user safety in mind, the lamp features a touch-sensitive switch and durable construction to prevent accidents and damage.
- **Enhanced Brightness:** Emitting up to 750 lumens of light, the lamp provides ample illumination for reading, working, or relaxing.
- **Warranty Assurance:** Supported by a manufacturer's warranty, offering customers peace of mind and assurance of product quality and reliability.

HOW TO USE

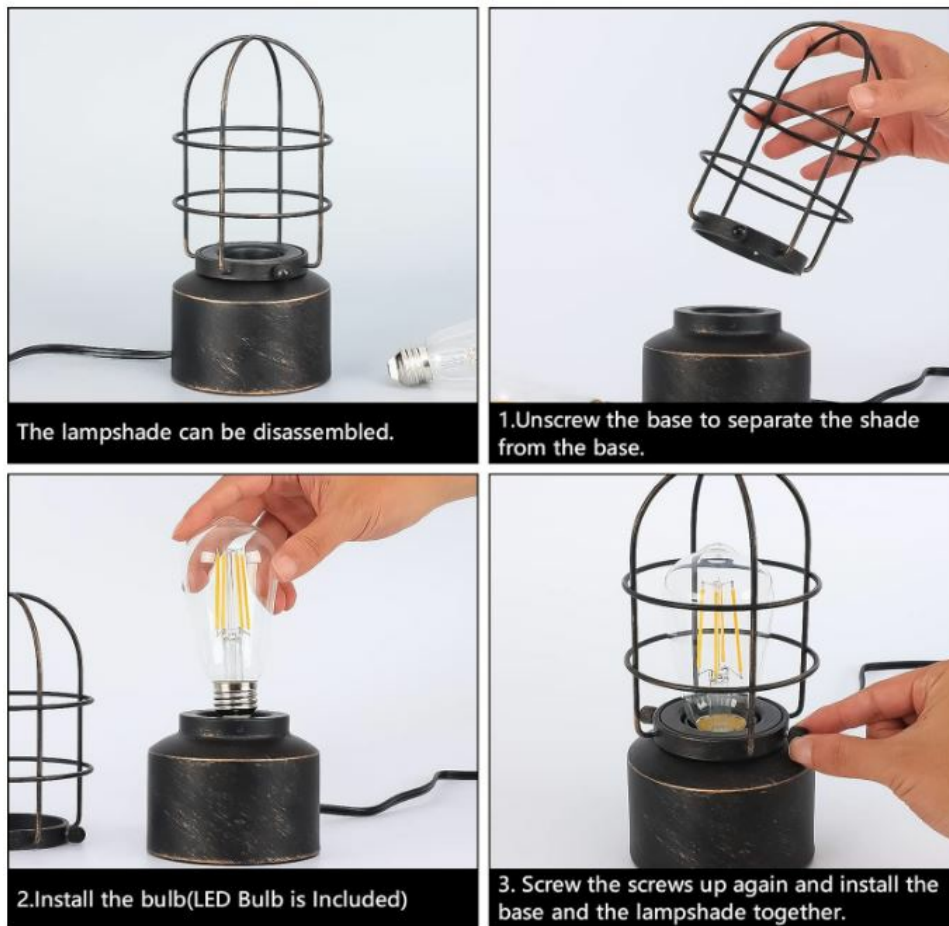
Versatile Design

- The first image shows the lamp in two states: "With a lampshade" and "Without a lampshade."
- It highlights the lamp's versatility, noting that "The lampshade could be disassembled. Two Ways to Use."



- **Connecting Power:** Begin by plugging the lamp's power cord into an appropriate power outlet located conveniently close to where you intend to use the lamp.
- **Activation:** To switch on the lamp, gently touch the antique-style lamp holder. It will activate, resuming at the brightness level previously set.
- **Brightness Adjustment:** Tap the lamp holder repeatedly to toggle through three brightness levels: Low, Medium, and High. Select the brightness level that best suits your needs.
- **Turning Off:** To switch off the lamp, touch the lamp holder once more until the light dims and extinguishes.
- **Placement:** Position the lamp on a stable surface such as a bedside table, desk, or shelf, ensuring it remains clear of water sources and areas prone to moisture.
- **Avoid Overloading:** Do not exceed a 60-watt bulb in the lamp, as this may lead to overheating or damage.
- **Appropriate Bulbs:** Ensure you use an E26 LED bulb with a maximum wattage of 6 watts and a color temperature of 2700K. Avoid using CFL bulbs as they may not be compatible.
- **Careful Screw Handling:** When replacing bulbs, only tighten the screws by hand. Using tools like pliers could harm the screw structure and loosen them.
- **Regular Cleaning:** Dust the lamp periodically with a soft, dry cloth to maintain its appearance and prevent dirt buildup.
- **Handle with Care:** Treat the lamp delicately to prevent damage to its components, especially when adjusting its position or moving it.

INSTALLATION



- The lampshade can be disassembled.
- Unscrew the base to separate the shade from the base.
- Install the bulb(LED Bulb is Included)
- Screw the screws up again and install the base and the lampshade together.

MAINTENANCE

- **Frequent Cleaning:** Regularly wipe down the lamp to remove accumulated dust and debris.
- **Inspect Power Cord:** Check the power cord regularly for any signs of wear or damage, and replace it promptly if necessary.
- **Bulb Check:** Periodically inspect the LED bulb for signs of malfunction or damage, replacing it if flickering or worn.
- **Secure Screws:** Ensure that all screws on the lamp base are tightened securely to maintain stability.
- **Monitor Touch Functionality:** Regularly test the touch controls to ensure they respond effectively and adjust brightness levels smoothly.
- **Prevent Moisture Exposure:** Keep the lamp away from water or moisture sources to prevent electrical damage.
- **Proper Storage:** When not in use, store the lamp in a dry, dust-free environment to prolong its lifespan.
- **Avoid Heat Sources:** Position the lamp away from heaters or radiators to prevent overheating.
- **Prompt Component Replacement:** Replace any damaged or worn components promptly to prevent further issues.
- **Professional Assistance:** Seek professional help if encountering persistent problems or concerns with the lamp's functionality.

IMPORTANT SAFEGUARDS

- **Handle with Care:** Always handle the lamp delicately to prevent any damage to its components and ensure its durability.
- **Avoid Overloading:** Do not overload the lamp's power supply by connecting too many devices or using bulbs that are not compatible, as this could lead to overheating or electrical hazards.
- **Unplug When Idle:** To minimize the risk of electrical hazards, disconnect the lamp from the power source when not in use or during maintenance tasks.
- **Keep Away from Moisture:** Place the lamp in areas where it won't be exposed to water or other liquids to prevent damage and ensure safe operation.
- **Use Appropriate Bulbs:** Only use bulbs that are compatible with the lamp's wattage and base type to avoid damage and potential safety issues.
- **Avoid Strong Interference:** Keep the lamp away from sources of strong electromagnetic interference, such as other electronic devices, to maintain its functionality.
- **Regular Check-ups:** Periodically inspect the lamp for signs of wear, damage, or malfunctions, and address any issues promptly to prevent accidents.
- **Secure Placement:** Ensure the lamp is placed on a stable and level surface to prevent tipping and potential damage to the lamp or surrounding objects.
- **Keep Out of Reach:** Place the lamp where children and pets cannot reach it to prevent accidents or damage.
- **Temperature Considerations:** Protect the lamp from extreme temperatures and direct sunlight to maintain its performance and longevity.
- **Proper Ventilation:** Ensure adequate airflow around the lamp to prevent overheating and maintain proper functioning.
- **Regular Cleaning:** Keep the lamp clean by wiping it with a soft, dry cloth to maintain its appearance and functionality.
- **Avoid Excessive Force:** Refrain from applying excessive force to the lamp's components to prevent damage or malfunction.
- **Follow Instructions:** Adhere to the manufacturer's instructions for installation, operation, and maintenance to ensure proper use of the lamp.
- **Seek Professional Assistance:** If encountering technical issues, seek help from qualified professionals to troubleshoot and repair the lamp safely.

TROUBLESHOOTING

- **Failure to Power On:** Check the power cord connection and outlet functionality to ensure power supply.
- **Dim or Flickering Light:** Verify that the bulb is securely seated and replace it if flickering or damaged.
- **Inconsistent Touch Control:** Clean the lamp's surface and touch-sensitive area to remove any dirt or residue.
- **Base Stability Issues:** Tighten the base screws to enhance stability and prevent wobbling.
- **Power Cord Damage:** Replace any damaged power cords to maintain electrical safety.
- **Intermittent Connectivity:** Ensure secure USB connections between the lamp and power source.
- **Overheating Concerns:** Allow the lamp to cool down if it becomes excessively hot during use.
- **Uneven Lighting:** Adjust the lamp's position for more uniform light distribution.
- **Bulb Compatibility Verification:** Confirm that the LED bulb used matches the lamp's specifications.
- **Manufacturer Contact:** Contact the manufacturer for further assistance if troubleshooting efforts are

unsuccessful.

FREQUENTLY ASKED QUESTIONS

What is the brand of the touch table lamp?

The brand of the touch table lamp is Haian Support.

What are the product dimensions of the Haian Support HA-E26TOUCH Touch Table Lamp?

The product dimensions of the Haian Support HA-E26TOUCH Touch Table Lamp are 3.93 inches in diameter, 3.93 inches in width, and 8.6 inches in height.

What are the special features of the Haian Support HA-E26TOUCH Touch Table Lamp?

The special features of the Haian Support HA-E26TOUCH Touch Table Lamp include dimmable functionality and 3-way switching.

What types of light sources are compatible with the Haian Support HA-E26TOUCH Touch Table Lamp?

The Haian Support HA-E26TOUCH Touch Table Lamp is compatible with incandescent and LED light sources.

What is the finish type of the Haian Support HA-E26TOUCH Touch Table Lamp?

The finish type of the Haian Support HA-E26TOUCH Touch Table Lamp is antique.

What is the material used for constructing the Haian Support HA-E26TOUCH Touch Table Lamp?

The Haian Support HA-E26TOUCH Touch Table Lamp is made of iron.

What is the power source for the Haian Support HA-E26TOUCH Touch Table Lamp?

The power source for the Haian Support HA-E26TOUCH Touch Table Lamp is corded electric.

What type of switch does the Haian Support HA-E26TOUCH Touch Table Lamp have?

The Haian Support HA-E26TOUCH Touch Table Lamp has a touch switch.

How many light sources does the Haian Support HA-E26TOUCH Touch Table Lamp have?

The Haian Support HA-E26TOUCH Touch Table Lamp has one light source.

What connectivity technology does the Haian Support HA-E26TOUCH Touch Table Lamp feature?

The Haian Support HA-E26TOUCH Touch Table Lamp features USB connectivity technology.

What is the brightness level of the Haian Support HA-E26TOUCH Touch Table Lamp?

The brightness level of the Haian Support HA-E26TOUCH Touch Table Lamp is 750 lumens.

What is the bulb base type used in the Haian Support HA-E26TOUCH Touch Table Lamp?

The bulb base type used in the Haian Support HA-E26TOUCH Touch Table Lamp is E26.

What color temperature does the included LED bulb have?

The included LED bulb has a color temperature of 2700K.

What is the wattage of the included LED bulb?

The included LED bulb has a wattage of 6 watts.

How is the Haian Support HA-E26TOUCH Touch Table Lamp described in terms of its design?

The Haian Support HA-E26TOUCH Touch Table Lamp is described as having a classic design with a steampunk feel, made from sturdy and high-quality iron.

VIDEO – PRODUCT OVERVIEW



<https://manuals.plus/wp-content/uploads/2024/02/Haian-Support-HA-E26TOUCH-Touch-Table-Lamp-User-Manual.mp4>

References

- [User Manual](#)

[Manuals+](#), [Privacy Policy](#)

This website is an independent publication and is neither affiliated with nor endorsed by any of the trademark owners. The "Bluetooth®" word mark and logos are registered trademarks owned by Bluetooth SIG, Inc. The "Wi-Fi®" word mark and logos are registered trademarks owned by the Wi-Fi Alliance. Any use of these marks on this website does not imply any affiliation with or endorsement.