



# hager JK240PM Invicta3 Multi Function Pulsed Instructions

[Home](#) » [hager](#) » hager JK240PM Invicta3 Multi Function Pulsed Instructions 

## Contents

- [1 hager JK240PM Invicta3 Multi Function Pulsed](#)
- [2 Product Information](#)
- [3 Product Usage Instructions](#)
- [4 TOOLS](#)
- [5 Meter Kit Instructions](#)
- [6 Documents / Resources](#)
  - [6.1 References](#)



**hager JK240PM Invicta3 Multi Function Pulsed**



## Product Information

Product Name: Meter Kit

Model: JK240PM – JK240MID

Manufacturer: Hager

Contact Information:

- Technical Service Centre: 01952 675 689
- Technical Fax: 01952 675 557
- Sales Service Centre: 01952 675612
- Website: [www.hager.co.uk](http://www.hager.co.uk)
- Email: [technical@hager.co.uk](mailto:technical@hager.co.uk)
- Twitter: [@hageruk](https://twitter.com/hageruk)

## Product Usage Instructions

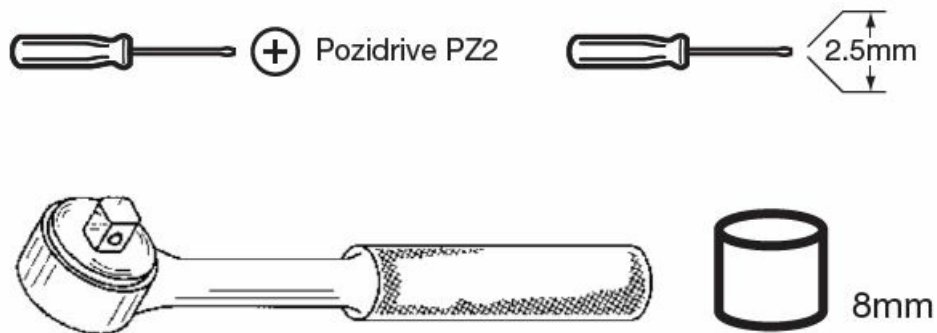
1. Ensure that the incomer (not included) is fitted according to the incomer instructions.
2. Locate the bottom right corner of the 250A TPN board and position the meter installation there.
3. If there is an aperture in the bottom right corner, use the provided din rail to mount the meter underneath the incomer molding. Cut out where applicable.

4. Follow the phase connections below:
  - L1 – Connect the phase cable to the respective position using the carp nut provided. Torque to 5Nm.
  - L2 – Connect the phase cable to the respective position using the carp nut provided. Torque to 5Nm.
  - L3 – Connect the phase cable to the respective position using the carp nut provided. Torque to 5Nm.
  - Neutral – Connect the neutral cable to the respective position using the carp nut provided. Torque to 5Nm.
5. Install the meter bracket in the bottom right corner using the two hex head high torque screws provided.
6. Attach the four feet to the current transformer (CT), ensuring the direction of the CT matches the arrow on the side. Secure with the four hex head high torque screws.
7. Clip the meter and fuses (L3/L2/L1/N) to the bracket.
8. If using the MID version, plug in the RJ45 cables to the meter and CT.
9. If using the MID version, use a wire seal to seal up the connection on the CT using the plastic clip provided.
10. If using the MID version, seal the clear shroud to the meter housing to prevent removal of the RJ45 cables.

**Note:** For any technical assistance or further information, please refer to the contact details provided above.

## TOOLS

- JK240PM – JK240MID

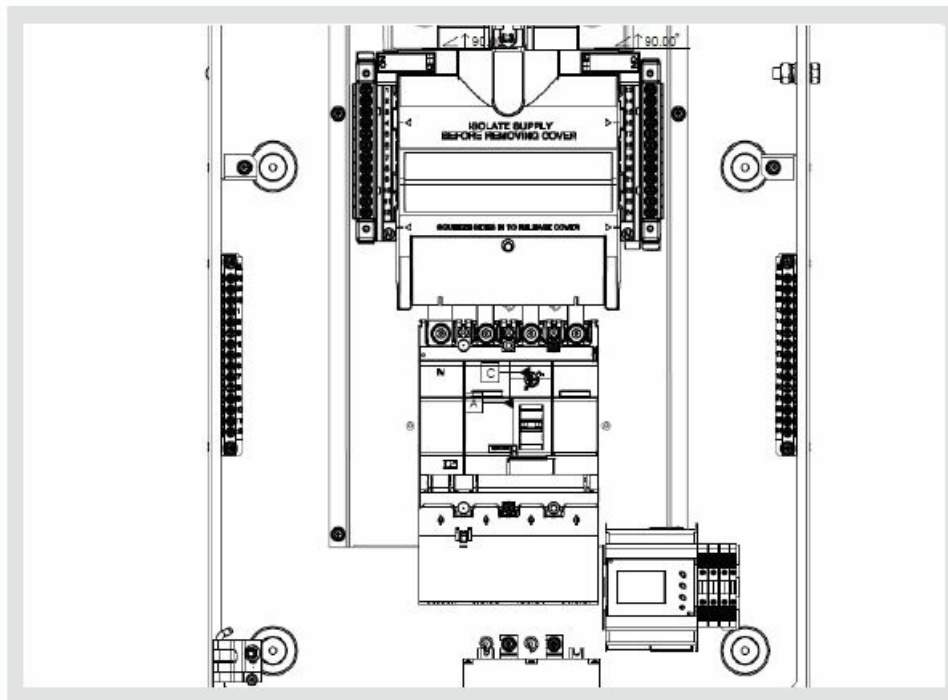


## Meter Kit Instructions

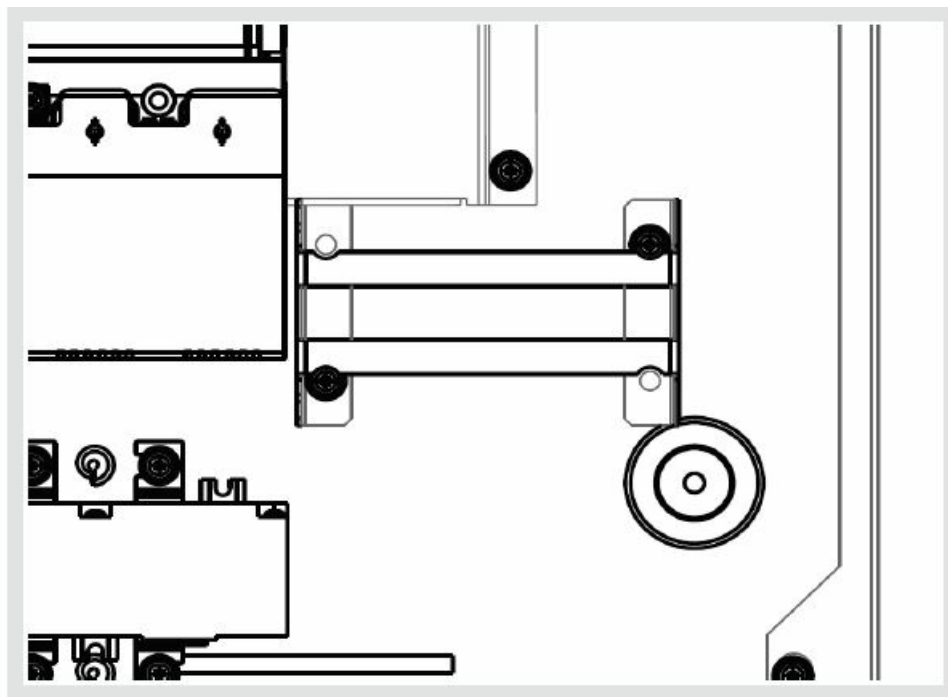
### Instruction leaflet for fitting 250A Meter Pack

Meter to be fitted when fitting incomer (see incomer instructions). Incomer shown in place for illustration purposes.

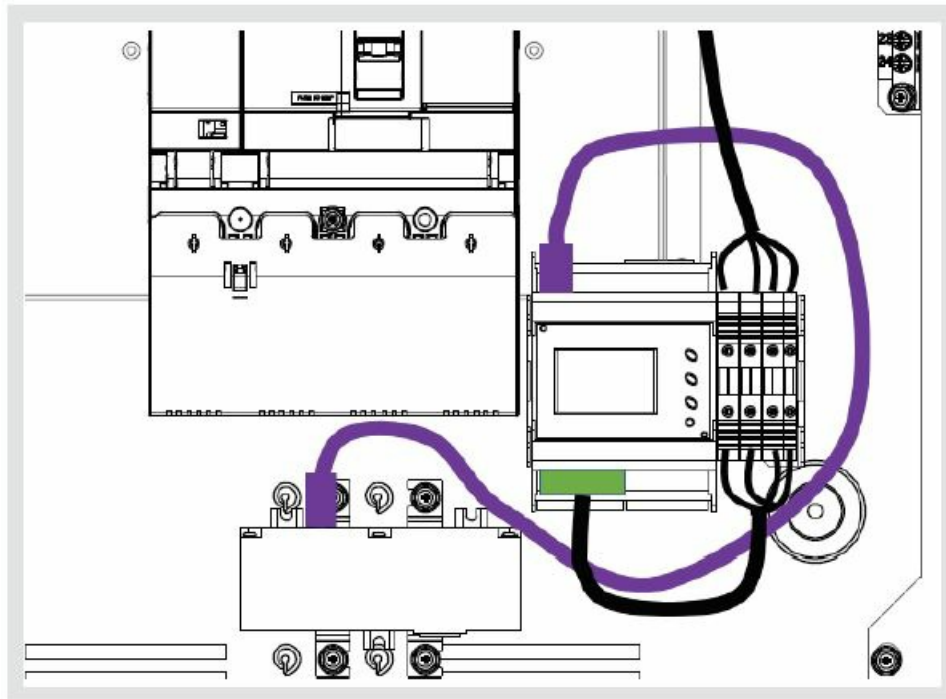
- Meter installation position bottom right of the 250A TPN board, if to aperture in the bottom right hand corner please use the din rail provided to mount underneath the incomer molding and cut out where applicable and follow the phase connections below – CT fixings remain the same.



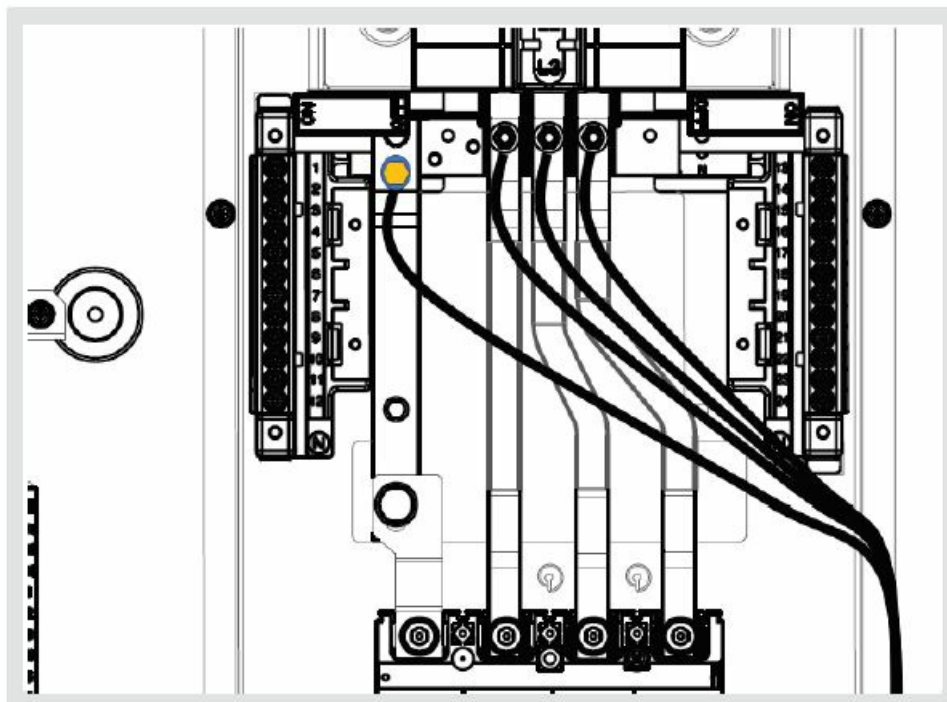
- Install Meter bracket in the bottom right hand corner using the 2 off hex head high torque screws provided. Fit the feet to the Current transformer x 4 whilst taking care of the direction of the CT, there is an arrow on the side to show the direction and secure with the 4 off hex head high torque screws.



- Fit the meter and fuses L3/L2/L1/N as shown above by clipping to the bracket. Plug in the RJ45 cables to the Meter and CT if using the MID version you may now use a wire seal to seal up the connection on the CT using the plastic clip provided and seal the clear shroud to the meter housing preventing the removal of the RJ45 Cables.



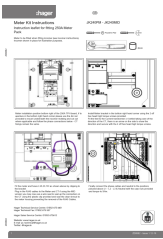
- Finally connect the phase cables and neutral to the positions pictured above L1 – L2 – L3 & Neutral with the carp nuts provided and torque to 5Nm.



**Hager Technical Service Centre: 01952 675 689**

- Hager Technical Fax: 01952 675 557
- Hager Sales Service Centre: 01952 675612
- Website: [www.hager.co.uk](http://www.hager.co.uk).
- E-mail us: [technical@hager.co.uk](mailto:technical@hager.co.uk).
- Twitter: @hageruk.

**Documents / Resources**

	<p><a href="#">hager JK240PM Invicta3 Multi Function Pulsed</a> [pdf] Instructions  JK240PM Invicta3 Multi Function Pulsed, JK240PM, Invicta3 Multi Function Pulsed, Multi Functi  on Pulsed, Function Pulsed, Pulsed</p>
--	---

References

- [:h Hager Electrical Distribution, Lighting & Wiring Accessories](#)