

**hager**  
ADC906R Residual Current Operated Circuit  
Breaker



# hager ADC906R Residual Current Operated Circuit Breaker Instruction Manual

[Home](#) » [hager](#) » hager ADC906R Residual Current Operated Circuit Breaker Instruction Manual 

## Contents

- [1 Hager ADC906R Residual Current Operated Circuit Breaker](#)
- [2 Product Specifications](#)
- [3 Product Usage Instructions](#)
- [4 Electrical connection](#)
- [5 Information](#)
- [6 FAQs](#)
- [7 Documents / Resources](#)
  - [7.1 References](#)

**hager**

**Hager ADC906R Residual Current Operated Circuit Breaker**



## Product Specifications

- Model: Residual current operated circuit-breaker RCBO with switched neutral
- Current Range: 6 to 32 A
- Electrical Connection: Top or bottom supply without alteration of functions
- Mounting: DIN rail mount & Invicta panel board (excluding UK market)

## Product Usage Instructions

### • Installation:

This device should only be installed by a professional electrician according to local installation standards. Do not plug in or unplug the product when it is live.

### • Mounting:

The device can be mounted either from the top or bottom using the plastic DIN rail clip for easy dismounting.

### • Locking Device:

Use the locking device for the handle MZN175 to secure the device in place.

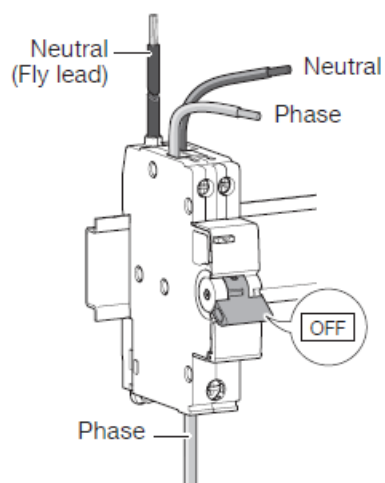
### • Testing:

Perform insulation resistance tests on the top terminals with the device in the OFF position without disconnecting the RCBO.

## Residual current operated circuit-breaker RCBO with switched neutral 6 to 32 A

This device is to be installed only by a professional electrician or fitter according to local applicable installation standards. Do not plug in or unplug this product when it is live.

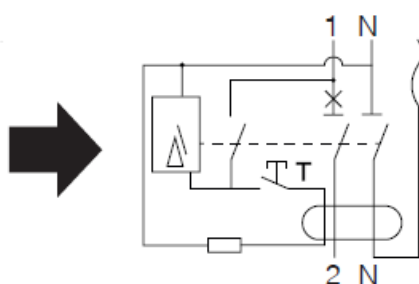
## Electrical connection



This device can be supplied either from the top or bottom without any alteration of its functions (bi-directional device).

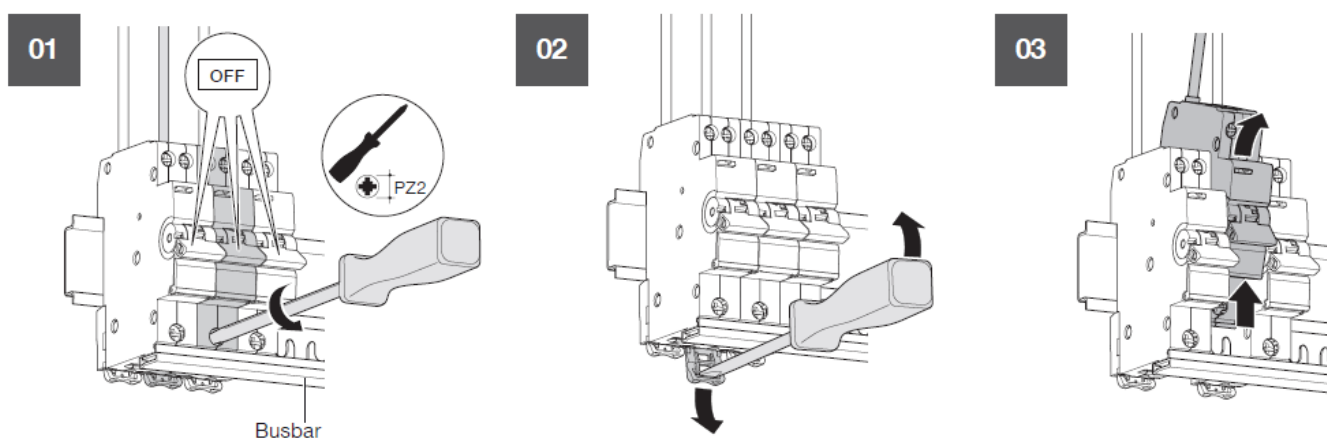
**230/240 V-50Hz**

**230/240V~ 50Hz**

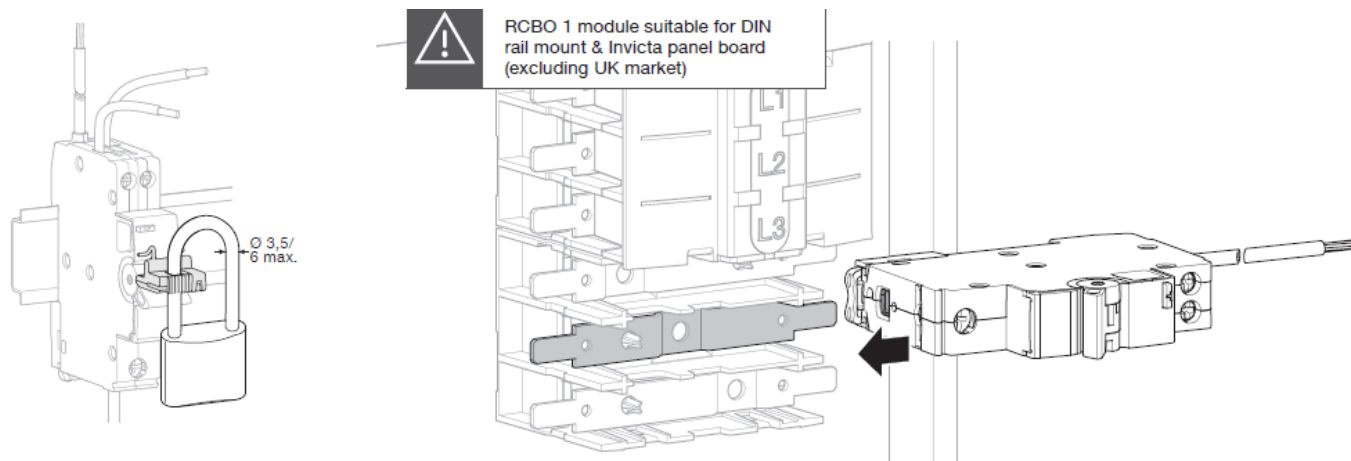


	BOTTOM	TOP
(mm <sup>2</sup> )	1 to 16 2 x 10	1 to 16 2 x 6
	12 mm	10 mm
	⊕ PZ2	⊕ PZ2
	2,1 Nm	1,9 Nm

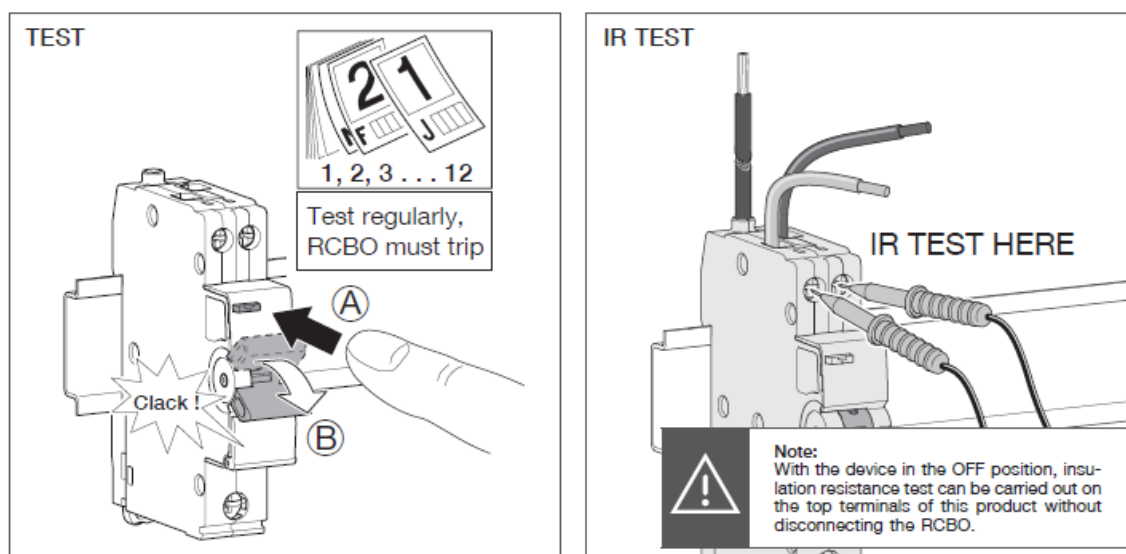
**Easy dismounting with the plastic DIN rail clip**



**Locking device for handle MZN175**



RCBO 1 module suitable for DIN rail mount & Invicta panel board (excluding the UK market)



#### Note:

With the device in the OFF position, an insulation resistance test can be carried out on the top terminals of this product without disconnecting the RCBO.

## Information

### EVCS Guidance Notes

- ADC932R 32 A RCBO
- Where an ADC932R RCBO is used to supply a 7.5 kWh car charger 10 mm<sup>2</sup> cable must be used from the RCBO to the installed vehicle charge point.
- Can only be used in a 6-way or larger enclosure for this application.

### Guidance Notes for All 100 A Dual RCCB Flush Consumer Units

ADC932R 32 A RCBO is not verified in any Flush 100 A Dual RCCB consumer units for the continuous loading of a 7.5 kWh car charger and MUST not be used.

- T +33 (0)3 88 49 50 50 [info@hager.com](mailto:info@hager.com)
- [hager.com](http://hager.com) – 2023.11.27
- Hager Electro S.A.S., Boulevard d'Europe, B.P. 3, 67215 OBERNAI CEDEX, France – [www.hager.com](http://www.hager.com)

## FAQS

- **Q: Can this device be used to supply power to a car charger?**

A: Yes, when used to supply a 7.5 kWh car charger, a 10 mm<sup>2</sup> cable must be used from the RCBO to the charge point. Ensure it is installed in a 6-way or larger enclosure for this application.

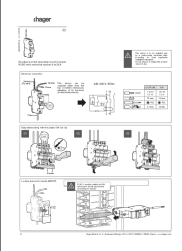
- **Q: Can the RCBO be used in a Flush 100 A Dual RCCB consumer unit for a car charger?**

A: No, the ADC932R 32 A RCBO is not verified for continuous loading of a 7.5 kWh car charger in Flush 100 A Dual RCCB consumer units and must not be used for this purpose.


- **Q: How can I contact support for this product?**

A: Contact Hager Electro S.A.S. at +33 (0)3 88 49 50 50 or email [info@hager.com](mailto:info@hager.com) for assistance.

## Documents / Resources

	<p><a href="#">hager ADC906R Residual Current Operated Circuit Breaker</a> [pdf] Instruction Manual ADC906R Residual Current Operated Circuit Breaker, ADC906R, Residual Current Operated Circuit Breaker, Current Operated Circuit Breaker, Operated Circuit Breaker, Circuit Breaker</p>
---	--

## References

-  [Hager worldwide](#)
- [User Manual](#)

### [Manuals+](#), [Privacy Policy](#)

This website is an independent publication and is neither affiliated with nor endorsed by any of the trademark owners. The "Bluetooth®" word mark and logos are registered trademarks owned by Bluetooth SIG, Inc. The "Wi-Fi®" word mark and logos are registered trademarks owned by the Wi-Fi Alliance. Any use of these marks on this website does not imply any affiliation with or endorsement.