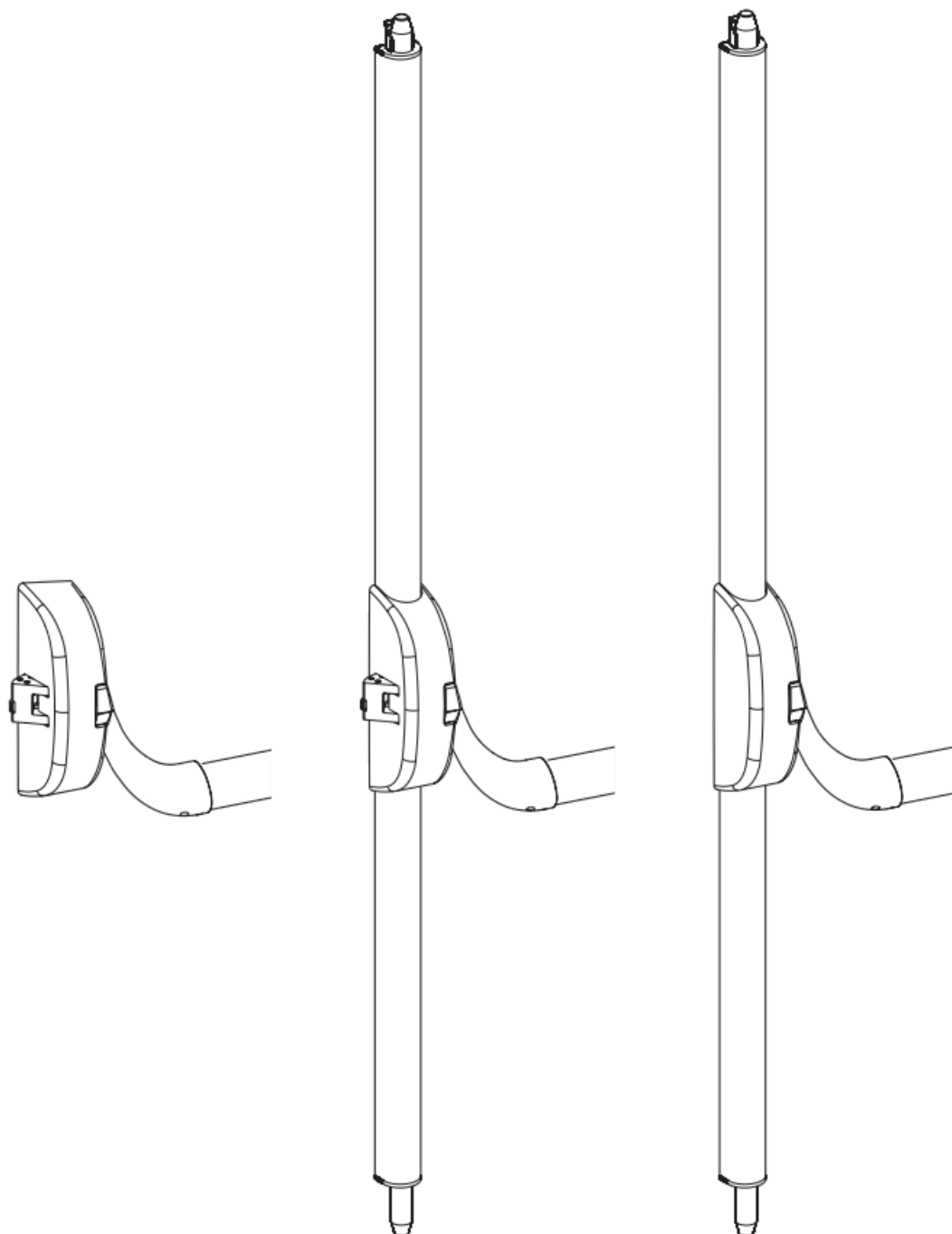


HAFELE 901.02.449 Panic Exit Device Instruction Manual

[Home](#) » [HAFELE](#) » HAFELE 901.02.449 Panic Exit Device Instruction Manual 

HAFELE 901.02.449 Panic Exit Device



Hand out installation and maintenance instructions to the user!

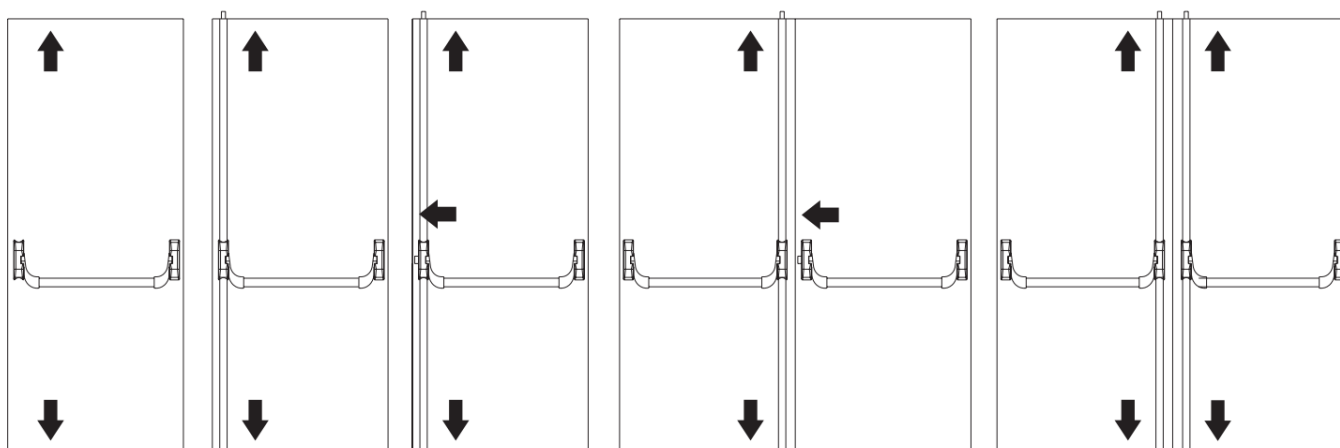
IMPORTANT

This product meets the requirements of EN 1125:2008. Modifications on the product are not permitted.

Contents

- 1 Certified configurations
- 2 Area of application
- 3 Suitability of the products for use on fire resistant/smoke control doors
- 4 Installation instructions
- 5 Exploded view
- 6 Positioning the touchbar on the door leaf
- 7 Shortening the bar, connecting bar and cover
- 8 Installation steps
- 9 Installation phases
- 10 Installation instructions for adjustable striking plates
- 11 Selecting the opening direction
- 12 Visible latch retainer device
- 13 Customers Support
- 14 Documents / Resources
 - 14.1 References
- 15 Related Posts

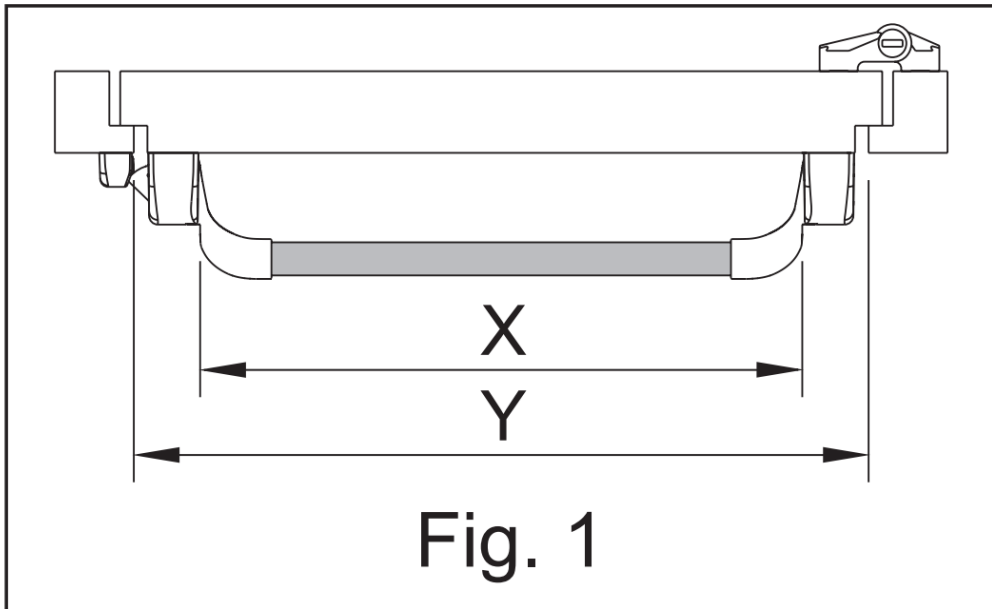
Certified configurations



Area of application

The area of application of the panic lock is as follows:

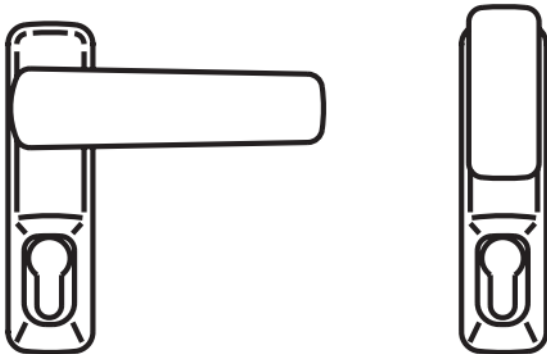
Door weight	Max. door height	Max. door width	Temperature range
≥200 Kg	2520 mm	1320 mm	-10°C +60°C



The length of touch bar X must be adjusted to door width Y.

Length X may never be less than 60% of door width Y (see fig. 1).

The door and frame must be manufactured of a sufficiently rigid material, in order to limit any potential bending to max. 5 mm in any position during the operation. The panic exit device on the door must be mounted on material that guarantees a tensile strength of > 1.5 KN per screw.



Never assemble external fittings on the inside of the door.


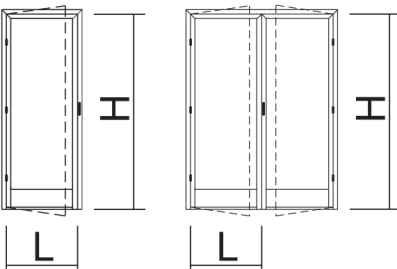
Use the external fitting only on the outside of the door.

For mounting the fittings refer to "Installation instructions for the lever handle for PED 200 / PED 210".

Suitability of the products for use on fire resistant/smoke control doors

The products are suitable for use on fire resistant/smoke control doors.



			Häfele SE & Co KG Adolf-Häfele-Str. 1 D-72202 Nagold							
0497/CPR/6437										
EN 1125:2008	3	7	7	B	1	4	2	2	A	A
 <p>Hmax=3400mm H Lmax=1500mm</p>										

The suitability of these products for use on fire resistant/smoke control doors was certified based on a test according to standard EN 1634-1.

These products fulfill standard EN 1125:2008 and were certified under the building product guideline 89/106/EWG by Warrington Certification Limited (EC Notified Body number 1121)

Installation instructions

NOTE:

The devices for panic exit devices manufactured according to the European Standard guarantee a high level of safety to persons and sufficient safety for property values, provided they are fitted on doors and frames in good condition

1. Prior to installing a lock on a door, the door must be inspected for its perfect function and easy movement. Do not install the lock on honeycomb core doors unless the fitting has been specifically developed for these doors by the manufacturer. Verify that the door is suitable for the installation of this lock. The axis distance of the hinges and the overlap of the door leaf's must allow to simultaneously open the door leaf's (see item 3). The play between the door leaf's may not deviate from the door manufacturer's specifications. Movable parts may not interfere with each other, etc.
2. Prior to assembling a panic exit device on fire resistant/smoke control doors, the certification of the fire resistance of the door must be examined, on which the panic exit device was assembled for the test, in order to determine the suitability on a fire resistant door.
3. Verify that the seals assembled on the door do not affect the proper function of the panic exit device.
4. In case of double doors with a centre mounting and the assembly of panic exit devices on both leaf's, check that each leaf opens, when the respective device is operated. For this purpose, a touch bar to move the active wing can be supplied.
5. If a panic exit device is intended for the assembly on a glass door, the glass must be tempered or coated (laminated glass).
6. When assembling panic exit devices on frameless glass, metal or wooden doors, other fastening systems may

be required.

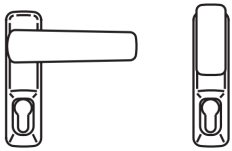
7. The panic exit devices are not intended for double action doors, unless explicitly specified by the manufacturer.
8. The fastening instructions must be precisely following during the assembly. The installer hands these instructions and all maintenance instructions over to the user.
9. The horizontal touch bar of the panic exit device should normally be mounted at a height between 900 mm and 1100 mm above the surface of the finished floor when the doors are closed. If it is known that the majority of users of the premises are small children, a reduction of the mounting height should be considered.
10. The horizontal touch bar must be mounted so that a maximum useful width is reached, at least 60% of the width of the door.
11. The locking components and the striking plates must be attached so that they close securely together. Care must be taken to verify that the locking components in the open state do not overlap or restrict the free run of the door.
12. If the panic exit devices must be fitted on double doors with rebated centre stops and door locks, a door co-or-dimeter according to EN 1158 should be installed to ensure the correct door closing sequence. This is especially important in fire resistant/smoke control doors.
13. For holding the door in the closed position, it is sufficient to use the devices listed in the European standard EN 1125:2008. However, this does not prohibit the installation of door closers.
14. If a door closer is installed, it should be noted that the operation of the door should not be made difficult for children, the elderly or disabled.
15. All enclosed striking plates or spacer plates must be assembled according to European standard EN 1125:2008.
16. On the inside of the door, a label with the lettering "Press here to open" or an icon should be attached directly above the panic exit device or on the touch bar (if the touch bar has a sufficiently large surface). The area for the icon must be at least 8000 mm² and the icon must be white on a green background. It must be designed so that the arrow points to the touch bar, if assembled.
17. The contact surfaces between the latch and striking plate must be lubricated with grease that has the appropriate application temperature (e.g. FINA Marson EPL2 or equivalent) for the application area.

The following routine maintenance inspections must be performed at intervals of no more than one month or at least

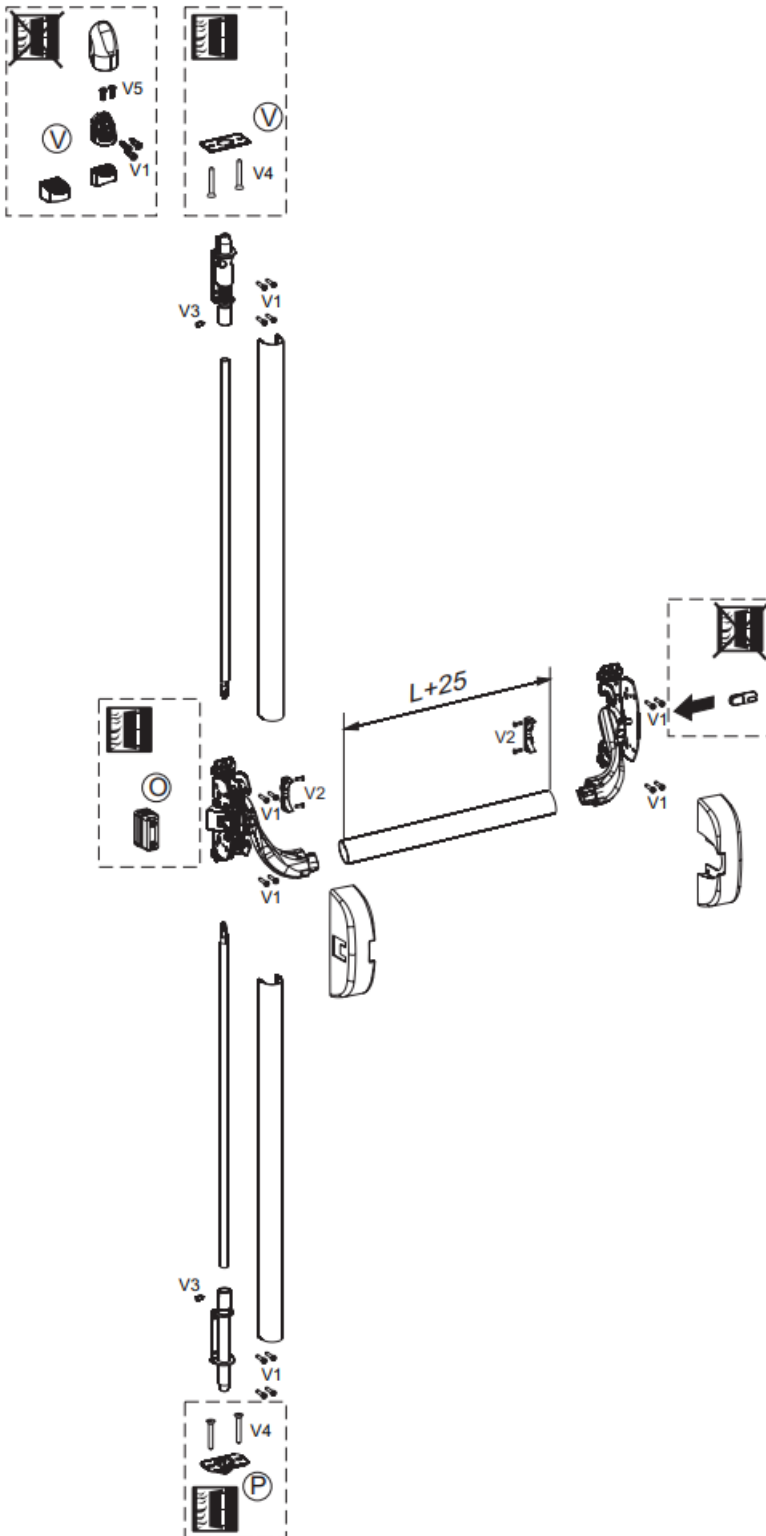
20,000 opening cycles for a guarantee according to the European Standard EN 1125:2008.

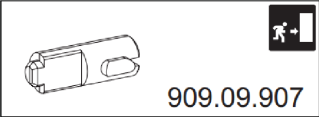
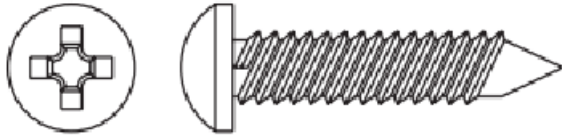
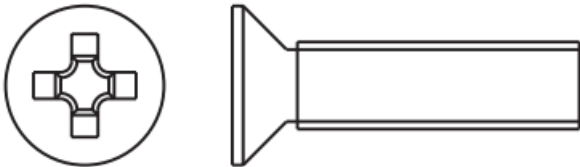

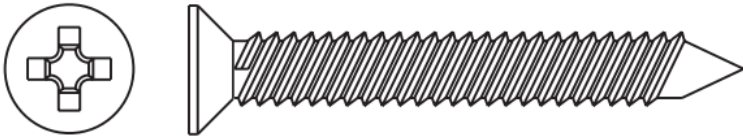
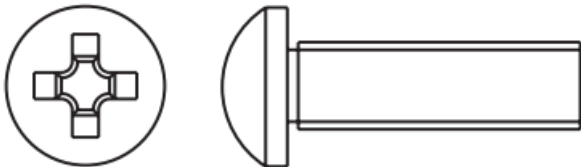
- a)** Inspection and activation of the panic lock to verify that all parts of the lock are in a satisfactory operational condition; measure and record the forces necessary for opening the lock by using a dynamometer.
- b)** Verify that the striking plate(s) are not blocked;
- c)** Verify that the panic door lock was lubricated according to item 19 in chapter 3;
- d)** Verify that no additional locks were mounted on the door since the original assembly;
- e)** Regularly verify that all parts of the system continue to conform with the original list of certified parts delivered with the system;
- f)** Regularly verify that the touch bar is properly seated and measure the forces required for opening the lock using a dynamometer; verify that the actuating forces do not deviate too much from the values measured during the original installation.

Exploded view

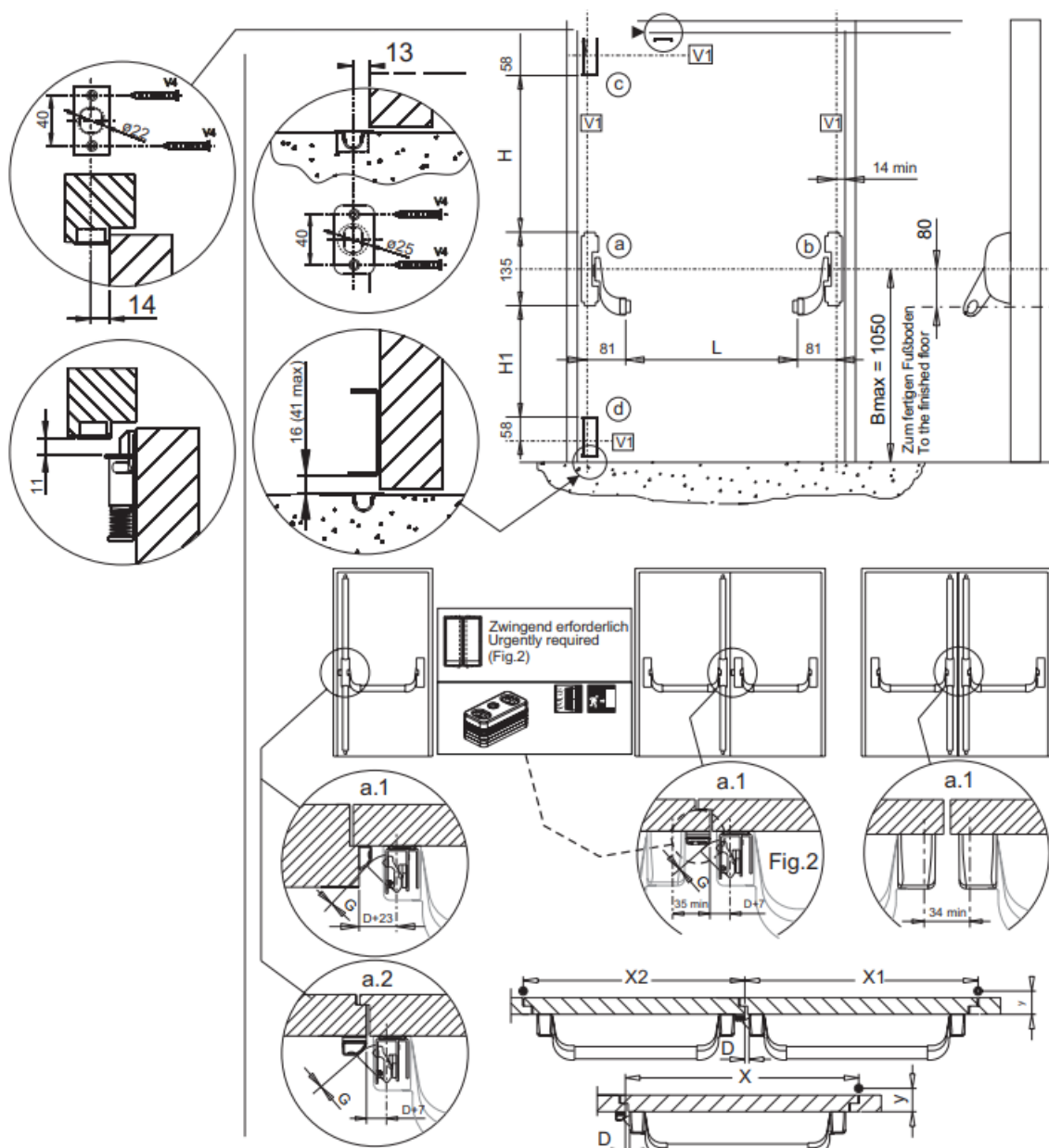


The installation instructions are enclosed with the lever handle for PED 200 / PED 210.



<div>  909.09.907 </div>		
V1		Ø4.2×19
V2		M4×16
V3		M4×4
V4		Ø4.2×38
V5		M4×12

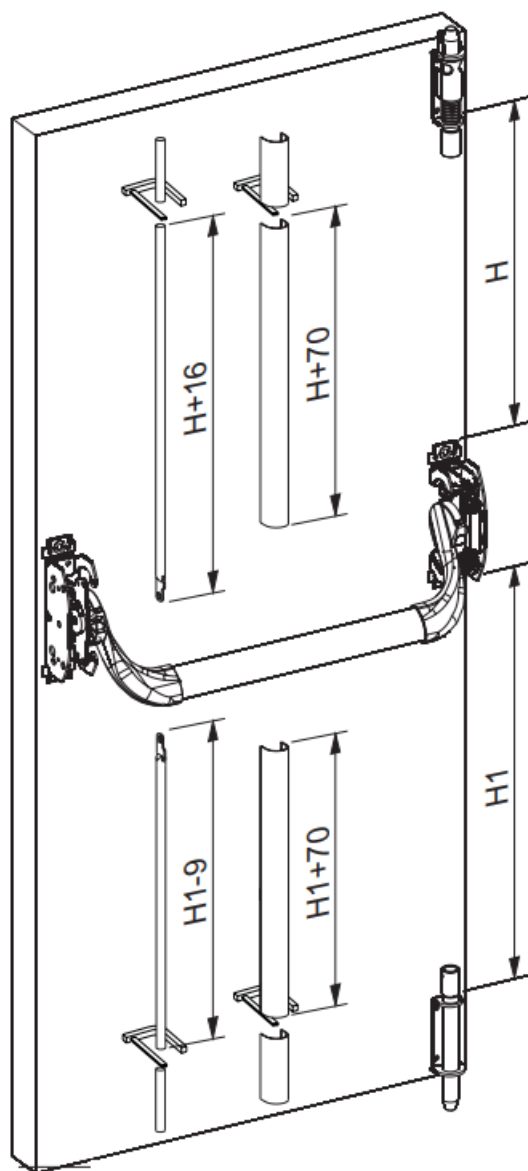
Positioning the touchbar on the door leaf



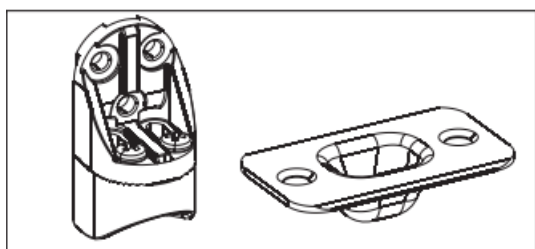
Dimension D must be between 9 mm and 12 mm after the assembly. Dimension D may not be greater than 12 mm.

If dimension D is greater than 12 mm, the touch bar may not be assembled, since the latch does not take a hold of the striking plate. The distance between the striking plate and the latch must be set at zero for a perfect locking operation (dimension G).

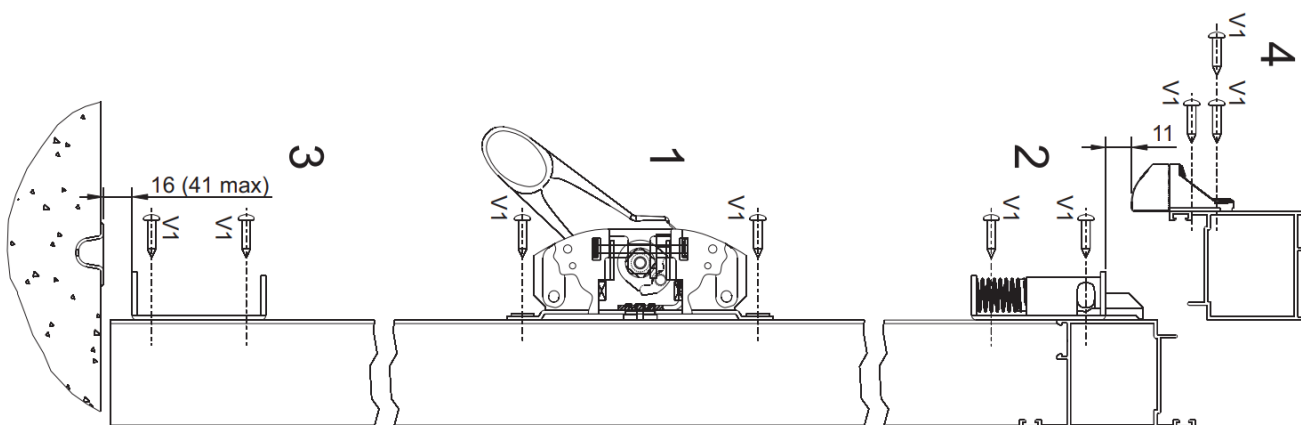
Shortening the bar, connecting bar and cover



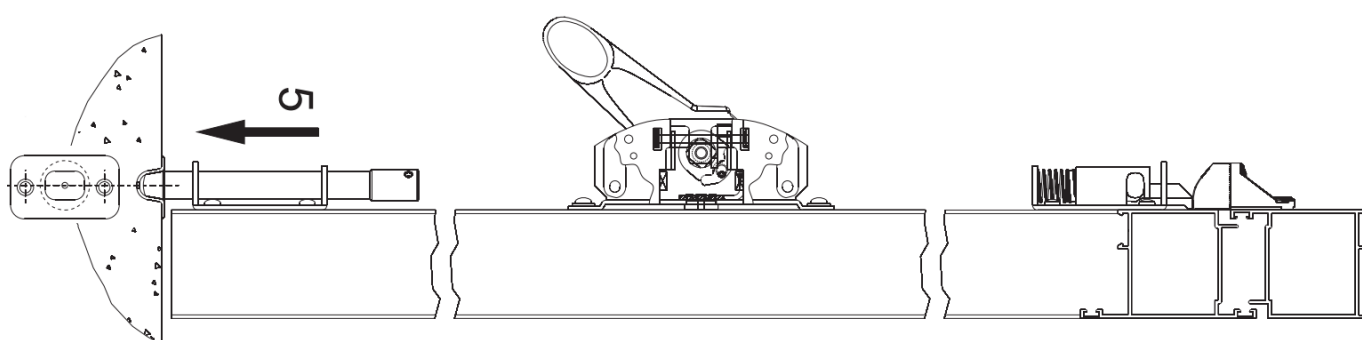
Installation steps



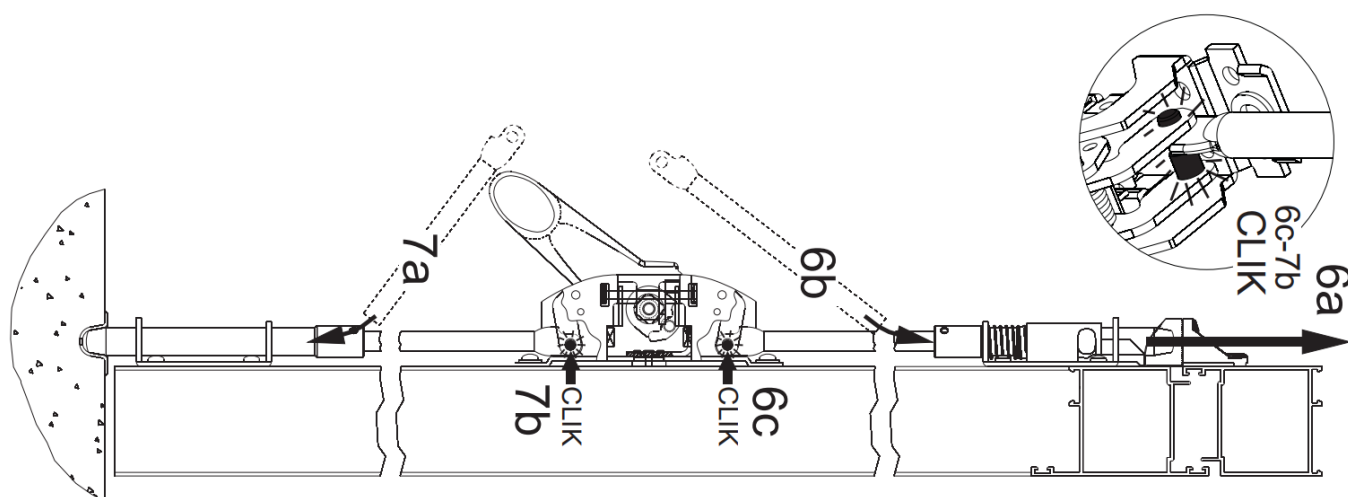
8a Install the central lock (1), the upper latch (2) and the lower latch (3) consecutively. Install the striking plate on the soffit (top frame) (4).



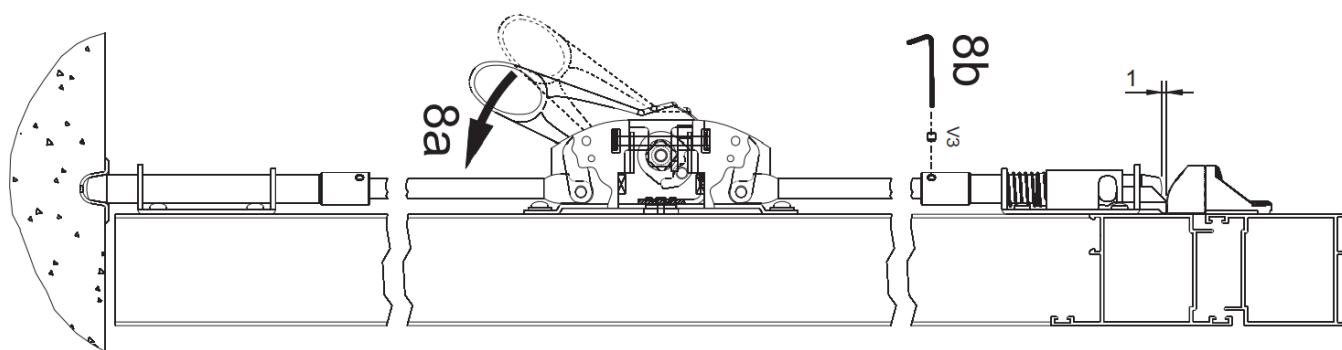
8b Place the lower shoot bolt into the guide (5) when the door is closed and let it drop into the floor socket.



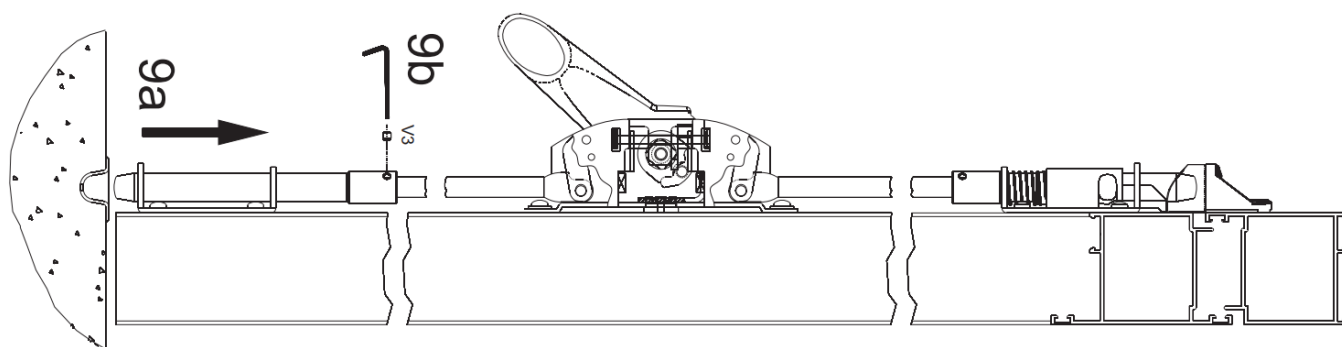
8c Insert the upper shoot bolt into the guide (6a). Align the bar as shown in the figure (6b) and insert it completely into the shoot bolt. Connect the bar on the central lock (6c). Insert the lower bar completely into the shoot bolt (7a) and connect it on the central lock (7b).



8d Completely push down the touch bar, continue to push and install the upper shoot bolt (8b) with pin at a distance of 1 mm to the edge of the top striking plate. Release the bar.



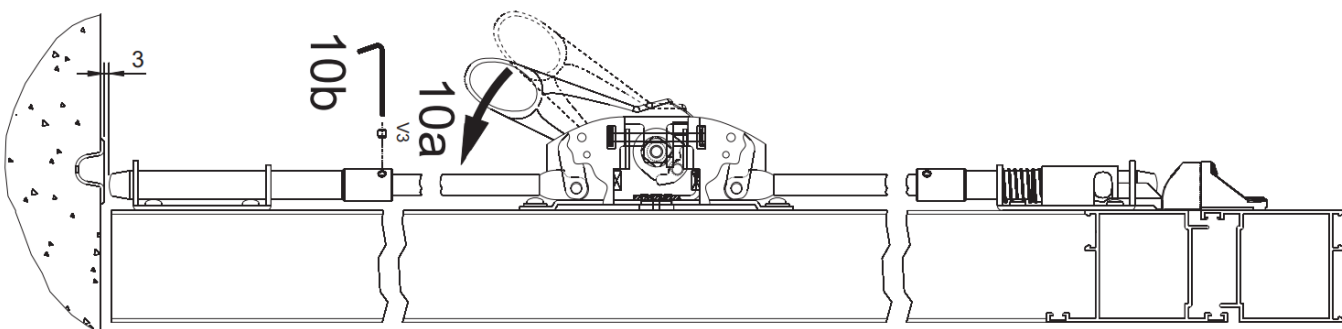
8e Remove the lower shoot bolt from the striking plate (9a) and temporarily attach it on the bar with the pin (9b).



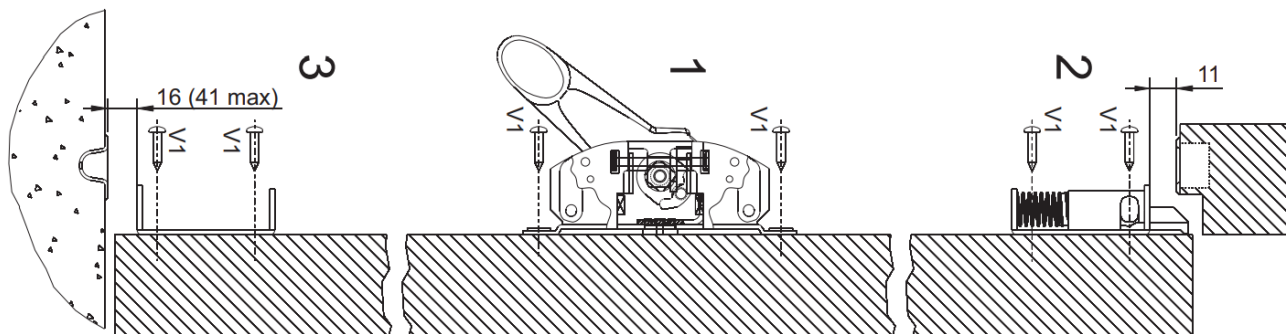
8f Slowly push the touch bar (10a) only so far until the door opens. Slightly open the door (approx. 1 cm), release the touch bar.

Unscrew the pin (10b). Reposition and install the shoot bolt (10b) at a distance of 3 mm to the striking plate edge. Slowly push the touch bar only so far until the door opens. Check that the minimum play between the lower shoot bolt and the floor remains over 3 mm in all pivot points.

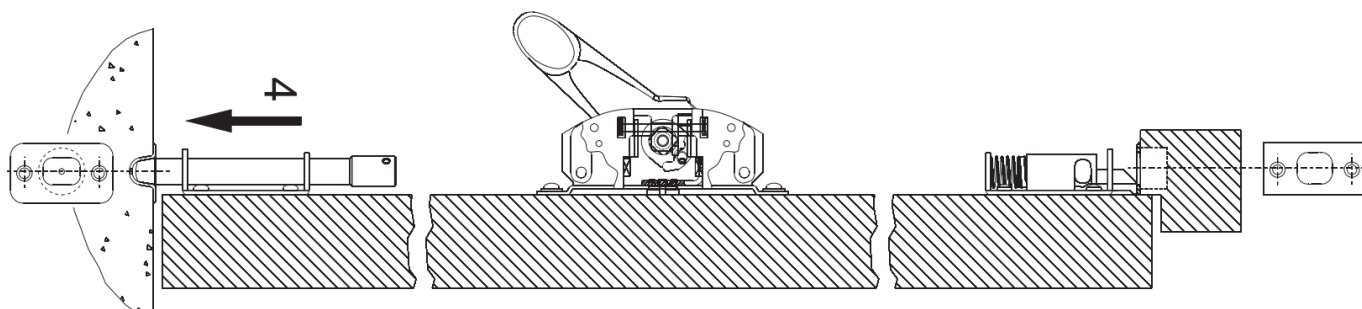
Installation phases



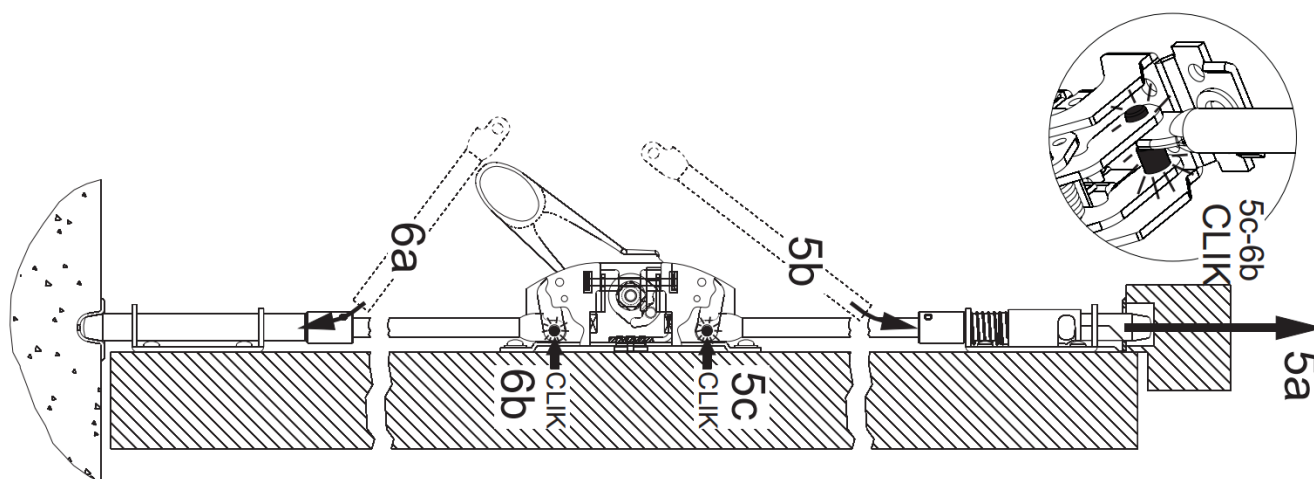
9a Install the central lock (1), the upper latch (2) and the lower latch (3) consecutively.



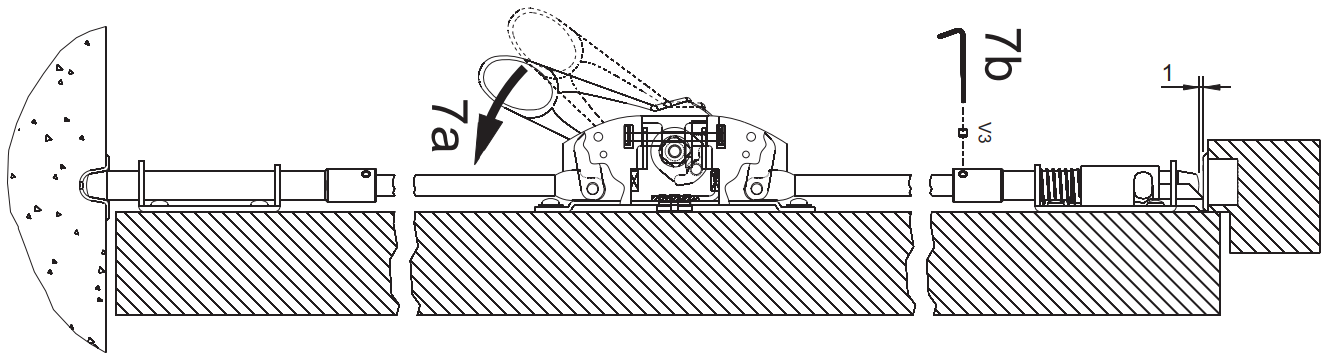
9b Place the lower shoot bolt in the guide (4) when the door is closed and let it drop into the floor socket.



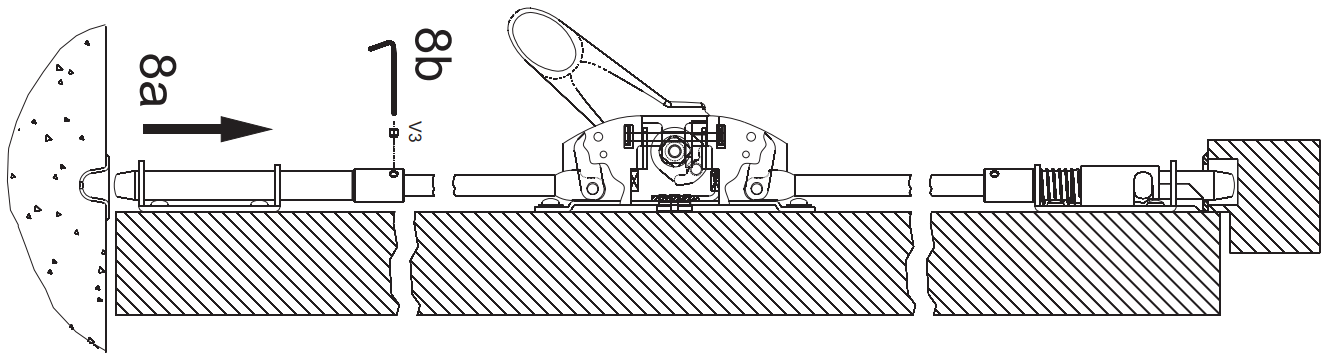
9c Insert the upper shoot bolt in the guide (5a). Align the bar as in the figure (5b) and completely insert into the shoot bolt. Connect the bar to the central lock (5c). Insert the lower bar completely in the shoot bolt (6a) and connect it on the central lock (6b).



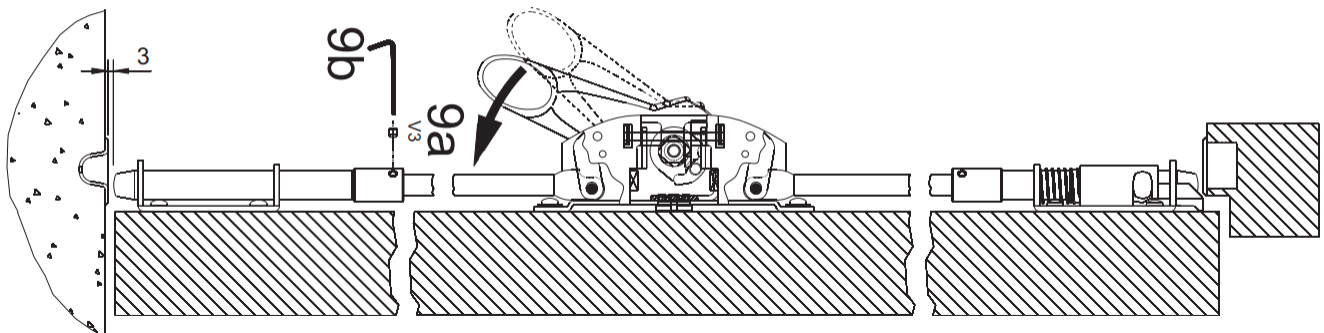
9d Completely push down the touch bar (7a), continue to push it and install the upper shoot bolt (7b) at a 1 mm distance from the upper striking plate by using a pin. Release the bar.



9e Remove the lower shoot bolt from the striking plate (8a) and attach it temporarily to the bar by using the pin (8b).

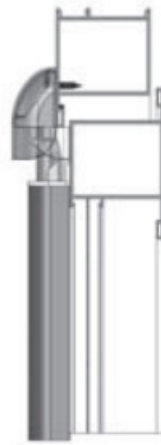
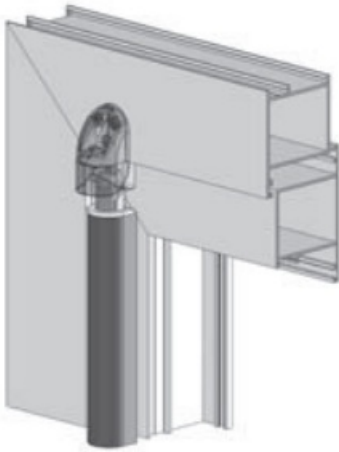


9f Slowly push the touch bar (9a) only so far until the door opens. Slightly open the door (approx. 1 cm), release the touch bar.
 Unscrew the pin (9b). Reposition and install the shoot bolt (9b) at a distance of 3 mm from the striking plate edge. Slowly push the touch bar only so far until the door opens. Check that the minimum play between the lower shoot bolt and the floor remains above 3 mm in all pivot points.

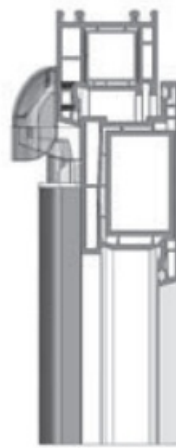
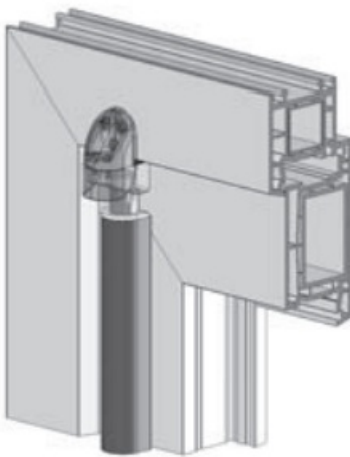


Installation instructions for adjustable striking plates

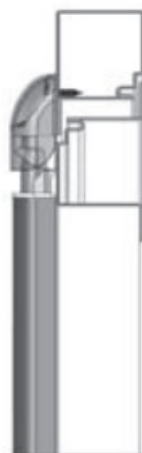
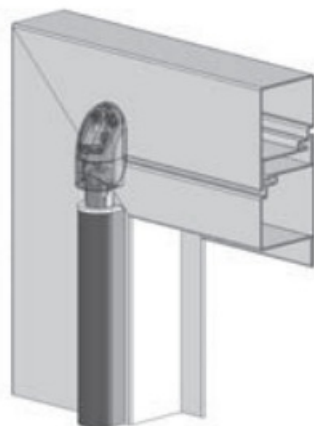
Installation on aluminum profile with a projection of 0 to 11 mm



Installation on PVC profile with a projection of 12 to 23 mm

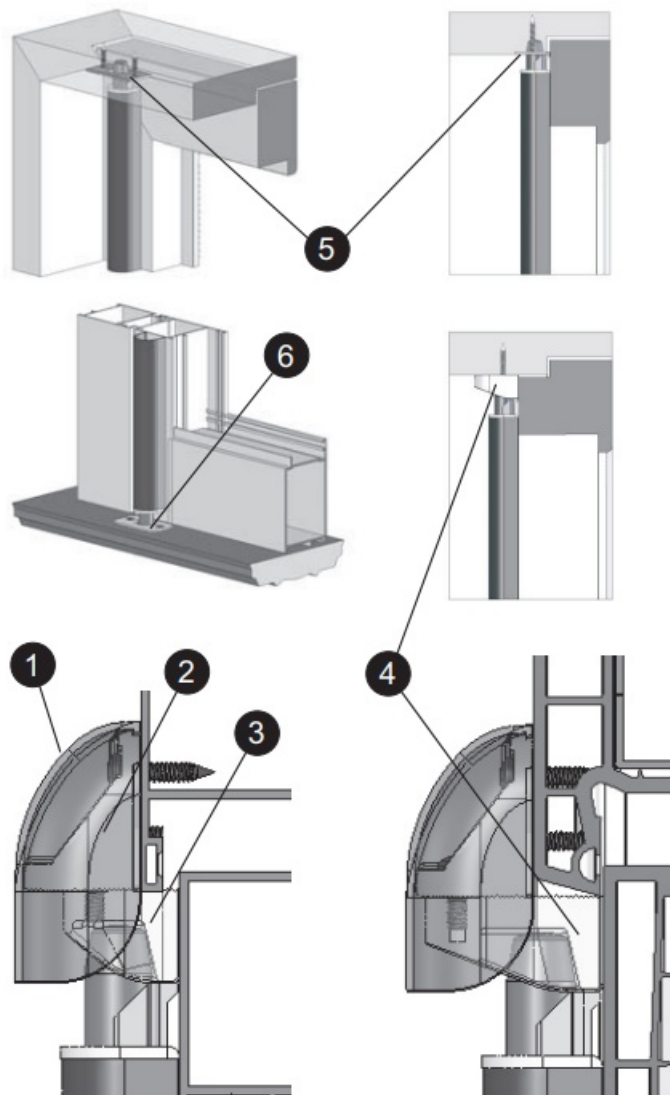


Installation on coplanar iron profile with a projection of 0 to 11 mm

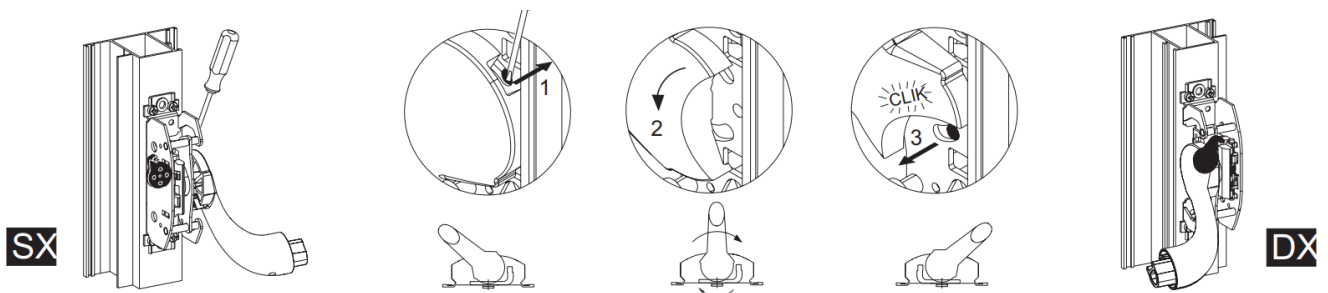


1. Striking plate cover of painted zinc alloy
2. Adjustable accessory for coplanar windows and doors with projections of 0 to 11 mm
3. Adjustable element for coplanar doors and rebated doors (rebate from 0 to 11 mm)

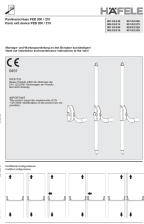
4. Adjustable accessory for windows and doors with projections of 12 to 23 mm
5. Striking plate for floor lock



Selecting the opening direction



Visible latch retainer device

	<p>HAFELE 901.02.449 Panic Exit Device [pdf] Instruction Manual</p> <p>PED 200, PED 210, 901.02.449 Panic Exit Device, 901.02.449, Panic Exit Device, Exit Device, Device</p>
--	--

References

- [!\[\]\(95b42f0077faf7439a26242a54e021ec_img.jpg\) Furniture fittings, architectural hardware, electronic locking systems - Häfele](#)