



HAFELE 833.89 Series Modular Surface Mounted Switch Instructions

[Home](#) » [HAFELE](#) » HAFELE 833.89 Series Modular Surface Mounted Switch Instructions 

Contents

- [1 HAFELE 833.89 Series Modular Surface Mounted Switch](#)
- [2 Product Information](#)
- [3 Product Usage Instructions](#)
- [4 DIMENSION](#)
- [5 WHAT IN THE BOX](#)
- [6 INSTALLATION INSTRUCTIONS](#)
- [7 Documents / Resources](#)
 - [7.1 References](#)
- [8 Related Posts](#)

HAFELE

HAFELE 833.89 Series Modular Surface Mounted Switch



Product Information

The 732.28.250 Modular Surface Mounted Switch is a product that operates at 24V with a capacity of 350mA. The product has a Loox voltage of 12V and 24V with a maximum load of 100%. The product has dimensions of d (mm) mm and is compatible with HDE 22.02.2022.

Product Usage Instructions

1. Ensure that the product is compatible with your device before installation.
2. Connect the product to a power source of 24V and up to 350mA.
3. For Loox voltage, connect the product to a power source of either 12V or 24V.
4. Ensure that the maximum load does not exceed 100%.
5. Refer to the product manual for specific wiring instructions.
6. Mount the product on a surface using screws or adhesive, as appropriate.

DIMENSION

<div>12 V System</div> <div>24 V System</div> <div>350 mA System</div>			T_A					
<div>833.89.134 </div> <div>833.89.176 </div> <div>833.89.177 </div>			N/A	N/A	<div>-20 °C – +45 °C</div> <div>-4 °F – +113 °F</div>	<div>40 x 40 x 8.5</div> <div>≥ 50 x 50 x 18.5</div>	<div>Loox</div> <div>12 V</div> <div>Loox</div> <div>24 V</div> <div>Loox</div> <div>350 mA</div>	
<div>833.89.135 </div> <div>833.89.178 </div> <div>833.89.179 </div>			0 – 75					
<div>833.89.136 </div> <div>833.89.180 </div> <div>833.89.181 </div>			0 – 75					
<div>833.89.137 </div> <div>833.89.182 </div> <div>833.89.183 </div>			0 – 100					

WHAT IN THE BOX

833.89.134

833.89.176

833.89.177

A

2X B

833.89.135

833.89.178

833.89.179

833.89.136

833.89.180

833.89.181

833.89.137

833.89.182

833.89.183

A

2X B

E

(833.89.137,
833.89.182,
833.89.183)

+

C

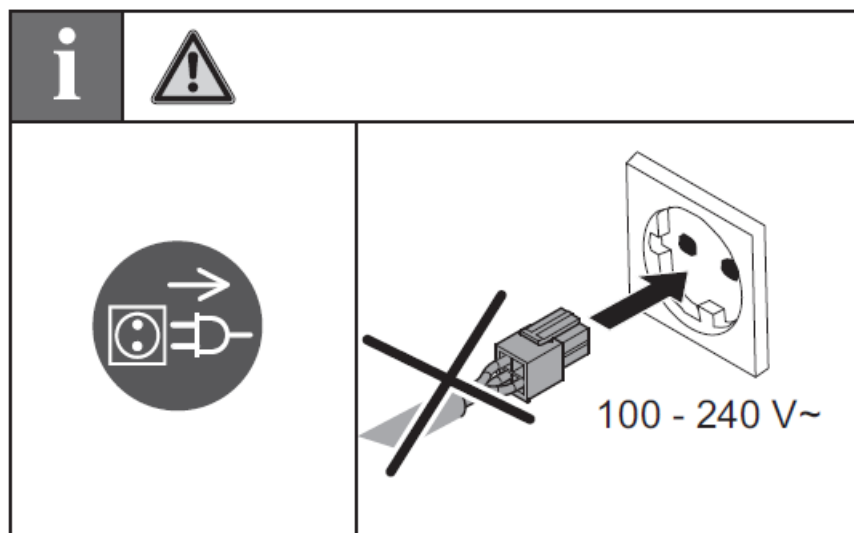
X

500	833.89.140
1000	833.89.141
2000	833.89.142

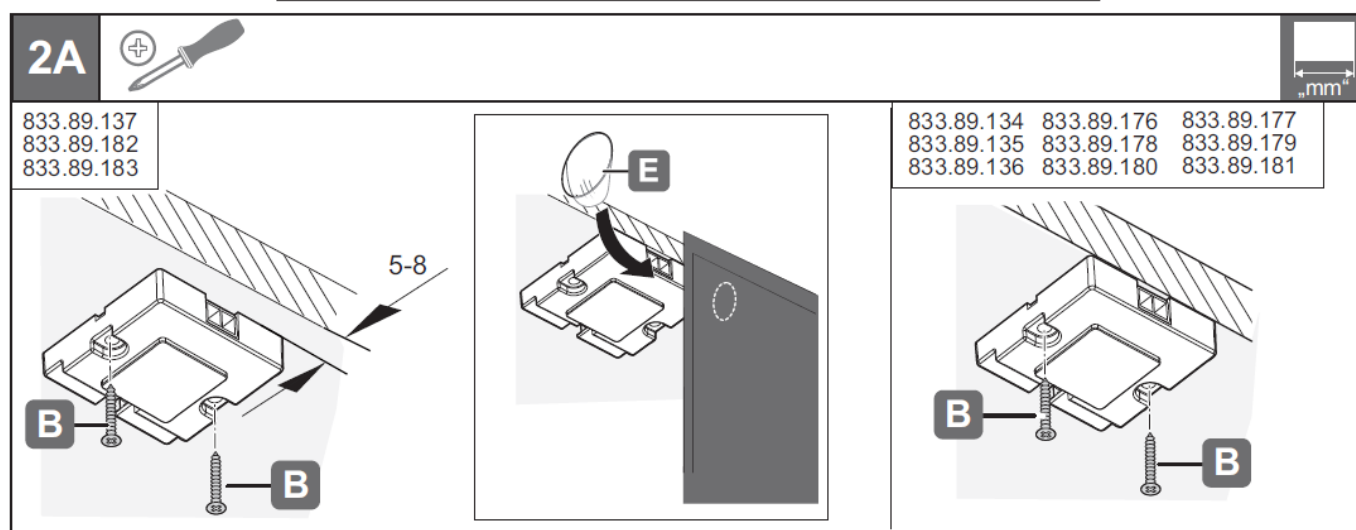
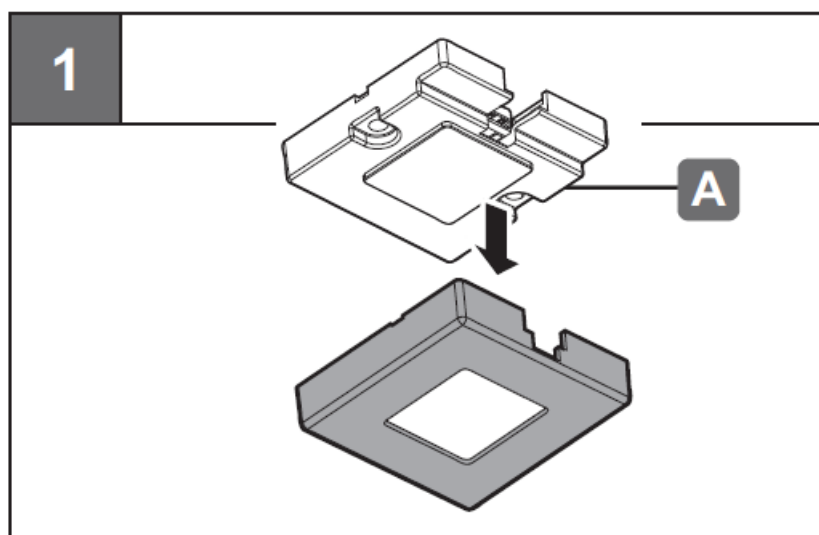
+

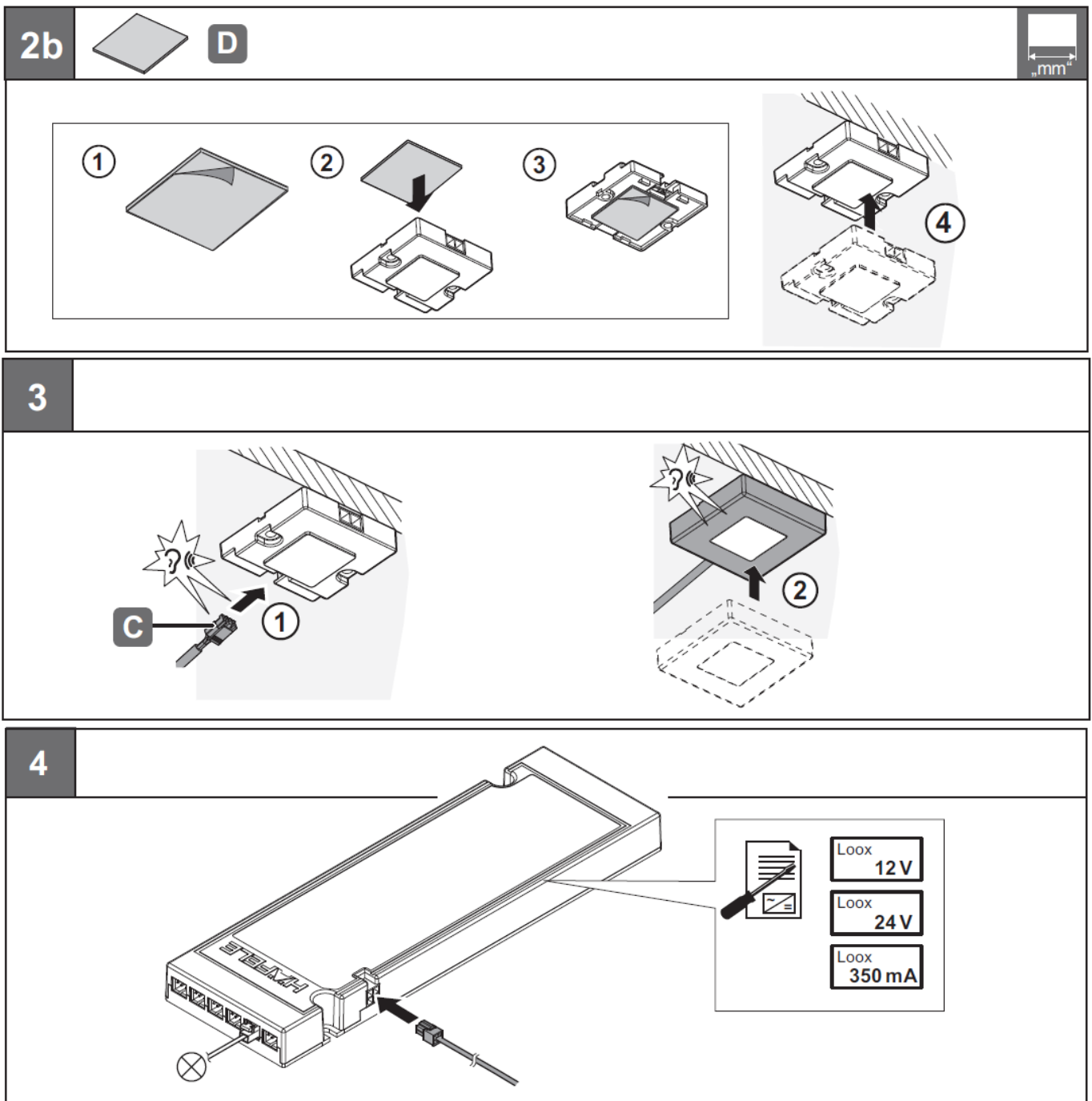
D

ATTENTION



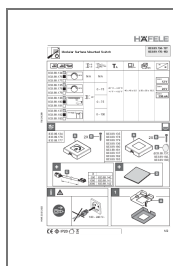
INSTALLATION INSTRUCTIONS





© 2022 by Häfele SE & Co KG Adolf-Häfele-Str. 1 · D-72202 Nagold · www.hafele.com

Documents / Resources



[HAFELE 833.89 Series Modular Surface Mounted Switch](#) [pdf] Instructions
732.28.250, 833.89.134-137, 833.89.176-183, 833.89 Series Modular Surface Mounted Switch,
833.89 Series, 833.89 Series Switch, Modular Surface Mounted Switch, Switch

References

-  [Furniture fittings, architectural hardware, electronic locking systems - Häfele](#)

