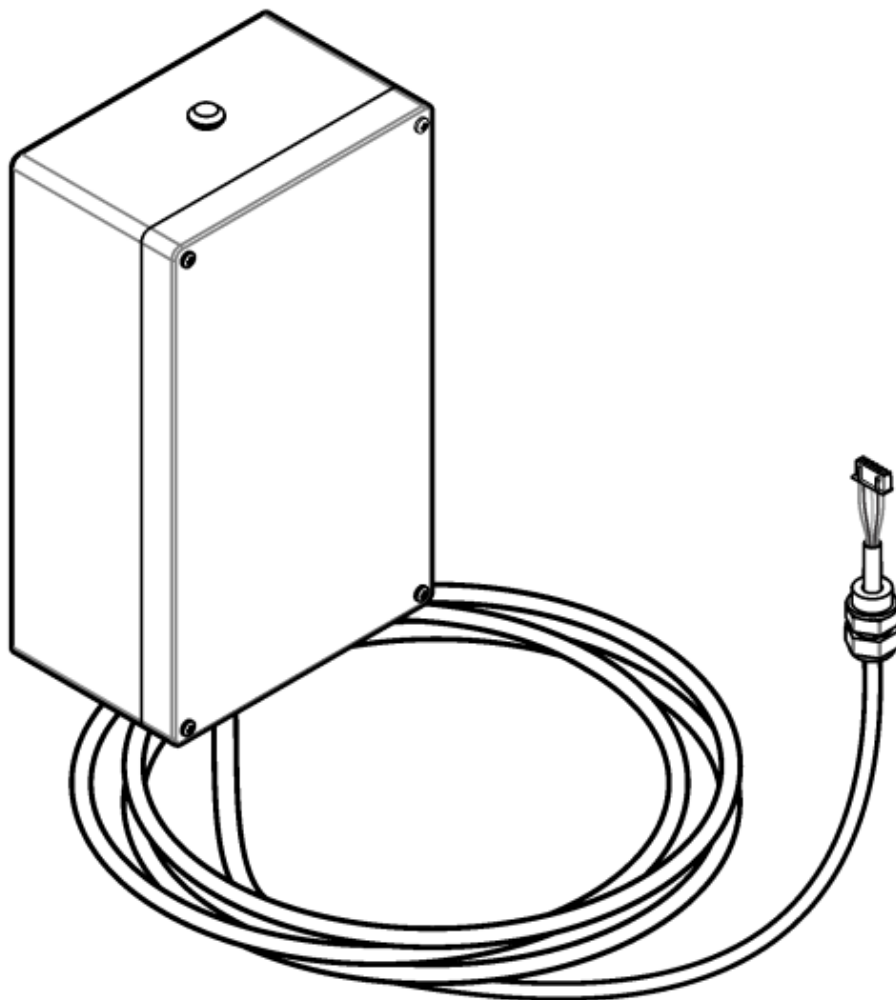




HACH SC4200c Controller External USB Box Instruction Manual

[Home](#) » [HACH](#) » HACH SC4200c Controller External USB Box Instruction Manual 

HACH SC4200c Controller External USB Box



Contents

[1 General information](#)

[1.1 Safety information](#)

[1.2 Use of hazard information](#)

[1.3 Precautionary labels](#)

[1.4 Product overview](#)

[1.5 Product components](#)

[2 Installation](#)

[2.1 Mounting](#)

[2.2 Connect the cable to the connector](#)

[2.3 Connect the modem or WiFi adapter](#)

[3 Configuration](#)

[4 Accessories](#)

[5 CUSTOMERS SUPPORT](#)

[6 Documents / Resources](#)

[6.1 References](#)

[7 Related Posts](#)

General information

In no event will the manufacturer be liable for direct, indirect, special, incidental or consequential damages resulting from any defect or omission in this manual. The manufacturer reserves the right to make changes in this manual and the products it describes at any time, without notice or obligation.

Revised editions are found on the manufacturer's website.

Safety information

NOTICE

The manufacturer is not responsible for any damages due to misapplication or misuse of this product including, without limitation, direct, incidental and consequential damages, and disclaims such damages to the full extent permitted under applicable law. The user is solely responsible to identify critical application risks and install appropriate mechanisms to protect processes during a possible equipment malfunction.

Please read this entire manual before unpacking, setting up or operating this equipment. Pay attention to all danger and caution statements. Failure to do so could result in serious injury to the operator or damage to the equipment.

Make sure that the protection provided by this equipment is not impaired. Do not use or install this equipment in any manner other than that specified in this manual.

Use of hazard information

DANGER

Indicates a potentially or imminently hazardous situation which, if not avoided, will result in death or serious injury.

WARNING

Indicates a potentially or imminently hazardous situation which, if not avoided, could result in death or serious injury.

CAUTION





Indicates a potentially hazardous situation that may result in minor or moderate injury.

NOTICE

Indicates a situation which, if not avoided, may cause damage to the instrument. Information that requires special emphasis.

Precautionary labels

Read all labels and tags attached to the instrument. Personal injury or damage to the instrument could occur if not observed. A symbol on the instrument is referenced in the manual with a precautionary statement.

	This symbol, if noted on the instrument, references the instruction manual for operation and/or safety information.
	This symbol indicates that a risk of electrical shock and/or electrocution exists.
	This symbol indicates the presence of devices sensitive to Electro-static Discharge (ESD) and indicates that care must be taken to prevent damage with the equipment.
	Electrical equipment marked with this symbol may not be disposed of in European domestic or public disposal systems. Return old or end-of-life equipment to the manufacturer for disposal at no charge to the user.

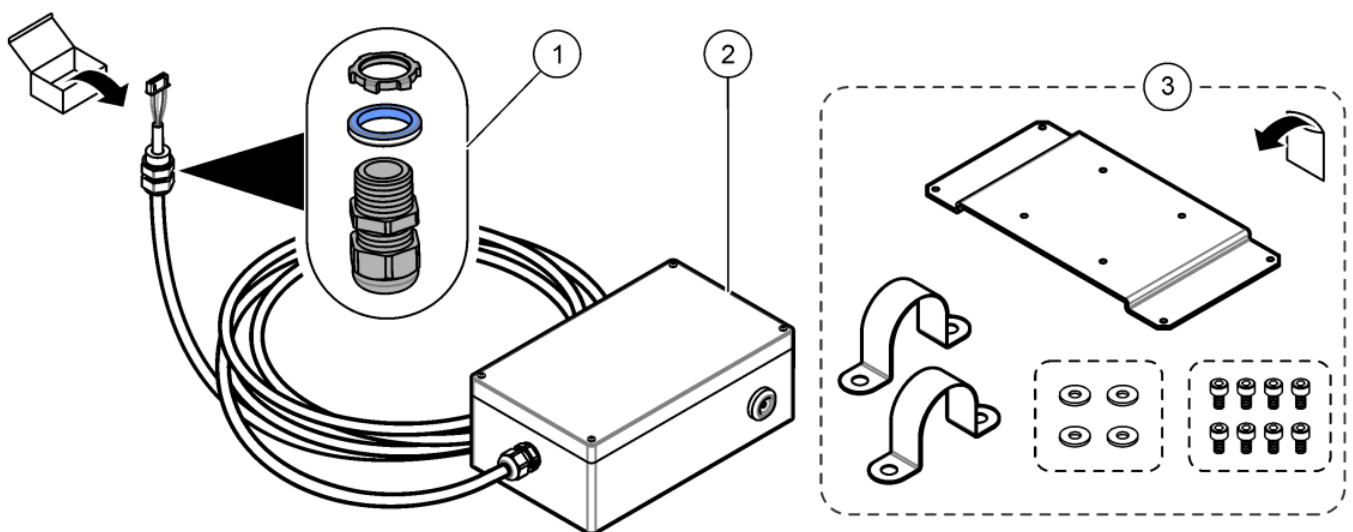
Product overview

The external USB box is used to connect an USB device to the SC4x00c controller (e.g., an USB wireless modem).

Product components

Make sure that all components have been received. Refer to Figure 1. If any items are missing or damaged, contact the manufacturer or a sales representative immediately.

Figure 1 Product components



1. Strain relief, washer and nut
2. USB box with cable
3. Pole mounting hardware¹

Installation

DANGER



Multiple hazards. Only qualified personnel must conduct the tasks described in this section of the document.

Mounting

Install the USB box in a location where the power disconnect device for the controller is easily operated. Install the USB box in the location with the highest cellular signal strength.

Attach the USB box to a wall, vertical pole or horizontal pole. Refer to the illustrated steps in Figure 2 or Figure 3.

Note: Wall mounting hardware is supplied by the user. Screws/fitings must be suitable for the wall/ceiling properties and possess sufficient bearing capacity.

1. The pole mounting hardware is for a 40-mm (1.57-in.) diameter pole.

Figure 2 Wall mounting—USB box

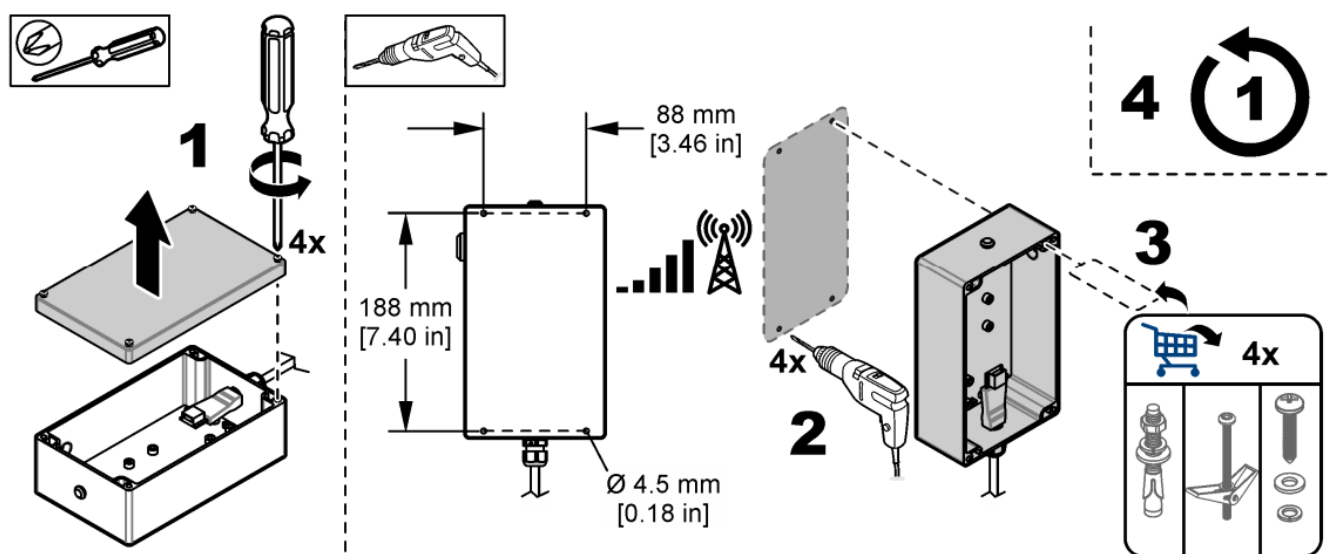
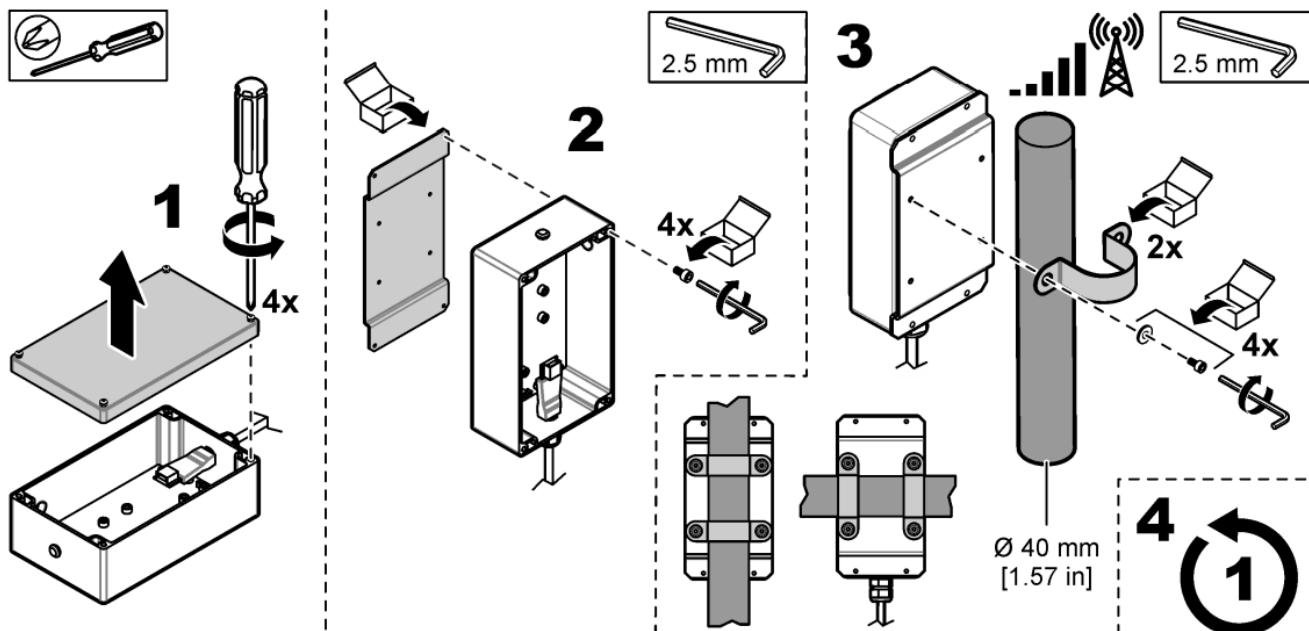


Figure 3 Pole mounting—USB box



Connect the cable to the connector

⚠ DANGER



Electrocution Hazard. Always remove power from the instrument before making any electrical connections.

⚠ DANGER



Electrocution hazard. High voltage wiring for the controller is conducted behind the high voltage barrier in the controller enclosure. The barrier must remain in place unless a qualified installation technician is installing wiring for power, alarms, or relays.

⚠ WARNING



Explosion hazard. This manual is only for installation of the unit in a non-hazardous location. For installation of the unit in hazardous locations, use only the instructions and approved control drawing provided in the hazardous location installation manual.

NOTICE



Potential Instrument Damage. Delicate internal electronic components can be damaged by static electricity, resulting in degraded performance or eventual failure.

NOTICE

The manufacturer recommends the use of manufacturer-supplied electrical components, such as power cord, connectors and strain relief fittings.

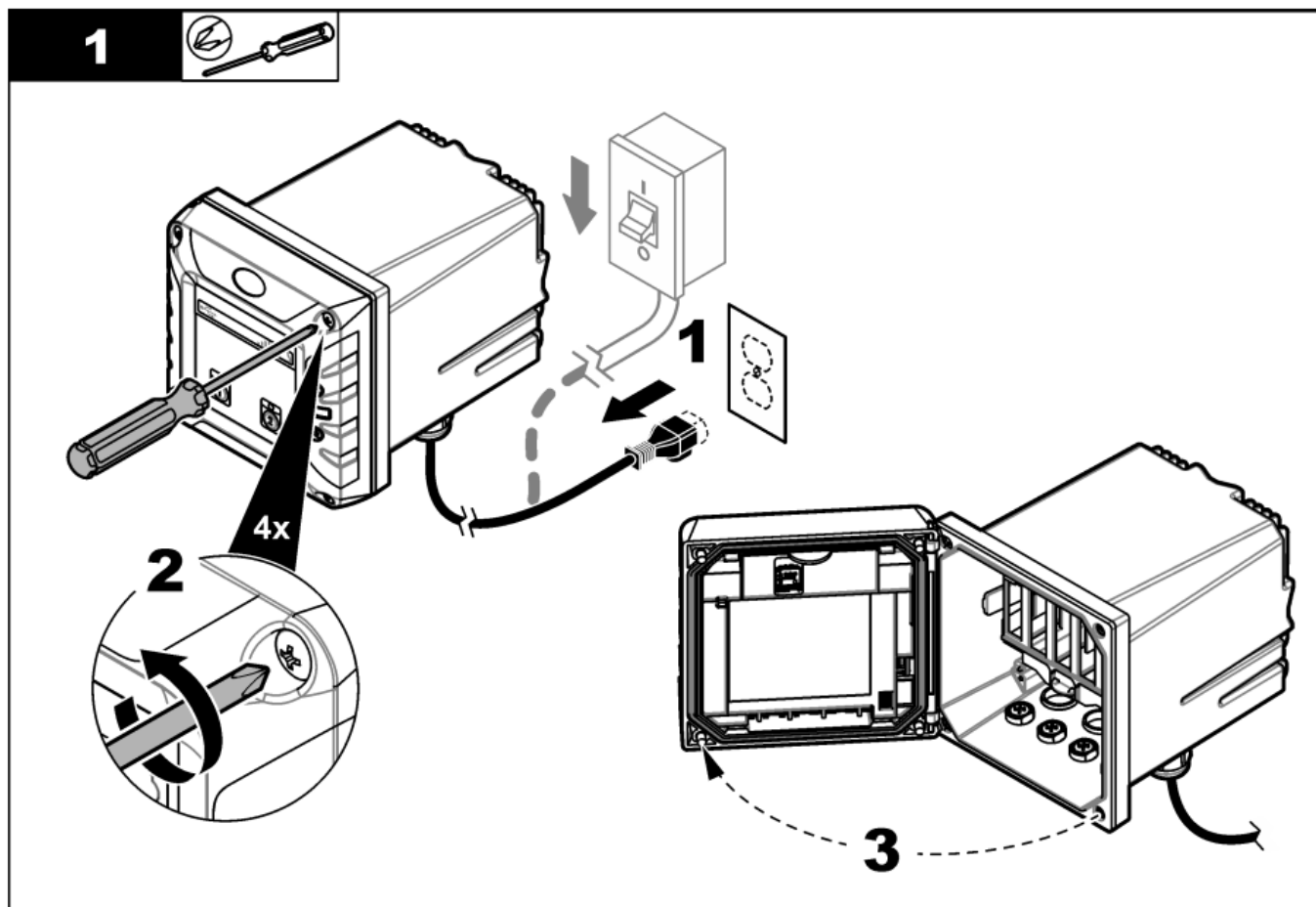
NOTICE

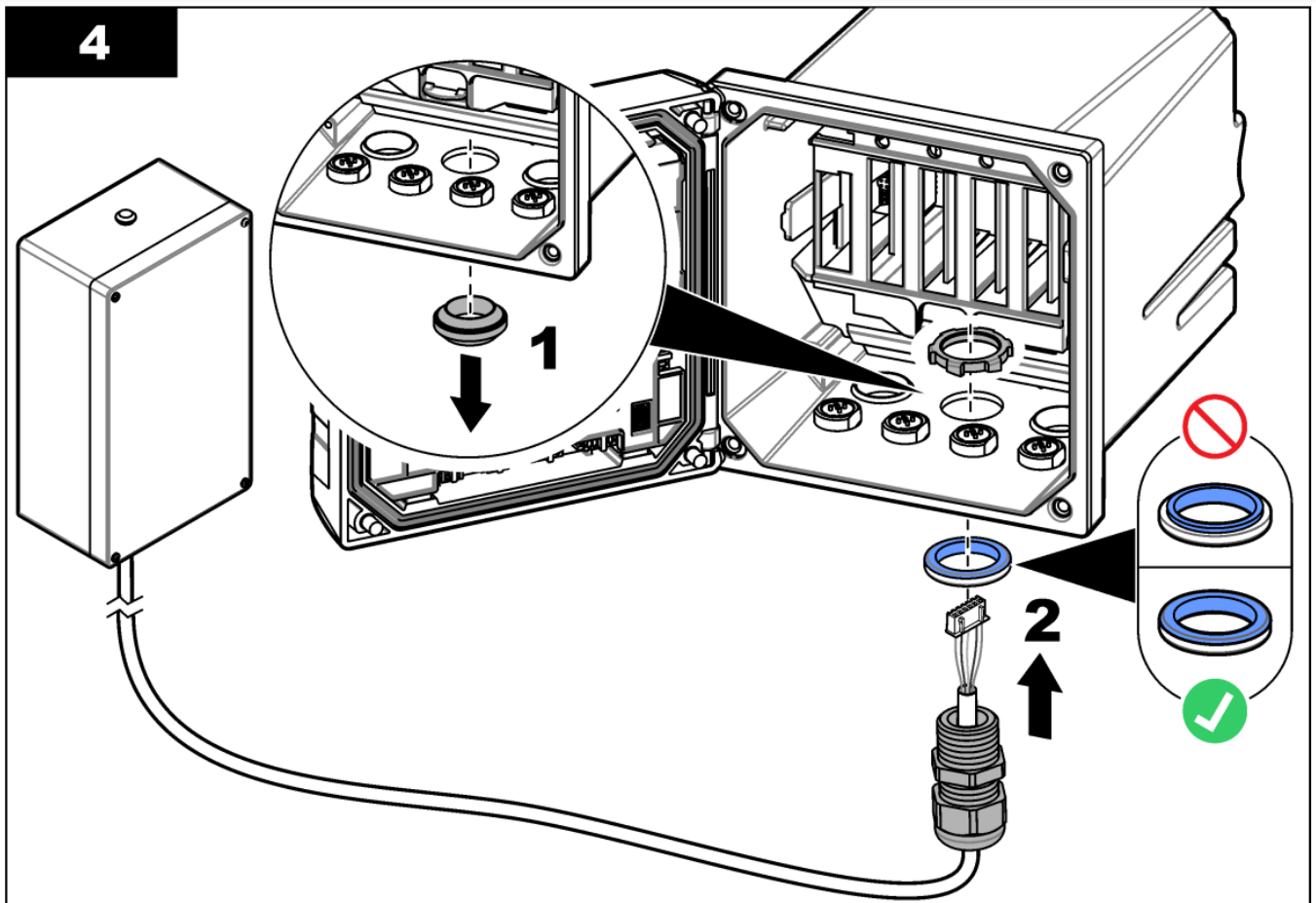
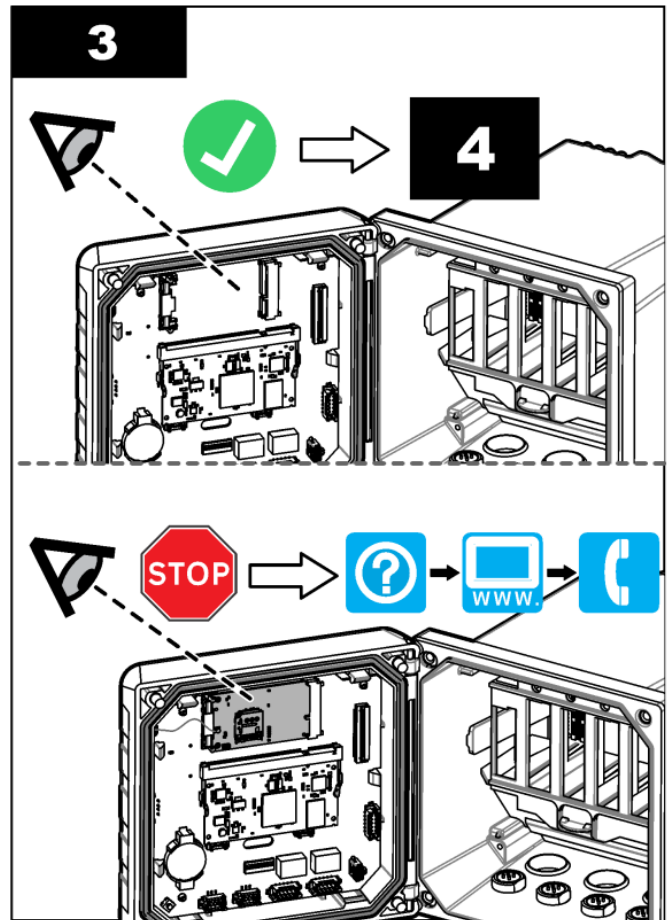
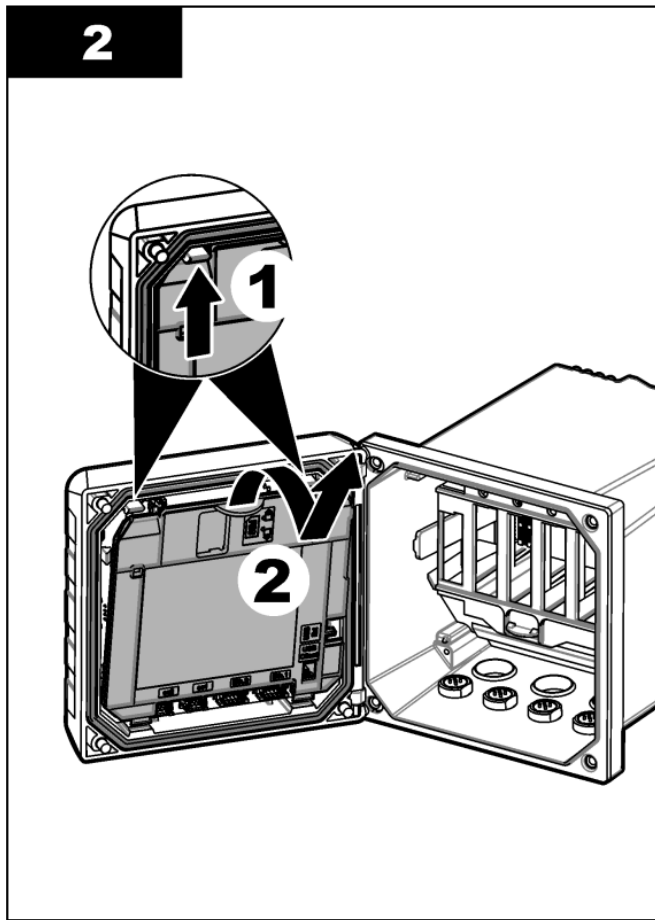


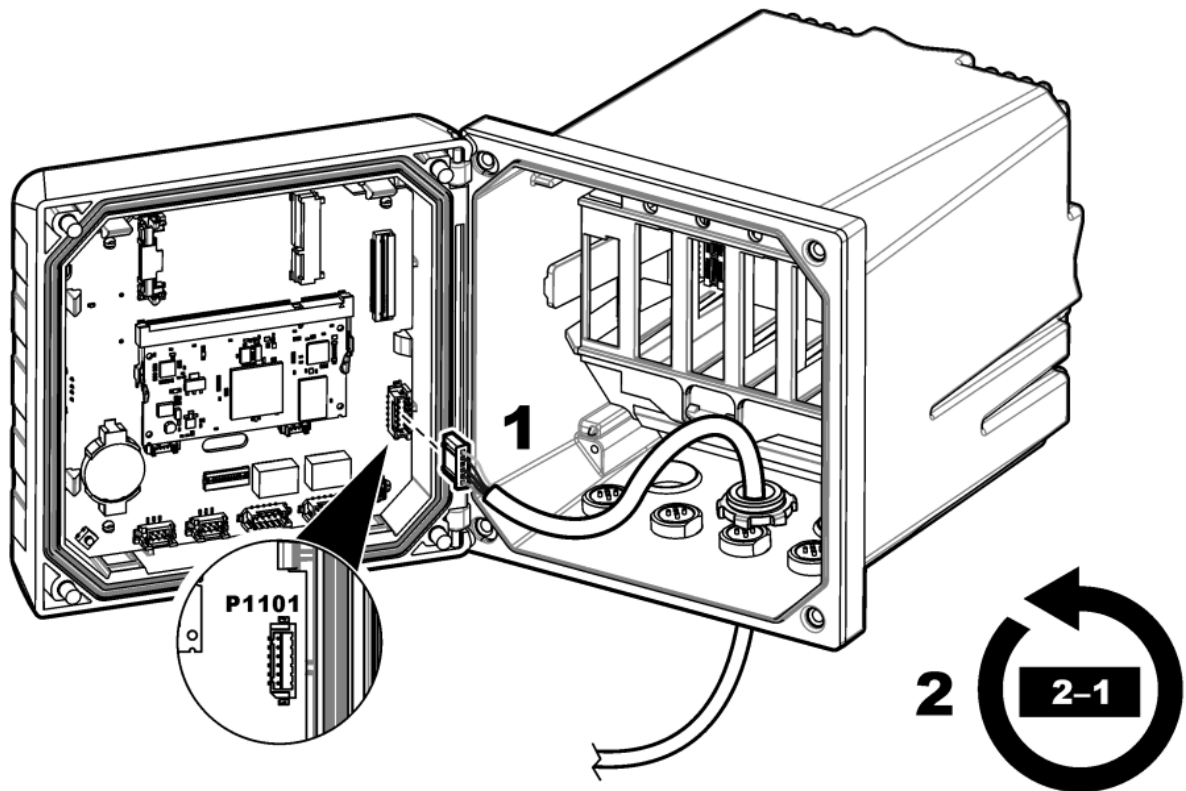
Make sure that the cable sheath goes through the inner side of the enclosure to keep the environmental rating of the enclosure.

Connect the USB box cable to the USB Ext connector (P1101) in the controller. Refer to the illustrated steps that follow.

Note: If the controller has an internal modem board, contact technical support. Refer to illustrated step 3.







Connect the modem or WiFi adapter

Do the steps that follow to connect an external USB wireless modem or WiFi adapter to the controller.

Install the SIM card and connect the modem to the USB box. As an alternative, connect a WiFi adapter to the USB box. Make sure that the controller is energized for a minimum of 5 minutes before the modem or WiFi adapter is connected. Examine the signal strength and network connection condition.

Install the USB box in the location with the highest cellular signal strength. Use a mobile device with the same cellular service provider as the SC4x00c controller to find the location with the highest cellular signal strength.

Items to collect:

- Mini SIM card
- USB modem or WiFi adapter

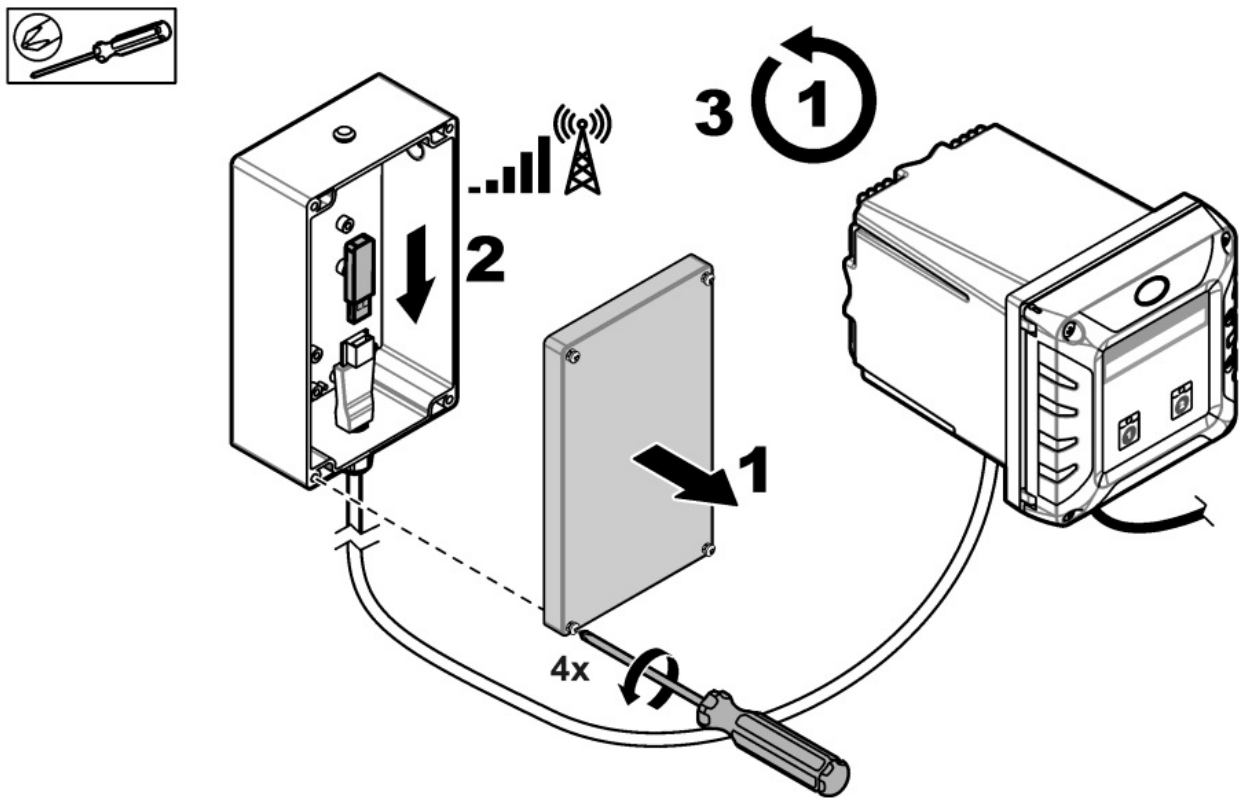
1. Install the SIM card in the modem.

NOTICE

Make sure that the orientation of the SIM card is correct. Refer to the documentation supplied with the modem.

2. Remove the cover from the USB box. Refer to Figure 4.
3. Supply power to the controller.
4. Connect the modem or WiFi adapter to the USB port in the USB box.
5. Make sure that the modem is energized.
6. Wait a minimum of 5 minutes.

7. Install the cover on the USB box.



Configuration

Refer to the controller documentation for instructions. Refer to the expanded user manual on the manufacturer’s website for more information.

Accessories

⚠ WARNING	
	Personal injury hazard. Use of non-approved parts may cause personal injury, damage to the instrument or equipment malfunction. The replacement parts in this section are approved by the manufacturer.

Note: Product and Article numbers may vary for some selling regions. Contact the appropriate distributor or refer to the company website for contact information.

Accessories

Description	Item no.
USB-Ethernet adapter	LZY472-01
RJ45 Ethernet cable	LZV873
WiFi USB adapter for US, 2.4/5 GHz	LZY996
WiFi USB adapter for EU, 2.4/5 GHz	LZY997
Verizon dongle kit for US	LXZ524.99.00039

CUSTOMERS SUPPORT




HACH COMPANY World Headquarters
P.O. Box 389, Loveland, CO 80539-0389 U.S.A.
Tel. (970) 669-3050
(800) 227-4224 (U.S.A. only)
Fax (970) 669-2932
orders@hach.com
www.hach.com

HACH LANGE GMBH
D-40549 Düsseldorf, Germany
Tel. +49 (0) 2 11 52 88-320
Fax +49 (0) 2 11 52 88-210
info-de@hach.com
www.de.hach.com



HACH LANGE
6, route de Compose
1222 Veenas
SWITZERLAND
Tel. +41 22 594 6400
Fax +41 22 594 6499



Documents / Resources

 <p>SC4200c External USB box</p>	<p>HACH SC4200c Controller External USB Box [pdf] Instruction Manual SC4200c Controller External USB Box, SC4200c, Controller External USB Box, External USB Box, USB Box, Box</p>
---	--

References

-  [Geräte und Reagenzien für die Wasserqualitätsanalyse | Hach](#)
-  [Hach | Hach](#)
- [User Manual](#)

Manuals+.