

 **H. IKEUCHI**
Dry Fog
Humidifying



H IKEUCHI Dry Fog Humidifying Owner's Manual

[Home](#) » [H IKEUCHI](#) » H IKEUCHI Dry Fog Humidifying Owner's Manual 

Contents

- [1 H IKEUCHI Dry Fog Humidifying](#)
- [2 Check the contents of the box.](#)
- [3 Parts Description](#)
- [4 How to Install](#)
- [5 CONTACT](#)
- [6 Documents / Resources](#)
 - [6.1 References](#)
- [7 Related Posts](#)



H IKEUCHI Dry Fog Humidifying



Thank you for purchasing the AKIMist Humidifier with Hanging-down (NP) Kit (w/o plate). To properly use the installation kit, please read this instruction manual.

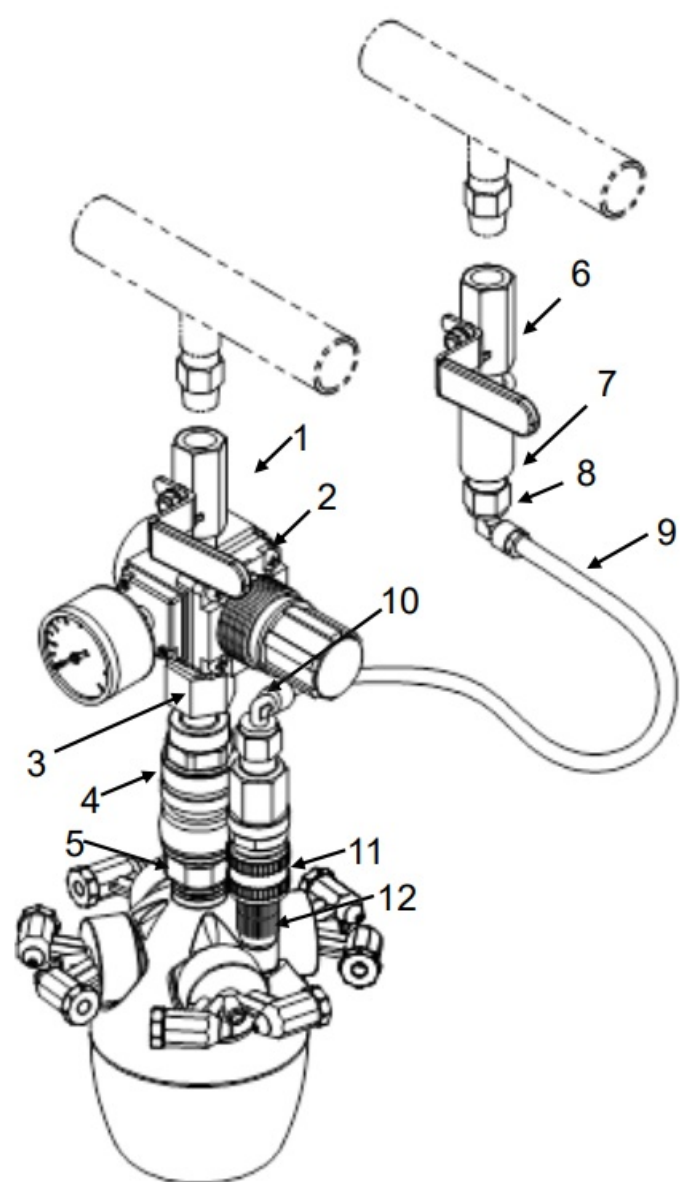
Check the contents of the box.

Contents

AKIMist with connection kit, AKIMist Instruction Manual, and this manual

Parts Description

For other order of spare parts, use the specific description and code number below.



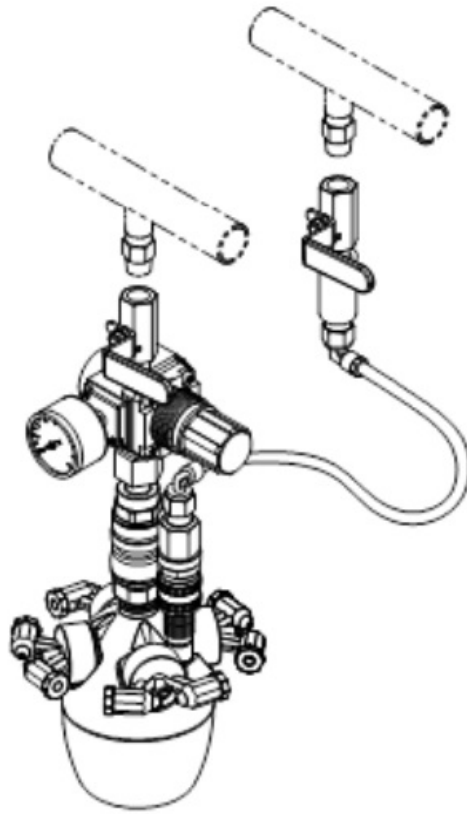
Section	Part No	Description	Material*	Code No.
Air Line	1	Valve (Red)	S304	#289481
	2	Pressure Regulator (with a pressure gauge)	POM, aluminum	#265941
	3	Male-female Socket		#115787
	4	Coupler (Socket)		#193606
	5	Coupler (Plug)		#12234
Water Line	6	Valve (Blue)	S304	#289482
	7	Socket	S304	#147408
	8	Tube Fitting (Elbow)		#130693
	9	Tube	Nylon	#18582
	10	Tube Fitting (Elbow)		#130693
	11	Liquid Coupler (Socket)	Polyacetal	#157467
	12	Liquid Coupler (Plug)	S303	#216627

Materials S303/S304/S316's "S" means stainless steel in this manual.

Note: Parts No.5 and No.12 are provided in the AKIMist humidifier, not in the kit.

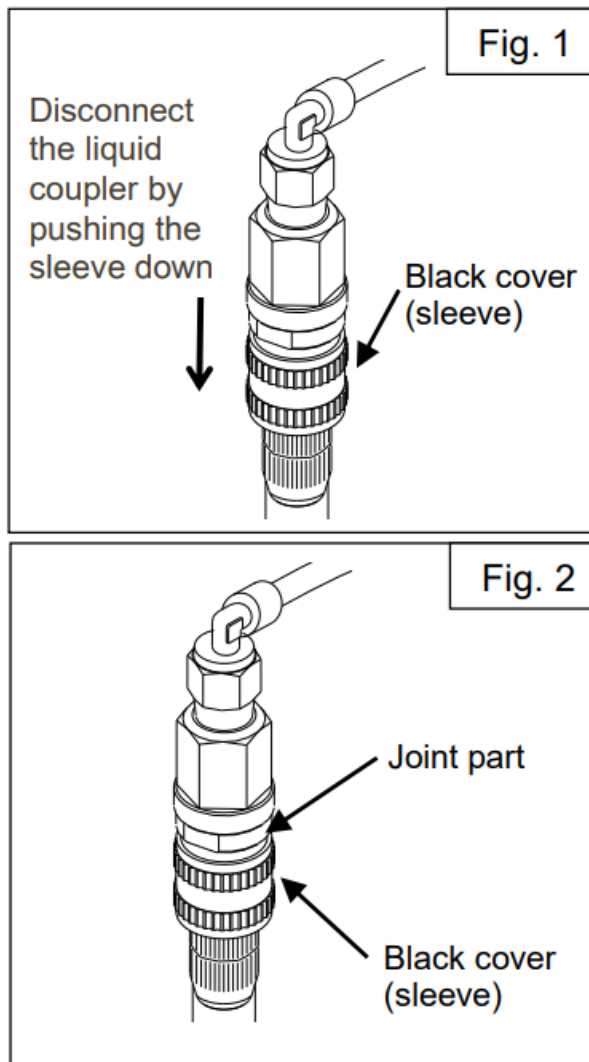
How to Install

The valves of this kit are Rc 1/4" (1/4 female) threaded. Please prepare R 1/4 threaded joints on the pipe side.

**Caution**

- Connect the air pipe and water pipe correctly.
- Be careful not to drop anything during installation at high places.
- For inquiry/order, use the specific part name and code number on the previous page.

The part numbers mentioned in the instructions below correspond to the parts listed on the previous page.



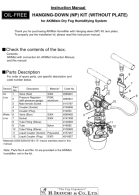
1. Disconnect air couplers (socket #4 from plug #5) and liquid couplers (socket #11 from plug #12). To disconnect the liquid couplers, push the black cover (sleeve) of the socket (#11) down towards the plug (#12) as shown in Fig. 1.
2. Connect air and water tubes to valves (#1 and #6) respectively. Rc 1/4" threaded connection for both air and water. (Recommended torque: 15 N-m)
3. Connect air and water couplers respectively. Insert each plug into each socket until it clicks. For liquid couplers, push the coupler into the black cover part until it clicks into place. The joint part will be hidden under the black cover (see Fig. 2).
4. Open valves (#1 and #6) and set the air pressure with pressure regulator (#2).

For installation and operation of AKIMist, refer to the enclosed Instruction Manual for AKIMist Dry Fog Humidifier.

CONTACT

- H. IKEUCHI & CO., LTD.
- Daiichi Kyogyo Bldg., 1-15-15, Awaza, Nishi-ku, Osaka 550-0011 JAPAN Fax: +81-6-6538-4022
- Email: overseas@kirinoikeuchi.co.jp
- <https://www.kirinoikeuchi.co.jp/eng/>

Documents / Resources



[H IKEUCHI Dry Fog Humidifying](#) [pdf] Owner's Manual

Dry Fog Humidifying, Dry, Fog Humidifying, Humidifying

References

-  [Spray Nozzle Manufacturer, "The Fog Engineers", H. IKEUCHI & Co., Ltd.](#)
- [User Manual](#)

[Manuals+](#), [Privacy Policy](#)

This website is an independent publication and is neither affiliated with nor endorsed by any of the trademark owners. The "Bluetooth®" word mark and logos are registered trademarks owned by Bluetooth SIG, Inc. The "Wi-Fi®" word mark and logos are registered trademarks owned by the Wi-Fi Alliance. Any use of these marks on this website does not imply any affiliation with or endorsement.