



GW F RCM-H200 Split Radio Module User Manual

[Home](#) » [GW F](#) » GW F RCM-H200 Split Radio Module User Manual 

Contents

- 1 GW F RCM-H200 Split Radio Module
- 2 User manual
 - 2.1 For use in the USA (FCC):
 - 2.2 For use in Canada (IC):
- 3 Contact Us
- 4 Documents / Resources
 - 4.1 References
- 5 Related Posts

GW F

GWF RCM-H200 Split Radio Module

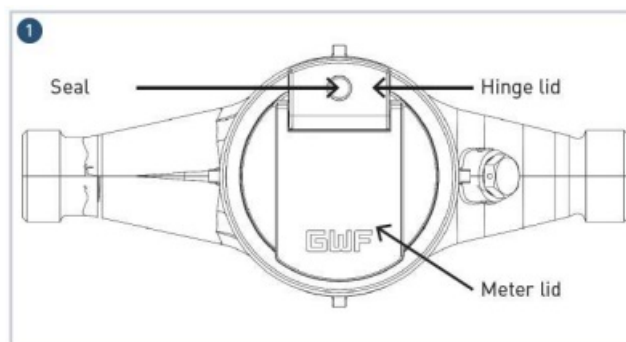


User manual

GWFcoder® MP – RCM®-H200 (split radio module)

Installation for all meters types with GWFcoder® MP register with ECO interface

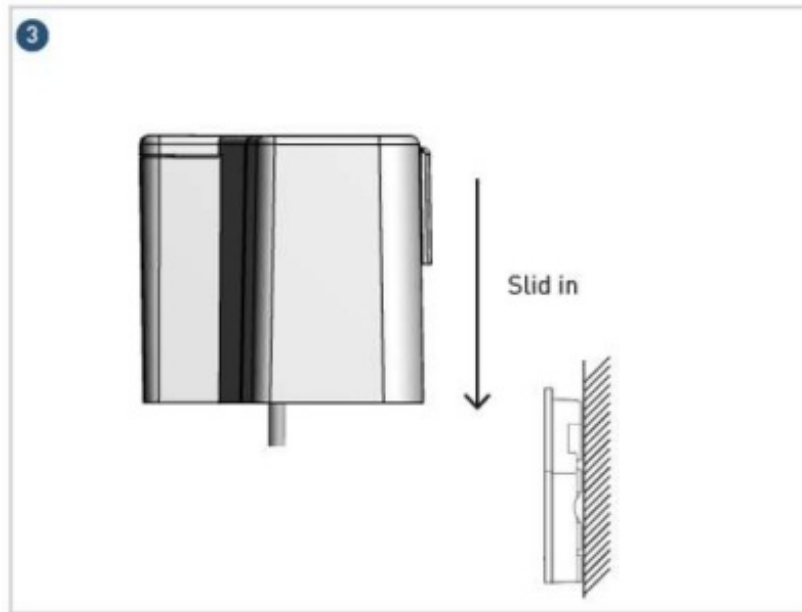
1. If you have ordered a GWFcoder® MP meter with a cable or the IP68 (flood-proof) version, the cable is pre-assembled. In this case, please continue with point 8.



2. With a screwdriver for recessed-head screws (size 0) stab the seal in the hinged lid (Fig. 1) and loosen the screw below the seal.



3. Remove the hinge lid.



4. Connect the wires of the radio module (red, green, black) to the screw binders (Fig. 2). The polarity of the connecting wires (red and black) makes no difference. Pay particular attention to the connection of the green-stranded cable. The green-stranded cable must be attached to the middle position using the screw binders supplied separately with the installation kit.
5. Insert the cable into the left strain relief part.
6. Install the meter lid and hinge lid again with a screw. Caution: Do not pinch the cable.
7. Insert seal.
8. We recommend the use of Scotchlok connectors when installing an RCM®-H200 radio module to a GWFcoder® MP meter with a connection cable that can be extended to 20 m. A 3 x 0,25 mm² cable must be used for the cable extension (only stranded cable, not wire).
9. Installation methods RCM®-H200 radio module.
 - a) Wall installation Mark the position for the two holes and attach the wall bracket using the supplied wall plugs and screws. Insert the radio module until it engages on the mounted wall bracket (Fig. 3).
 - b) Pipe installation Use cable ties to install the wall bracket at the desired position. Insert the radio module until it engages on the mounted wall bracket (Fig. 3).
10. Carry out a test read-out.

Note:

To achieve the best radio range it's necessary to install the radio module vertically (see fig. 3)

For use in the USA (FCC):

- Changes or modifications not expressly approved by the manufacturer could void the user's authority to operate the equipment.
- This device complies with Part 15 of the FCC rules. Operation is subject to the following two conditions: (1) This device may not cause harmful interference, and (2) this device must accept any interference received, including interference that may cause undesired operation.
- This device must be installed to provide at least 20 cm separation from the human body at all times.
- This equipment has been tested and found to comply with the limits for a Class B digital device, pursuant to Part 15 of the FCC Rules. These limits are designed to provide reasonable protection against harmful interference in a residential installation. This equipment generates uses and can radiate radio frequency

energy and, if not installed and used in accordance with the instructions, may cause harmful interference to radio communications. However, there is no guarantee that interference will not occur in a particular installation. If this equipment does cause harmful interference to radio or television reception, which can be determined by turning the equipment off and on, the user is encouraged to try to correct the interference by one of the following measures: Reorient or relocate the receiving antenna / Increase the separation between the equipment and receiver / Connect the equipment into an outlet on a circuit different from that to which the receiver is connected / Consult the dealer or an experienced radio/TV technician for help

For use in Canada (IC):

- This device complies with Industry Canada licence-exempt RSS standard(s). Operation is subject to the following two conditions: (1) This device may not interfere, and (2) this device must accept any interference, including interference that may cause undesired operation of the device.
- This device must be installed to provide at least 20 cm separation from the human body at all times.
- Le présent appareil est conforme aux CNR d'Industrie Canada applicables aux appareils radio exempts de licence. L'exploitation est autorisée aux deux conditions suivantes : (1) l'appareil ne doit pas produire de brouillage, et (2) l'utilisateur de l'appareil doit accepter tout brouillage radioélectrique subi, même si le brouillage est susceptible d'en compromettre le fonctionnement.
- Cet appareil doit être installé pour fournir au moins 20 cm de séparation du corps humain en tout temps.

Contact Us

GWF MessSysteme AG Obergrundstrasse 119 6005 Lucerne, Switzerland

T +41 41 319 50 50

F +41 41 310 60 87

info@gwf.ch,


www.gwf.ch

Technical support:

T +41 41 319 52 00,

support@gwf.ch

Documents / Resources

	<p>GWF RCM-H200 Split Radio Module [pdf] User Manual RCMH200, 2A4F7-RCMH200, 2A4F7RCMH200, RCM-H200 Split Radio Module, RCM-H200, Split Radio Module, Radio Module, Module</p>
---	--

References

- [GWF Startseite - GWF](#)