



GVM-LED1200 Bi-Color LED Light Panel User Manual

[Home](#) » [GVM](#) » GVM-LED1200 Bi-Color LED Light Panel User Manual 

Contents

- 1 GVM-LED1200 Bi-Color LED Light Panel
- 2 PRODUCT INTRODUCTION
- 3 PRODUCT PARAMETER
- 4 PRODUCT STRUCTURE ANALYSIS
- 5 INSTALLATION METHOD
- 6 APP CONTROL AND APP ON-LINE CONTROL
- 7 PRECAUTIONS
- 8 SIMPIE FAULTSAND TROUBLESHOOTING
- 9 DISCLAIMERS
- 10 USE AND PRESERVATION
- 11 PACKING LIST
- 12 Documents / Resources
 - 12.1 References
- 13 Related Posts

GVM

GVM-LED1200 Bi-Color LED Light Panel



- Web: www.gvmled.com
- B&H Email: bh@gvmled.com
- GVM Email: support@gvmled.com
- Amazon Email: amazonsupport@gvmled.com
- Warehouse Add: 4301 N Delaware ave, unit D. PHILADELPHIA, PA19137, USA

PRODUCT INTRODUCTION

Welcome to “GVM-LED1200”. This product is specially designed for senior photography enthusiasts. The product is suitable for live / outdoor / studio photography, and also for YouTube video shooting. The main features of the product are:

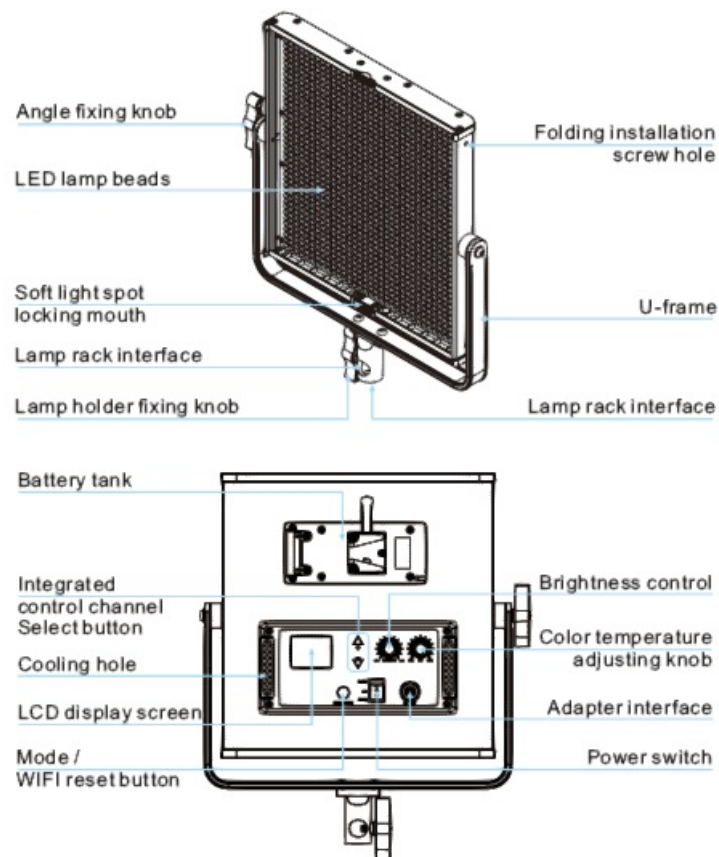
1. Dual color temperature feature with steeples adjustment, color range 3200K~5600K, with 1216 lamp bead, helping to restore and enrich the color of the object, and providing you with natural and vivid shooting effect.
2. APP intelligent control system, which can be controlled by your smart mobile device.
3. With LCD screen display and stable system, supporting 360 ° rotation, it can effectively control the light. It is also equipped with the standard cover, which can avoid redundant light and make the light more concentrated. Custom control fill light, allowing you to easily shoot the desired results. We believe that once using our product correctly, you can make huge progress when shooting. Before using the product, you are strongly recommended to read the instructions below carefully.

PRODUCT PARAMETER

- Brand : GVM

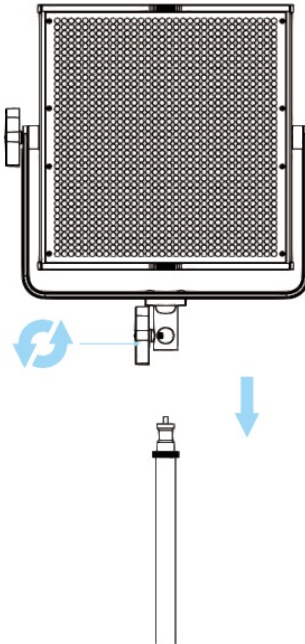
- Product Name : Photography Light
- Product model : GVM-LED1200
- Product Type : Photography Fill Light
- Lamp beads quantity : 1216
- Product Weight : 2.15KG
- Product Size (mm) : 310*340*55
- Cooling : Natural heat dissipation
- Product material : Aluminum alloy
- Commodity origin : China. Huizhou
- Features / Features : APP, Joint control, High-definition lamp beads Color rendering index : ≥ 97
- Color temperature : 3200K~5600K
- Lumen : 28000lux/0.5m; 8500lux/1m
- Light adjustment method : Steeples regulation
- Power : 65W
- Voltage : AC:100-240V
- Power supply mode : The DC input & The battery
- Power supply : Sony V-button battery (Need to buy separately) Power specification : DC15V/5A

PRODUCT STRUCTURE ANALYSIS

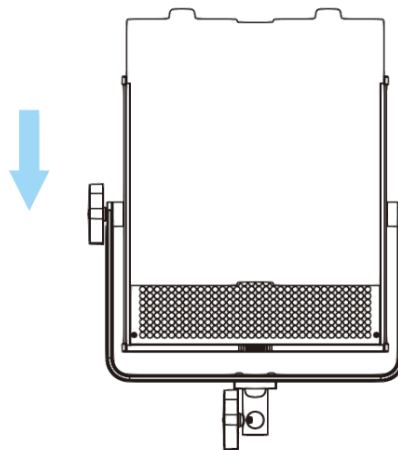


INSTALLATION METHOD

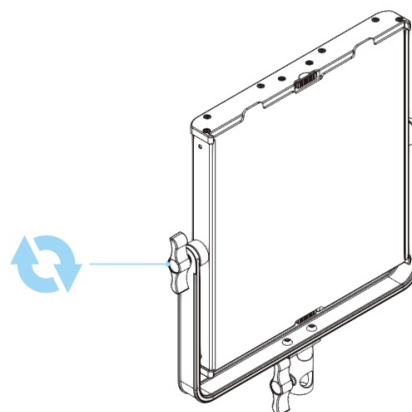
1. The lamp can be installed and fixed on the bracket by rotating the knob clockwise, and unloaded by rotating in the counterclockwise direction.



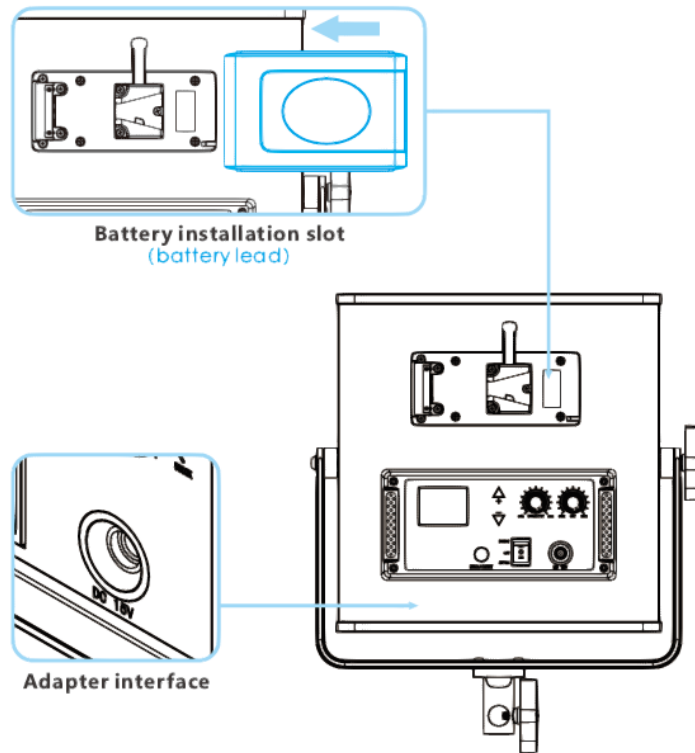
2. Insert the Subdued light board from the top of the light panel.



3. Loosen the adjustment knobs on both sides of the U-bracket, adjust the angle of the panel you need, and then tighten the adjustment knobs on both sides of the U-bracket.

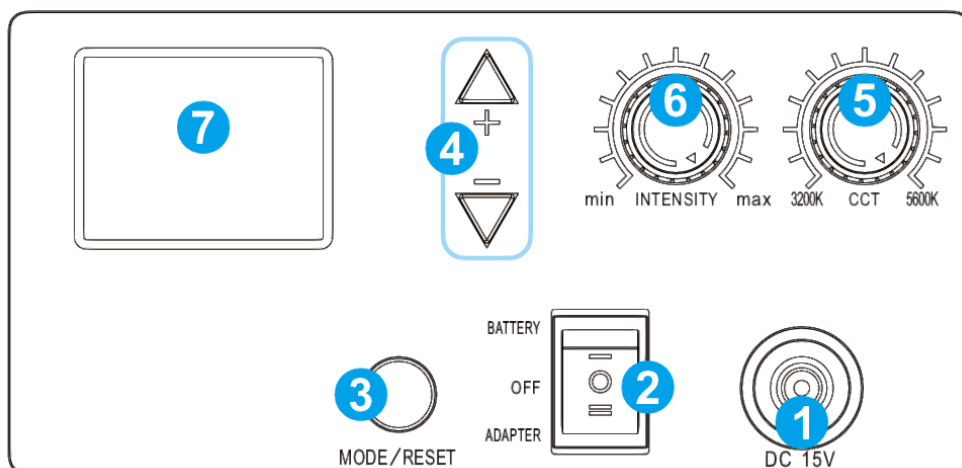
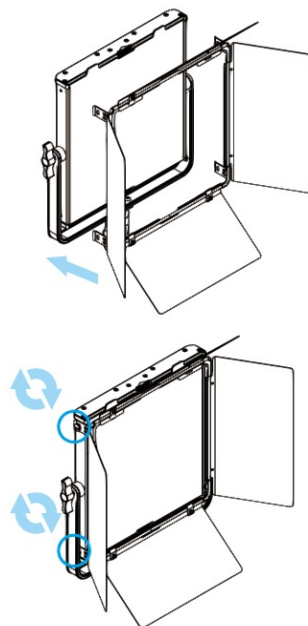


4. There are two power supply modes to choose from:
 1. Connect the power cord and adapter for power.
 2. Purchase a suitable lithium battery and use battery power.



5. Light control folding can control the Angle of light.

Align the front mounting holes with the screw holes of the hinges and lock the latches with screws.



1. DC15V power input interface
2. Power switch
3. Mode button / WIFI reset button: Modes include host mode and slave mode; WIFI username and password reset button
4. Channel addition and subtraction key: Adjust channel 0~11
5. Color temperature adjustment button: Adjust the color 3200K~5600K
6. Brightness adjustment button: Adjust
7. the brightness 10%~99%
8. LCD screen: Display brightness, Color temperature, Mode, Channel value and other data

FUNCTION INSTRUCTION & INSTRUCTION FOR USE

1. **Mode selection**

There are two kinds of more which are host mode and slave mode, switching through mode button (automatically as host mode when switch on the machine). In host mode, it is able adjust lightness, color temperature and channel value, and it is also able to connect APP, and control the parameters through APP. While in the slave mode, it is only able to set channel value, rather than lightness and color temperature.

2. **Channel adjustment**

Set channel value using channel addition and subtraction key, ranging from 0 to 11.

3. **Brightness adjustment**

In the host mode, adjust lightness through the knob or APP, ranging from 10% to 99%.

4. **Color temperature adjustment**

In the host mode, adjust color temperature through the knob or APP, ranging from 3200K to 5600K.

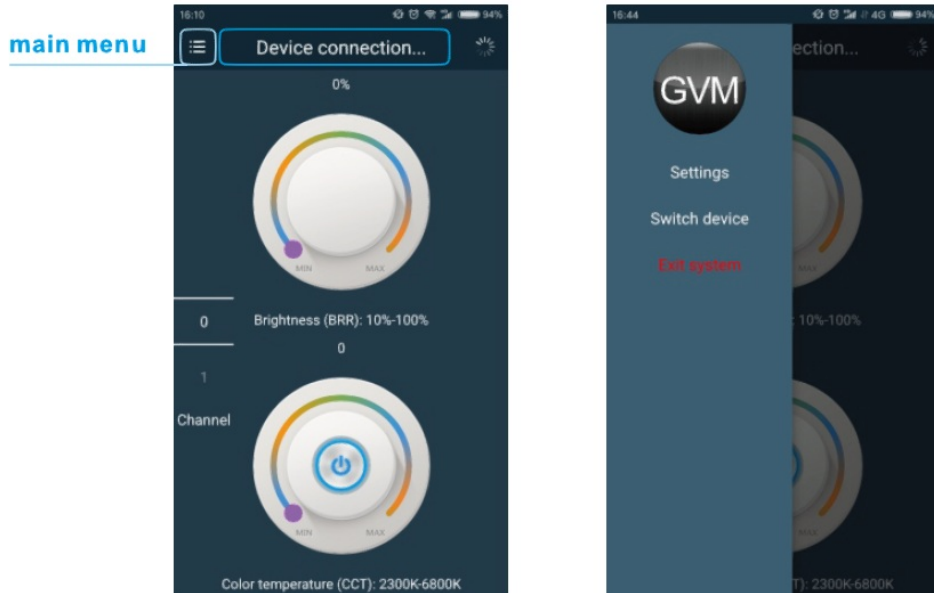
5. **On-line control between photography lights**

Prepare two or more photography lights, set on as host mode and the other slave mode, and set a same channel value, in this way, it is able to control the lightness and color temperature of slave machine through adjusting the knob of the host machine. Moreover, it is also able to connect the host machine and APP, and then use the APP the control the slave machines.

APP CONTROL AND APP ON-LINE CONTROL

Scan the QR code on the back of the manual to download the APP

Set host mode for the photography light (automatically as host mode when switch on the machine), open “GVM Easily” APP on the mobile phone (meanwhile turn on WIFI on the phone), in the main menu in the APP—switch the devices—select “single and double photography light”, then in the main menu in APP—set—select “switch WIFI”, and connect photography light (WIFI initial username: GVM_LED, password: gvm_ admin), once it shows “ successfully connected GVM_LED”, return back to the main interface, after it shows “double color temperature LED light (successfully connected)” in the main interface, it is allowed to control the lightness, color temperature, channel value or switch on and off through the control key in APP, and also the slave machines.



WIFI username and password resetting

It is able to reset the WIFI username and password if long press the WIFI reset button for over 5 seconds. After resetting, the username and the password will return to the initial (WIFI username: GVM_LED, WIFI password: gvm_ admin).

PRECAUTIONS

- Please use the matching power adapter or lithium battery with the same specification to power the product. Do not use power adapter with different output voltage parameters.
- The product is not waterproof, please use it in rainproof environment.
- The product is not anti-corrosion, therefore do not let the product touch any corrosive liquid. When using the product, make sure the product is put firmly and prevent from falling and damage.
- If the product will not be used for a long time, please switch off the power to reduce energy loss.

SIMPLE FAULTS AND TROUBLESHOOTING

Phenomenon

- The switch indicator does not light up
- The knob of lightness and color temperature are out of control
- The screen and the light are off when the product is in power-on

Check the product

1. Check the matching power adapter indicator light up or not.
2. When using lithium battery, make sure there's no "low power" protection.
Check if the mode were set as slave mode, lightness and color temperature of the products cannot be controlled in slave mode
Check if the product is "switch off" because of the APP of mobile phone.

Troubleshooting

- Make sure the adapter is well contacted with the power plug
- Charge the battery before using it
- P r e s s t h e “ m o d e ” button for once, switch the mode from slave mode to host mode
- Press the “ON/OFF” button once again

DISCLAIMERS

1. Before using this product, please read the instructions carefully and make sure use the product correctly. If you don't obey the instructions and warnings, you maybe cause harm to yourself and the people around, or even damage the product and other things around.
2. Once you use this product, you are deemed to have read the disclaimer and warning carefully, understand and acknowledge all the terms and contents of this statement, and promise to take full responsibility for the use of this product and possible consequences.

USE AND PRESERVATION


Do not put the product in highly humid, strong electromagnetic field, direct sunlight, high temperature environment. If not use the product for a long time, disconnect the power and take out the battery.

- **Clean** Before clean, disconnect the power plug. And use wet cloth rather than any detergent or soluble liquid, avoiding of damaging the surface layer.
- **Power** Make sure the power is in the demanded range, not too high or too low. Correctly load the battery, in order not the damage to machine.
- **Repairing** If there is fault or performance degradation, do not unpack the shell by yourself, avoiding damage the machine and lose the right of maintenance. When there is fault, do not hesitate to contact us, and we will do our best to deal the problem.
- **Accessories** Please use the accessories provided by manufacturer and approved ones, in order to maximize the performance.
- **Guarantee** Do not modify the product, or you will lose the right of maintenance.

PACKING LIST

Name	Quantity	Notes
Main Machine	1	
Power Cord	1	
Adapter	1	
Softboard	1	
Carrying Case	1	
User Manual	1	

Documents / Resources

	GVM GVM-LED1200 Bi-Color LED Light Panel [pdf] User Manual GVM-LED1200, Bi-Color LED Light Panel, GVM-LED1200 Bi-Color LED Light Panel, LED Light Panel, Light Panel, Panel
---	--

References

-  [GVM Lights Official Store - Great Video Maker - Video Lights](#)