



Contents [[hide](#)]

- [1 GuliKit ES Controller](#)
- [2 Specifications](#)
- [3 Product Usage Instructions](#)
- [4 OVERVIEW](#)
- [5 Joysticks Calibration](#)
- [6 Pairing Methods with PC](#)
- [7 Wireless Pairing with Android Devices](#)
- [8 Pairing Methods with Switch / Switch 2](#)
- [9 FOR MORE INFORMATION](#)
- [10 FAQ](#)
- [11 Documents / Resources](#)
 - [11.1 References](#)



GuliKit ES Controller



Specifications

- **Model:** ES
- **USB-C Port:** For charging & wired connection
- **Indicator Light:**
 - **Orange** – Charging
 - **Green** – Fully charged
 - **Flashing light** – Pairing mode
 - **Solid White** – No custom settings configured
 - **Solid Blue** – Custom settings configured
- **Home Button:** Press to power on, Press and hold to power off
- **Pairing Button:** Press and hold to enter pairing mode, Slide switch to change controller mode
- **Power-Off Button:** Controller will automatically power off after 15 minutes of inactivity

Product Usage Instructions

Charging & Connection

- Use the USB-C port for both charging and wired connection. The indicator light will

show different colours to indicate various states, such as charging, fully charged, pairing mode, and custom settings configured.

Power On/Off

- To power on the controller, press the Home button. To power off, press and hold the Home button.

Pairing

- To enter pairing mode, press and hold the Pairing button. Slide the switch to change controller mode. Follow specific pairing methods based on the device you are connecting to (PC, Android, Switch/Switch 2).

Joysticks Calibration

- To calibrate joysticks, press and hold the L, R, Dpad Left, and B buttons simultaneously for 6 seconds while the controller is powered on. Rotate both joysticks in full circles 2 to 3 times. The controller will vibrate once to indicate successful calibration.

OVERVIEW

USB-C Port:
For charging & wired connection.

Indicator Light:
Orange - Charging
Green - Fully charged
Flashing light - Pairing mode
Solid White - No custom settings configured
Solid Blue - Custom settings configured

Home Button:
Press to power on
Press and hold to power off

Setting Button

Pairing Button:
Press and hold to enter pairing mode

Slide switch to change controller mode

Power-Off Button:

The controller will automatically power off after 15 minutes of inactivity. When connected via USB or Auto-Continuous Fire (Turbo) is active, the controller will not power off.



CAUTION!

- This product contains small parts (such as buttons, joystick caps, and screws) that may pose a choking hazard if swallowed by children.

Joysticks Calibration

- While the controller is powered on, press and hold the “L,” “R,” “D-pad Left,” and “B” buttons simultaneously for 6 seconds to enter calibration mode.
- During calibration, rotate both the left and right joysticks in full circles 2 to 3 times.
- Once calibration is complete, the controller will vibrate once to indicate success and will automatically exit calibration mode.

Pairing Methods with PC

1. Bluetooth Pairing – 730Hz Polling Rate:

- **(Requires the computer to have Bluetooth functionality)**
- **a.** Switch the controller to PC mode. Then press and hold the pairing button for 2 seconds until the indicator light begins flashing rapidly, indicating that pairing mode has started.
- **b.** On your computer, open the Bluetooth settings, search for new devices, and select “GuliKit XW Controller” to pair.
- **c.** Once the interface displays “Connected”, the pairing is complete.

2. Wired Connection – 1000Hz Polling Rate:

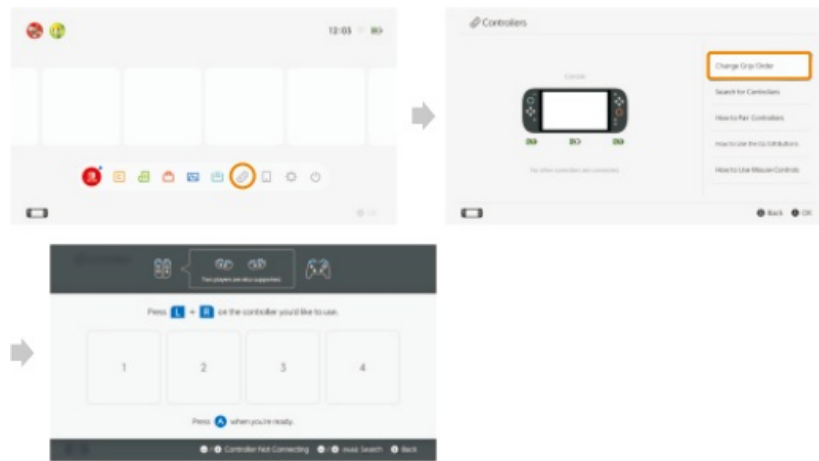
- Set the controller to PC mode. Connect one end of the USB-C to USB-A data cable to the controller, and insert the other end into a USB-A port on your computer.
- If you’re using a desktop computer, it is recommended to use one of the USB ports on the back of the computer case for a more stable connection.

Wireless Pairing with Android Devices

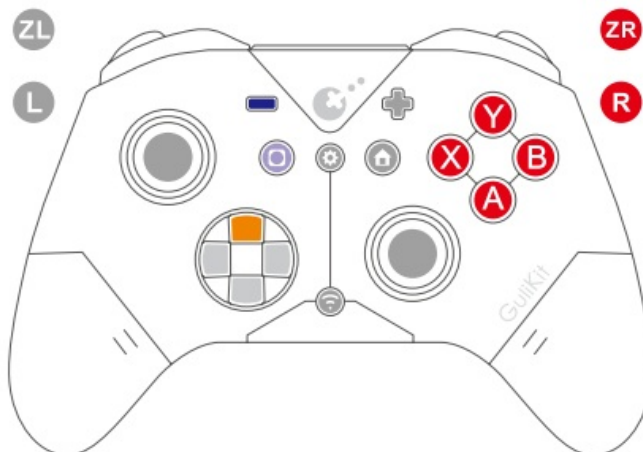
1. Set the controller to PC mode.
2. Press and hold the pairing button for 2 seconds until the indicator light starts blinking quickly, indicating that pairing mode has been activated.
3. On your phone, go to Bluetooth settings, search for new devices, and select “GuliKit XW Controller”.
4. The interface displays “Connected” to the new controller, indicating that the pairing is complete.

Pairing Methods with Switch / Switch 2

1. Set the controller to NS mode, turn it on, then press and hold the pairing button for 2 seconds. The indicator light will blink quickly, indicating that pairing has started.
2. When the Switch / Switch 2 is in the black screen (sleep) state, press the HOME button on the Joy-Con to wake it up. It will then enter the controller pairing interface, as shown below.



3. Once the interface shows that a new controller is connected, the pairing is complete.
- All customized settings mentioned below require holding the Setting button⚙️ while pressing the corresponding buttons.
 - When customised settings are configured, the indicator light will turn blue. When no customized settings are configured, the💡 indicator💡 light will remain white.
 - When the battery is low, the indicator💡 light will flash, and the vibration function will automatically turn off. Once the battery level is restored, vibration will turn back on automatically.



⚙️ + ⬅️ Clear All Settings (Reset)

- **Long vibration:** Indicates that the reset process is complete and the controller has been restored to its default settings.

⚙️ + 🕒 Joystick Dead Zone Setting

- **One vibration:** Dead zone enabled on joysticks.
- **Long vibration:** Dead zone disabled on joysticks (Default).



Continuous Fire (Turbo) Setting

- **One vibration:** Manual Turbo Mode – Continuous fire is activated while holding the button and stops when released.
- **Two vibrations:** Auto Turbo Mode – Press the button once to start continuous fire, and press it again to stop.
- **Long vibration:** Disables both manual and auto turbo modes. (Default)



Adjust Vibration Intensity

- **One vibration:** Weak vibration.
- **Two vibrations:** Standard vibration. (Default)
- **Three vibrations:** Strong vibration.
- **Long vibration:** Turn off vibration.

FOR MORE INFORMATION

For more questions & answers, you can visit the website and navigate to the “Support” section and look for the “Frequently Asked Questions” (FAQ) related to the controller.



www.gulikit.com

FAQ

How do I pair the controller with a PC using Bluetooth?

Switch the controller to PC mode, then press and hold the pairing button to enter pairing mode. On your computer, search for new devices in Bluetooth settings and select GuliKit XW Controller to pair.


How do I pair wirelessly with Android devices?

Set the controller to PC mode, then press and hold the pairing button until the indicator light blinks rapidly. On your phone, go to Bluetooth settings, search for new devices, and select GuliKit XW Controller.

How do I pair with a Switch/Switch 2?

Set the controller to NS mode, turn it on, then press and hold the pairing button. When the Switch is in sleep mode, press the HOME button on the Joy-Con to wake it up for pairing.

Documents / Resources

	<p>GuliKit ES Controller [pdf] User Manual</p> <p>ES Controller, ES, Controller</p>
--	---

References

- [User Manual](#)

🔍 controller, ES, ES Controller,

📁 GuliKit GuliKit

Leave a comment

Your email address will not be published. Required fields are marked *

Comment *

Name

Email

Website

☐ Save my name, email, and website in this browser for the next time I comment.

Post Comment

Search:

e.g. whirlpool wrf535swhz

Search

[Manuals+](#) | [Upload](#) | [Deep Search](#) | [Privacy Policy](#) | [@manuals.plus](#) | [YouTube](#)

This website is an independent publication and is neither affiliated with nor endorsed by any of the trademark owners. The "Bluetooth®" word mark and logos are registered trademarks owned by Bluetooth SIG, Inc. The "Wi-Fi®" word mark and logos are registered trademarks owned by the Wi-Fi Alliance. Any use of these marks on this website does not imply any affiliation with or endorsement.