



# GULEEK A1984 6.1 Inch 3D Touch Digitizer LCD Display Assembly Installation Guide

[Home](#) » [GULEEK](#) » GULEEK A1984 6.1 Inch 3D Touch Digitizer LCD Display Assembly Installation Guide 



## Contents

- 1 A1984 6.1 Inch 3D Touch Digitizer LCD Display Assembly
- 2 Remove The Sim Card Tray
- 3 Remove The Pentagonal Screws
- 4 Heat Your iPhone
- 5 Apply A Suction Cup
- 6 Begin Prying The Screen Off
- 7 Open Your iPhone
- 8 Remove The Battery And Display Connector Cover
- 9 Connect the new screen cable to test the new screen for proper functionality before installation
- 10 Power off the phone after test over
- 11 Disconnect all connectors
- 12 Remove the speaker and sensor from the old screen
- 13 Remove the plastic protective film from the new screen
- 14 Install the speaker and sensors
- 15 Attach a new adhesive frame
- 16 Connect all cables
- 17 Switch on and test again
- 18 Install the metal plate
- 19 Reclose the display
- 20 Install back two bottom screws
- 21 Put back your SIM card
- 22 Documents / Resources
  - 22.1 References

## Installation Tips:

- Preparation Before Installation: If you have no prior experience in mobile phone repairs, before proceeding with the installation, please watch the installation video on the product details page 3-5 times to ensure you don't miss any installation details.

How to watch installation videos:

Method 1: Open the product details page on Amazon to watch the installation video.

Method 2: Visit the YouTube link below to watch it, or search "replace iPhone XR screen" on [YouTube.com](https://www.youtube.com).

[https://www.youtube.com/watch?v=v3RYxC3\\_-Vo](https://www.youtube.com/watch?v=v3RYxC3_-Vo)

Method 3: Scan the following QR code.



[https://www.youtube.com/watch?v=v3RYxC3\\_-Vo](https://www.youtube.com/watch?v=v3RYxC3_-Vo)

- Safety first: Before starting any installation process, always make sure to disconnect the battery or power source to avoid any electrical mishaps or damage. This step is crucial for your personal safety and to prevent any potential damage to the device.
- Organize and keep track: When disassembling your device, it's important to keep all the screws, parts, and accessories in a safe place. Use a magnetic mat or small containers to organize and label the different components. This will help you avoid losing any crucial parts and make the reassembly process much smoother.
- Mind the sharp tools: When replacing a cracked screen or using any sharp repair tools, exercise caution to avoid injury. Wear protective gloves and eyewear if necessary. Take your time and be gentle when handling the tools to prevent accidental cuts or damage to yourself or the device.
- Avoid touching the cameras: During the installation process, it's important to avoid touching the cameras located on the main board. Touching or damaging the cameras can disrupt their functionality, especially in devices equipped with Face ID technology. Handle the device carefully and focus on the specific task at hand without interfering with any other components.
- Remember, if you're uncertain about any step of the installation process, it's always a good idea to seek professional help or refer to manufacturer-provided guides.

## Remove The Sim Card Tray

- Start by ejecting your SIM card tray. Use a SIM card eject tool or a paperclip and insert it into the small hole.
- Make sure your SIM card is in the correct way round when re-inserting.



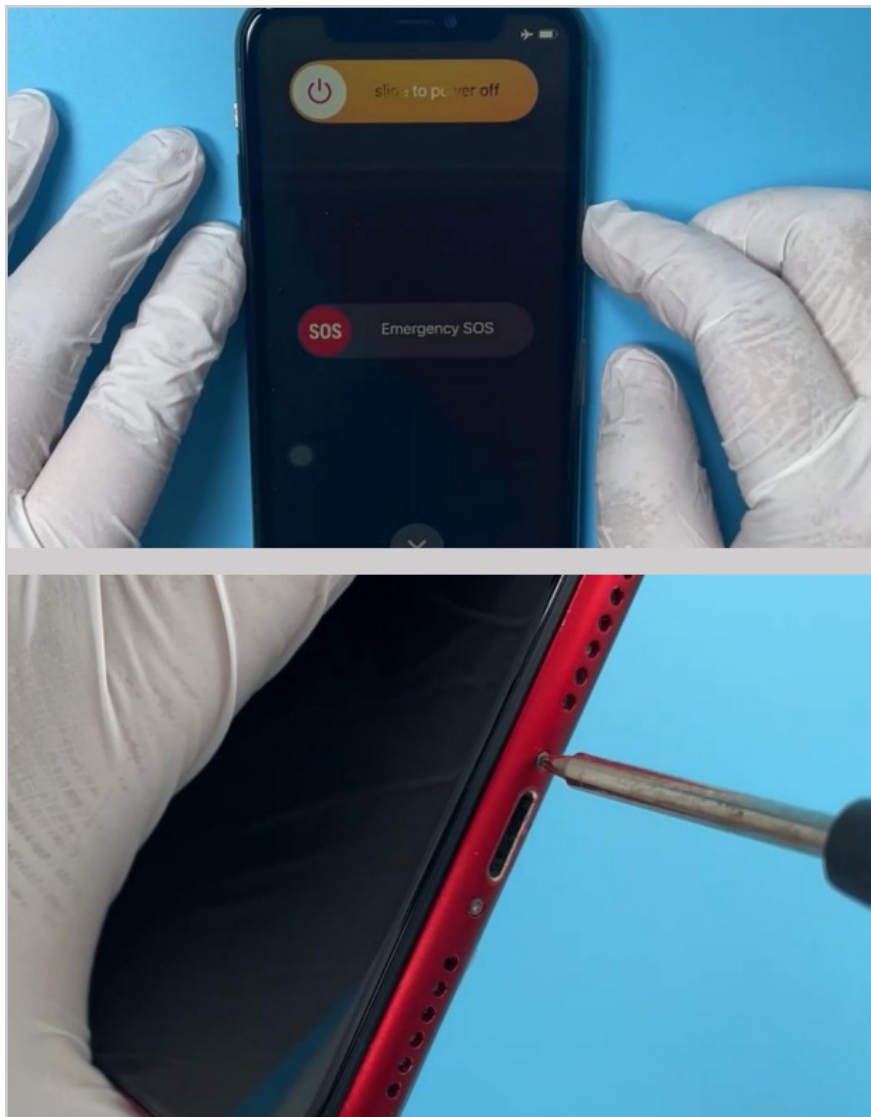
## Remove The Pentagonal Screws

–Turn your iPhone off.

–At the bottom of the iPhone, unscrew and remove the two 6.8mm pentagonal screws.

**NOTE:** Before starting this repair, discharge your iPhone battery below 25%. Accidentally puncturing a charged lithium-ion battery can cause it to catch fire and/or explode.

**NOTE:** When you open the iPhone's display it will compromise its waterproof seals. Make sure you have replacement seals ready before continuing with this guide, or take care when reassembling your phone to avoid liquid exposure.



## Heat Your iPhone

- We use a hair dryer to heat iPhone with hot air.
- Leave the phone to heat up for a maximum of 2-3 minutes.
- By heating the phone you will be softening the adhesive that is holding the LCD screen to the phone, and thus making it easier to open.



## Apply A Suction Cup

- Apply your suction cup to the bottom edge of your phone.
- Use The Suction Cup To Lift The Display

–Pull the suction cup away from the phone, this will create a gap between the front panel and rear case.

**NOTE:** Don't place it too far down though, avoid putting it at the very edge of the glass.

If you have a severely cracked screen, you may have trouble mounting the suction cup.

You can combat this by covering the screen with tape and mounting the suction cup to the tape.

**NOTE:** If you're struggling to create the gap, it might be due to the phone having cooled down. Heat the phone up and try again, the watertight adhesive holding the screen down is very strong so this may take time to slowly weaken the adhesive enough to create an opening.



## Begin Prying The Screen Off

–Use the triangular opening tool or prying tool to start prying open the bottom edge of the phone.

–Continue prying the phone along the left and right sides.

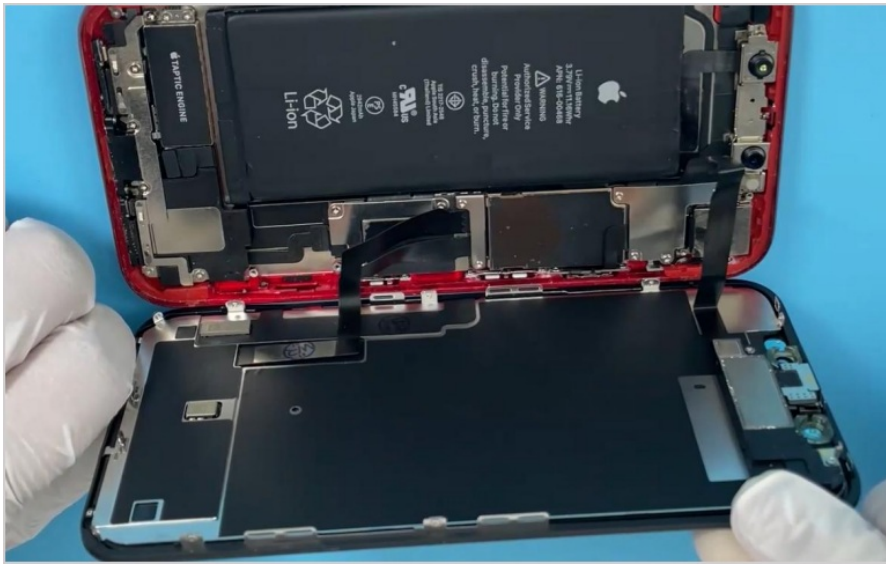
**NOTE:** Be careful not to insert the opening tool too deeply into the phone; a few millimetres should be sufficient. If the opening tool is inserted too deeply, it may damage the cable that connects to the screen.



## Open Your iPhone

–Remove the display from the rear case by gently pushing it upwards with the triangle opening tool. When the display is completely detached, you can lean it against a stable object so that it remains in a vertical position.

**NOTE:** Don't try to fully separate the display yet, Make sure you are opening the phone from the right side. The left side has a few fragile cables that connect the screen to the iPhone logic board.



## Remove The Battery And Display Connector Cover

–Unscrew the 7 blue screws (1.2mm Y-type) 1 yellow(1.5 mm phillips) securing the battery and display connector cover.

–Remove the metal plate.

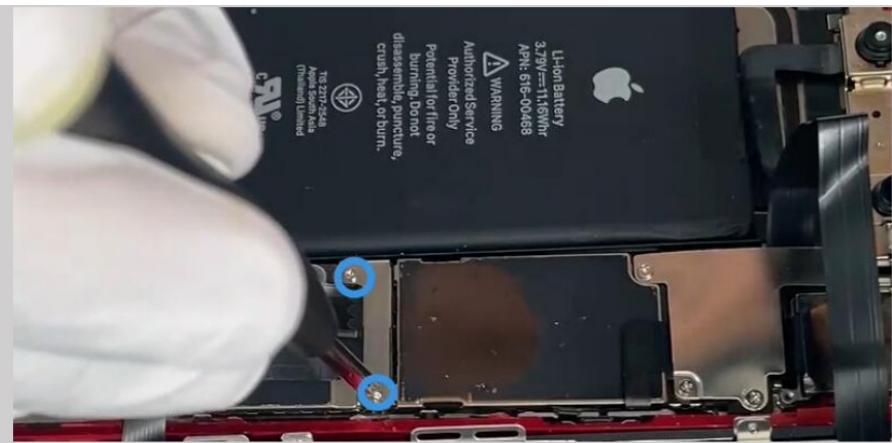
–Use a spatula or clean fingernail to gently pry the cable connector up from its socket on the logic board.

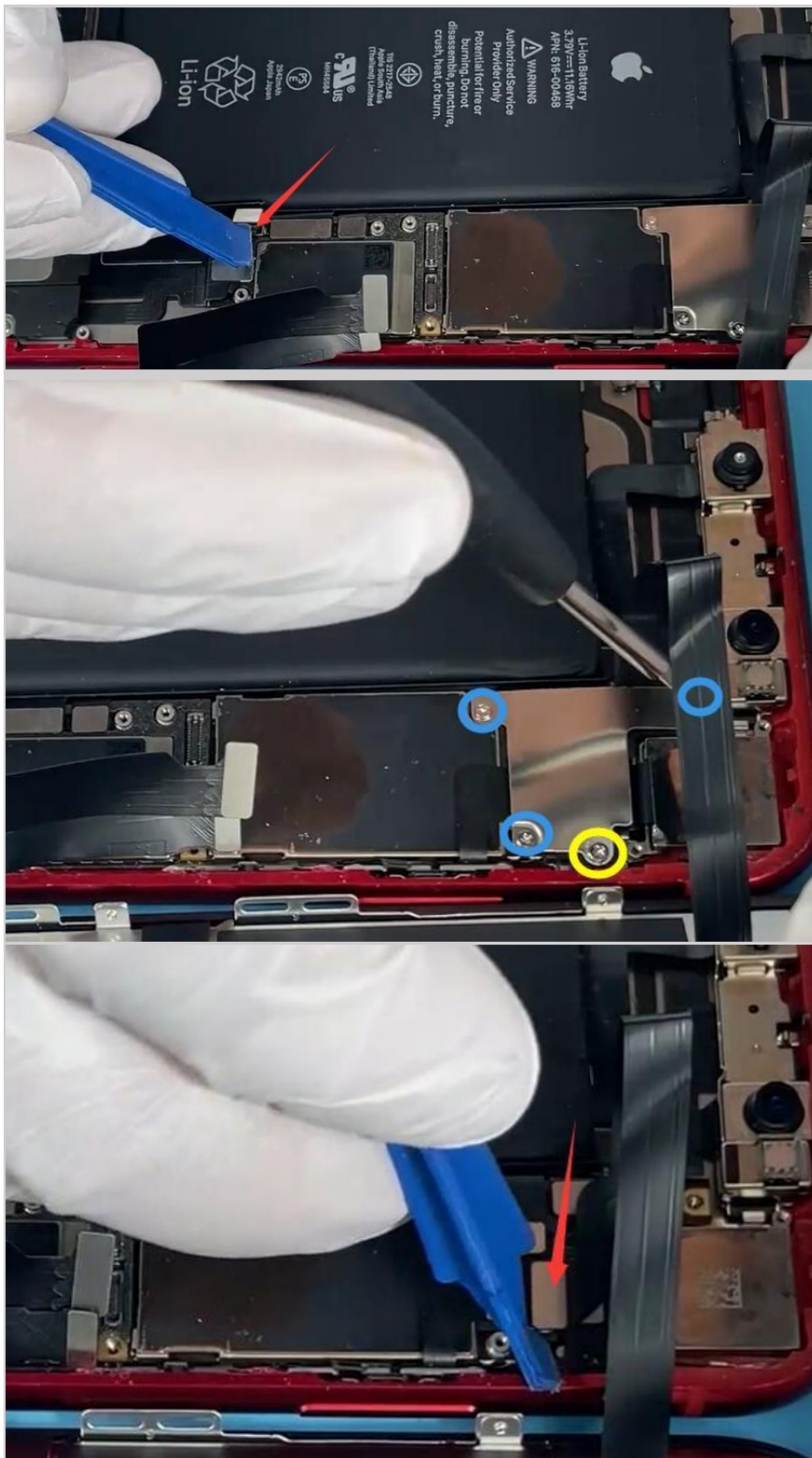
**NOTE:** Be gentle when disconnecting the cable. Do not use excessive force.

**NOTE:** Battery cables are the first to disconnect.

**NOTE:** Throughout the repair process, pay close attention to the position of each screw and make sure to return them to their original locations to avoid damaging the iPhone







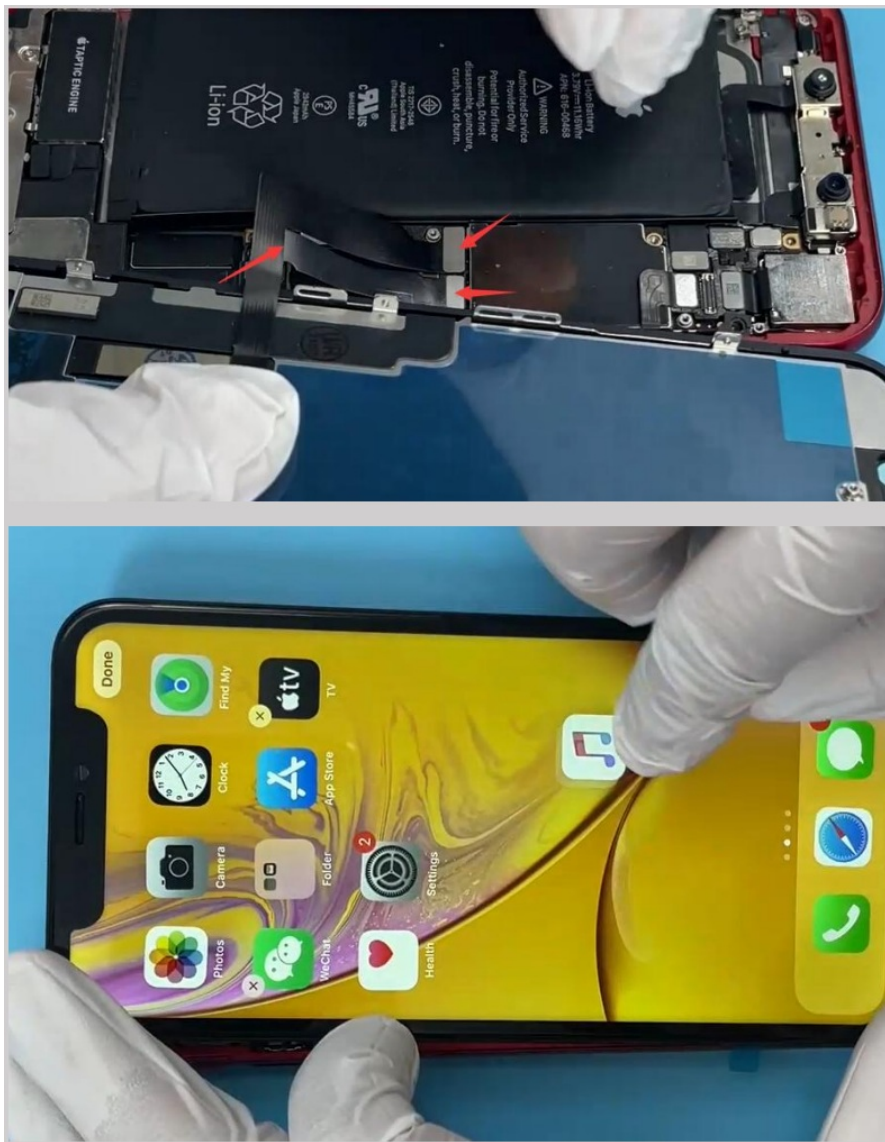
**Connect the new screen cable to test the new screen for proper functionality before installation**

–Connect both screen cables and the battery cable, gently close the screen, power on, and test if the new screen is functioning properly.

**NOTE:** When connecting the cables, avoid excessive force, as it may result in cable breakage or damage.

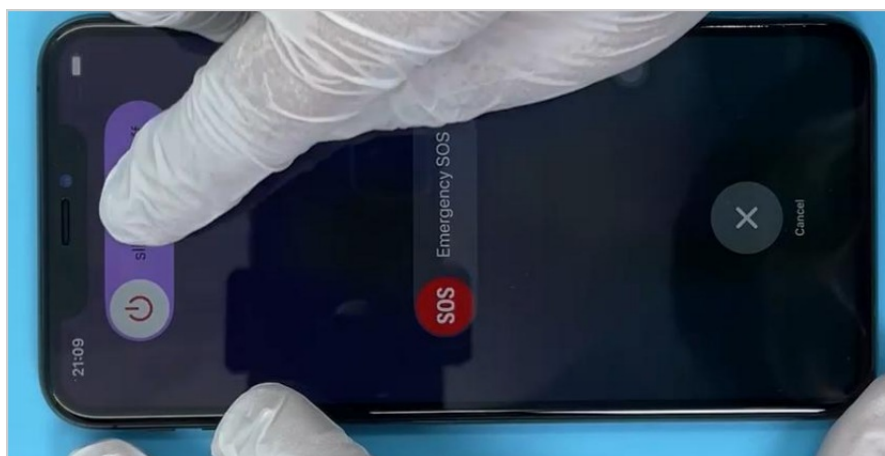
**NOTE:** Battery cables are connected last.





## Power off the phone after test over

–Don't forget to switch off your mobile phone when the test is over.



## Disconnect all connectors

–Gently open the screen and disconnect the battery from the screen connector.

**NOTE:** Battery cables are the first to disconnect.



## Remove the speaker and sensor from the old screen

—Unscrew the 1 red (1.6 mm Y-shape) 1 navy blue (1.2 mm Y-shape) 1 yellow (1.3 mm Y-shape) screw that secures the speaker/sensor assembly.

—Once the screws are unscrewed, flip the speaker assembly over so that it is away from the top edge of the display. Use tweezers to carefully flip the speaker.

**NOTE:** The speaker assembly will be connected by a thin ribbon cable, be sure to handle this carefully as this cable is fragile.

—Heat the display with a hair dryer for a maximum of 1-2 minutes.

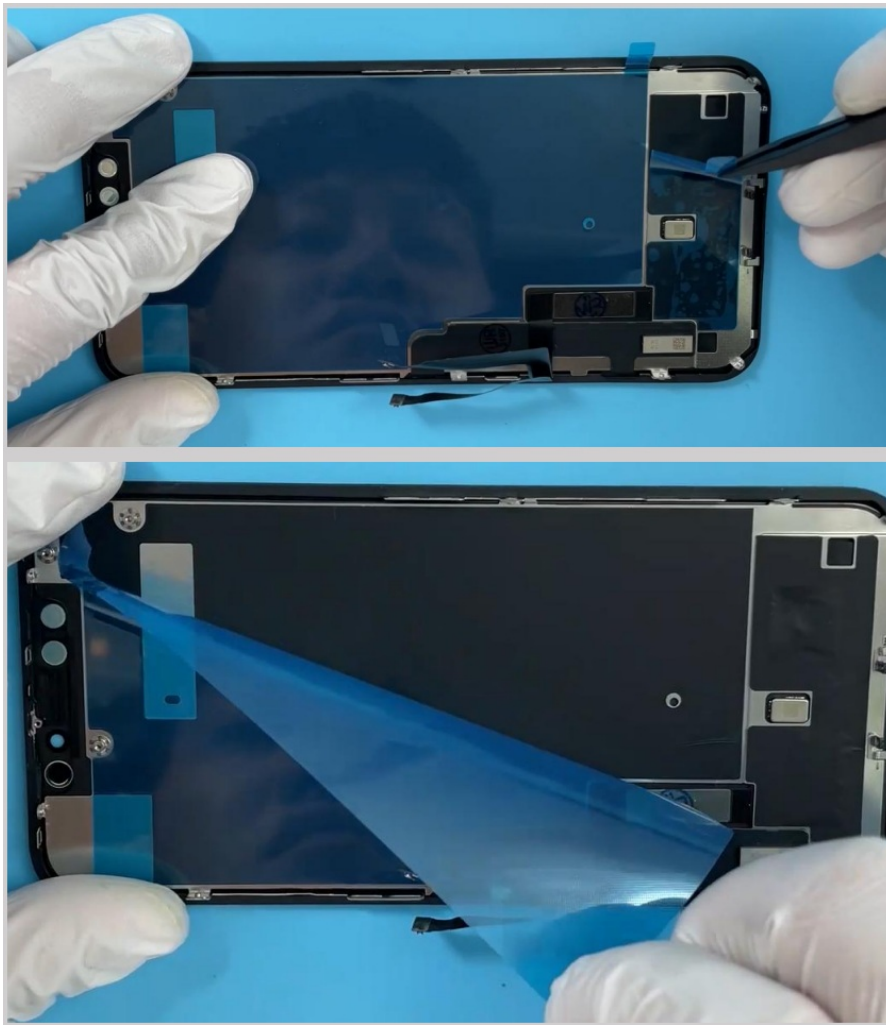
**NOTE:** This is to soften the adhesive holding the sensor in place.



### **Remove the plastic protective film from the new screen**

–Remove the plastic protective film from the new screen and prepare it for the next step.





### Install the speaker and sensors

- Connect the old speaker and sensor cables to the new display screen.
- Align the module and fold back the speaker.
- Press the sensor cables into the interior of the display screen.
- Push the sensors back into the guide rail.
- Screw in the screws.

**NOTE:** When pressing the sensor into the guide rail, please handle it with care, avoiding excessive pressure to prevent sensor damage. Also, make sure to pay attention to the screw locations during installation, ensuring they match the corresponding holes to avoid unnecessary issues.



### **Attach a new adhesive frame**

- Peel off the protective film of the adhesive
  - Align the adhesive with the top edge of the iPhone case and gently press it into place.
- Do the same on the other side of the adhesive.



–Press the adhesive firmly into the four corners with the stopper.

**NOTE:** If the adhesive is not positioned correctly, it cannot be repositioned. You will have to remove it and reapply new adhesive, so complete this step slowly.

Be careful not to press on any internal parts or the camera.



## Connect all cables

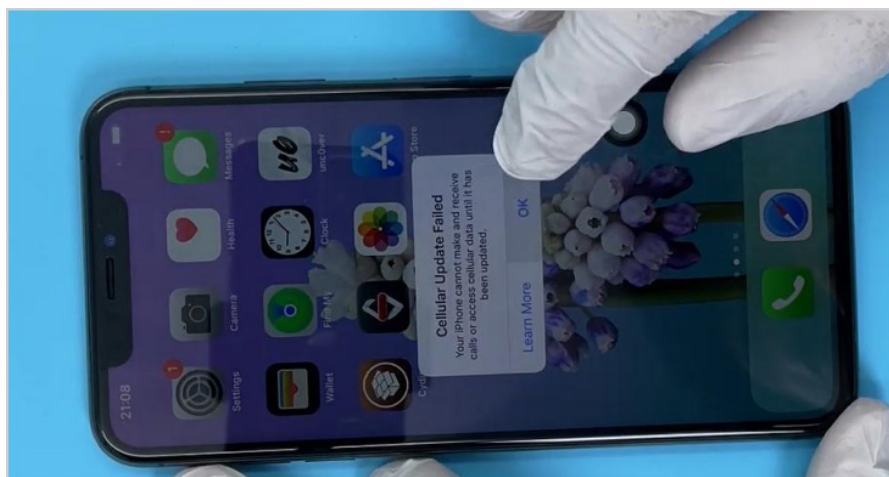
–Connect the screen cable, speaker cable and battery cable.

**NOTE:** Battery cables are connected last.



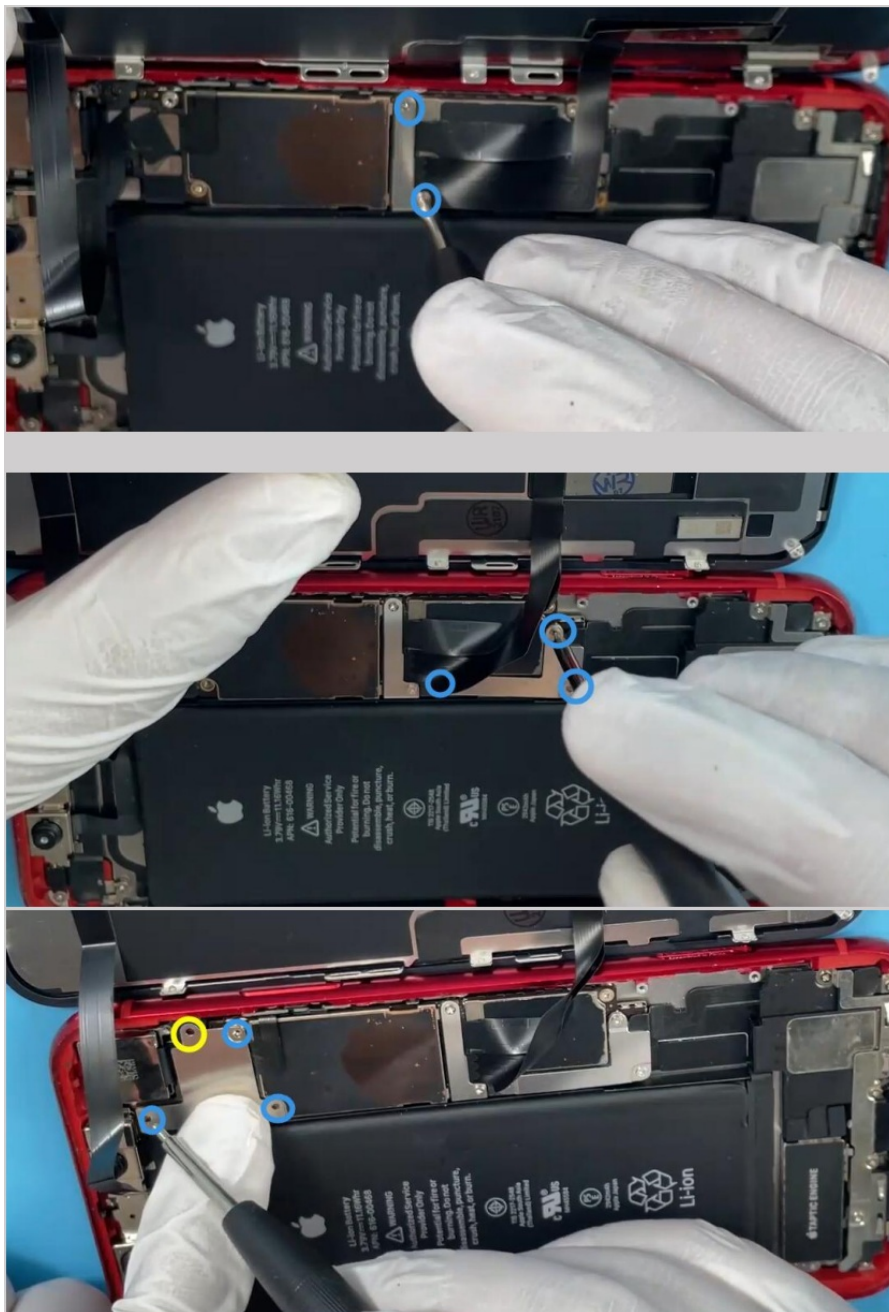
## Switch on and test again

–Switch on the power again and test the screen display and function normally



## Install the metal plate

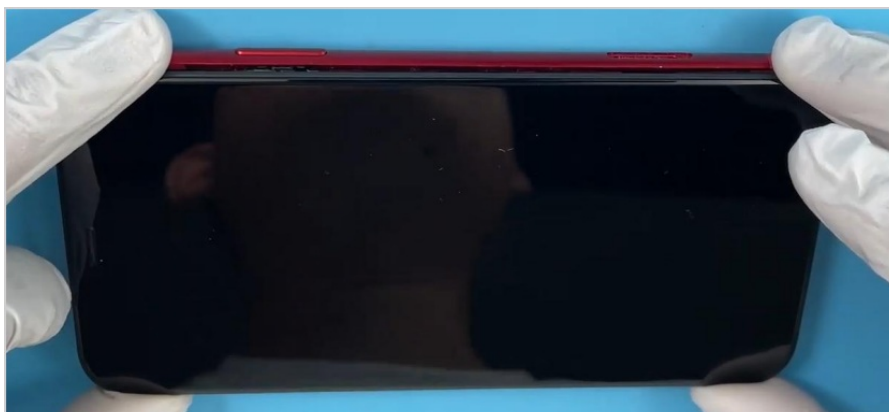
- If all is well, reinstall the metal plate.
- Remember to hook the larger metal plate before tightening it.



## Reclose the display

- Carefully align the top edge of the display with the top edge of the phone body.
- Slowly lower the bottom of the display back into place, pressing gently so that it snaps into place.

**NOTE:** Make sure no internal cables are sticking out before closing the display completely. If any internal cables are pinched while reassembling the LCD display, they may be damaged beyond repair.





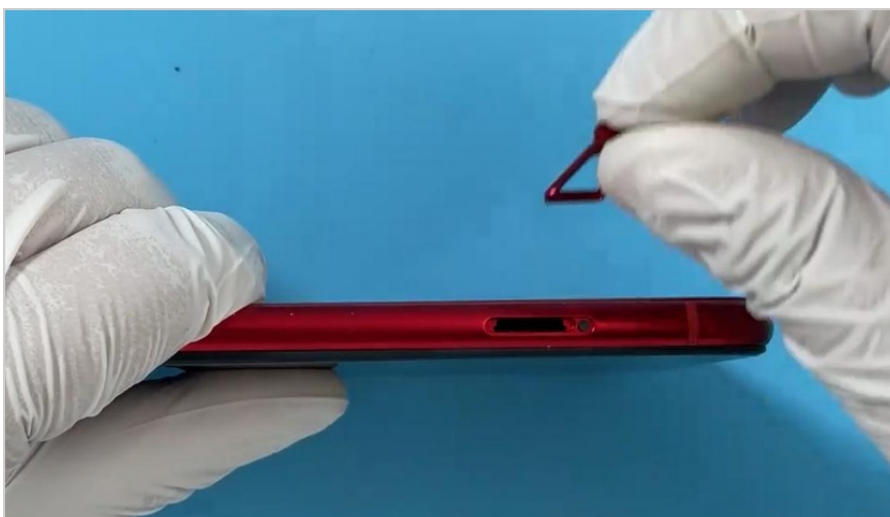


### **Install back two bottom screws**

–Reinstall the two pentagonal screws.



### **Put back your SIM card**



**Note:** Avoid applying pressure to the edges and corners of the display panel as it may lead to damage. During installation, handle the flexible cable connectors with care, as improper handling can result in screen or phone damage, or even safety issues.

**Troubleshooting:**

**Issue 1:** Screen not lighting up.

**Answer:** The display screen cable connector may be loose. Try reinstalling the cable connector and double-check the connection. Ensure you disconnect the battery connector before connecting the cable. After the reinstallation, perform a hard reset on the phone and power it on.

**Issue 2:** Lines on the screen.

**Answer:** Do not apply pressure to the four corners of the display panel.

Pressure can damage the display panel. Handle the flexible data cable connectors with care during installation. Check for cable integrity and dust at the connections. Then, reconnect all cables and power on the device. If lines persist, the screen may be damaged.


**Issue 3:** Touchscreen unresponsive.

**Answer:** The digitizer cable may have a poor connection. Turn off the phone, clean the connectors on the logic board, and reconnect all cables. Perform a hard reset on the phone and power it on.

**Note:** We offer free warranty service for defective or damaged screens. Thank you for your cooperation.



**Documents / Resources**

	<p><a href="#">GULEEK A1984 6.1 Inch 3D Touch Digitizer LCD Display Assembly</a> [pdf] Installation Guide A1984 6.1 Inch 3D Touch Digitizer LCD Display Assembly, A1984, 6.1 Inch 3D Touch Digitizer LCD Display Assembly, 3D Touch Digitizer LCD Display Assembly, Touch Digitizer LCD Display Assembly, Digitizer LCD Display Assembly, LCD Display Assembly, Display Assembly, Assembly</p>
---	--

**References**

- [User Manual](#)

[Manuals+.](#) [Privacy Policy](#)

This website is an independent publication and is neither affiliated with nor endorsed by any of the trademark owners. The "Bluetooth®" word mark and logos are registered trademarks owned by Bluetooth SIG, Inc. The "Wi-Fi®" word mark and logos are registered trademarks owned by the Wi-Fi Alliance. Any use of these marks on this website does not imply any affiliation with or endorsement.