



Guide Sensmart T120 Series Entry Level Portable Thermal Camera User Manual

[Home](#) » [Guide sensmart](#) » Guide Sensmart T120 Series Entry Level Portable Thermal Camera User Manual 



T120 Series Entry Level Portable Thermal Camera User Manual



T Series

Entry-level Portable Thermal Camera

Contents

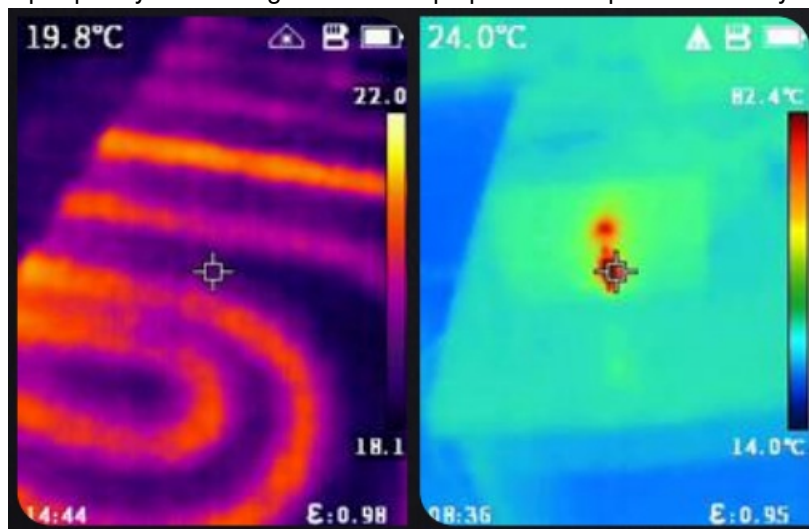
- [1 T120 Series Entry Level Portable Thermal Camera](#)
- [2 Introduction](#)
- [3 Features and Benefits](#)
- [4 Application](#)
- [5 Specifications](#)
- [6 Documents / Resources](#)
 - [6.1 References](#)
- [7 Related Posts](#)

T120 Series Entry Level Portable Thermal Camera

See the heat of 10,800 pixels in 1 second

Introduction

T Series Entry-level Thermal Image Camera is an affordable temperature measuring tool widely used for building diagnostics, HVAC inspections, electrical system inspections and more. It perfectly overcomes the shortcomings of the single spot infrared thermometers and helps work smarter, safer and faster. Equipped with Guide's selfdeveloped 120×90 WLP IR modules, T120 series thermal cameras can display radiometric data of 10,800 pixels instantly which helps quickly detect large areas and pinpoint fault spots accurately.



Features and Benefits

- Boot-up in 1 second Boot up and display fully radiometric image instantly
Full screen max & min temperature alarm
- 2.4 inch Large Display
240×320 pixel Color LCD
- Good-handle Buttons
Ergonomic design
Easy to operate even wear the gloves
- 8-hour Battery Life

- Low power consumption
- Large capacity battery
- 2-hour Quick Charge
- USB Type-C Interface
- High power quick charge
- IR/Visible/Laser Indicator
- Pinpoint targets precisely
- Trigger Button
- Trigger button for photo taking
- Rugged Design
- 2-meter Drop Test, IP54 Encapsulation

Application

- Building Diagnostics
- HVAC Inspection
- Facilities maintenance
- Electrical Application

Specifications

Model	T120	T120V
Imaging and optics		
Detector type	VOx	
Infrared resolution	120 × 90@17μm	
Wavelength range	7.5 to 14μm	
Focal length	2.28 mm	
Field of view	50° × 38°	
Minimum object distance	0.5 m	

D:S	130:1	
NETD	≤60 mK	
Infrared frame rate	25 Hz / 9 Hz	
Focusing mode	Focus-free	
Measurement and analysis		
Measurement range	Support auto-switching: -20°C to 150°C, 100°C to 400°C	
Measurement accuracy	±2°C or ±2%, whichever is greater	
Analyzed target	Center spot and 3 areas	
Tracking / Alarm	Full screen maximum/minimum temperature tracking; The maximum or minimum temperature tracking of analyzed target; full screen temperature threshold alarm (image)	
Temperature measuring parameters	Emissivity, reflected temperature, target distance	
Image display		
Display screen	2.4" LCD	
Digital camera	/	70,000 pixels
Image mode	IR	IR, VIS and PIP

Image adjustment	Automatic	
Color palettes	Iron Red, White Hot, Arctic, Rainbow 2, Hot Iron, Rainbow 1	
Storage and transmission		
Storage media	TF card (16 GB and up to 32 GB)	
Image storage format	JPG with temp info	
External interface	TYPE-C, TF card slot, UNC ¼"-20 (tripod mounting)	
Laser	645~655nm, Class 2 laser, 1mW, only indicating the measured target	
WIFI	/	Yes, it can be connected to the mobile terminal for image transmission
Power system		
Battery type	Rechargeable lithium-ion battery, non-removable	
Battery working time	≥8 hours	≥5 hours
Power management	Timed shutdown and sleep mode	
Charging mode	TYPE-C charging; PC/portable charger; Capable of charging while using	
Charging time	90% of full charge in 2.5 hours	
Environmental parameters		

Working temperature	-10°C to 50°C
Storage temperature	-40°C to 70°C
IP rating	IP54
Drop	2m drop test
Certification	CE, FCC, ROHS, KCC, IP54, 2m drop test, Damp heat test, Vibration test, Shock test, Impact test, UN38.3, MSDS
Physical parameters	
Weight	≤350 g
Size (L × W × H)	194 × 61.5 × 76 mm
Software kit	ThermoTools
Standard	A device, Wrist strap, Quick Start Guide, Power adapter, Adapter plug, Type-C U SB cable, Data download card, TF card (16 GB), Certificate of approval
Options	Tripod

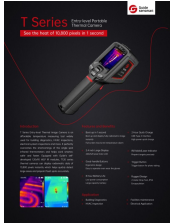
*Technical parameters are subject to change without notice. For the latest information, please visit our website: www.guideir.com





Guide Sensmart Tech Co., Ltd.
Loeffelholzstrasse 20, Haus 12 Eingang
Nord, 90441 Nuremberg, Germany
Email: enquiry@guide-infrared.com

Documents / Resources



[Guide Sensmart T120 Series Entry Level Portable Thermal Camera](#) [pdf] User Manual
T120 Series Entry Level Portable Thermal Camera, T120, Series Entry Level Portable Thermal
Camera, Portable Thermal Camera, Thermal Camera, Camera

References

- [US Infrared Inc. - Infrared Cameras, Security Systems](#)
- [Guide Sensmart-Thermal Imaging Camera Manufacturer | Guide Sensmart](#)