



## Guide sensmart D Series Intelligent Thermal Camera Owner's Manual

[Home](#) » [Guide sensmart](#) » Guide sensmart D Series Intelligent Thermal Camera Owner's Manual 



# Guide sensmart

D Series Intelligent  
Thermal Camera  
Intelligent Operation Affordable Price

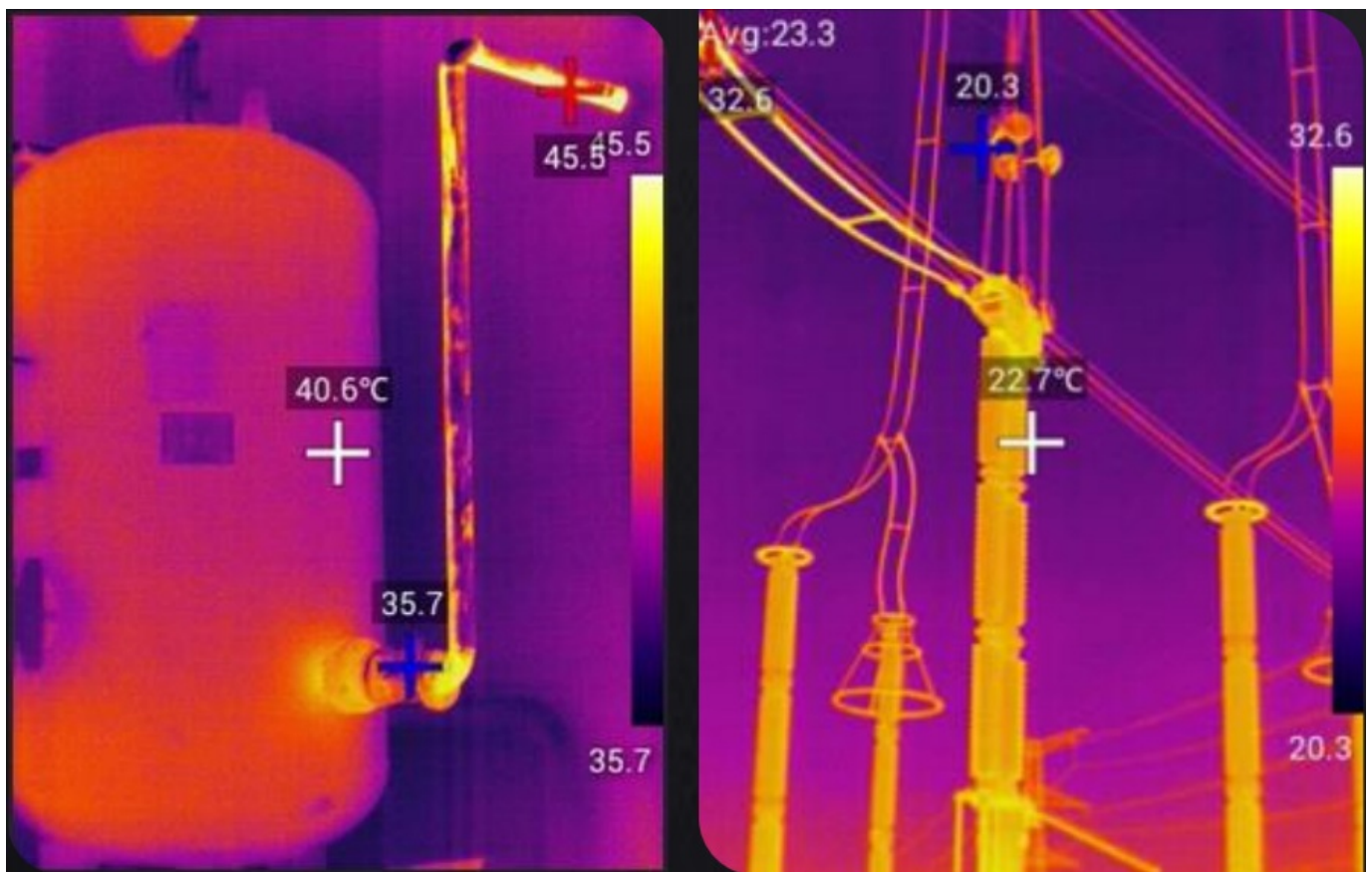


## Contents

- [1 Introduction](#)
- [2 Features and Benefits](#)
- [3 Application](#)
- [4 Specifications](#)
- [5 Documents / Resources](#)
  - [5.1 References](#)
- [6 Related Posts](#)

## Introduction

D Series intelligent thermal camera is simple, compact and ergonomic. It equipped with 4-inch high-brightness touchscreen, Android operating system, user-friendly UI for easy operation. And every step has professional tips, so that the first user can become an expert quickly. With high IR resolution and various powerful functions, D series is the ideal thermal inspection tool for power inspection, equipment maintenance and building diagnostic applications.



## Features and Benefits

- 4" high light touch screen, all operation can be completed the touch screen
- You can choose the proper lens for different occasions
- Built-in illuminator, take visible photos in the low lighting environment
- Removable SD card, Up to 32G storage capacity
- Wi-Fi communication, share IR images and findings immed
- Connected with mobile terminal to take IR photo, to achievmulti screen control

## Application

- Mechanical maintenance
- Building diagnostic
- Telecom equipment inspection
- Electrical equipment inspection

## Specifications

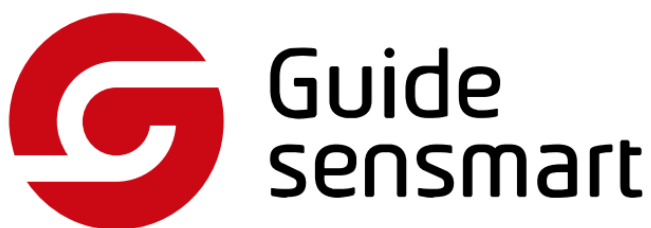
Model	D192F	D192M	D384F	D384M	D384A
Imaging and optics					
Detector type	VOx				
Infrared resolution	192 × 144@25μm		384 × 288@25μm		
Super resolution technology	/		Yes, Upgrade to 768 × 576		
Wavelength range	7.5 to 14μm				
Focal length	7 mm		19 mm		15 mm
Field of view	38° × 29°		28° × 22°		35° × 27°
Minimum object distance	1 m	0.5 m	1 m	0.5 m	0.4 m
D:S	289:1		775:1		625:1
NETD	≤50 mK		≤45 mK		≤40 mK
Infrared frame rate	25 Hz / 9 Hz				
Focusing mode	Focus-free	Manual	Focus-free	Manual	Electric / Automatic
Digital zoom	1.1x to 4x				
Shot recognition	/	Manual	/	Manual	/
Measurement and analysis					
Measurement range	-20°C to 350°C	-20°C to 150°C , 100°C to 650°C, Optional 650°C to 1500°C (High temperature lens is required)	-20°C to 350°C	-20°C to 150°C , 100°C to 650°C, Optional 650°C to 1500°C (High temperature lens is required)	-20°C to 150°C , 100°C to 650°C
Measurement accuracy	±2°C or ±2%, whichever is greater				
Analyzed target	Spot × 5, Line × 2, Area × 5				

<b>Tracking / Alarm</b>	Full screen maximum, minimum and average temperature tracking; The maximum, minimum and average temperature tracking of analyzed target; full screen temperature threshold alarm (image)	
<b>Isothermals</b>	Available	
<b>Temperature measuring parameters</b>	Emissivity, reflected temperature, dew point, target distance, humidity	
<b>Image display</b>		
<b>Display screen</b>	4" LCD	
<b>Digital camera</b>	5 MP	
<b>Image mode</b>	IR, VIS, MIF and PIP	
<b>Image adjustment</b>	Automatic, semi-automatic, manual	
<b>Color palettes</b>	White Hot, Fulgurite, Iron Red, Hot Iron, Medical, Arctic, Rainbow 1, Rainbow 2	
<b>Storage and transmission</b>		
<b>Storage media</b>	Local storage (16 GB) and TF card (16 GB and up to 128 GB)	
<b>Image storage format</b>	JPG with temp info	
<b>Video storage without temperature information</b>	Mp4 format can be used to record audio synchronously	
<b>Video storage with temperature information</b>	Irgd for temperature analysis	
<b>External interface</b>	Micro USB, Micro HDMI, DC (12V) , TF card slot	
<b>Laser</b>	645~655nm, Class 2 laser, 1mW, only indicating the measured target	
<b>Audio</b>	Recording and playback through microphones and speakers respectively	
<b>WIFI</b>	Yes, it can be connected to the mobile terminal for image and real-time video transmission	
<b>Bluetooth</b>	/	Available
<b>Power system</b>		
<b>Battery type</b>	Lithium-ion rechargeable battery	
<b>Battery working time</b>	≥4 hours	
<b>Power management</b>	Timed shutdown and sleep mode	
<b>Charging mode</b>	The device can be charged through desktop charger after shutdown.	
<b>Charging time</b>	5 hours	
<b>Environmental parameters</b>		

<b>Working temperature</b>	-10°C to 50°C				
<b>Storage temperature</b>	-40°C to 70°C				
<b>IP rating</b>	IP54				
<b>Certification</b>	CE, FCC, ROHS, KCC, Anatel, UN38.3, MSDS				
<b>Physical parameters</b>					
<b>Weight</b>	≤735 g (with battery)	≤840 g (with battery)	≤735 g (with battery)	≤840 g (with battery)	≤735 g (with battery)
<b>Size (L × W × H)</b>	274 × 97 × 78 mm			274 × 110 × 78 mm	274 × 91 × 78 mm
<b>Software kit</b>	ThermoTools				
<b>Standard</b>	A device, Wrist strap, Lithium-ion battery, Power adapter, Adapter plug, Micro USB cable, Micro HDMI cable, Quick Start Guide, Instructions, Data download card, Capacitive screen gloves, TF card (16 GB), EPP case		A device, Wrist strap, Lithium-ion battery, Power adapter, Adapter plug, Micro USB cable, Micro HDMI cable, Quick Start Guide, Instructions, Data download card, Capacitive screen gloves, TF card (16 GB), A carrying case		
<b>Options</b>	Lithium-ion battery, Carrying bag, Desktop charger, Tripod interface, Tripod, Sunshade	Lithium-ion battery, Carrying bag, Desktop charger, Tripod interface, Tripod, Sunshade, Expanded lens	Lithium-ion battery, Carrying bag, Desktop charger, Tripod interface, Tripod, Sunshade	Lithium-ion battery, Carrying bag, Desktop charger, Tripod interface, Tripod, Sunshade, Expanded lens	Lithium-ion battery, Carrying bag, Desktop charger, Tripod interface, Tripod, Sunshade, Bluetooth headset

#### Optional lens information list

Model	D192M	D384M
<b>Standard Lens</b>		
Focal length	7mm	19mm
FOV	38°×29°	28°×22°
IFOV	3.45mrad	1.29mrad
Min focus distance	0.5m	0.5m
<b>Wide Angle</b>		
Focal length	/	8.8mm
FOV	/	57°×45°
IFOV	/	2.65mrad
Min focus distance	/	0.3m
<b>Ultra-Telephoto</b>		
Focal length	19mm	40mm
FOV	14.4°×10.8°	13.7°×10.3°
IFOV	0.65mrad	0.62mrad
Min focus distance	1m	1m
<b>High Temp</b>		
Temp Measurement Range	650°C~1500°C	



**Guide Sensmart Tech Co., Ltd.**

Loeffelholzstrasse 20, Haus 12 Eingang Nord, 90441 Nuremberg, Germany

Email: [enquiry@guide-infrared.com](mailto:enquiry@guide-infrared.com)



\*Technical parameters are subject to change without notice.

For the latest information, please visit our website:

[www.guideir.com](http://www.guideir.com)

## Documents / Resources



[Guide sensmart D Series Intelligent Thermal Camera](#) [pdf] Owner's Manual  
D Series, Intelligent Thermal Camera, D Series Intelligent Thermal Camera, Thermal Camera, Camera

## References

- [US Infrared Inc. - Infrared Cameras, Security Systems](#)
- [Guide Sensmart-Thermal Imaging Camera Manufacturer | Guide Sensmart](#)