



Guest Internet GIS-R10 High Performance Dual WAN Hotspot Gateway Instruction Manual

[Home](#) » [Guest Internet](#) » Guest Internet GIS-R10 High Performance Dual WAN Hotspot Gateway Instruction Manual 

Contents

- [1 Guest Internet GIS-R10 High Performance Dual WAN Hotspot Gateway](#)
- [2 Product Information](#)
- [3 Product Usage Instructions](#)
- [4 GIS-R10 Technical Specifications](#)
- [5 Documents / Resources](#)
 - [5.1 References](#)
- [6 Related Posts](#)



Guest Internet GIS-R10 High Performance Dual WAN Hotspot Gateway



Product Information

The GIS-R10 is a high-performance dualWAN Hotspot gateway with a throughput of 400 Mb/s. It is popular in

over 65 countries and is a multi-functional device suitable for various applications. It is commonly used in hotels, motels, luxury resorts, campgrounds, RV parks, shopping malls, schools, universities, airports, government buildings, and sports stadiums.

This product features new generation software that offers improved usability, faster performance, and additional features such as cellular roaming and VLAN. It helps reduce wireless network installation costs by half.

The GIS-R10 provides a range of options for guest internet access, including guest login using disclaimer codes, contact data collection, custom login pages, auto login, approved device access, voucher login for cash sales, and 2-tier login for free slow speed or paid high-speed internet. It also offers free cloud management to remotely manage users, codes, and settings from a single location.

The product can be easily configured using the setup wizard, and no technical knowledge is required for installation. It allows businesses to monetize internet services through the cash sale of vouchers, receipts, or online credit card charging.

The GIS-R10 has various gateway features such as cloud management (optional), firewall with LAN-to-WAN access blocking, content filtering with OpenDNS, download/upload speed control, allowed IP and MAC addresses, scheduled availability, access point failure monitoring, port-forwarding for remote access to APs, and email login for data collection.

It supports unlimited users with a throughput of up to 400Mb/s and can store up to 10,000 access codes in its database. It also offers an API for POS integration to sell access codes and manage them via HTTP.

The product has dual-WAN Ethernet ports for WAN1 and WAN2 with load-balance and fail-over capabilities. It also features LAN1, LAN2, LAN3, and LAN4 ports with Gigabit Ethernet connectivity. There is an option to bridge the LAN to WAN using VLAN.

The GIS-R10 is designed for commercial-grade installation in non-industrial environments. It has dimensions of 44cm x 26cm x 4.5cm and operates on a 110v/220v power supply with a power consumption of 40W. The product comes with a 1-year warranty for product defects.

It offers various login page options such as unique user code login, purchase code with PayPal or credit/debit card, social media login with Facebook, login with email for data capture, disclaimer mode, open access mode, and two-tier access (slow free + fast paid).

Product Usage Instructions

To set up the GIS-R10, follow these steps:

1. Connect the WAN1 and WAN2 Ethernet ports to your internet sources.
2. Connect the LAN1, LAN2, LAN3, and LAN4 Ethernet ports to your local network devices.
3. Power on the GIS-R10 using a 110v/220v power supply.
4. Access the setup wizard through the admin interface.
5. Follow the setup wizard's instructions to configure the device based on your requirements.

To provide internet access for guests and visitors, choose one of the following options:

- Guest login using disclaimer codes
- Contact data collection
- Custom login pages

- Auto login
- Approved device access
- Voucher login for cash sales
- 2-tier login (free slow speed + paid high-speed internet)

To customize the login pages and branding, use the login page generator and upload custom background images. Full customization with HTML and CSS login pages can be done via the admin interface.

For further information, contact Fire4 Systems Inc at 1-800-213-0106 or visit their website at www.guest-internet.com. The company is located at Guest Internet Solutions, 6073 NW 167 St., Unit C-12, Miami, FL 33015, USA.

GIS-R10

Outdoor Hotspot wireless gateway with up to 100 Mb/s throughput

- Popular in 65+ countries.
- A high-performance multi-functional Hotspot controller that is plug and play, very easy to install and use.
- Business owners can control Internet access through a login page.
- Share the Internet service between many users and improve user satisfaction and productivity with easy Internet access.
- Provide free public Internet or charge for the service with voucher printing methods to give or sell access codes.
- Sell Internet access on-line with Paypal(R) CC billing.
- Brand the customizable login page to promote and grow your business.
- No limit to the numbers of users.
- Advanced cyber-security, content control and filtering.
- Protection from hackers with malware detection minimizing business liability.
- Supports multi-site installations with roaming between wireless units to implement a mobile broadband network.
- API for integration of PMS & PoS management applications.
- Includes a point of sale interface for applications such as Internet cafes.
- FREE online support, cloud service and software upgrades.
- FREE cloud system for failure monitoring, remote management and analytics of use.
- NO monthly or annual fees.
- Long range wireless 802.11/N, 300Mb/s performance.

www.guest-internet.com



APPLICATIONS

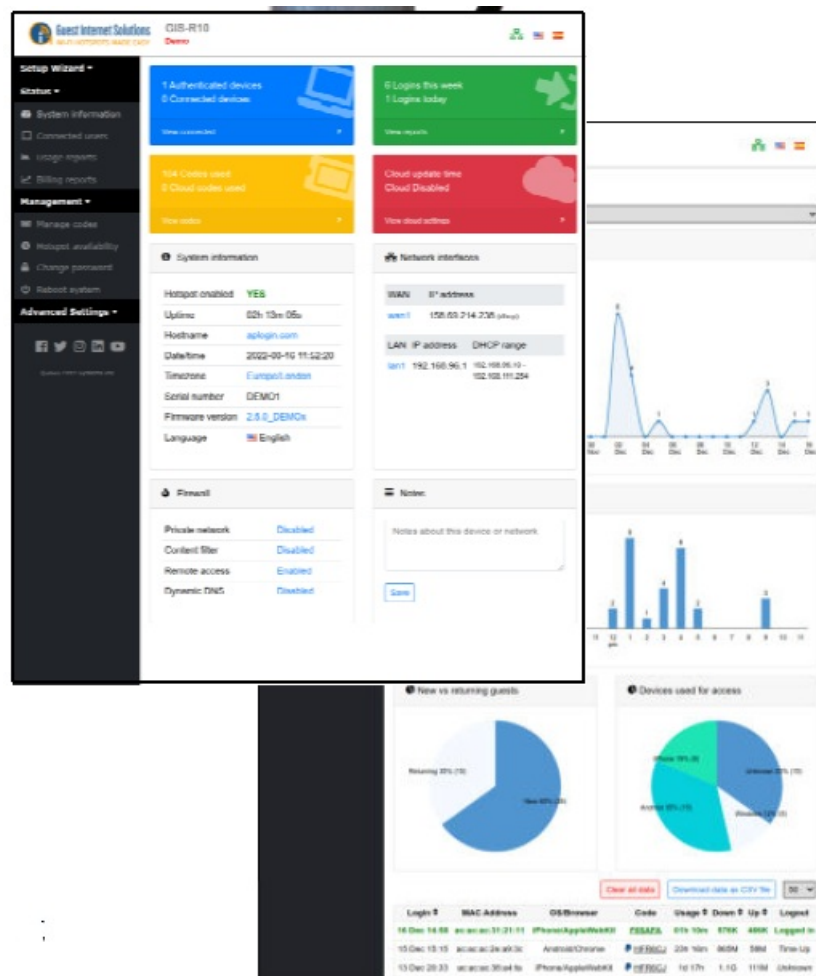
The GIS-R10 is suitable for campgrounds, RV parks, public parks, sport fields, farmer's market, small music festivals and other outdoor public locations.

NEW GENERATION SOFTWARE

Guest Internet products have new generation software that is easier to use, has faster performance and adds a range of new features that include cellular roaming and VLAN.

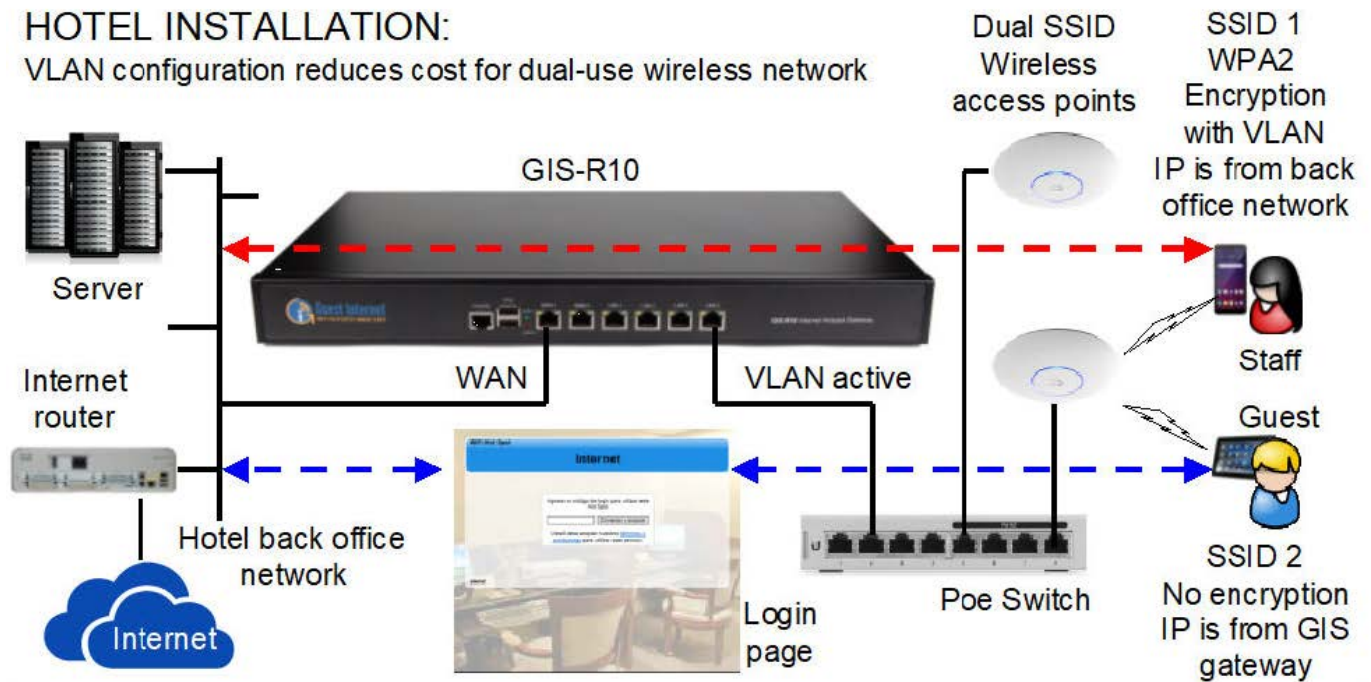
CUT WIRELESS NETWORK INSTALLATION COST IN HALF

Hotels can half the cost of the wireless network installation for guests and staff by using dual-SSID wireless access points together with a Guest Internet gateway. Staff can connect directly to the back office network over the VLAN network with the GIS gateway configured as a bridge. With no VLAN configured for the wireless access point SSID then guests connect to the login page. The GIS gateway is configured as a router with access to the Internet only after login. Access to the back office network for guests is blocked by the PCI compliant firewall.

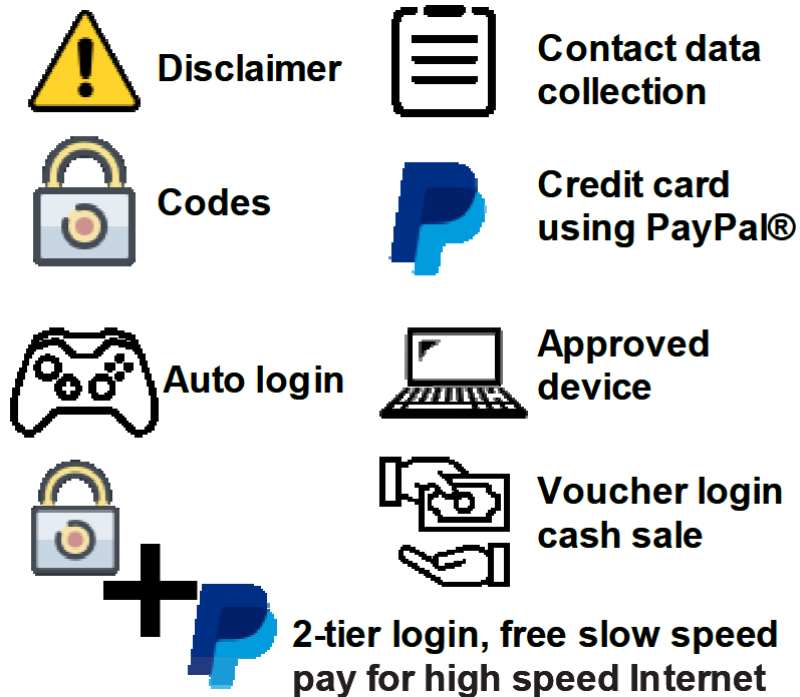


HOTEL INSTALLATION:

VLAN configuration reduces cost for dual-use wireless network



Guest login using:



Custom Login pages



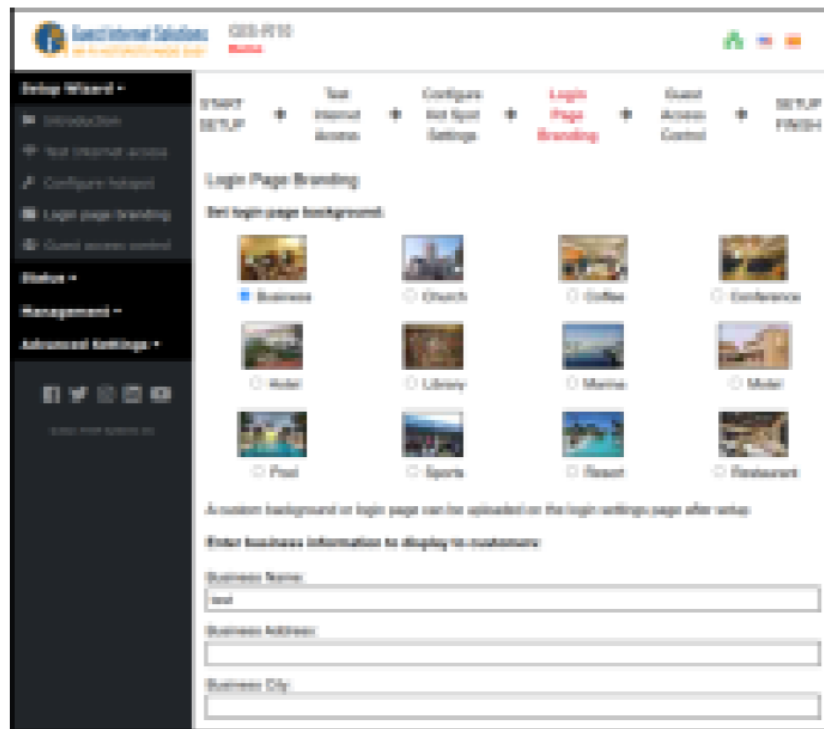
Create custom login pages to increase brand awareness and offer promotions

Free Cloud Management



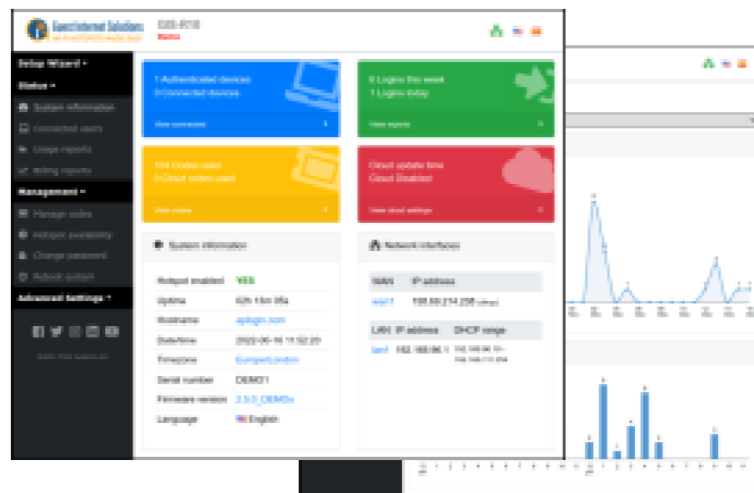
Manage Users, codes and settings for multiple sites remotely from a single location

Very easy and simple configuration



No technical knowledge is required to install as the setup wizard leads you through the configuration

Print and give or sell access vouchers



Select one of many different options to provide Internet access for guests and visitors

Print and give or sell access vouchers



A business can monetize the Internet service through the cash sale of vouchers, receipts or charge credit cards on-line

GIS-R10 Technical Specifications

Gateway Features

- Cloud management (optional)
- Plug and play with the setup wizard
- Firewall Blocks access from LAN to WA Local and remote configuration
- Content filtering with OpenDNS
- Download/Upload speed control
- Allowed IP and MAC addresses
- Free and controlled Internet access
- Schedule to set availability
- Access point failure monitoring
- Peer to peer (P2P Torrent) blocking
- Email login for data collection

Authentication

- No limit to the number of users
- Throughput: up to 100Mb/s
- Access code database: 10000

API for POS interface

- PoS integration to sell access codes, create, delete, view and manage via HTTP

Ethernet ports (dual-WAN)

- WAN1: RJ-45 Gb, load-balance, fail-over
- WAN2: RJ-45 Gb, load-balance, fail-over
- LAN1, LAN2, LAN3, LAN4: RJ-45 Gb
- VLAN option to bridge LAN to WAN

Operation

- Commercial grade equipment suitable for installation in any non-industrial environment

Dimensions & Power

- Enclosure: 168mm x 88mm x 57.6mm
- 110v/220v supply 40W

Warranty

- 1 year for product defects

Login page options

- Unique user code login
- Purchase code with PayPal or credit/de bit card
- Voucher edit/print for cash sale
- Social Media login with Facebook
- Login with Email for data capture
- Disclaimer mode
- Open access mode

Customization

- Custom branding with the login page generator
- Upload custom background image
- Full customization with HTML and CSS login pages. Uploaded via the admin interface

Call 1-800-213-0106 for further information, or see our website: www.guest-internet.com Fire4 Systems Inc, Guest Internet Solutions, 6073 NW 167 St., Suite C12, Hialeah, FL 33015, USA.

Guest Internet Solutions is a business unit (DBA) of Fire4 Systems Inc., a Florida Corporation. Copyright © Fire4 Systems Inc., 2019. All rights reserved. Fire4, Guest Internet, Hospitality Internet and the respective logos are registered marks of Fire4 Systems Inc. All other registered marks, trademarks, service marks and logos are the property of their respective holders.

Documents / Resources



[Guest Internet GIS-R10 High Performance Dual WAN Hotspot Gateway](#) [pdf] Instruction Manual
GIS-R10 High Performance Dual WAN Hotspot Gateway, GIS-R10, High Performance Dual WAN Hotspot Gateway, Performance Dual WAN Hotspot Gateway, Dual WAN Hotspot Gateway, Hotspot Gateway, Gateway

References

- [Guest Internet Managed WiFi products and cloud service](#)

Manuals+.