



## Gude OFT 855 Routing Table Instructions

[Home](#) » [Gude](#) » Gude OFT 855 Routing Table Instructions 



Translation of the original instructions  
Router Table





OFT 855  
58086



Please read the instructions carefully before starting the machine.

## Contents

- [1 STARTING-UP THE MACHINE](#)
- [2 DELIVERY RANGE](#)
- [3 Assembly](#)
- [4 Starting-up the machine](#)
- [5 Operation](#)
- [6 Technical Data](#)
- [7 Specified Conditions Of Use](#)
- [8 Emergency procedure](#)
- [9 Symbols](#)
- [10 Additional Safety and Working Instructions](#)
- [11 Mains Connection](#)
- [12 Maintenance](#)
- [13 Service](#)
- [14 Documents / Resources](#)
- [15 Related Posts](#)

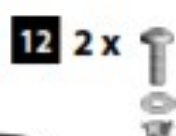
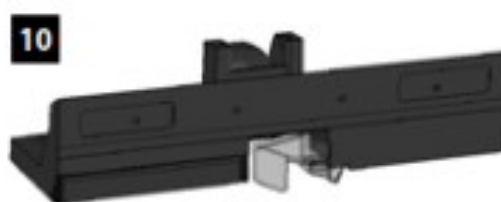
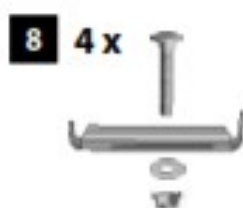
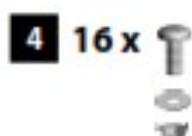


## STARTING-UP THE MACHINE



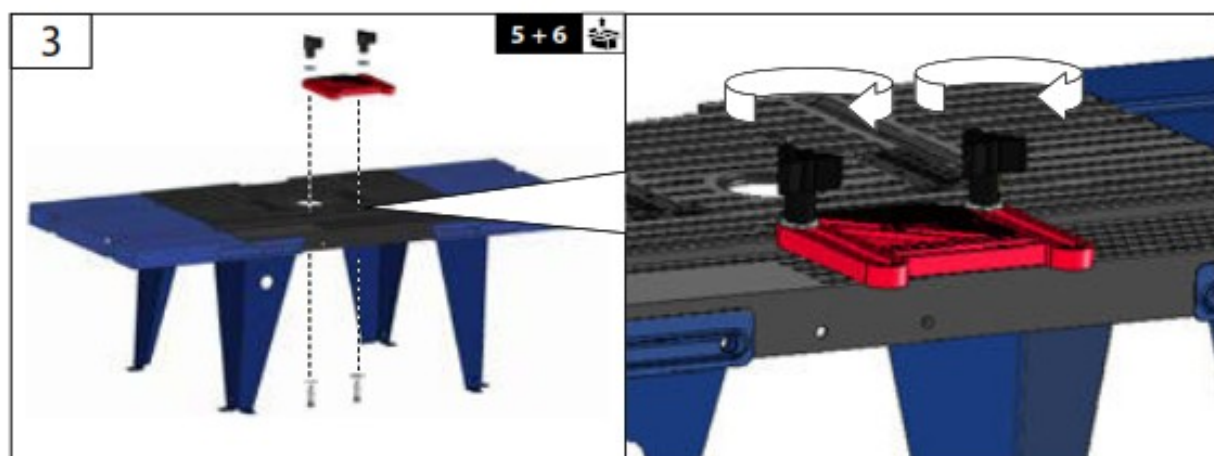
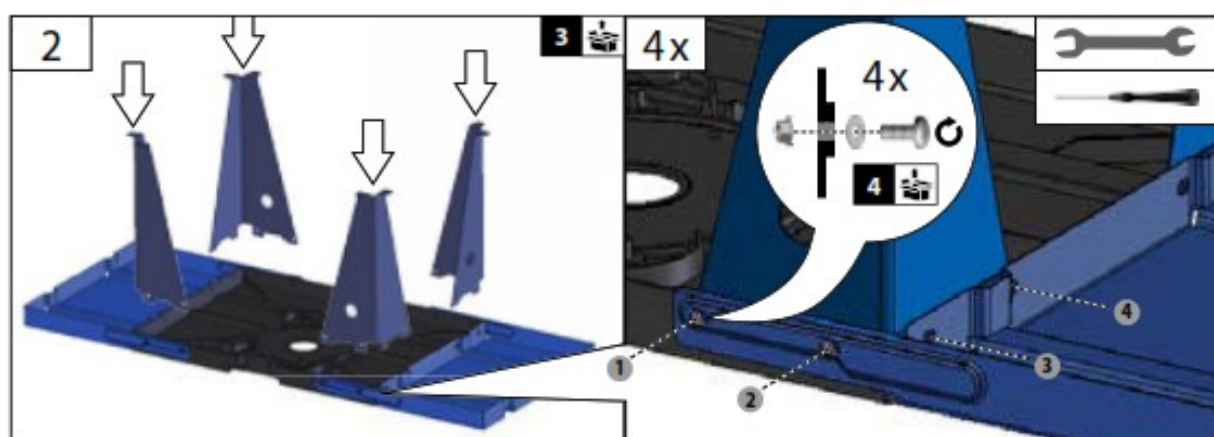
## DELIVERY RANGE



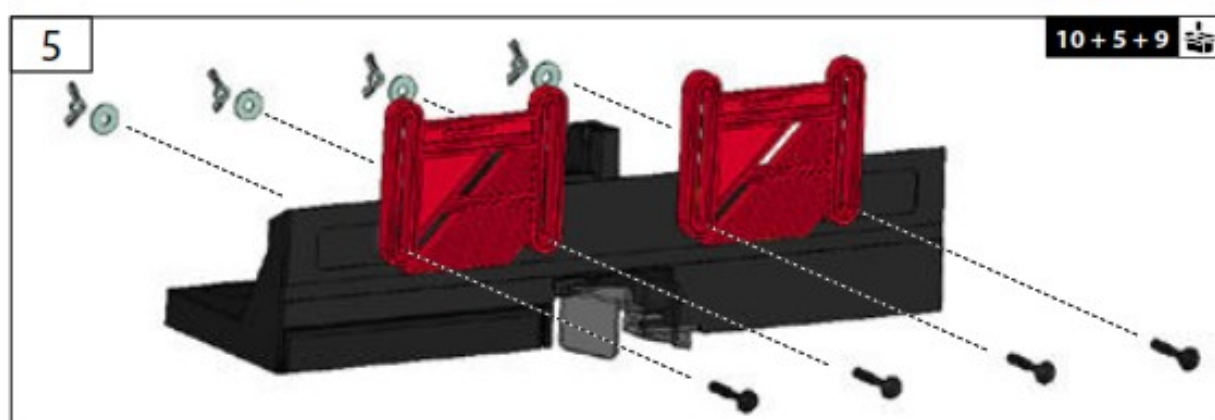
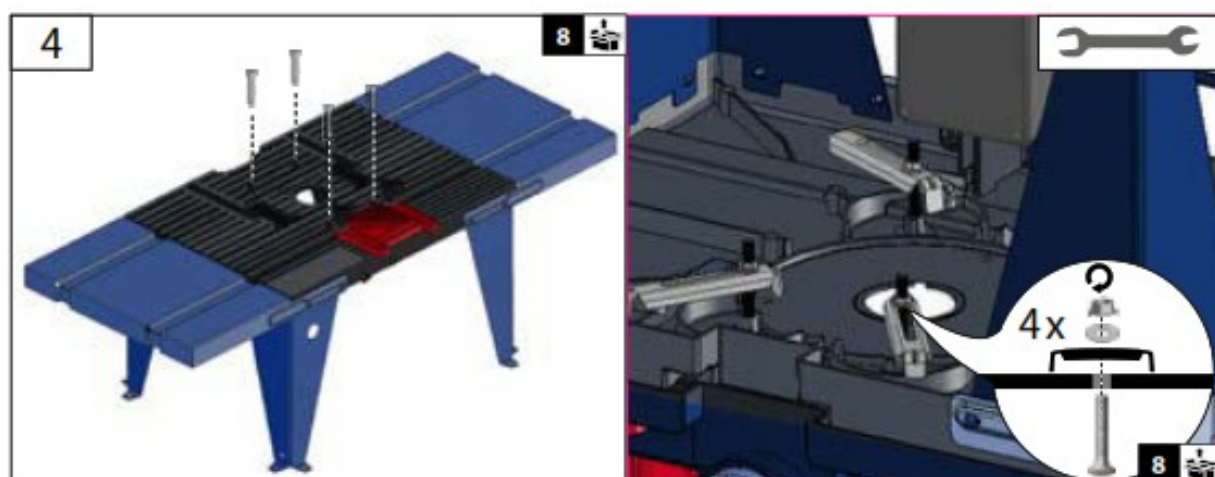


Assembly

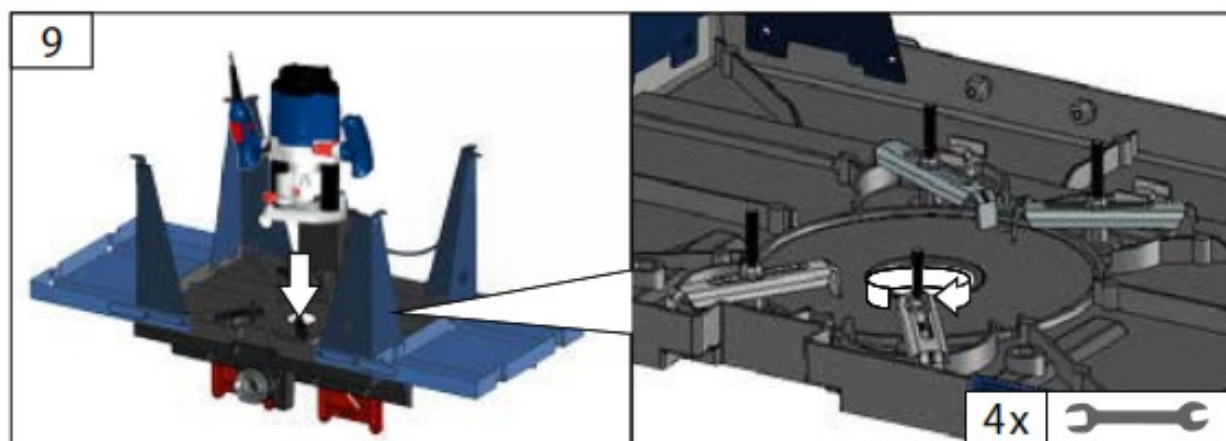
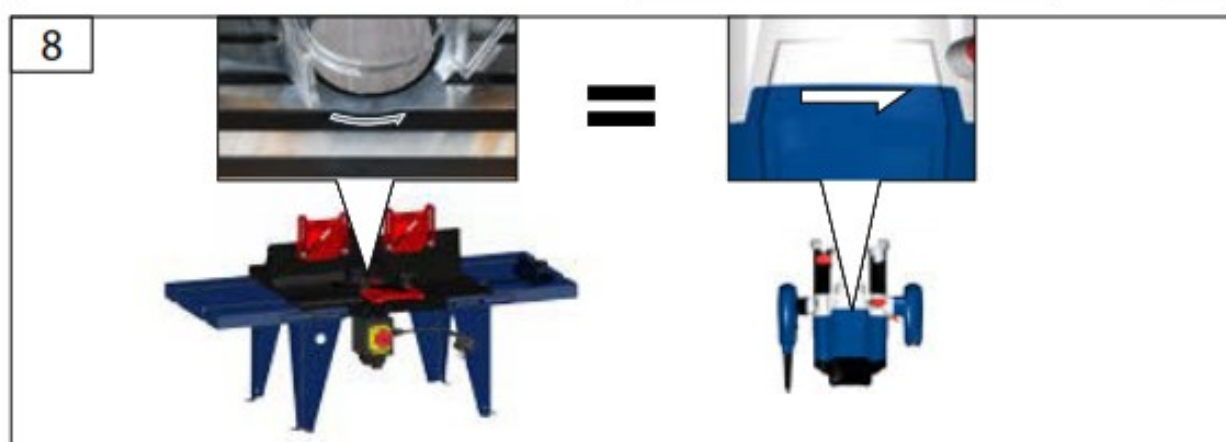
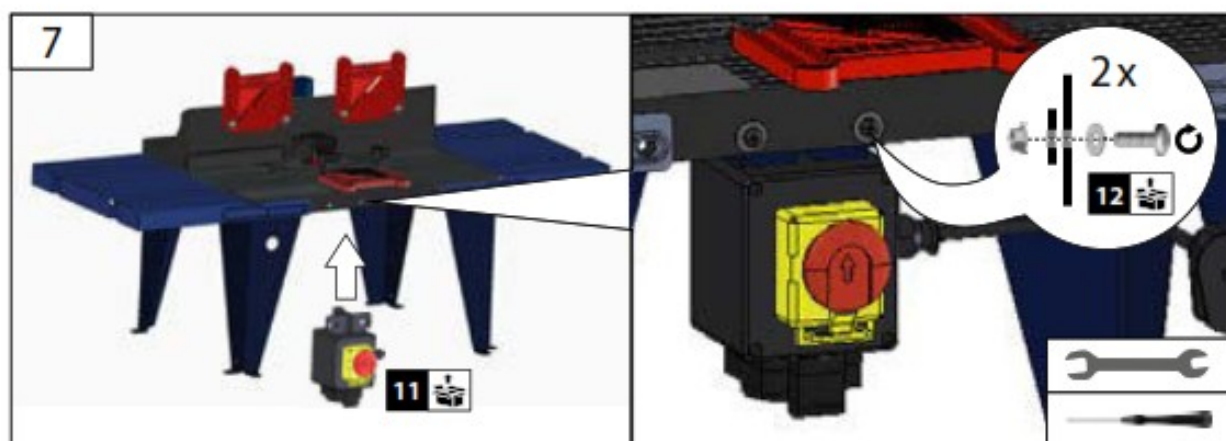




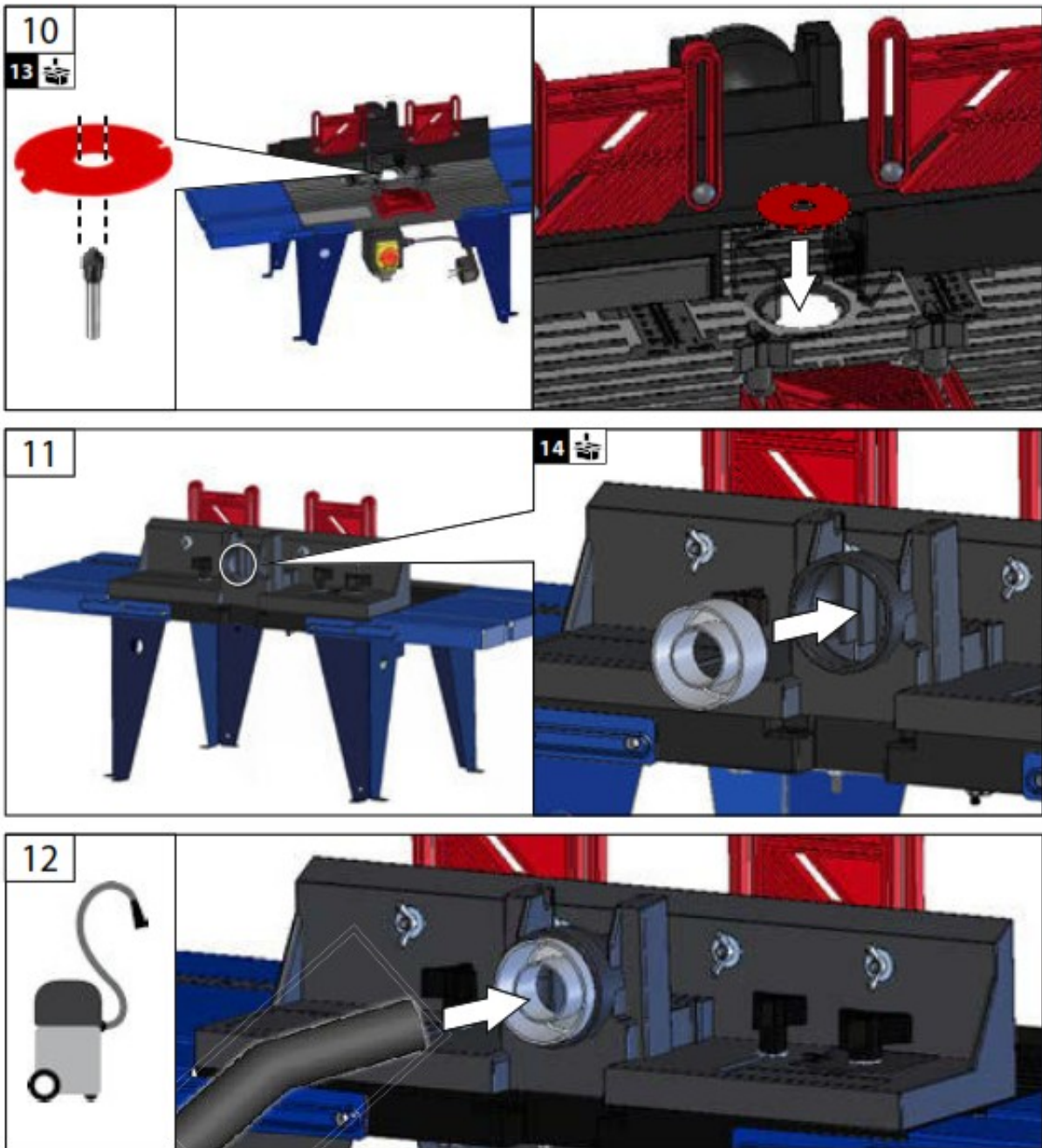






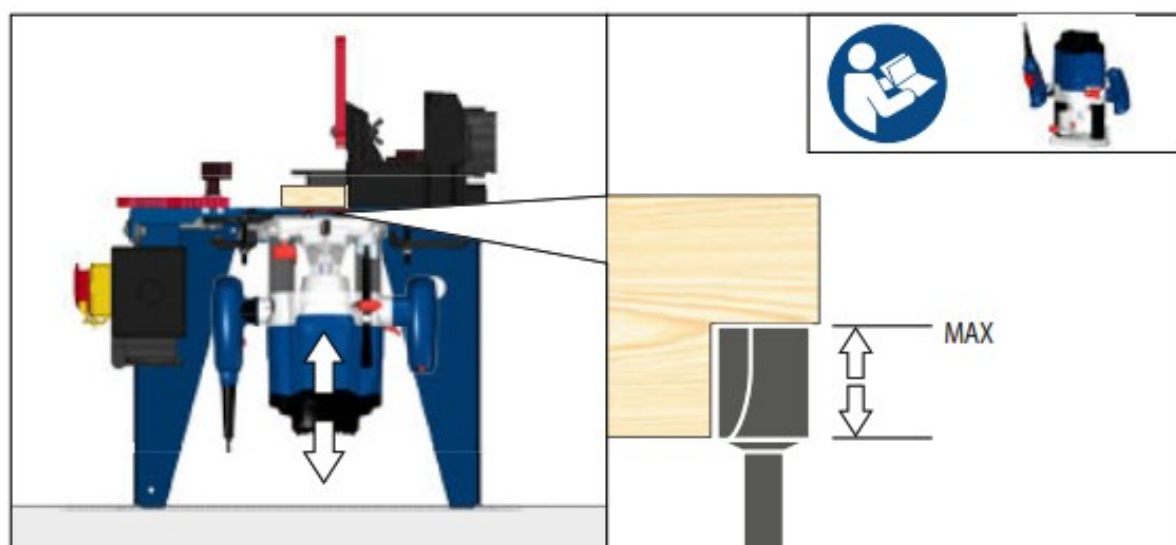
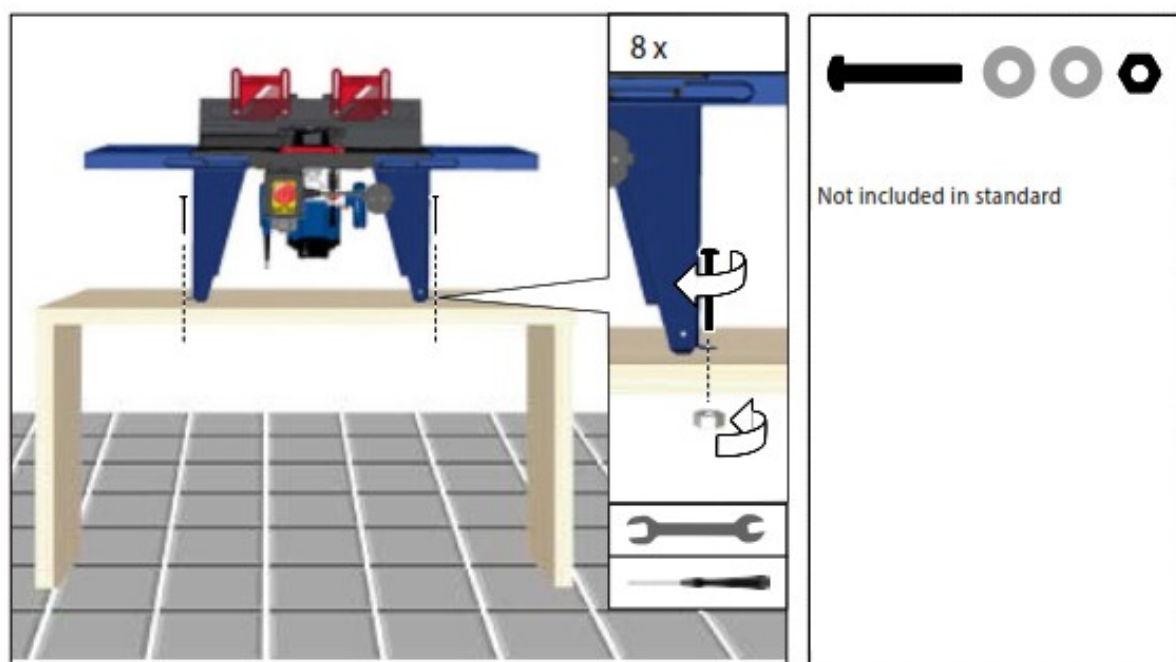




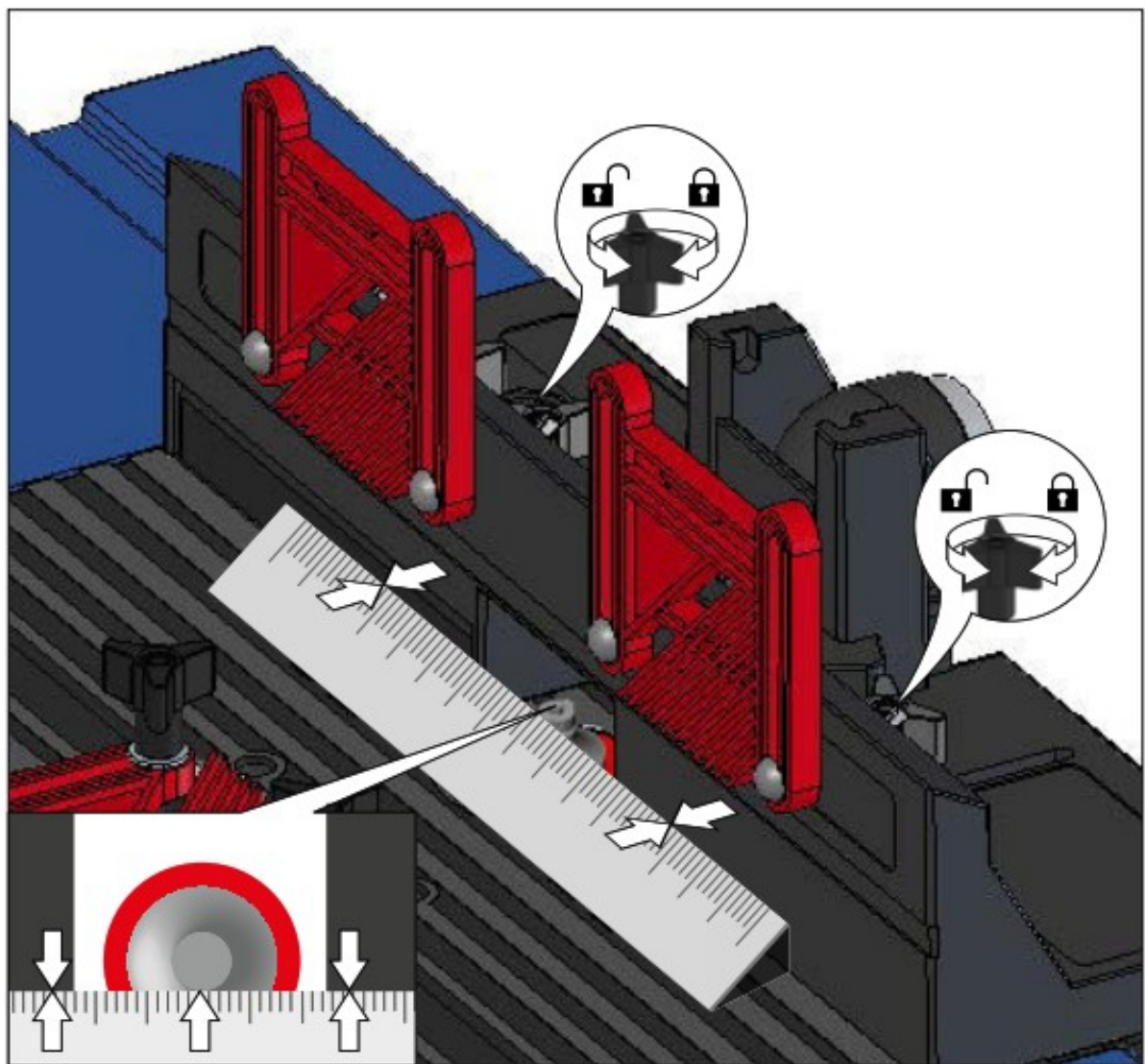


Starting-up the machine

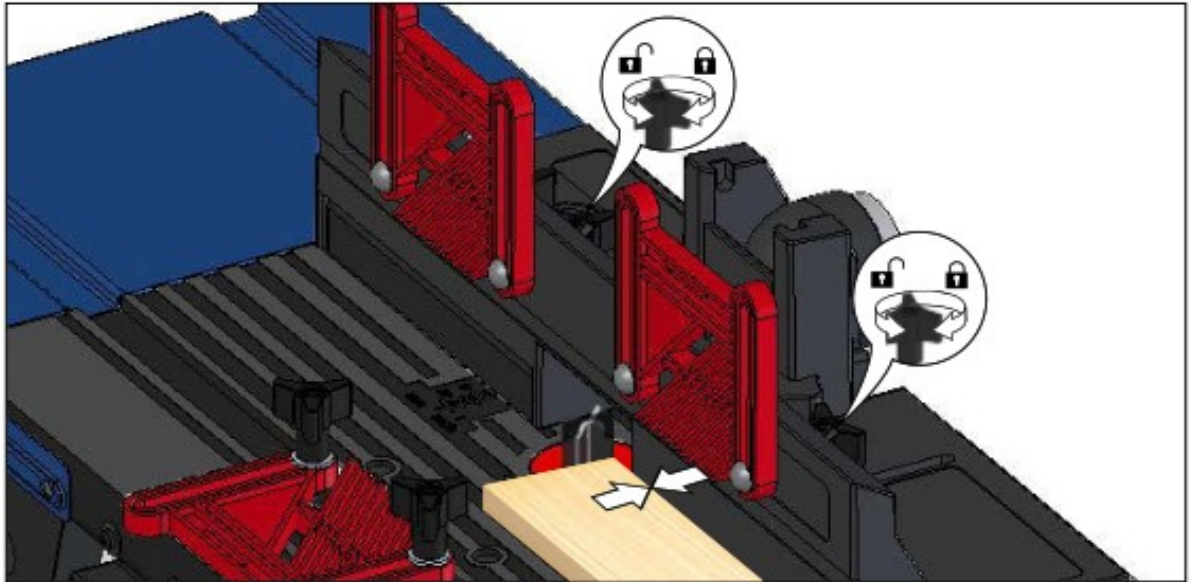




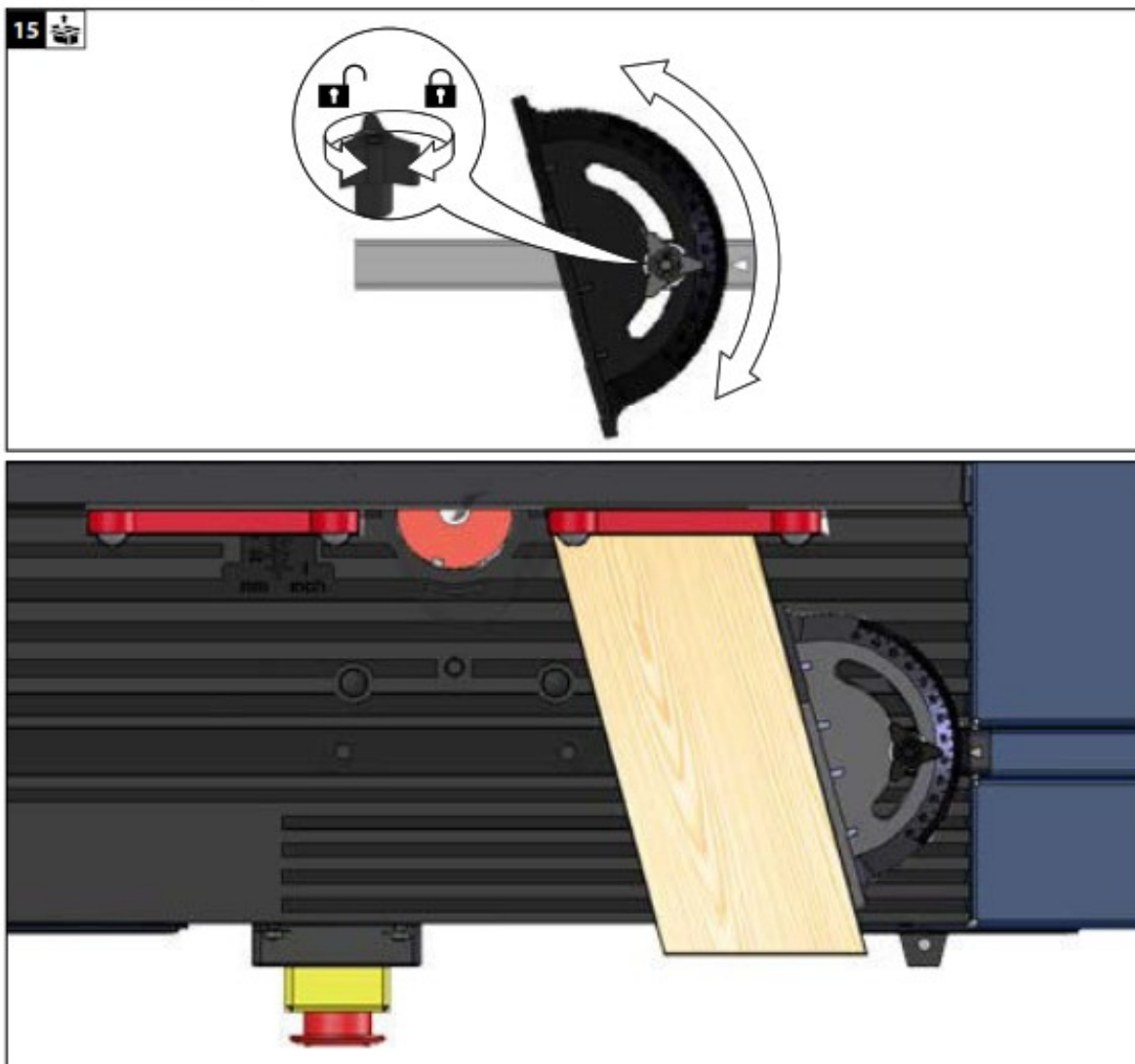
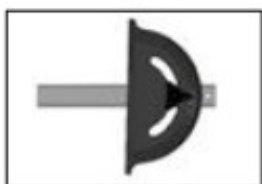




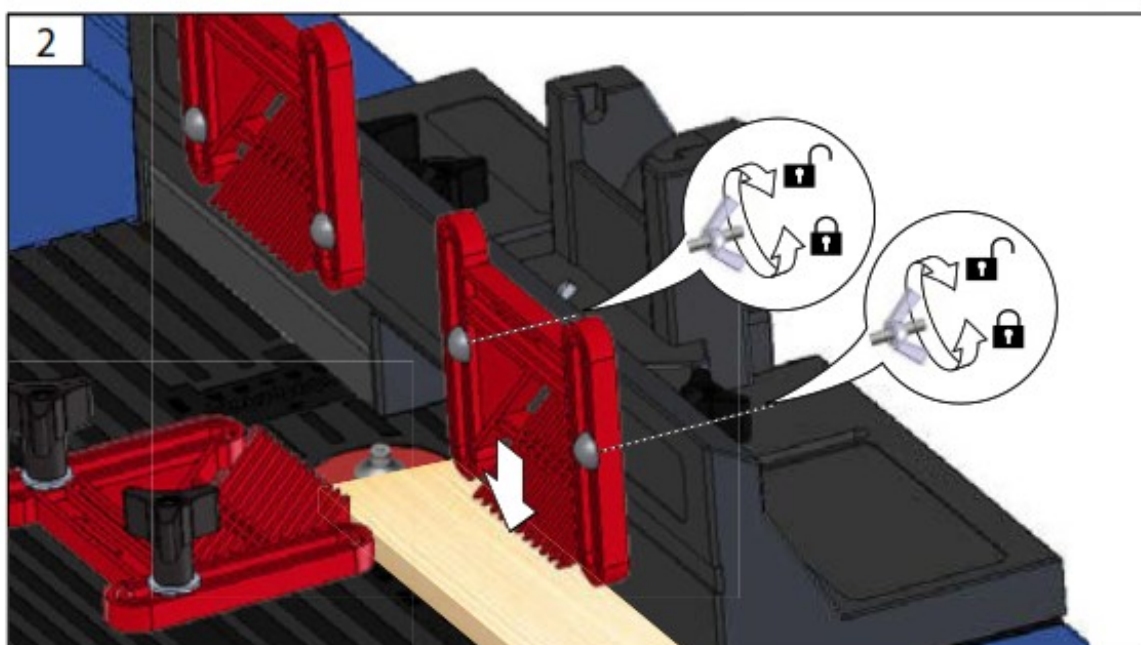
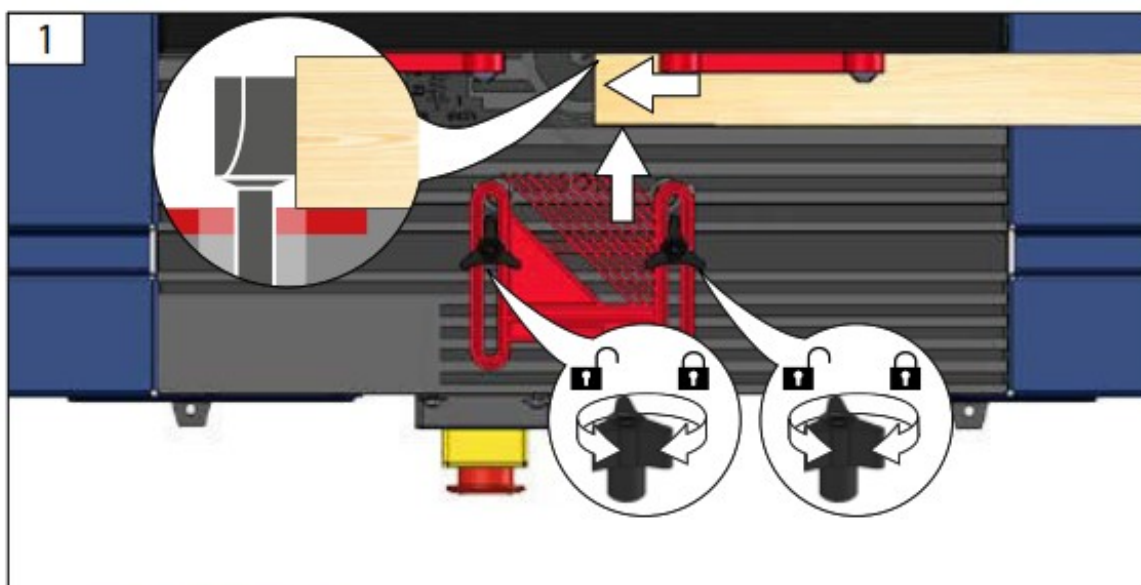




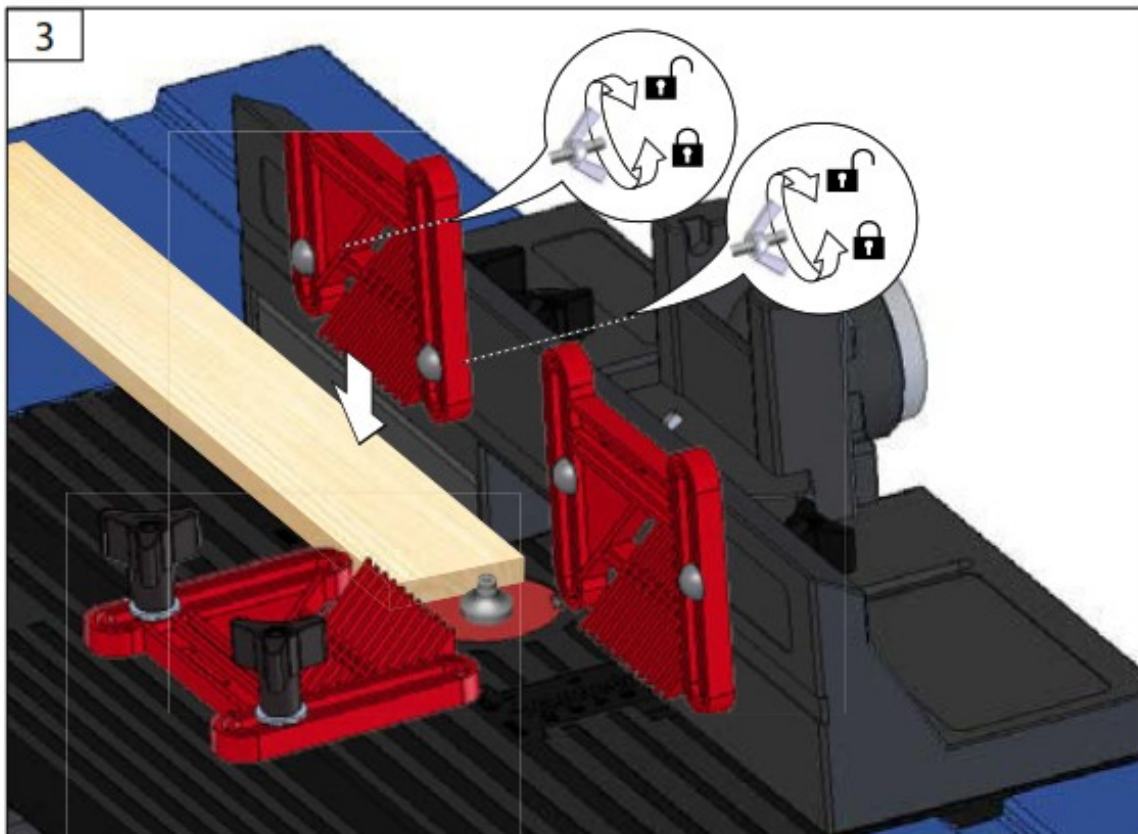






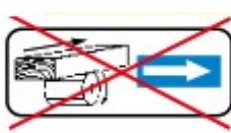






Operation

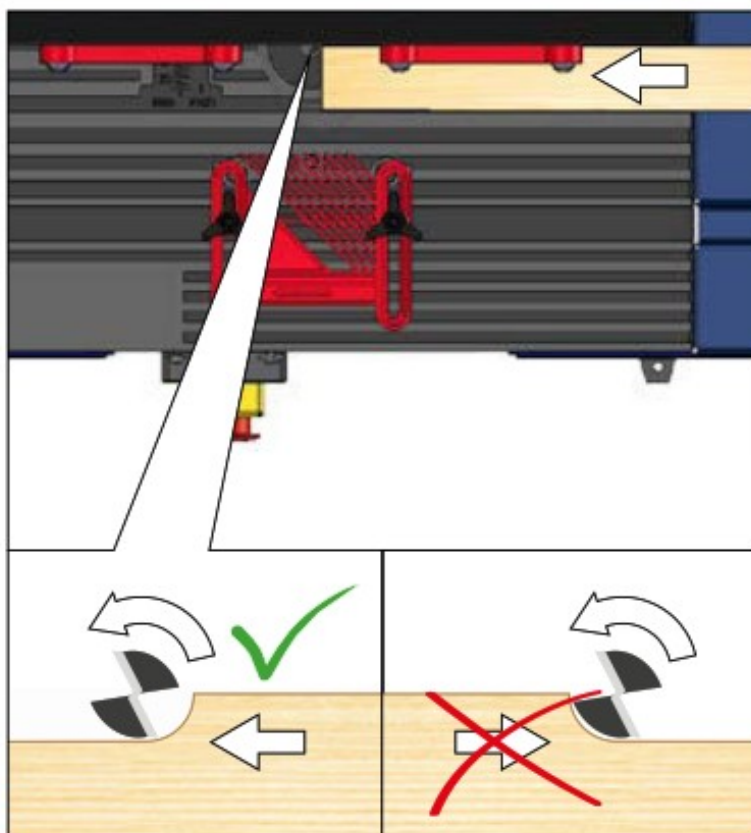




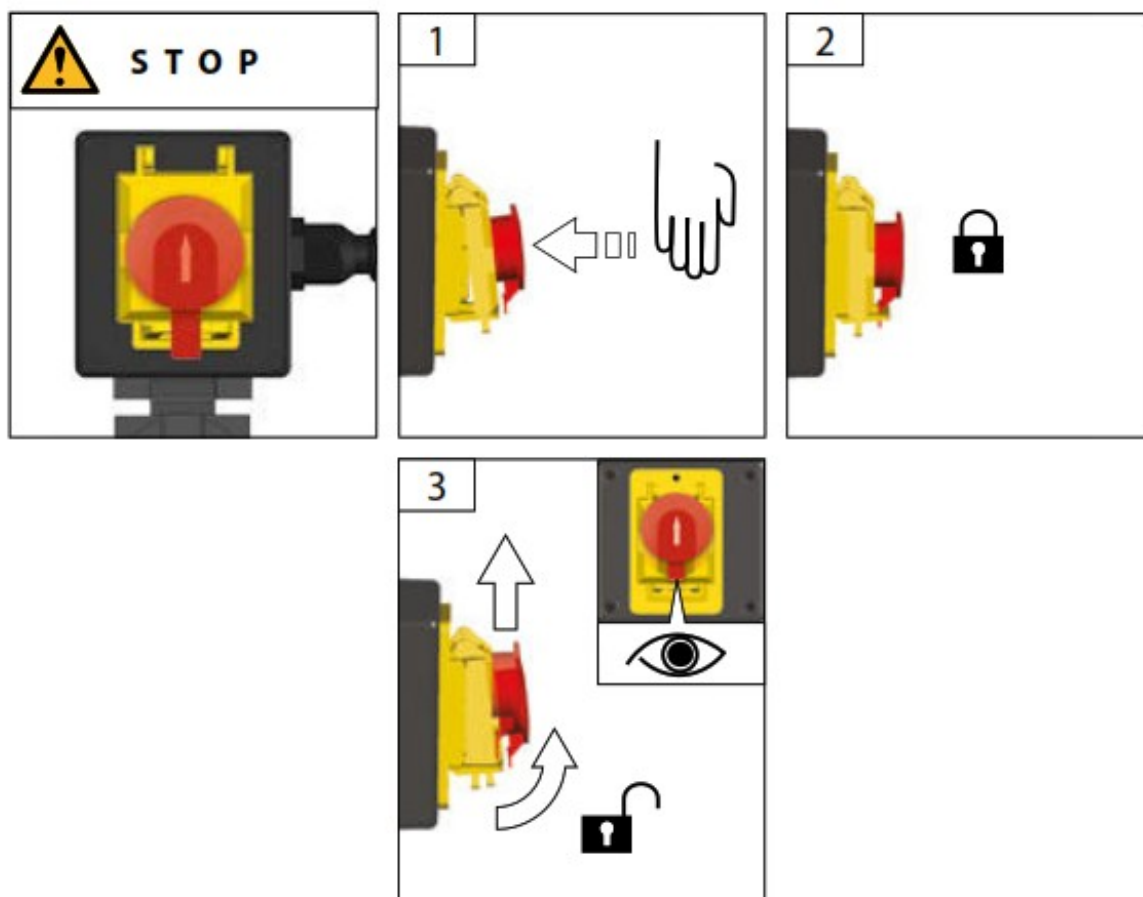
**START**



**STOP**







## Technical Data

Router Table	OFT 855
Art. No	58086
Service connection	230 V ~ 50 Hz
Router diameter max.	22 mm
max. Workpiece dimensions LxWxH in mm	2000x100x55 mm
Weight	6,9 kg
<b>Router:</b>	
Service connection	230 V ~ 50 Hz
Rated input max.	1200 W
Weight max.	2,5 kg





Read and understand the operating instructions before using the appliance. Familiarise with the control elements and how to use the appliance properly. Abide by all the safety measures stated in the service manual. Act responsibly toward third parties.

The operator is responsible for accidents or risks to third parties.

Persons over 16 years of age can only work on the appliance. An exception includes youngsters trained in order to reach knowledge under supervision of the trainer during occupational education.

In case of any doubts about connection and operation refer please to our customer center

## Specified Conditions Of Use

The router table is to be used only in conjunction with a handheld router for milling wood or wood-like materials.

### Router:

Service connection	230 V ~ 50 Hz
Rated input max.	1200 W
Weight max.	2,5 kg







**WARNING!** Using other electric power tools can be dangerous.

Do not use this product in any other way as stated for normal use. Not observing general regulations in force and instructions from this manual does not make the manufacturer liable for damages.

## Emergency procedure

Conduct a first-aid procedure adequate to the injury and summon qualified medical attendance as quickly as possible. Protect the injured person from further harm and calm them down. If you seek help, state the following pieces of information: 1. Accident site, 2. Accident type, 3. Number of injured persons, 4. Injury type(s)

## Symbols

	WARNING / CAUTION!
	Read the operating instructions to reduce the risk of injury.
	Unplug the machine before any work on it.
	Wear eye-protective goggles ! Wear ear protectors!
	The dust produced when using this tool may be harmful to health. Do not inhale the dust. Use a dust absorption system and wear a suitable dust protection mask. Remove deposited dust thoroughly, e.g. with a vacuum cleaner.
	Keep body parts and clothes away from rotating parts of the device.





Only move the workpiece in counter-rotation to cutter (only work oppositely oriented)! For security, use devices such as safety- and pressure device, guide slide, rip fence, etc.



CE marking



Any damaged or disposed electric or electronic devices must be delivered to appropriate collection centres.

### General safety instructions for mounting fixtures



**WARNING** Read all safety instructions and directions supplied with the mounting fixture or power tool. Failure to follow the warnings and instructions may result in electric shock, fire, and/or serious injury.

**Save all warnings and instructions for future reference.**

**Disconnect the plug from the socket and/or remove the battery before adjusting the equipment or replacing accessories.** Some accidents are caused by power tools starting up unintentionally.

**Before assembling the power tool, install the mounting device properly.** Correct assembly is important in order to avoid the risk of collapsing.

**Fasten the power tool securely to the mounting fixture before using it.** If the power tool slips on the mounting fixture, this can lead to a loss of control.

**Place the mounting fixture on a firm, level, and horizontal surface.** If the mounting fixture is unstable, the power tool cannot be steered smoothly and safely.

**Do not overload the mounting fixture and do not use it as a ladder or scaffolding.** Overloading or standing on the mounting fixture can cause the centre of gravity of the mounting fixture to move upwards and cause it to tip over.

### Additional Safety and Working Instructions

**Be sure to pay attention to the operating instructions for the attached router.**

Always use the appropriate table feed rings relevant to the size of the milling tool.

Use protective equipment. Always wear safety glasses when working with the machine. The use of protective clothing is recommended, such as dust mask, protective gloves, sturdy non-slip footwear, and ear defenders.

Wear ear protectors. Exposure to noise can cause hearing loss.

The dust produced when using this tool may be harmful to health. Do not inhale the dust. Use a dust absorption system and wear a suitable dust protection mask.

Remove deposited dust thoroughly, e.g. with a vacuum cleaner.

**Wear tight-fitting gloves at all times when handling sharp blades and saw blades,** Warning against thrown-off items Always wear goggles when using the machine.

Warning against hand injury / bruising Never reach into the danger area of the machine when it is running. Always use the protective shields on the machine.

Chips and splinters must not be removed while the machine is running.

Kickback is the sudden reaction caused by loss of control in guiding small workpieces. Pinching or snagging causes rapid stalling of the rotating wheel which in turn causes the uncontrolled power tool to be forced in the direction opposite of the wheel's rotation at the point of the binding.

Always use horizontal pressure devices when working on narrow workpieces. Uncontrolled tilting of the workpiece



can cause a dangerous situation.

The device must not be used for arc milling.

**Incorrect use of milling tools, workpieces, and devices for workpiece guidance can lead to a dangerous situation.**

The operator must be adequately trained in the handling of the workpiece, the use, adjustment, and operation of workpiece clamping devices and workpiece guiding devices as well as the selection of the milling tools.

**Tools that are not regularly serviced can trigger uncontrollable situations.** Use only sharp, well-serviced milling tools set according to the machine manufacturer's specifications.

**Keep body parts and clothes away from rotating parts of the device.**

Pull the plug out of the socket and/or remove the battery when the tool is not in use before you make machine settings or change accessories, such as the saw blade, drill bit or cutter. This safety measure prevents unintentional starting of the electric tool.

**Keep your hands on the fence during milling.** Use pressing devices (printing shoes) in conjunction with the fence whenever possible. Missing lateral fences can cause kickback. When inserting the milling machine, use the rear and/or front lateral fences attached to the milling fence. The cutter must be correctly clamped in the machine.

Only move the workpiece in counter-rotation to cutter (only work oppositely oriented)! For security, use devices such as safety- and pressure device, guide slide, rip fences, etc. Set the speed to suit the material you wish to cut. Only use tools whose permitted speed is at least as high as the highest no-load speed of the machine. Provide adequate support such as table extensions, saw horses, etc. for a workpiece that is wider or longer than the tabletop.

Put the router back to original position after usage (loosen clamping lever to secure cage).

## Mains Connection



**Operation is only allowed with a safety switch against stray current (RCD max. stray current of 30mA).**

Connect only to single-phase AC system voltage as indicated on the rating plate. It is also possible to connect to sockets without an earthing contact as the design conforms to safety class II.

Only plug-in when machine is switched off.

## Maintenance



**Unplug the machine before any work on it.**

Repairs and works specified in these Instructions may only be performed by qualified authorized staff.

Use only original accessories and original spare parts. Do not clean the plastics with solvents, flammable or toxic fluids. For cleaning, use a damp cloth only. Caution! If the power cord of the appliance gets damaged, it must be replaced by the manufacturer or its customer service or a similarly qualified person to avoid danger. Only a regularly maintained and treated appliance can serve as a satisfactory aid. Insufficient maintenance and care can lead to unforeseen accidents and injuries.

If necessary, a list of spare parts can be found at [www.guede.com](http://www.guede.com).

## Service

Do you have any technical questions? Any claim? Do you need any spare parts or operating instructions? We will quickly help you and without needles bureaucracy



at our web pages at [www.guede.com](http://www.guede.com) in the Servicing part.

Please help us be able to help you. In order to identify your device in case of claim we need the serial No., product No. and year of production. All this data can be found on the type label.

Tel.: +49 (0) 79 04 / 700-360  
Fax: +49 (0) 79 04 / 700-51999  
E-Mail: [support@ts.guede.com](mailto:support@ts.guede.com)

Translation of the EC-Declaration of Conformity We, hereby declare the conception and construction of the below-mentioned appliances correspond – at the type of construction being launched – to appropriate basic safety and hygienic requirements of EC Directives. In case of any change to the appliance not discussed with us the Declaration expires.

**58086 OFT 855**

Directives CE applicables

<input type="checkbox"/> 2014/35/EU <input type="checkbox"/> 1935/2004/EC <input type="checkbox"/> 2011/65/EC ROHS <input type="checkbox"/> 89/686/EEC (PPE) <input checked="" type="checkbox"/> 2006/42/EC <input type="checkbox"/> Annex IV Notified Body Name: Adress:                      No:	<input type="checkbox"/> 2014/30/EU <input type="checkbox"/> 1907/2006/EC <input type="checkbox"/> 2009/142/EC <input type="checkbox"/> 2009/105/EG (...<20.04.2016) <input type="checkbox"/> 2014/29/EU (...>20.04.2016)
-------------------------------------------------------------------------------------------------------------------------------------------------------------------------------------------------------------------------------------------------------------------------------------------------------------------------	---------------------------------------------------------------------------------------------------------------------------------------------------------------------------------------------------------------------------------------

Type Ex. Cert.-No.:

☐ 97/68/EC\_

Emission No.:

☐ 2000/14/EC\_2005/88/EC

Method of compliance assessment

Wolpertshausen, 04/07/2017

Harmonised standards used

EN 60745-1:2009/A11:2010

EN 60745-2-17:2010

Guaranteed sound power level

LWA dB (A)

Measured sound power level

LWA dB (A)



**Helmut Arnold**

Managing Director



**Joachim Bürkle**

GÜDE GmbH & Co. KG, Birkichstraße 6, 74549 Wolpertshausen, Germany  
Authorized to compile the technical file

**GÜDE GmbH & Co. KG**

Birkichstrasse 6, 74549 Wolpertshausen, Deutschland

Tel.: +49-(0)7904/700-0


Fax.: +49-(0)7904/700-250

eMail: [info@guede.com](mailto:info@guede.com)



TN 58086 2017-08

## Documents / Resources

	<p><a href="#">Gude OFT 855 Routing Table</a> [pdf] Instructions OFT 855, Routing Table, Routing, OFT 855, Table</p>
------------------------------------------------------------------------------------	--------------------------------------------------------------------------------------------------------------------------

Manuals+.