



Gude GHS Series Log Splitter Machine Instruction Manual

[Home](#) » [Gude](#) » Gude GHS Series Log Splitter Machine Instruction Manual 



Translation of the original instructions



GHS 370/4TE # 02041



GHS 500/6,5TE # 02048

 GÜDE GmbH & Co. KG

Contents

- 1 GHS Series Log Splitter Machine
- 2 Technical Data
- 3 Safety Instructions
- 4 Operation
- 5 Maintenance
- 6 Disposal
- 7 Symbols
- 8 Guarantee
- 9 Failure removal
- 10 Service
- 11 Documents / Resources
 - 11.1 References
- 12 Related Posts

GHS Series Log Splitter Machine



Please read the instructions carefully before starting the machine.



STARTING-UP THE MACHINE

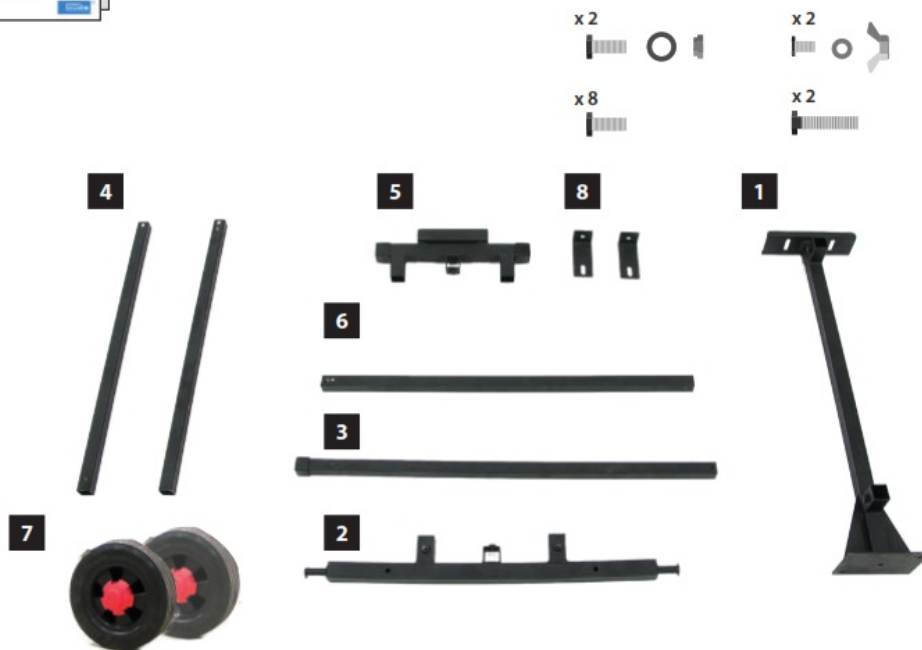


DELIVERED ITEMS



GHS 500/6,5TE

02048

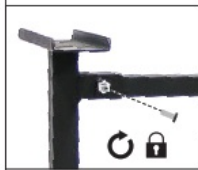


GHS 500/6,5TE
02048

5



6



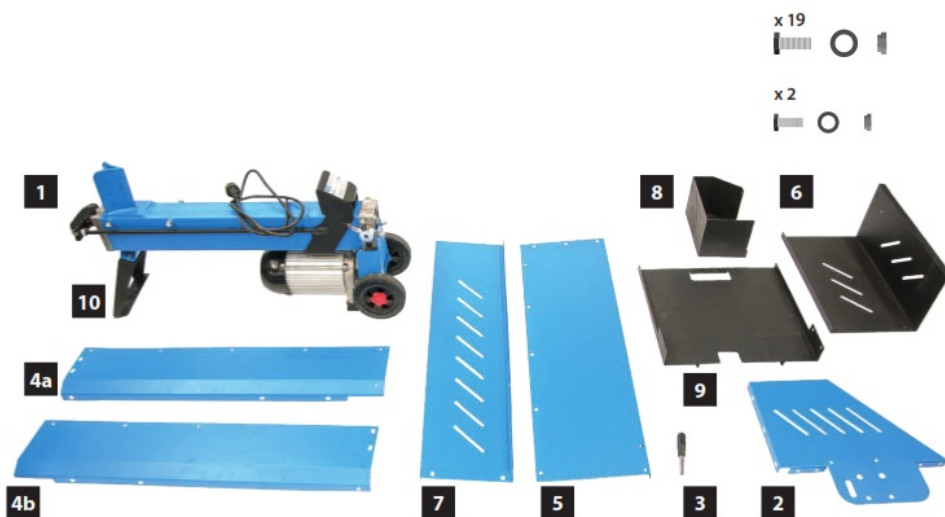


GHS 500/6,5TE

02048

GHS 370/4TE

02041



GHS 500/6,5TE
02048

7



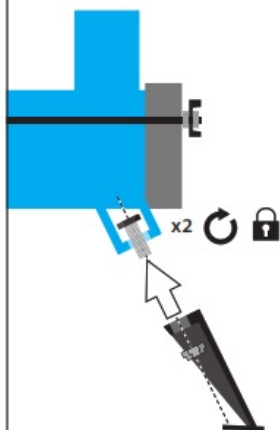
8





GHS 500/6,5TE
02048

1



1



10

9





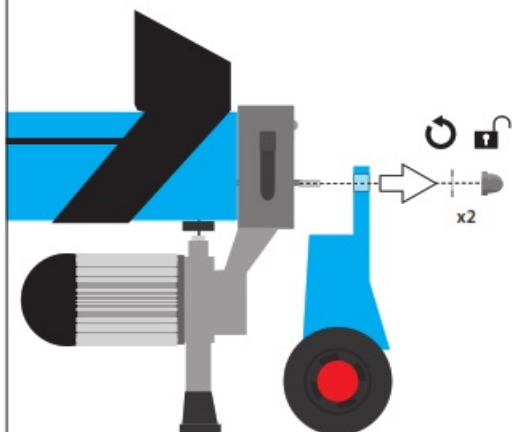
>50 kg



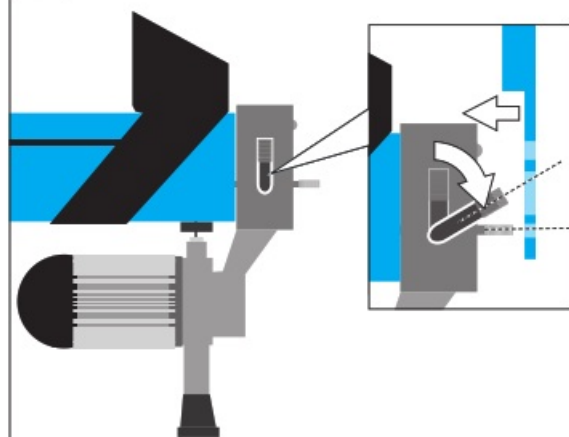
GHS 500/6,5TE

02048

2



3



GHS 500/6,5TE

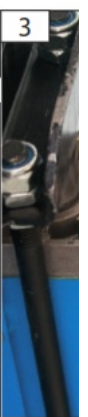
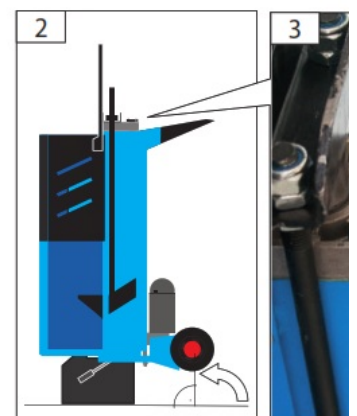
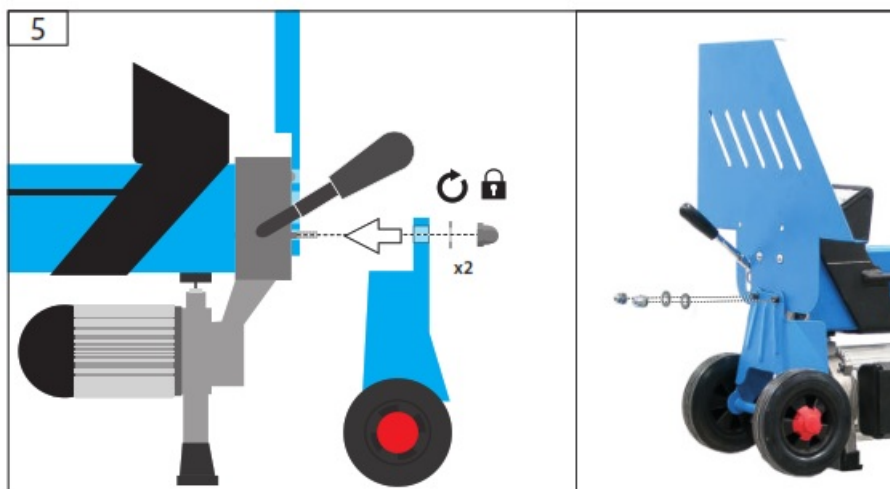
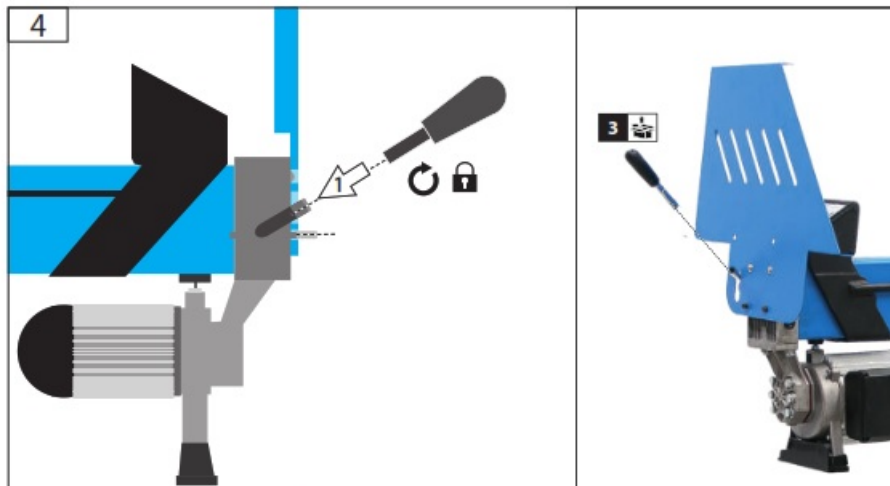
02048

10





GHS 500/6,5TE
02048



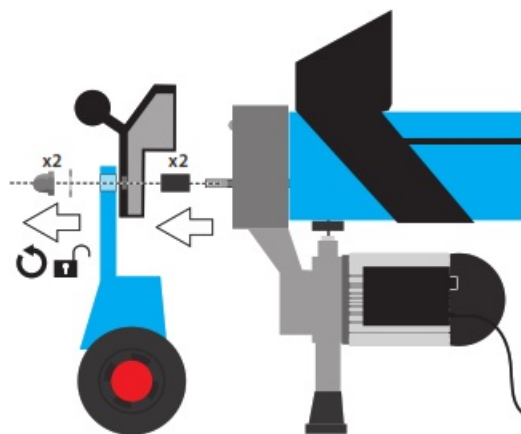


>50 kg

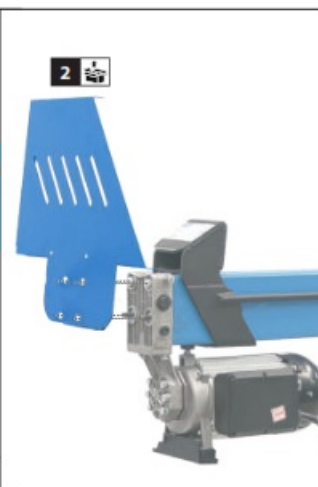
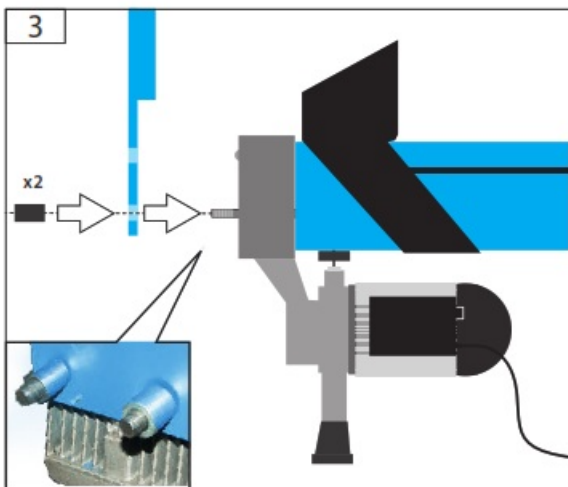


GHS 370/4TE
02041

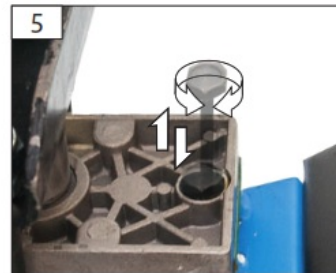
2



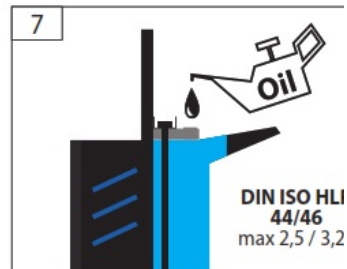
3



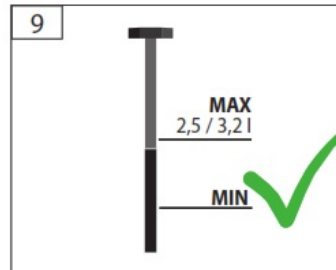
5



7



9

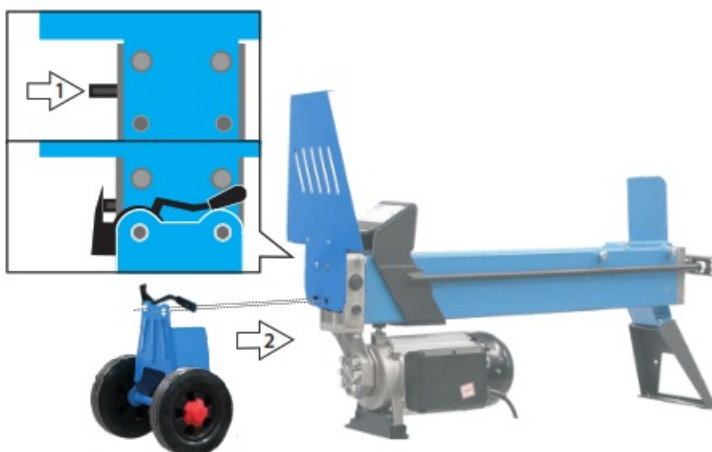



>50 kg

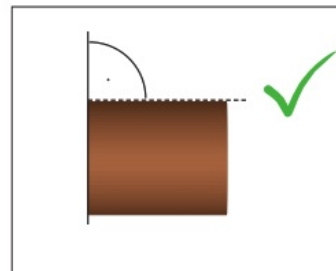
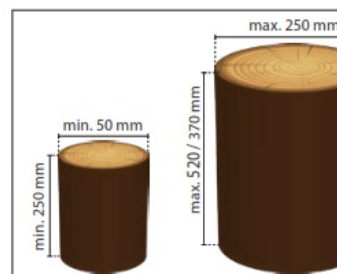
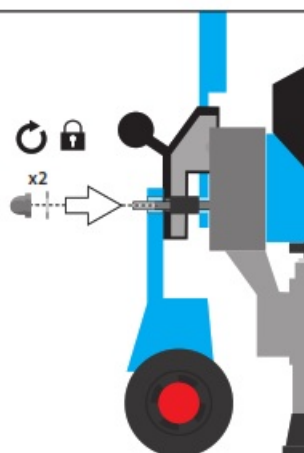


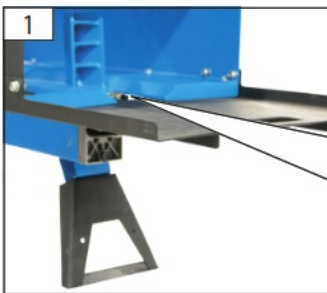
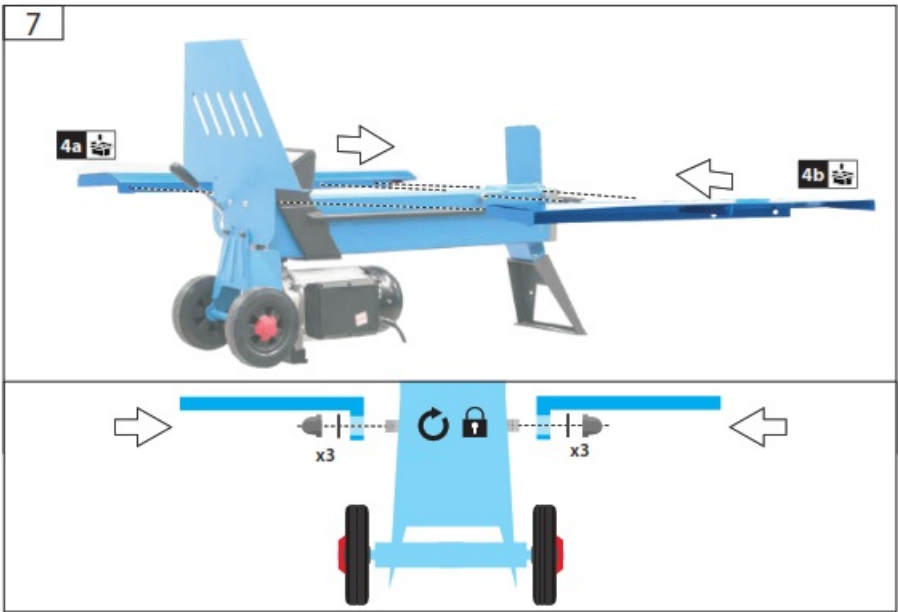
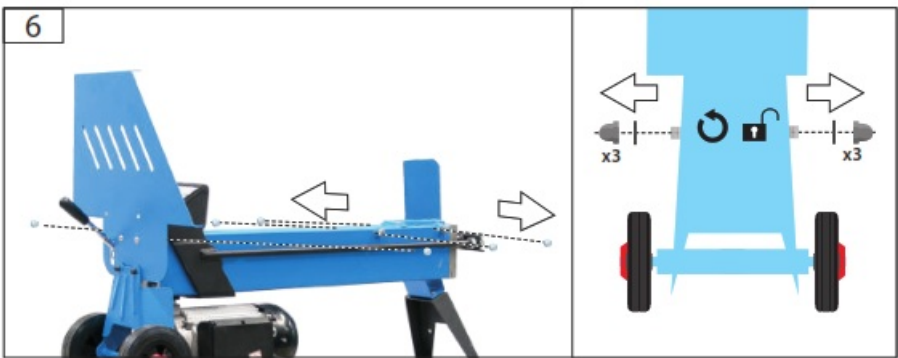
GHS 370/4TE
02041

4



5

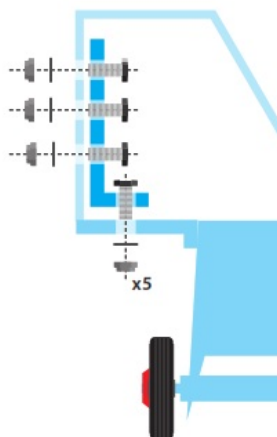






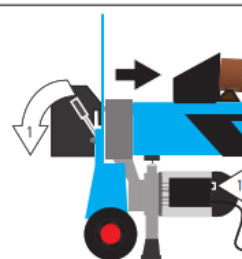
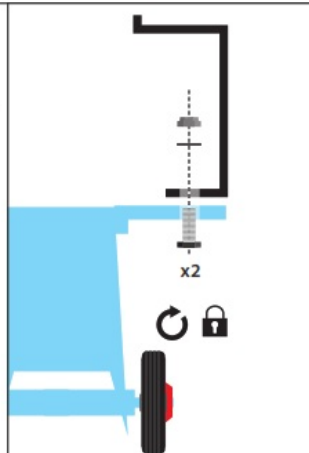
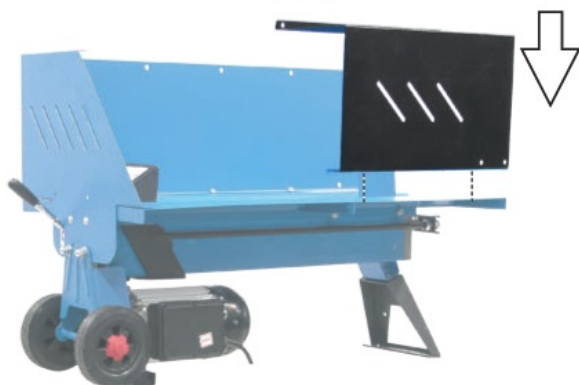
8

5



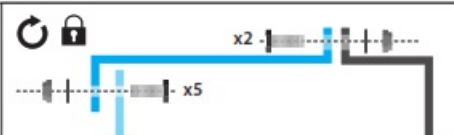
9

6

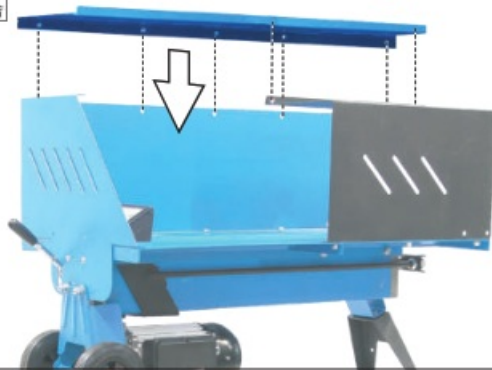




10

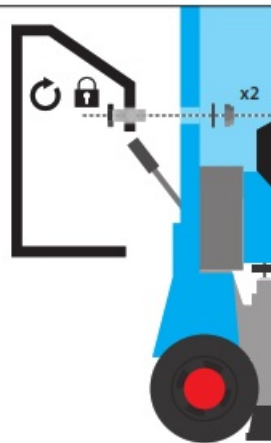
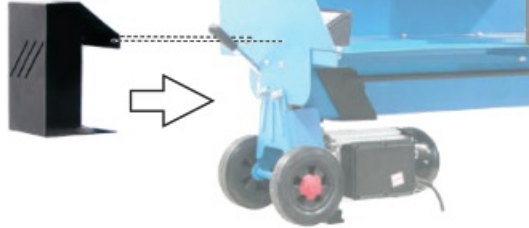


7



11

8



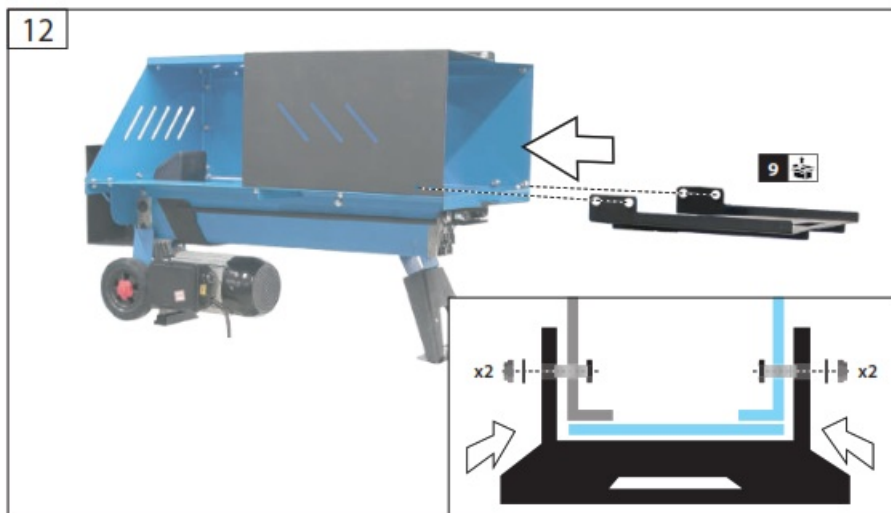
1



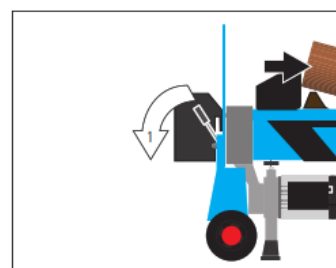
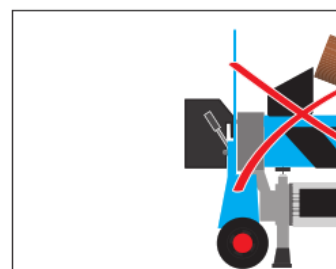
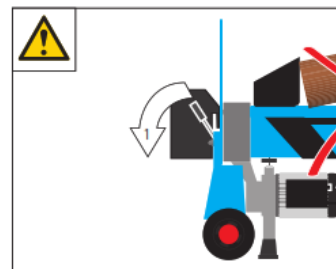
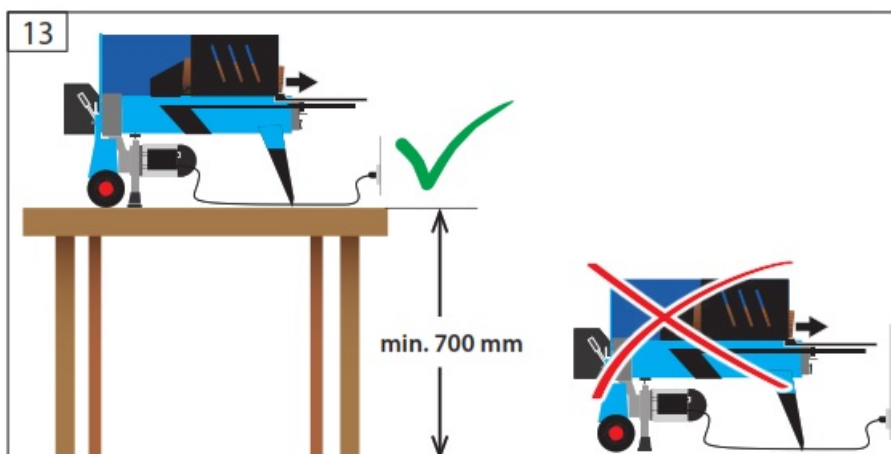
2



12



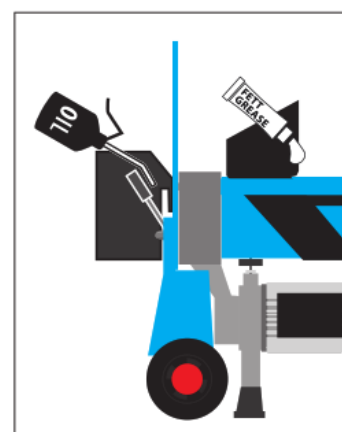
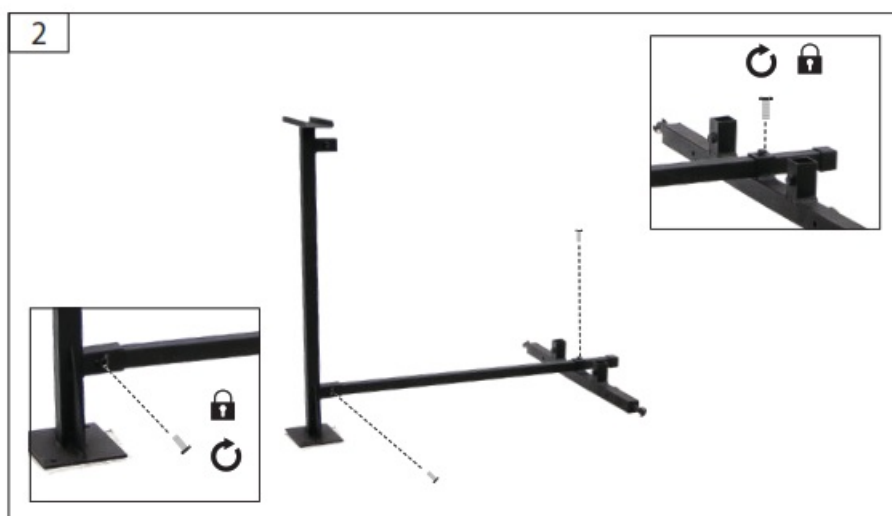
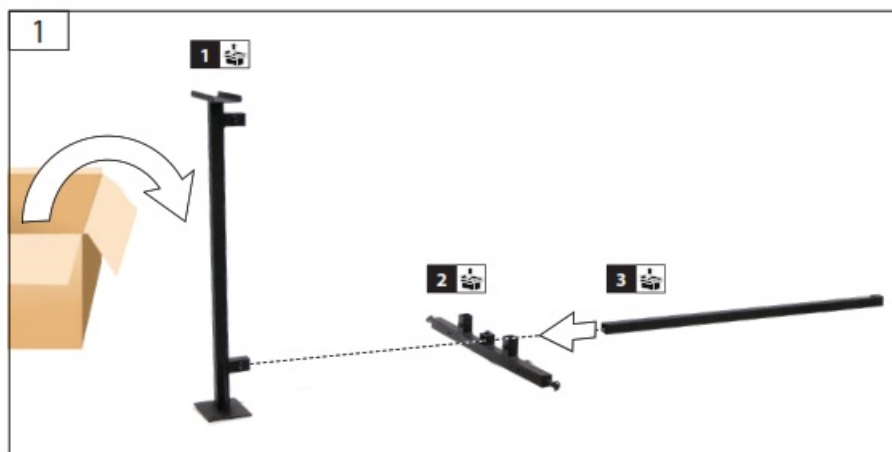
13





GHS 500/6,5TE

02048

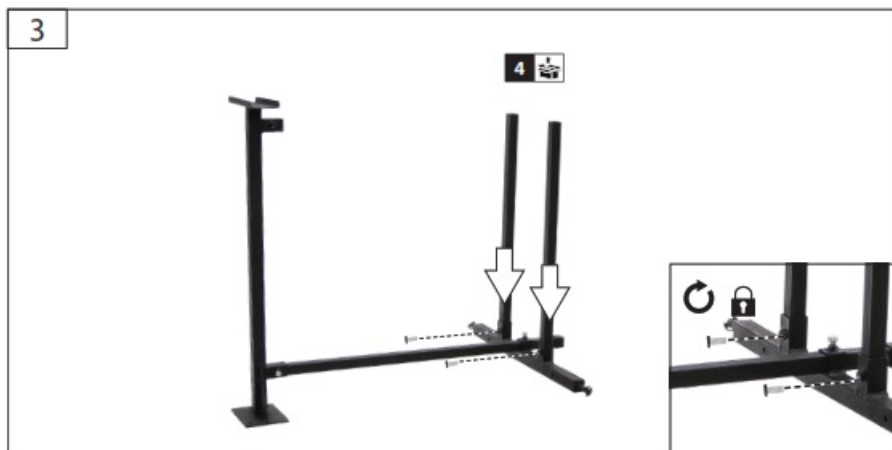




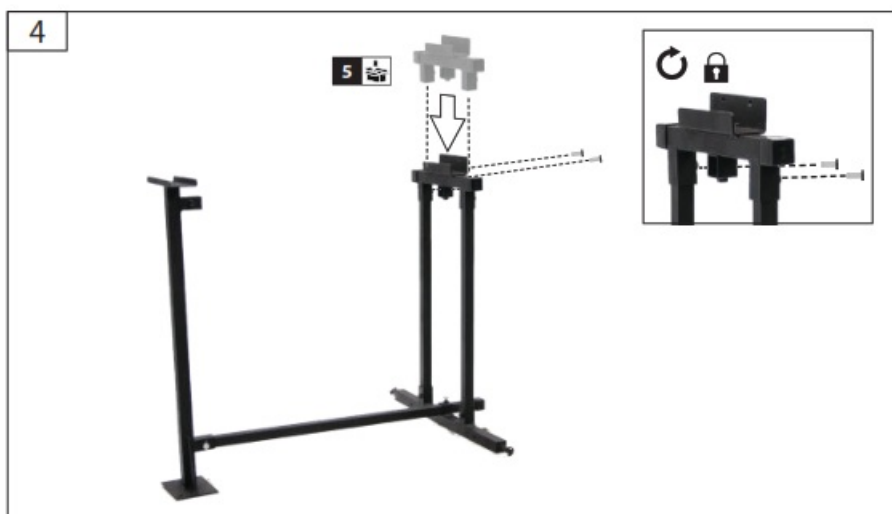
GHS 500/6,5TE

02048

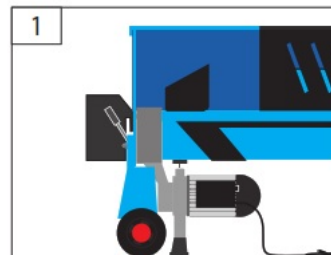
3



4



1



2



Technical Data

Holzspalter	GHS 370/4TE	GHS 500/6,5TE
Art. No	2041	2048
Service connection	230 V / 50 Hz	230 V / 50 Hz
Safety class	F	F
Type of protection	IP 54	IP 54
Rated power	1,5 kW, S3 20%	2,6 kW, S3 20%
No-load speed	2820 min ⁻¹	2820 min ⁻¹
Hydraulics tank (HLP 46)	2,5 l	3,2 l
Max. hydraulic pressure	160 bar	240 bar
Max. splitting uplift	302 mm	390 mm
Max. splitting pressure	4 t	6,5 t
Workpiece length	250 – 370 mm	250 – 520 mm
Workpiece diameter:	50 – 250 mm	50 – 250 mm
Splitting post	80 x 120 mm	80 x 120 mm
Forward speed	0,032 m/s	0,032 m/s
Reverse speed	0,055 m/s	0,065 m/s
LxWxH in mm	1315 x 405 x 620 mm	1470 x 405 x 620mm
Weight	53 kg	71 kg
Sound power level Lwa	86 dB(A)	86 dB(A)



The values stated are emission values and as such do not necessarily constitute values that are safe for the workplace. Although there is a correlation between emission levels and environmental impact levels, whether further precautions are necessary cannot be derived from this. Factors influencing the actual present environmental impact level in the workplace include the characteristics of the work area and other noise sources, i.e. the number of machines and other neighboring work processes. The permitted workplace values can likewise vary from country to country. This information is intended to assist the user in estimating hazards and risks. The S6-40% indicates a load profile of 4 min load and 6 min idle time. Read and understand the operating instructions before using the appliance. Familiarise with the control elements and how to use the appliance properly. Abide by all the safety measures stated in the service manual. Act responsibly toward third parties.

The operator is responsible for accidents or risks to third parties.

Persons over 16 years of age can only work on the appliance. An exception includes youngsters trained in order to reach knowledge under supervision of the trainer during occupational education. In case of any doubts about connection and operation refer please to our customer center.

The operating personnel must be adequately trained in the use, adjustment and operation of the device.

Specified Conditions Of Use

The wood splitter has only been designed to split wood in the fibre direction. Respecting technical data and safety precautions.

The machine may only be used if it is fully assembled.

Operation of a machine that is not fully assembled is strictly prohibited.

The usage of horizontal log splitters without stand is only allowed on a working bench or table with a maximum height of 700 mm.

The device must not be used without the attachment tables.

It is essential to follow instructions for installation, operation, repairs, etc. to prevent hazards and damage.

Please do not forget that this machine, as designed, is not intended for industrial use.

Make sure there are no persons in the working area during operation or make sure such persons keep a sufficient safety distance.

This appliance is not intended for use by children.



The wood splitter has been designed to be operated by 1 person. The machine must never be operated by two or more persons.



Wood splitter being operated by two persons, with one holding a piece of wood and the other controlling the clamps is strictly prohibited.

Do not use this product in any other way as stated for normal use. Not observing general regulations in force and instructions from this manual does not make the manufacturer liable for damages.

Residual risks



Dry and dried-up wood may jump up when being split and injure the face of the operator. Adequate protective clothes to be worn!



Wooden pieces produced during splitting may fall down and injure legs of the operator. When splitting wood, parts of body may be crushed or separated due to hydraulic knife lowering.



There is a risk of branchy wood getting stuck when being split. Please be advised that wood being separated is under heavy pressure and your fingers may get squeezed in the gap.



Caution! Pieces of wood cut at the right angle to be split only! Diagonally cut pieces of wood may slip when cutting!

General Power Tool Safety Warnings



WARNING Read all safety warnings and all instructions. Failure to follow the warnings and instructions may result in electric shock, fire and/or serious injury.

Save all warnings and instructions for future reference.

The term „power tool“ in the warnings refers to your mains-operated (corded) power tool or battery-operated (cordless) power tool.

1) Safety in the place of work

a) Keep work area clean and well-lit. Cluttered or dark areas invite accidents.

b) Do not operate power tools in explosive atmospheres, such as in the presence of flammable liquids, gases or dust. Power tools create sparks that may ignite dust or fumes.

c) Keep children and bystanders away while operating a power tool. Distractions can cause you to lose control.

3. Electrical safety

a) Power tool plugs must match the outlet. Never modify the plug in any way. Do not use any adapter plugs with earthed (grounded) power tools. Unmodified plugs and matching outlets will reduce risk of electric shock.

b) Avoid body contact with earthed or grounded surfaces, such as pipes, radiators, ranges and refrigerators. There is an increased risk of electric shock if your body is earthed or grounded.

c) Do not expose power tools to rain or wet conditions. Water entering a power tool will increase the risk of electric shock.

d) Do not abuse the cord. Never use the cord for carrying, pulling or unplugging the power tool. Keep cord away from heat, oil, sharp edges or moving parts. Damaged or entangled cords increase the risk of electric shock.

e) When operating a power tool outdoors, use an extension cord suitable for outdoor use. Use of a cord suitable for outdoor use reduces the risk of electric shock.

f) If operating a power tool in a damp location is unavoidable, use a residual current device (protected supply). Use of an RCD reduces the risk of electric shock.

3) Safety of persons

a) Stay alert, watch what you are doing and use common sense when operating a power tool. Do not use a power tool while you are tired or under the influence of drugs, alcohol or medication. A moment of inattention while

operating power tools may result in serious personal injury.

- b) Use personal protective equipment. Always wear eye protection. Protective equipment such as dust masks, non-skid safety shoes, hard hat, or hearing protection used for appropriate conditions will reduce personal injuries.
- c) Prevent unintentional starting. Ensure the switch is in the off-position before connecting to power source and/or battery pack, picking up or carrying the tool. Carrying power tools with your finger on the switch or energizing power tools that have the switch on invites accidents.
- d) Remove any adjusting key or wrench before turning the power tool on. A wrench or a key left attached to a rotating part of the power tool may result in personal injury.
- e) Do not overreach. Keep proper footing and balance at all times. This enables better control of the power tool in unexpected situations.
- f) Dress properly. Do not wear loose clothing or jewellery. Keep your hair, clothing and gloves away from moving parts. Loose clothes, jewelry or long hair can be caught in moving parts.
- g) If devices are provided for the connection of dust extraction and collection facilities, ensure these are connected and properly used. Use of dust collection can reduce dust-related hazards.

4. Use and treatment of electric tools

- a) Do not force the power tool. Use the correct power tool for your application. The correct power tool will do the job better and safer at the rate for which it was designed.
- b) Do not use the power tool if the switch does not turn it on and off. Any power tool that cannot be controlled with the switch is dangerous and must be repaired.
- c) Disconnect the plug from the power source and/or the battery pack from the power tool before making any adjustments, changing accessories, or storing power tools. Such preventive safety measures reduce the risk of starting the power tool accidentally.
- d) Store idle power tools out of the reach of children and do not allow persons unfamiliar with the power tool or these instructions to operate the power tool. Power tools are dangerous in the hands of untrained users.
- e) Maintain power tools. Check for misalignment or binding of moving parts, breakage of parts, and any other condition that may affect the power tool's operation. If damaged, have the power tool repaired before use. Many accidents are caused by poorly maintained power tools.
- f) Keep cutting tools sharp and clean. Properly maintained cutting tools with sharp cutting edges are less likely to bind and are easier to control.
- g) Use the power tool, accessories and tool bits etc. in accordance with these instructions, taking into account the working conditions and the work to be performed. Use of the power tool for operations different from those intended could result in a hazardous situation.

5. Service

- a) Have your power tool serviced by a qualified repair person using only identical replacement parts. This will ensure that the safety of the power tool is maintained.

Safety Instructions

Using the wood splitter may lead to some hazards.

Therefore, the machine may only be handled by instructed and experienced persons.

Wear suitable protective clothing such as sturdy shoes with a non-slip sole, robust long trousers, gloves, safety glasses and hearing protection! Do not wear loose clothing or jewels. Hair, clothing and gloves must be out of reach of moving parts as they could get caught by the rotating parts. Do not use the appliance when barefoot or in open sandals. In the event of a blockage, switch off the machine immediately. Disconnect the power plug and remove the jammed piece of wood.

Mains Connection

WARNING! Electric shock! There is a risk of an injury caused by electric shock!

RESISTANT AGAINST DELAMINATION

Operation is only allowed with a safety switch against stray current (RCD max. stray current of 30mA).

Check the voltage. Technical data given on the type label must correspond with the electric network voltage. Insert the plug of the electrical cable in a socket of suitable shape, voltage and frequency complying with current regulations.

RESISTANT AGAINST DELAMINATION

Pursuant to the provisions of „CE“ professional associations, etc., all splitters are fitted with an Undervoltage release in the switch. This will prevent accidental repeated starting in case of current interruption due to power

failure, accidental unplugging, defective fuse, etc. The machine must necessarily be turned on again by repeated pressing of the green switch. Wilful holding or blocking of the switch, unless neutral, will automatically lead to switching failure. The warranty will not apply in such a case that must naturally be checked. Work preparation Before putting the machine into operation, the working of the safety guards (two-lever operation system, in particular) must be checked.

Carry out a visual inspection before switching the appliance on.

- Proper function of the on and off buttons, incl. the emergency switch.
- Before starting work, check hydraulic lines and hoses for leaks.
- • Check especially the safety equipment, electrical control elements, power lines and screw couplings for any damage and if they are tightened appropriately. The appliance must not be used if damaged or safety equipment is defective. Replace any worn-out and damaged parts.

Working area

For safe wood splitting, it is essential that the working area is flat and slip-resistant and that sufficient space for moving is provided. To take the wood splitter to your home, it is necessary there are no obstacles in the way, i.e. no risk of tripping. Adequate lighting of the working area needs to be provided. When being operated, the machine must stand on a horizontal and flat surface and the floor around the machine must be flat, well-maintained and with no waste, such as sawdust and cuttings. Operation

STRUCTURE OF THE SERIAL –
CURRENT PRODUCTION YEAR

Operation



Open the air vent screw!

When splitting intergrown wood, trunk sections of irregular shape, etc., there may be risks of parts being thrown out, blocked or crushed. Never reach into the gap area. Power supply must be interrupted by pressing the red button on the switch and unplugging the machine for any repair or servicing work or when leaving the wood splitter. Turning to the Off position is not enough to interrupt the power supply. Handling equipment to be used only when handling the machine. Make sure the device cannot roll away, fall over or tip over with suitable fastening devices. The machine must be secured to the ground with suitable fasteners. (e.g. ground nails) The machine may only be used if it is fully assembled. Operation of a machine that is not fully assembled is strictly prohibited.

Emergency procedure

Conduct a first-aid procedure adequate to the injury and summon qualified medical attendance as quickly as possible. Protect the injured person from further harm and calm them down. If you seek help, state the following pieces of information:

1. The accident site,
2. Accident type,
3. A number of injured persons,
4. Injury type(s)

Maintenance



Unplug the machine before any work on it. Switch off the apparatus, disconnect it from the mains by unplugging and allow it to cool down before setting up, retrofitting, cleaning, performing maintenance, storing or transporting the apparatus. The hydraulic hoses and connections must be checked if tight enough after app. 4 hours of operation and tightened if necessary.











If the device is defective, the repair has to be made exclusively by customer service. Use only original accessories and original spare parts. If necessary, a list of spare parts can be found at www.guede.com. Never clean the



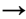



machine and its components with solvents, flammable or toxic liquids. Use only a damp cloth for cleaning. Only a regularly maintained and treated appliance can serve as a satisfactory aid. Insufficient maintenance and care can lead to unforeseen accidents and injuries.

Disposal

Any damaged or disposed devices must be delivered to appropriate collection centers. The device contains hydraulic fluid. Hydraulic fluids pose a hazard to groundwater. Uncontrolled draining or improper disposal is punishable by law.

Symbols

	CAUTION! WARNING
	WARNING! Read the Operating Instructions
	Caution! Unplug the machine before any servicing or repair!
	Wear eye protective goggles ! Wear ear protectors!
	Safety gloves to be used!
	Wear safety shoes with steel reinforcement!
	Use of crane
	Caution! Moving parts of the machine! Danger! Keep away from moving machine parts!
	To be operated by 1 person only!
	Do not touch in the splitting area!
	Protect against humidity. Never expose tool to rain.
	Remove all undesirable items, e.g. nails and wire, before working
	Dangerous voltage

	Warning against hand injuries
	Warning against thrown-off items Keep distance of persons Observe to keep out of the dangerous zone
	Rotation direction
	2 people are needed for implementation.
	Any damaged or disposed devices must be delivered to appropriate collection centers.
	Open the air vent screw!

Guarantee

The warranty period of 12 months applies to commercial use and 24 months applies to private use and commences on the day of purchase of the device. Warranty applies exclusively to failures due to defective material or workmanship. An original sale slip with an indication of date of sale must be presented in case of claiming for the warranty rights. The warranty does not cover unprofessional use such as device overload, violent use, damage caused by third parties or foreign materials, failure to comply with operations and assembly manual, and normal wear and tear.

Failure removal

Failures	Causes	Removal
The engine does not start	No power in the socket	Check the fuse
	Defective electric extension cable	Pull the plug out, check it, replace it
	Wrong connecting cable	5-wire connection at 2.5 mm ² cross-section
	Defective condenser switch	Have the machine checked by a professional electrician
Splitting knife is not moving	Adjust the two-hand control and starting levers	Defective control valve – to be replaced in a service centre only
	Few hydraulic oil	Hydraulic oil to be added
	Trigger is bent; the hydraulic piston on the valve is not fully seated	Check all screws on the trigger Adjust the trigger so that the hydraulic piston on the valve is fully seated
	Wood has many knobs and the splitting knife is getting stuck	Lubricate the splitting knife
The hydraulic pump is whistling, splitting knife running jerkily	Oil loss, bottom contamination	Tighten the screws Replace the hose
	Few hydraulic oil	Hydraulic oil to be added

Important information for the customer

Please be sure to know that returning the product in or after the warranty period must be made in the original packaging.

Service

Do you have any technical questions? Any claim? Do you need any spare parts or operating instructions? We will quickly help you and without needless

bureaucracy at our web pages at www.guede.com in the Servicing part. Please help us be able to help you. In order to identify your device in case of claim we need the serial No., product No. and year of production.

All This data can be found on the type label.



Translation of the EC-Declaration of Conformity

We, hereby declare the conception and construction of the below-mentioned appliances correspond – at the type of construction being launched – to the appropriate basic safety and hygienic requirements of EC Directives. In case of any change to the appliance not discussed with us the Declaration expires.

Log splitte



#2041 #2048 GHS 370/4TE ; GHS 500/6,5TE

<input type="checkbox"/>	2014/35/EU	x	2014/30/EU
<input type="checkbox"/>	1935/2004/EC	<input type="checkbox"/>	1907/2006/EC
x	2011/65/EC ROHS	<input type="checkbox"/>	2016/426/EU
<input type="checkbox"/>	89/686/EEC (PPE)	<input type="checkbox"/>	2014/29/EU
x	2006/42/EC	<input type="checkbox"/>	2015/1188/EU

<p><input type="checkbox"/> Annex IV Notified Body Name:..... Address:..... No:..... 97/68/EC_ & 2016/1628/EU Emission No.: 2000/14/EC_2005/88/EC</p> <p>Method of compliance assessment  Wolpertshausen, 25/05/2018 Harmonized standards used</p>	<p>EN 609-1:2017 EN 60204-1:2006+A1:2009+AC:2010 EN 55014-1:2006+A1+A2 EN 55014-2:1997+A1+A2 EN 61000-3-2:2014 EN 61000-3-3:2013 Guaranteed sound power level</p> <p> Measured sound power levelM Authorized to compile the technical file</p>
--	--

GÜDE GmbH & Co. KG
Birkichstrasse 6 74549 Wolpertshausen Deutschland
Tel.: +49-(0)7904/700-0
Fax.: +49-(0)7904/700-250
eMail: info@guede.com
Tel.: +49 (0) 79 04 / 700-360
Fax: +49 (0) 79 04 / 700-51999
E-Mail: support@ts.guede.com
02041, 02048 | 2020-01-28

Documents / Resources

	<p>Gude GHS Series Log Splitter Machine [pdf] Instruction Manual GHS 370 4TE, 02041, GHS 500 6 5TE, 02048, GHS Series Log Splitter Machine, GHS Series, Log Splitter Machine, Splitter Machine, Log Machine, Log Splitter</p>
	<p>Gude GHS Series Log Splitter [pdf] Instructions GHS 1100, GHS 25TEZ-A, GHS Series Log Splitter, GHS Series, Log Splitter, Splitter</p>

References

- [GÜDE Home](#)
- [GÜDE Home](#)