



# GuardforceA PR1120B008F6 AI Reception Robot User Manual

[Home](#) » [GuardforceA](#) » GuardforceA PR1120B008F6 AI Reception Robot User Manual 

## Contents

- [1 GuardforceA PR1120B008F6 AI Reception Robot](#)
- [2 product introduction](#)
- [3 Function Introduction](#)
- [4 FCC](#)
- [5 Documents / Resources](#)
- [6 Related Posts](#)

# ***Guardforce***

**GuardforceA PR1120B008F6 AI Reception Robot**



## product introduction

AI Reception Robot is an indoor intelligent service robot used in office buildings, restaurants, hotels, hospitals, exhibition halls, shopping malls and other places. It can provide contactless temperature measurement, voice interaction, information release and other services, which can improve the service efficiency and safety management and reduce the overall service cost for clients.

1.1 Product Functions		
Module	Function	Introduction
Attraction	Solicitation spare time	When the robot does not interact with each other, the solicitation once, audio file or animation is displayed for solicitation.
	Advertising	Configure advertisements in video and picture formats on the platform for rotation.
Temperature measurement	Body temperature measurement	After recognizing the face, perform body temperature detection and broadcast the detection result.
	Minimum temperature setting	The minimum temperature can be set, the default is 36°C, and (0.1 - 0.3) will be increased a random fit is lower than 36°C.
Broadcasting	Normal body temperature will not be broadcasted	This function is used for temperature measurement. It is enabled by default and cannot be disabled. Normal temperature will not be broadcasted.
	Abnormal temperature broadcast	This function is used to broadcast the abnormal body temperature of the users. It is enabled by default and cannot be disabled. Abnormal temperature will be broadcasted.
Mask	Mask reminder	When no mask is detected, the visitor will be reminded of wearing mask by the voice and interface.
Robot wakeup	Touch screen wakeup	Click Wakeup button to wake up.

Reception	Greetings	When someone approaches the robot about 1.5 meters, the robot will broadcast the greetings.
Merchant introduction	Merchant introduction	Merchant introduction.
Consultation service	Consultation service	It is used to answer questions that users will consult in various scenes. The user can configure Q&A services and consulting services the GFALL CP Robot Operation & Management Platform to provide intelligent consulting and answering services for users.
Information display	Content/product/commodity introduction	It is used to introduce the content in various scenes, such as the dining menu, the room type of the hotel, and the exhibits in the exhibition hall, etc., by means of pictures, videos and text.

1 .2 Scene Application		
Dining module	Recommendation	It is used for cuisine and activity recommendation in the dining scene.
	Menu	It is used for menu display and cuisine query in the dining scene.
	Query	Query It is used for FAQ query in the dining scene.
	Activity	It is used for cuisine and activity recommendations in the dining scene.

## Function Introduction

### Power-on/off

#### Power-on

Note the following points before power-on:

1. Please ensure that 4G signal or WIFI signal of the robot is normal and stable and can access the Internet before power-on.
2. Please make sure the power supply of the robot is normal before power-on.



Figure2-1

Short press Power button and release it when a beep sound is made. The button light is on, the robot is powered on, and the screen displays the start up picture (left picture below), the main page of the robot is started, and the robot enters the temperature measurement interface by default (right picture below), indicating that the soft start up is successful.



Figure2-2

### Power-off

Hold down Power button and release it until three long beep sare made. When the button light is off and the screen isoff, the soft power-off of the robot is successful.



Figure2-3

After soft power-off, some hardware inside the robot still works normally. If you want to completely power off the robot, please unplug the power cord for hard power-off after softpower-off.  
Note the following points afterpower-off:

1. Place the robot in the designated safe position and cut off the powersupply.
2. Protect the robot and ensure that the robot is kept in a dry and clean environment..

### Network Configuration

Enter the [main interface] of the robot, click the redbox button as shown in Figure2-4 below, enter [Settings], enable WIFI, find the corresponding WIFI name in the WIFI list, and enter the password to connect. After the connection is successful, "Connected" is displayed under the WIFI name.

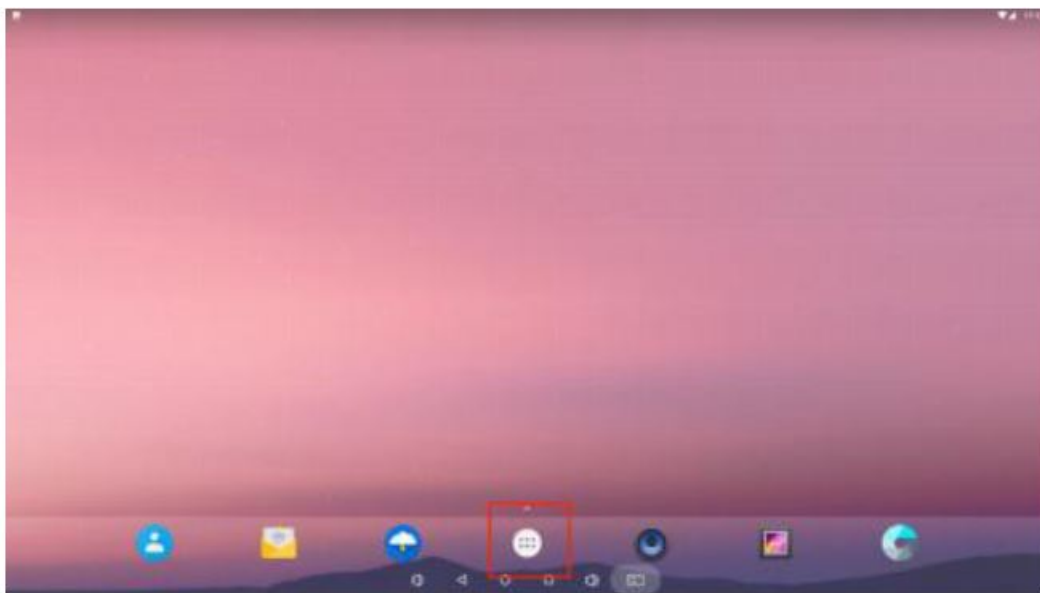


Figure2-4

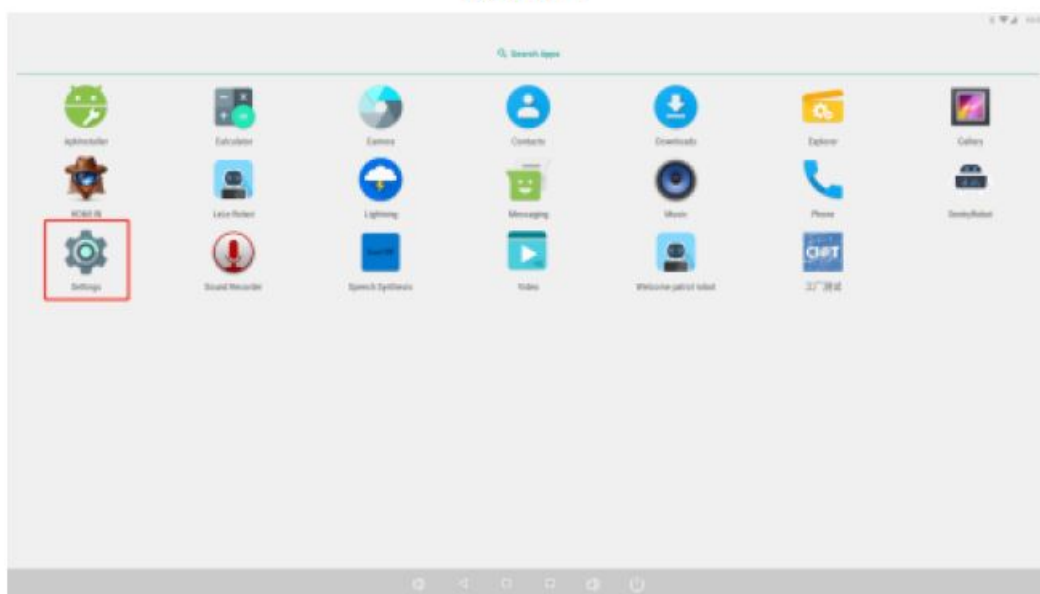


Figure2-5

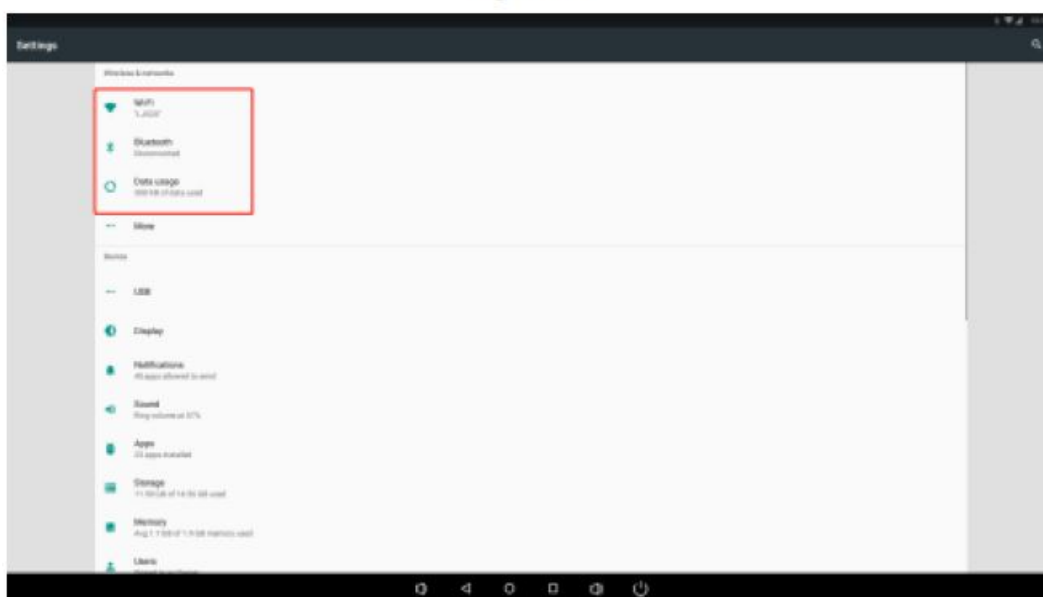


Figure2-6

## Product Configuration

In order to ensure the normal use of the intelligent reception robot APP, therelevant configuration shall be

completed. The configuration consists of two parts:

1. Configuration of Human-machine Collaboration Comprehensive Service Platform
2. Robot Configuration

GFAIICP Robot Operation & Management Platform Client Human-machine Collaboration Comprehensive Service Platform is mainly used to view the temperature measurement and the access data and configure here commendation, menu, activity, consulting service and other information of the robot. For the operation and configuration of the platform, please refer to Guide for Configuration of Human-machine Collaboration Service Platform (Catering).



Figure2-7

### Robot Configuration

Open [Intelligent Reception Robot] APP, click [StatusBar] of [MainInterface] for 8 times consecutively, as shown in Figure2-8, enter the password ciot2020, and enter [Settings] interface as shown in Figure 2-9-1.

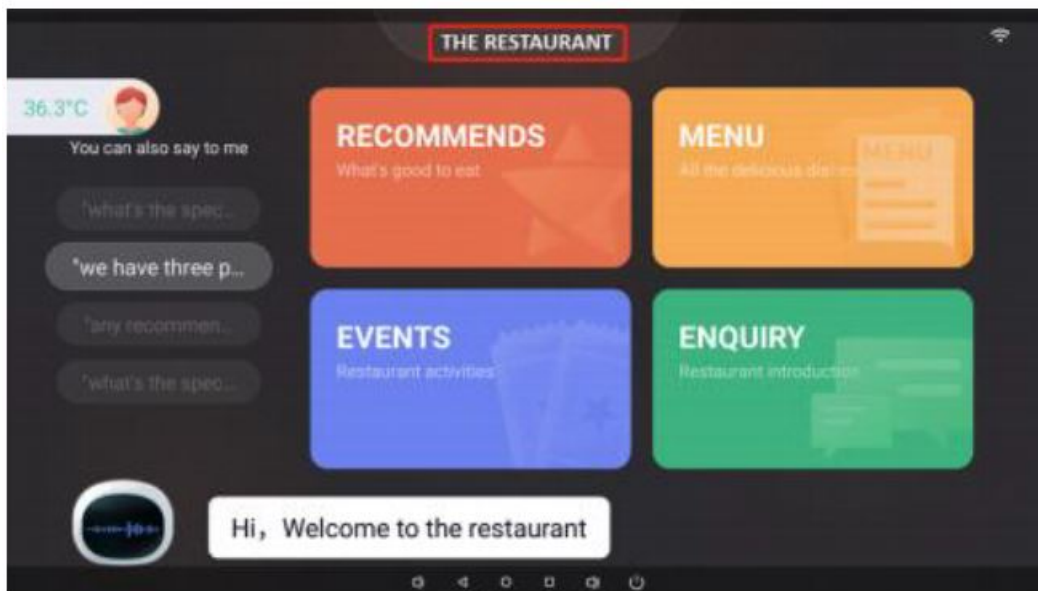


Figure2-8

#### 1. AboutDevice

**Device number:** The robot number can not be modified , otherwise the cloud service of the robot cannot be used.

**Front gateway:** Cloud server gateway address. It is the production server by default. It is not recommended to change the address, otherwise the robot cannot be connected to the server.

**Semantic server:** Semantic server address.It is the production server by default. It is not recommended to change the address, otherwise the robot cannot be connected to this mantic-server.

**Software version:** The name of the current robot application software version. It is recommended to update to the latest version in time for better application experience.

**ICCID:** The identification number of the their card, which is used as the unique identifier of the IoT card.

**Operator:** Network operator that displays the IoT card.

**Trafficused:** Traffic data used in this month

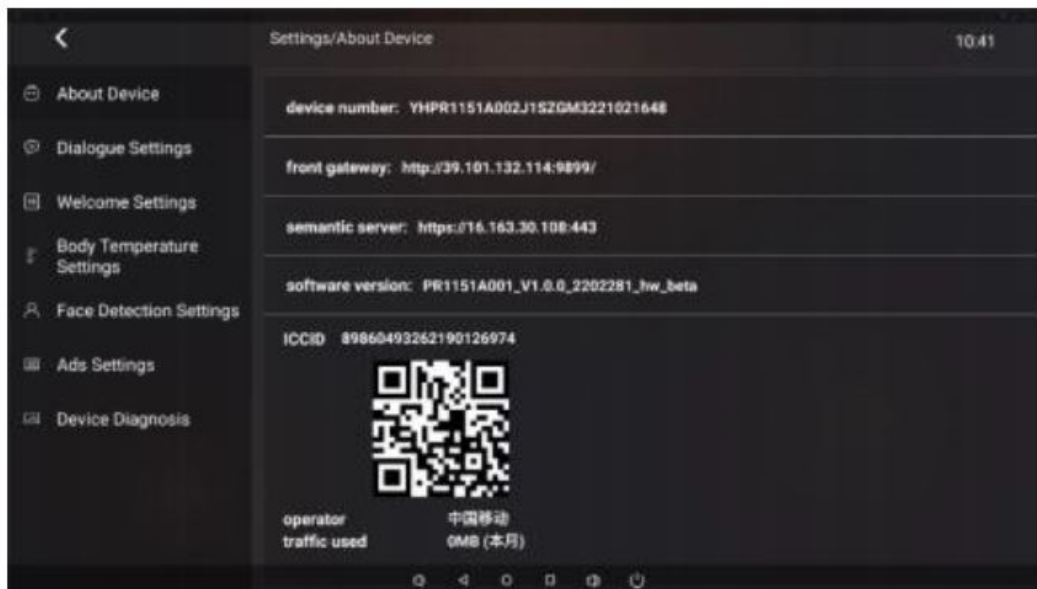


Figure2-9-1

## 2. Dialogue Settings

**Dialog window lock:** The mode of entering the [Settings] interface, which is disabled by default. When it is enable ,it is necessary to enter the administrator password to enter the [Settings] interface; When it is disabled, you only need to continuously click the status bar for 8 times to enter the [Settings] interface.

Whether to display virtual button navigation bar: it is used to display and hide the virtual navigation bar displayed by sliding up and down on the system. When this function is enabled, the navigation bar is displayed; when the function is disabled, the navigation bar is hidden.

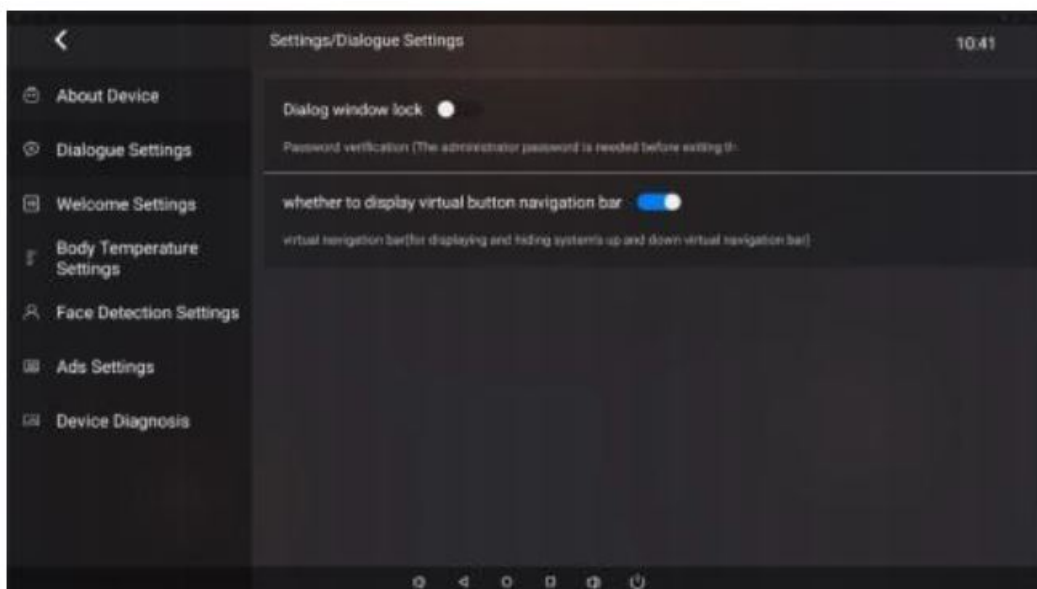


Figure2-9-2

## 3. WelcomeSettings

**Welcome Settings:** it is used to set the greetings. When the robot detect saface, it can broad cast the



greetings. To broadcast the greetings according to the identity of the identified person, go to [LinkG Cloud Human-machine Collaboration Comprehensive Service Platform][Solicitation Reception] to set.

**Broadcast in spare time:** switch for controlling the broadcast of the robot in spare time. When it is enabled, the robot will broadcast in spare time; when it is disabled, the robot will not broadcast in spare time.

**MediaVolume:** it is used to set the system volume of the robot.

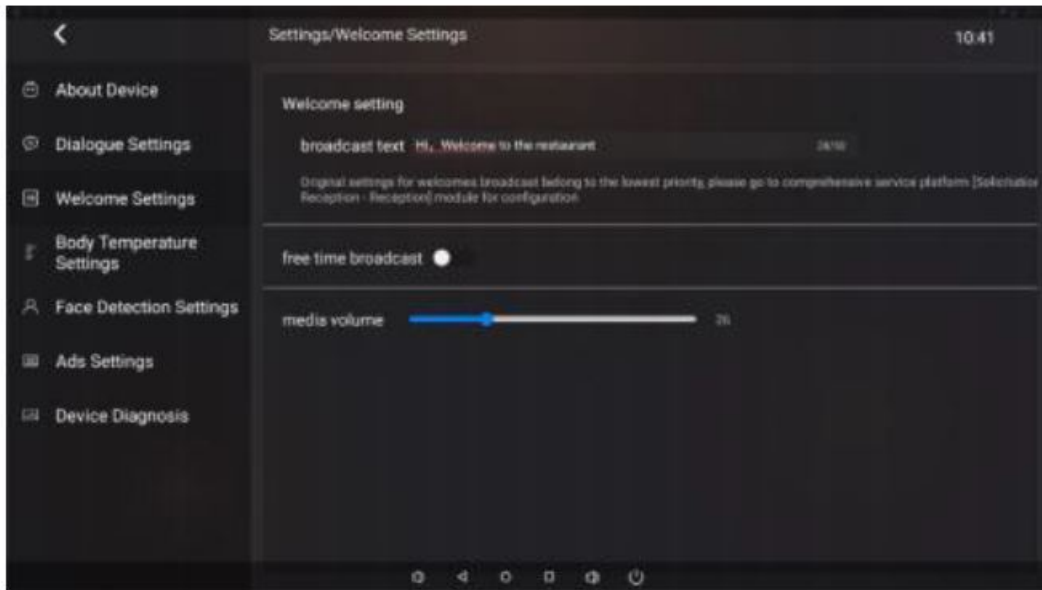


Figure2-9-3

#### 4. Body Temperature Settings

**Temperature measurement switch:** The switch is enabled by default. When the switch is enabled, the robot measures the temperature and broadcasts the temperature measurement result. If the temperature is normal, a normal temperature will be broadcasted.

**Temperature threshold:** maximum normal temperature. If the temperature exceeds this threshold, it will be on side red abnormal. The value is 37.3°C by default, which can be adjusted according to the special application scene.

**Lower body temperature limit:** This parameter is enabled by default. The value is 36°C by default. When the temperature is lower than 36°C, the value will be increased randomly by (0.1-0.3) and can be adjusted according to the special application scene.

**Warning for not wearing a mask:** this function is disabled by default. When the function is enabled and the robot detects that someone does not wear the mask, the voice prompt "Please wear a mask" will be made.

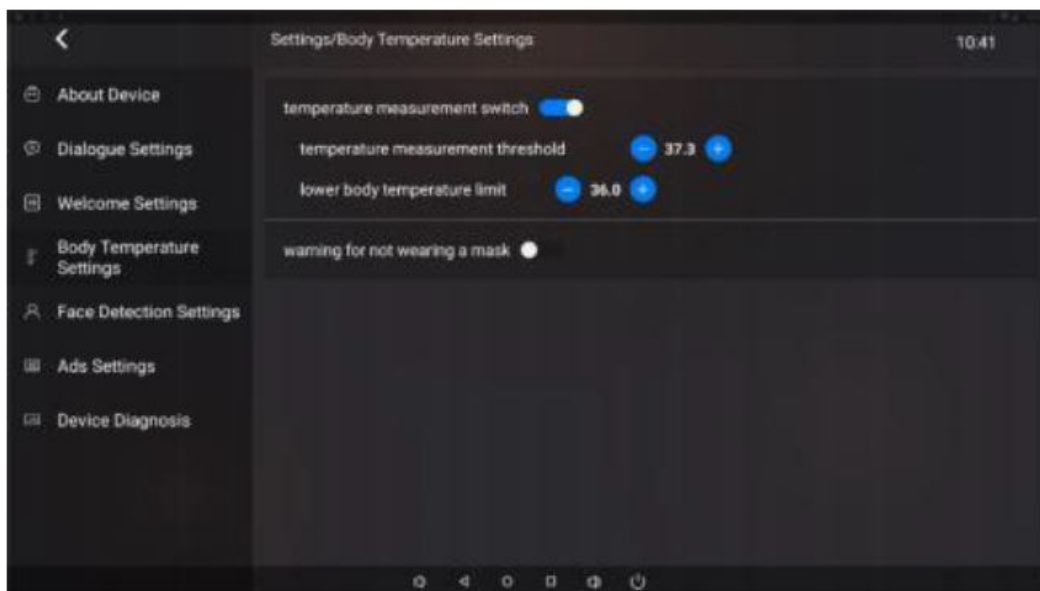


Figure2-9-4

## 5. Face Detection Settings

**Voice activation by face:** this function is enabled by default. After this function is enabled, voice interaction will be enabled when the robot detects a face. After this function is disabled, voice interaction will not be enabled when the robot recognizes a face. You need to click the voice interaction button to initiate voice dialog.

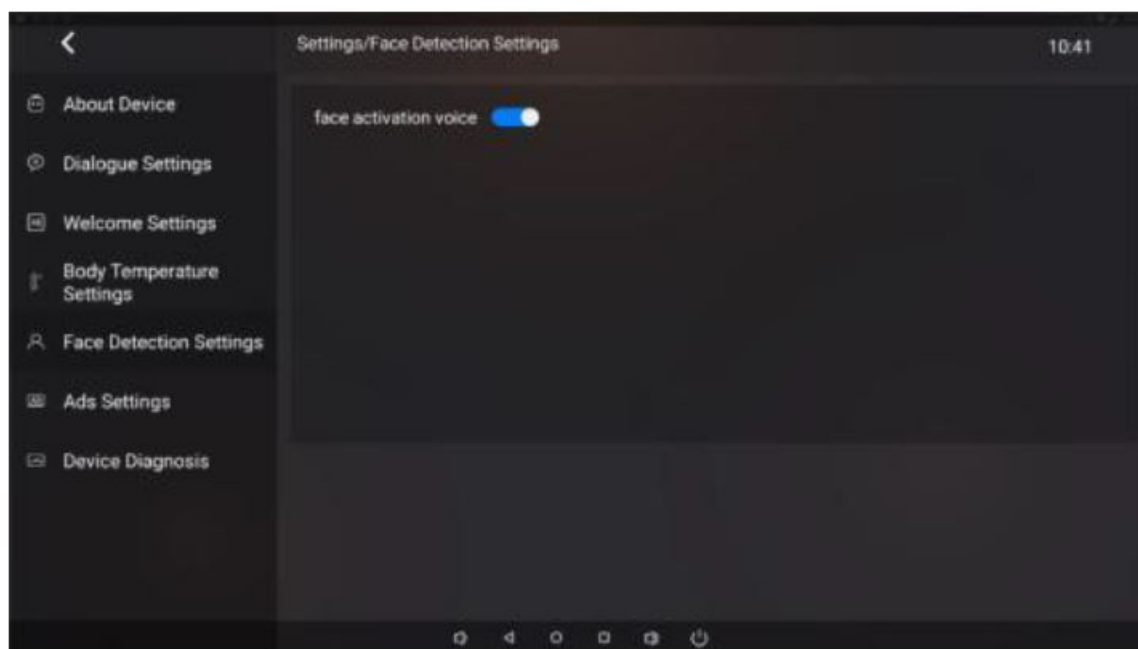


Figure2-9-5

## 6. AdsSettings

**Lower big screen:** it is used to control the volume of video ad on the lower secondary screen.

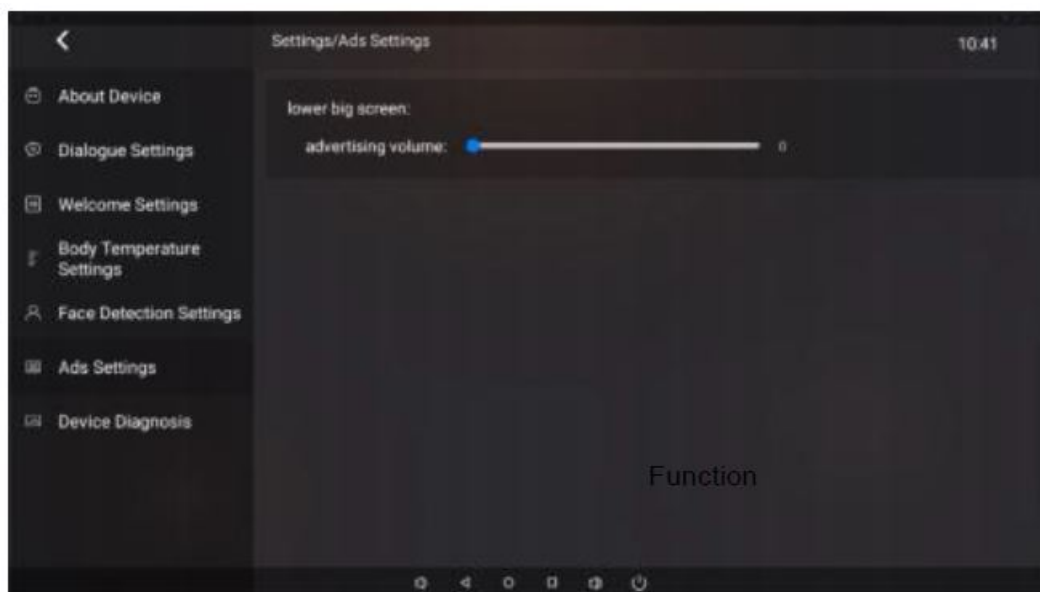


Figure2-9-6

## 7. Device Diagnosis

**Network module:** it is used to detect whether the network module is normal.

**Voice recognition module:** it is used to detect whether the recording module is normal and whether voice authorization is successful.

**Face recognition module:** it is used to detect the initialization status of the face recognition module and the camera.

**Infrared temperature measurement module:** it is used to monitor the initialization status of the infrared temperature measurement module.

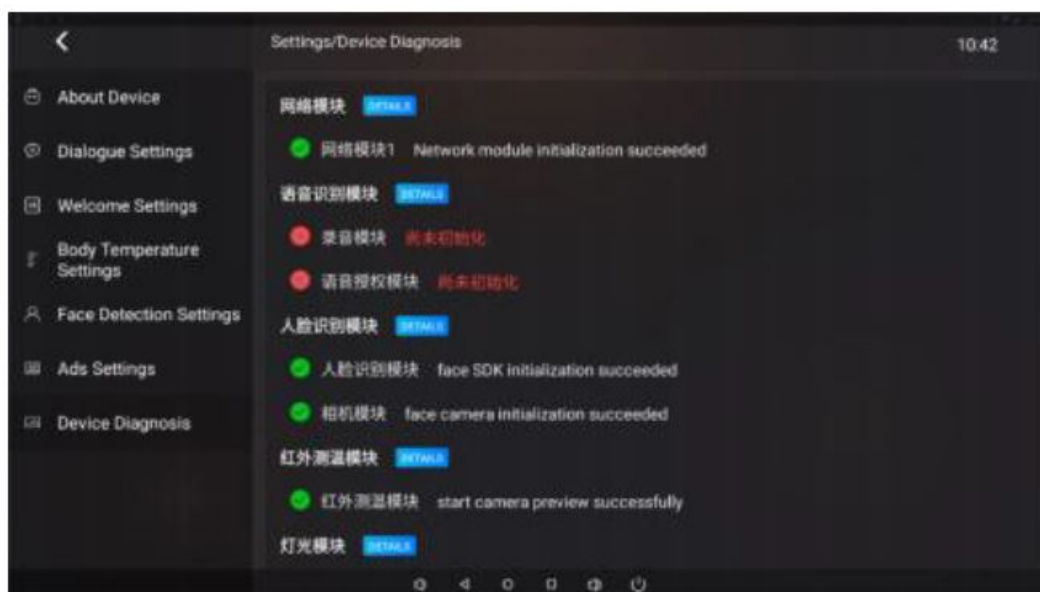


Figure2-9-7

## Catering Software Introduction

### MainInterface

Open the [Intelligent Reception Robot] APP and enter [ MainInterface ] as shown in Figure2-10.

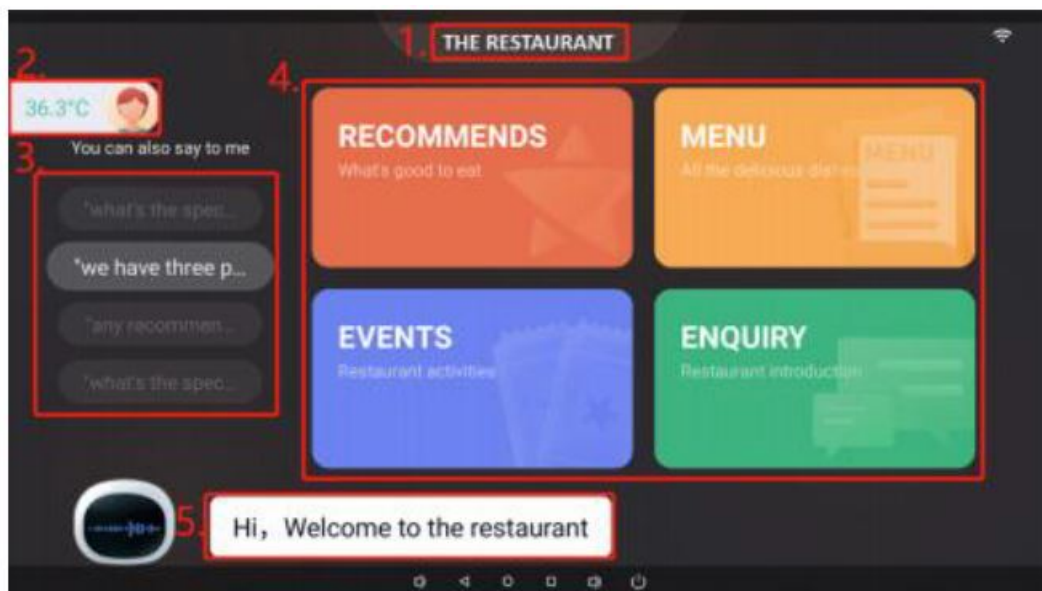


Figure2-10

1. **Business name:** THERE STAURANT by default, which can be changed in[ Comprehensive Service Platform] [Business Management].
2. The real-time temperature measurement data is displayed by default.
3. **Bubble words:** take the basic question and answer data of the platform for display, play for 3 inturn, click or give voice to goto the consulting page.
4. **Voice recognition area:** click it to recognize voice, display the text result and the robot prompt in realtime. 5
5. **Function area:** click or give voice to enter the corresponding function interface.

### Temperature Screening

With in 1-3 seconds after entering the temperature recognition area, the robot completes the temperature measurement independently, and then synchronizes th temperature measurement data to Human-machine Cooperation Comprehensive Service Platform.You can login to the platform to view more temperature measurement conditions.Temperature screening may appearas follows:

#### 1. Normalbodytemperature

When the body temperature is normal, the temperature value of the person will be displayed in the temperature measurement chart, and the temperature value and status will be displayed in the upper left corner of the interface. The light color of eyes and ears for the robot will remain unchanged,and the robot will broad cast by voice.

#### 2. Abnormal body temperature

When the body temperature is abnormal, the pop-up window will appear as shownin Figure2-11. The eye light of the robot turns red and flashes, and the earlight turnsred, and“Temperature anomalies.Please stay here ,and waiting for staff” will be broad casted by voice.In this case, other functions are disabled.After the temperature is normal,the abnormal temperature dialog box will disappear.

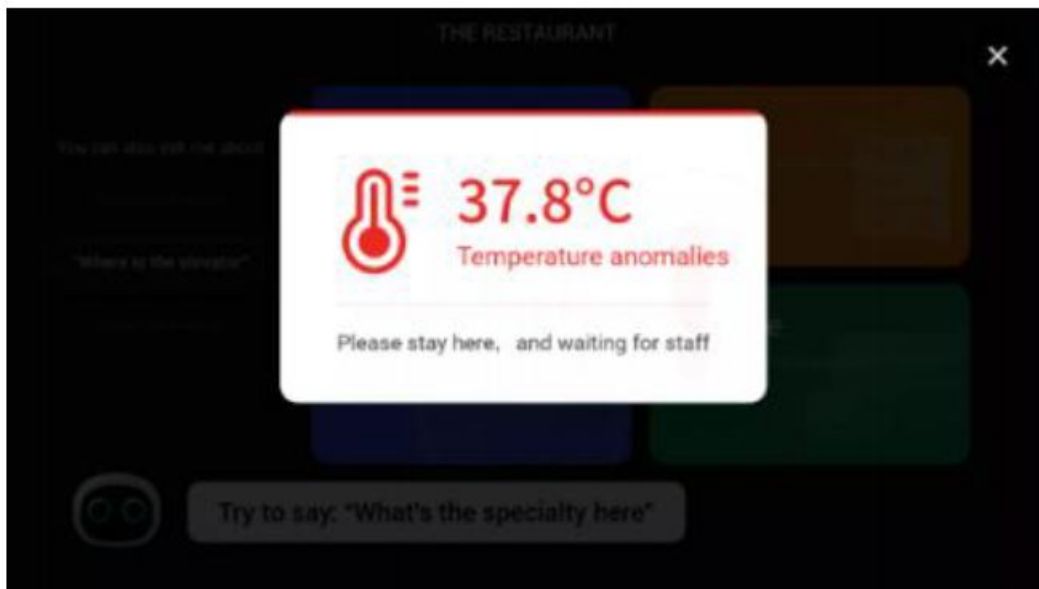


Figure2-11

### MenuPage

Click Menu on [ Main Inter face ]or say Menu, and the interface shown in Figure2- 12 will appear.Configuration method:

1. Configure Cuisine Classification in [Link G Cloud Human-machine Collaboration Comprehensive Service Platform]-[ Cuisine Management- Cuisine Classification] according to the actual situation, and click save.
2. Configure Cuisine Information in[ LinkG Cloud Human-machine Collaboration Comprehensive Service Platform]-[CuisineManagement- CuisineConfiguration] according to the actual situation, which is displayed on the front page according to the selection of different cuisines.

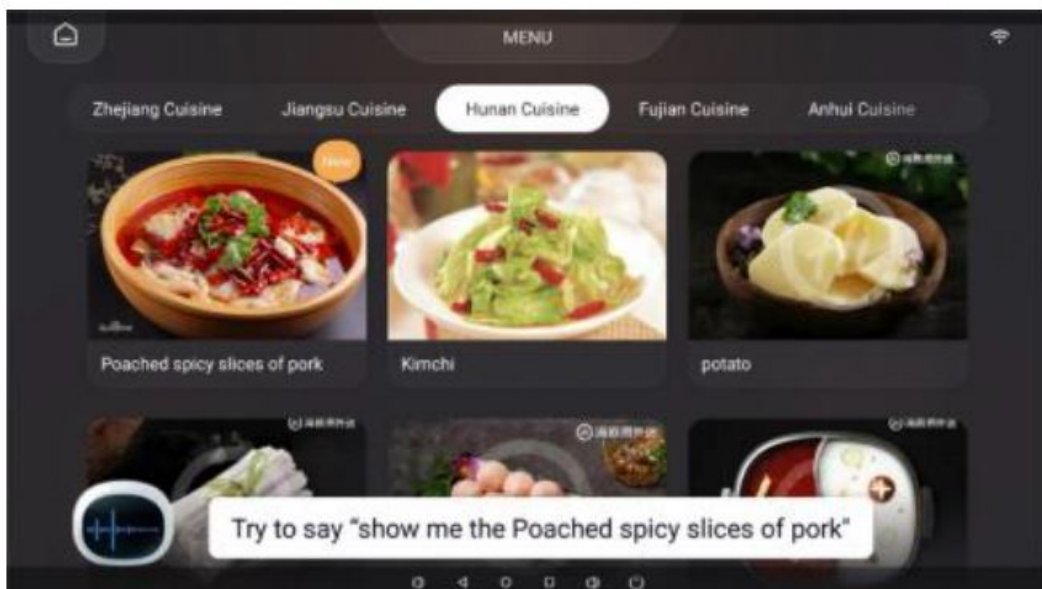


Figure2-12

### ActivityPage

Click Activity on Main Interface or say Activity, and the interface shown in Figure2- 13 will appear.Configuration method: first configure in [CloudHuman-machine Collaboration Comprehensive Service Platform]-[Catering Activity] according to the actual situation,clickAddaaftertheconfiguration, and then the activity module at the robot end can be displayed.

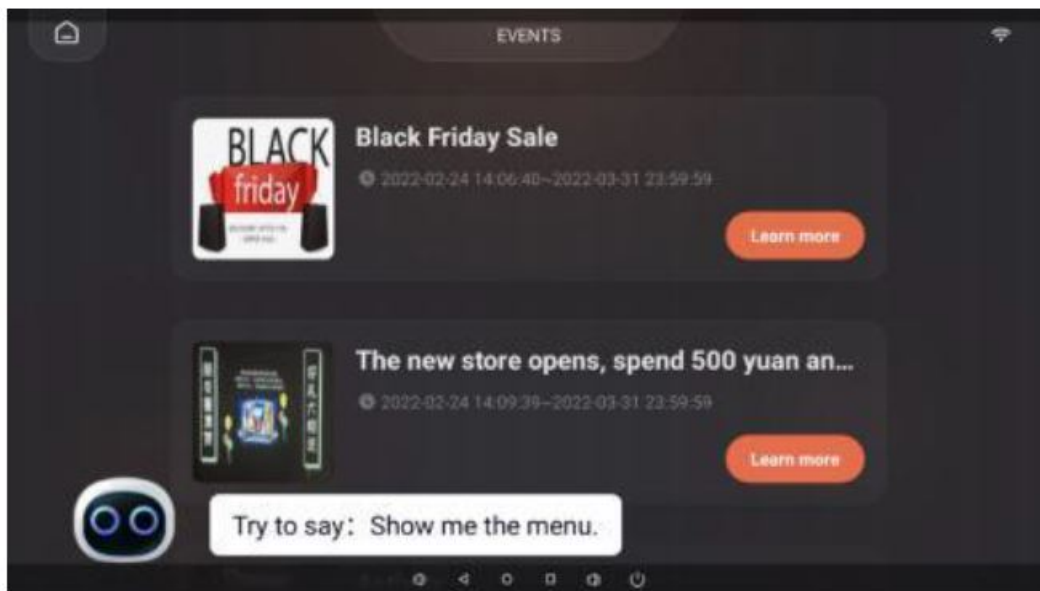


Figure2-13

### Recommendation Page

When no one operates, the screen will display recommended cuisines and merchant activity information in turn, as shown in Figure2-14. At this time, click the screen to enter [MainInterface]. Users can also enter this page again by clicking or saying "Recommends" in [MainInterface].

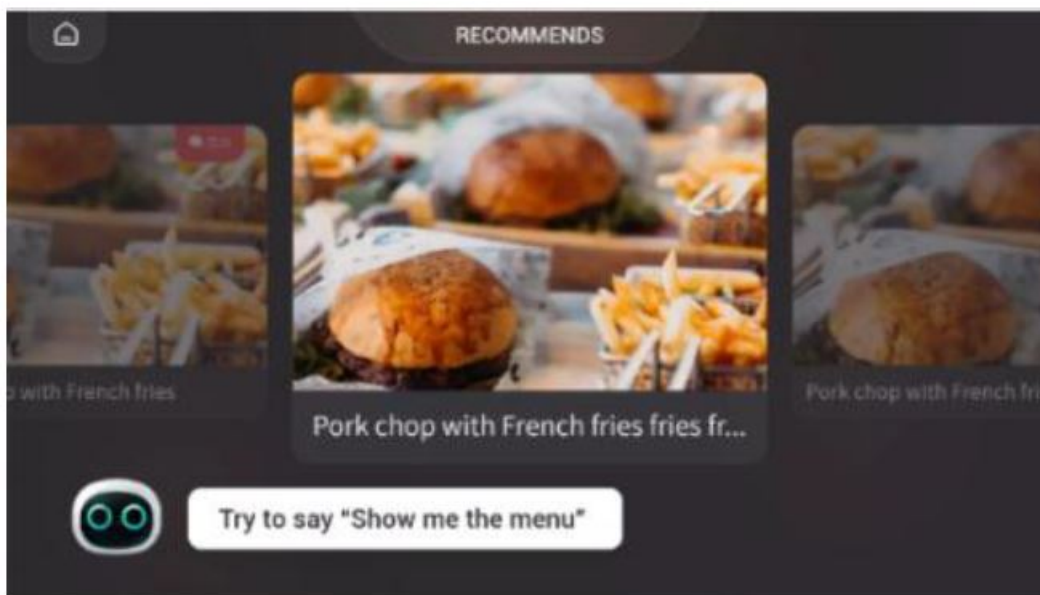


Figure2-14

### Configuration method:

1. **Recommended cuisines:** the merchant can configure in [Link G Cloud Human-machine Collaboration Comprehensive Service Platform]-[Cuisine Management- Cuisine Configuration] according to the actual situation. If any of the special type or new dishes are enabled, it can be displayed in Recommendation Page.
2. **Activities:** the merchant can configure in [Link G Cloud Human-machine Collaboration Comprehensive Service Platform]-[Dining Activities] according to the actual situation, and the activities will be displayed in Recommendation Page when "Enable when Canvassing" is enabled.

### Consultation Service

Click Consultation Service on [Main Interface] or say "View all consultation services", and the interface shown in



Figure 2-15 will appear.

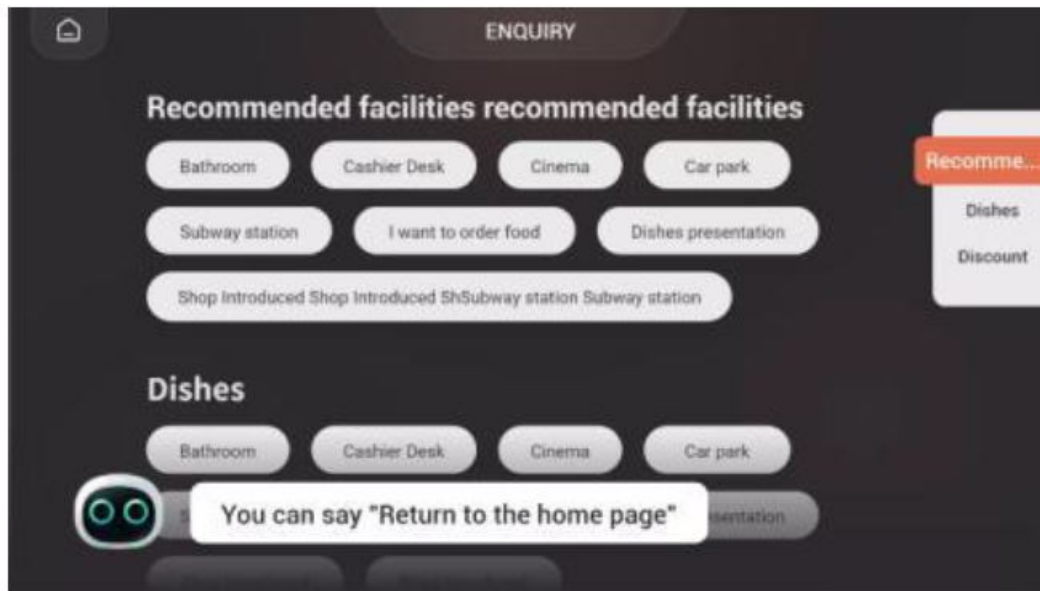


Figure2-15

Users can customize labels to class if their consultation contents, and add high-frequency questions and answers to the corresponding categories. Users can get answers by asking questions by voice or clicking keywords to link to the question details page, as shown in Figure2-16.

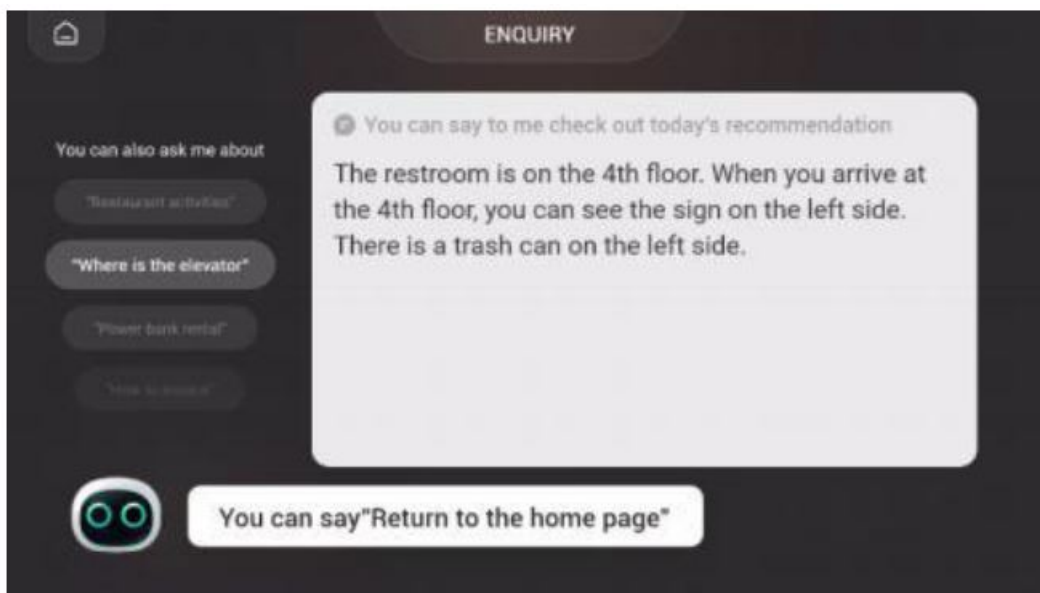


Figure2-16

**Configuration method:** Click in[ Link G Cloud Human-machine Collaboration Comprehensive Service Platform]-[ Information Settings-Dining Q&A] to add and configure different types of high-frequency questions and correct answers according to the actual scene and high-frequency questions, and display and broadcast tousers through the robot.

## FCC

### FCC Compliance Statement

1. This device complies with Part 15 of the FCC rules. Operation is subject to the following two conditions:
2. this device may not cause harmful interference, and (2) this device must accept any interference received, including interference that may cause undesired operation.
3. Changes or modifications not expressly approved by the party responsible for compliance could void the user s

authority to operate the equipment.


### FCC information

**Note:** This equipment has been tested and found to comply with the limits for a Class B digital device, pursuant to part 15 of the FCC Rules. These limits are designed to provide reasonable protection against harmful interference in a residential installation. This equipment generates, uses and can radiate radio frequency energy and, if not installed and used in accordance with the instructions, may cause harmful interference to radio communications. However, there is no guarantee that interference will not occur in a particular installation. If this equipment does cause harmful interference to radio or television reception, which can be determined by turning the equipment off and on, the user is encouraged to try to correct the interference by one or more of the following measures:

- Reorient or relocate the receiving antenna.
- Increase the separation between the equipment and receive.
- Connect the equipment into an outlet on a circuit different from that to which the receiver is connected.
- Consult the dealer or an experienced radio/TV technician for help.

To maintain compliance with FCC's RE Exposure guidelines, This equipment should be installed and operated with minimum distance between 20cm the radiator your body: Use only the supplied antenna.

### Documents / Resources

	<p><a href="#">GuardforceA PR1120B008F6 AI Reception Robot</a> [pdf] User Manual PR1120B008F6 AI Reception Robot, PR1120B008F6, AI Reception Robot, Reception Robot</p>
--	---