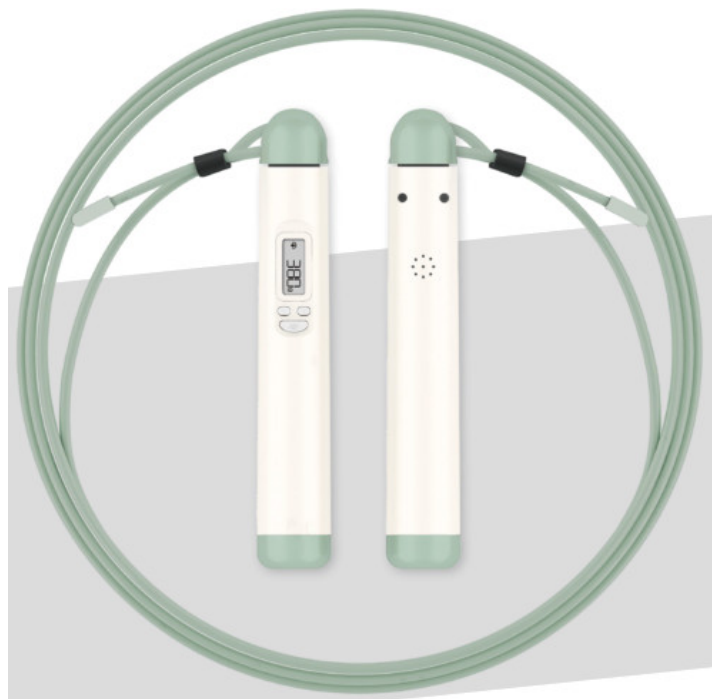




Guangdong Welland Technology RS2150B Smart Skipping Rope User Manual

[Home](#) » [Guangdong Welland Technology](#) » Guangdong Welland Technology RS2150B Smart Skipping Rope User Manual 

Smart Skipping Rope
Model: RS2150B
User manual





Please read the instructions carefully before using the jump rope.

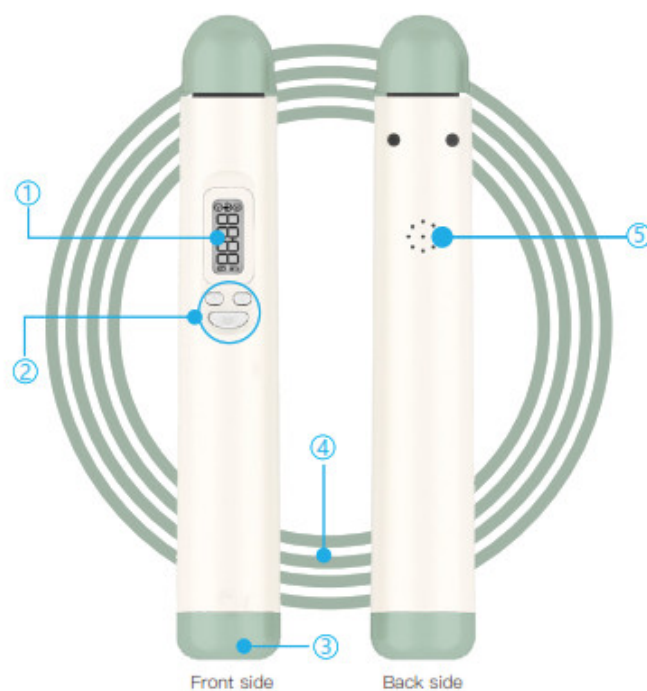
Contents

- [1 Product Specification](#)
- [2 Product Feature](#)
- [3 Product LCD display](#)
- [4 Display in different modes](#)
- [5 Installation of the Jump Rope](#)
- [6 Battery Installation Flow](#)
- [7 Operation](#)
- [8 Jump Modes](#)
- [9 Caution and Maintenance](#)
- [10 Battery and recharge](#)
- [11 Documents / Resources](#)
 - [11.1 References](#)
- [12 Related Posts](#)

Product Specification

Product Size	Φ27 x 166mm
Product Weight	0.2 kg
LCD Display	19.6 x 8.1mm
Power	3.0 V 2xAAA Battery
Max. Jumps	9999 times
Max. Time	99 Mins 59 Seconds
Min. Jump	1 time
Min. Time	1 second
Auto off Time	60 seconds

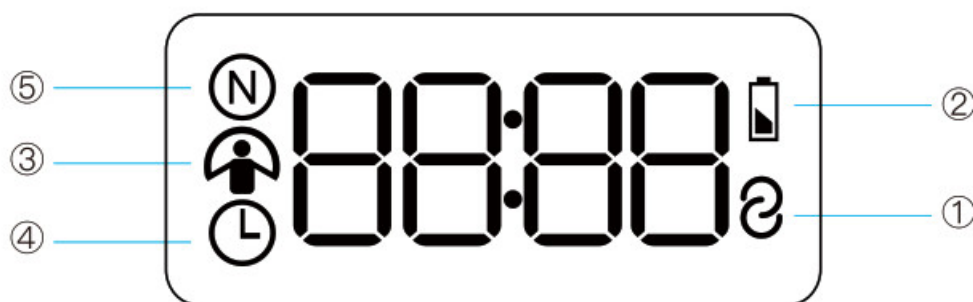
Product Feature



1. LCD Display
2. Power on/off button and select button
3. Battery cover
4. 3000mm Rope
5. Beeper

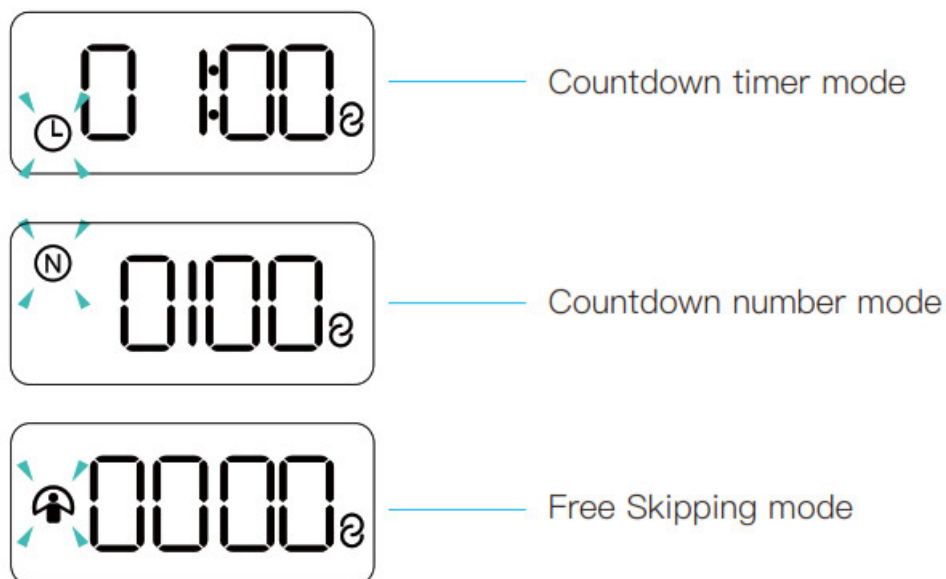
Attention: Before using, please open the battery cover to install 2xAAA batteries.

Product LCD display



1. BT icon indicates connected
2. The battery indicator will flash when low power to remind to replace the new battery.
3. Free jumping mode: jump without time or repetition limit.
4. Time countdown mode: jump with a time limit. You can choose from 30 seconds, 1 minute, 5 minutes, 10 minutes, and customized time on the Skipjoy App. Without the app, the device will record the last selected period of time.
5. Jump countdown mode: set a limit of jump reps. You can choose from 50, 100, 1000, and customized jump reps on the Skipjoy App. Without the App, the rope will record the last completed set of reps.

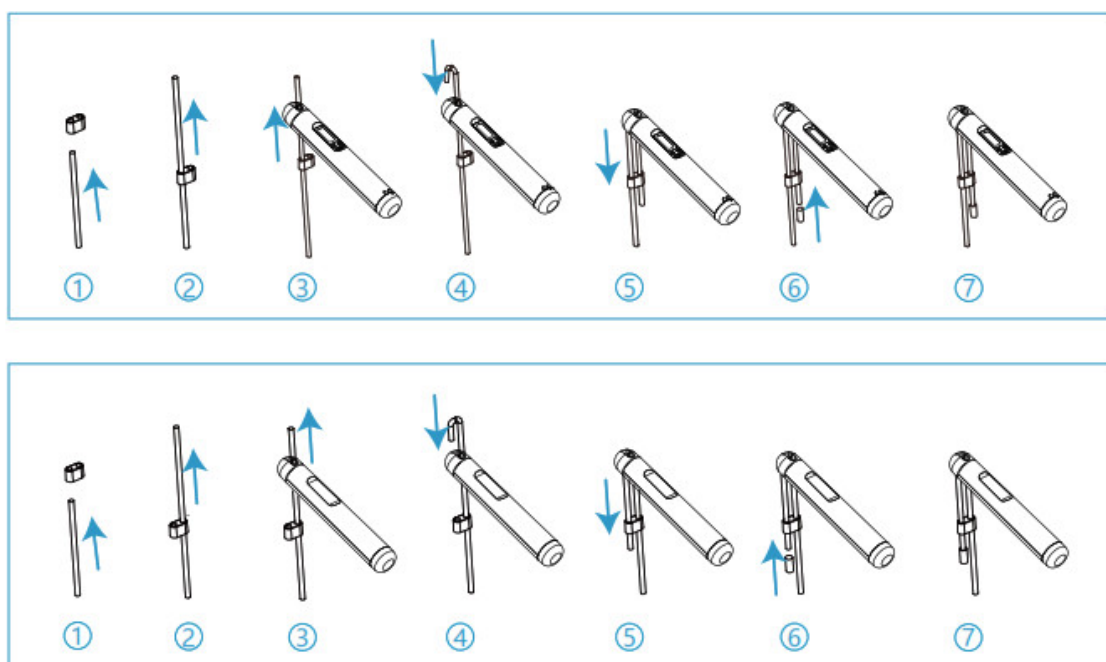
Display in different modes



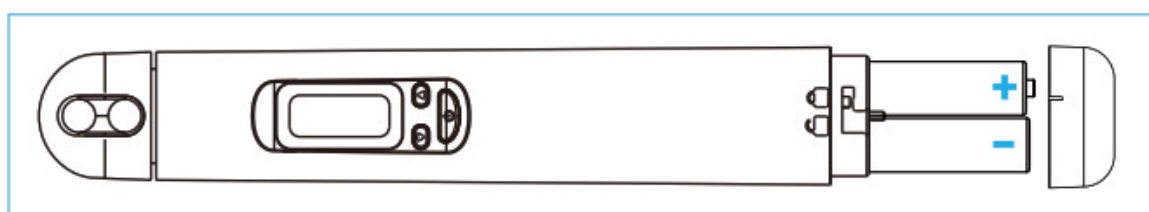
Installation of the Jump Rope

The jump handle and the rope are packed separately in the box, please follow the below steps to install the rope and adjust the length accordingly.

Important Note: To avoid inaccurately, please make sure the longer rope is installed in the inside part of the handle.



Battery Installation Flow



Attention: Please pay attention to positive and negative poles of the battery case (like the above picture showed); “+” indicates the battery positive up, “-” indicates the battery negative up; After installing the battery, please install the battery cover and make sure the positive and negative poles incorrect directions.

Operation

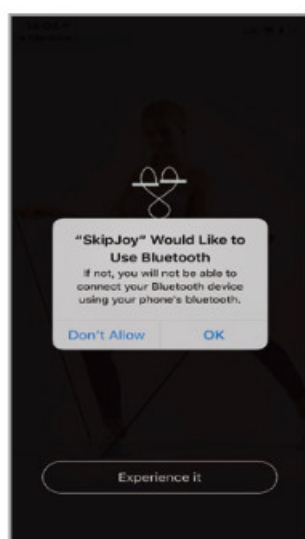
1. Before starting using the jump rope, please download the App: Skipjoy from the App Store or Google play. Or you can scan below QR code below to download the App.



<http://fitfeel.cn/skipjoy>

2. When you install the App, please accept the permission requirement on Bluetooth, GPS & Location if your phone is operated under the Android system;

Note: It is required by Google that all the smartphones operated with Android Ver. 6.0 or above must ask for the permission of location if any BLE device could be scanned and linked through Bluetooth. Any private information would not be collected by the App. You can also refer to the official document of Google for more information: <https://source.android.com/devices/bluetooth/ble>

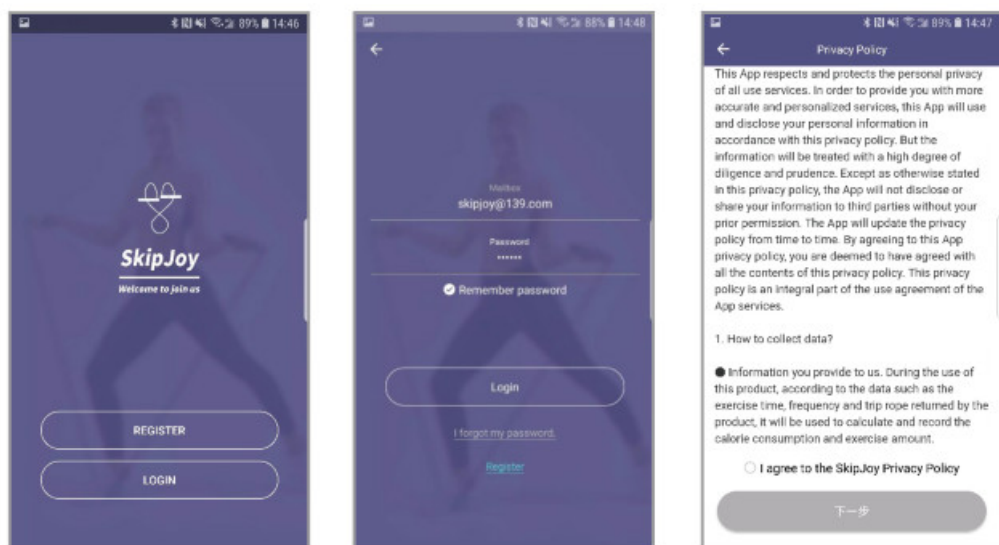


Allow Bluetooth for iOS

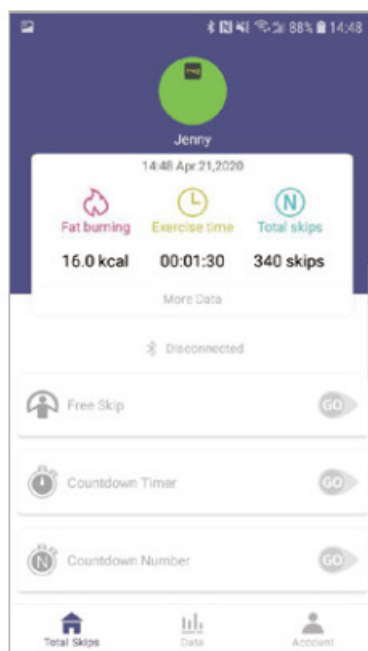


Allow location for Android

3. Open Skipjoy App, fill in your personal info, and start the App.



4. Skipjoy will automatically pair the jump rope, you can check the main interface on the App to check the status of the connection.
 - “Connected” shown on the main interface means successful pairing.
 - “Disconnected” shown on the main interface means unsuccessful pairing. In this condition, please press “Mine” → “Device” → “+” to add the device manually.
5. Click the mode you need on the main interface on the App to start your jumping;



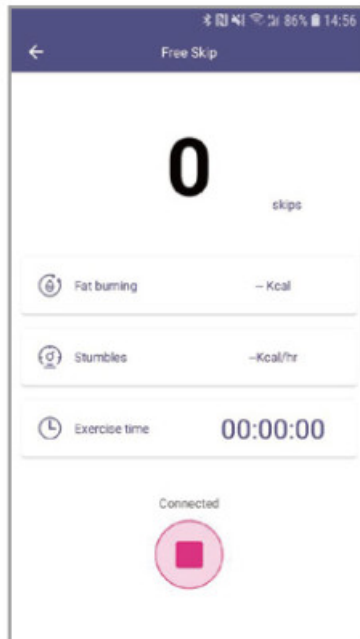
Jump Modes

Free Jumping / Time countdown Jumping / Numbers countdown Jumping

1. Keep pressing the button for about 3 seconds to shift the mode you need.
2. You can also choose the mode from App.

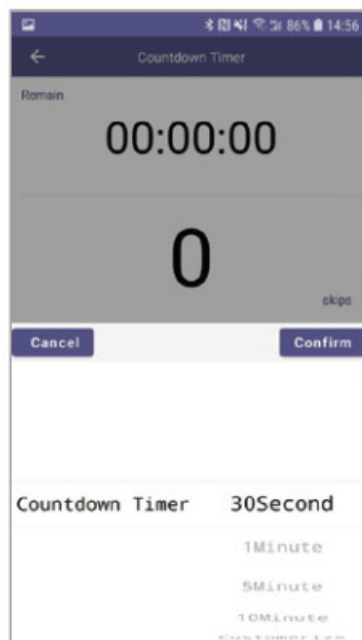
Free Jumping:

Jump the rope freely and there is no limit on time and number of jumps.



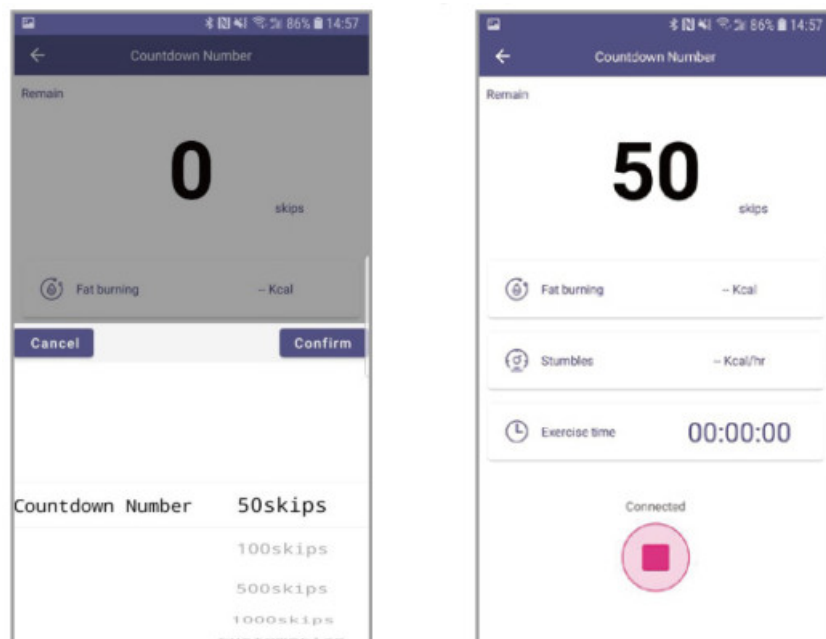
Time countdown Jumping:

- set the total jumping time.
- options for time can be set on App: 30 sec, 1 min, 5 min, 10 min, and customized time;
- Without the App, the rope will use the last countdown setting of time from the App.



Numbers countdown Jumping:

- set the total jumps;
- options for a number of jumps can be set on App: 50, 100, 500, 1000, and customized number of jumps.



No Offline storage function

If need the jumps data to save to the History record, please make sure each exercise with using the App (smart rope connected with the Skipjoy App).

Caution and Maintenance

- Do not put the rope in a very wet or hot environment.
- Avoid hitting or dropping the rope violently, otherwise, damage may occur.
- Treat the rope with care as it is an electronic instrument.
- Do not immerse the handle into water or use it while raining, because it is not water-proof and damage may occur to the built-in electronic device.
- The rope is only used for the purpose of physical exercise. Do not use it for other purposes.
- Be careful when using the rope to avoid any injuries, and children under 10 are suggested to use the rope under the watch of parents.

Battery and recharge

Battery: The rope has a AAA battery which could sustain normal use of about 90 days (calculated based on the daily use of 15 minutes, actual using time varies according to the environment and time of use). The typical standby time is 6months (experimental data of the manufacturer under the temperature 25°C and humidity 65%RH).

If the signal appears on the display, please replace 2*1.5V/AAA dry batteries in time to avoid affecting the normal use of the equipment.

If the signal appears on the display, please replace 2*1.5V/AAA dry batteries in time to avoid affecting the normal use of the equipment.

Disposal



The packaging material is recyclable. Please dispose of it in an environmentally friendly manner and take it to a recycling center.



Dispose of the device in an environmentally friendly manner.
Dispose of it at a recycling center for used electrical and electronic devices.
You can obtain more information from your local authorities.



The batteries should be removed prior to disposal of the device and disposed of separately from the device. To protect the environment, non-rechargeable and rechargeable batteries may not be disposed of with normal household waste but must be taken to suitable collection points. Also, note the relevant statutory regulations governing the disposal of batteries.

NOTE: This equipment has been tested and found to comply with the limits for a Class B digital device, pursuant to part 15 of the FCC Rules.

These limits are designed to provide reasonable protection against harmful interference in a residential installation. This equipment generates uses and can radiate radio frequency energy and, if not installed and used in accordance with the instructions, may cause harmful interference to radio communications. However, there is no guarantee that interference will not occur in a particular installation. If this equipment does cause harmful interference to radio or television reception, which can be determined by turning the equipment off and on, the user is encouraged to try to correct the interference by one or more of the following measures:

- Reorient or relocate the receiving antenna.
- Increase the separation between the equipment and receiver.
- Connect the equipment into an outlet on a circuit different from that to which the receiver is connected.
- Consult the dealer or an experienced radio/TV technician for help.

Changes or modifications not expressly approved by the party responsible for compliance could void the user's authority to operate the equipment.

This device complies with Part 15 of the FCC Rules. Operation is subject to the following two conditions:

- (1) this device may not cause harmful interference, and
- (2) this device must accept any interference received, including interference that may cause undesired operation.



Made in China
Model: RS2150B

Documents / Resources



[Guangdong Welland Technology RS2150B Smart Skipping Rope](#) [pdf] User Manual
RS2150B, 2AP3Q-RS2150B, 2AP3QRS2150B, RS2150B Smart Skipping Rope, Smart Skipping Rope

References

- [StarWars.com | The Official Star Wars Website](https://www.starwars.com/)