

**UPM3 Grundfos Circulating Pump**



# UPM3 Grundfos Circulating Pump Instruction Manual

[Home](#) » [GRUNDFOS](#) » UPM3 Grundfos Circulating Pump Instruction Manual 

## Contents

- 1 UPM3 Grundfos Circulating Pump
- 2 Product Information
- 3 Product Usage Instructions
- 4 Safety Guidelines:
- 5 Usage Steps:
- 6 Cleaning and Maintenance:
  - 6.1 Warning
  - 6.2 Installation Instruction
  - 6.3 Operating Instruction
  - 6.4 EU declaration of conformity
- 7 Documents / Resources
  - 7.1 References



**UPM3 Grundfos Circulating Pump**



## Product Information

### Specifications:

- **Model:** UPM3(K) AUTO
- **Age Recommendation:** 8 years and above
- **Supervision Requirement:** Yes
- **Usage:** Water pump

## Product Usage Instructions

### Safety Guidelines:

This appliance can be used by children aged 8 years and above or persons with reduced physical, sensory, or mental capabilities under supervision or instruction to ensure safe usage.

### Usage Steps:

1. Ensure the appliance is placed on a stable surface.
2. Connect the necessary hoses according to the user manual.
3. Plug in the appliance to a power source.
4. Turn on the appliance using the designated switch.
5. Monitor the appliance during operation.

### Cleaning and Maintenance:

Cleaning and user maintenance should not be performed by children without supervision. Follow the cleaning instructions provided in the user manual to ensure the longevity of the product.

## FAQ (Frequently Asked Questions)

- **Q: Can children play with the appliance?**

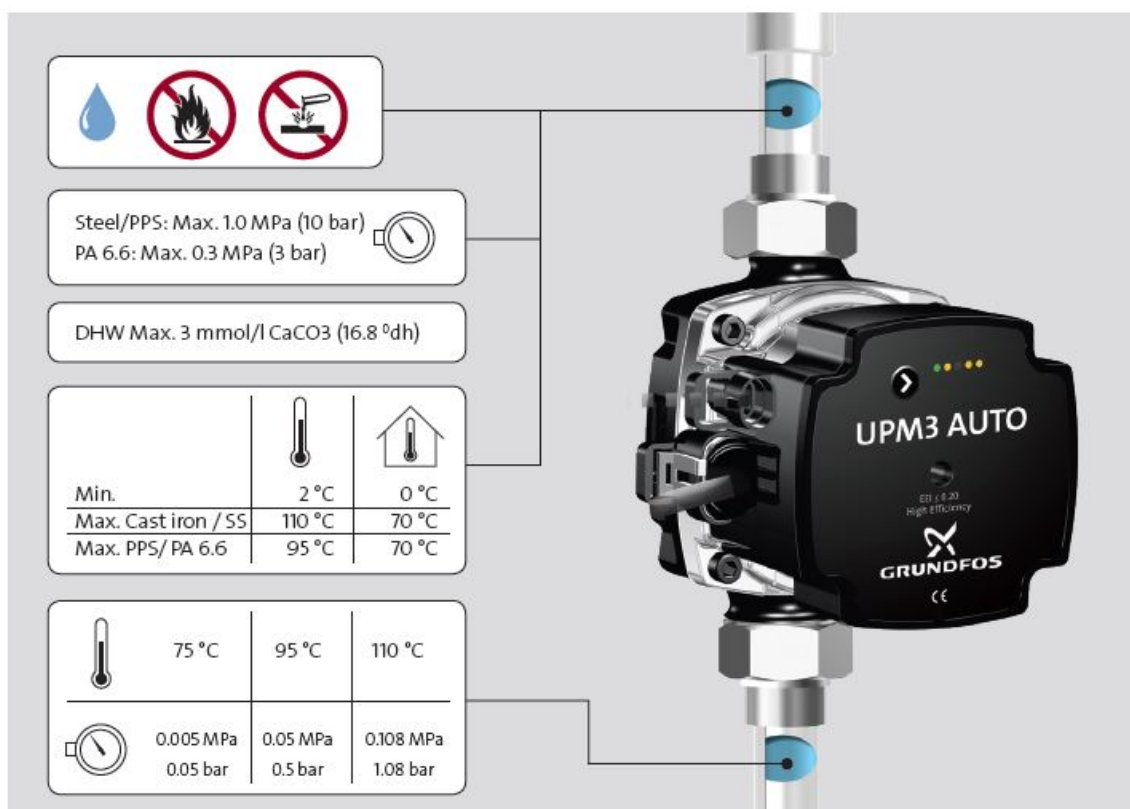
A: No, children should not play with the appliance. It is recommended that adults supervise children when using the product.

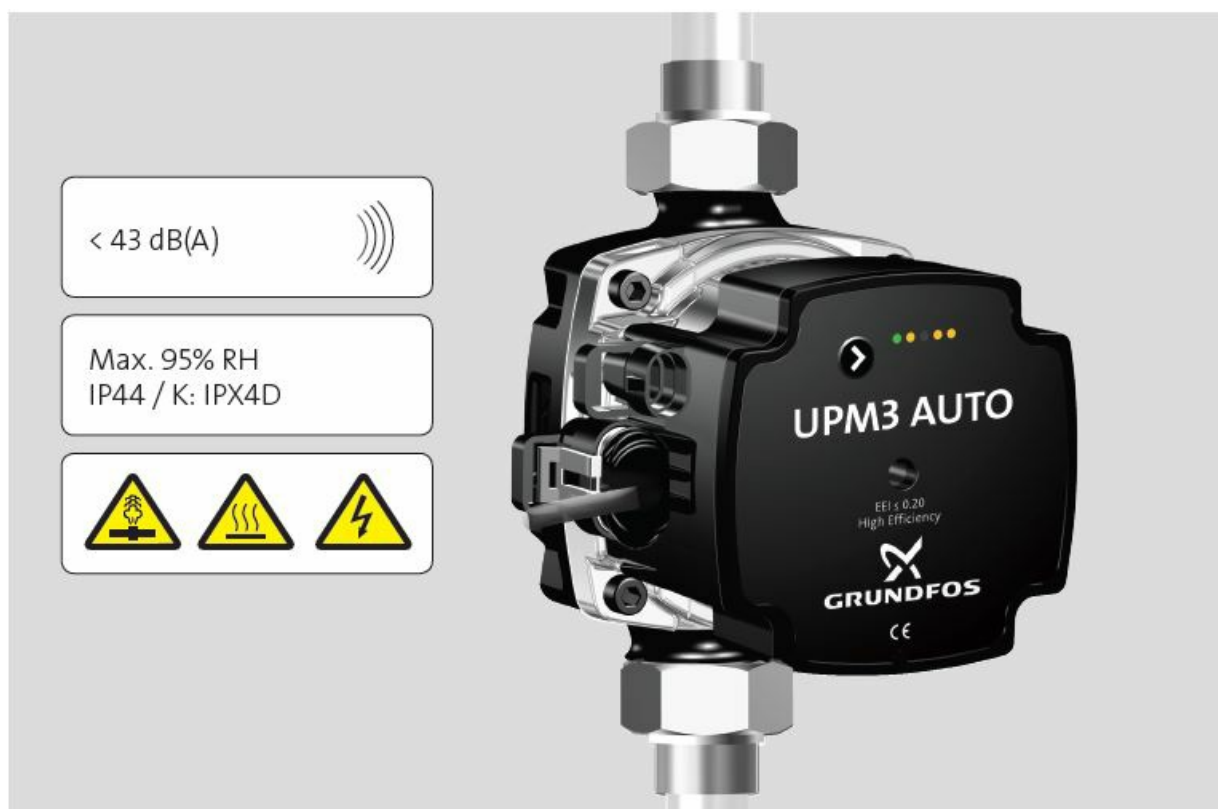
- **Q: What should I do if the appliance malfunctions?**

A: In case of malfunction, unplug the appliance immediately and refer to the troubleshooting section of the user manual. If issues persist, contact customer support for assistance.

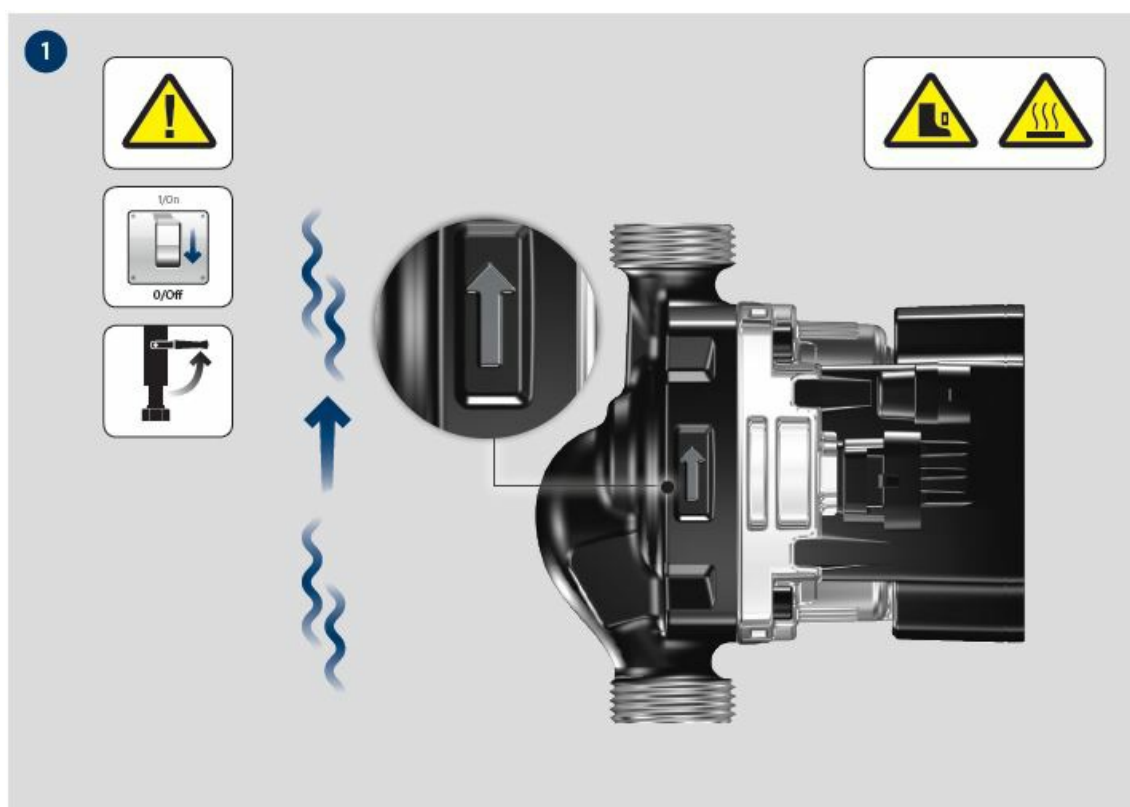
## Warning

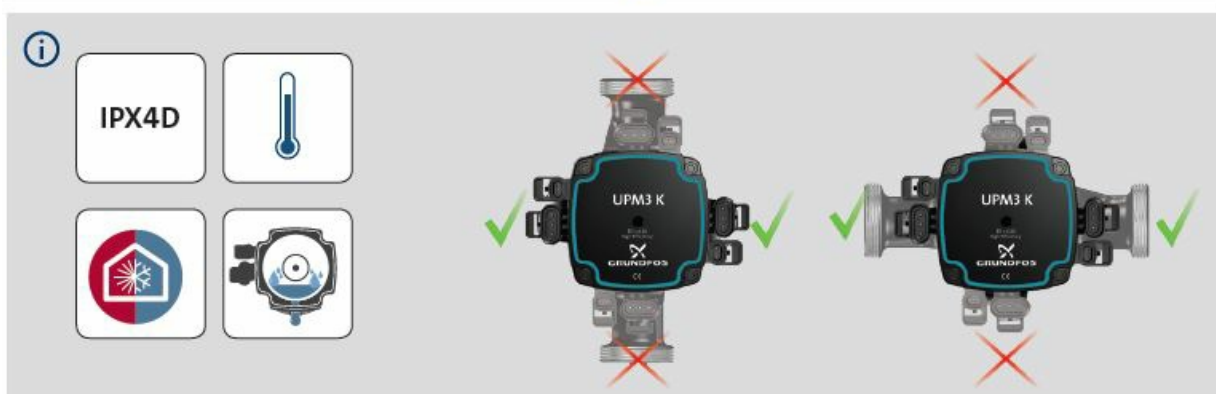
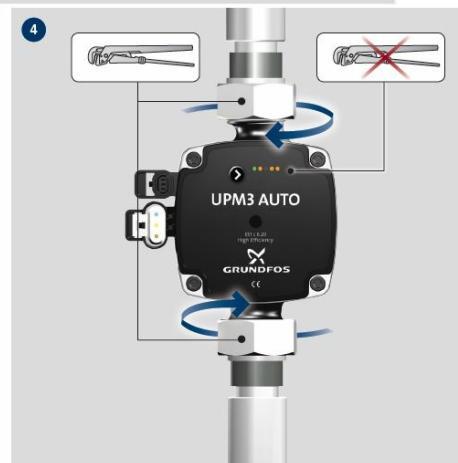
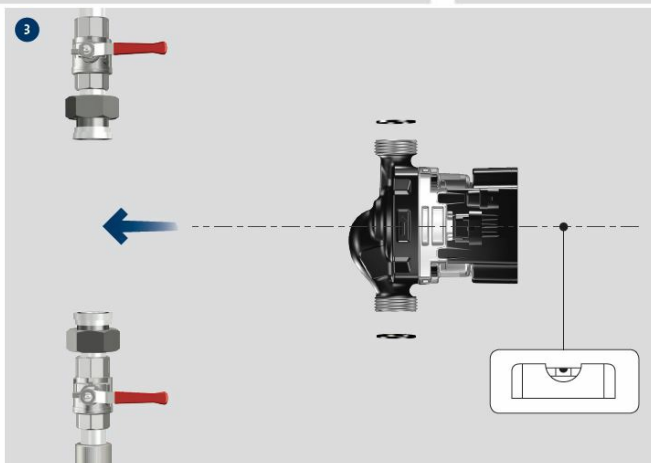
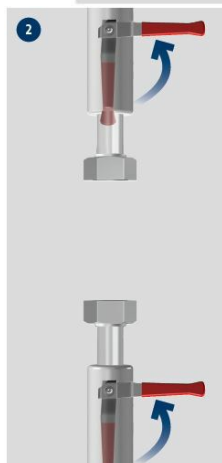
This appliance can be used by children aged 8 years and above and persons with reduced physical, sensory or mental capabilities or lack of experience and knowledge if they have been given supervision or instruction concerning the use of the appliance in a safe way and understand the hazards involved. Children shall not play with the appliance. Cleaning and user maintenance shall not be done by children without supervision.

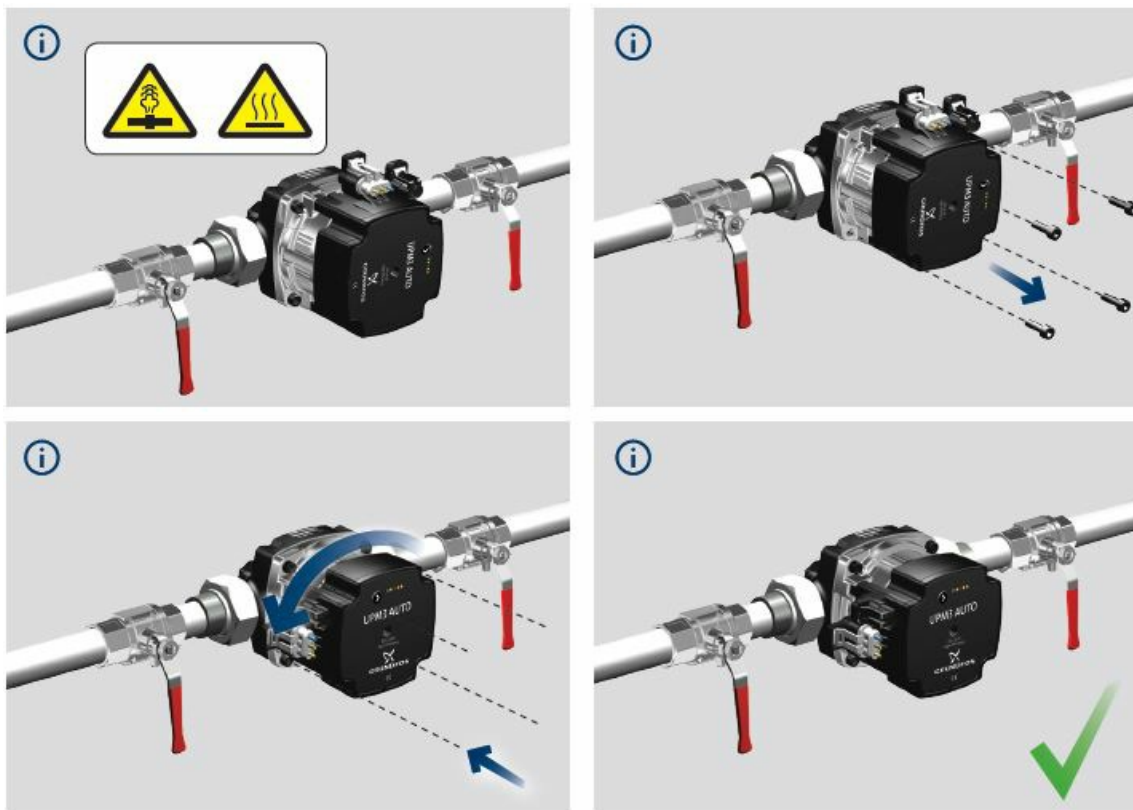




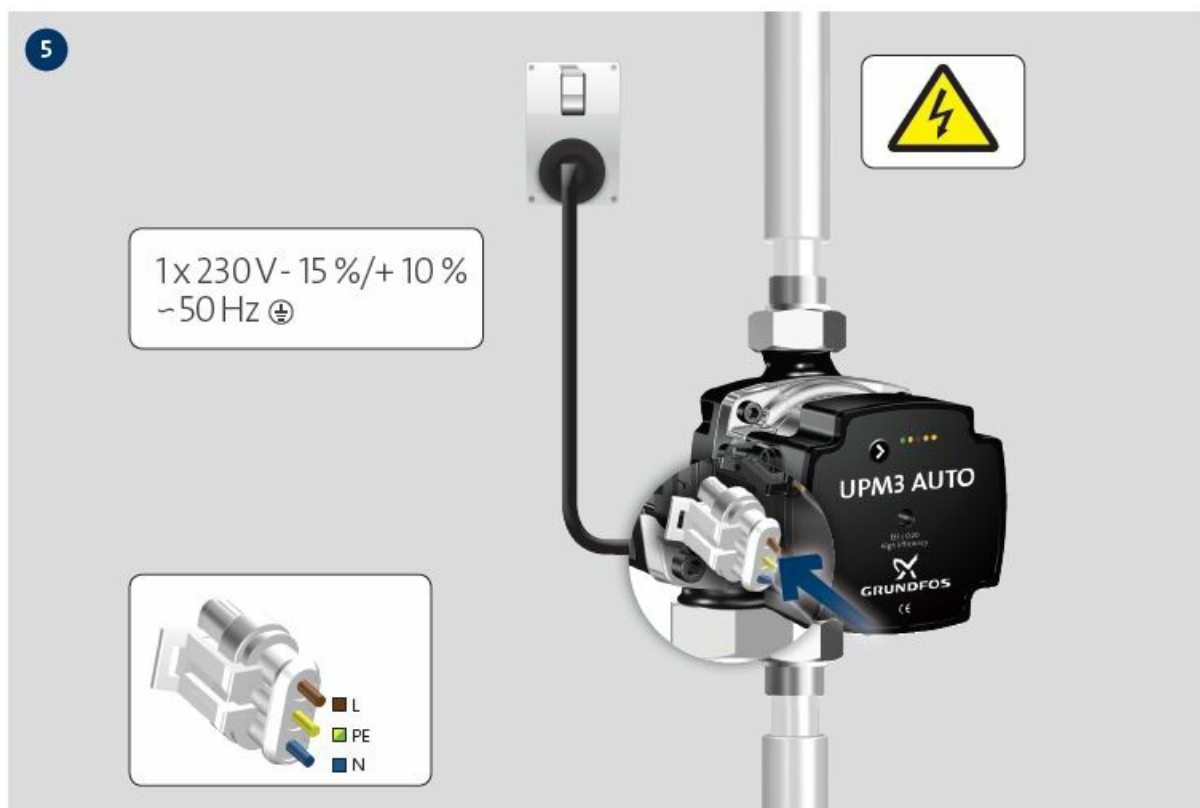
## Installation Instruction

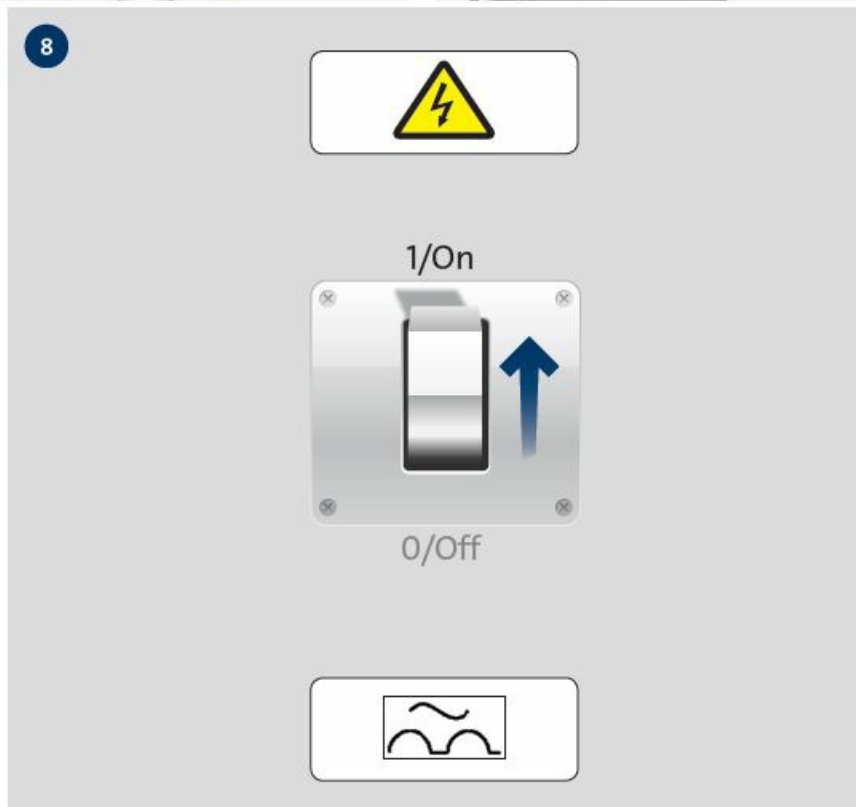
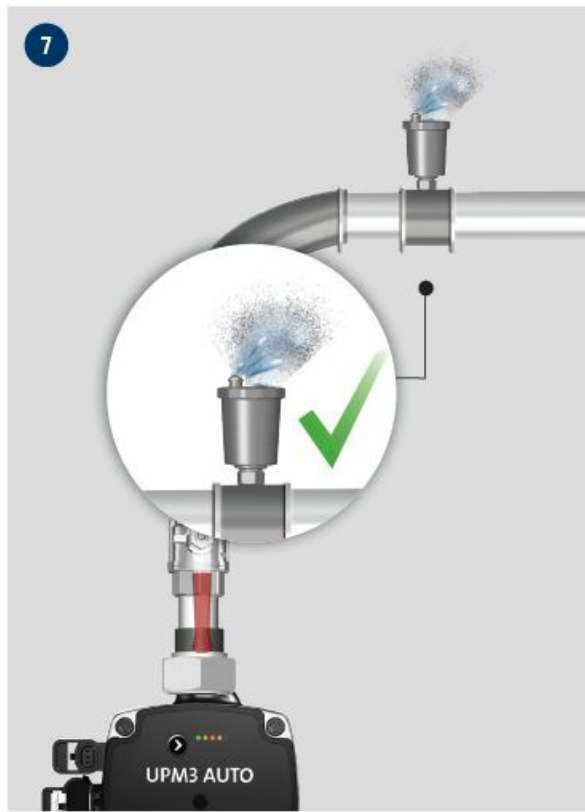
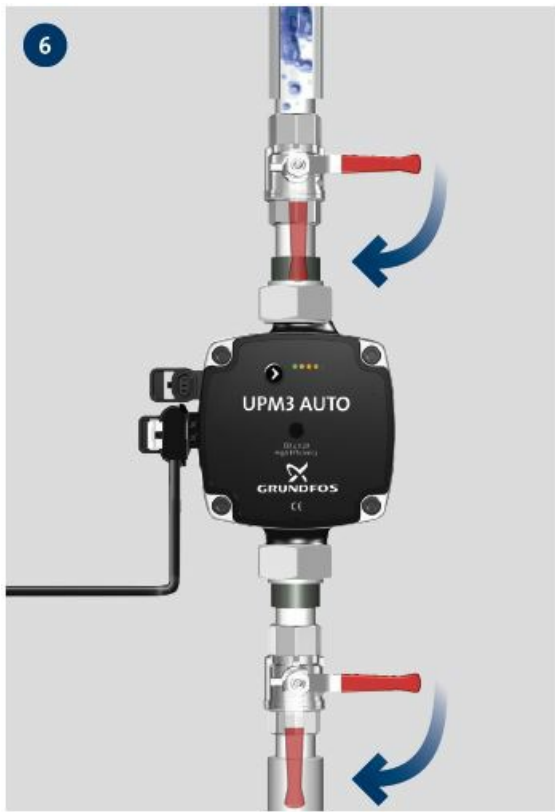




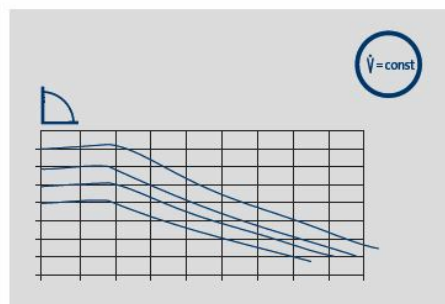
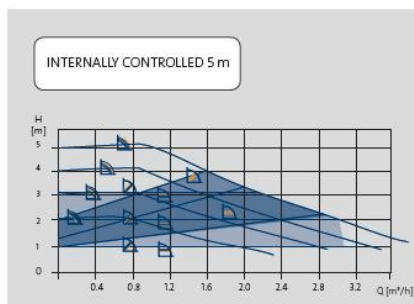
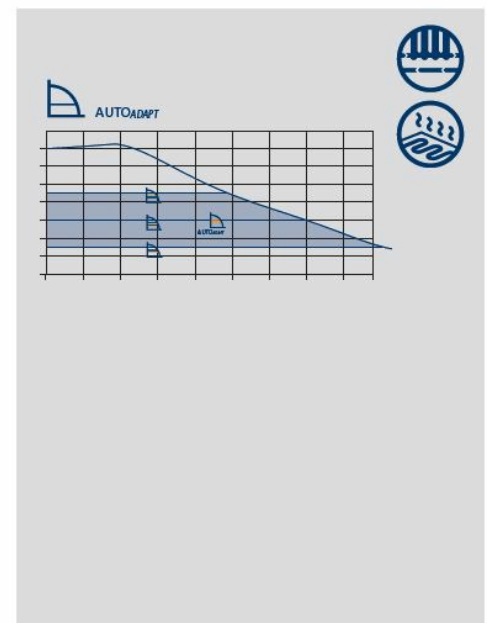
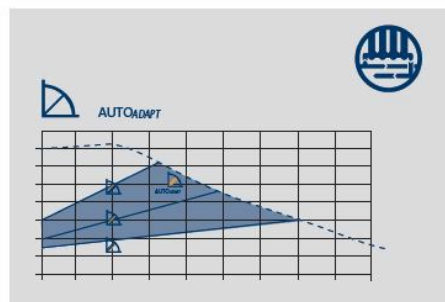
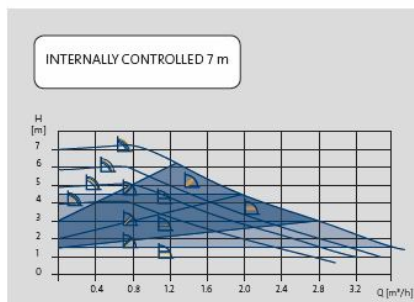
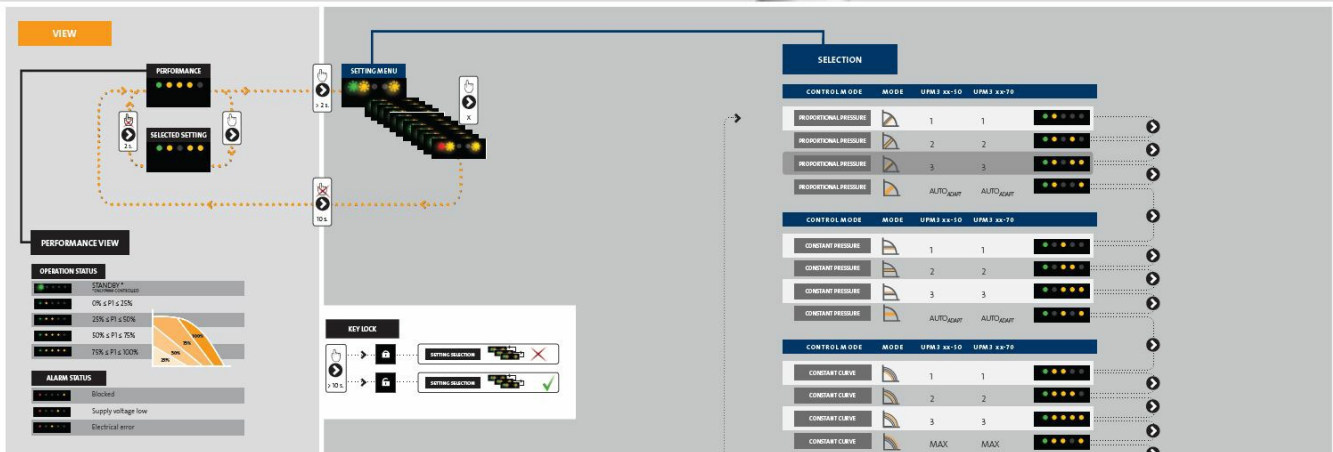
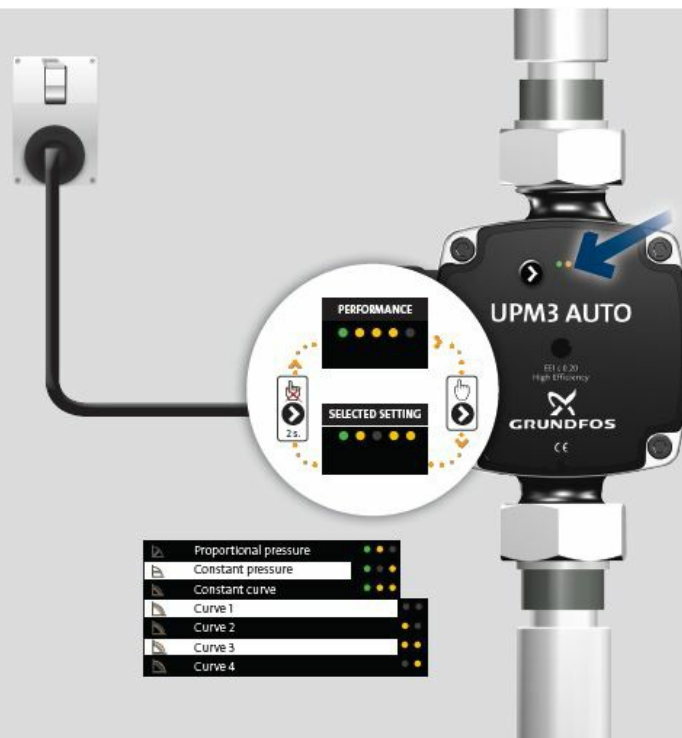


## Operating Instruction













FAULT	DISPLAY	SOLUTION

## EU declaration of conformity

We, Grundfos, declare under our sole responsibility that the products GFNJB, GFNJD (UPM3 variants with user interface) and GFNJC, GFNJC (Other UPM3 variants), to which the declaration below relates, are in conformity with the Council Directives listed below on the approximation of the laws of the EU member states.

### Low Voltage Directive (2014/35/EU) Standards used:

- EN 60335-1:2012/AC:2014/A11:2014

- EN 60335-2-51:2003/A1:2008/A2:2012
- EN62233:2008

#### EMC Directive (2014/30/EU) Standards used:

- EN 55014-1:2006/A1:2009/A2:2011
- EN 55014-2:2015
- EN61000-3-2:2014
- EN61000-3-3:2013

#### RoHS Directive 2011/65/EU and 2015/863//EU Standards used:

- EN 50581:2012

#### Ecodesign Directive (2009/125/EC)

- Commission Regulation (EC) No 641/2009
- Commission Regulation (EC) No 622/20012

#### Standards used:

- EN 16297-1:2012
- EN 16297-2:2012
- EN 16297-3:2012

$EEL \leq 0.23$  (see individual data sheet or nameplate). The benchmark for the most efficient circulators is  $EEL \leq 0,20$ .

Bjerringbro, 25st of January 2019

  
 Preben Jakobsen  
 Technical Director – HVAC OEM

Grundfos Holding A/S Poul Due Jensens Vej 7 DK-8850 Bjerringbro, Denmark

A person authorised to compile the technical file and empowered to sign the EC declaration of conformity.

	I <sub>1+2</sub> (A)	P <sub>1</sub> (W)	MP a
Min.	X.XX	XXX	
Max.	X.XX	XXX	X.X

**CE** GFNUX  
 $EEL \leq 0.XX$  - Part X  $P_{Lavg} < XXW$   
 $XXXV \sim XX / XXHz$  IPXXX TFXXX  
 Min. 0°C  
 P / N : XXXXXXXX PC: YYWWXXX  
 S / N : XXXXXXXX Grundfos Operations A/S  
 Made In XXXXXXXX DK-8850 Bjerringbro Denmark

GRUNDFOS HOLDING A/S

- Poul Due Jensens Vej 7 DK-8850 Bjerringbro
- **Tel:** +45 87 50 14 00
- [www.grundfos.com](http://www.grundfos.com).

Trademarks displayed in this material, including but not limited to Grundfos, the Grundfos logo and “be think innovate” are registered trademarks owned by The Grundfos Group. All rights reserved.

© 2019 Grundfos Holding A/S, all rights reserved.

---

## Documents / Resources



[GRUNDFOS UPM3 Grundfos Circulating Pump](#) [pdf] Instruction Manual  
UPM3 Grundfos Circulating Pump, UPM3, Grundfos Circulating Pump, Circulating Pump

## References

- [✉ Grundfos | Water is and has always been at the heart and soul of Grundfos. Our promise to the world is to respect, protect, and advance the flow of water.](#)
- [User Manual](#)

[Manuals+](#), [Privacy Policy](#)

This website is an independent publication and is neither affiliated with nor endorsed by any of the trademark owners. The "Bluetooth®" word mark and logos are registered trademarks owned by Bluetooth SIG, Inc. The "Wi-Fi®" word mark and logos are registered trademarks owned by the Wi-Fi Alliance. Any use of these marks on this website does not imply any affiliation with or endorsement.