



GRUNDFOS UPM3 Auto Head Underfloor Instructions

[Home](#) » [GRUNDFOS](#) » GRUNDFOS UPM3 Auto Head Underfloor Instructions 

Contents

- [1 GRUNDFOS UPM3 Auto Head Underfloor](#)
- [2 Product Information](#)
- [3 Product Usage Instructions](#)
- [4 Frequently Asked Questions \(FAQ\)](#)
- [5 SAFETY INSTRUCTION](#)
- [6 INSTALLATION INSTRUCTION](#)
- [7 ELECTRICAL CONNECTION](#)
- [8 USE](#)
- [9 TROUBLESHOOTING](#)
- [10 EU declaration of conformity](#)
- [11 ABOUT COMPANY](#)
- [12 Documents / Resources](#)
 - [12.1 References](#)
- [13 Related Posts](#)



GRUNDFOS UPM3 Auto Head Underfloor



Product Information

Specifications:

- **Model:** UPM3(K) AUTO
- **Age Recommendation:** 8 years and above
- **Supervision:** Required for children and individuals with reduced capabilities

Product Usage Instructions

Safety Guidelines:

It is important to follow these safety guidelines to ensure safe usage of the product:

- Children under 8 years old should not use the appliance.
- Individuals with limited physical, sensory, or mental capabilities should always be supervised when using the product.
- Cleaning and maintenance tasks should not be performed by children without supervision.

Assembly and Operation:

Follow these steps to assemble and operate the product:

1. Read the user manual carefully before starting assembly.
2. Ensure all parts are included in the package.
3. Assemble the product according to the instructions provided.
4. Once assembled, follow the operational instructions for proper use.

Maintenance and Cleaning:

Proper maintenance and cleaning are essential for product longevity. Follow these guidelines:

- Regularly clean the product as per the maintenance instructions.
- Avoid using harsh chemicals that may damage the appliance.

- Inspect the product for any wear and tear regularly.

Frequently Asked Questions (FAQ)

- **Can children under 8 years old use the product?**

No, this appliance is recommended for children aged 8 years and above.

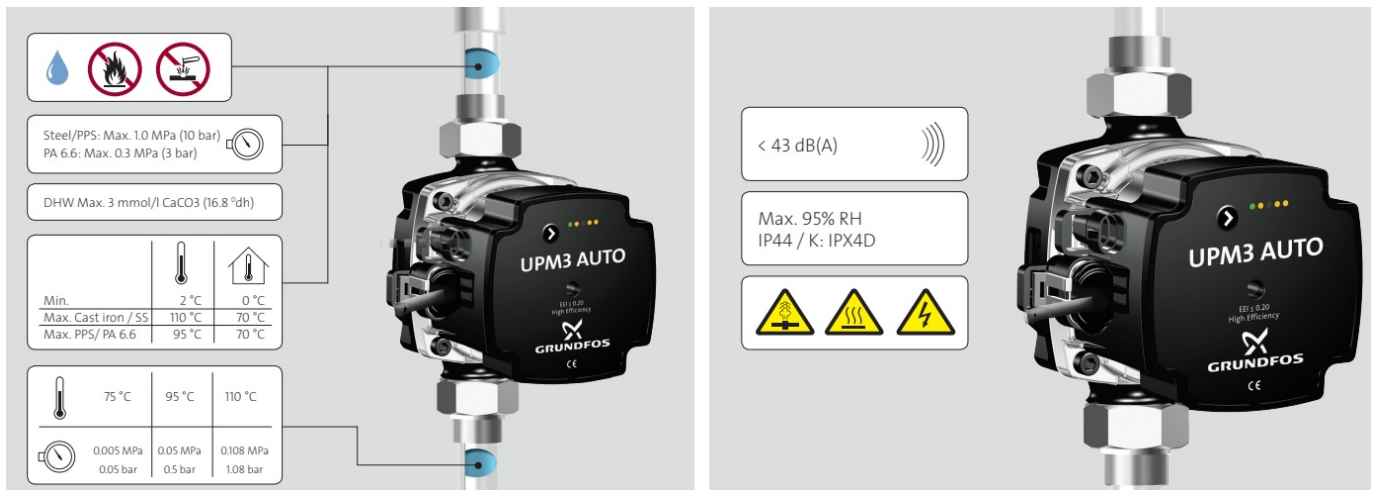
- **Can individuals with limited capabilities use the product?**

Yes, individuals with reduced physical, sensory, or mental capabilities can use the product under supervision.

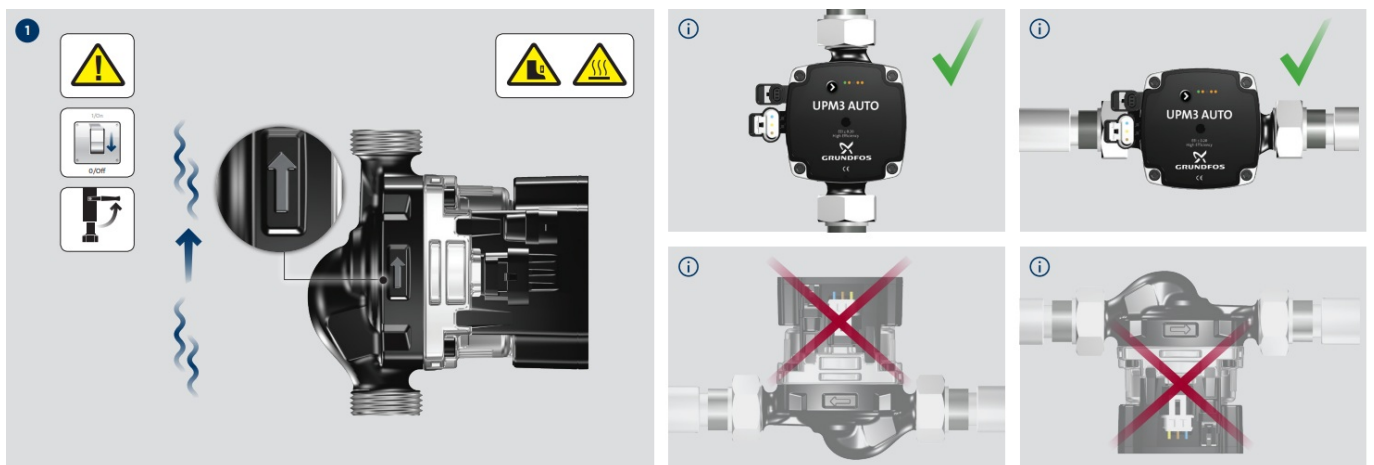
Warning

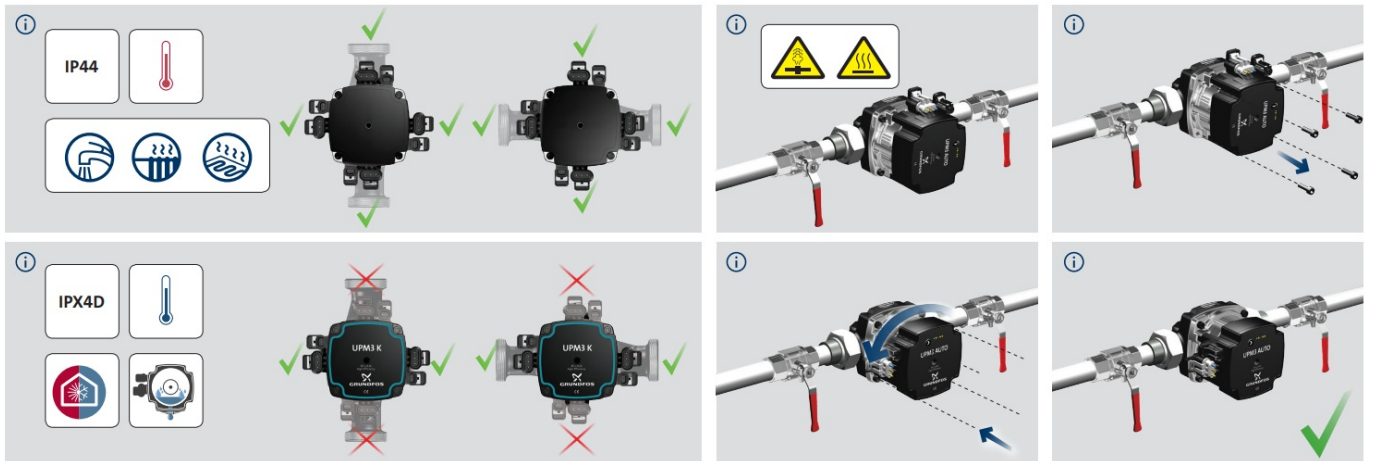
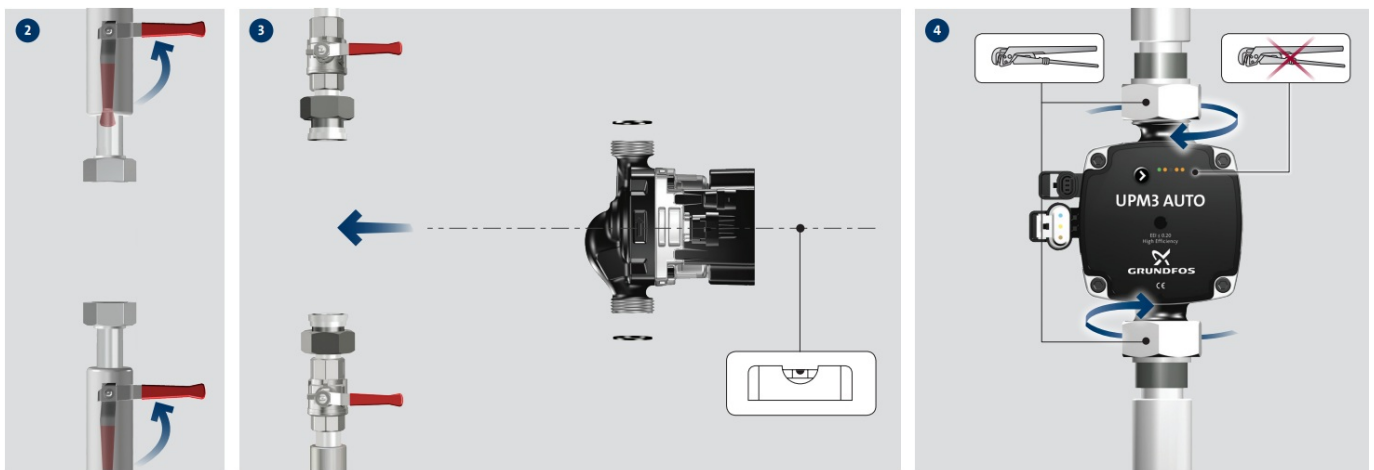
This appliance can be used by children aged from 8 years and above and persons with reduced physical, sensory or mental capabilities or lack of experience and knowledge if they have been given supervision or instruction concerning use of the appliance in a safe way and understand the hazards involved. Children shall not play with the appliance. Cleaning and user maintenance shall not be made by children without supervision.

SAFETY INSTRUCTION

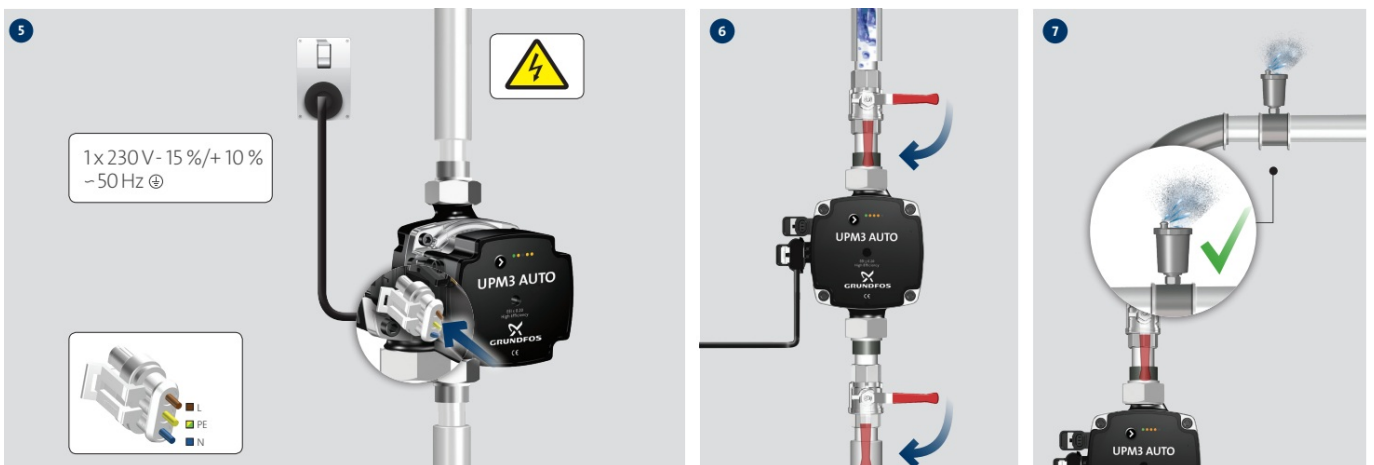


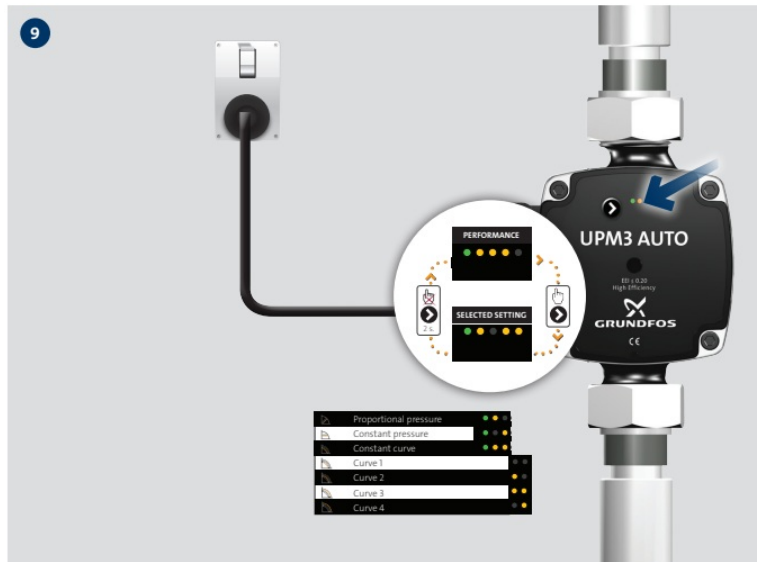
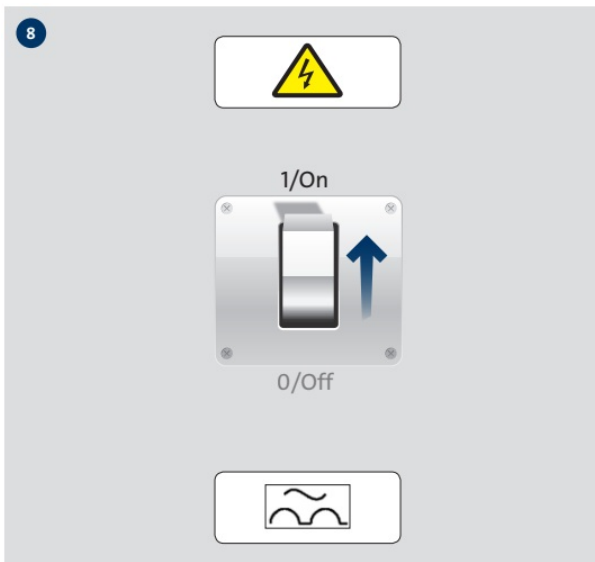
INSTALLATION INSTRUCTION



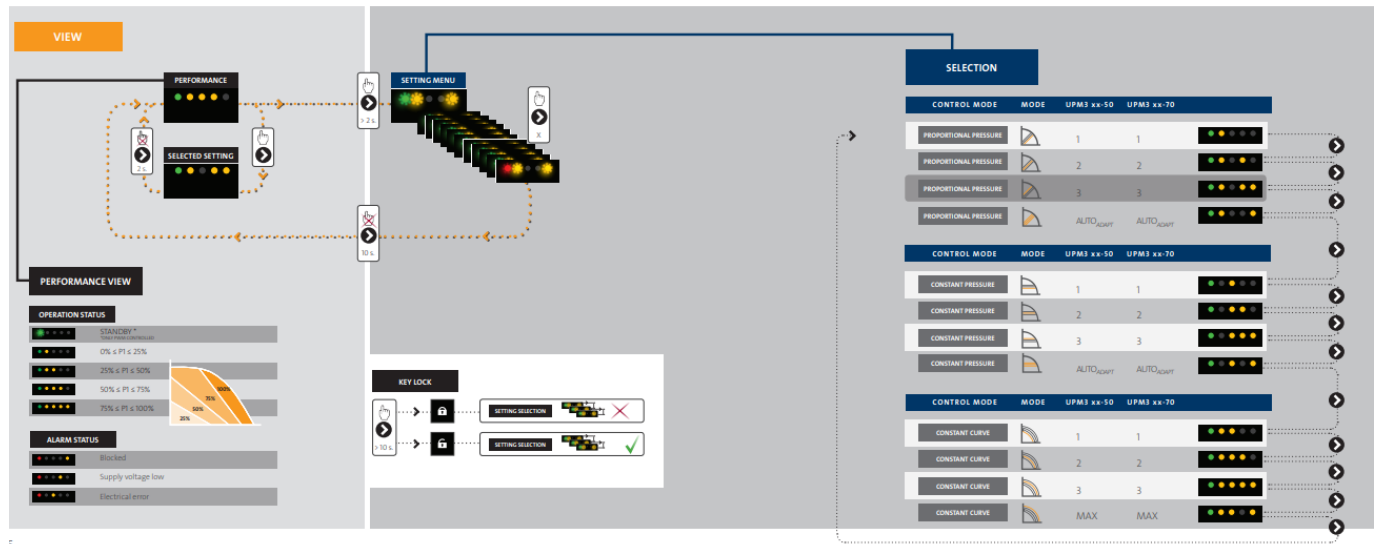


ELECTRICAL CONNECTION

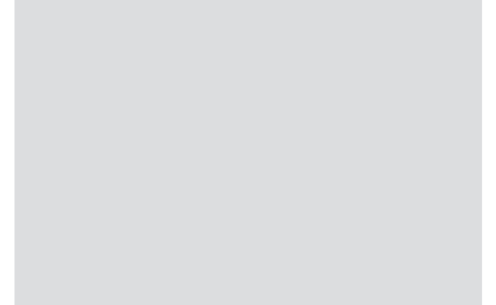
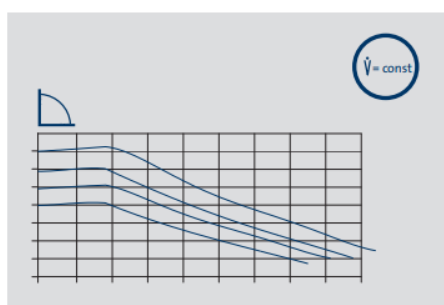
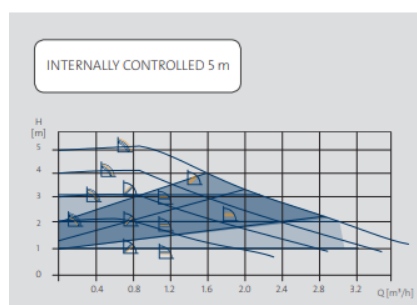
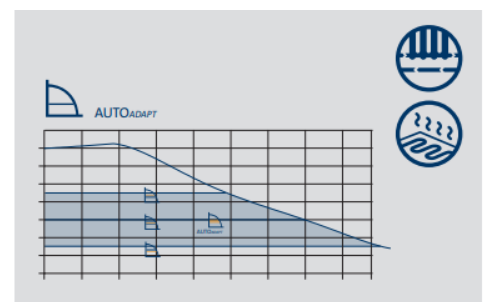
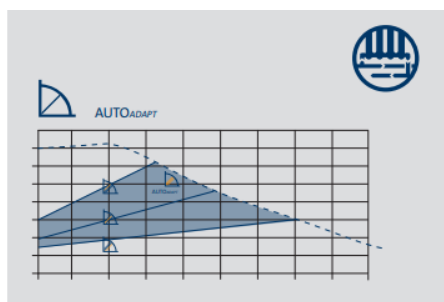
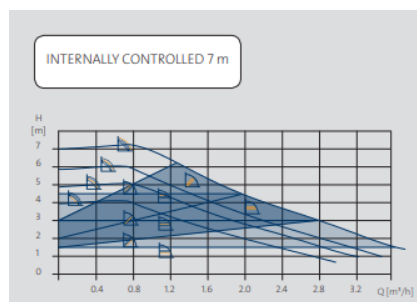


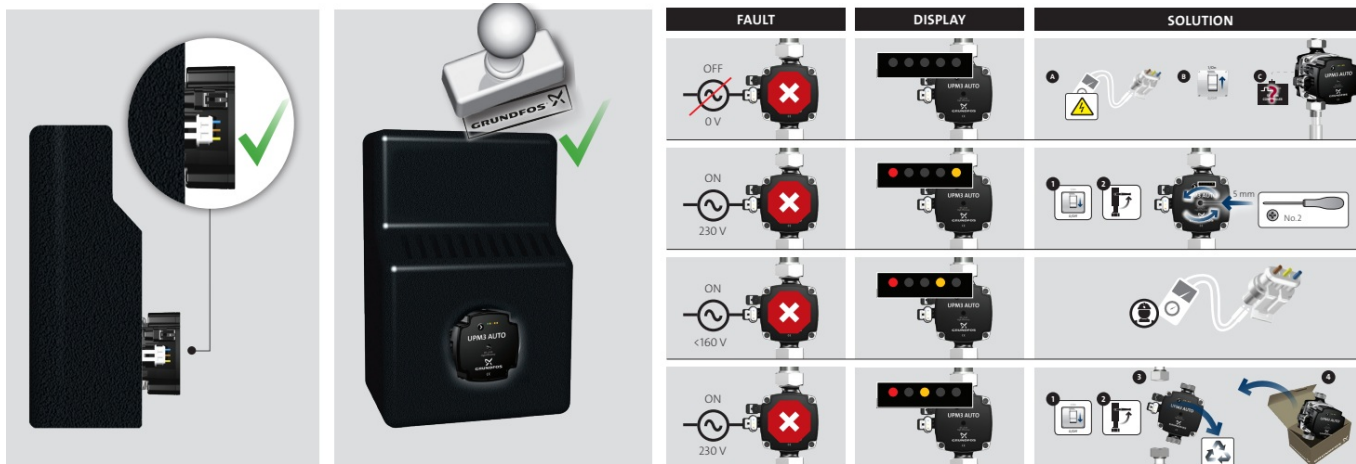


USE



TROUBLESHOOTING





EU declaration of conformity

We, Grundfos, declare under our sole responsibility that the products GFNJB, GFNJD (UPM3 variants with user interface) and GFNJC, GFNJF (Other UPM3 variants), to which the declaration below relates, are in conformity with the Council Directives listed below on the approximation of the laws of the EU member states.

Low Voltage Directive (2014/35/EU)

Standards used:

- EN 60335-1:2012/AC:2014/A11:2014
- EN 60335-2-51:2003/A1:2008/A2:2012
- EN 62233:2008

EMC Directive (2014/30/EU)

Standards used:

- EN 55014-1:2006/A1:2009/A2:2011
- EN 55014-2:2015
- EN 61000-3-2:2014
- EN 61000-3-3:2013

RoHS Directive 2011/65/EU and 2015/863//EU

Standards used:

- EN 50581 :2012

Ecodesign Directive (2009/125/EC)

Commission Regulation (EC) No 641/2009

Commission Regulation (EC) No 622/2012

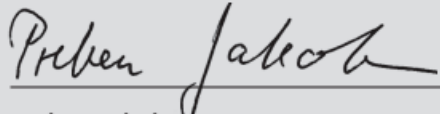
Standards used:

- EN 16297-1:2012
- EN 16297-2:2012
- EN 16297-3:2012

EEL ≤ 0.23 (see individual data sheet or name plate).

The benchmark for the most efficient circulators is EEL ≤ 0.20 .

Bjerringbro, 25st of January 2019



Preben Jakobsen
Technical Director – HVAC OEM

Grundfos Holding A/S
Poul Due Jensens Vej 7
DK-8850 Bjerringbro, Denmark

*Person authorised to compile technical file and
empowered to sign the EC declaration
of conformity.*

	I _{1/1} (A)	P ₁ (W)	MPa
Min.	X.XX	XXX	
Max.	X.XX	XXX	X.X
CE GFNUX			
EEI ≤ 0.XX - Part X P _L avg. < XXW			
XXXV ~ XX / XXHz IPXXX TFXXX			
Min. 0°C			
P / N : XXXXXXXX PC: YYWWXXX			
S / N : XXXXXXXX Grundfos Operations A/S			
DK-8850 Bjerringbro			
Made in XXXXXXXX Denmark			

ABOUT COMPANY

- GRUNDFOS HOLDING A/S Poul Due Jensens Vej 7 DK-8850 Bjerringbro
- **Tel:** +45 87 50 14 00
- www.grundfos.com

Documents / Resources



[GRUNDFOS UPM3 Auto Head Underfloor](#) [pdf] Instructions

UPM3 Auto Head Underfloor, UPM3, Auto Head Underfloor, Head Underfloor, Underfloor

References

- [User Manual](#)

[Manuals+](#), [Privacy Policy](#)

This website is an independent publication and is neither affiliated with nor endorsed by any of the trademark owners. The "Bluetooth®" word mark and logos are registered trademarks owned by Bluetooth SIG, Inc. The "Wi-Fi®" word mark and logos are registered trademarks owned by the Wi-Fi Alliance. Any use of these marks on this website does not imply any affiliation with or endorsement.