



GRUNDFOS Multi Purpose IO Module for SQ Flex Installation Guide

[Home](#) » [GRUNDFOS](#) » GRUNDFOS Multi Purpose IO Module for SQ Flex Installation Guide 

Contents

- [1 GRUNDFOS Multi Purpose IO Module for SQ Flex](#)
- [2 Product Information](#)
- [3 Product Usage Instructions](#)
- [4 WIRING](#)
- [5 USING INSTRUCTION](#)
- [6 Documents / Resources](#)



GRUNDFOS Multi Purpose IO Module for SQ Flex



Product Information

The Multi-purpose IO module is designed for use with the SQ Flex system. It provides various input and output functionalities to enhance the system's capabilities. The module includes 10 terminals labeled from 1 to 10. The terminals can be set to either ON or OFF states, providing flexibility in configuring the module's functionality.

The module features the following input/output options:

- **External stop:** This terminal can be connected to an external device to stop the operation of the SQ Flex system.
- **Level switch:** This terminal can be connected to a level switch to monitor liquid levels. It has a normally open (NO) and normally closed (NC) contact.
- **Digital input 2 (Dig2):** This terminal can be used as a digital input for various purposes.
- **Digital input 3 (Dig3):** This terminal can also be used as a digital input for different applications.

The module has additional terminals for power supply, labeled as L (Line) and N (Neutral), and a terminal for ground connection labeled as +/-.

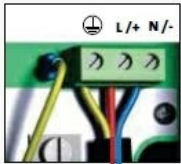
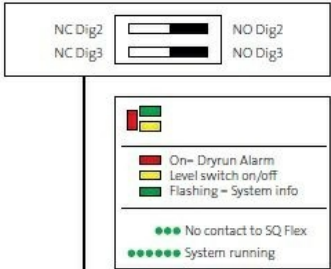
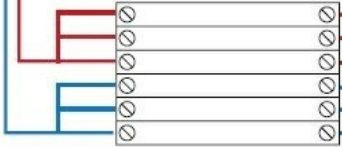
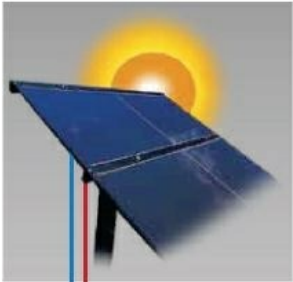
Product Usage Instructions

To use the Multi-purpose IO module for SQ Flex, follow these steps:

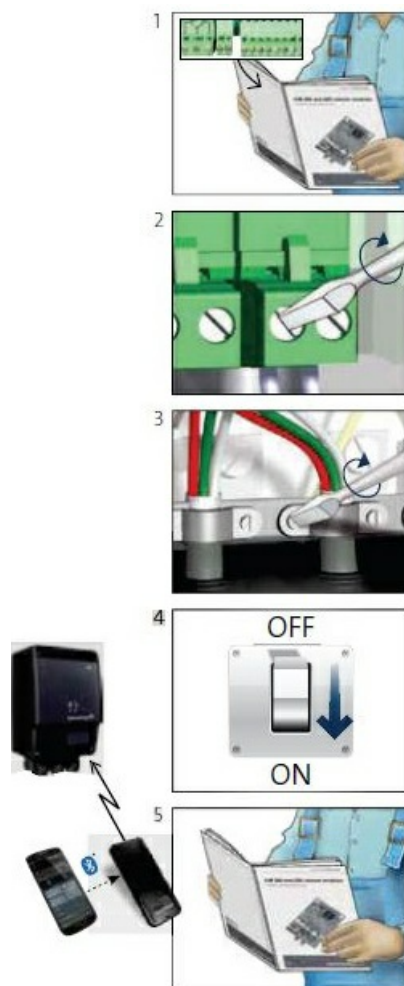
1. Ensure that the SQ Flex system is turned off before connecting the module.
2. Identify the desired functionality for each terminal and set the corresponding switch to either ON or OFF position.
3. If using an external stop device, connect it to the External stop terminal (labeled as NO or NC).
4. If using a level switch, connect it to the Level switch terminal, choosing either the normally open (NO) or normally closed (NC) contact based on your requirements.
5. If utilizing the Dig2 and Dig3 terminals as digital inputs, connect the respective devices or signals to these terminals.
6. Ensure proper power supply by connecting the L (Line) and N (Neutral) terminals to the appropriate power source.
7. Make sure to connect the ground terminal labeled as +/- to the grounding system.
8. Once all connections are made, turn on the SQ Flex system and verify that the module is functioning as desired.

Refer to the user manual for more detailed instructions on configuring specific functionalities and troubleshooting common issues.

WIRING

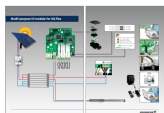


USING INSTURCTION



Multi-purpose IO module for SQ Flex

Documents / Resources

	<p>GRUNDFOS Multi Purpose IO Module for SQ Flex [pdf] Installation Guide</p> <p>Multi Purpose IO Module for SQ Flex, Multi, Purpose IO Module for SQ Flex, Module for SQ Flex, SQ Flex</p>
---	--